

CALIFORNIA REGIONAL WATER QUALITY CONTROL BOARD
CENTRAL VALLEY REGION

ORDER R5-2014-0019

WASTE DISCHARGE REQUIREMENTS
FOR
AERA ENERGY LLC
NORTH BELTRIDGE SOLID WASTE DISPOSAL SITE
POST-CLOSURE MAINTENANCE
KERN COUNTY

The California Regional Water Quality Control Board, Central Valley Region, (hereafter Central Valley Water Board) finds that:

1. AERA Energy LLC (hereinafter Discharger) owns and maintains the North Belridge Solid Waste Disposal Site (facility) about ten miles southwest of Lost Hills, in Section 2, T28S, R20E, MDB&M, as shown in Attachment A, which is incorporated herein and made part of this Order by reference. The facility is an industrial solid waste landfill regulated under authority given in the Water Code, section 13000 et seq., and California Code of Regulations, title 27, section 20005 et seq. (hereinafter Title 27).
2. The 31.7-acre facility contains one closed unlined 28-acre waste management unit (Unit) as shown in Attachment B, which is incorporated herein and made part of this Order by reference. The facility is comprised of Assessor's Parcel Number (APN) 085-110-10-01-9. The Unit started accepting waste in the 1960's and stopped accepting waste in October 2004.
3. On 15 April 2008, the Discharger submitted a revised final closure and post-closure maintenance plan (Final Closure Plan). In accordance with Section 20950(A)(1) of Title 27, a final closure plan constitutes an amendment to the Report of Waste Discharge. The information in the Final Closure Plan has been used in revising these waste discharge requirements (WDRs). The Final Closure Plan contains the applicable information required in Title 27.
4. On 11 December 1998, the Central Valley Water Board issued Order 98-227 in which the Unit was classified as a Class III unit for the discharge of nonhazardous industrial solid waste. This Order continues to classify the landfill unit as a Class III unit in accordance with Title 27.
5. This Order implements the applicable regulations for discharges of solid waste to land through Prohibitions, Specifications, Provisions, and monitoring and reporting requirements. Prohibitions, Specifications, and Provisions are listed in Sections A through F of these WDRs below, and in the Standard Provisions and Reporting Requirements (SPRRs) dated January 2012, which are attached hereto and made part of this Order by reference. Monitoring and reporting requirements are included in the SPRRs and in

Monitoring and Reporting Program (MRP) R5-2014-0019 which is attached hereto and made part of this Order by reference. In general, requirements that are either in regulation or otherwise apply to all MSW landfills are considered to be "standard" and are therefore in the SPRRs. Any site-specific changes to a requirement in the SPRRs are included in the applicable section (A through F) of these WDRs.

6. Title 27 contains regulatory standards for discharges of solid waste promulgated by the State Water Board and the California Department of Resources Recovery and Recycling (CalRecycle). In certain instances, this Order cites CalRecycle regulatory sections. Title 27, section 20012 allows the Central Valley Water Board to cite CalRecycle regulations from Title 27 where necessary to protect water quality provided it does not duplicate or conflict with actions taken by the Local Enforcement Agency in charge of implementing CalRecycle's regulations.

SITE DESCRIPTION

7. The waste management facility is located on the southern edge of the North Belridge Oilfield in the southwestern portion of the San Joaquin Valley.
8. The closest Holocene fault is the San Andreas Fault located approximately 15 miles west of the facility. Recorded magnitudes of seismic events along this fault range between 4.0 and 8.25 on the Richter scale. The peak horizontal ground acceleration at the facility is estimated to be 0.25g.
9. Land uses within one mile of the facility include petroleum extraction and open land.
10. There are no domestic, industrial, or agricultural groundwater supply wells within one mile of the site. No surface springs or other sources of groundwater supply have been observed.
11. The geology of the southern San Joaquin Valley is characterized by structural deformation associated with the tectonics of the continental margin, including movement along the San Andreas Fault. The facility is located on the North Belridge Anticline and is underlain by Pleistocene age unconsolidated non-marine sediments of the Upper Tulare Formation.
12. The hydraulic conductivity of the native soils underlying the Unit, as measured in laboratory tests, ranges between 1.29×10^{-6} and 7.92×10^{-7} centimeters per second.
13. The facility receives an average of 5.4 inches of precipitation per year and the mean pan evaporation is 59.5 inches per year as measured at the California Department of Water Resources Lost Hills Station.
14. The 100-year, 24-hour precipitation event for the facility is estimated to be 2.4 inches, based on the *Kern County Hydrology Manual* dated 1992.

15. The waste management facility is not within a 100-year flood plain based on the Federal Emergency Management Agency's (FEMA) Flood Insurance Rate Map, Community-Panel Number 060075-0675-B.
16. A storm water retention basin is located in the northeast portion of the facility as shown on Attachment B.

WASTE AND UNIT CLASSIFICATION

17. The Discharger previously disposed of nonhazardous solid wastes, consisting of scrap wood, scrap building materials, office refuse, lawn trimmings and asbestos.
18. Less than one percent of the waste discharged to the Unit consists of friable asbestos from insulation removal and maintenance of vehicles and oilfield equipment. Friable asbestos was discharged to a 0.3-acre designated area within the Unit. A variance from managing the friable asbestos as a hazardous waste was approved by the California Department of Toxic Substance Control (DTSC) for a period of one year, effective 1 May 1987. The variance was extended indefinitely on 9 May 1988.
19. The site characteristics where the Unit is located (see Finding No. 12) meet the siting criteria for a new Class III landfill contained in §20260(a) and (b)(1) of Title 27, including the soil characteristics, annual precipitation, distance to groundwater, background water quality, and anticipated use of groundwater. As such, the site is suitable for the discharge and containment of wastes as described in Finding Nos. 17 and 18, without the construction of additional waste containment features in accordance with §20260(b)(2) of Title 27 and State Water Resources Control Board Resolution No. 93-62.

SURFACE WATER AND GROUNDWATER CONDITIONS

20. The *Water Quality Control Plan for the Tulare Lake Basin, Second Edition* (hereafter Basin Plan), designates beneficial uses, establishes water quality objectives, and contains implementation plans and policies for all waters of the Basin.
21. Surface water drainage from the site is to the east in the Antelope Plain Hydrologic Area (558.60) of the Tulare Lake Basin. Surface waters in the Antelope Plain Hydrologic Area are designated as Valley Floor Waters in the Basin Plan.
22. The designated beneficial uses of Valley Floor Waters, as specified in the Basin Plan, are agricultural supply, industrial service and process supply, water contact and non-contact water recreation, warm fresh water habitat, preservation of rare, threatened and endangered species, and groundwater recharge.
23. The facility is in the Kern County Basin Hydrologic Unit, Detailed Analysis Unit (DAU) 259. The designated beneficial uses of the groundwater, as specified in the Basin Plan for DAU

259, are municipal and domestic water supply, agricultural supply, and industrial service supply.

24. The first fluid encountered beneath the facility is oil and tar at approximately 250 feet below ground surface.
25. Analysis of groundwater samples from the nearest wells (over one mile to the east) show total dissolved solids (TDS) concentrations of about 3,300 milligrams per liter (mg/l), electrical conductivity of about 4,000 micromhos per centimeter, chloride concentrations of about 750 mg/l, sulfate concentrations of about 1,000 mg/l and boron concentrations over 1 mg/l. According to the California Division of Oil, Gas, and Geothermal Resources, groundwater that occurs in the Tulare Formation in the North Belridge area has concentrations of TDS over 20,000 mg/l.

GROUNDWATER AND UNSATURATED ZONE MONITORING

26. Title 27 ordinarily requires Dischargers to institute a detection monitoring program for each waste management unit. However, the Central Valley Water Board finds that it is reasonable to waive compliance with Title 27 detection monitoring requirements at the Unit because the first fluid encountered beneath the Unit consists of oil and tar, there is no groundwater in the first 250 feet of sediments beneath the Unit, and groundwater in the vicinity of the facility has high EC, high concentrations of TDS, and high concentrations of naturally occurring inorganic constituents.
27. Four gas monitoring probes were installed along the perimeter of the facility in 1986.

LANDFILL CLOSURE

28. Title 27, section 21090 provides the minimum prescriptive final cover components for landfills consisting of, in descending order, the following layers:
- a. One-foot soil erosion resistant/vegetative layer.
 - b. Geomembrane layer (this layer is required for composite-lined landfills for equivalency to bottom liner).
 - c. One-foot soil low-flow hydraulic conductivity layer, less than 1×10^{-6} cm/s or equal to the hydraulic conductivity of any bottom liner system.
 - d. Two-foot soil foundation layer.
29. Title 27 allows engineered alternative final covers provided the alternative design will provide a correspondingly low flow-through rate throughout the post-closure maintenance period.
30. On 8 May 2008, the *Final Closure and Post-Closure Maintenance Plan*, dated 8 April 2008, was approved for the Unit. The plan proposed an evapotranspirative engineered alternative final cover design system that consisted of a three-foot thick vegetated soil layer.

31. The Discharger demonstrated that an evapotranspirative cover utilizing soil from a nearby borrow source would be an appropriate engineered alternative to the prescriptive design.
32. During 2010, the Discharger constructed the final cover in accordance with the *Final Closure and Post-Closure Maintenance Plan* and the WDRs.

LANDFILL POST-CLOSURE MAINTENANCE

33. The *Final Closure and Post-Closure Maintenance Plan* includes inspection, maintenance, and monitoring of the landfill during the post-closure maintenance period, and includes a post-closure maintenance cost estimate for the entire facility. Inspection and maintenance will include the condition of the final cover, drainage features, and site security. The plan will be implemented for a minimum period of 30 years or until the waste no longer poses a threat to environmental quality, whichever is greater.
34. Once every five years during the post-closure maintenance period, iso-settlement maps will be prepared to determine the amount of differential settlement occurring over the previous five years, pursuant to Title 27, section 21090(e)(2).
35. The completed final cover will be monitored for performance and for damage or defects by visual inspection and a pan lysimeter installed beneath the cover pursuant to section 21090(a)(4)(A) of Title 27. Defects will be repaired and tested for adequacy based on the closure Construction Quality Assurance Plan.

FINANCIAL ASSURANCES

36. Title 27, sections 21840 and 22211 requires a cost estimate for landfill post-closure maintenance. The amount of the cost estimate for post-closure maintenance in 2012 dollars is \$223,097. This Order requires that the Discharger maintain financial assurance with CalRecycle in at least the amount of the post-closure maintenance cost estimate adjusted annually for inflation.

CEQA AND OTHER CONSIDERATIONS

37. The action to revise waste discharge requirements for this existing facility is exempt from the provisions of the California Environmental Quality Act (CEQA), Public Resource Code section 21000, et seq., and the CEQA guidelines, in accordance with California Code of Regulations, title 14, section 15301.
38. This order implements:
 - a. *The Water Quality Control Plan for the Tulare Lake Basin, Second Edition*; and
 - b. The prescriptive standards and performance goals of California Code of Regulations, Title 27, section 20005 et seq., effective 18 July 1997, and subsequent revisions.

39. Based on the threat and complexity of the discharge, the facility is determined to be classified 3B as defined below:
- a. Category 3 threat to water quality, defined as, "Those discharges of waste that could degrade water quality without violating water quality objectives, or could cause a minor impairment of designated beneficial uses as compared with Category 1 and Category 2."
 - b. Category B complexity, defined as, "Any discharger not included in Category A that has physical, chemical, or biological treatment systems (except for septic systems with subsurface disposal), or any Class 2 or Class 3 waste management units."
40. Water Code section 13267(b) provides that: "In conducting an investigation specified in subdivision (a), the Regional Board may require that any person who has discharged, discharges, or is suspected of having discharged or discharging, or who proposed to discharge within its region, or any citizen or domiciliary, or political agency or entity of this state who had discharged, discharges, or is suspected of having discharged or discharging, or who proposed to discharge waste outside of its region that could affect the quality of the waters of the state within its region shall furnish, under penalty of perjury, technical or monitoring program reports which the board requires. The burden, including costs of these reports, shall bear a reasonable relationship to the need for the reports and the benefits to be obtained from the reports."
41. The technical reports required by this Order and the attached Monitoring and Reporting Program No. R5-2014-0019 are necessary to assure compliance with these waste discharge requirements. The Discharger owns and maintains the facility that discharged the waste subject to this Order.

PROCEDURAL REQUIREMENTS

42. All local agencies with jurisdiction to regulate land use, solid waste disposal, air pollution, and to protect public health have approved the use of this site for the discharges of waste to land stated herein.
43. The Central Valley Water Board notified the Discharger and interested agencies and persons of its intent to prescribe waste discharge requirements for this discharge, and has provided them with an opportunity for a public hearing and an opportunity to submit their written views and recommendations.
44. The Central Valley Water Board, in a public meeting, heard and considered all comments pertaining to the discharge.

IT IS HEREBY ORDERED, pursuant to California Water Code sections 13263 and 13267, that Order 98-227 is rescinded except for purposes of enforcement, and that AERA Energy LLC, its agents, successors, and assigns, in order to meet the provisions of Division 7 of the California Water Code and the regulations adopted thereunder, shall comply with the following:

A. PROHIBITIONS

1. The discharge of any additional waste at this facility is prohibited.
2. The Discharger shall comply with all applicable Standard Prohibitions listed in Section C of the SPRRs dated January 2012.

B. DISCHARGE SPECIFICATIONS

1. The Discharger shall comply with all applicable Standard Discharge Specifications listed in Section D of the SPRRs dated January 2012.

C. FACILITY SPECIFICATIONS

1. The Discharger shall comply with all applicable Standard Facility Specifications listed in Section E of the SPRRs dated January 2012.

D. FINANCIAL ASSURANCE SPECIFICATIONS

1. The Discharger shall obtain and maintain assurances of financial responsibility with CalRecycle for post-closure maintenance for the landfill in at least the amounts described in Finding No. 36, adjusted for inflation annually. A report regarding financial assurances for post-closure maintenance shall be submitted to the Central Valley Water Board by **1 June of each year**. This may be the same report that is submitted to CalRecycle for this purpose. If CalRecycle determines that either the amount of coverage or the mechanism is inadequate, then within 90 days of notification, the Discharger shall submit an acceptable mechanism to CalRecycle and the Central Valley Water Board for at least the amount of the approved cost estimate.
2. The Discharger shall obtain and maintain assurances of financial responsibility with CalRecycle for initiating and completing non-water release corrective action in accordance with Section 22100 of Title 27. A report regarding financial assurances for corrective action shall be submitted to the Central Valley Water Board by 1 June of each year. This may be the same report that is submitted to CalRecycle for this purpose. If CalRecycle determines that either the amount of coverage or the mechanism is inadequate, then within 90 days of notification, the Discharger shall submit an acceptable mechanism to CalRecycle and the Central Valley Water Board for at least the amount of the approved cost estimate.

3. The Discharger shall comply with all applicable Standard Financial Assurance Specifications listed in Section H of the SPRRs dated January 2012.

E. MONITORING SPECIFICATIONS

1. The Discharger shall comply with all applicable Standard Monitoring Specifications and Response to a Release specifications listed in Sections I and J of the SPRRs dated January 2012.
2. The Discharger shall comply with MRP R5-2014-0019.

F. PROVISIONS

1. The Discharger shall maintain a copy of this Order at the offices of AERA Energy LLC, including the MRP R5-2014-0019 and the SPRRs dated January 2012, and make it available at all times to facility maintenance personnel, who shall be familiar with its contents, and to regulatory agency personnel.
2. The Discharger shall comply with all applicable provisions of Title 27 that are not specifically referred to in this Order.
3. The Discharger shall comply with the applicable portions of the Standard Provisions and Reporting Requirements for Waste Discharge Requirements for Nonhazardous Solid Waste Discharges Regulated by Subtitle D and/or Title 27, dated January 2012.
4. If there is any conflicting or contradictory language between the WDRs, the MRP, or the SPRRs, then language in the WDRs shall supersede either the MRP or the SPRRs, and language in the MRP shall supersede the SPRRs.
5. All reports required by this Order shall be submitted pursuant to Water Code section 13267.
6. The Discharger shall complete the tasks contained in these waste discharge requirements in accordance with the following time schedule:

Task

Compliance Date

A. Financial Assurance Review

- | | |
|---|-------------------------|
| 1. Annual Review of Financial Assurance for closure and post-closure maintenance (see Financial Assurance Specification D.1). | 1 June each year |
| 2. Annual Review of Financial Assurance for | 1 June each year |

Non-water release corrective action
(see Financial Assurance Specification D.2).

7. The Discharger shall comply with all General Provisions listed in Section K of the SPRRs dated January 2012.

If, in the opinion of the Executive Officer, the Discharger fails to comply with the provisions of this Order, the Executive Officer may refer this matter to the Attorney General for judicial enforcement, may issue a complaint for administrative civil liability, or may take other enforcement actions. Failure to comply with this Order may result in the assessment of Administrative Civil Liability of up to \$10,000 per violation, per day, depending on the violation, pursuant to the Water Code, including sections 13268, 13350 and 13385. The Central Valley Water Board reserves its right to take any enforcement actions authorized by law.

Any person aggrieved by this action of the Central Valley Water Board may petition the State Water Board to review the action in accordance with Water Code section 13320 and California Code of Regulations, title 23, sections 2050 and following. The State Water Board must receive the petition by 5:00 p.m., 30 days after the date of this Order, except that if the thirtieth day following the date of this Order falls on a Saturday, Sunday, or state holiday, the petition must be received by the State Water Board by 5:00 p.m. on the next business day. Copies of the law and regulations applicable to filing petitions may be found on the Internet at:

http://www.waterboards.ca.gov/public_notices/petitions/water_quality

or will be provided upon request.

I, PAMELA C. CREEDON, Executive Officer, do hereby certify that the foregoing is a full, true, and correct copy of an Order adopted by the California Regional Water Quality Control Board, Central Valley Region, on 7 February 2014.

Original signed by:

PAMELA C. CREEDON, Executive Officer

CALIFORNIA REGIONAL WATER QUALITY CONTROL BOARD
CENTRAL VALLEY REGION

MONITORING AND REPORTING PROGRAM NO. R5-2014-0019
FOR
AERA ENERGY LLC
NORTH BELRIDGE SOLID WASTE DISPOSAL SITE
POST-CLOSURE MAINTENANCE
KERN COUNTY

This monitoring and reporting program (MRP) is issued pursuant to California Water Code section 13267 and incorporates requirements for facility monitoring, maintenance, and reporting; and financial assurances reporting contained in California Code of Regulations, title 27, section 20005, et seq. (hereafter Title 27), Waste Discharge Requirements (WDRs) Order No. R5-2014-0019, and the Standard Provisions and Reporting Requirements (SPRRs) dated January 2012. Compliance with this MRP is ordered by the WDRs and the Discharger shall not implement any changes to this MRP unless a revised MRP is issued by the Central Valley Water Board or the Executive Officer.

A. MONITORING

The monitoring program of this MRP includes:

<u>Section</u>	<u>Monitoring Program</u>
A.1	Facility Monitoring
A.2	Leachate Seep Monitoring

1. Facility Monitoring

a. Annual Facility Inspection

Annually, prior to the anticipated rainy season, but no later than **30 September**, the Discharger shall conduct an inspection of the facility. The inspection shall assess repair and maintenance needed for drainage control systems, cover systems, and groundwater monitoring wells; and shall assess preparedness for winter conditions (including but not limited to erosion and sedimentation control). The Discharger shall take photos of any problems areas before and after repairs. Any necessary construction, maintenance, or repairs shall be completed by **31 October**. Annual facility inspection reporting shall be included in the Annual Monitoring Summary Report as required in Section B.3 of this MRP.

b. **Major Storm Events**

The Discharger shall inspect all precipitation, diversion, and drainage facilities and all landfill side slopes for damage **within 7 days** following major storm events (i.e., a storm that causes continuous runoff for at least one hour). The Discharger shall take photos of any problem areas before and after repairs. Necessary repairs shall be completed **within 30 days** of the inspection. Notification and reporting requirements for major storm events shall be conducted as required in Section B.4 of this MRP.

c. **Final Cover Monitoring**

The Discharger shall monitor the final cover in accordance with the provisions in the Final Closure Plan and the Post-Closure Maintenance Plan. The pan lysimeter shall be checked for the presence of water semi-annually. The volume of water discovered in the lysimeter shall be reported in the Annual Monitoring Summary Report. In the event that the volume of water detected in the pan lysimeter exceeds that which would be equal to a ten millimeter depth over the area of the lysimeter, then, within 120 days, the Discharger shall submit a plan and time schedule, for Executive Officer review and approval, to evaluate the problem, and recommend and implement corrective measures.

d. **Five-Year Iso-Settlement Survey for Closed Units**

For closed landfill units, the Discharger shall conduct a five-year iso-settlement survey and produce an iso-settlement map accurately depicting the estimated total change in elevation of the evapotranspirative final cover. For each portion of the landfill, this map shall show the total lowering of the surface elevation of the final cover, relative to the baseline topographic map [Title 27, section 21090(e)(1 & 2)]. Reporting shall be in accordance with Section B.5 of this MRP. The next iso-settlement survey shall be conducted in 2016.

e. **Standard Observations**

The Discharger shall conduct Standard Observations at the landfill quarterly in accordance with this section of the MRP.

The Standard Observations shall include:

- 1) For the landfill units:
 - a) Evidence of ponded water at any point on the landfill; and
 - b) Evidence of erosion and/or of day-lighted refuse.

- 2) Along the perimeter of the landfill units:
 - a) Evidence of leachate seeps, estimated size of affected area, and flow rate (show affected area on map); and
 - b) Evidence of erosion and/or of day-lighted refuse.

Results of Standard Observations shall be submitted in the Annual Monitoring Summary Report required in Section B.1 of this MRP.

2. Leachate Seep Monitoring

Seep Monitoring: Leachate that seeps to the surface from a landfill unit shall be sampled and analyzed for the Field and Monitoring Parameters listed in Table I upon detection. The quantity of leachate shall be estimated and reported as Leachate Flow Rate (in gallons/day). Reporting for leachate seeps shall be conducted as required in Section B.2 of this MRP, below.

B. REPORTING

The Discharger shall submit the following reports in accordance with the required schedule:

Reporting Schedule

<u>Section</u>	<u>Report</u>	<u>End of Reporting Period</u>	<u>Due Date</u>
B.1	Annual Monitoring Summary Report	31 December	1 February
B.2	Seep Reporting	Continuous	Immediately & 7 Days
B.3	Annual Facility Inspection Report	31 October	1 February
B.4	Major Storm Event Reporting	Continuous	7 days from damage discovery
B.5	Survey and Iso-Settlement Map for Closed Landfills	Every Five Years	1 February in the year after the survey is conducted
B.6	Financial Assurances Report	31 December	1 June

Reporting Requirements

The Discharger shall submit monitoring data and information as required in this MRP and as required in WDRs Order No. R5-2014-0019 and the SPRRs. In reporting the monitoring data required by this program, the Discharger shall arrange the data in

tabular form so that the date, the constituents, the concentrations, and the units are readily discernible. The data shall be summarized in such a manner so as to illustrate clearly the compliance with waste discharge requirements or the lack thereof. Data shall also be submitted in a digital format, such as a computer disk.

Monitoring reports shall be submitted to the Central Valley Water Board in accordance with the above schedule for the calendar period in which samples were taken or observations made. In addition, the Discharger shall enter all monitoring data and monitoring reports into the online Geotracker database as required by Division 3 of Title 27.

The results of **all monitoring** conducted at the site shall be reported to the Central Valley Water Board in accordance with the reporting schedule above for the calendar period in which samples were taken or observations made.

The Discharger shall retain records of all monitoring information, including all calibration and maintenance records, all original strip chart recordings of continuous monitoring instrumentation, copies of all reports required by this Order, and records of all data used to complete the application for this Order. Records shall be maintained throughout the life of the facility including the post-closure period. Such records shall be legible and shall show the following for each sample:

- a) Sample identification and the monitoring point or background monitoring point from which it was taken, along with the identity of the individual who obtained the sample;
- b) Date, time, and manner of sampling;
- c) Date and time that analyses were started and completed, and the name of the personnel and laboratory performing each analysis;
- d) Complete procedure used, including method of preserving the sample, and the identity and volumes of reagents used;
- e) Calculation of results; and
- f) Results of analyses, and the MDL and PQL for each analysis. All peaks shall be reported.

Required Reports

1. **Annual Monitoring Summary Report:** The Discharger shall submit an Annual Monitoring Report to the Central Valley Water Board by **1 February** covering the reporting period of the previous monitoring year. Each Annual Monitoring Report shall contain the following information:
 - a) A summary of all Standard Observations for the reporting period required in Section A.1.e of this MRP.

- b) A summary of inspection, leak search, and repair of final covers on any closed landfill units in accordance with an approved final post-closure maintenance plan as required by Standard Closure and Post-Closure Maintenance Specifications G.26 through G.29 of the SPRRs.
 - c) All historical monitoring data for which there are detectable results, including data for the previous year, shall be submitted in tabular form in a digital file format such as a computer disk. The Central Valley Water Board regards the submittal of data in hard copy and in digital format as "...the form necessary for..." statistical analysis [Title 27, section 20420(h)], that facilitates periodic review by the Central Valley Water Board.
 - d) A comprehensive discussion of the compliance record, and the result of any corrective actions taken or planned which may be needed to bring the Discharger into full compliance with the waste discharge requirements.
 - e) A written summary of the monitoring results, indicating any changes made or observed since the previous Annual Monitoring Summary Report.
2. **Seep Reporting:** The Discharger shall report by telephone any seepage from the disposal area **immediately** after it is discovered. A written report shall be filed with the Central Valley Water Board **within seven days**, containing at least the following information:
- a) A map showing the location(s) of seepage;
 - b) An estimate of the flow rate;
 - c) A description of the nature of the discharge (e.g., all pertinent observations and analyses);
 - d) Verification that samples have been submitted for analyses of the Field Parameters and Monitoring Parameters listed in Table I of this MRP, and an estimated date that the results will be submitted to the Central Valley Water Board; and
 - e) Corrective measures underway or proposed, and corresponding time schedule.
3. **Annual Facility Inspection Reporting:** By **1 February** of each year, the Discharger shall submit a report, included in the Annual Monitoring Summary Report, describing the results of the inspection and the repair measures implemented, preparations for winter, and include photographs of any problem areas and the repairs. Refer to Section A.1.a of this MRP, above.
4. **Major Storm Event Reporting:** Following major storm events capable of causing damage or significant erosion, the Discharger **immediately** shall notify Central Valley Water Board staff of any damage or significant erosion upon discovery and report subsequent repairs within **14 days** of completion of the repairs, including

photographs of the problem and the repairs. Refer to Section A.1.b of this MRP, above.

5. **Survey and Iso-Settlement Map for Closed Landfills:** The Discharger shall conduct a survey and submit an iso-settlement map for each closed area of the landfill every five years pursuant to Title 27, section 21090(e). Refer to Section A.1.d of this MRP, above. The survey report and the map shall be submitted with the subsequent Annual Monitoring Summary Report. The next report is due by 1 February 2017.
6. **Financial Assurances Report:** By **1 June** of each year, the Discharger shall submit a copy of the annual financial assurances report due to CalRecycle that updates the financial assurances for post-closure maintenance. Refer to Financial Assurances Specifications D.1 and D.2 of the WDRs.

C. TRANSMITTAL LETTER FOR ALL REPORTS

A transmittal letter explaining the essential points shall accompany each report. At a minimum, the transmittal letter shall identify any violations found since the last report was submitted, and if the violations were corrected. If no violations have occurred since the last submittal, this shall be stated in the transmittal letter. The transmittal letter shall also state that a discussion of any violations found since the last report was submitted, and a description of the actions taken or planned for correcting those violations, including any references to previously submitted time schedules, is contained in the accompanying report. The transmittal letter shall contain a statement by the discharger, or the discharger's authorized agent, under penalty of perjury, that to the best of the signer's knowledge the report is true, accurate, and complete.

The Discharger shall implement the above monitoring program on the effective date of this Program.

Original signed by:

Ordered by: _____
PAMELA C. CREEDON, Executive Officer

7 February 2014

(Date)

TABLE I

LEACHATE SEEP MONITORING

<u>Parameter</u>	<u>Units</u>	<u>Sampling Frequency</u>	<u>Reporting Frequency</u>
Field Parameters			
Total Flow	Gallons	Monthly	Semiannual
Flow Rate	Gallons/Day	Monthly	Semiannual
Electrical Conductivity	umhos/cm	Quarterly	Semiannual
pH	pH units	Quarterly	Semiannual
Monitoring Parameters			
Total Dissolved Solids (TDS)	mg/L	Annually	Annually
Chloride	mg/L	Annually	Annually
Carbonate	mg/L	Annually	Annually
Bicarbonate	mg/L	Annually	Annually
Nitrate - Nitrogen	mg/L	Annually	Annually
Sulfate	mg/L	Annually	Annually
Calcium	mg/L	Annually	Annually
Magnesium	mg/L	Annually	Annually
Potassium	mg/L	Annually	Annually
Sodium	mg/L	Annually	Annually
Volatile Organic Compounds	ug/L	Annually	Annually
(USEPA Method 8260B, short list, see Table II)			

TABLE II

MONITORING PARAMETERS FOR LEACHATE SEEP MONITORING

Surrogates for Metallic Constituents:

pH
Total Dissolved Solids
Electrical Conductivity
Chloride
Sulfate
Nitrate nitrogen

Volatile Organic Compounds, short list:

USEPA Method 8260B

Acetone
Acrylonitrile
Benzene
Bromochloromethane
Bromodichloromethane
Bromoform (Tribromomethane)
Carbon disulfide
Carbon tetrachloride
Chlorobenzene
Chloroethane (Ethyl chloride)
Chloroform (Trichloromethane)
Dibromochloromethane (Chlorodibromomethane)
1,2-Dibromo-3-chloropropane (DBCP)
1,2-Dibromoethane (Ethylene dibromide; EDB)
o-Dichlorobenzene (1,2-Dichlorobenzene)
m-Dichlorobenzene (1,3-Dichlorobenzene)
p-Dichlorobenzene (1,4-Dichlorobenzene)
trans-1,4-Dichloro-2-butene
Dichlorodifluoromethane (CFC-12)
1,1-Dichloroethane (Ethylidene chloride)
1,2-Dichloroethane (Ethylene dichloride)
1,1 -Dichloroethylene (1,1 -Dichloroethene; Vinylidene chloride)
cis- 1,2-Dichloroethylene (cis- 1,2-Dichloroethene)
trans-1,2-Dichloroethylene (trans-1,2-Dichloroethene)
1,2-Dichloropropane (Propylene dichloride)
cis- 1,3-Dichloropropene
trans- 1,3-Dichloropropene
Di-isopropylether (DIPE)
Ethanol
Ethyltertiary butyl ether
Ethylbenzene
2-Hexanone (Methyl butyl ketone)
Hexachlorobutadiene
Methyl bromide (Bromomethene)
Methyl chloride (Chloromethane)

TABLE II

MONITORING PARAMETERS FOR LEACHATE SEEP MONITORING

Continued

Methylene bromide (Dibromomethane)
Methylene chloride (Dichloromethane)
Methyl ethyl ketone (MEK: 2-Butanone)
Methyl iodide (Iodomethane)
Methyl t-butyl ether
4-Methyl-2-pentanone (Methyl isobutylketone)
Naphthalene
Styrene
Tertiary amyl methyl ether
Tertiary butyl alcohol
1,1,1,2-Tetrachloroethane
1,1,2,2-Tetrachloroethane
Tetrachloroethylene (Tetrachloroethene; Perchloroethylene)
Toluene
1,2,4-Trichlorobenzene
1,1,1-Trichloroethane (Methylchloroform)
1,1,2-Trichloroethane
Trichloroethylene (Trichloroethene)
Trichlorofluoromethane (CFC- 11)
1,2,3-Trichloropropane
Vinyl acetate
Vinyl chloride
Xylenes

INFORMATION SHEET

WASTE DISCHARGE REQUIREMENTS ORDER R5-2014-0019
FOR AERA ENERGY LLC
FOR POST-CLOSURE MAINTENANCE
NORTH BELBRIDGE SOLID WASTE DISPOSAL SITE
KERN COUNTY

AERA Energy LLC (hereinafter Discharger) owns and maintains the North Belridge Solid Waste Disposal Site (facility) about ten miles southwest of Lost Hills, in Section 2, T28S, R20E, MDB&M. The 31.7-acre facility contains one closed unlined 28-acre waste management unit.

The California Regional Water Quality Control Board (Central Valley Water Board) adopted Waste Discharge Requirements (WDRs) Order 98-227 on 11 December 1998, which classified the waste management unit (Unit) as a Class III unit for the discharge of nonhazardous industrial solid waste as defined in California Code of Regulations, title 27, section 20005 et seq. (hereafter Title 27). The proposed Order revises the existing WDRs to regulate post-closure maintenance.

The waste management facility is located on the southern edge of the North Belridge Oilfield in the southwestern portion of the San Joaquin Valley. The geology of the southern San Joaquin Valley is characterized by structural deformation associated with the tectonics of the continental margin, including movement along the San Andreas Fault. The facility is located on the North Belridge Anticline and is underlain by Pleistocene age unconsolidated non-marine sediments of the Upper Tulare Formation.

The first fluid encountered beneath the facility is oil and tar at approximately 250 feet below ground surface.

Analysis of groundwater samples from the nearest wells (over one mile to the east) show total dissolved solids (TDS) concentrations of about 3,300 milligrams per liter (mg/l), electrical conductivity (EC) of about 4,000 micromhos per centimeter, Chloride concentrations of about 750 mg/l, sulfate concentrations of about 1,000 mg/l and boron concentrations over 1 mg/l. According to the California Division of Oil, Gas, and Geothermal Resources, groundwater that occurs in the Tulare Formation in the North Belridge area has concentrations of TDS over 20,000 mg/l.

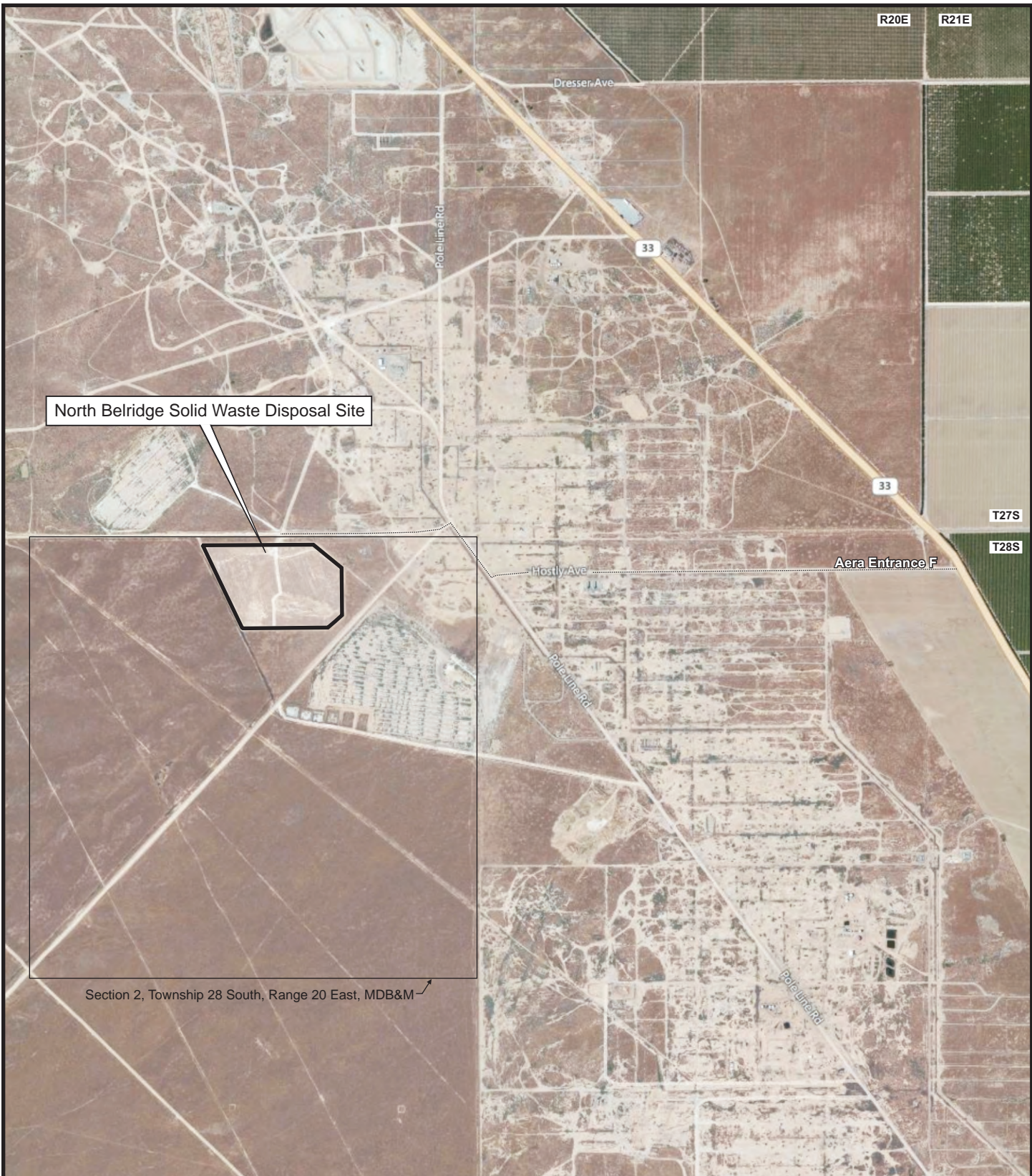
Title 27 ordinarily requires Dischargers to institute a detection monitoring program for each waste management unit. However, the Central Valley Water Board finds that it is reasonable to waive compliance with Title 27 detection monitoring requirements at the Unit because the first fluid encountered beneath the Unit consists of oil and tar, there is no groundwater in the first 250 feet of sediments beneath the Unit, and groundwater in the vicinity of the facility has

high EC, high concentrations of TDS, and high concentrations of naturally occurring inorganic constituents.

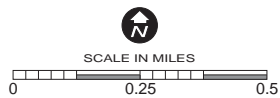
The Discharger adequately demonstrated that construction of a Title 27 prescriptive standard cover would be unreasonable and unnecessarily burdensome when compared to the proposed engineered alternative design. There is no clay source on-site or nearby and the cost of importing clay from off-site or mixing on-site soils with bentonite would cost substantially more than the alternative design. The Discharger demonstrated that an evapotranspirative cover utilizing soil from a nearby borrow source would be an appropriate engineered alternative to the prescriptive design. During 2010, the Discharger constructed the final cover in accordance with the Final Closure Plan and the WDRs.

The action to revise waste discharge requirements for this existing facility is exempt from the provisions of the California Environmental Quality Act (CEQA), Public Resource Code section 21000, et seq., and the CEQA guidelines, in accordance with California Code of Regulations, title 14, section 15301.

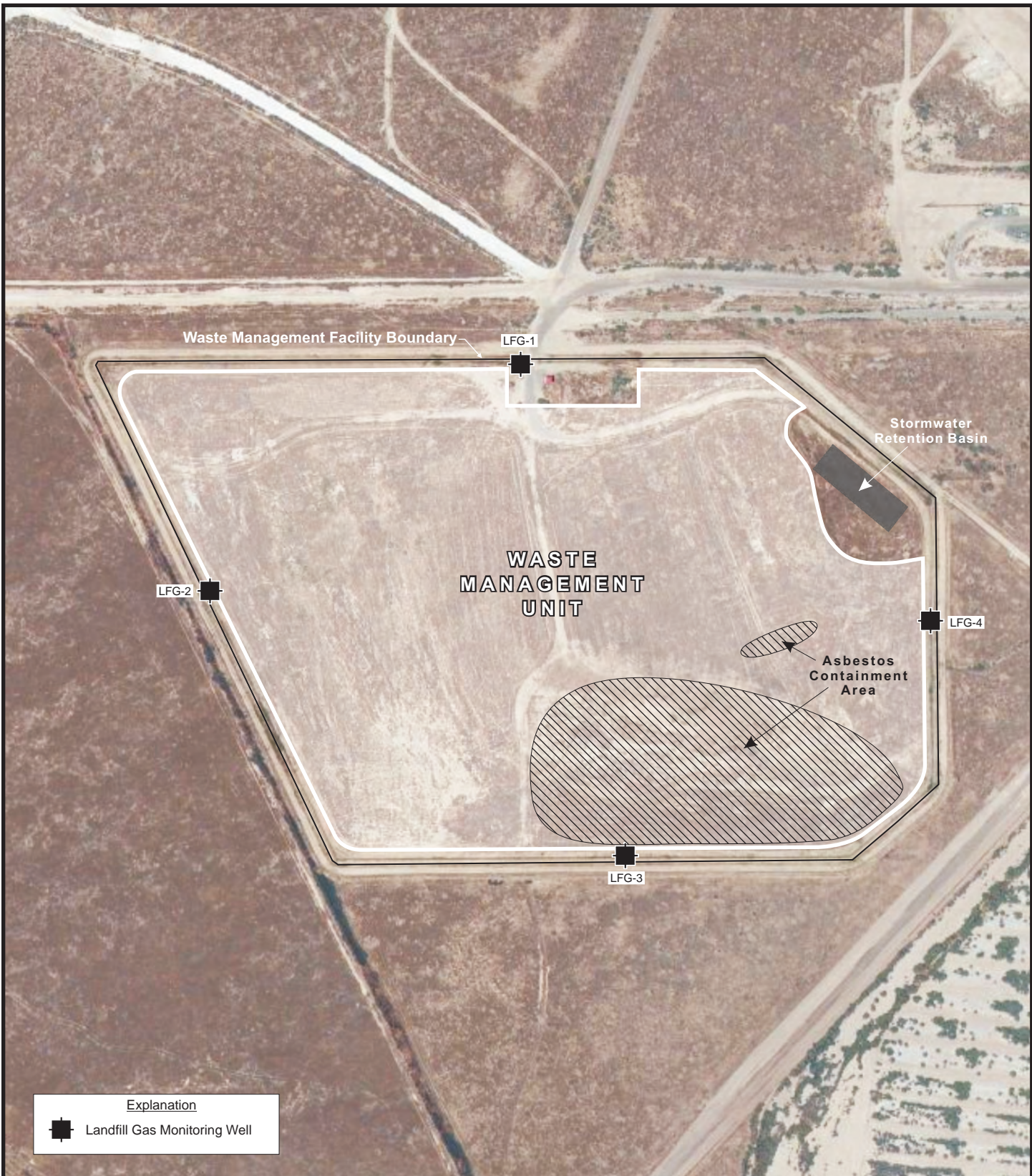
This order requires full containment of wastes and does not permit degradation of surface water or groundwater. Further antidegradation analysis is therefore not needed. The discharge is consistent with the antidegradation provisions of State Water Resource Control Board Resolution No. 68-16.



Map Source:
 ESRI's ArcGIS Online Premium Services
 Sections 2, T28S, R20E, MDB&M

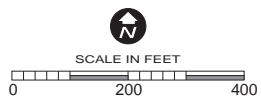


LOCATION MAP
 ORDER R5-2014-0019
 WASTE DISCHARGE REQUIREMENTS
 FOR
 AERA ENERGY LLC
 NORTH BELBRIDGE SOLID WASTE DISPOSAL SITE
 POST-CLOSURE MAINTENANCE
 KERN COUNTY



Explanation	
	Landfill Gas Monitoring Well

Map Source:
 ESRI's ArcGIS Online Premium Services
 Section 2, T28S, R20E, MDB&M



SITE MAP
 ORDER R5-2014-0019
 WASTE DISCHARGE REQUIREMENTS
 FOR
 AERA ENERGY LLC
 NORTH BELRIDGE SOLID WASTE DISPOSAL SITE
 POST-CLOSURE MAINTENANCE
 KERN COUNTY

CALIFORNIA REGIONAL WATER QUALITY CONTROL BOARD
CENTRAL VALLEY REGION

STANDARD PROVISIONS AND REPORTING REQUIREMENTS
FOR
WASTE DISCHARGE REQUIREMENTS
FOR
NONHAZARDOUS SOLID WASTE DISCHARGES
REGULATED BY SUBTITLE D AND/OR TITLE 27
(40 C.F.R. section 258 and Title 27, § 20005 et seq.)

JANUARY 2012

TABLE OF CONTENTS

Section	Page
A. APPLICABILITY	2
B. TERMS AND CONDITIONS	2
C. STANDARD PROHIBITIONS	4
D. STANDARD DISCHARGE SPECIFICATIONS	5
E. STANDARD FACILITY SPECIFICATIONS	6
F. STANDARD CONSTRUCTION SPECIFICATIONS	8
G. STANDARD CLOSURE AND POST-CLOSURE SPECIFICATIONS	11
H. STANDARD FINANCIAL ASSURANCE PROVISIONS	15
I. STANDARD MONITORING SPECIFICATIONS	15
J. RESPONSE TO A RELEASE	25
K. GENERAL PROVISIONS	27
L. STORM WATER PROVISIONS	29

A. APPLICABILITY

1. These Standard Provisions and Reporting Requirements (SPRRs) are applicable to nonhazardous solid waste disposal sites that are regulated by the Central Valley Regional Water Quality Control Board (hereafter, Central Valley Water Board) pursuant to the provisions of California Code of Regulations, title 27 ("Title 27"), section 20005 et seq., and municipal solid waste (MSW) landfills that are subject to the Federal Subtitle D regulations contained in 40 Code of Federal Regulations section 258 (hereafter, "Subtitle D" or "40 C.F.R. § 258.XX") in accordance with State Water Resources Control Board (State Water Board) Resolution 93-62. The Subtitle D regulations are only applicable to MSW landfills and therefore any requirements in these SPRRs that are referenced as coming from Subtitle D are not applicable to non-MSW waste management units such as Class II surface impoundments, Class II waste piles, and non-MSW landfill units. All Subtitle D requirements in these SPRRs are referenced with "[40 C.F.R. § 258.XX]" after the requirement.
2. "Order," as used throughout this document, means the Waste Discharge Requirements (WDRs) to which these SPRRs are incorporated.
3. The requirements prescribed herein do not authorize the commission of any act causing injury to the property of another, and do not protect the Discharger from liabilities under federal, state, or local laws. This Order does not convey any property rights or exclusive privileges.
4. The provisions of this Order are severable. If any provision of this Order is held invalid, the remainder of this Order shall not be affected.
5. If there is any conflicting or contradictory language between the WDRs, the Monitoring and Reporting Program (MRP), or the SPRRs, then language in the WDRs shall govern over either the MRP or the SPRRs, and language in the MRP shall govern over the SPRRs.
6. If there is a site-specific need to change a requirement in these SPRRs for a particular landfill facility, the altered requirement shall be placed in the appropriate section of the WDRs and will supersede the corresponding SPRRs requirement. These SPRRs are standard and cannot be changed as part of the permit writing process or in response to comments, but they will be periodically updated on an as-needed basis.
7. Unless otherwise stated, all terms are as defined in Water Code section 13050 and in Title 27, section 20164.

B. TERMS AND CONDITIONS

1. Failure to comply with any waste discharge requirement, monitoring and reporting requirement, or Standard Provisions and Reporting Requirement, or

other order or prohibition issued, reissued, or amended by the Central Valley Water Board or the State Water Board, or intentionally or negligently discharging waste, or causing or permitting waste to be deposited where it is discharged into the waters of the state and creates a condition of pollution or nuisance, is a violation of this Order and the Water Code, which can result in the imposition of civil monetary liability [Wat. Code, § 13350(a)]

2. After notice and opportunity for a hearing, this Order may be terminated or modified for cause, including, but not limited to [Wat. Code, § 13381]:
 - a. Violation of any term or condition contained in this Order;
 - b. Obtaining this Order by misrepresentation, or failure to disclose fully all relevant facts;
 - c. A change in any condition that results in either a temporary or permanent need to reduce or eliminate the authorized discharge; or
 - d. A material change in the character, location, or volume of discharge.
3. Before initiating a new discharge or making a material change in the character, location, or volume of an existing discharge, the Discharger shall file a new report of waste discharge (ROWD), or other appropriate joint technical document (JTD), with the Central Valley Water Board [Wat. Code, § 13260(c) and § 13264(a)]. A material change includes, but is not limited to, the following:
 - a. An increase in area or depth to be used for solid waste disposal beyond that specified in waste discharge requirements;
 - b. A significant change in disposal method, location, or volume (e.g., change from land disposal to land treatment);
 - c. A change in the type of waste being accepted for disposal; or
 - d. A change to previously-approved liner systems or final cover systems that would eliminate components or reduce the engineering properties of components.
4. Representatives of the Central Valley Water Board may inspect the facilities to ascertain compliance with the waste discharge requirements. The inspection shall be made with the consent of the owner or possessor of the facilities or, if the consent is refused, with a duly issued warrant. However, in the event of an emergency affecting the public health or safety, an inspection may be made without consent or the issuance of a warrant [Wat. Code, §13267(c)].

5. The Central Valley Water Board will review this Order periodically and will revise these waste discharge requirements when necessary [Wat. Code, § 13263(e) and Title 27, § 21720(b)].
6. Except for material determined to be confidential in accordance with California law and regulations, all reports prepared in accordance with terms of this Order shall be available for public inspection at the offices of the Central Valley Water Board [Wat. Code, § 13267(b)]. Data on waste discharges, water quality, geology, and hydrogeology shall not be considered confidential.
7. A discharge of waste into the waters of the state is a privilege, not a right. No discharge of waste into waters of the state, whether or not the discharge is made pursuant to waste discharge requirements, shall create a vested right to continue the discharge [Wat. Code, § 13263(g)].
8. Technical and monitoring reports specified in this Order are requested pursuant to the Water Code [§13267(b)]. Failure to furnish the reports by the specified deadlines or falsifying information in the reports, are misdemeanors that may be liable civilly in accordance with §13268(b) of the Water Code [Wat. Code, §13268(a)].

C. STANDARD PROHIBITIONS

1. The discharge of liquid or semi-solid waste (waste containing less than 50 percent solids) is prohibited, except for the following when proposed in the ROWD/JTD and approved by this Order:
 - a. Dewatered sewage or water treatment sludge as described in Title 27, section 20220(c) provided it is discharged above a composite liner with a leachate collection and removal system (LCRS) [Title 27, § 20200(d)(3)].
 - b. Leachate and/or landfill gas condensate that is returned to the composite-lined waste management unit (with an LCRS) from which it came [Title 27, § 20340(g) and 40 C.F.R. § 258.28].
2. The discharge of wastes which have the potential to reduce or impair the integrity of containment structures or which, if commingled with other wastes in the waste management unit, could produce violent reaction, heat or pressure, fire or explosion, toxic by-products, or reaction products, which, in turn:
 - a. require a higher level of containment than provided by the unit; or
 - b. are 'restricted wastes'; or
 - c. impair the integrity of containment structures;is prohibited [Title 27, § 20200(b)].

3. The discharge of wastes outside of a waste management unit or portions of a unit specifically designed for their containment is prohibited.
4. The discharge of solid waste containing free liquid or which may contain liquid in excess of the moisture holding capacity as a result of waste management operations, compaction or settlement is prohibited.
5. The discharge of waste to a closed landfill unit is prohibited.
6. The discharge of waste constituents to the unsaturated zone or to groundwater is prohibited.
7. The discharge of solid or liquid waste or leachate to surface waters, surface water drainage courses, or groundwater is prohibited.

D. STANDARD DISCHARGE SPECIFICATIONS

1. The Discharger is responsible for accurate characterization of wastes, including a determination of whether or not wastes will be compatible with containment features and other wastes at the waste management unit and whether or not the wastes are required to be managed as a hazardous waste [Title 27, § 20200(c)] or designated waste [Title 27, § 20210].
2. Leachate and landfill gas condensate collected from a waste management unit shall be discharged to the unit from which it came, or discharged to an appropriate waste management unit in accordance with Title 27 and in a manner consistent with the waste classification of the liquid [Title 27, § 20200(d) and § 20340(g)].
3. The discharge of leachate or landfill gas condensate is restricted to those portions of a waste management unit that has a composite liner system and LCRS meeting the Federal Subtitle D requirements [40 C.F.R. § 258.28].
4. Leachate and condensate returned to a composite-lined landfill unit (when approved by this Order) shall be discharged and managed such that it does not cause instability of the waste, does not cause leachate seeps, does not generate additional landfill gas that is not extracted from the landfill by an active landfill gas extraction system, does not cause contaminants to enter surface water runoff, and does not cause leachate volumes to exceed the maximum capacity of the LCRS.
5. Any discharge of waste outside the portion of the landfill that was already covered with waste as of the landfill unit's respective Federal Deadline constitutes a "lateral expansion" and requires the installation of an approved composite liner system and LCRS [40 C.F.R. § 258.40(b)].

6. Wastes shall be discharged only into waste management units specifically designed for their containment and/or treatment, as described in this Order.
7. The discharge shall remain within the designated disposal area at all times.
8. The discharge of waste shall not cause a nuisance condition [Wat. Code, § 13050(m)].

E. STANDARD FACILITY SPECIFICATIONS

1. All waste management units shall be designed, constructed, and operated to ensure that wastes, including leachate, will be a minimum of 5 feet above the highest anticipated elevation of underlying groundwater [Title 27, § 20240(c)], including the capillary fringe.
2. Surface and subsurface drainage from outside of a waste management unit shall be diverted from the unit [Title 27, § 20365(e)].
3. Interim cover is daily and intermediate cover [Title 27, § 20750(a)]. Interim cover over wastes discharged to a landfill shall be designed and constructed to minimize percolation of liquids through the wastes [Title 27, § 20705(b)].
4. Intermediate cover consisting of compacted earthen material of at least twelve (12) inches shall be placed on all surfaces of the fill where no additional solid waste will be deposited within **180 days** [Title 27, § 20700(a)].
5. During wet weather conditions, the facility shall be operated and graded to minimize leachate generation.
6. The Discharger shall **immediately** notify the Central Valley Water Board staff of any slope failure occurring at a waste management unit. Any failure which threatens the integrity of containment features or the waste management unit shall be promptly corrected in accordance with an approved method [Title 27, § 21710(c)(2)].
7. The Discharger shall **immediately** notify Central Valley Water Board staff of any flooding, unpermitted discharge of waste off-site or outside of waste management units, equipment failure, or other change in site conditions which could impair the integrity of waste or leachate containment facilities or precipitation and drainage control structures.
8. The Discharger shall limit water used for facility maintenance within landfill areas to the minimum amount necessary for dust control and construction.
9. The Discharger shall maintain in good working order any facility, control system, or monitoring device installed to achieve compliance with the waste discharge requirements.

10. The Discharger shall lock all groundwater monitoring wells with a lock on the well cap or monitoring well box. All monitoring devices shall be clearly labeled with their designation including all monitoring wells, LCRS risers, and lysimeter risers and shall be easily accessible for required monitoring by authorized personnel. Each monitoring device shall be clearly visible and be protected from damage by equipment or vehicles.
11. The Discharger shall ensure that methane and other landfill gases are adequately vented, removed from landfill units, or otherwise controlled to prevent the danger of adverse health effects, nuisance conditions, degradation, or the impairment of the beneficial uses of surface water or groundwater due to migration through the unsaturated zone.
12. The Discharger shall maintain the depth of the fluid in the sump of each landfill unit at the minimum needed for efficient pump operation (the depth at which the pump turns on given the pump intake height and maximum pump cycle frequency).
13. The depth of fluid on the landfill liner shall not exceed **30 centimeters** (cm) [40 C.F.R. § 258.40(a)(2)]. This regulation is interpreted by the Central Valley Water Board to exclude the leachate sump. The Discharger shall **immediately** notify the Central Valley Water Board staff by telephone, and follow up in writing within **seven** days if monitoring reveals that the depth of fluid on any portion of the liner (excluding the sump) exceeds 30 cm (approximately 12 inches). The written notification shall include a timetable for remedial or corrective action necessary to achieve compliance with the leachate depth limitation.
14. Each LCRS shall be tested at least annually to demonstrate proper operation. The results of the tests shall be compared with earlier tests made under comparable conditions [Title 27, § 20340(d)].
15. The Discharger shall maintain a *Storm Water Pollution Prevention Plan and Monitoring Program and Reporting Requirements* in accordance with State Water Board Order No. 97-03-DWQ (or most recent general industrial storm water permit), or retain all storm water on-site.
16. Internal site drainage from surface or subsurface sources shall not contact or percolate through wastes.
17. New MSW landfill units or lateral expansions of existing units shall not be sited in a "wetland" [as defined in 40 C.F.R. § 232.29(r)] unless there is no practical alternative; steps have been taken to assure no net loss of wetland; the landfill unit will not degrade the wetland; the unit will not jeopardize threatened or endangered species or produce adverse modification of a critical habitat or violate any requirement of the Marine Protection, Research, and Sanctuaries Act of 1972 [40 C.F.R. § 258.12].

F. STANDARD CONSTRUCTION SPECIFICATIONS

1. The Discharger shall submit for review and approval at least **90 days** prior to proposed construction, design plans and specifications for new landfill modules that include the following:
 - a. Detailed construction drawings showing all required liner system components, the LCRS, leachate sump, unsaturated zone monitoring system, any proposed landfill gas monitoring and extraction points, and access to the LCRS for required annual testing.
 - b. A Construction Quality Assurance (CQA) Plan prepared by a California-registered civil engineer or certified engineering geologist, and that meets the requirements of Title 27, section 20324.
 - c. A geotechnical evaluation of the area soils, evaluating their use as the base layer or reference to the location of this information in the ROWD/JTD [Title 27, § 21750(f)(4)].
 - d. Information about the seismic design of the proposed new module (or reference to the location of this information in the ROWD/JTD) in accordance with Title 27, section 20370.
 - e. A revised water quality monitoring plan for groundwater detection monitoring (or information showing the existing plan is adequate) in accordance with Title 27, section 20415.
 - f. An Operation Plan (or reference to the location of this information in the ROWD/JTD) meeting the requirements of Title 27, section 21760(b).
2. All containment structures shall be designed by, and construction shall be supervised by, a California registered civil engineer or a certified engineering geologist, and shall be certified by that individual as meeting the prescriptive standards, or approved engineered alternative design, in accordance with this Order prior to waste discharge.
3. The Discharger shall not proceed with construction until the construction plans, specifications, and all applicable construction quality assurance plans have been approved. Waste management units shall receive a final inspection and approval of the construction by Central Valley Water Board staff before use of the unit commences [Title 27, § 20310(e)].
4. Any report, or any amendment or revision of a report, that proposes a design or design change that might affect a waste management unit's containment features or monitoring systems shall be approved by a California registered civil engineer or a certified engineering geologist [Title 27, § 21710(d)].

5. Materials used in containment structures shall have appropriate chemical and physical properties to ensure that such structures do not fail to contain waste because of pressure gradients, physical contact with waste or leachate, chemical reactions with soil or rock, climatic conditions, the stress of installation, or because of the stress of daily operations [Title 27, § 20320(a)].
6. Waste management units and their respective containment structures shall be designed and constructed to limit, to the greatest extent possible, ponding, infiltration, inundation, erosion, slope failure, washout, and overtopping [Title 27, § 20365(a)].
7. The Discharger shall design storm water conveyance systems for Class III units for a 100-year, 24-hour storm event, and shall design storm water conveyance systems for Class II units for a 1,000-year, 24-hour storm event [Title 27, § 21750(e)(3)].
8. All Class III landfill units shall be designed to withstand the maximum probable earthquake and Class II waste management units shall be designed to withstand maximum credible earthquake without damage to the foundation or to the structures that control leachate, or surface drainage, or erosion, or gas [Title 27, § 20370(a)].
9. The Discharger shall perform stability analyses that include components to demonstrate the integrity of the landfill foundation, final slopes, and containment systems under both static and dynamic conditions throughout the landfill's life including the closure period and post-closure maintenance period [Title 27, § 21750(f)(5)].
10. New waste management units and expansions of existing units shall not be located on a known Holocene fault [Title 27, § 20260(d)].
11. Liners shall be designed and constructed to contain the fluid, including landfill gas, waste, and leachate [Title 27, § 20330(a)].
12. Hydraulic conductivities shall be determined primarily by appropriate field test methods in accordance with accepted civil engineering practice. The results of laboratory tests with both water and leachate, and field tests with water, shall be compared to evaluate how the field permeabilities will be affected by leachate. It is acceptable for the Discharger to use appropriate compaction tests in conjunction with laboratory hydraulic conductivity tests to determine field permeabilities as long as a reasonable number of field hydraulic conductivity tests are also conducted [Title 27, § 20320(c)].
13. Hydraulic conductivities specified for containment structures other than the final cover shall be relative to the fluids (leachate) to be contained. Hydraulic conductivities for the final cover shall be relative to water [Title 27, § 20320(b)].

14. A test pad for each barrier layer and final cover shall be constructed in a manner duplicating the field construction. Test pad construction methods, with the designated equipment, shall be used to determine if the specified density/moisture-content/hydraulic conductivity relationships determined in the laboratory can be achieved in the field with the compaction equipment to be used and at the specified lift thickness [Title 27, § 20324(g)(1)(A)].
15. Performance requirements for geosynthetic membranes shall include, but are not limited to, a need to limit infiltration of water, to the greatest extent possible; a need to control landfill gas emissions; mechanical compatibility with stresses caused by equipment traffic, and for final covers the result of differential settlement over time and durability throughout the post-closure maintenance period [Title 27, § 20324(i)(1)].
16. The Discharger shall ensure proper preparation of the subgrade for any liner system that includes a GCL so as to provide a smooth surface that is free from rocks, sticks, or other debris that could damage or otherwise limit the performance of the GCL.
17. The Discharger shall propose an electronic leak location survey of the top liner for any new landfill module in the construction quality assurance plan unless the Discharger demonstrates that a leak location survey is not needed.
18. Leachate collection and removal systems are required for Class II landfills and surface impoundments, MSW landfills, and for Class III landfills which have a liner or which accept sewage or water treatment sludge [Title 27, § 20340(a)].
19. All new landfill units or lateral expansions of existing units that require a LCRS shall have a blanket-type LCRS that covers the bottom of the unit and extends as far up the sides as possible. The LCRS shall be of sufficient strength and thickness to prevent collapse under the pressures exerted by overlying wastes, waste cover materials, and by any equipment used at the unit [Title 27, § 20340(e)].
20. The LCRS shall be designed, constructed, maintained, and operated to collect and remove twice the maximum anticipated daily volume of leachate from the waste management unit [Title 27, § 20340(b)].
21. Leachate collection and removal systems shall be designed and operated to function without clogging through the scheduled closure of the landfill unit and during the post-closure maintenance period.
22. The LCRS shall be designed to maintain the depth of fluid over any portion of the LCRS of no greater than 30 cm [40 C.F.R. § 258.40(a)(2)], excluding the leachate sump. The leachate sump, leachate removal pump, and pump controls shall be designed and set to maintain a fluid depth no greater than the minimum needed for efficient pump operation [Title 27, § 20340(c)].

23. All construction of liner systems and final cover systems shall be performed in accordance with a Construction Quality Assurance Plan certified by a registered civil engineer or a certified engineering geologist [Title 27, § 20323].
24. The Construction Quality Assurance program shall be supervised by a registered civil engineer or a certified engineering geologist who shall be designated the CQA officer [Title 27, § 20324(b)(2)].
25. The Discharger shall ensure that a third party independent of both the Discharger and the construction contractor performs all of the construction quality assurance monitoring and testing during the construction of a liner system.
26. The Discharger shall notify Central Valley Water Board staff at least **14 days** prior to commencing field construction activities including construction of a new lined cell or module, construction of a final cover, or any other construction that requires Central Valley Water Board staff approval under this Order.
27. The Discharger shall submit for review and approval at least **60 days** prior to proposed discharge, final documentation required in Title 27 Section 20324(d)(1)(C) following the completion of construction of a new lined landfill module. The report shall be certified by a registered civil engineer or a certified engineering geologist and include a statement that the liner system was constructed in accordance with the approved design plans and specifications, the CQA Plan, the requirements of the WDRs, and that it meets the performance goals of Title 27. The report shall contain sufficient information and test results to verify that construction was in accordance with the design plans and specifications, the construction quality assurance plan, and the performance goals of Title 27.
28. The Discharger shall not discharge waste onto a newly constructed liner system until the final documentation report has been reviewed and an acceptance letter has been received.
29. Prior to placement of waste in a new landfill unit, the Discharger shall monitor any pan lysimeter for the unit that has received enough rainfall to flood the LCERS sump. If liquid is detected in the pan lysimeter, the Discharger shall verify that the liquid is not from a leak in the primary liner system before waste can be accepted to the new module.

G. STANDARD CLOSURE AND POST-CLOSURE SPECIFICATIONS

1. The Discharger shall submit a final or partial final closure and post-closure maintenance plan at least **two years** prior to the anticipated date of closure [Title 27, § 21780(d)(1)].

2. The Discharger shall notify the Central Valley Water Board in writing that a landfill unit or portion of a unit is to be closed either at the same time that the California Department of Resources Recycling and Recovery (CalRecycle) is notified or **180 days** prior to beginning any final closure activities, whichever is sooner [Title 27, § 21710(c)(5)(A)]. The notice shall include a statement that all closure activities will conform to the most recently approved final or partial final closure plan and that the plan provides for site closure in compliance with all applicable federal and state regulations [Title 27, § 21710(c)(5)(C)].
3. Initiation of closure activities shall begin within **30 days** of final waste receipt, or within **one year** of receipt of most recent waste if additional capacity remains [40 C.F.R. § 258.60(f)].
4. Closure activities shall be completed within **180 days** of the beginning of closure activities unless an extension is granted by the Executive Officer [40 C.F.R. § 258.60(g)].
5. The Discharger shall carry out both mandatory closure and normal closure of a waste management unit or a portion of a unit in accordance with a closure and post-closure maintenance plan approved by the Central Valley Water Board [Title 27, § 20950(a)(1)] through the issuance of closure waste discharge requirements.
6. The Discharger shall notify the Central Valley Water Board that a preliminary closure and post-closure maintenance plan has been prepared and placed in the operating record by the date of initial receipt of waste at any new MSW landfill unit or lateral expansion of any existing unit [40 C.F.R. § 258.60(d)]. This notification shall be included in the cover letter transmitting the preliminary closure and post-closure maintenance plan.
7. In addition to the applicable provisions of Title 27, the preliminary closure and/or the post-closure maintenance plans for MSW landfill units shall include the following:
 - a. A description of the steps necessary to close all MSW landfill units at any point during their active life in accordance with the cover design requirements [40 C.F.R. § 258.60(c)];
 - b. An estimate of the largest area of the landfill unit(s) ever requiring a final cover at any time during the active life of the unit(s) [40 C.F.R. § 258.60(c)(2)];
 - c. An estimate of the maximum inventory of wastes ever on-site over the active life of the waste management facility [40 C.F.R. § 258.60(c)(3)]; and
 - d. A schedule for completing all activities necessary to satisfy the closure criteria in 40 C.F.R. section 258.60 [40 C.F.R. § 258.60(c)(4)].

8. The final closure and post-closure maintenance plan for the waste management unit shall include at least the following: an itemized cost analysis, closure schedule, any proposed final treatment procedures, map, changes to the unit description presented in the most recent ROWD, federal requirements for a MSW facility, land use of the closed unit, and a construction quality assurance plan [Title 27, § 21769(c) & (d)].
9. Closure of each waste management unit shall be under the direct supervision of a registered civil engineer or certified engineering geologist [Title 27, § 20950(b)].
10. The final cover of closed landfills shall be designed, graded, and maintained to prevent ponding and soil erosion due to high run-off velocities [Title 27, § 21090(b)(1)(A)].
11. The final grading design shall be designed and approved by a registered civil engineer or certified engineering geologist [Title 27, § 21090(b)(1)(C)].
12. All final cover designs shall include a minimum 1-foot thick erosion resistant layer [Title 27, § 21090(a)(3)(A)].
13. The Discharger shall close the landfill with minimum 15-foot wide benches every 50 vertical feet [Title 27, § 21090(a)].
14. Final cover slopes shall not be steeper than a horizontal to vertical ratio of one and three quarters to one and designs having any slopes steeper than a horizontal to vertical ratio of three to one, or having a geosynthetic component, shall have these aspects of their design specifically supported in the slope stability report required in Title 27, section 21750(f)(5) [Title 27, § 21090(a)].
15. For any portions of the final cover installed after July 18, 1997, for which the Central Valley Water Board has not approved a slope and foundation stability report on or before that date, the Discharger shall meet the requirements of Title 27, section 21750(f)(5) [Title 27, § 21090(a)(6)].
16. Areas with slopes greater than ten percent, surface drainage courses, and areas subject to erosion by wind or water shall be designed and constructed to prevent such erosion [Title 27, § 21090(b)(2)].
17. The Discharger shall design storm water conveyance systems for closed Class III units for a 100-year, 24-hour storm event, and shall design storm water conveyance systems for closed Class II units for a 1,000-year, 24-hour storm event [Title 27, § 21750(e)(3)].
18. Closed landfill units shall be provided with at least two permanent surveying monuments, installed by a licensed land surveyor or by a registered civil engineer, from which the location and elevation of all wastes, containment

structures, and monitoring facilities can be determined throughout the post-closure maintenance period [Title 27, § 20950(d)].

19. Following closure of any MSW landfill units, the Discharger shall notify the Executive Officer that the deed to the landfill facility property, or some other instrument that is normally examined during a title search, has been recorded and a copy placed in the operating record. The notation on the deed shall in perpetuity notify any potential purchaser of the property that the land has been used as a landfill facility and that use of the land is restricted to the planned use described in the post-closure maintenance plan [Title 27, § 20515(a)(4) and §21170, and 40 C.F.R. § 258.60(i)].
20. Construction or repair of the final cover system's low-hydraulic conductivity layer is to be carried out in accordance with an approved construction quality assurance plan [Title 27, § 21090(b)(1)(E)].
21. The Discharger shall incorporate into the closure and post-closure maintenance plan a cover-integrity monitoring and maintenance program which includes at least the following: a periodic leak search, periodic identification of other problem areas, prompt cover repair, and vegetation maintenance [Title 27, § 21090(a)(4)].
22. The Discharger shall complete a final cover survey upon completion of closure activities for that portion of the landfill. The final cover surveys shall include an initial survey and map [Title 27, § 21090(e)(1). Every **five years**, the Discharger shall conduct a survey of the closed landfill cover and submit an iso-settlement map accurately depicting the estimated total change in elevation of each portion of the final cover's low-hydraulic-conductivity layer [Title 27, § 21090(e)(2)].
23. Within **30 days** of completion of all closure activities, the Discharger shall certify that all closure activities were performed in accordance with the most recently approved final closure plan and CQA Plan, and in accordance with all applicable regulations. The Discharger shall also certify that closed landfill units shall be maintained in accordance with and approved post-closure maintenance plan [Title 27, § 21710(c)(6)].
24. Within **180 days** of completion of closure construction activities, the Discharger shall submit final documentation of closure, including the Certification of Closure. The closure documents shall include a final construction quality assurance report and any other documents necessary to support the certification [Title 27, § 21880].
25. The post-closure maintenance period shall continue until the Central Valley Water Board determines that wastes remaining in the landfill unit(s) no longer pose a threat to water quality [Title 27, § 20950(a)(1)].

26. The Discharger shall conduct a periodic leak search to monitor of the integrity of the final cover in accordance with the schedule in the approved final post-closure maintenance plan [Title 27, § 21090(a)(4)(A)].
27. The Discharger shall periodically inspect and identify problems with the final cover including areas that require replanting, erosion, areas lacking free drainage, areas damaged by equipment operations, and localized areas identified in the required five-year iso-settlement survey [Title 27, § 21090(a)(4)(B)].
28. The Discharger shall repair the cover promptly in accordance with a cover repair plan to be included in the final post-closure maintenance plan [Title 27, § 21090(a)(4)(C)].
29. Throughout the post-closure maintenance period, the Discharger shall maintain the structural integrity and effectiveness of all containment structures, maintain the final cover as necessary to correct the effects of settlement and other adverse factors, continue to operate the LCRS as long as leachate is generated and detected, maintain the monitoring systems, prevent erosion and related damage of the final cover due to drainage, and protect and maintain surveyed monuments [Title 27, § 21090(c)].
30. Post-closure maintenance shall be conducted for a minimum period of **30 years** or until the waste no longer poses a threat to environmental quality, whichever is greater [Title 27, § 21180(a) and Title 27, § 21900(a)].

H. STANDARD FINANCIAL ASSURANCE PROVISIONS

1. The Discharger shall establish an irrevocable fund for closure and post-closure maintenance to ensure closure and post-closure maintenance of each classified unit in accordance with an approved closure and post-closure maintenance plan [Title 27, § 20950(f) and § 22207(a)].
2. The Discharger shall obtain and maintain assurances of financial responsibility for initiating and completing corrective action for all known and reasonably foreseeable releases from the waste management unit [Title 27, §20380(b), § 22221, and § 22222].

I. STANDARD MONITORING SPECIFICATIONS

1. The water quality monitoring program shall include appropriate and consistent sampling and analytical procedures and methods designed to ensure that monitoring results provide a reliable indication of water quality at all monitoring points and background monitoring points [Title 27, § 20415(e)(4) and 40 C.F.R. § 258.53(b)].

2. All monitoring systems shall be designed and certified by a registered geologist or a registered civil engineer [Title 27, § 20415(e)(1)].
3. All monitoring wells shall be cased and constructed in a manner that maintains the integrity of the monitoring well bore hole and prevents the bore hole from acting as a conduit for contaminant transport [Title 27, § 20415(b)(4)(A)].
4. All sample chemical analyses of any material shall be performed by a laboratory certified by the California Department of Health Services [Wat. Code, § 13176(a)].
5. A Detection Monitoring Program for a new landfill facility shall be installed, operational, and one year of monitoring data collected from background monitoring points prior to the discharge of wastes [Title 27, § 20415(e)(6)].
6. Background for water samples or soil-pore gas samples shall be represented by the data from all samples taken from applicable background monitoring points during that reporting period (at least one sample from each background monitoring point).
7. The Discharger shall submit for approval, establish, and maintain an approved Sample Collection and Analysis Plan. The Sample Collection and Analysis Plan shall at a minimum include:
 - a. Sample collection procedures describing purging techniques, sampling equipment, and decontamination of sampling equipment;
 - b. Sample preservation information and shipment procedures;
 - c. Sample analytical methods and procedures;
 - d. Sample quality assurance/quality control (QA/QC) procedures;
 - e. Chain of Custody control; and
 - f. Sample analysis information including sample preparation techniques to avoid matrix interferences, method detection limits (MDLs), practical quantitation limits (PQLs) and reporting limits (RLs), and procedures for reporting trace results between the MDL and PQL.

If required by the Executive Officer, the Discharger shall modify the Sample Collection and Analysis Plan to conform with this Order.

8. For any given monitored medium, the samples taken from all monitoring points and background monitoring points to satisfy the data analysis requirements for a given reporting period shall all be taken **within a span not to exceed 30 days**, unless a longer time period is approved, and shall be taken in a manner that

ensures sample independence to the greatest extent feasible. Specific methods of collection and analysis must be identified. Sample collection, storage, and analysis shall be performed according to the most recent version of USEPA Methods, such as the latest editions, as applicable, of: (1) Methods for the Analysis of Organics in Water and Wastewater (USEPA 600 Series), (2) Test Methods for Evaluating Solid Waste (SW-846, latest edition), and (3) Methods for Chemical Analysis of Water and Wastes (USEPA 600/4-79-020), and in accordance with the approved Sample Collection and Analysis Plan. Appropriate sample preparation techniques shall be used to minimize matrix interferences.

9. If methods other than USEPA-approved methods or Standard Methods are used, or there is a proposed alternant USEPA method than the one listed in the MRP, the proposed methodology shall be submitted for review and approval prior to use, including information showing its equivalence to the required method.
10. The **methods of analysis and the detection limits** used must be appropriate for the expected concentrations. For the monitoring of any constituent or parameter that is found in concentrations which produce more than 90% non-numerical determinations (i.e., "trace" or "ND") in data from background monitoring points for that medium, the analytical method having the lowest MDL shall be selected from among those methods which would provide valid results in light of any matrix effects or interferences.
11. The laboratory reporting limit (RL) for all reported monitoring data shall be set no greater than the practical quantitation limit (PQL).
12. **"Trace" results** - results falling between the MDL and the PQL - shall be reported as such, and shall be accompanied both by the estimated MDL and PQL values for that analytical run.
13. Laboratory data shall not be altered or revised by the Discharger. If the Discharger observes potential lab errors, it shall identify the issue in the monitoring report and shall describe steps that will be taken to prevent similar errors in the future.
14. **MDLs and PQLs** shall be derived by the laboratory for each analytical procedure, according to State of California laboratory accreditation procedures. These MDLs and PQLs shall reflect the detection and quantitation capabilities of the specific analytical procedure and equipment used by the lab, rather than simply being quoted from USEPA analytical method manuals. In relatively interference-free water, laboratory-derived MDLs and PQLs are expected to closely agree with published USEPA MDLs and PQLs. MDLs and PQLs shall be reported.

15. If the laboratory suspects that, due to a change in matrix or other effects, the true detection limit or quantitation limit for a particular analytical run differs significantly from the laboratory-derived MDL/PQL values, the results shall be flagged in the laboratory report accordingly, along with estimates of the detection limit and quantitation limit actually achieved. The **MDL shall always be calculated such that it represents the lowest achievable concentration associated with a 99% reliability of a nonzero result.** The PQL shall always be calculated such that it represents the lowest constituent concentration at which a numerical value can be assigned with reasonable certainty that it represents the constituent's actual concentration in the sample. Normally, PQLs should be set equal to the concentration of the lowest standard used to calibrate the analytical procedure.
16. All **QA/QC data** shall be reported, along with the sample results to which they apply, including the method, equipment, analytical detection and quantitation limits, the percent recovery, an explanation for any recovery that falls outside the QC limits, the results of equipment and method blanks, the results of spiked and surrogate samples, the frequency of quality control analysis, and the name and signature of a responsible person from the laboratory. **Sample results shall be reported unadjusted for blank results or spike recoveries.** In cases where contaminants are detected in QA/QC samples (i.e., field, trip, or lab blanks), the accompanying sample results shall be appropriately flagged, but the analytical results shall not be adjusted.
17. Unknown chromatographic peaks shall be reported, flagged, and tracked for potential comparison to subsequent unknown peaks that may be observed in future sampling events. Identification of unknown chromatographic peaks that recur in subsequent sampling events may be required.
18. The sampling interval of each monitoring well shall be appropriately screened and fitted with an appropriate filter pack to enable collection of representative groundwater samples [Title 27, § 20415(b)(4)(B)]. Groundwater samples shall not be field-filtered prior to laboratory analysis [40 C.F.R. § 258.53(b)]. Groundwater samples needing filtering (e.g., samples to be analyzed for dissolved metals) shall be filtered by the laboratory prior to analysis.
19. Groundwater elevations shall be measured in each well immediately prior to purging, each time groundwater is sampled. The owner or operator shall determine the rate and direction of groundwater flow each time groundwater is sampled. Groundwater elevations in wells which monitor the same waste management area shall be measured within a period of time short enough to avoid temporal variations in groundwater flow which could preclude accurate determination of groundwater flow rate and direction [40 C.F.R. § 258.53(d)].
20. Monitoring wells, piezometers, and other measurement, sampling, and analytical devices must be operated and maintained so that they perform to design

specifications throughout the life of the monitoring program [40 C.F.R. § 258.51(c)(2)]. Monitoring devices that cannot be operated and maintained to perform to design specifications shall be replaced after review and approval of a report (i.e., work plan) for the proposed replacement devices.

21. All borings are to be logged during drilling under the direct supervision of a registered geologist or registered civil engineer with expertise in stratigraphic well logging [Title 27, § 20415(e)(2)].
22. Soils are to be described according to the Unified Soil Classification System [Title 27, § 20415(e)(2)(A)]. Rock is to be described in a manner appropriate for the purpose of the investigation [Title 27, § 20415(e)(2)(B)].
23. The Discharger shall submit a work plan for review and approval at least **60 days** prior to installation or abandonment of groundwater monitoring wells.
24. The Discharger shall provide Central Valley Water Board staff a minimum of **one week** notification prior to commencing any field activities related to the installation or abandonment of monitoring devices.
25. The water quality protection standard shall consist of the constituents of concern (COC), concentration limits, and the point of compliance. The water quality protection standard shall apply during the active life of the waste management unit, closure period, post-closure maintenance period, and any compliance period under Title 27, section 20410 [Title 27, § 20390].
26. The point of compliance at which the water quality protection standard applies is a vertical surface located at the hydraulically downgradient limit of the waste management unit that extends through the uppermost aquifer underlying the unit [Title 27, § 20405].
27. The compliance period is the minimum period of time during which the Discharger shall conduct a water quality monitoring program and is the number of years equal to the active life of the waste management unit plus the closure period [Title 27, § 20410(a)].
28. The groundwater monitoring system shall include a sufficient number of monitoring points, installed at appropriate locations, to yield groundwater samples from the uppermost aquifer that represent the quality of groundwater that has not been affected by a release from the waste management unit [Title 27, § 20415(b)(1)(A)].
29. The Detection Monitoring Program shall include a sufficient number of monitoring points, installed at appropriate locations and depths to yield groundwater samples from the uppermost aquifer that represent the quality of

groundwater passing the point of compliance to allow the detection of a release from the waste management unit [Title 27, § 20415(b)(1)(B)1.].

30. Additional monitoring points shall be added as necessary to provide the best assurance of the **earliest possible detection** of a release from the waste management unit [Title 27, § 20415(b)(1)(B)2.].
31. The Detection Monitoring Program shall also include a sufficient number of monitoring points installed at appropriate depths and locations to yield groundwater samples from other aquifers or perched zones not already monitored to provide the **earliest possible detection** of a release from the waste management unit [Title 27, § 20415(b)(1)(B)3. and 4., and §20420(b)].
32. A surface water monitoring system shall be established to monitor each surface water body that could be affected by a release from the waste management unit [Title 27, § 20415(c)].
33. An unsaturated zone monitoring system shall be established for each waste management unit [Title 27, § 20415(d)].
34. The Discharger shall notify Central Valley Water Board staff within **seven days** if fluid is detected in a previously dry LCRS, unsaturated zone monitoring system, or if a progressive increase is detected in the volume of fluid in a LCRS [Title 27, § 21710(c)(3)].
35. Driller's logs for all monitoring wells shall to be submitted to the Central Valley Water Board and the Department of Water Resources [Wat. Code, § 13751 and Title 27, § 20415(b)(3)].
36. Groundwater elevation, temperature, electrical conductivity, turbidity, and pH are to be accurately measured at each well each time groundwater is sampled [Title 27, § 21415(e)(13)].
37. The groundwater flow rate and direction in the uppermost aquifer and in any zones of perched water and in any additional portions of the zone of saturation being monitored shall be determined at least quarterly [Title 27, § 20415(e)(15)].
38. The Discharger shall graph all analytical data from each monitoring point and background monitoring point and shall submit the graphs to the Central Valley Water Board annually [Title 27, § 20415(e)(14)].
39. For each waste management unit, the Discharger shall collect all data necessary for selecting appropriate data analysis methods for establishing background values for each constituent of concern and for each monitoring parameter [Title 27, § 20420(c)]. The Discharger shall propose a data analysis method that includes a detailed description of the criteria to be used for

determining “measurably significant” (as defined in Title 27, section 20164) evidence of a release from the waste management unit and determining compliance with the water quality protection standard [Title 27, § 20415(e)(6) and (7)].

40. For statistical analysis of data, the Discharger shall use one of the methods described in Title 27, section 20415(e)(8)(A)-(E). A non-statistical data analysis method can be used if the method can achieve the goal of the particular monitoring program at least as well as the most appropriate statistical method [Title 27, § 20415(e)(8)]. The Discharger shall use a statistical or nonstatistical data analysis method that complies with Title 27, section 20415(e)(7, 8, 9, and 10), to compare the concentration of each constituent of concern or monitoring parameter with its respective background concentration to determine whether there has been a measurably significant evidence of a release from the waste management unit. For any given monitoring point at which a given constituent has already exhibited a measurably significant indication of a release at that monitoring point, the Discharger may propose to monitor the constituent, at that well, using a concentration-versus-time plot.
41. The Discharger may propose an alternate statistical method [to the methods listed under Title 27, section 20415(e)(8)(A-D)] in accordance with Title 27, section 20415(e)(8)(E), for review and approval.
42. The statistical method shall account for data below the practical quantitation limit (PQL) with one or more statistical procedures that are protective of human health and the environment. Any PQL validated pursuant to Title 27, section 20415(e)(7) that is used in the statistical method shall be **the lowest concentration (or value) that can be reliably achieved** within limits of precision and accuracy specified in the WDRs or an approved Sample Collection and Analysis Plan for routine laboratory operating conditions that are available to the facility. The Discharger’s technical report (Sample Collection and Analysis Plan and/or Water Quality Protection Standard Report), pursuant to Title 27, section 20415(e)(7), shall consider the PQLs listed in Appendix IX to Chapter 14 of Division 4.5 of Title 22, CCR, for guidance when specifying limits of precision and accuracy. For any given constituent monitored at a background or downgradient monitoring point, an indication that falls between the MDL and the PQL for that constituent (hereinafter called a “trace” detection) shall be identified and used in appropriate statistical or non-statistical tests. Nevertheless, for a statistical method that is compatible with the proportion of censored data (trace and ND indications) in the data set, the Discharger can use the laboratory’s concentration estimates in the trace range (if available) for statistical analysis, in order to increase the statistical power by decreasing the number of “ties”.
43. The water quality protection standard for organic compounds which are not naturally occurring and not detected in background groundwater samples shall

be taken as the detection limit of the analytical method used (e.g., USEPA methods 8260 and 8270).

44. Alternate statistical procedures may be used for determining the significance of analytical results for common laboratory contaminants (i.e., methylene chloride, acetone, diethylhexyl phthalate, and di-n-octyl phthalate) if part of an approved water quality protection standard. Nevertheless, analytical results involving detection of these analytes in any background or downgradient sample shall be reported and flagged for easy reference by Central Valley Water Board staff.
45. **Confirmation of Measurably Significant Evidence of a Release.** Whenever a constituent is detected at a detection monitoring point at a concentration that exceeds the concentration limit from the water quality protection standard, the Discharger shall conduct verification sampling to confirm if the exceedance is due to a release or if it is a false-positive (unless previous monitoring has already confirmed a release for that constituent at that monitoring point). An exceedance of the concentration limit from the water quality protection standard is considered measurably significant evidence of a release that must be either confirmed or denied. There are two separate verification testing procedures:
- a. Standard Monitoring Specification I.46 provides the procedure for analytes that are detected in less than 10% of the background samples such as non-naturally occurring constituents like volatile organic compounds; and
 - b. Standard Monitoring Specification I.47 provides the procedure for analytes that are detected in 10% or greater of the background samples such as naturally occurring constituents like chloride.
46. **Verification Procedure for Analytes Detected in Less than 10% of Background Samples.** The Discharger shall use the following non-statistical method for all analytes that are detected in less than 10% of the background samples. The non-statistical method shall be implemented as follows:
- a. **Initial Determination of Measurably Significant Evidence of a Release.** Identify each analyte in the **current** detection monitoring point sample that exceeds either its respective MDL or PQL, and for which a release has not been previously confirmed. The Discharger shall conclude that the exceedance provides a preliminary indication of a release or a change in the nature or extent of the release, at that monitoring point, if **either**:
 - 1) The data contains two or more analytes that equal or exceed their respective MDLs; or
 - 2) The data contains one or more analyte that equals or exceeds its PQL.

b. **Discrete Retest** [Title 27, § 20415(e)(8)(E) and § 20420(j)(1-3)]:

- 1) In the event that the Discharger or Central Valley Water Board staff concludes (pursuant to paragraph I.46.a., above) that there is a preliminary indication of a release, then the Discharger shall **immediately** notify Central Valley Water Board staff by phone or e-mail and, within **30 days** of such indication, shall collect two new (retest) samples from the monitoring point where the release is preliminarily indicated and analyze them for the constituents that caused the need for the retest.
- 2) **Confirmation of a Release.** As soon as the retest data are available, the Discharger shall conclude that measurably significant evidence of a release is confirmed if (not including the original sample) two or more analytes equal or exceed their respective MDLs or if one or more analyte equals or exceeds its PQL. The Discharger shall then:
 - a) **Immediately** verbally notify the Central Valley Water Board whether or not the retest confirmed measurably significant evidence of a release for the analyte at the monitoring point, and follow up with written notification submitted by certified mail **within seven days** of the verbal notification; and
 - b) Carry out the requirements of Section J, **RESPONSE TO A RELEASE** if a release has been confirmed.
 - c) Add any five-year analyte that is confirmed per this method to the monitoring parameter list such that it is monitored during each regular monitoring event.

47. **Verification Procedure for Analytes Detected in 10% or Greater of the Background Samples.** The Discharger shall use either a statistical or non-statistical method pursuant to Title 27, section 20415(e)(8)(E) for all analytes that are detected in 10% or greater of the background samples. The Discharger shall use one of the statistical methods required in Title 27, section 20415(e)(8)(E) unless another method has been proposed by the Discharger in a Water Quality Protection Standard Report (or equivalent report) and approved by the Central Valley Water Board in a Monitoring and Reporting Program pursuant to Title 27, section 20415(e)(8)(A-D)] or section 20415(e)(8)(E). The method shall be implemented as follows:

- a. **Initial Determination of Measurably Significant Evidence of a Release.** The Discharger shall compare the value reported by the laboratory for each analyte to the statistically-derived concentration limit from the most recent report (Annual Monitoring Report or Water Quality Protection Standard Report) that uses the approved statistical procedure. If the value exceeds

the concentration limit for that constituent, the Discharger shall conclude that there is measurably significant evidence of a release [Title 27, § 20420(i)].

b. **Retest Method** [Title 27, § 20415(e)(8)(E) and § 20420(j)(1-3)].

- 1) In the event that the Discharger or Central Valley Water Board staff concludes (pursuant to paragraph I.47.a., above) that there is a preliminary indication of a release, then the Discharger shall **immediately** notify Central Valley Water Board staff by phone or e-mail and, within **30 days** [Title 27, § 20415(e)(3)] of such indication, the Discharger shall implement a verification procedure/retest option, in accordance with Title 27, sections 20415(e)(8)(E) and 20420(j)(2). The verification procedure shall include either a single “composite” retest (i.e., a statistical analysis that augments and reanalyzes the data from the monitoring point that indicated a release) or shall consist of at least two “discrete” retests (i.e., statistical analyses each of which analyzes only newly-acquired data from the monitoring point that indicated a release) [Title 27, § 20415(e)(8)(E)]. The Discharger may use an alternate method previously approved by the Central Valley Water Board and included in the Monitoring and Reporting Program. The verification procedure shall comply with the requirements of Title 27, section 20415(e)(8)(E) in addition to the performance standards of Title 27, section 20415(e)(9). The retest samples shall be collected from the monitoring point where the release is preliminarily indicated and shall be analyzed for the constituents that caused the need for the retest. For any indicated monitoring parameter or constituent of concern, if the retest results of one or more of the retest data suites confirm the original indication, the Discharger shall conclude that measurably significant evidence of a release has been confirmed.
- 2) **Confirmation of a Release.** As soon as the retest data are available, the Discharger shall evaluate the results pursuant to paragraph I.47.b.1, above and shall:
 - a) **Immediately** verbally notify the Central Valley Water Board whether or not the retest confirmed measurably significant evidence of a release for the analyte at the monitoring point, and follow up with written notification submitted by certified mail **within seven days** of the verbal notification; and
 - b) Carry out the requirements of Section J, **RESPONSE TO A RELEASE** if a release has been confirmed.
 - c) Add any five-year analyte that is confirmed per this method to the monitoring parameter list such that it is monitored during each regular monitoring event.

48. **Physical Evidence of a Release.** If the Discharger determines that there is a significant **physical** evidence of a release, the Discharger shall immediately verbally notify Central Valley Water Board staff and provide written notification **by certified mail within 7 days** of such determination, and within **90 days** shall submit an amended report of waste discharge to establish an Evaluation Monitoring Program [Title 27, § 20385(a)(3) and § 20420(l)(1) & (2)].

J. RESPONSE TO A RELEASE

1. **Measurably Significant Evidence of a Release Has Been Confirmed.** If the Discharger has confirmed that there is measurably significant evidence of a release from a waste management unit pursuant to Standard Monitoring Specification I.46 or I.47, then the Discharger shall:

- a. **Immediately** sample all monitoring points in the affected medium at that waste management unit and determine the concentration of all monitoring parameters and constituents of concern for comparison with established concentration limits. Because this constituent of concern scan does not involve statistical testing, the Discharger will need to collect and analyze only a single water sample from each monitoring point in the affected medium [Title 27, § 20420(k)(1)].
- b. **Within 14 days** of confirming measurably significant evidence of a release, the Discharger shall (for releases from MSW landfill units) notify all persons who own the land or reside on the land that directly overlies any portion of the plume of contamination if contaminants have migrated off-site if indicated by sampling of detection monitoring wells [40 C.F.R. § 258.55(g)(1)(iii)].
- c. **Within 90 days** of confirming measurably significant evidence of a release, the Discharger shall submit an amended report of waste discharge to establish an Evaluation Monitoring Program meeting the requirements of Title 27, sections 20420(k)(5)(A-D), including but not limited to the results of sampling pursuant to paragraph J.1.a, above. The Evaluation Monitoring Program shall be designed for the collection and analysis of all data necessary to assess the nature and extent of the release and to determine the spatial distribution and concentration of each constituent throughout the zone affected by the release [Title 27, § 20420(k)(5) and § 20425(b)]. For releases from MSW landfill units, the Evaluation Monitoring Program shall also include any additional proposals necessary to comply with 40 C.F.R. § 258.55, particularly the additional monitoring well required by 40 C.F.R. § 258.55(g)(1)(ii).
- d. **Within 180 days** of confirming measurably significant evidence of a release, the Discharger shall submit to the Central Valley Water Board an initial engineering feasibility study for a Corrective Action Program

necessary to meet the requirements of Title 27, section 20430. At a minimum, the initial engineering feasibility study shall contain a detailed description of the corrective action measures that could be taken to achieve background concentrations for all constituents of concern [Title 27, § 20420(k)(6)].

- e. If the Discharger confirms that there is measurably significant evidence of a release from the waste management unit at any monitoring point, the Discharger may attempt to demonstrate that a source other than the waste management unit caused the evidence of a release or that the evidence is an artifact caused by an error in sampling, analysis, or statistical evaluation or by natural variation in groundwater, surface water, or the unsaturated zone. The Discharger may make a demonstration pursuant to Title 27, section 20420(k)(7) in addition to or in lieu of submitting both an amended report of waste discharge or an engineering feasibility study; however, the Discharger is not relieved of the requirements and due dates of Title 27, sections 20420(k)(6) & (7) unless Central Valley Water Board staff agree that the demonstration successfully shows that a source other than the waste management unit caused the evidence of a release or that the evidence resulted from error in sampling, analysis, or statistical evaluation or from natural variation in groundwater, surface water, or the unsaturated zone. In order to make this demonstration, the Discharger shall notify the Central Valley Water Board by certified mail of the intent to make the demonstration **within seven days** of determining measurably significant evidence of a release, and shall submit a report **within 90 days** of determining measurably significant evidence of a release [Title 27, § 20420(k)(7)].
- f. **Within 90 days** of the date that the Evaluation Monitoring Program from paragraph J.1.c is approved (the date is it established), the Discharger shall complete and submit the following:
 - i) **Results and Assessment for the Evaluation Monitoring Program.** A report with the results and assessment based on the approved Evaluation Monitoring Program [Title 27, § 20425(b)].
 - ii) **Updated Engineering Feasibility Study.** An updated engineering feasibility study for corrective action based on the data collected to delineate the release and data from the ongoing monitoring program required under Title 27, section 20425(e) [Title 27, § 20425(c)].
 - iii) **Amended ROWD for a Corrective Action Program.** An amended report of waste discharge to establish a Corrective Action Program meeting the requirements of Title 27, section 20430 based on the data collected to delineate the release and based on the updated engineering feasibility study [Title 27, § 20425(d)].

- g. The Discharger shall (for releases from MSW landfill units) discuss the results of the updated engineering feasibility study, prior to the final selection of a remedy, in a public meeting with interested and affected parties [40 C.F.R. § 258.56(d)].

K. GENERAL PROVISIONS

1. In the event the Discharger does not comply or will be unable to comply with any prohibition or limitation of this Order for any reason, the Discharger shall notify the appropriate Central Valley Water Board office by telephone **as soon as** it or its agents have knowledge of such noncompliance or potential for noncompliance, and shall confirm this notification in writing **within two weeks**. The written notification shall state the nature, time, and cause of noncompliance, and shall describe the measures being taken to prevent recurrences and shall include a timetable for corrective actions.
2. All reports and transmittal letters shall be signed by persons identified below:
 - a. For a corporation: by a principal executive officer of at least the level of senior vice-president.
 - b. For a partnership or sole proprietorship: by a general partner or the proprietor.
 - c. For a municipality, state, federal or other public agency: by either a principal executive officer or ranking elected or appointed official.
 - d. A duly authorized representative of a person designated in a, b or c above if:
 - 1) The authorization is made in writing by a person described in a, b, or c of this provision;
 - 2) The authorization specifies either an individual or a position having responsibility for the overall operation of the regulated facility or activity, such as the position of plant manager, operator of a Unit, superintendent, or position of equivalent responsibility (a duly authorized representative may thus be either a named individual or any individual occupying a named position); and
 - 3) The written authorization is submitted to the Central Valley Water Board.

- e. Any person signing a document under this Section shall make the following certification:

“I certify under penalty of law that I have personally examined and am familiar with the information submitted in this document and all attachments and that, based on my inquiry of those individuals immediately responsible for obtaining the information, I believe that the information is true, accurate, and complete. I am aware that there are significant penalties for submitting false information, including the possibility of fine and imprisonment.”

3. The Discharger shall take all reasonable steps to minimize any adverse impact to the waters of the State resulting from noncompliance with this Order. Such steps shall include accelerated or additional monitoring as necessary to determine the nature, extent, and impact of the noncompliance.
4. The owner of the waste management facility shall have the continuing responsibility to assure protection of waters of the state from discharged wastes and from gases and leachate generated by discharged waste during the active life, closure, and post-closure maintenance period of the waste management units and during subsequent use of the property for other purposes.
5. The fact that it would have been necessary to halt or reduce the permitted activity in order to maintain compliance with this Order shall not be regarded as a defense for the Discharger’s violations of this Order.
6. The Discharger shall notify the Central Valley Water Board of a material change in; the types, quantity, or concentrations of wastes discharged; site operations and features; or proposed closure procedures, including changes in cost estimates. This notification shall be given a reasonable time before the changes are made or become effective. No changes shall be made without Central Valley Water Board approval following authorization for closure pursuant to the site Notification of Closure [Title 27, § 21710(a)(4)].
7. The Discharger shall maintain legible records of the volume and type of each waste discharged at each waste management unit or portion of a unit, and the manner and location of discharge. Such records shall be maintained by the Discharger until the beginning of the post-closure maintenance period. These records shall be on forms approved by the State Water Board or Central Valley Water Board and shall be maintained at the waste management facility until the beginning of the post-closure maintenance period. These records shall be available for review by representatives of the State Water Board or Central Valley Water Board at any time during normal business hours. At the beginning of the post-closure maintenance period, copies of these records shall be sent to the Central Valley Water Board [Title 27, § 21720(f)].
8. In the event of any change in landowner or the operator of the waste management facility, the Discharger shall notify the succeeding owner or

operator in writing of the existence of this Order. A copy of that notification shall be sent to the Central Valley Water Board.

9. In the event of any change of ownership or responsibility for construction, operation, closure, or post-closure maintenance of the waste discharge facilities described in this Order, the Discharger shall notify the Central Valley Water Board prior to the effective date of the change and shall include a statement by the new Discharger that construction, operation, closure, or post-closure maintenance will be in compliance with this Order and any revisions thereof [Title 27, § 21710(c)(1)].
10. To assume ownership or operation under this Order, the succeeding owner or operator must apply in writing to the Central Valley Water Board requesting transfer of the Order within **14 days** of assuming ownership or operation of this facility. The request must contain the requesting entity's full legal name, the State of incorporation if a corporation, the name and address and telephone number of the persons responsible for contact with the Central Valley Water Board, and a statement. The statement shall comply with the signatory requirements contained in General Provision K.2 and state that the new owner or operator assumes full responsibility for compliance with this Order. Failure to submit the request shall be considered a discharge without requirements, a violation of the Water Code. Transfer of this Order shall be approved or disapproved by the Central Valley Water Board.

L. STORM WATER PROVISIONS

1. New and existing Class III landfills shall be designed, constructed, operated, and maintained to prevent inundation or washout due to floods with a 100-year return period [Title 27, § 20260(c)].
2. New and existing Class II landfills shall be designed, constructed, operated, and maintained to prevent inundation or washout due to floods with a 100-year return period [Title 27, § 20250(c)].
3. The Discharger shall design storm water conveyance systems for Class III units for a 100-year, 24-hour storm event, and shall design storm water conveyance systems for Class II units for a 1,000-year, 24-hour storm event [Title 27, § 21750(e)(3)].
4. MSW landfills located in a 100-year floodplain shall demonstrate that the landfill unit will not restrict the flow of the 100-year flood, reduce the temporary water storage capacity of the floodplain, or result in washout of solid waste so as to pose a hazard to human health or the environment [40 C.F.R. § 258.11(a)].
5. Waste management units and their respective containment structures shall be designed and constructed to limit, to the greatest extent possible, ponding,

infiltration, inundation, erosion, slope failure, washout, and overtopping under the precipitation conditions for the unit [Title 27, § 20365(a)].

6. Precipitation on landfills or waste piles which is not diverted by covers or drainage control systems shall be collected and managed through the LCRS, which shall be designed and constructed to accommodate the precipitation conditions for each class unit [Title 27, § 20365(b)].
7. Diversion and drainage facilities shall be designed, constructed, and maintained to [Title 27, § 20365(c)]:
 - a. accommodate the anticipated volume of precipitation and peak flows from surface runoff and under the precipitation conditions for the waste management unit:
 - b. effectively divert sheet flow runoff laterally, via the shortest distance, into the drainage and collection facilities;
 - c. prevent surface erosion;
 - d. control and intercept run-on, in order to isolate uncontaminated surface waters from water that might have come into contact with waste;
 - e. take into account:
 - i) for closed waste management units and for closed portions of units, the expected final contours of the closed unit, including its planned drainage pattern;
 - ii) for operating portions of waste management units other than surface impoundments, the unit's drainage pattern at any given time;
 - iii) the possible effects of the waste management unit's drainage pattern on and by the regional watershed;
 - iv) the design capacity of drainage systems of downstream and adjacent properties by providing for the gradual release of retained water downstream in a manner which does not exceed the expected peak flow rate at the point of discharge if there were no waste management facility; and
 - f. preserve the system's function. The Discharger shall periodically remove accumulated sediment from the sedimentation or detention basins as needed to preserve the design capacity of the system.
8. Collection and holding facilities associated with precipitation and drainage control systems shall be emptied immediately following each storm or otherwise managed to maintain the design capacity of the system [Title 27, § 20365(d)].

9. Surface and subsurface drainage from outside of a waste management unit shall be diverted from the unit [Title 27, § 20365(e)].
10. Cover materials shall be graded to divert precipitation from the waste management unit, to prevent ponding of surface water over wastes, and to resist erosion as a result of precipitation [Title 27, § 20365(f)].
11. Any drainage layer in the final cover shall be designed and constructed to intersect with the final drainage system for the waste management unit in a manner promoting free drainage from all portions of the drainage layer [Title 27, §20365(f)].