

# Cannabis Cultivation Best Management Practices

These best management practices (BMPs) may help mitigate water pollution from cannabis cultivation activities. We recommend that you consult a professional engineer/contractor before starting an advanced BMP.

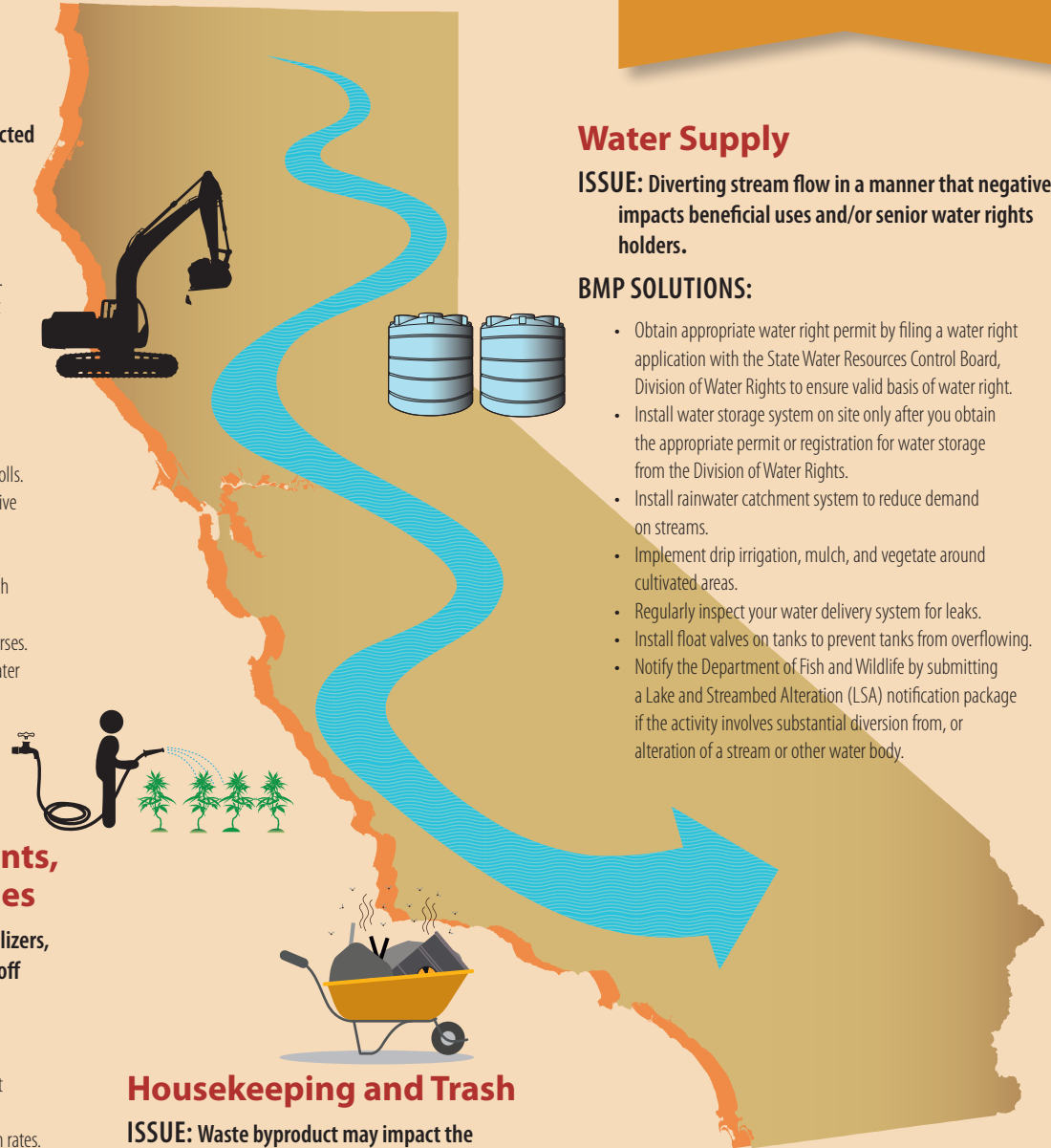
**LIABLE PARTIES:**  
Property Owner  
Site Caretaker  
Property Resident  
Construction Contractors

## Erosion & Sediments

**ISSUE:** Poorly maintained or badly constructed roads and excavation sites are a major source of sediment pollution.

### BMP SOLUTIONS:

- Minimize disturbed area and protect natural soil.
- Provide temporary cover for disturbed areas that are not being worked on.
- Divert runoff away from unprotected slopes or loose soils.
- Use mats, geotextiles, and erosion control blankets to protect slopes.
- Control the perimeter with silt fences and fiber rolls.
- Install a sediment basin, check dams, or vegetative buffer strips.
- Roughen the surface of a road with gravel.
- Protect ditches and inlet/outlet from erosion with rock armour.
- Plan and design new roads away from watercourses.
- Design roads to allow for sheet flow and use water bars and rolling dips to break up slope length.
- Inspect roads, slopes, and culverts regularly.



## Water Supply

**ISSUE:** Diverting stream flow in a manner that negatively impacts beneficial uses and/or senior water rights holders.

### BMP SOLUTIONS:

- Obtain appropriate water right permit by filing a water right application with the State Water Resources Control Board, Division of Water Rights to ensure valid basis of water right.
- Install water storage system on site only after you obtain the appropriate permit or registration for water storage from the Division of Water Rights.
- Install rainwater catchment system to reduce demand on streams.
- Implement drip irrigation, mulch, and vegetate around cultivated areas.
- Regularly inspect your water delivery system for leaks.
- Install float valves on tanks to prevent tanks from overflowing.
- Notify the Department of Fish and Wildlife by submitting a Lake and Streambed Alteration (LSA) notification package if the activity involves substantial diversion from, or alteration of a stream or other water body.

## Potting Soil, Amendments, Fertilizers, and Pesticides

**ISSUE:** Potting soil, soil amendments, fertilizers, and pesticides can be mobilized by runoff and be discharged into surface waters.

### BMP SOLUTIONS:

- Plant cover crop to boost soil fertility and protect from storm events.
- Follow the manufacturer's suggested application rates.
- Install buffer strips, bio-swales, or vegetation downslope of grow site to filter runoff of chemicals from irrigation.
- Do not apply pesticides. Instead, use safe pesticide alternatives recommended by Department of Pesticide Regulation.
- Implement Integrated Pest Management practices to avoid the need for pest control.
- Store all products that impact water quality in a manner that does not allow for runoff to surface waters.

## Housekeeping and Trash

**ISSUE:** Waste byproduct may impact the environment and water quality.

### BMP SOLUTIONS:

- Dispose of solid waste properly.
- Store paint, antifreeze, oil filters, fuels and other miscellaneous items indoors.
- Store other products that may affect water quality indoors.

Your responsibilities do not stop after BMPs are installed. You should routinely inspect your site.

More Information: State Water Resources Control Board  
(916) 341-5272 [OECannabis@waterboards.ca.gov](mailto:OECannabis@waterboards.ca.gov)  
[www.waterboards.ca.gov/water\\_issues/programs/enforcement/cannabis\\_enforcement.shtml](http://www.waterboards.ca.gov/water_issues/programs/enforcement/cannabis_enforcement.shtml)