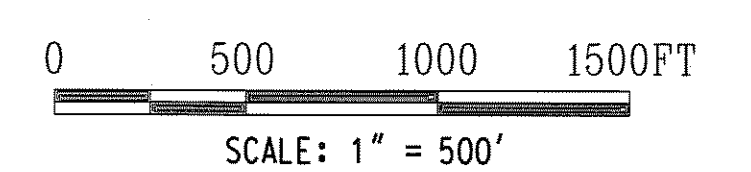


FOR INFORMATION ONLY.
DO NOT USE FOR CONSTRUCTION

- NOTES:
1. CONTOURS SHOWN ON THIS DRAWING ORIGINATED FROM USGS QUAD MAP TITLED "PORT SAN LUIS, CALIF."



Bechtel Confidential. © 2013 Bechtel Power Corporation (Bechtel). This document, prepared under Contract Job Number 25762, between Bechtel and PG&E, contains information confidential and/or proprietary to Bechtel that is not to be used, disclosed, or reproduced in any form by any person or entity other than Bechtel or PG&E without Bechtel's prior written permission. All rights reserved.

This document has been prepared by Bechtel exclusively for PG&E under contract job number 25762 and is not to be relied upon by any person or entity other than PG&E or used in conjunction with any other project.

△	/								
△	/								
△	/								
△	A/5/3	REVISED SPOILS AREAS AND REISSUED FOR ESTIMATE	MHN	-	BP	-	DD	-	
△	2/1/3	ISSUED FOR ESTIMATE	MHN	-	BP	-	DD	-	
ND	DATE	REVISIONS	BY	CHK	DESIGN SUPV	ENGR	PRJ ENGR		

SCALE 1"=500'

DESIGNED DRAWN MHN CHIEF ENGR

BECHTEL
FREDERICK, MARYLAND

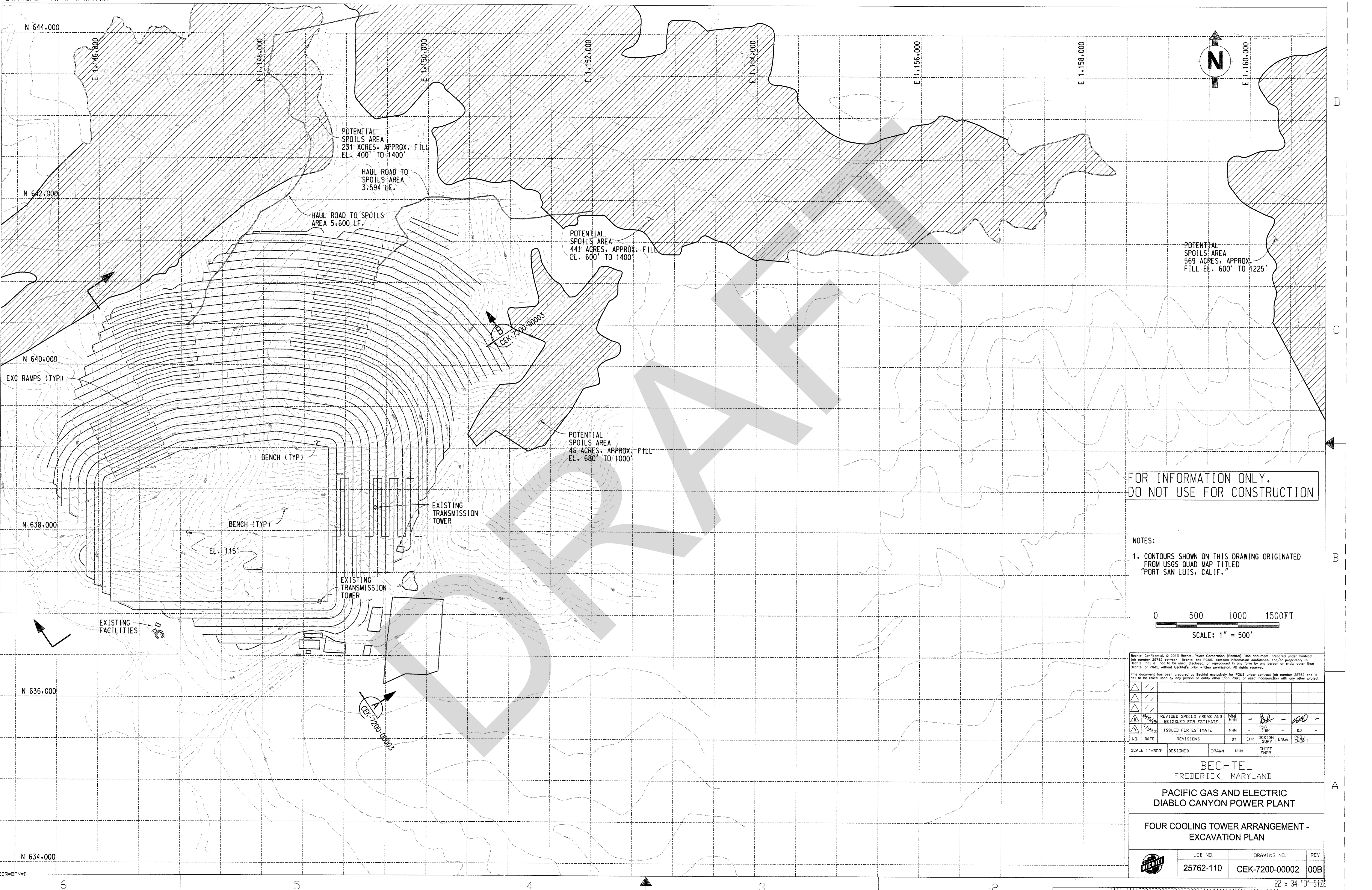
PACIFIC GAS AND ELECTRIC
DIABLO CANYON POWER PLANT

TWO COOLING TOWER ARRANGEMENT -
EXCAVATION PLAN

	JOB NO. 25762-110	DRAWING NO. CEK-7200-00001	REV 00B
--	----------------------	-------------------------------	------------

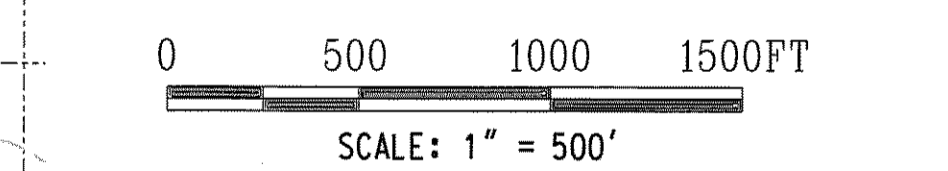
© Copyright Bechtel Corporation 2013. All rights reserved. Contains confidential information proprietary to Bechtel not to be disclosed to third parties without Bechtel's prior written permission.

FORMATS CEL AC=DSTD 5/9/05
 © Copyright Bechtel Corporation 2013. All rights reserved.
 Contains confidential information. Information is proprietary to Bechtel and PG&E. Information disclosed and/or proprietary to Bechtel that is not to be used, disclosed, or reproduced in any form by any person or entity other than Bechtel or PG&E without Bechtel's prior written permission. All rights reserved.
 This document has been prepared by Bechtel exclusively for PG&E under contract job number 25762 and is not to be relied upon by any person or entity other than PG&E or used in conjunction with any other project.
 PSC-BEN-DFN-E



FOR INFORMATION ONLY.
 DO NOT USE FOR CONSTRUCTION

- NOTES:
- CONTOURS SHOWN ON THIS DRAWING ORIGINATED FROM USGS QUAD MAP TITLED "PORT SAN LUIS, CALIF."



Bechtel Confidential. © 2013 Bechtel Power Corporation (Bechtel). This document, prepared under Contract job number 25762 between Bechtel and PG&E, contains information confidential and/or proprietary to Bechtel that is not to be used, disclosed, or reproduced in any form by any person or entity other than Bechtel or PG&E without Bechtel's prior written permission. All rights reserved.
 This document has been prepared by Bechtel exclusively for PG&E under contract job number 25762 and is not to be relied upon by any person or entity other than PG&E or used in conjunction with any other project.

△	/								
△	/								
△	7/15/13	REVISED SPOILS AREAS AND ISSUED FOR ESTIMATE	MHN	-	DD	-	DD	-	
△	7/24/13	ISSUED FOR ESTIMATE	MHN	-	DD	-	DD	-	
NO.	DATE	REVISIONS	BY	CHK	DESIGN SUPPLY	ENGR	PROJ. ENGR		
SCALE 1"=500'	DESIGNED	DRAWN	MHN						

BECHTEL
 FREDERICK, MARYLAND
 PACIFIC GAS AND ELECTRIC
 DIABLO CANYON POWER PLANT
 FOUR COOLING TOWER ARRANGEMENT -
 EXCAVATION PLAN

JOB NO.	DRAWING NO.	REV
25762-110	CEK-7200-0002	00B

