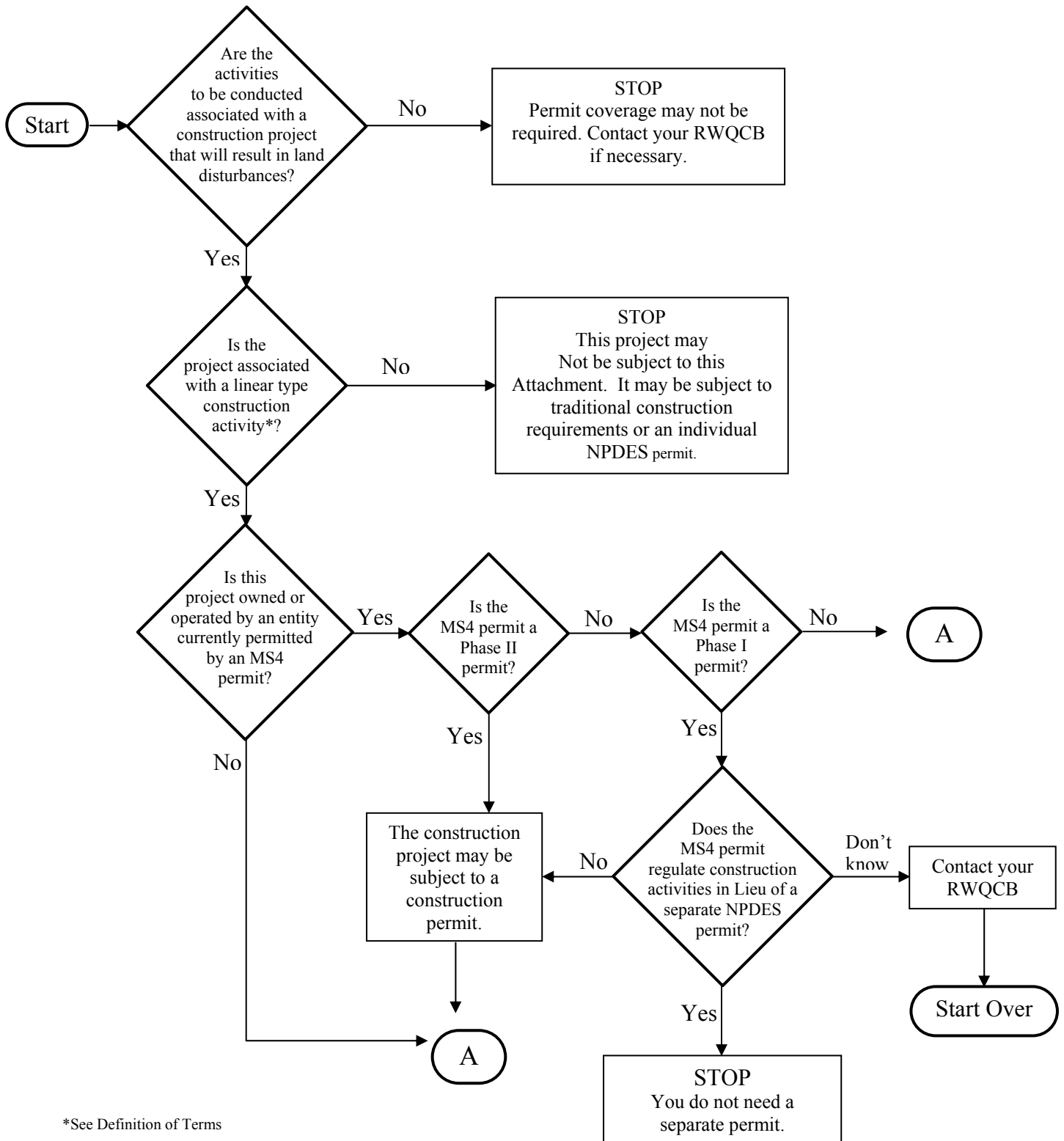


# LINEAR UNDERGROUND/OVERHEAD PROJECT FLOWCHARTS

Chart Number I

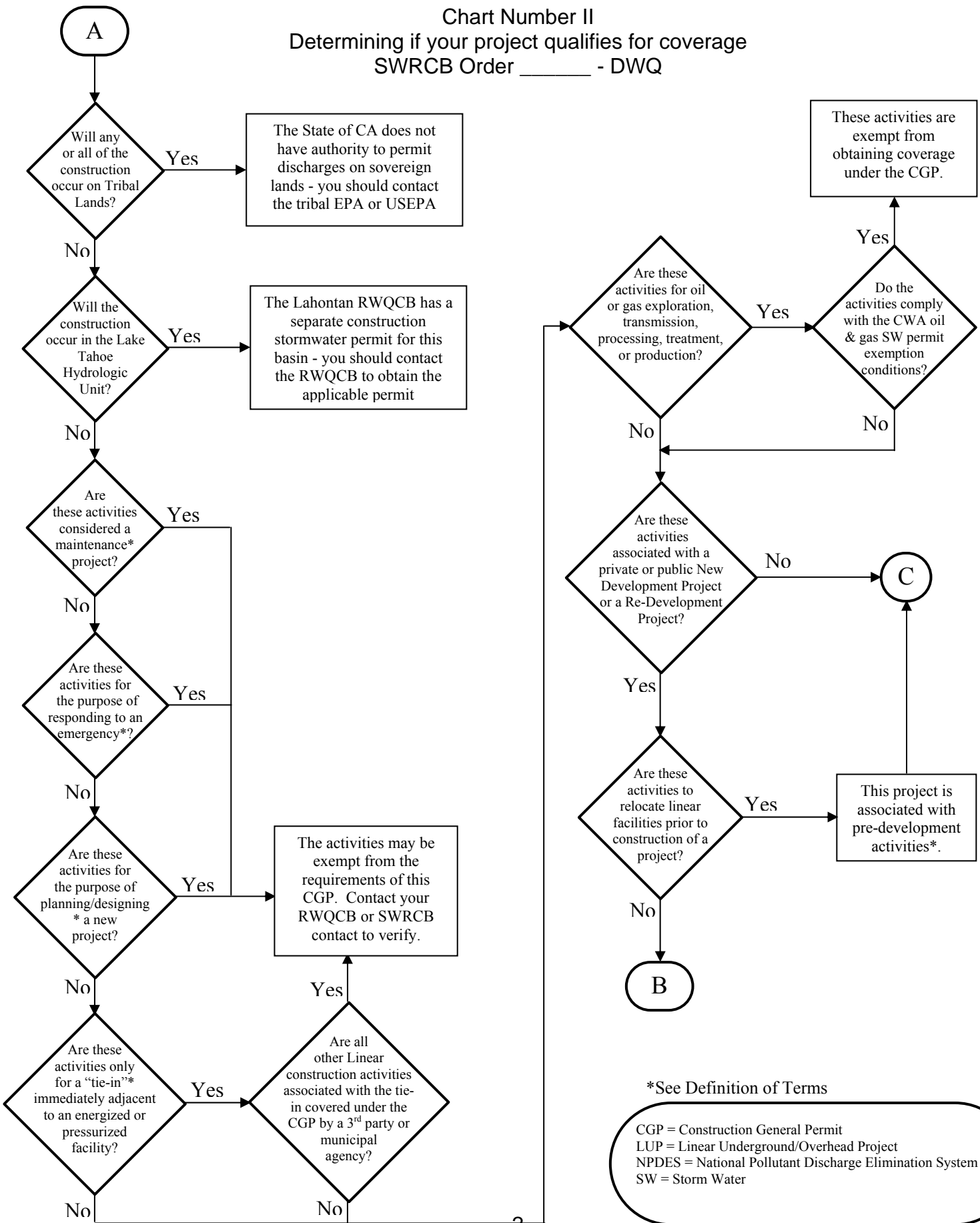
Determining if your project qualifies for coverage  
SWRCB Order \_\_\_\_\_ - DWQ



\*See Definition of Terms

MS4 = Municipal Separate Storm Sewer System  
RWQCB = Regional Water Quality Control Board  
NPDES = National Pollutant Discharge Elimination System

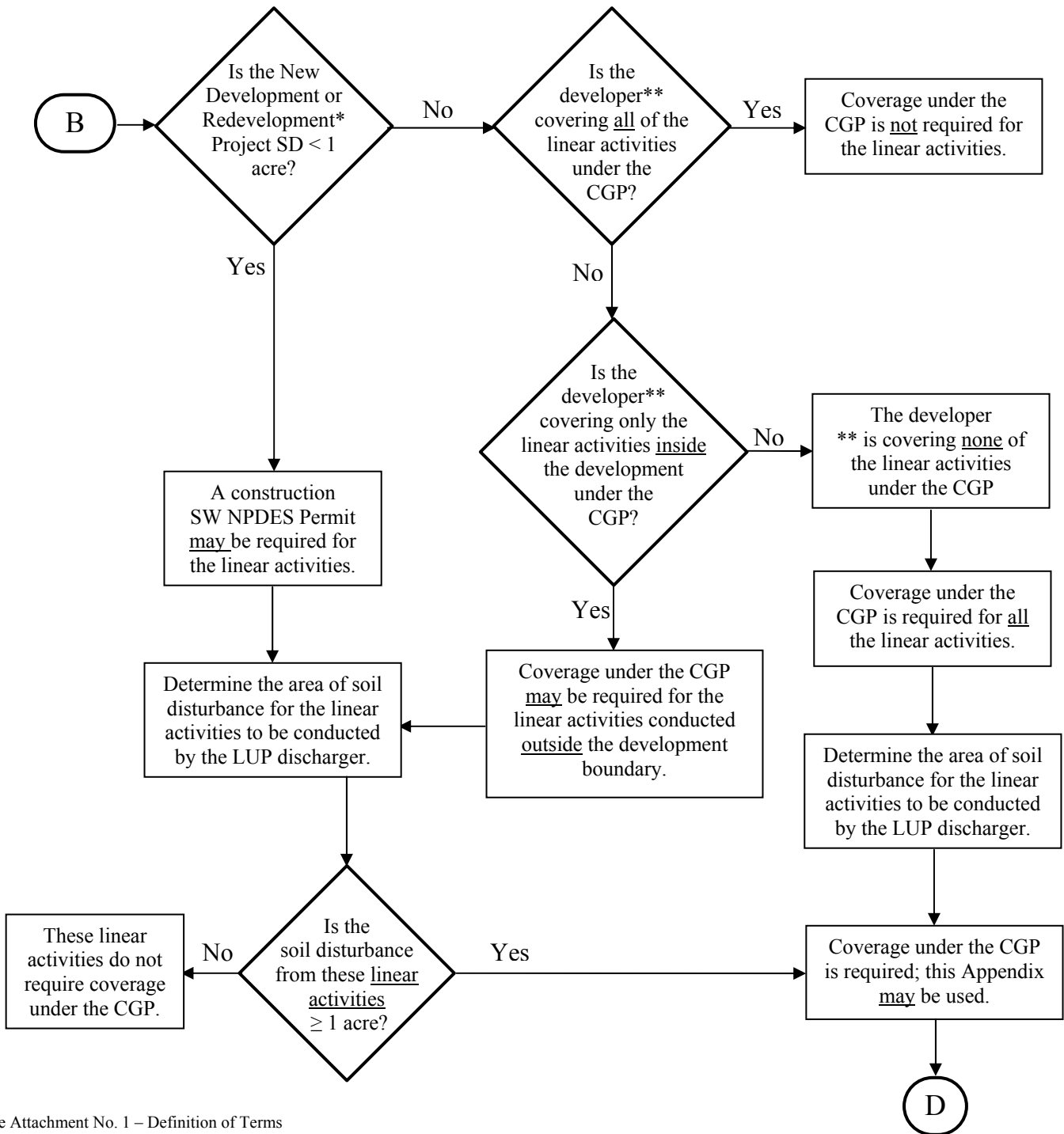
Chart Number II  
 Determining if your project qualifies for coverage  
 SWRCB Order \_\_\_\_\_ - DWQ



\*See Definition of Terms

- CGP = Construction General Permit
- LUP = Linear Underground/Overhead Project
- NPDES = National Pollutant Discharge Elimination System
- SW = Storm Water

**Chart Number III**  
**Determining if your project qualifies for coverage**  
**SWRCB Order \_\_\_\_\_ - DWQ**

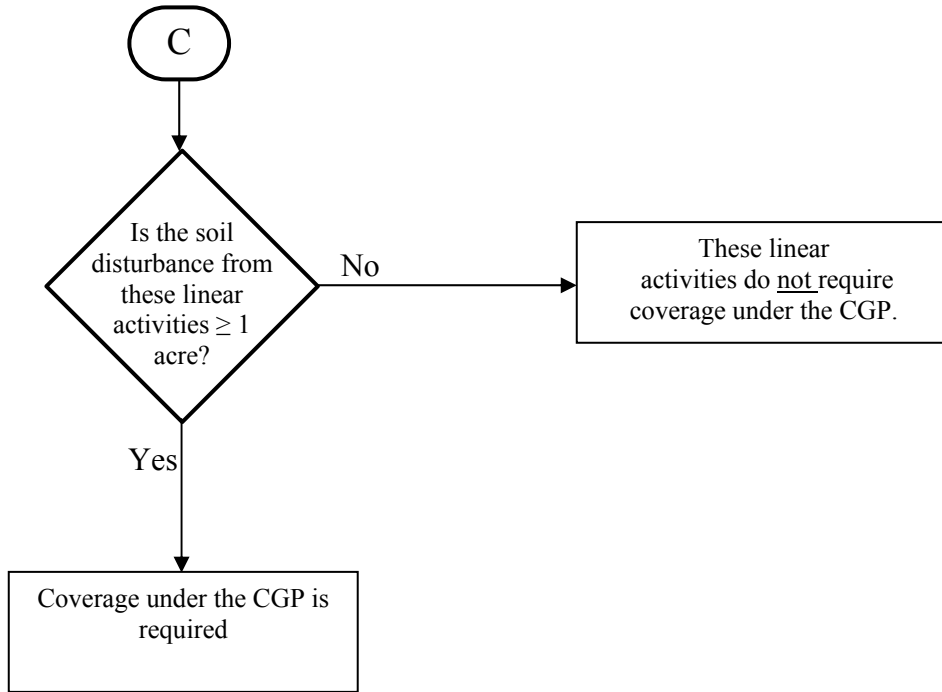


\* See Attachment No. 1 – Definition of Terms  
 \*\* Note: The “developer” is associated with the New Development Project or Redevelopment Project\* and the CGP is the Construction General Permit issued by the State Water Board.

CGP = Construction General Permit  
 LUP = Linear Underground/Overhead Project  
 NPDES = National Pollutant Discharge Elimination System  
 SD = Soil Disturbance  
 SW = Storm Water

Chart Number IV  
Determining if your project qualifies for coverage  
SWRCB Order \_\_\_\_\_ - DWQ

Linear Only Projects  
and  
Relocations Prior to New Development Projects or  
Redevelopment Projects\*



\* See Definition of Terms

CGP = Construction General Permit  
NPDES = National Pollutant Discharge Elimination System  
SW = Storm Water

LUP Flowcharts - Definition of Terms  
Determining if your project qualifies for coverage  
SWRCB Order \_\_\_\_\_ - DWQ

1. **Emergency Activities** – These are activities associated with responding to emergencies to protect public health and safety and restoration of public services after natural or manmade disasters.
2. **Linear Construction Activity** – Linear construction activity consists of underground/ overhead facilities that typically include, but are not limited to, any conveyance, pipe or pipeline for the transportation of any gaseous, liquid (including water, wastewater for domestic municipal services), liquescent, or slurry substance; any cable line or wire for the transmission of electrical energy; any cable line or wire for communications (e.g., telephone, telegraph, radio or television messages); and associated ancillary facilities. Construction activities associated with LUPs include, but are not limited to those activities necessary for the installation of underground and overhead linear facilities (e.g., conduits, substructures, pipelines, towers, poles, cables, wires, connectors, switching, regulating and transforming equipment and associated ancillary facilities) and include, but are not limited to, underground utility mark-out, potholing, concrete and asphalt cutting and removal, trenching, excavation, boring and drilling, access road and pole/ tower pad and cable/ wire pull station, substation construction, substructure installation, construction of tower footings and/or foundations, pole and tower installations, pipeline installations, welding, concrete and/or pavement repair or replacement, and stockpile/ borrow locations.
3. **Planning/ Designing Activities** – These are field activities associated with the planning and design of a project (e.g., activities associated with route selection). These could include, but are not limited to, potholing, sediment coring, and limited excavations to verify conflicts or contaminated soils.
4. **Pre-Development Activities** – These are construction activities associated with LUPs conducted by a discharger or its authorized representative to remove and/or relocate lines and facilities prior to the start of construction for new development and redevelopment projects that are owned or operated by third parties or municipal agencies. Soil disturbances from preconstruction projects are considered separately from the development or redevelopment projects for the purposes of determining if they meet minimum threshold requirements for areas of soil disturbance that would require coverage by a construction storm water permit.
5. **Redevelopment Projects** – Involve construction activities associated with LUPs constructed by the discharger to relocate lines or convert facilities from overhead to underground as a result of a redevelopment project owned or operated by a third party or municipal agency.
6. **Routine Maintenance Activities** – Activities associated with operations and maintenance activities that are conducted on existing lines and facilities and within existing right-of-ways, easements, franchise agreements, or other legally binding agreements of the discharger. Routine maintenance projects include, but are not limited to projects conducted to:
  - a. Maintain the original purpose of the facility or hydraulic capacity.
  - b. Update existing lines<sup>1</sup> and facilities to comply with applicable codes, standards, and regulations regardless if such projects result in increased capacity.
7. **Tie-in Activities** – Activities conducted immediately adjacent to “energized” or “pressurized” facilities by the discharger or their authorized representative and are not considered small construction activities where all other LUP construction activities associated with the tie-in are covered by an NOI and SWPPP of a third party or municipal agency.

---

<sup>1</sup> Update existing lines includes replacing existing lines with new materials or pipes.