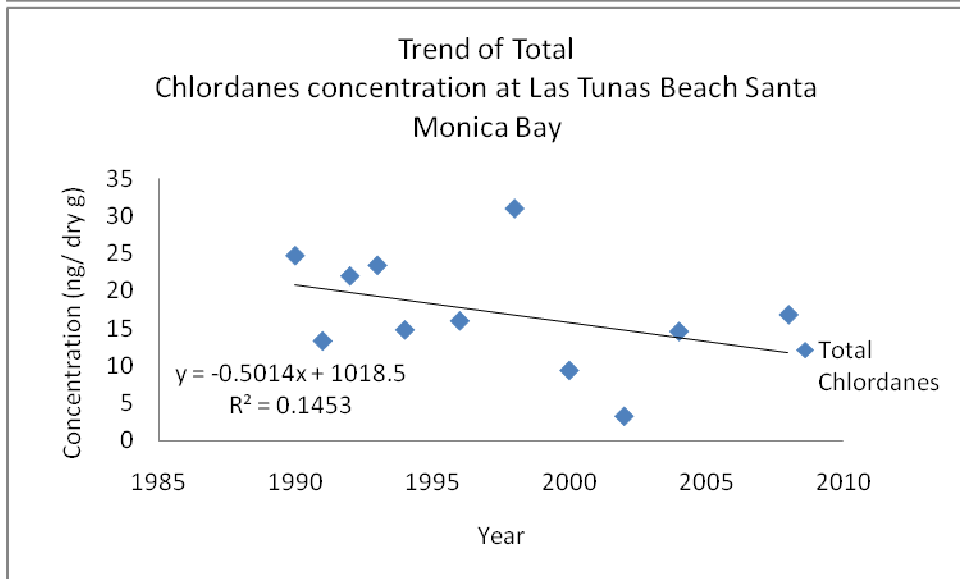
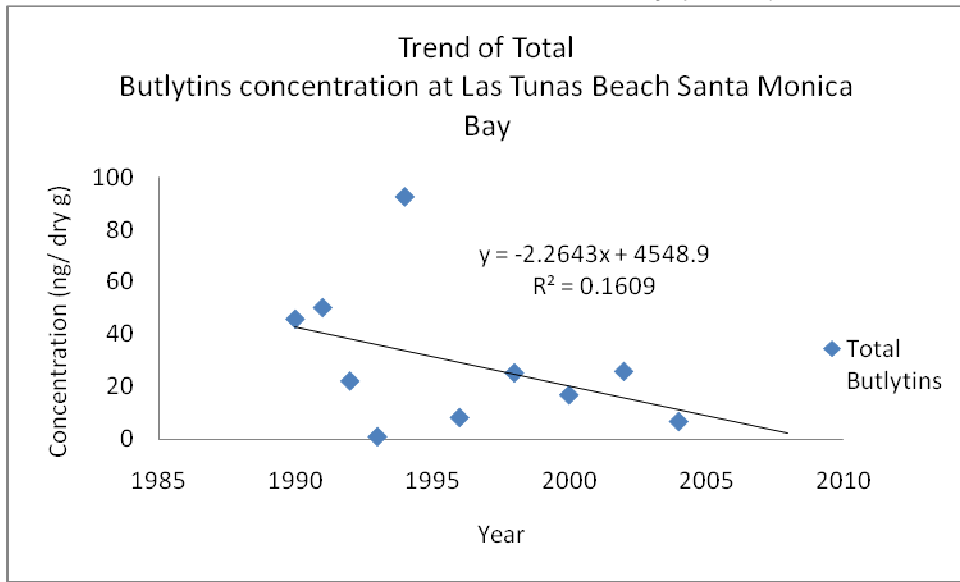
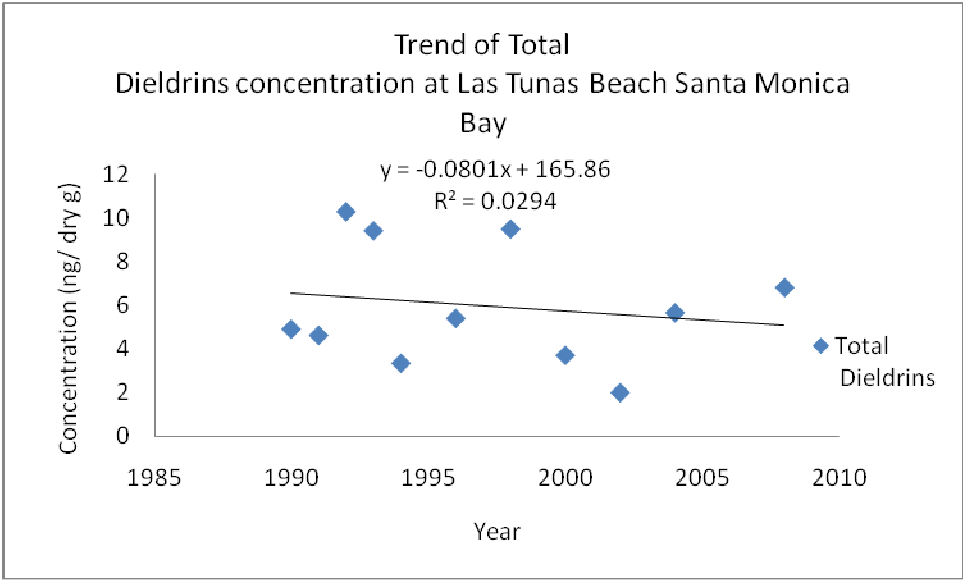
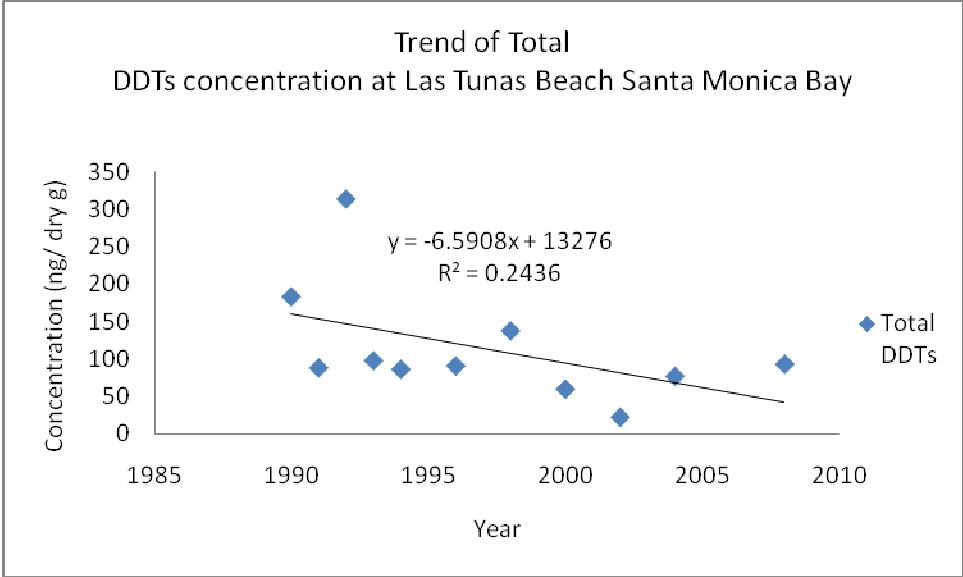


## Summary for Las Tunas Beach Santa Monica Bay (TBSM)

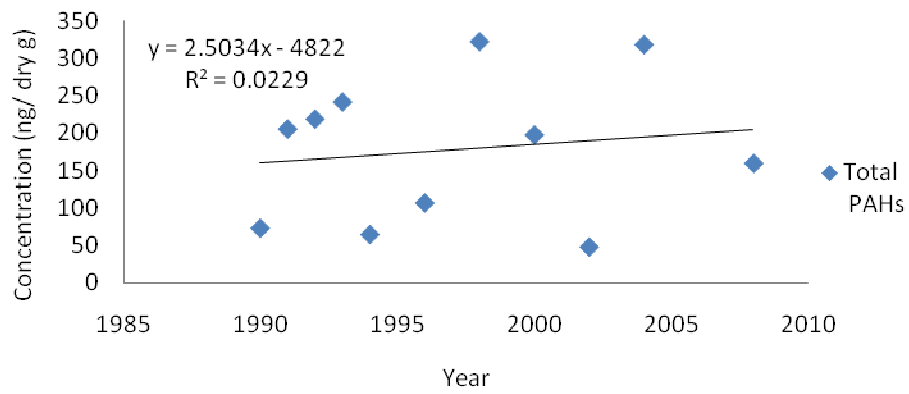
The following graphs show trends at Las Tunas Beach Santa Monica Bay from years 1986-2009 for the following constituents: Butyltin, Chlordane, Total DDT, Dieldrin, Total PAH, PCBs, Zinc (Zn), Silver (Ag), Aluminum (Al), Arsenic (As), Cadmium (Cd), Chromium (Cr), Copper (Cu), Iron (Fe), Mercury (Hg), Manganese (Mn), Nickel (Ni), Lead (Pb), Selenium (Se), Antimony (Sb), Silicon (Si) and Tin (Sn).

### Las Tunas Beach Santa Monica Bay (TBSM)

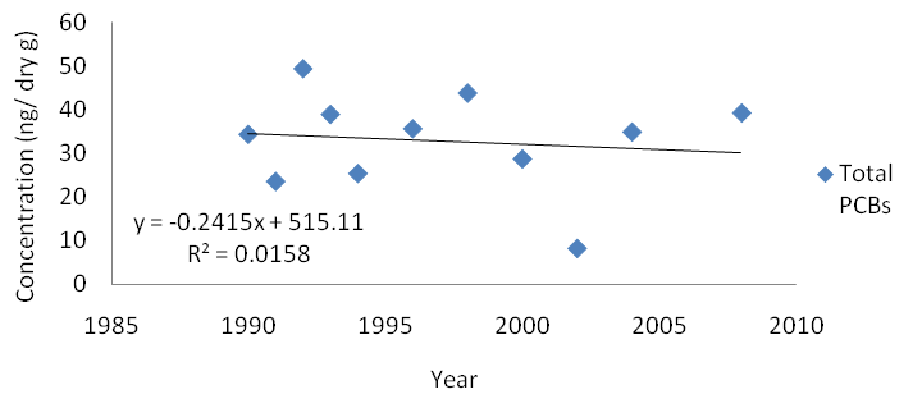




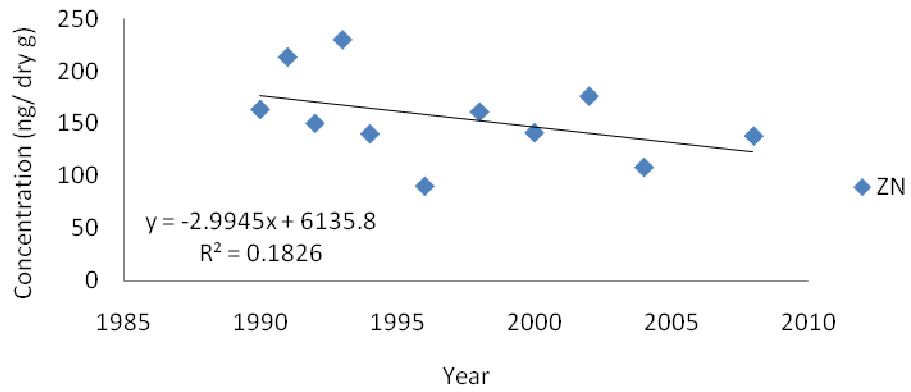
Trend of Total PAHs concentration at Las Tunas Beach Santa Monica Bay



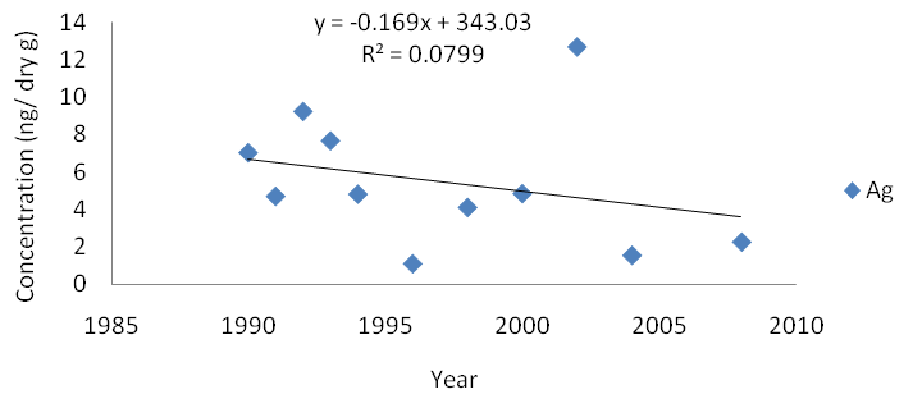
Trend of Total PCBs concentration at Las Tunas Beach Santa Monica Bay



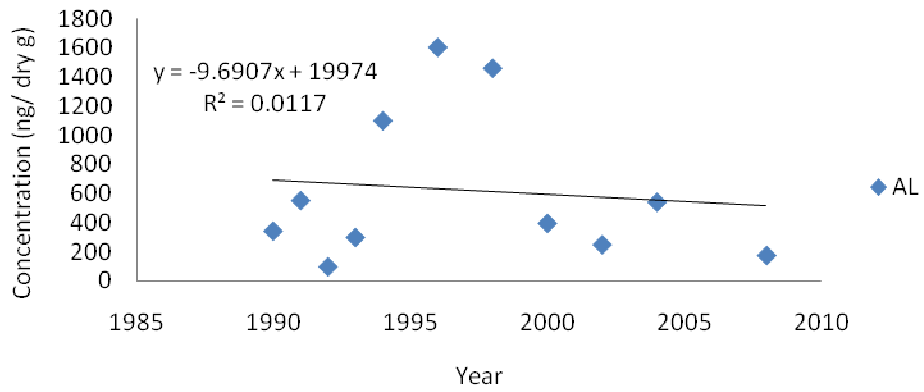
Trend of Total  
Zn concentration at Las Tunas Beach Santa Monica Bay



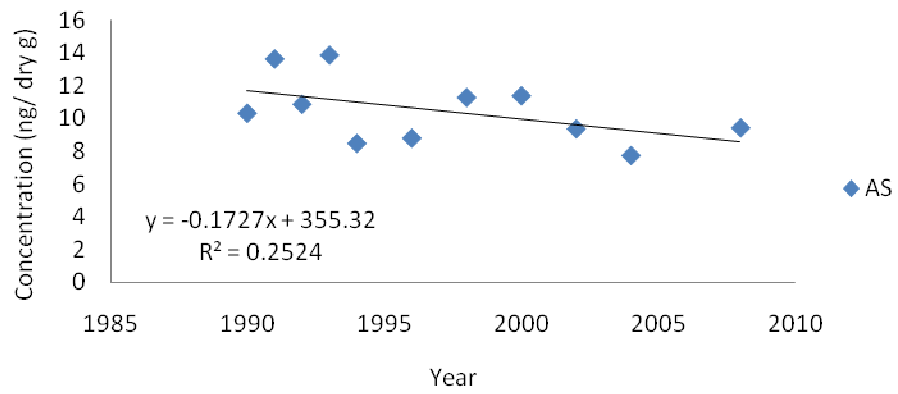
Trend of Ag concentration at Las Tunas Beach Santa  
Monica Bay



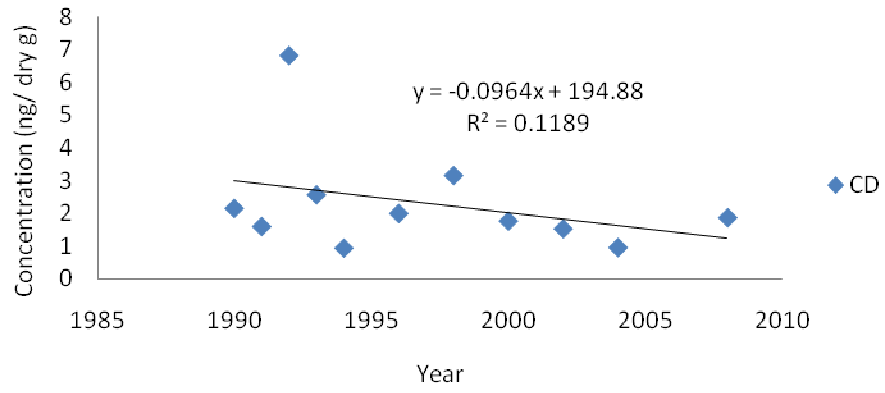
Trend of Al concentration at Las Tunas Beach Santa Monica Bay



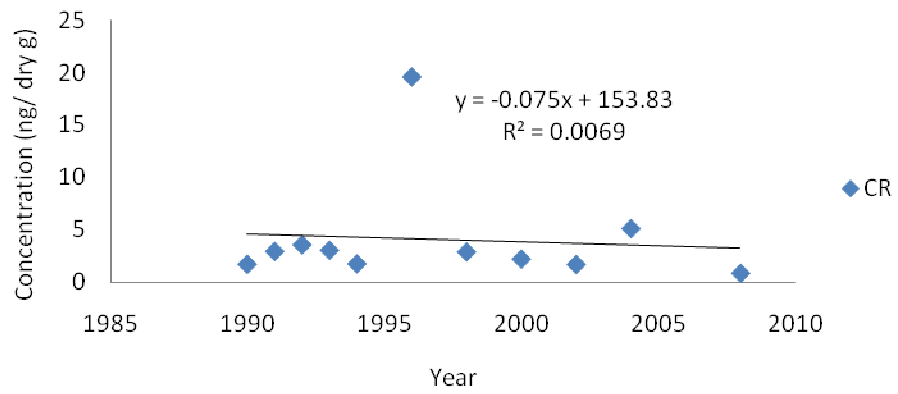
Trend of As concentration at Las Tunas Beach Santa Monica Bay



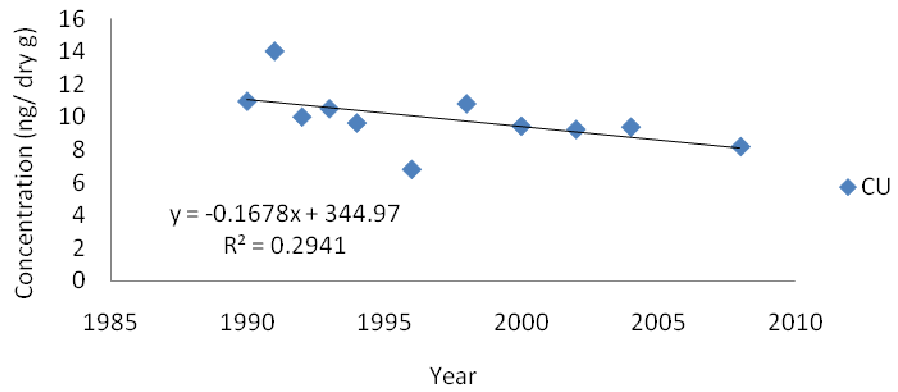
Trend of Cd concentration at Las Tunas Beach Santa Monica Bay



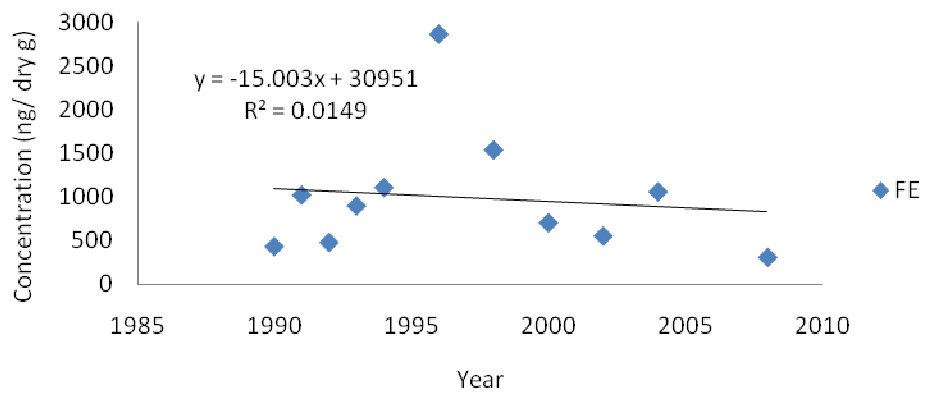
Trend of Cr concentration at Las Tunas Beach Santa Monica Bay



Trend of Cu concentration at Las Tunas Beach Santa Monica Bay

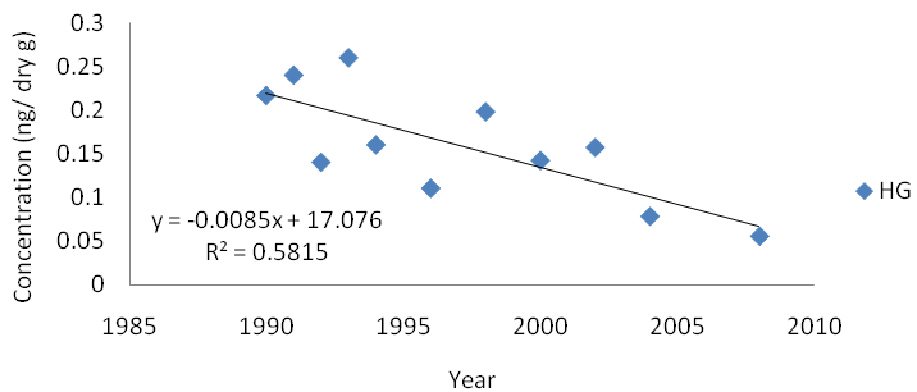


Trend of Fe concentration at Las Tunas Beach Santa Monica Bay

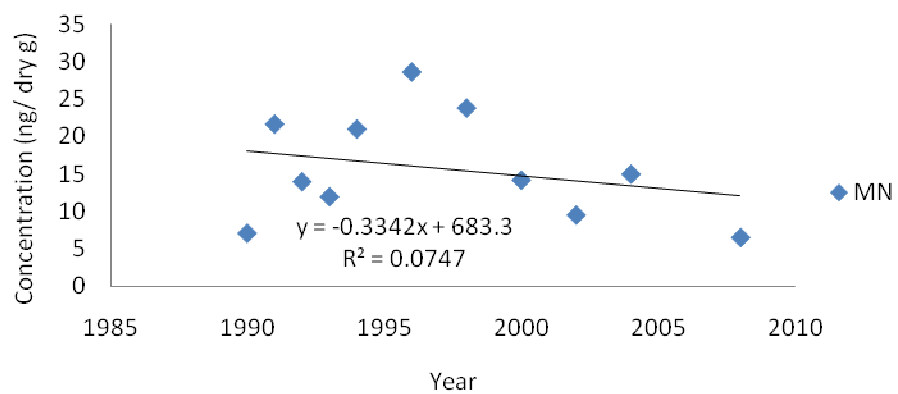




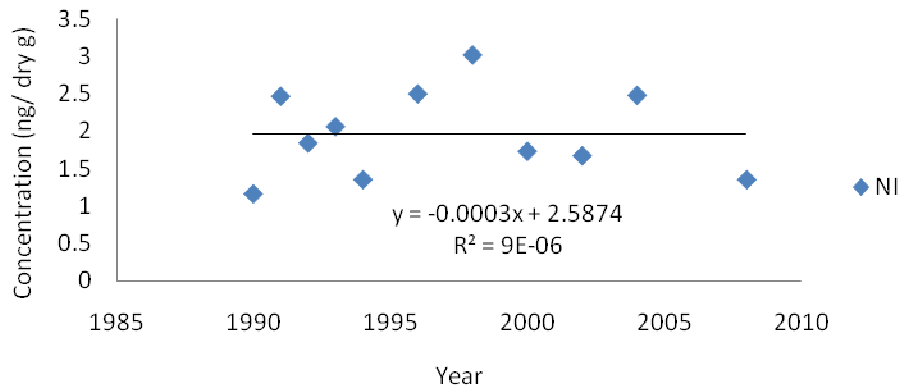
Trend of Hg concentration at Las Tunas Beach Santa Monica Bay



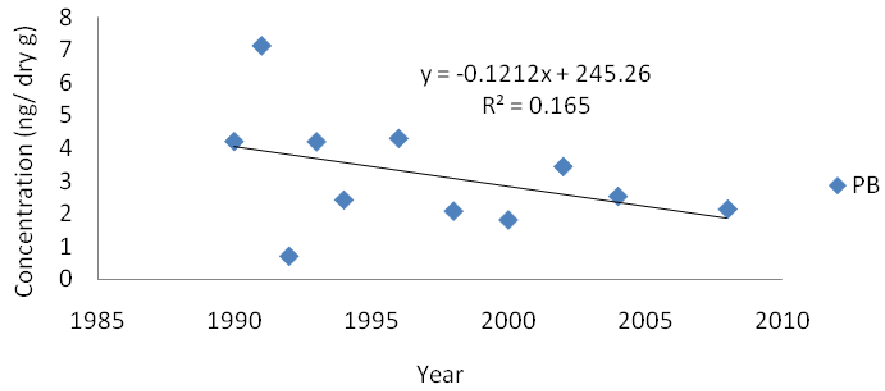
Trend of Mn concentration at Las Tunas Beach Santa Monica Bay

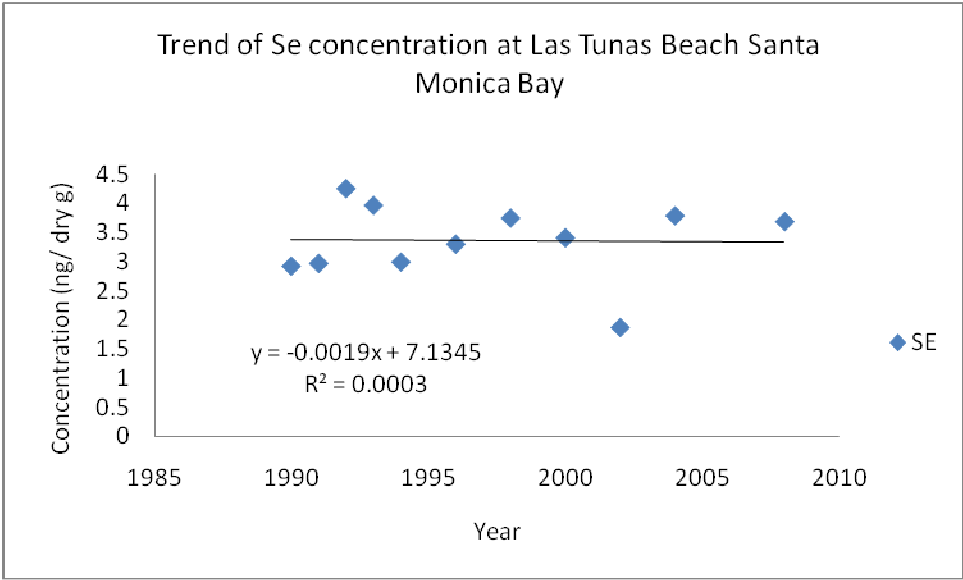
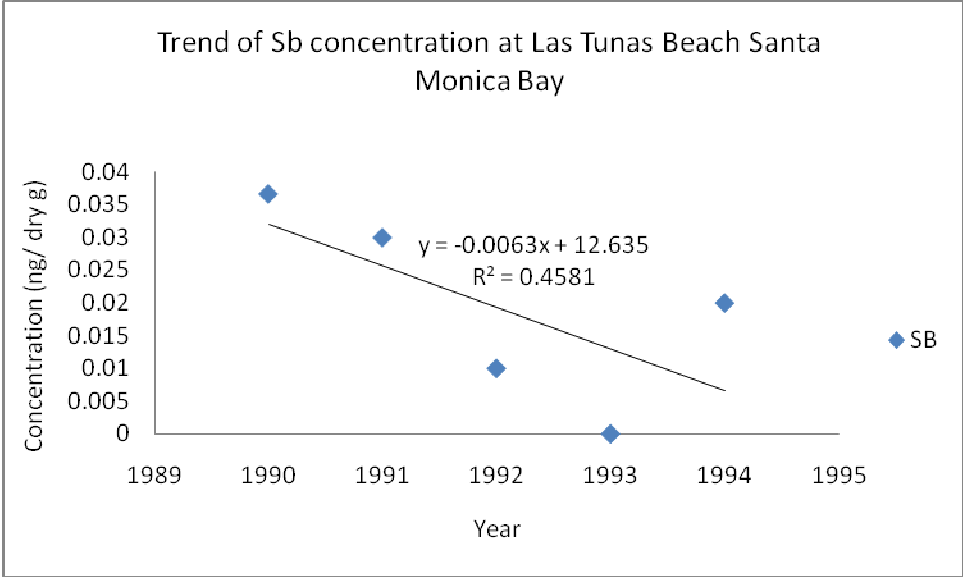


Trend of Ni concentration at Las Tunas Beach Santa Monica Bay

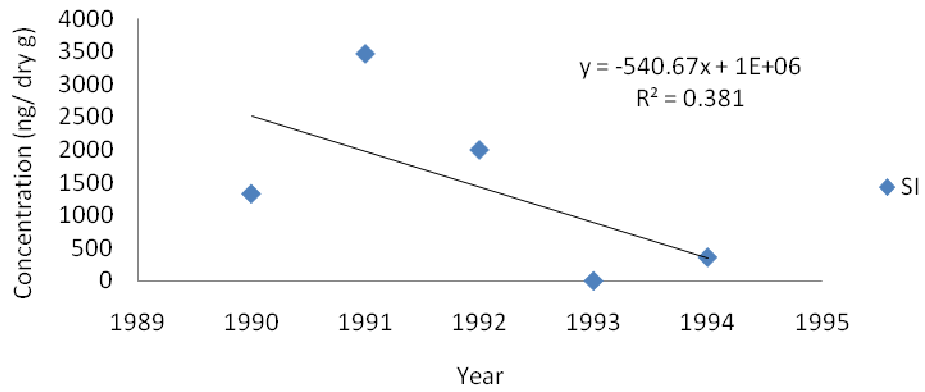


Trend of Pb concentration at Las Tunas Beach Santa Monica Bay





Trend of Si concentration at Las Tunas Beach Santa Monica Bay



Trend of Sn concentration at Las Tunas Beach Santa Monica Bay

