

Gabilan Creek Watershed Turbidity TMDL Project Location and Area Maps

Project Location

The Gabilan Creek watershed is in the northern portion of the Salinas River watershed in the central coast of California.

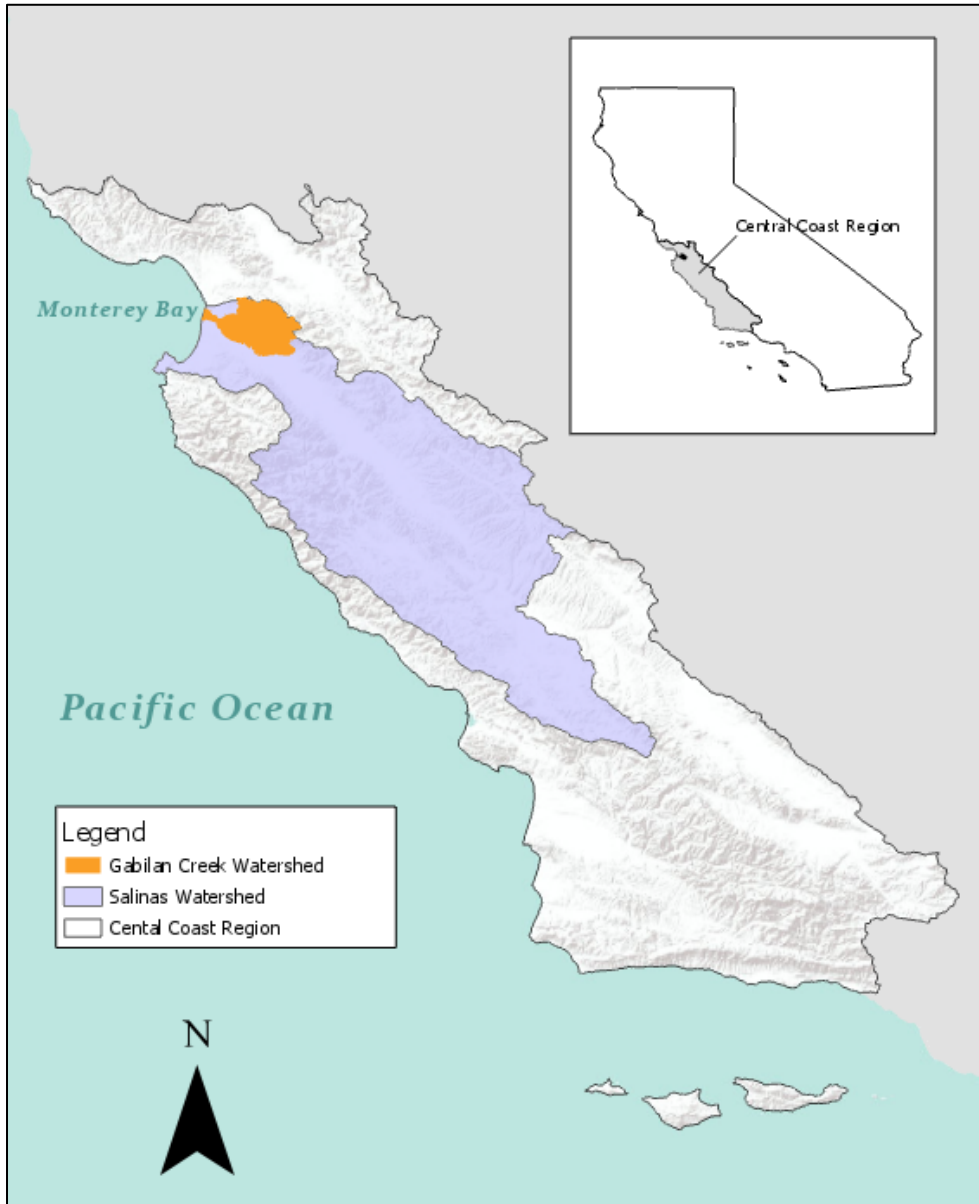


Figure 1. Location map of the Salinas watershed and the project location, the Gabilan Creek watershed.

Project Area

The TMDL project area is the 160 square mile Gabilan Creek watershed, which extends from the southwestern slope of the Gabilan Mountains west to the Pacific Ocean. Gabilan Creek is the major stream in the watershed that flows out of the Gabilan Mountains into an alluvial coastal valley. Gabilan Creek is the first of a series of interconnected waterbodies including the Salinas Reclamation Canal, Tembladero Slough, and Old Salinas River. The Old Salinas River outlets into Moss Landing Harbor and the Pacific Ocean.

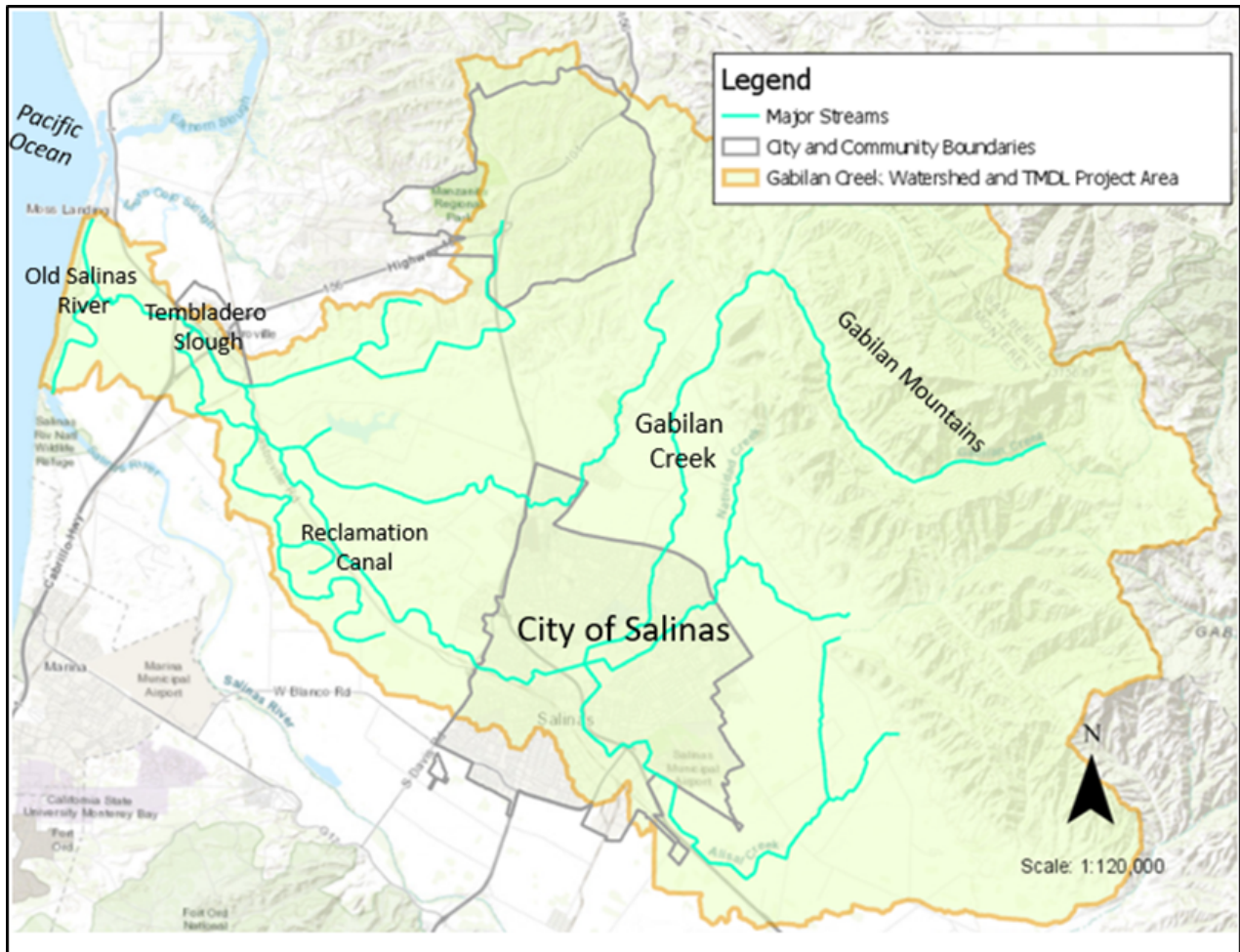


Figure 2. Map of the project area and major streams in the Gabilan Creek watershed.