

***California Science Advisory Panel
recommendations for CEC monitoring
in receiving waters.***

Daniel Schlenk

**Department of Environmental Sciences
University of California, Riverside**



PANEL MEMBERS

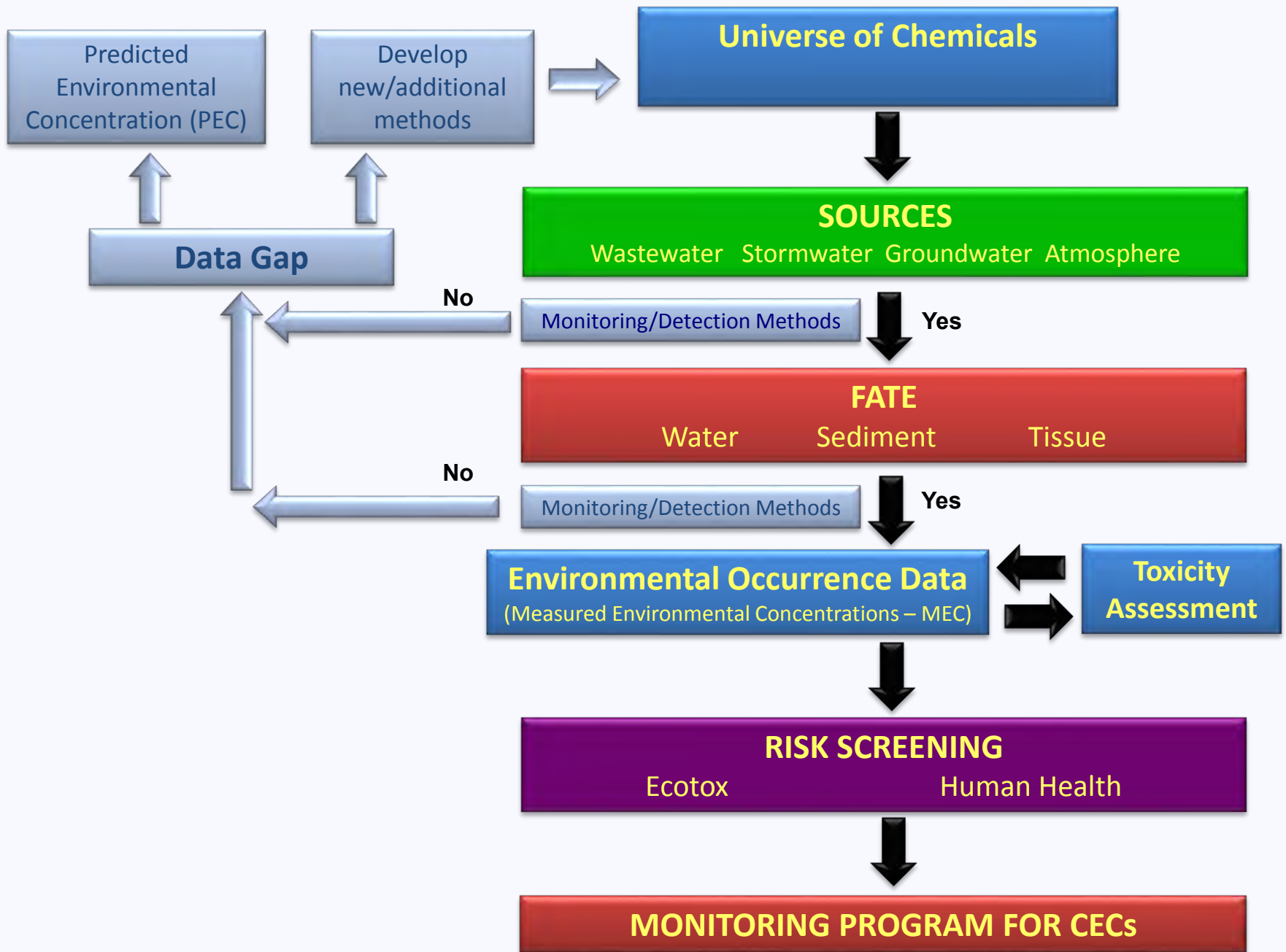
- **Dr. Paul Anderson**
 - Human Health Toxicologist
 - Arcadis US
- **Dr. Nancy Denslow**
 - Biochemist
 - University of Florida
- **Dr. Jörg Drewes**
 - Civil Engineer
 - Colorado School of Mines
- **Dr. Adam Olivieri**
 - Risk Assessor
 - EOA Incorporated
- **Dr. Daniel Schlenk (Chair)**
 - Environmental Toxicologist
 - UC Riverside
- **Dr. Shane Snyder**
 - Analytical Chemist
 - University of Arizona
- **Dr. Geoff Scott**
 - Marine Resources
 - NOAA

HOW DO WE MONITOR FOR CECs?

- **What are the relative contributions from stormwater & WWTP effluent?**
- **What are the appropriate CECs to be monitored, including analytical methods and detection limits?**
- **What is the fate of CECs in WWTPs, storm & receiving waters?**
- **What approaches should be used to assess biological effects?**
- **What is the appropriate monitoring design?**
- **What levels of CECs should trigger additional action? What range of actions should be considered?**

PANEL DELIVERED FOUR PRODUCTS

- **Decision making “risk-based” framework**
 - A tool to prioritize CECs now and into the future
- **Application of framework to discharge scenarios of interest**
 - Initial list of CECs to monitor in water, sediment, biota
- **Monitoring recommendations and interpretation**
 - How, where and when to monitor; how to respond to results
 - A process that can *adapt* to changing science & chemical use
- **Future recommended activities**
 - Develop better monitoring tools to improve & refine the process



RISK-BASED SCREENING FRAMEWORK

- **Step 1: measure or predict occurrence (MEC or PEC)**
 - Provided through investigative monitoring (e.g. regional, special studies)
- **Step 2: determine concentration that is protective of resource (aka “monitoring trigger level” or MTL)**
 - Published information on no/low observable effects concentrations
- **Step 3: calculate “Monitoring Trigger Quotient” (MTQ)**
= MEC (or PEC) / MTL
 - If $MTQ < 1$, no concern
 - If $MTQ \geq 1$, add to candidate list

DISCHARGE SCENARIOS

- ***Effluent dominated inland waterway***
 - Low flow (dry weather) conditions
 - No dilution of WWTP effluent
- ***Coastal embayment***
 - WWTP effluent and stormwater discharge
 - 10 fold dilution of source input
- ***Offshore ocean discharge***
 - Large WWTP outfalls in deeper water
 - 100 fold dilution of WWTP effluent

MEC/PEC--EXPOSURE

- **WWTP effluent**
 - CEC Recycled Water Panel for WWTP effluents
- **Surface water/Sediments/Tissues**
 - Within the State of California
 - Within the United States
 - (Lowest relevance) from countries outside US
 - No occurrence
- **1-Box Model for Fate (eg PBDE 47, 99)**

DATA SOURCES FOR EXPOSURE

- **Ca. Recycled Water report** (Anderson et al. 2010)
- **WERF report** (Diamond et al. 2011)
- **HPV-PBT** (Howard & Muir 2010; 2011)
- **Literature** (Kumar & Xagorarakis 2010)

MTL--EFFECTS

- **Receptors of Interest**
 - Microbial, Non-microbial Invertebrate, Fish, Bird, Mammals
- **“When available” --NOEC/PNEC**
 - (Reproduction, Growth, Survival)**
 - EPA EcoTox website (WERF report; Diamond et al. 2011)
 - MistraWikiPharma database
 - Literature
 - Pubmed
 - Scifinder Scholar
 - Web of Science
- **Uncertainty Factors (10 X)**
 - Acute to chronic (if NOEC was not available)
 - Freshwater to Saltwater
 - EDC mode of action
- **Antibiotics (MICs) x UFs**

CECs IN WATER*

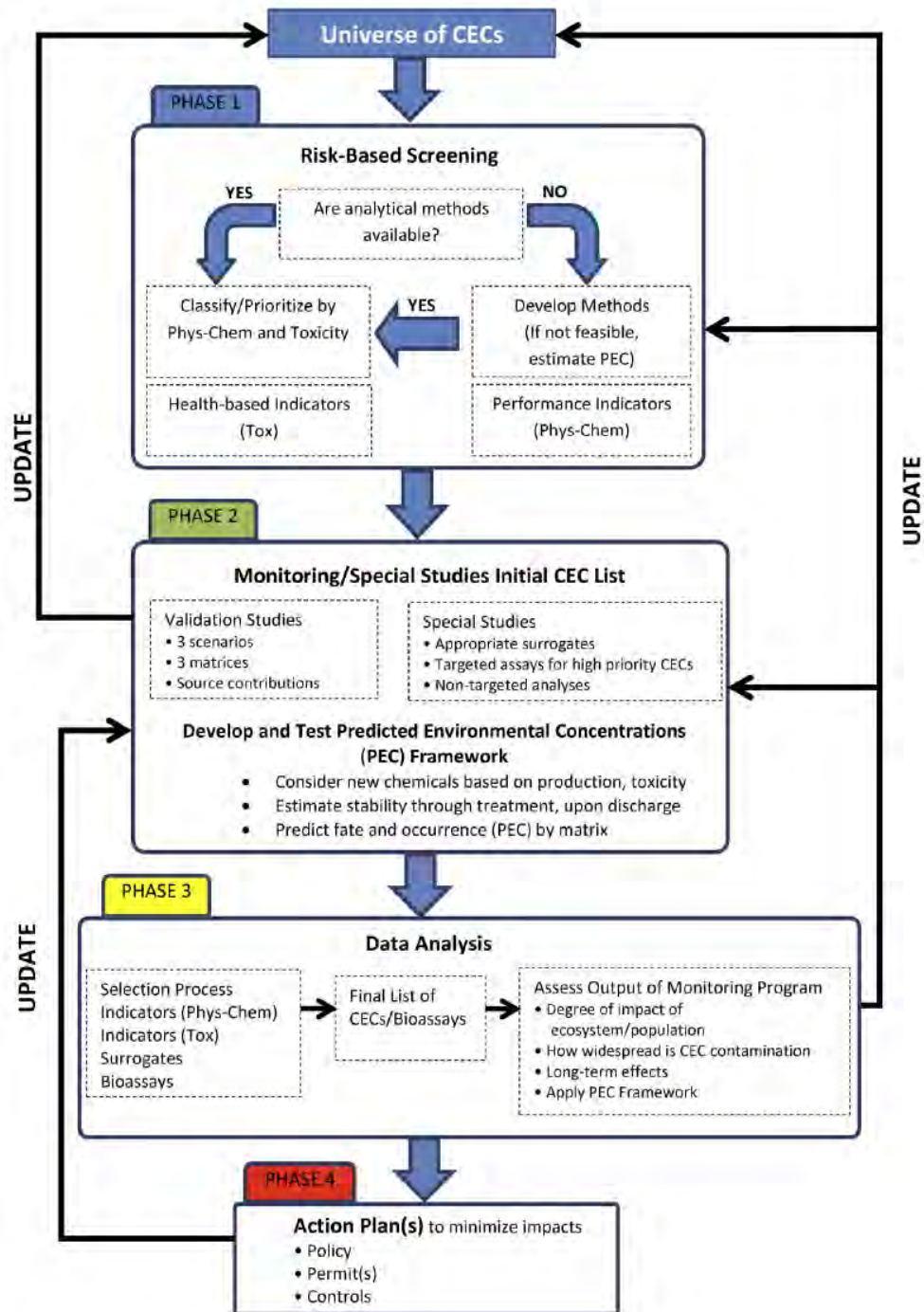
- **Pesticides**
 - bifenthrin, permethrin, chlorpyrifos
- **Consumer products**
 - bisphenol A, diclofenac, galaxolide, ibuprofen
- **Natural hormones**
 - 17 β -estradiol, estrone
- **Antibiotics**
 - triclosan (River scenario only)
- * River & Bay scenarios only

CECs IN SEDIMENT AND TISSUE

- **Sediments (Bay & Ocean scenarios)**
 - Plasticizers (bis-2-ethylhexyl, butylbenzyl phthalates)
 - Flame retardants (PBDE-47, -99)
 - Detergents (4-nonylphenol)
 - Pyrethroids (bifenthrin, permethrin) – Bays only
- **Biological tissue (All Scenarios)**
 - Polybrominated diphenyl ethers (PBDEs)
 - Perfluorinated chemicals (e.g. PFOS)

Table 8.2. Guidance for developing targeted/pilot CEC monitoring workplans. FW = fresh water; M = include in monitoring programs; NA = not applicable; RW = receiving water

General Monitoring Design Parameters	Large POTW Discharging to Ocean ^a	Small POTW Discharging to Embayment ^b	Stormwater (MS4) Discharge -- Receiving Water Stations ^c	POTW Discharging to Effluent Dominated Waterway ^d
Parameter List	Table 8.1	Table 8.1	Table 8.1	Table 8.1
Spatial coverage – Receiving Water (RW)	2-D grid (up to 6 sites each location)	2-D gradient (up to 6 sites in estuary)	1-D gradient (up to 6 sites for each location)	1-D (up to 6 sites for each location)
Number of POTW and/or FW Locations	Two POTWs and corresponding RWs	Five POTWs in one estuary/embayment	Two large FW streams and the Delta	One POTW and RW
Frequency	Semi-annual over three years	Semi-annual over three years	Wet and Dry Season over three years	Wet and Dry Season over three years
Background	M	M	M	M
Aqueous (non-filtered)	NA	M	M	M
Sediment (top 5 cm)	M	M	M	M
Tissue ^e	M	M	M	M
Bioanalytical Screening Assays ^f	Pilot evaluation and validation studies	Pilot evaluation and validation studies	Pilot evaluation and validation studies	Pilot evaluation and validation studies
Toxicity ^g	Pilot screening study at one POTW	Pilot screening study at one POTW	NA	Pilot screening study at POTW
Antibiotic Resistance ^h	NA	Pilot investigation at one POTW	NA	Pilot investigation at one POTW
Passive Sampling Devices (PSDs) ⁱ	Pilot investigation at one POTW	NA	NA	Pilot investigation at one POTW



ADAPTIVE MONITORING STRATEGY INCLUDES “OFF-RAMPS” ...

Monitoring Trigger
Quotient (MTQ)

High concern – control (all controllable) sources

Elevated concern – confirm levels; expand monitoring; refine risk assessment; control (easy) sources

Moderate concern – continue monitoring to ensure concentrations not increasing

Little/No concern – discontinue monitoring

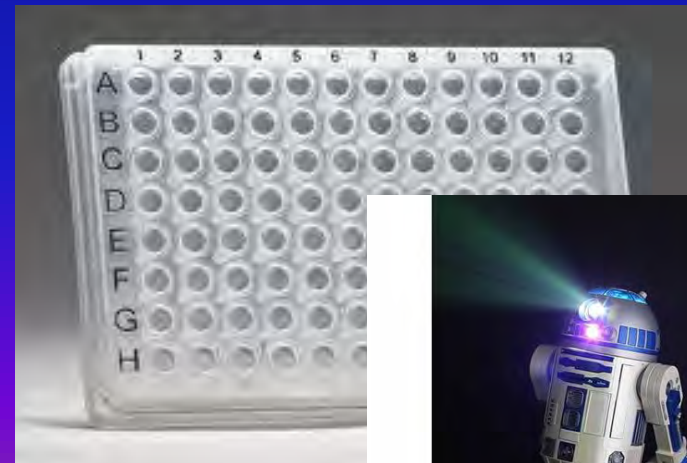
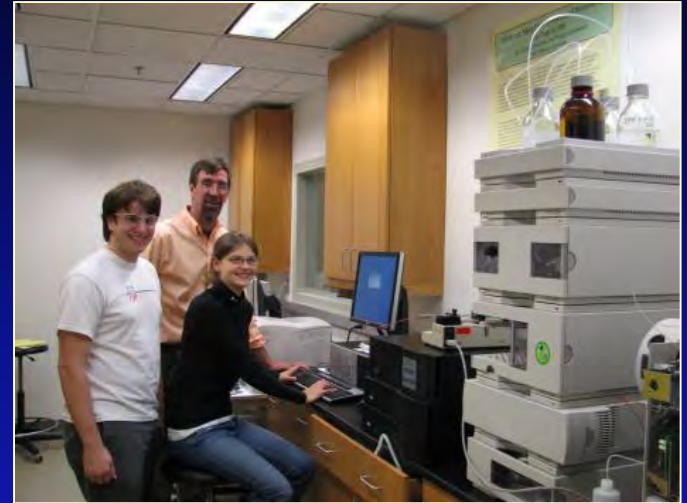
- **Assess the risks associated with CECs relative to currently monitored constituents**
 - Make efficient use of finite monitoring resources

...AND “ON-RAMPS”

- **Panel recommended investigative monitoring and special studies for “data poor” CECs**
 - Newly developed and/or registered drugs, pesticides and flame retardants
- **Panel recommended development of modeling tools to pre-screen for problematic CECs**
 - Consider production, usage, fate and potential for toxicity
- **Use Panel’s assessment framework to determine if CECs warrant inclusion in future monitoring (“On-Ramp”)**
- **Incorporate new information and revisit recommendations every 3-5 years**
 - Infuse the latest science and update CEC lists and tools

DEVELOP BIOLOGICAL SCREENING TOOLS

- **Targets impact to resources**
 - more relevant than simple exposure
 - different types of damage are targeted
- **Better performance, efficiency**
 - less time & money than status quo
 - works for priority pollutants & CECs
- ***In vitro* bioassays to screen for CECs by mode of action**
 - cell lines are commercially available
 - used for screening & selected monitoring elsewhere



Recommendation Updates

- **Fill data gaps on sources, fate, occurrence and effects**
 - CUPs (fipronil, pyrethroids)
 - HHCB-Galaxolide EcoRisk Assessment--EPA
 - GR data indicating persistent activity (Immune apical effects?; TIE?)
 - PR agonists (Progestins) show potent masculinization (AR vs. PR)

- **Link Screening Bioassays with Toxicity (adverse effects)**
 - EPA Toxcast (Toxicology in 21st Century NRC) linkage with in vivo studies
 - EPA/OECD AOP/MOA strategies for risk assessment
 - Estuarine fish model (*Menidia* spp) to link apical population endpoints to cellular/histological endpoints (FHM-FSTRA EDSP Tier 1)

Statewide Chemicals of Emerging Concern (CECs) Pilot Monitoring Study

Keith Maruya

Southern California Coastal Water Research Project

**Kickoff Meeting
September 12, 2013**



MANAGEMENT NEEDS

- **What is the impact of discharged CECs on the beneficial uses of receiving waters?**
- **What CECs are appropriate for current/future monitoring in waters receiving WWTP effluent and stormwater discharge?**
- **What approaches and methods are most effective for monitoring of CECs?**

DISCHARGE SCENARIOS

- ***Effluent dominated inland waterway***
 - Low flow (dry weather) conditions
 - No dilution of WWTP effluent
- ***Coastal embayment***
 - WWTP effluent and stormwater discharge
 - 10 fold dilution of source input
- ***Offshore ocean discharge***
 - Large WWTP outfalls in deeper water
 - 100 fold dilution of WWTP effluent

PROJECT GOALS

- **Provide design and technical requirements for implementation of expert panel recommendations**
- **Targeted (chemical specific) monitoring**
 - What, in what, where, how and how low/precise?
- **Special studies to improve CEC monitoring**
 - Comprehensiveness, efficiency
 - Which endpoints, methods, matrices, and test species?
 - What additional supporting information is needed?
- **Identify and take advantage of leveraging opportunities**
 - Existing regional monitoring programs
 - Partnerships with academia, government on special studies

CECs FOR TARGETED MONITORING

Compound	Freshwater System Aqueous	Coastal Embayment Aqueous	WWTP Effluent	Freshwater stormwater Aqueous, Sediment	Coastal Embayment Sediment	Marine Sediment	All Scenarios Tissue
Bis(2-ethylhexyl) phthalate	NO	NO	YES-O	NO	NO	YES	NO
Bisphenol A	YES	YES	Y-E/F	YES	NO	NO	NO
Bifenthrin	YES	YES	Y-E/F	YES	YES	NO	NO
Butylbenzyl phthalate	NO	NO	Y-O	NO	NO	YES	NO
Permethrin	YES	YES	Y-E/F	YES	YES	NO	NO
Chlorpyrifos	YES	YES	Y-E/F	YES	NO	NO	NO
Estrone	YES	YES	Y-E/F	YES	NO	NO	NO
Ibuprofen	YES	NO	Y-F	YES	NO	NO	NO
17- β estradiol	YES	YES	Y-E/F	YES	NO	NO	NO
Galaxolide	YES	YES	Y-E/F	YES	NO	NO	NO
Diclofenac	YES	NO	Y-F	YES	NO	NO	NO
p-Nonylphenol	NO	NO	Y-O	NO	NO	YES	NO
PBDE-47 & -99	NO	NO	Y-E/F/O	YES	YES	YES	YES
PFOS	NO	NO	Y-E/F/O	YES	YES ^b	YES ^b	YES
Triclosan	YES	NO	Y-F	YES	NO	NO	NO

MONITORING QUESTIONS

(What CECs are appropriate for continued/future monitoring?)

- 1. What is the occurrence (frequency of detection, concentrations) of CECs identified by the expert panel in**
 - freshwaters receiving POTW effluent during low flow/dry season conditions?
 - coastal embayments that receive POTW effluent and stormwater discharge?
 - marine waters adjacent to large (> 100 mgd) POTW outfalls?
- 2. What is the direction and magnitude of change in CEC concentrations (in water, sediment and tissue) over a 5 year time period?**
- 3. Does the first cycle of statewide CEC monitoring data suggest continued monitoring? (i.e., are MTQs > 1?)**

MONITORING QUESTIONS (cont.)

(What are the major CEC sources to receiving waters?)

1. Which CECs are detected in receiving waters influenced by POTW outfalls, and which CECs are detectable in receiving waters that are influenced largely by stormwater discharge?
2. What happens to CECs in receiving waters? Do they degrade? Attach to particles/sediment? Accumulate in biota?
3. How quickly and/over what distance or dilution scenarios are discharged CECs attenuated?

TARGETED STUDY DESIGN PARAMETERS

- a. list of CEC analytes, preferred methods & desired reporting limits
- b. list of candidate waterbodies that represent exposure scenarios identified by the expert panel
- c. list of target media (e.g. water, sediment, biological tissue), and candidate species
- d. frequency, number, and location of sampling stations for each candidate waterbody
- e. QA/QC goals for measurement of CECs to be incorporated into the Project Quality Assurance Project Plan (QAPP)
- f. list of appropriate monitoring questions for each exposure scenario
- g. data analysis and assessment methods for each exposure scenario
- h. data management plan
- i. strategy to coordinate with existing monitoring programs

SPECIAL STUDIES

General Monitoring Design Parameters	WWTP Discharging to <i>Ocean</i>	WWTP Discharging to Coastal <i>Embayment</i>	<i>Stormwater</i> (MS4) Receiving Water Stations	WWTP Discharging to <i>Inland Freshwater</i> Waterway
Bioanalytical Screening Assays ^a	YES	YES	YES	YES
Toxicity ^b	YES	YES	NO	YES
Antibiotic Resistance ^c	NO	YES	NO	YES
Passive Sampling Devices (PSDs) ^d	YES	NO	NO	YES

MONITORING QUESTIONS (cont.)

What is the impact of CECs on receiving water ecosystems?

What methods are most effective for monitoring of CECs?

1. Can we utilize newly developed *bioanalytical tools* to screen for a wide variety of CECs by mode of biological action?
2. Do toxicity estimates from current NPDES testing methods provide adequate safety for CECs that have sublethal impacts on *endocrine, immune or reproductive endpoints*?
3. How do we effectively monitor for *antibiotic resistance (ABR)* and how do we link microbial assessment endpoints with antibiotic-specific occurrence?

SPECIAL STUDY DESIGN PARAMETERS

1. list of target parameters, preferred methods and desired measurement goals
2. list of candidate waterbody(ies) for each special study
3. list of target media (e.g. water, sediment, biological tissue), and candidate target species
4. the frequency, number and location of sampling stations to be evaluated within each candidate waterbody
5. QA/QC goals for measurement of specified parameters to be incorporated into the QAPP
6. the rationale for exclusion/inclusion of studies that differ from the Science Advisory Panel's final recommendations.

PARTICIPANTS

- **Contractor (SCCWRP)**
 - Facilitator for CEC expert panels (recycled water; aquatic ecosystems)
- **Technical Advisory Committee**
 - Original members of expert panel for Aquatic Ecosystems
- **Stakeholder Advisory Committee**
 - Regulators, dischargers, public interest and regional monitoring experts
- **Interested public**

SCCWRP TEAM

- **Dr. Keith Maruya – Proj. Mgr.**
 - Dept Head, Chemistry
 - Lead facilitator, CEC panel
- **Dr. Nathan Dodder – Targeted Monitoring Lead**
 - Environmental Chemist
 - Bight'13 Chemistry Coordinator
- **Dr. Alvina Mehinto – Special Studies Lead**
 - Ecotoxicologist
 - Linkage of molecular responses & higher order effects

TECHNICAL ADVISORS

- **Dr. Paul Anderson**
 - Human Health Toxicologist
 - Arcadis US
- **Dr. Nancy Denslow**
 - Biochemist
 - University of Florida
- **Dr. Jörg Drewes**
 - Civil Engineer
 - TU Munich
- **Dr. Adam Olivieri**
 - Risk Assessor
 - EOA Incorporated
- **Dr. Daniel Schlenk (Chair)**
 - Environmental Toxicologist
 - UC Riverside
- **Dr. Shane Snyder**
 - Analytical Chemist
 - University of Arizona
- **Dr. Geoff Scott**
 - Marine Resources
 - NOAA

STAKEHOLDER ADVISORS

- **Philip Friess (CASA, Tri-TAC)**
- **Geoff Brosseau (CA Stormwater Quality Association)**
- **Sara Aminzadeh (CA Coastkeeper Alliance)**

- **Rich Breuer (SWRCB, SWAMP)**
- **Thomas Mumley (San Francisco Bay RWQCB)**
- **Deborah Smith (Los Angeles RWQCB)**

- **Jay Davis (SF Bay Regional Monitoring Program)**
- **Kenneth Landau (Delta Regional Monitoring Program)**

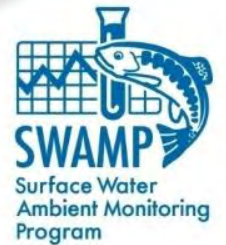
- **Richard Gossett (Commercial Services)**

DELIVERABLES & SCHEDULE

- **Targeted Monitoring Design Requirements** **Apr 2014**
- **Special Study Design requirements** **July 2014**
- **Quality Assurance Project Plan** **July 2014**
- **Statewide CEC Monitoring Workshop** **Fall 2014**
- **Project End (Final Report)** **Jan 2015**

- * **Mid-term & final SAC/TAC meetings** **Spr, Fall 2014**

Surface Water Ambient Monitoring Program (SWAMP)



Mission

To provide resource managers, decision makers, and the public with timely, high quality information to evaluate the condition of surface waters throughout California.



Background

- The State Legislature created SWAMP in 2000 to develop a comprehensive monitoring program to assess beneficial use attainment in all of the State's waterbodies.



<p>External Coordination</p> <ul style="list-style-type: none"> Water Quality Monitoring Council Monitoring Projects & Data Comparability at Multiple Scales 	<p>Regional Monitoring Partnerships</p> <ul style="list-style-type: none"> Partner and leverage resources to foster multi-cooperator, regional assessments 	<p>Internal Water Board Program Coordination</p> <ul style="list-style-type: none"> Stormwater & Wastewater Permitees Total Maximum Daily Load Non-point Source Wetlands
---	--	---

Coordination

<p>Statewide</p> <ul style="list-style-type: none"> Perennial Streams Assessment Bioaccumulation Monitoring Program Stream Pollution Trends 	<p>Regional</p> <ul style="list-style-type: none"> Regional Water Board SWAMP Monitoring Programs
---	---

Monitoring, Assessment, & Reporting

<p>Quality Assurance (QA) Program</p> <ul style="list-style-type: none"> QA Program Plan QA Plan Templates QA Advisor 	<p>Data Management Program</p> <ul style="list-style-type: none"> SWAMP Database CEDEN Data Templates (field & lab) 	<p>Methods</p> <ul style="list-style-type: none"> Field & Lab Indicators & Thresholds 	<p>Program Templates</p> <ul style="list-style-type: none"> Standard Language for Permits, Contracts, Orders 	<p>Assessment Framework</p> <ul style="list-style-type: none"> Guidance for developing question-driven monitoring programs
---	--	---	--	--

Infrastructure & Tools



Monitoring, Assessment & Reporting

Statewide Programs

- Bioaccumulation Monitoring Program (BOG)
- Bioassessment Monitoring Programs
- Stream Pollution Trends Monitoring Program (SPoT)

Regional Programs

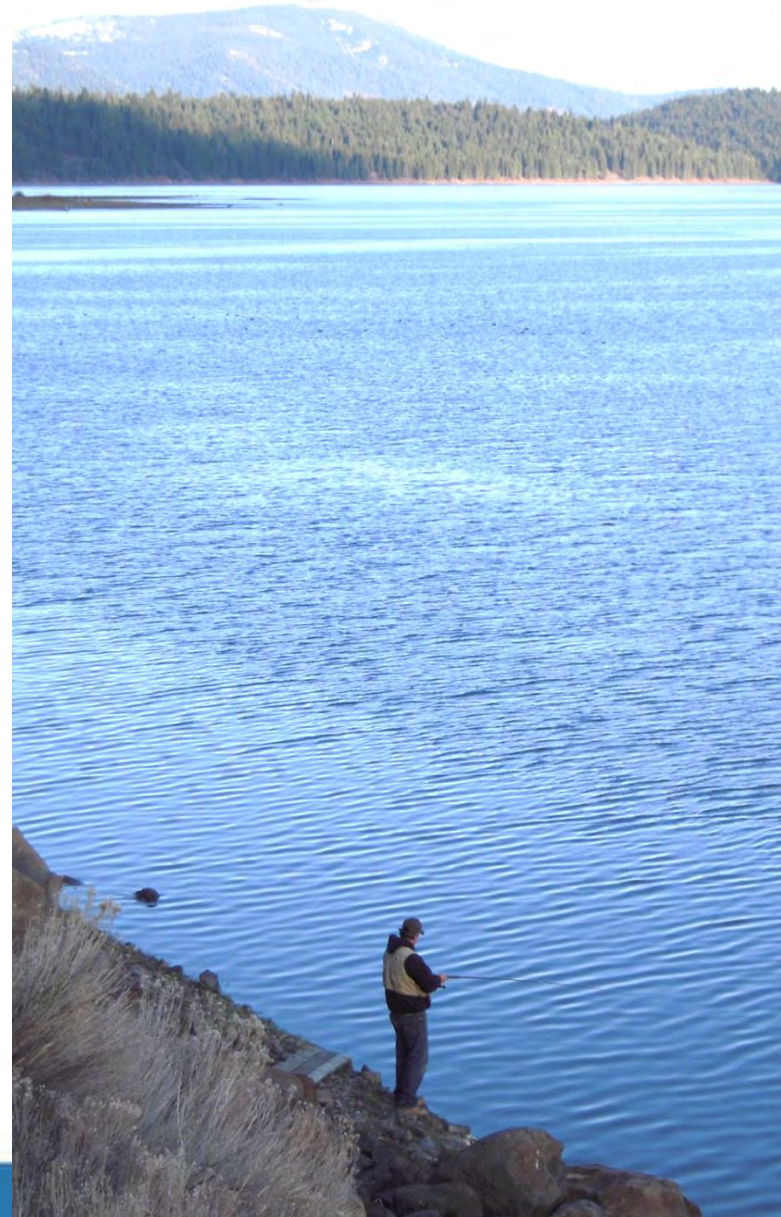
- Question-driven monitoring at the Regional scale

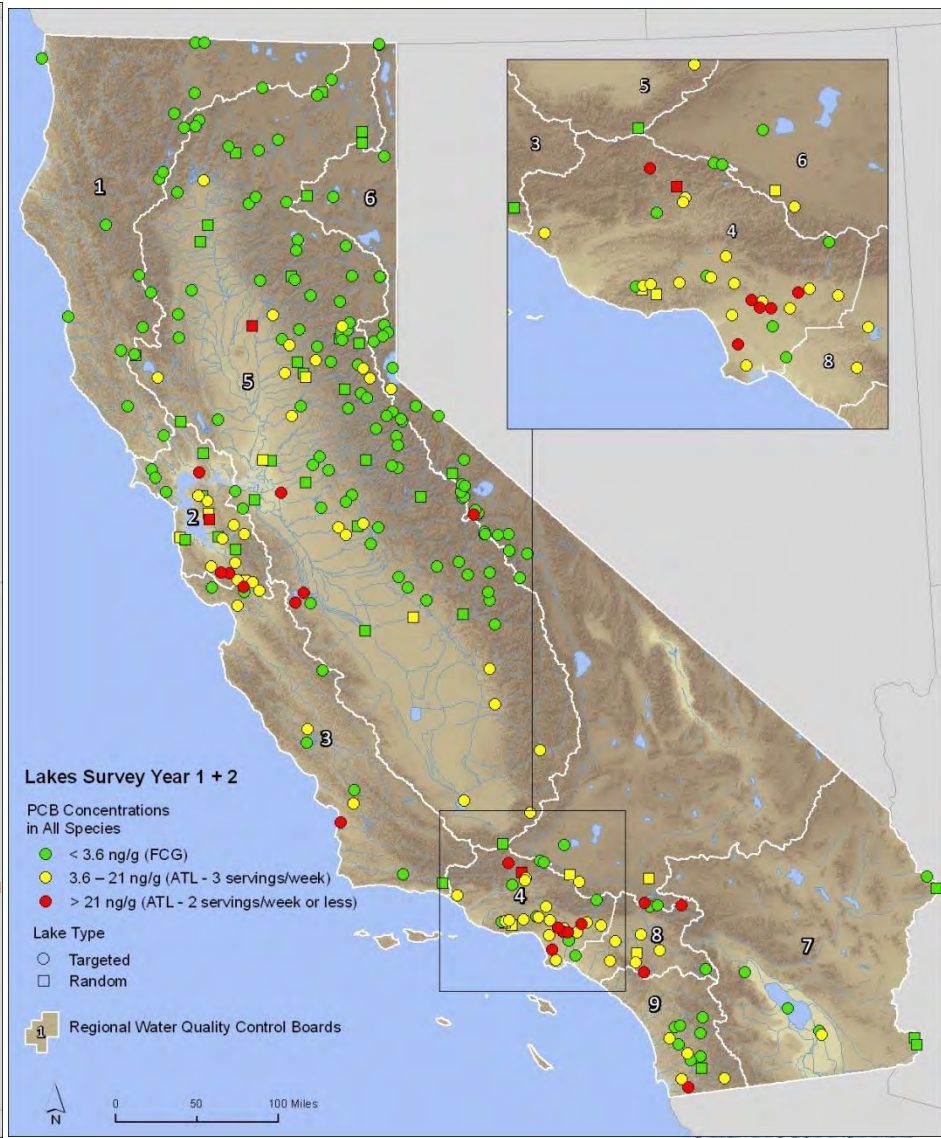
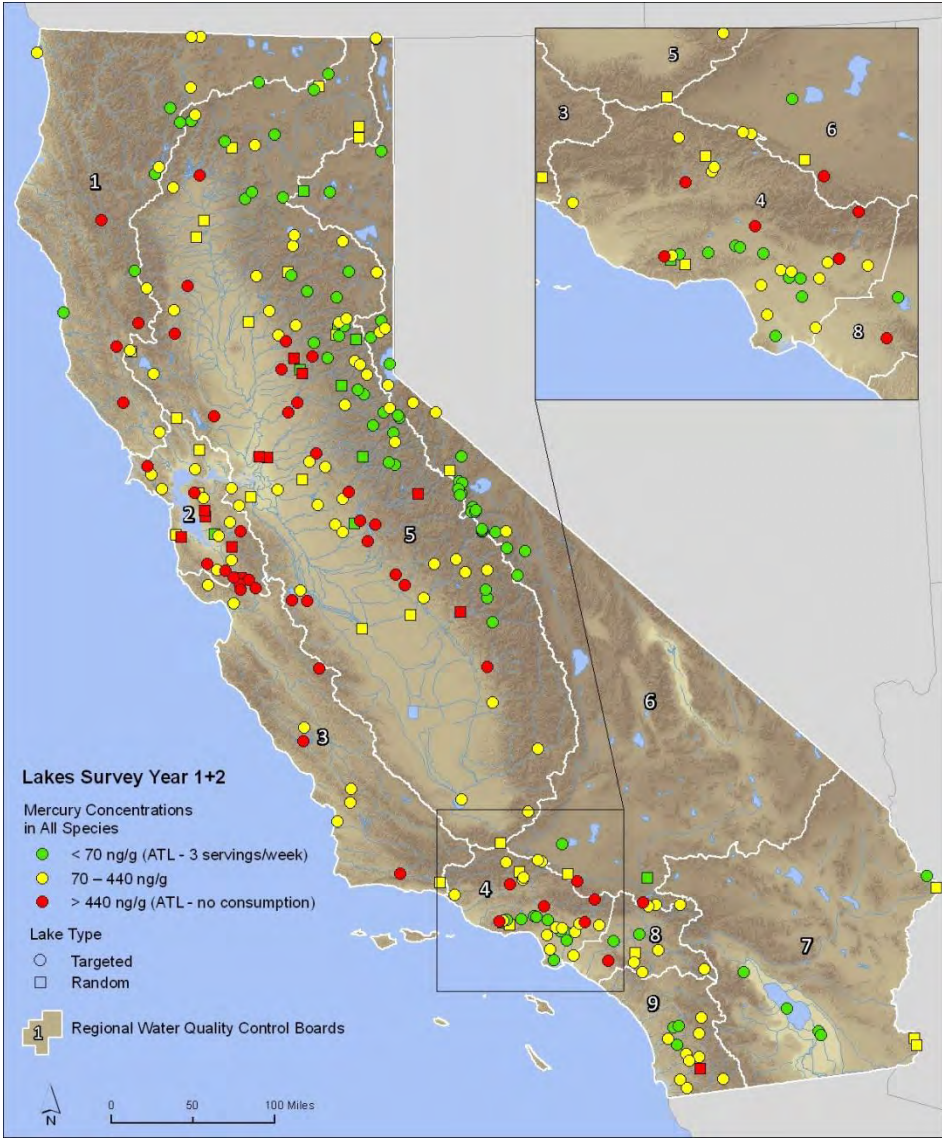


Fishable – Large Rivers, Lakes, Coastal Waters

Bioaccumulation Monitoring Program

- What is the status of contamination in sportfish from lakes, coastal waters, and large rivers?





SPoT Monitoring Questions

- What are concentrations of pollutants in streams sediments?
- Are sediments in streambeds toxic and what is the magnitude of toxicity?
- What is the contribution of land uses to pollutant concentrations and toxicity in the watershed?
- What is the magnitude of change in pollutant concentrations and toxicity?



SPoT Goals

1. Determine long-term trends in stream pollutants concentration and effects at the bottom of large watersheds statewide
2. Relate water quality indicators to land-use characteristics and management efforts
3. Establish a network of sites throughout the state to serve as a backbone for collaboration with local, regional, and federal monitoring



Legend

- Reference Sites
- SPoT sites

Land Cover



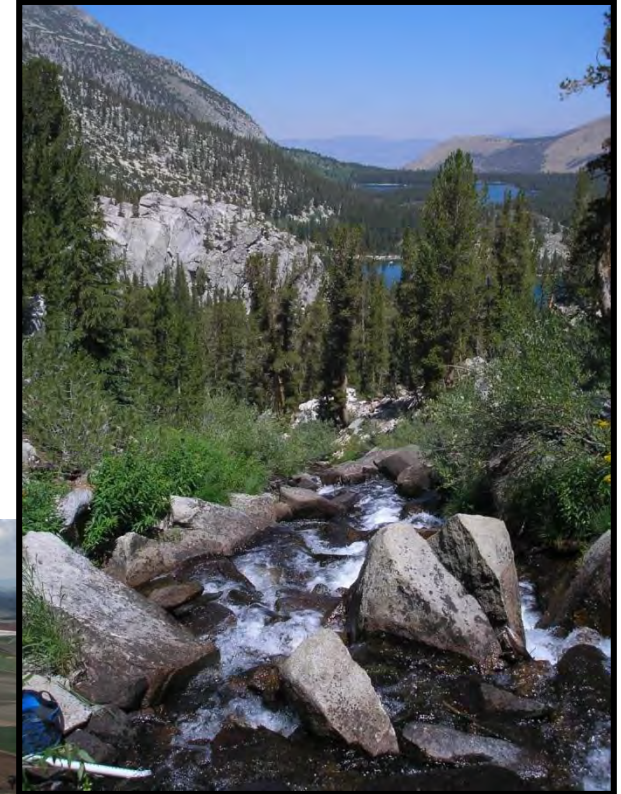
SPoT Indicators & Measurements

- Toxicity – 10-day growth & survival test, the standard amphipod *H. azteca*
- Pyrethroid pesticides at all sites
- Microcystin at all sites
- DDTs, PAHs, PCBs at all sites
- PBDEs at 42 urban sites
- Fipronil at 42 urban sites
- Metals (Ag, Al, As, Cd, Cr, Cu, Hg, Mn, Ni, Pb, Zn at all sites
- Additional CEC's under consideration
 - Neonicotinoid pesticides (e.g. imidacloprid)

SPoT samples from 92 – 100 fixed monitoring stations, annually



Regional Monitoring



Regional Monitoring

- Emerging contaminants
 - *Region 3 Region 9*
 - *Microcystin and Cyano bacteria*
 - *Region 4 –Pilot CEC program*
 - *Region 5 fipronil TIE study*
 - *Region 7 Chlopyrifos*
 - *Region 9 PBDEs and pyrethroids in fish tissue*



THE REGIONAL MONITORING PROGRAM AND CECS

State of California Pilot Study: Monitoring
Constituents of Emerging Concern (CECs) in
Aquatic Ecosystems

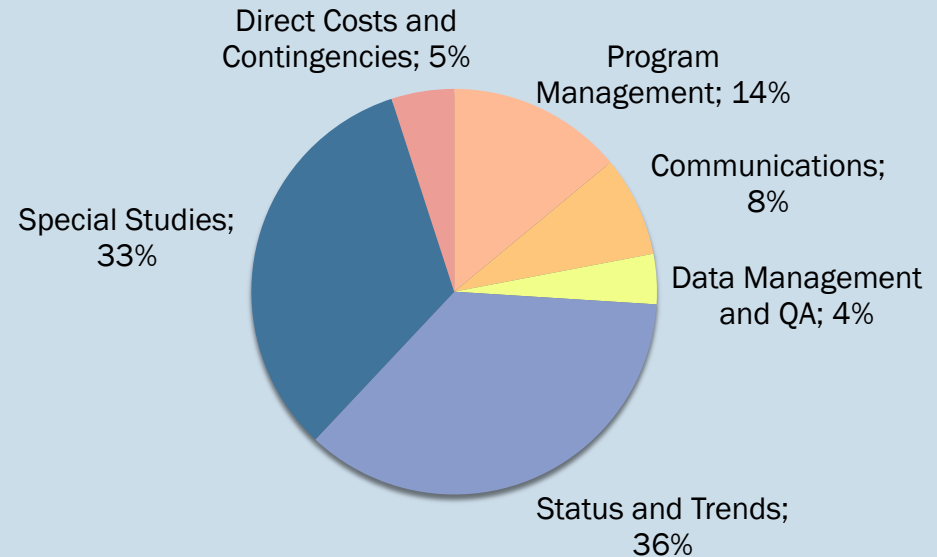
Rebecca Sutton and Jay Davis
San Francisco Estuary Institute, Richmond
CA

September
12th, 2013

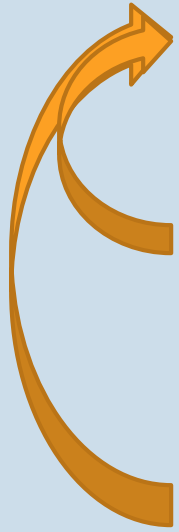
The RMP

- Goal: Collect data and communicate information about water quality in the San Francisco Estuary to support management decisions
- Multi-Year Plan updated annually
- \$3.5 million per year
- Monitoring focus:
 - Status and Trends
 - Special Studies

RMP Annual Budget



RMP CEC STRATEGY



- Measuring and prioritizing CECs in Bay
- Learn from others
- Using non-targeted monitoring
 - Broadscan techniques
 - Bioanalytical techniques
- Articulated in RMP CEC Strategy Document

1. MEASURING & PRIORITIZING

- Hundreds of chemicals monitored in the Bay
- Summarized in RMP CEC Synthesis Document and the latest *Pulse of the Bay*

Acetaminophen
Albuterol
Bifenthrin
Chlorothalonil
Chlorpyrifos
Chlorpyrifos methyl
Chlorpyrifos, oxon
Chlorpyrifos, oxy
Cinerin-1
Cyanazine
Cyfluthrin, total
Cyhalothrin, lambda, total
Cypermethrin, total
Dacthal
DCBP(p,p')
Deltamethrin
Desethylatrazine
Diazinon
Diazoxon
Dimethoate
Diuron
Esfenvalerate/Fenvalerate, total
Esfenvalerate/Fenvalerate-1
Ethion

1. MEASURING & PRIORITIZING

Risk Level Description	CECs in San Francisco Bay
Tier IV: High Concern	Bay occurrence data suggest a high probability of a moderate or high level effect on Bay wildlife
Tier III: Moderate Concern	Bay occurrence data suggest a high probability of a low level effect on Bay wildlife
Tier II: Low Concern	Bay occurrence data or predicted environmental concentrations suggest a high probability of no effect on Bay wildlife
Tier I: Possible Concern	Potential for concerns or uncertainty in measured or predicted Bay concentrations or toxicity thresholds suggest uncertainty in the level of effect on Bay wildlife

1. MEASURING & PRIORITIZING

Risk Level Description	CECs in San Francisco Bay
Tier IV: High Concern	None
Tier III: Moderate Concern	PFOS Fipronil Nonylphenol & nonylphenol ethoxylates PBDEs
Tier II: Low Concern	Pyrethroids Pharmaceuticals & personal care products HBCD
Tier I: Possible Concern	Alternative flame retardants Bisphenol A Plasticizers Pesticides Many, many others

2. LEARN FROM OTHERS

- Review the literature
 - Occurrence
 - Toxic
 - Persistent
 - Bioaccumulative
- Consulting with experts: Emerging Contaminants Workgroup
 - Lee Ferguson (Duke)
 - Jennifer Field (OSU)
 - Phil Gschwend (MIT)
 - Derek Muir (Environment Canada)
 - David Sedlak (UCB)

Environ. Sci. Technol.

Identifying New Persistent and Bioaccumulative Organics Among Chemicals in Commerce

PHILIP H. HOWARD^{*,†} AND
DEREK C. G. MUIR[‡]

SRC, Environmental Science Center, 6502 Round Pond Road, North Syracuse, New York, and Aquatic Ecosystem Protection Research Division, Environment Canada, 867 Lakeshore Road, Burlington, Ontario

Received November 6, 2009. Revised manuscript received January 19, 2010. Accepted January 22, 2010.

The goal of this study was to identify commercial chemicals that might be persistent and bioaccumulative (P&B) and that were not being considered in current Great Lakes, North American, and Arctic contaminant measurement programs. We combined the Canadian Domestic Substance List (DSL), a list of 3059 substances of "unknown or variable composition complex reaction products and biological materials" (UVCBs), and the U.S. Environmental Protection Agency (U.S. EPA) Toxic Substances Control Act (TSCA) Inventory Update Rule (IUR) list of

3. USING NON-TARGETED APPROACHES: BROADSCAN ANALYSES

- Challenge to evaluate individual CECs
- New GC x GC TOF/MS instrument
 - Two-year RMP study with NIST to evaluate Bay seal and bivalve tissue
- Large libraries to identify compounds
 - NIST library plus Howard and Muir list

Seal 6050 fraction 1



3. USING NON-TARGETED APPROACHES: BIOANALYTICAL TOOLS

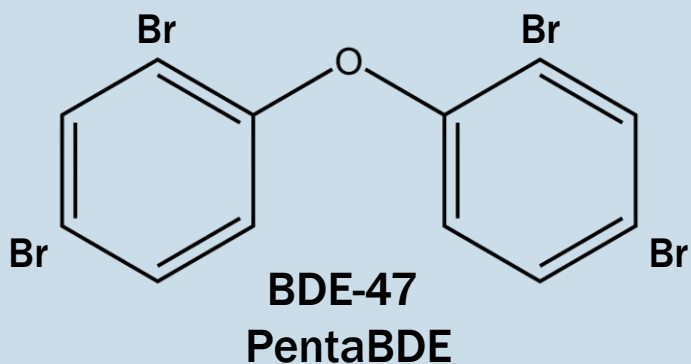
- Broad, non-targeted approach to identifying estrogenic compounds
 - Linking cellular level effects to effects in fish
- 2013 RMP Study with Nancy Denslow (Univ. Florida)/SCCWRP
 - Estuarine fish (*Menidia beryllina*)
 - Endocrine disrupting compounds: Estrone, Bisphenol A, 4-nonylphenol, Galaxolide



©2011 Bill Stagnaro

PBDEs

- Polybrominated diphenyl ethers
- Synthetic flame retardants added to all kinds of products



TRIBUNE WATCHDOG

Playing with fire

A deceptive campaign by industry brought toxic flame retardants into our homes and into our bodies. And the chemicals don't even work as promised.

BY PATRICIA CALLAHAN AND SAM ROE
Tribune reporters

Dr. David Heimbach knows how to tell a story. Before California lawmakers last year, the noted burn surgeon drew gasps from the crowd as he described a 7-week-old baby girl who was burned in a fire started by a candle while she lay on a pillow that lacked flame retardant chemicals.

"Now this is a tiny little person, no bigger than my Italian greyhound at home," said Heimbach, gesturing to approximate the baby's size. "Half of her body was severely burned. She ultimately died after about three weeks of pain and misery in the hospital."

Heimbach's passionate testimony about the baby's death made the long-term health concerns about flame retardants voiced by doctors, environmentalists and even firefighters sound abstract and petty.

But there was a problem with his testimony: It wasn't true. Records show there was no dangerous pillow or candle fire. The baby he described didn't exist.

Neither did the 9-week-old patient who Heimbach told California legislators died in a candle fire in 2009. Nor did the 6-week-old patient who he told Alaska lawmakers was fatally burned in her crib in 2010.

Heimbach is not just a prominent burn doctor. He is a star witness for the manufacturers of flame retardants.

His testimony, the Tribune found, is part of a decades-long campaign of deception that has loaded the furniture and electronics in American homes with pounds of toxic chemicals

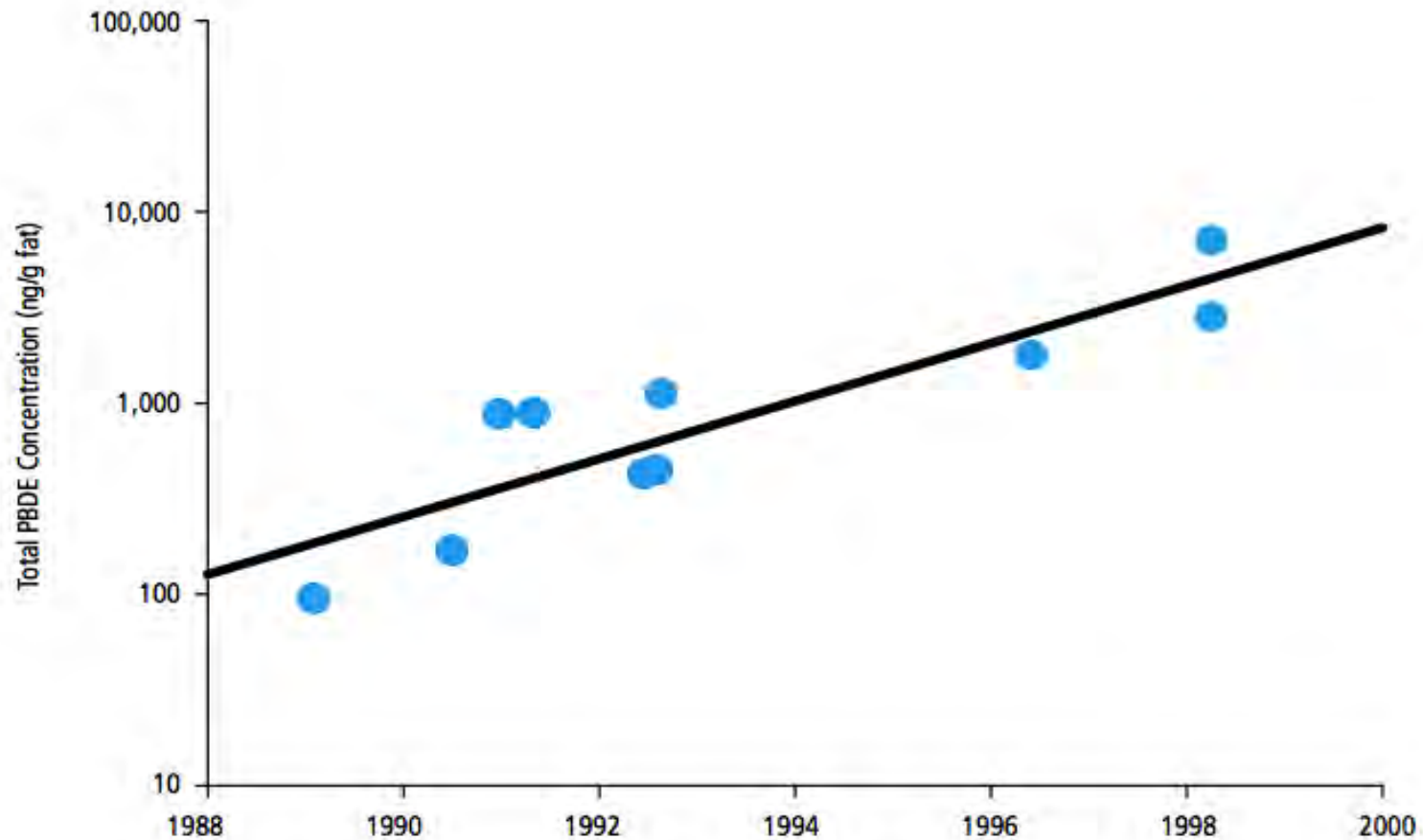
Today, scientists know that some flame retardants escape from household products and settle in dust. That's why toddlers, who play on the floor and put things in their mouths, generally have far higher levels of these chemicals in their bodies than their parents.

Blood levels of certain widely used flame retardants doubled



PBDEs: SF BAY HOT SPOT

Bay harbor seal PBDE levels doubled every 1.8 years



She et al. 2002

PBDEs: BANS & PHASE-OUTS

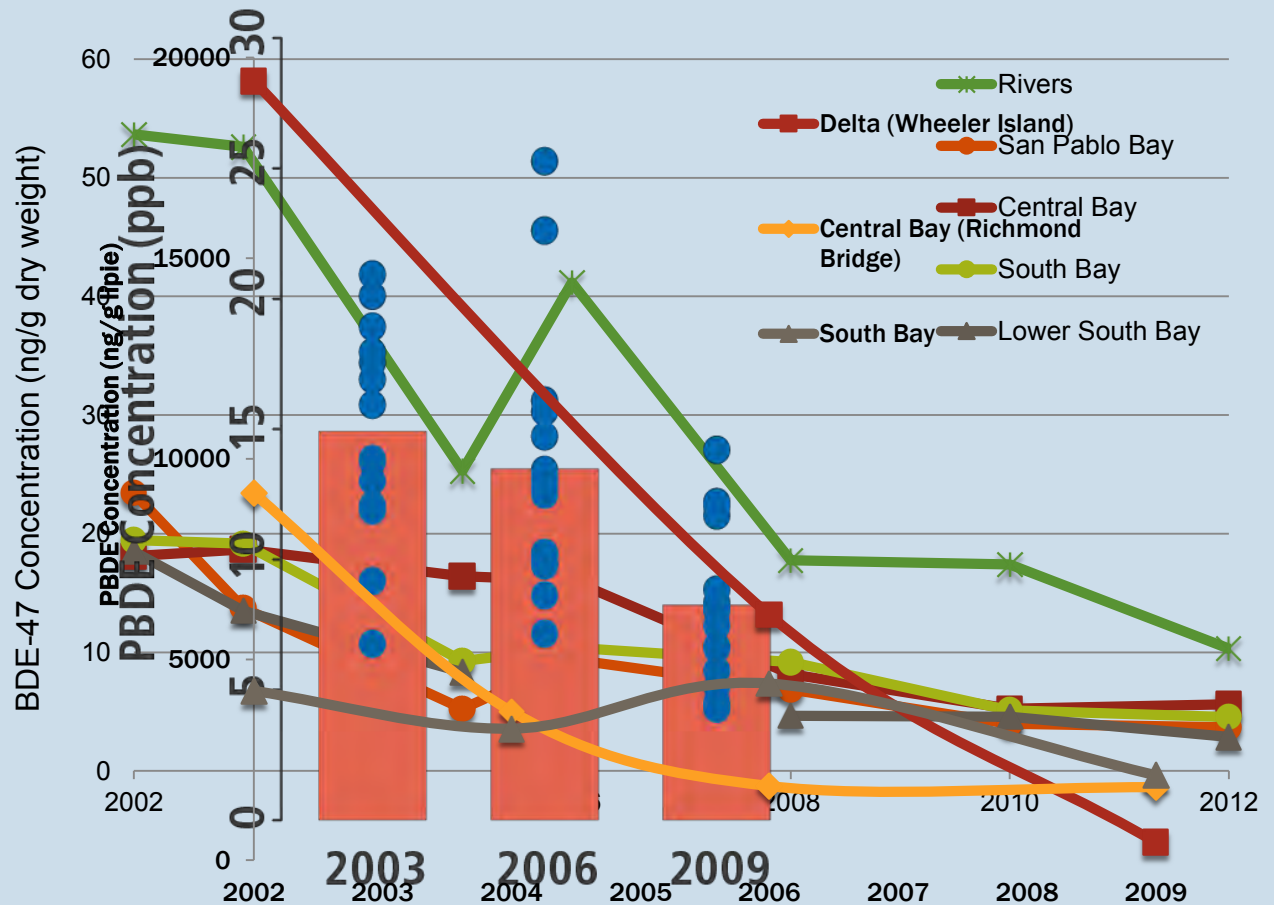
**US phase-out 2004,
California ban 2006**

**US phase-out
2013**



PBDE DECLINES IN BAY BIOTA

- Bivalves
- Sport Fish
- Cormorant Eggs

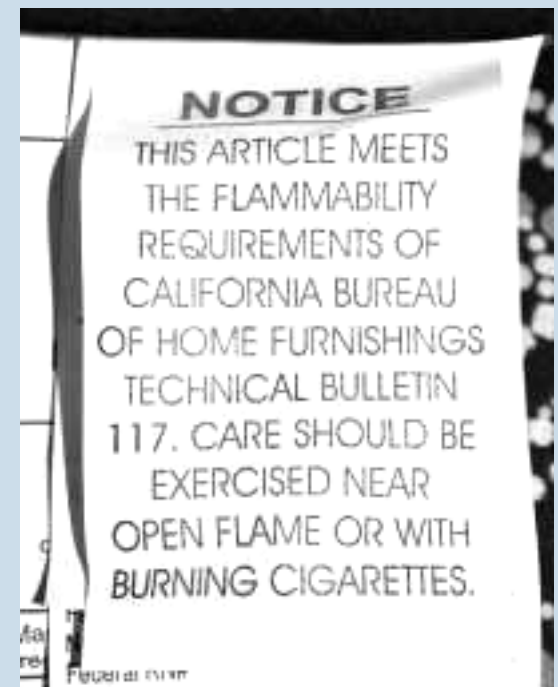


PBDEs: MODERATE CONCERN

Risk Level Description	CECs in San Francisco Bay
<p data-bbox="144 468 743 514">Tier III: Moderate Concern</p> <p data-bbox="144 645 299 691">PBDEs</p>	<p data-bbox="776 468 1781 568">Bay occurrence data suggest a high probability of a low level effect on Bay wildlife</p> <p data-bbox="776 639 1047 685">Good News:</p> <p data-bbox="776 702 1105 748">Levels declining</p> <p data-bbox="776 759 1665 805">Bay sport fish safe to eat (3 servings/week)</p> <p data-bbox="776 816 1781 916">Tern egg study finds no effects to reproduction or development</p> <p data-bbox="776 988 1193 1033">Potential Concern:</p> <p data-bbox="776 1051 1754 1150">Sediment levels → polychaete larval settlement and growth</p> <p data-bbox="776 1162 1568 1208">Fish levels → pathogenic susceptibility</p> <p data-bbox="776 1219 1761 1319">Seal levels → correlation with increased white blood cell count, decreased red blood cell count</p>

ALTERNATIVE FLAME RETARDANTS

- CA flammability standards lead to use of flame retardants
- Efforts to change standards:
 - Improve fire safety AND reduce use of flame retardants
- Meanwhile, manufacturers use alternative flame retardants instead of PBDEs
 - SFEI collaboration identified compounds in foam furniture and baby products
- Many flame retardants have little to no toxicity data
 - Chlorinated tris is a carcinogen



BAY MONITORING DATA: ALTERNATIVE FLAME RETARDANTS

Alternative Flame Retardants	Water*	Sediment	Mussels	Fish	Bird Eggs	Seals
HBCD		+	+	+	+	+
Dechlorane Plus (DP)		+	+	+	+	+
PBEB		+	+	-	-	+
DBDPE		-				
BTBPE		+	-	-	-	-
HBB		-	-	-	-	-
BEH-TBP**		-	-		-	
EH-TBB**		-	-	-	-	-
TDCPP or Chlorinated Tris	+	+	-		-	
TCPP	+	+	-		+	
TPhP	+	+	+		-	
TCEP	+				+	
TBP	+				-	
TBEP	-				+	
TEHP	-				-	
TPrP					-	
Tris(2,3-dibromopropyl) phosphate, Tricresyl phosphate, 2-Ethylhexyl- diphenyl phosphate, Tris(2-bromo-4- methylphenyl) phosphate					-	

WHAT'S NEXT?

- Pulse of the Bay
- State of the Estuary Conference
 - Combined with RMP Annual meeting
 - Downtown Oakland, October 29th and 30th
 - Focus on Contaminants of Emerging Concern
- RMP CEC Web Page

WHAT'S NEXT?

■ 2014

- Bioanalytical tools
- Monitoring alternative flame retardants
- Reviewing work by others
- PPCP special study proposal
- Ongoing work to prioritize current use pesticides

■ Beyond

- CECs are a continuing priority
- Reviewing work by others

RESOURCES

- Email: RebeccaS@sfei.org & Jay@sfei.org
- Website: www.sfei.org
- Coming soon: RMP CEC Synthesis & Strategy documents

Thank you!
Any questions?

Southern California: CEC Monitoring and Technology Development

SCCWRP

Nathan Dodder, Alvina Mehinto, Keith Maruya

Bight Program

- Designed to measure the extent and magnitude of sediment contamination throughout the Bight
- Sampling every 5 years, from 1998 – 2013, > 300 stations from embayments to the lower slope
- Purpose
 - Measures conditions throughout the Bight
 - Puts smaller scale surveys in a larger context
 - Allows habitat conditions to be compared
- Starting in B '03 efforts were made to incorporate CECs
 - Investigate reproductive anomalies in flatfish

Bight '03 - WWTP Discharge Effects on Flatfish



Measured CECs in:

1. effluent
2. site water
3. sediment
4. flatfish liver (hornyhead turbot)

Measures of biological effect:

1. Hormones
2. Feminization
3. Reproduction
4. Population size



Bight '03 - Flatfish Results



- Hydrophilic CECs were detected in effluent and seawater at high frequency (50-100%)
- Hydrophobic CECs and legacy contaminants were detected at high frequency in sediments and tissues (e.g., PBDE, nonylphenols)
- But results were inconclusive
- Although alterations in hormone systems were observed,
 - Little relation to POTW discharges
 - Uncertain hormone baseline conditions
 - Low frequency of intersex occurrence
 - Population impacts not evident

Bight '08 and '13 CEC Efforts

- B '08 CEC sediments measurements:
 - Observed the highest PBDE (flame retardants) and pyrethroid (pesticides) concentrations in embayments
- B '13 CEC measurements in coastal sediments:
 1. PBDE
 2. Pyrethroids / Fipronils
 3. Alkylphenols (surfactants and byproducts)
 4. Perfluorinated compounds (polymers)
- B '13 CEC targeted survey at municipal outfalls:
 1. Alkylphenols
 2. Perfluorinated compounds

Bight '13 - Bird Survey

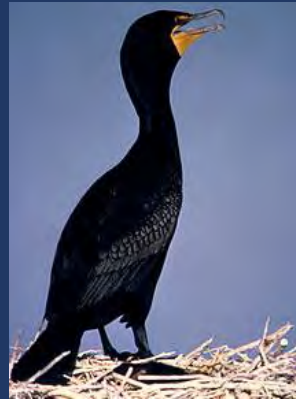
Pelagic forager: Caspian tern

(*Hydroprogne caspia*, formerly *Sterna caspia*)



Benthic forager: Cormorant

(*Phalacrocorax auritus*)



Species of concern: CA
Least Tern

(*Sterna antillarum browni*)



Mixed forager: Western Gull

(*Larus occidentalis*)

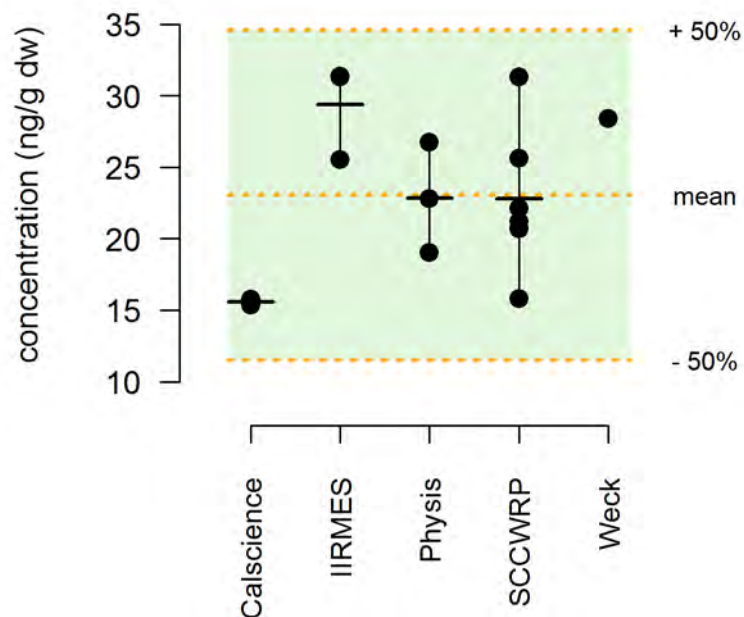


1. What is the extent and magnitude of PBDE and PFC contamination across 14 sampling locations covering the Bight?
2. What is the variation between species and habitats?

Bight Program – Chemistry QA/QC

- Most analytes are measured by multiple laboratories
- There must be assurance that results are comparable
- Every Bight includes inter-calibration exercises and follows common QA/QC
- Has resulted in improved laboratory performance and confidence in the combined results

Permethrin in Ballona Creek sediment reference material (B'13)



CECs in Effluent Dominated Rivers

- Sponsored by LARB/SWAMP
- Phase 1 (completed 2011)
 - Document occurrence & fate of >60 CECs in LA and SG rivers
 - Samples downstream of water reclamation plants had higher numbers of detected CECs
 - Chlorinated phosphate flame-retardants detected at the highest concentrations
 - Little attenuation down to the estuary was observed
 - Bifenthrin, diclofenac, galaxolide and permethrin exceeded thresholds to trigger monitoring
- Phase 2 (ongoing)
 - Study occurrence of CECs in the Santa Clara River system
 - Measure CECs in sediment and fish tissues in these systems

Additional Regional Studies (2010-2011)

Agency	Watershed	Sampling	Results
Santa Ana Watershed Project Authority (SAWPA)	Santa Ana River	23 WWTP effluents 2 river stations 2 aqueducts 13 CECs	Concentrations did not exceed known effects thresholds
San Diego Regional Board	San Diego, Santa Margarita, and Tijuana Rivers	Targeted septic tanks and WWTP discharge 24 CECs	Study ongoing

Statewide Mussel Watch CEC Pilot

NOAA, SWRCB, SFEI, SCCWRP



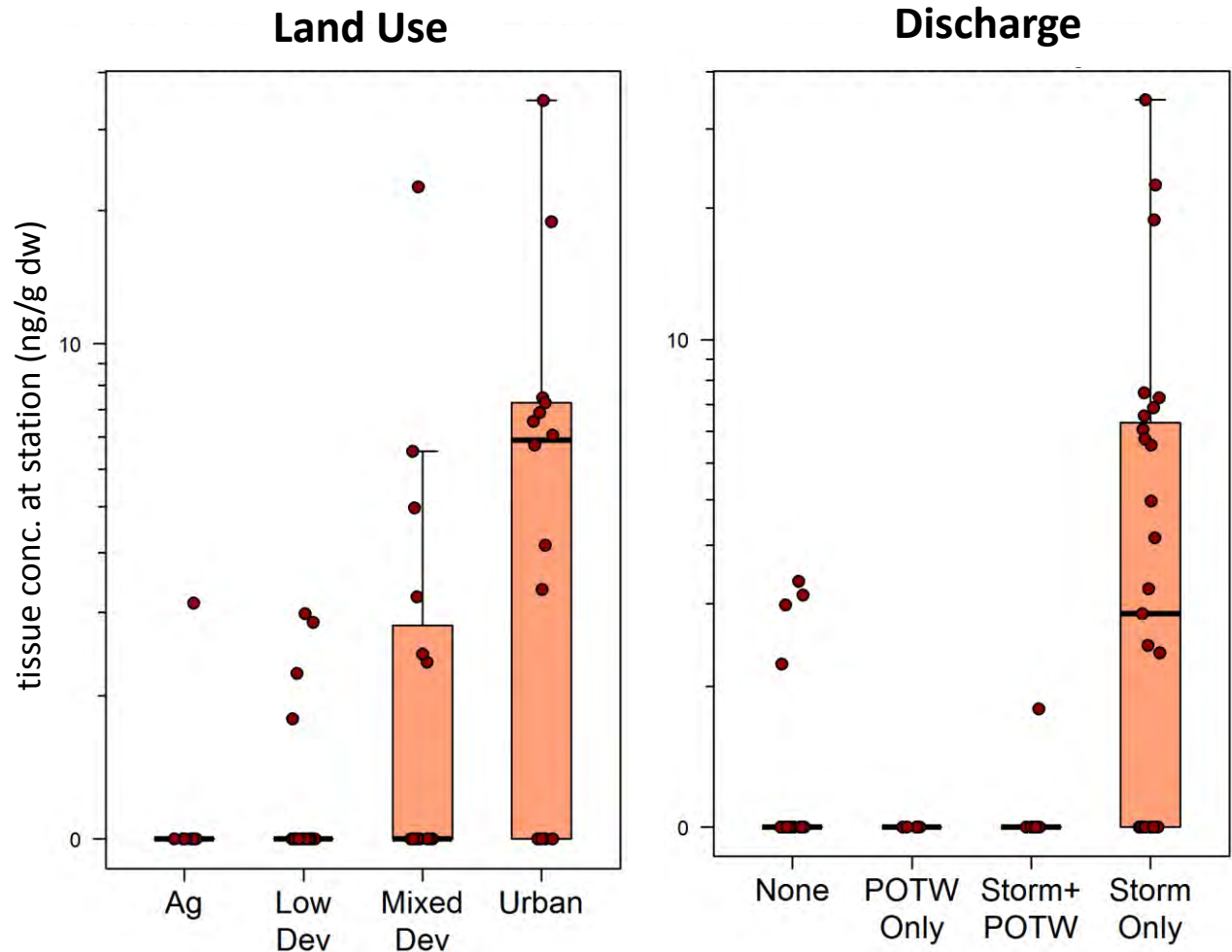
- Address data gaps in the occurrence of coastal CECs in California
- Sampling of 68 stations in 2009-2010 for 167 CECs
- Proximity to urbanization and discharges were investigated
- Provides a CEC dataset for the design of future surveys

MW CEC Pilot – Results

Alkyphenol, PBDE, and PFC concentrations were higher on average at stations

1. in urban areas
2. impacted by stormwater

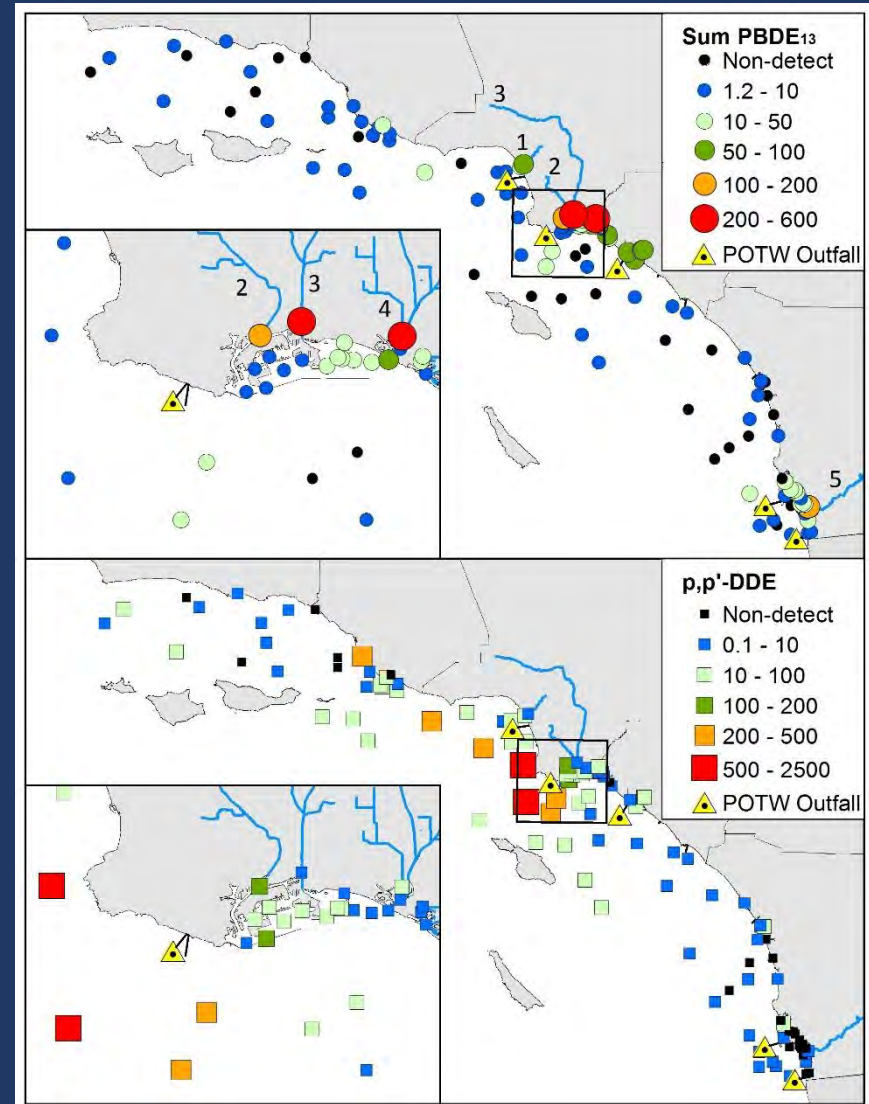
Example: Perfluorinated Compounds



Stormwater

- Very few focused studies on CECs in stormwater discharge
- Legacy contaminant data indicates stormwater loading is \geq WWTP discharge
- In addition to Mussel Watch, Bight '08 indicated stormwater is a source of CECs
- Stormwater contributions to coastal watersheds remains a significant data gap (relative to WWTPs)

Bight '08



CEC Monitoring Summary

Occurrence

- Effluent Dominated Rivers
 - Occurrence of CECs confirmed
 - Some exceeded monitoring trigger quotients; many did not
 - SoCal channelized systems act as rapid conduit to coast
- Embayments and Oceans
 - The regionally broad Bight Program and Mussel Watch provide the main datasets
 - Occurrence data from focused surveys and an understanding of CEC fate in specific systems is lacking
 - Data on stormwater contributions is lacking

Biological Effects

- Endocrine effects on wildlife remain unclear
- Interpretability of methods/tools should be improved

Technology Development

Passive Sampling Devices



- Panel recommendation to investigate the use of passive samplers
- Diffusion transports contaminants to a sorbent material
- Different sorbent materials target various chemical classes
- Can mimic the exposure of aquatic organisms



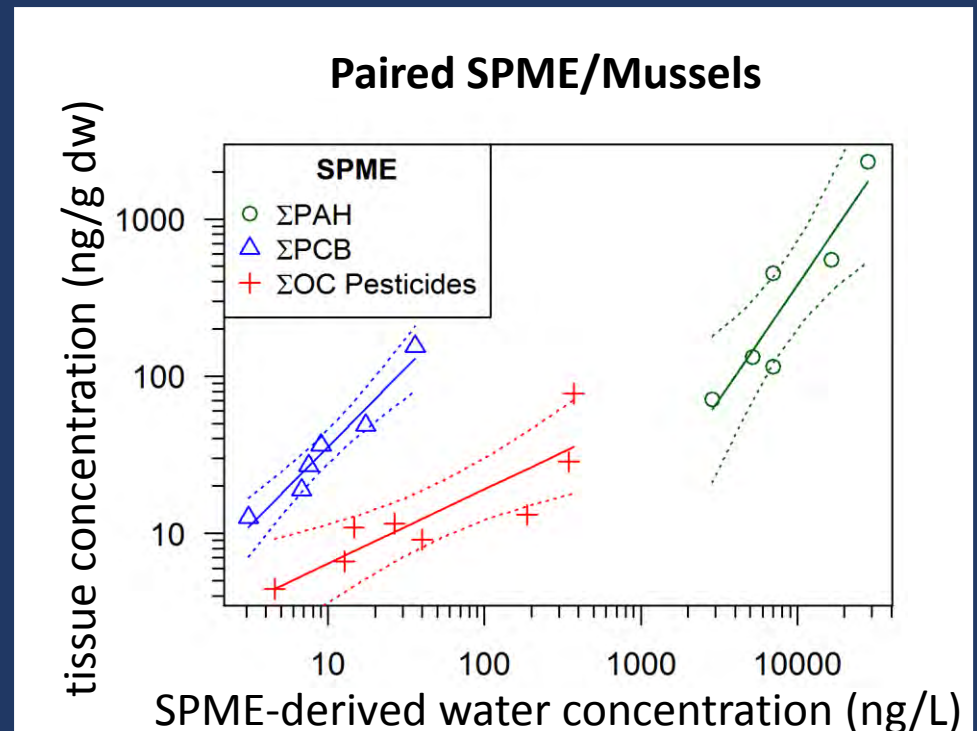
POCIS



PED

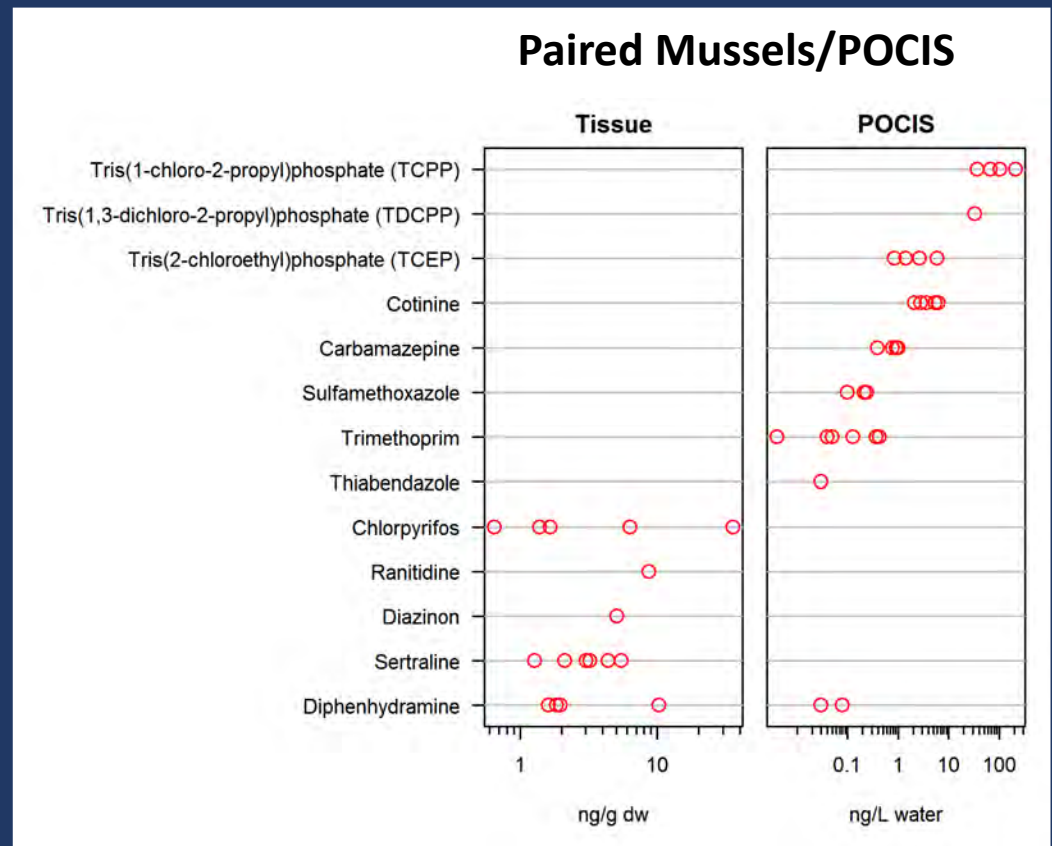


SPME



Why use passive sampling devices?

- Concentrate trace levels of chemicals resulting in increased sensitivity and lower detection limits than may be possible with a grab sample of 1 to 2 L of water
- PSDs can be tailored to sample a wide range of contaminants, many of which are water soluble and may not bioaccumulate
- Issues of metabolism, excretion and survival/condition (e.g. using live organisms) can be avoided with PSDs



Non-Targeted Mass Spectrometry

Sample Type	Total # of Non-Monitored Anthropogenic Compounds and Unknowns
SoCal bottlenose dolphin blubber (8)	260
San Diego Bay black skimmer eggs (4)	30

- Unexpected compounds are usually lower in abundance than typically monitored contaminants
- But the total number of unexpected contaminants is high enough to warrant further investigation
- Non-targeted methods are not intended to replace targeted quantification
 - Suggest contaminants for larger targeted surveys
 - Identify compounds causing toxicity (TIE)

Monitoring Biological Responses

- *In vitro* cell assays screen CECs based on toxicological modes of action
 1. Identifies potential toxicity related to sexual development and reproduction
 2. Detects all contaminants that have the mode of action, including unknowns
 3. Higher-throughput and more sensitive relative to other tests
- Currently, the assays are being developed to screen for contaminants in recycled waters (SCCWRP, UF, UCR, USF, UAZ).
 - Promising inter-laboratory comparison results
- SCCWRP initiative to develop assays for environmental matrices (receiving waters, sediment, tissue)

Linkage Study with Fish



- Collaboration with University of Florida, funded by SFEI
- *Menidia beryllina* (estuarine silverside) model
- Gain a mechanistic understanding of how cell assay response to CECs predicts whole organism response

Potential organism toxicity?

1. *In vitro*
Cell assays

- High-throughput bioscreening based on mode of action

Molecular response in organism? (Link)

2. Biomarkers

- Targeted gene expression (qPCR)
- Vitellogenin levels

Toxicity in organism?

3. Whole organism population

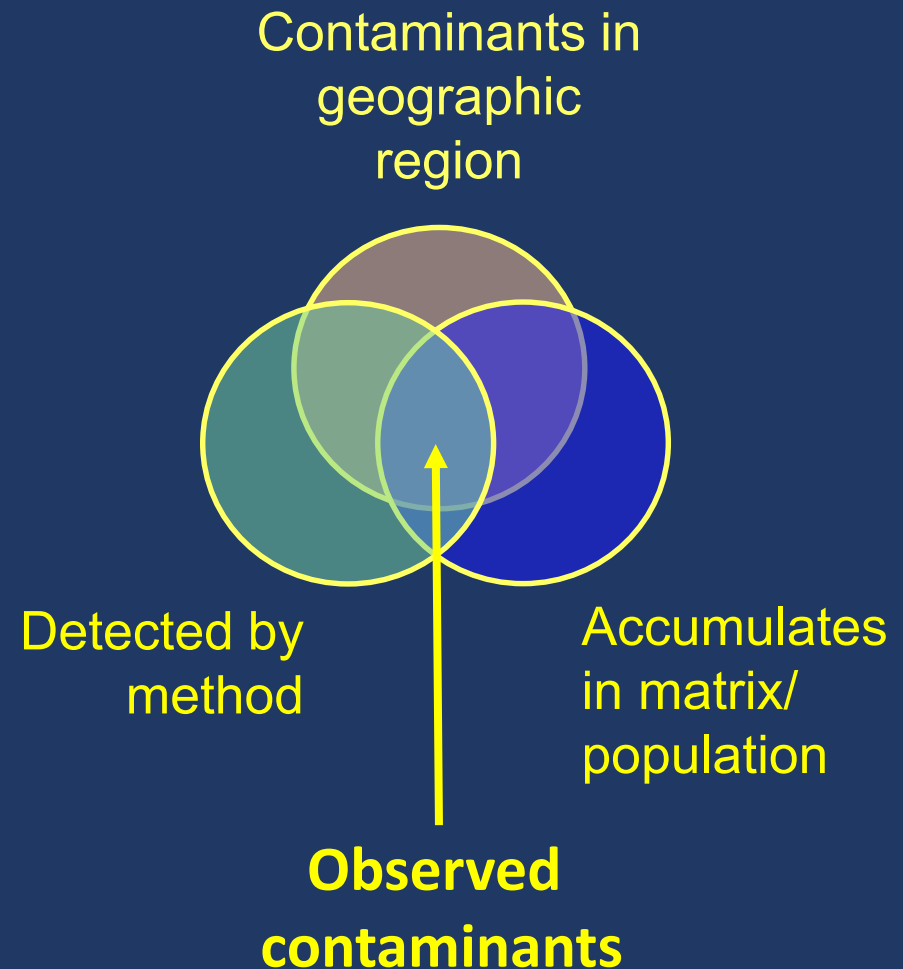
- Survival
- Growth

Thank You

Technology Development for CECs

Three goals:

1. Improve water-phase contaminant sampling
2. Improve detection of unexpected contaminants
3. Sensitive and high-throughput detection of biological responses




Central Valley Regional Monitoring Programs

Ken Landau

Steering Committee Member
Delta Regional Monitoring Program

Assistant Executive Officer
Central Valley Water Board

An aerial photograph showing a winding river or canal system through a lush green valley. The water is a deep blue, and the surrounding land is vibrant green with some trees and structures visible. The image is partially obscured by a blue gradient at the bottom of the slide.

12 September 2013



Sacramento River Basin

- Large, reservoir controlled rivers
- Small, ag dominated surface waters
- Larger WWTPs discharge to rivers
- Smaller WWTPs seasonal discharge

San Joaquin River Basin

- Natural flows largely diverted
 - Some water left in rivers
 - Fish, Delta salinity control
- Ag dominated surface waters
- Larger WWTPs discharge to rivers

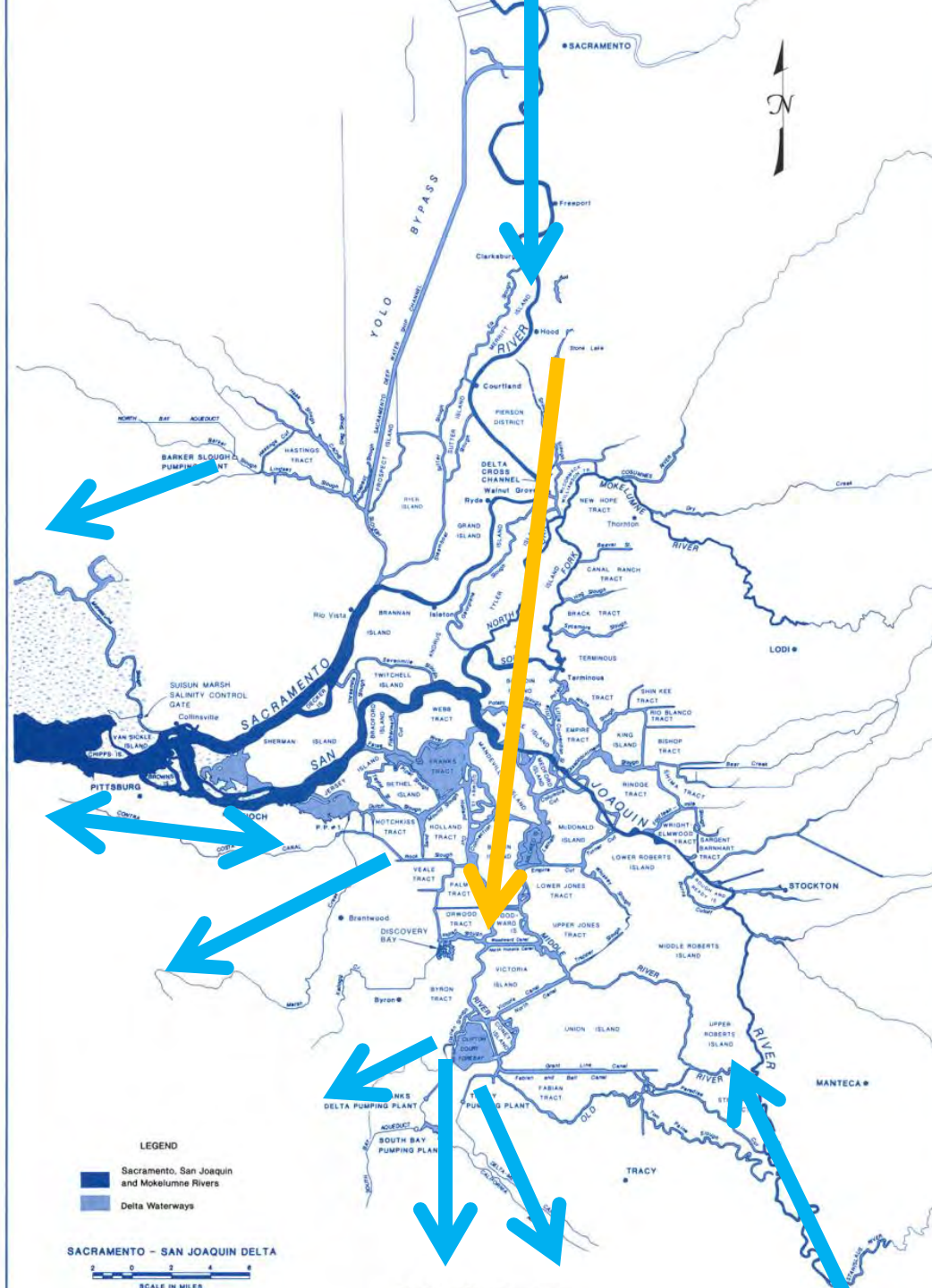
Tulare Lake Basin

- Internal drainage
- Natural flows diverted
- Limited surface waters
 - Ag dominated
- Wastewater contained on land

Delta Flows



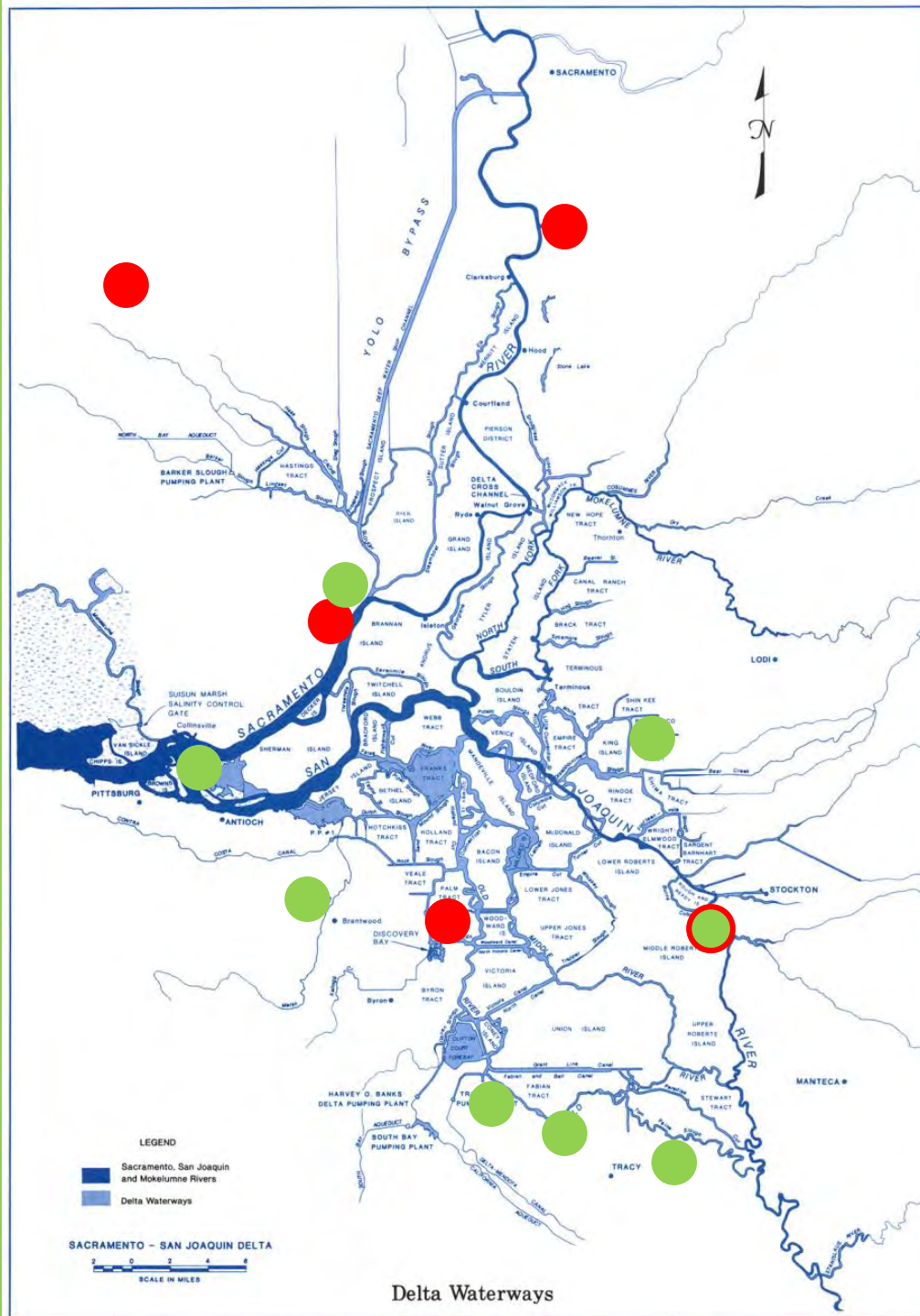
12 September 2013



NPDES POTW's

Current treatment levels

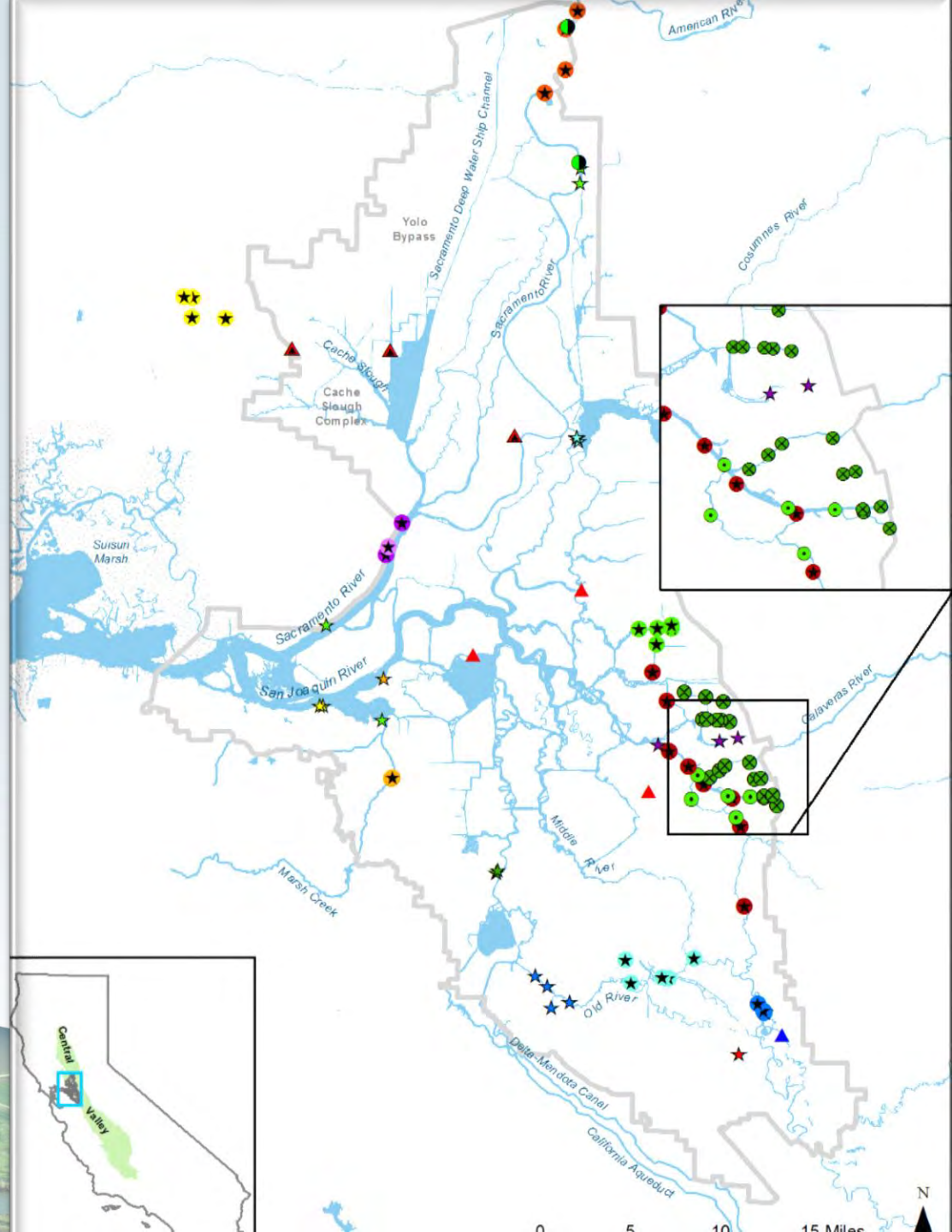
- Tertiary filtration with nitrification and denitrification
- Tertiary filtration with nitrification
- Secondary



12 September 2013

NPDES Permit Monitoring Sites

- Routine upstream /downstream for indicators
- Effluent / receiving water characterization
 - 1 to 6 times per permit cycle



12 September 2013

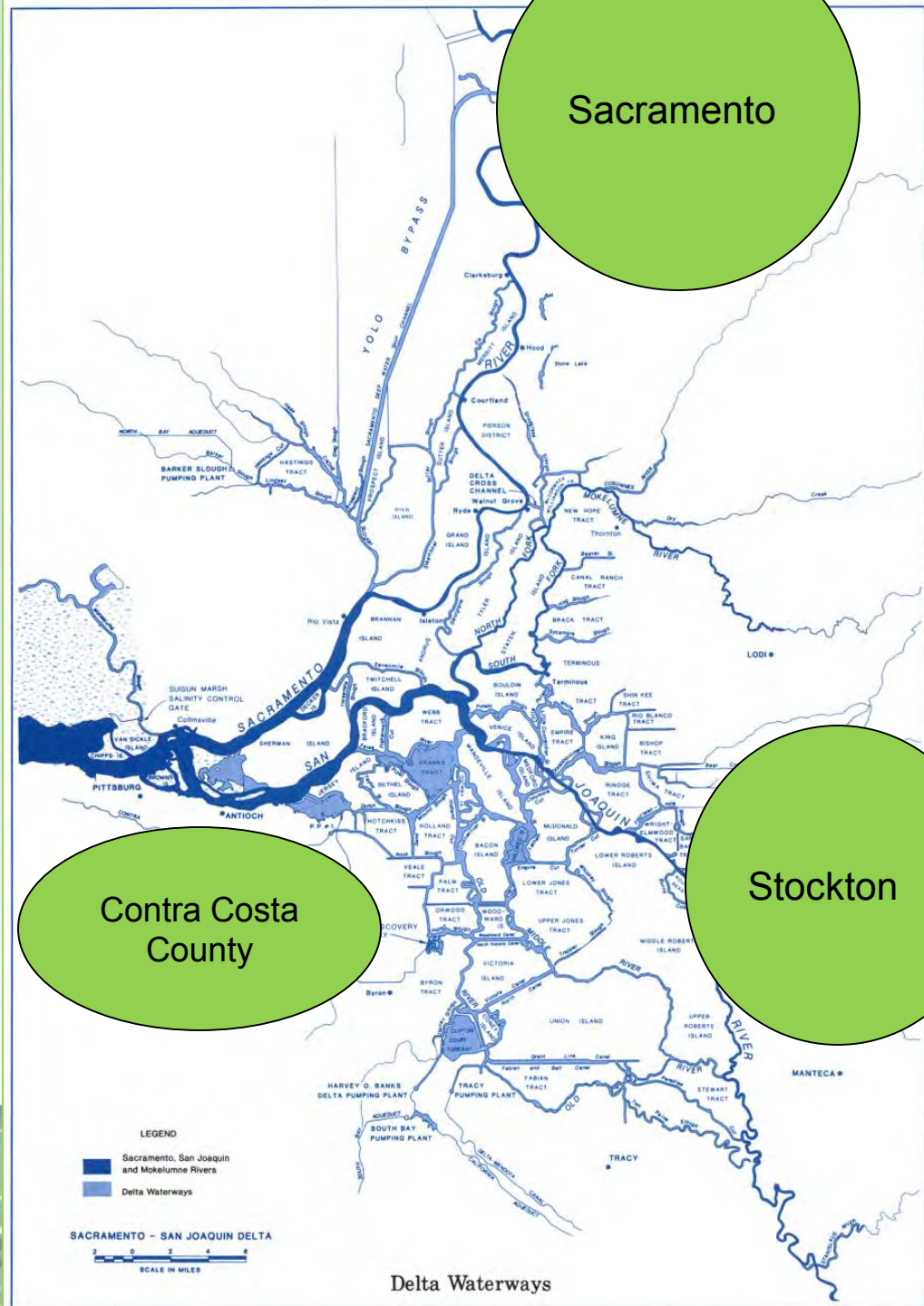


POTW Characterization

Priority Pollutants plus

- 4,4'-DDD
- 4,4'-DDE
- 4,4'-DDT
- alpha-Endosulfan
- alpha-Hexachlorocyclohexane (BHC)
- Alachlor
- Aldrin
- beta-Endosulfan
- beta-Hexachlorocyclohexane
- Chlordane
- delta-Hexachlorocyclohexane
- Dieldrin
- Endosulfan sulfate
- Endrin
- Endrin Aldehyde
- Heptachlor
- Heptachlor Epoxide
- Lindane)
- Toxaphene
- Atrazine
- Bentazon
- Carbofuran
- 2,4-D
- Dalapon
- 1,2-Dibromo-3-chloropropane (DBCP)
- Di(2-ethylhexyl)adipate
- Dinoseb
- Diquat
- Endothal
- Ethylene Dibromide
- Glyphosate
- Methoxychlor
- Molinate (Ordram)
- Oxamyl
- Picloram
- Simazine (Princep)
- Thiobencarb
- 2,3,7,8-TCDD (Dioxin)
- 2,4,5-TP (Silvex)
- Diazinon
- Chlorpyrifos

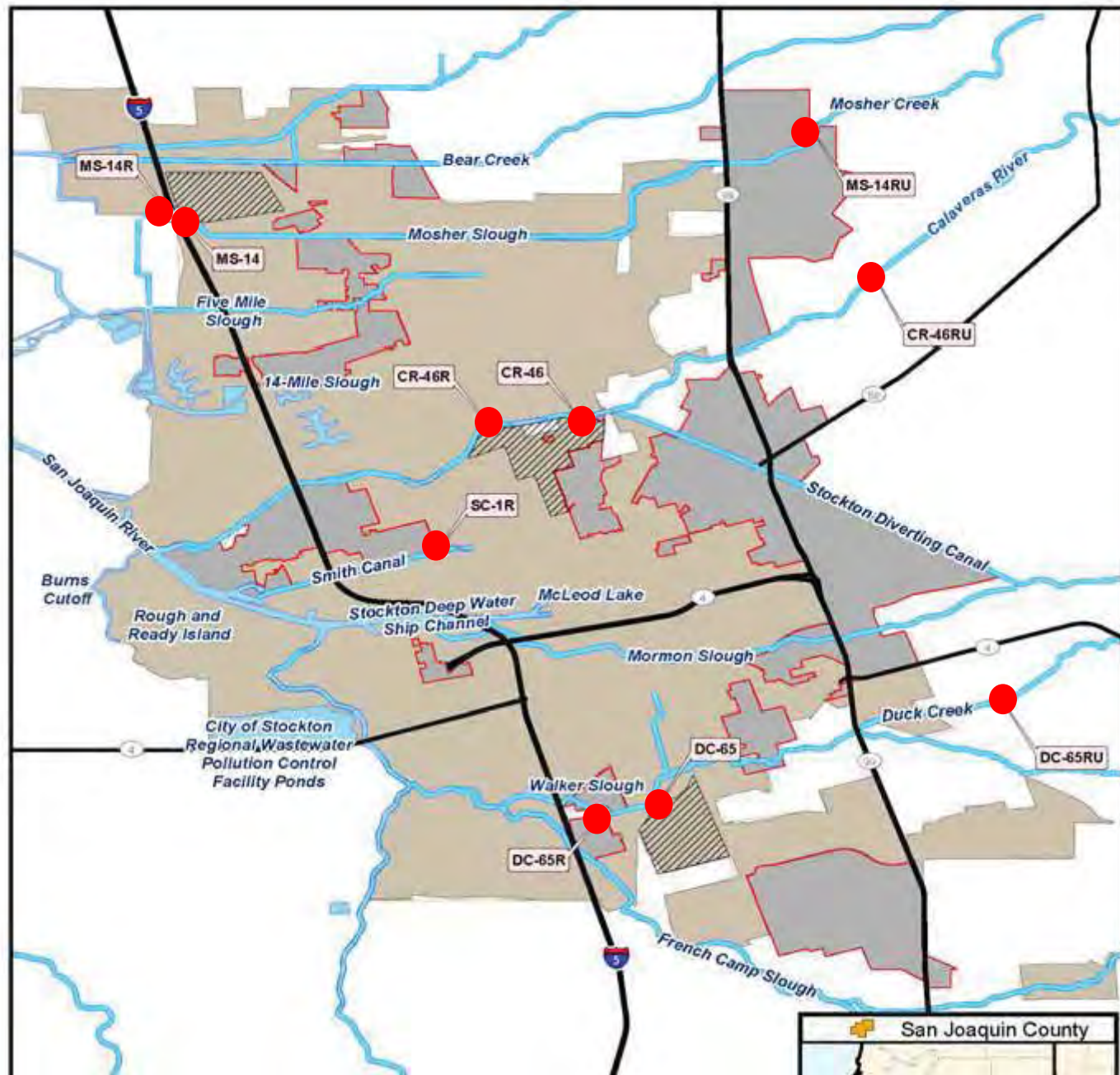
Phase I MS4s



12 September 2013

Delta Waterways

Stockton MS4 Monitoring Stations



Stockton MS4 Monitoring

PESTICIDES IN WATER COLUMN

- Chlorpyrifos
- Diazinon
- Pyrethroids

PYRETHROID PESTICIDES IN SEDIMENT

- Bifenthrin
- Cyfluthrin-1
- Cyfluthrin-2
- Cyfluthrin-3
- Cyfluthrin-4
- Cypermethrin-1
- Cypermethrin-2
- Cypermethrin-3
- Cypermethrin-4
- Deltamethrin
- Esfenvalerate/Fenvalerate-1
- Esfenvalerate/Fenvalerate-2
- Lambda-cyhalothrin-1
- Lambda-cyhalothrin-2
- Permethrin-1
- Permethrin-2

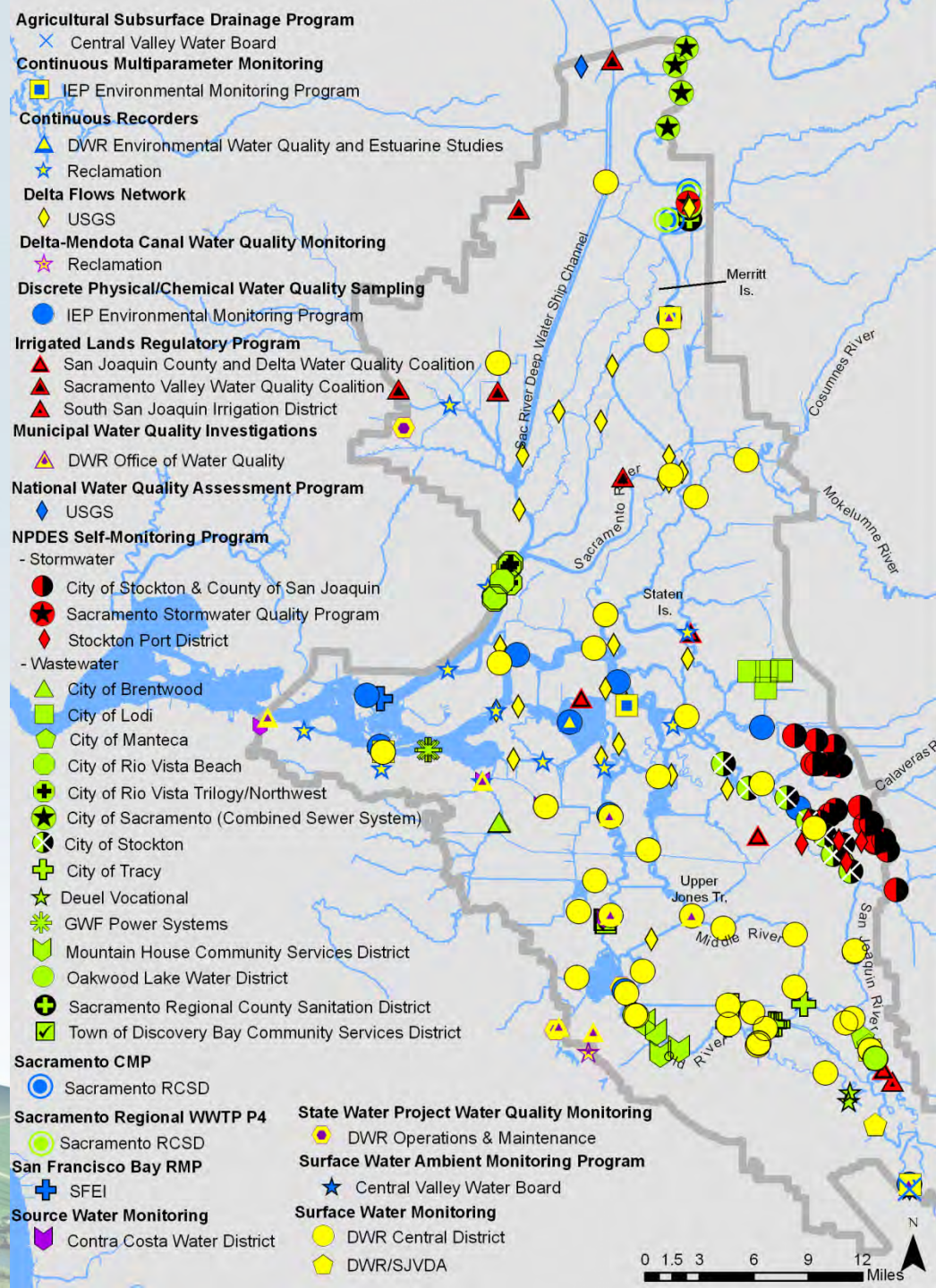


Regional Monitoring

12 September 2013

Central Valley Monitoring Directory

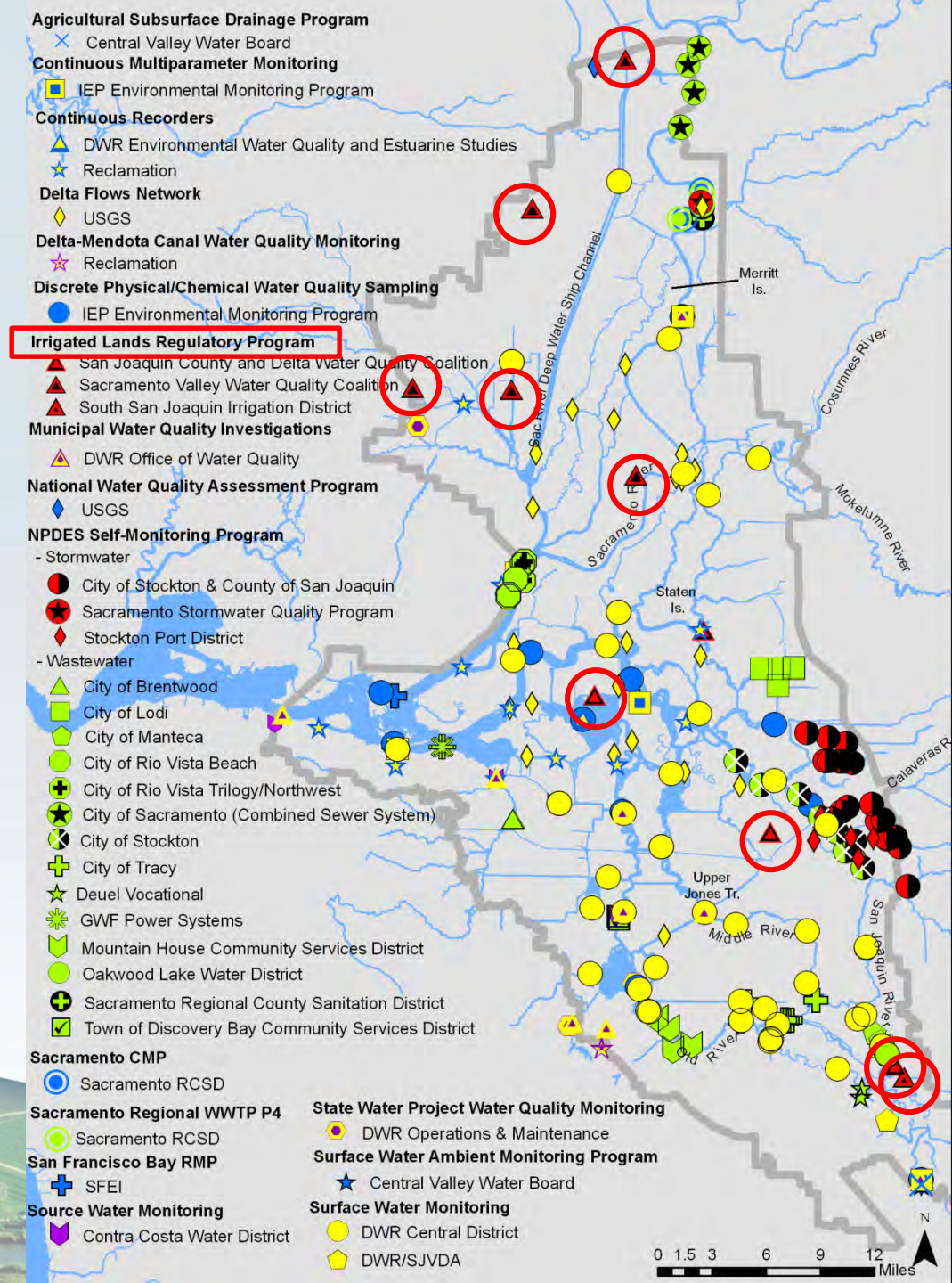
- <http://www.centralvalleymonitoring.org/>



12 September 2013

Irrigated Lands Regulatory Program

- Hundreds of sites with regular or event monitoring
- Includes pesticides
 - Chlorpyrifos
 - Water col & sediment
 - Pyrethroids
 - Sediment
- Selected to NOT include urban impacts



12 September 2013

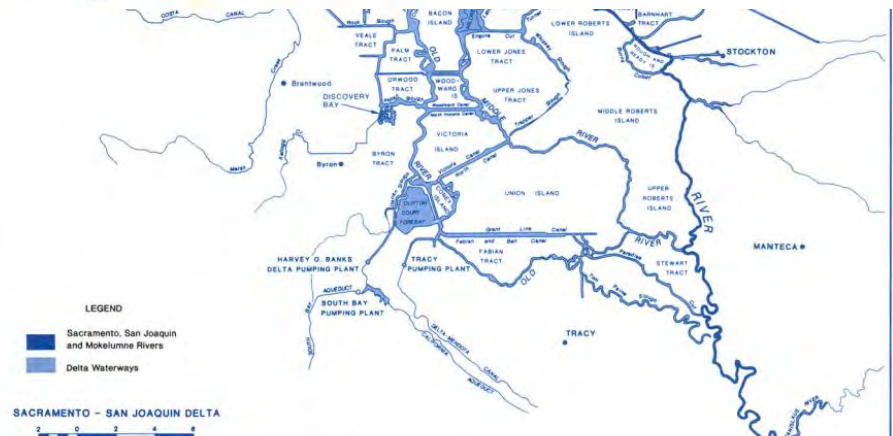
Sac. River Coordinated Monitoring Program

- Sac Wastewater and Stormwater Programs
- Initiated 1991
- 5 sampling sites
- 6x/year monitoring
 - 70 parameters
- 3x/year monitoring
 - +250 parameters

<http://www.srcsd.com/cmp.php>



12 September 2013



Sacramento Coordinated Monitoring Program

Parameters	Sample Type	Frequency
General Water Quality: DO, EC, pH, TDS, Temperature, TSS, Turbidity, UV (abs 254 nm)	Water Quality	6-8 times/year
Major Ions & Minerals: Chloride, Cyanide, Hardness	Water Quality	6-8 times/year
Mercury: Mercury (Dissolved), Methylmercury (Dissolved),	Water Quality	6-8 times/year
Metals & Trace Elements: Arsenic (Dissolved), Cadmium (Dissolved), Chromium (Dissolved), Copper (Dissolved), Lead (Dissolved), Nickel (Dissolved), , Silver (Dissolved), Zinc (Dissolved)	Water Quality	6-8 times/year
Nutrients: Ammonia as N, Dissolved Ortho-PO ₄ , Nitrate, Total N, Total P	Water Quality	6-8 times/year
Organic Carbon: DOC, TOC	Water Quality	6-8 times/year
Organic Contaminants: Acid extractable, Base-neutral extractable, Bis(2-ethylhexyl)phthalate, Hexachlorobenzene, N-Nitroso-din-propylamine, Pentachlorophenol, PAHs, VOCs	Water Quality	6-8 times/year
Pathogens & Bacteria: E. coli, Fecal Coliforms, Total Coliforms	Water Quality	6-8 times/year
Pesticides: Carbamates, Herbicides, Organophosphates	Water Quality	6-8 times/year

Data Availability	URL	Available by request
Annual Report	http://srcsd.com/cmp.php	Yes
In an electronic form (Excel)		Yes

Delta RMP



Kicked off in Sept. 2008

– Broad range of participants

Consensus on diagnosis of
problem / opportunity

Building interest, involvement
and momentum

12 September 2013

15

Photo courtesy of Steven Moore

Steering Committee

POTWs (3)

Stormwater (Phase I & Phase II)

Water Supply (SFCWA)

Regulatory (EPA and CVRWQCB)

Coordinated Monitoring (IEP)

Agriculture

Resource Agencies



Steering Committee Activities

- Mission Statement
- Committee roles and responsibilities
- Management Questions
 - Status and Trends
 - Sources and Loadings
 - Forecasting
 - Effectiveness Tracking

- Technical Advisory Committee
 - Design monitoring framework
- Steering Committee
 - Determine funding sources
 - Selecting initial study project(s)
 - Toxicity, pesticides, pathogens, nutrients
- Regional Board
 - Permit revisions to facilitate RMP
- Plan to implement monitoring in 2014

Questions ?

12 September 2013



POTW Perspective on Statewide CEC Monitoring Pilot Study

Phil Friess, Technical Services Department Head
Sanitation Districts of Los Angeles County
1955 Workman Mill Road, Whittier, CA 90601
562/908-4288, x2501 pfriess@lacsds.org

September 12, 2013





Overview

- POTW efforts to date
- General position on CECs
- Specific recommendations on upcoming studies





POTW Efforts to Date

- Wastewater community has already invested significant resources to address CECs
- Actions include:
 - Laboratory method development
 - Effluent sampling
 - Receiving water sampling
 - Numerous special studies
 - Pollution prevention efforts
 - Public outreach/education





POTW Efforts – Laboratory Method Development

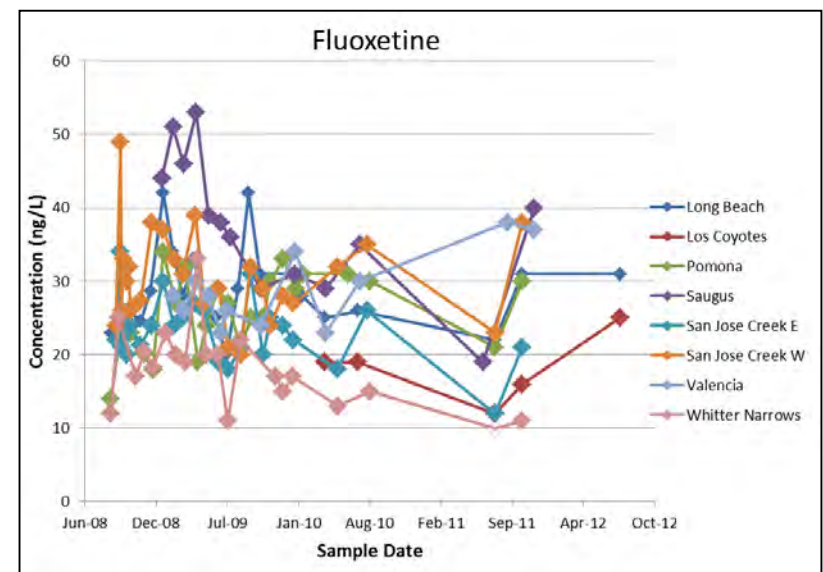
- Southern Nevada Water Authority led efforts
- LACSD started development in 2006
- Robust, accurate analytical methods





POTW Efforts – Voluntary Effluent Sampling

- Example: LACSD
- JWPCP and eight tertiary water reclamation plants
- Over 5,500 analytical results spanning five years
- 64 compounds
- Analyzed data using expert panel human health and aquatic life monitoring trigger levels
- Conclusion: only 2 compounds above MTLs: NDMA, estrone





POTW Efforts – Required Effluent Sampling

- NPDES permits in Los Angeles Region
- Required CEC special studies
- Two years of annual samples, 41 parameters
- Hormones, surfactants, PBDEs, pharmaceuticals, personal care products, pyrethroids, other current use pesticides, PFOS



Los Angeles Regional Water Quality Control Board

February 14, 2013

Mr. Philip L. Friess, Department Head
Technical Services Department
Sanitation Districts of Los Angeles County
San Jose Creek Water Reclamation Plant
P.O. Box 4998
Whittier, CA 90607-4998

**CALIFORNIA WATER CODE (Water Code) SECTIONS 13267 AND 13383 - CONSTITUENTS
OF EMERGING CONCERN (CECs) EFFLUENT MONITORING**



POTW Efforts – Receiving Water/ Ecosystem Sampling

- Example: Regional Monitoring Program for Water Quality in San Francisco Bay (RMP)
- 10-year ongoing effort overseen by SFEI
- 3-pronged approach:
 - Targeted monitoring of prioritized CECs in water, sediment, fish tissue and bird eggs
 - Tracking literature, other monitoring efforts
 - Non-targeted screening monitoring
- CECs assigned to monitoring/management tiers based on degree of risk
- 19 discrete studies to date



POTW Efforts – Special Studies

- Dozens of studies with California POTW participation
- Studies by individual agencies and joint studies with research organizations, universities, regulatory agencies, and national organizations
- Occurrence in treated water/receiving waters/sewage sludge/land
- Assessment of treatment performance
- Risk assessment
- Assessment of EDC effects on organisms all levels, from gene regulation activity up to population level effects





POTW Efforts – Pollution Prevention

- Efforts on-going for over a decade
- Key contributors include Tri-TAC, Bay Area Pollution Prevention Group, Palo Alto, EBMUD, City of San Jose, LACSD, City of LA, OCSD, and many more
- Conducted hospital outreach on pharmaceutical disposal
- Worked with CDPH on medical waste regulations and their interpretation
- Led national efforts to develop message points for residential pharmaceutical outreach
- Set up residential outreach/collection programs for pharmaceuticals





POTW Efforts – Pollution Prevention

- Residential outreach on pesticides – e.g., Our Water, Our World Program
- Pesticide regulatory efforts – work with EPA and California Department of Pesticide Regulation
- Other regulatory efforts – DTSC Safer Consumer Products Regulations
- Legislative – e.g., support product stewardship efforts, including SB 727 (pharmaceuticals)



Our Water - Our World





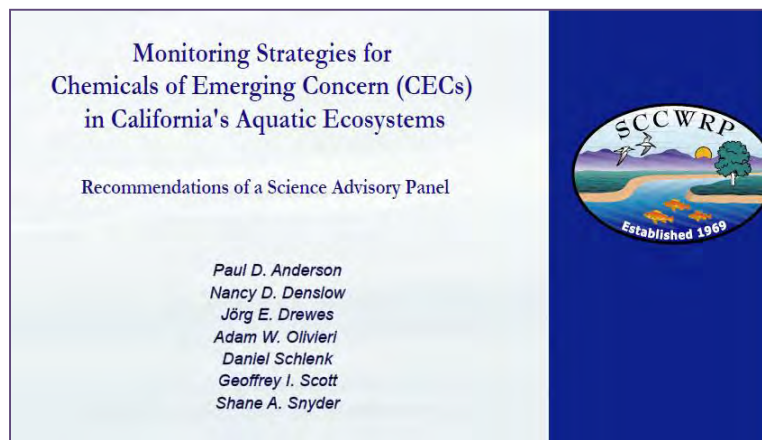
General Position on CECs

- POTW community supports focused, risk-based CEC monitoring
- Overall, efforts should be targeted at identifying problematic compounds, to inform and facilitate source control efforts



Support Expert Panel Process

- Have supported expert panel process since its inception
- Balanced panel with key specialties represented
- Systematic, scientific approach to setting monitoring priorities
- Informed, rational approach to gathering information needed to make appropriate management decisions





Support Risk-Based Prioritization

- Allows focus to be on pollutants of highest concern
- Most useful information obtained
 - Avoids use of limited resources on low risk compounds
 - Quantification of some compounds may compromise accuracy of quantification of other compounds.
 - Example: salicylic acid
 - No aquatic life threshold of concern known
 - Requires method alterations that reduce reliability and sensitivity of results for other compounds
- Most cost effective approach





Pilot Study Recommendations

- ✓ Initial studies should be designed as much as possible to identify relative POTW and stormwater contributions to focus source control efforts
- ✓ Initial studies should be designed to be compatible with future agricultural sector monitoring studies
- ✓ Special bioanalytical screening, toxicity, and antibiotic resistance studies should:
 - ✓ Utilize realistic exposures in terms of matrix and toxicant delivery
 - ✓ Examine endpoints of biological concern such as reproduction, development, and growth



Pilot Study Recommendations

- ✓ Follow framework established by the expert panel
- ✓ Maximize use of current POTW and stormwater CEC monitoring
- ✓ Leverage work with regional monitoring programs (e.g., Bight, SMC, RMP)
- ✓ Leverage work with POTWs willing to provide additional voluntary in-kind services



Pilot Study Recommendations

- ✓ Endeavor to collect accurate, representative data with adequate QA/QC that can be used on a statewide basis
- ✓ Accurate data is critical - bad data could lead to bad management decisions
- ✓ Test for appropriate compounds in appropriate matrices, as recommended by the expert panel
- ✓ Don't waste resources running all compounds in all matrices (e.g., water, sediment, tissue)
- ✓ Overall, collect information to inform meaningful management actions in a cost effective manner



Summary

- Extensive, early voluntary efforts by POTWs to address CECs
- Strongly support risk-based monitoring approach
- Strongly support expert panel process
 - Both past efforts and continuing expert panel involvement
- Some POTWs willing to provide voluntary in-kind services in current study, to promote cost-effectiveness
- Future NPDES CEC monitoring requirements should be based on Statewide Pilot Study results



Monitoring CECs in Aquatic Ecosystems

Regulatory Agency Perspective
September 12, 2013

Thomas Mumley
Assistant Executive Officer
SF Bay Water Board



Regulatory Actions



- 🐟 Product or chemical bans
- 🐟 Product or chemical use restrictions
- 🐟 Source discharge or disposal controls

EPA wants more control of chemicals

EPA from page A1

clothing and pillows. Of particular concern are rising levels of toxics found in children and developing fetuses.

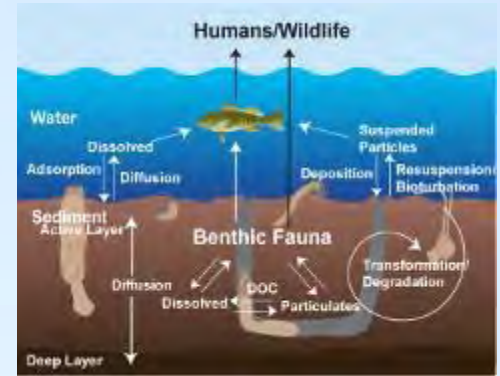
EPA chief's call

"Chemicals are ubiquitous in our environment and our

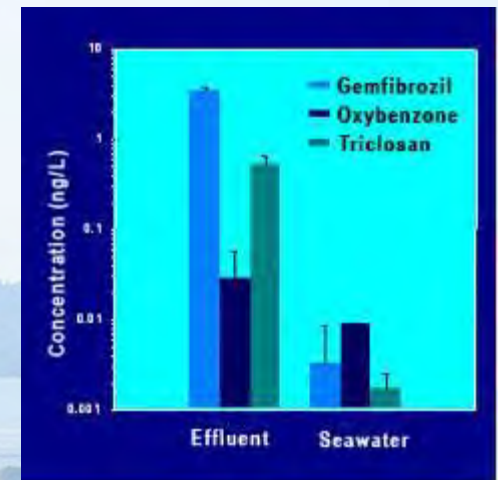
would work with Congress on legislation that would, among other things, call for chemicals to be evaluated based on health and safety risks and for manufacturers to submit toxicity data for existing and new chemicals. Legislation would also give the EPA authority to ban or restrict



Regulatory Actions



- 🐟 Human health protection standards
- 🐟 Ecological protection standards
- 🐟 Monitoring / information requirements



Who Regulates CECs in CA



**Department of Toxic
Substances Control**



- **Green Chemistry Initiative**
 - Safer Alternative Regulations
 - Toxics Information Clearinghouse

**Department of
Pesticide Regulation**



- **Evaluation & registration of pesticide products**
- **Use restrictions**

**Office of Environmental
Health Hazard
Assessment**



- **Risk Assessment**
- **Environmental and toxicological end-points**

**State and Regional
Water Boards**



- **Water Quality Standards**
- **Discharge Requirements**
- **Monitoring Requirements**

Water Board Regulatory Actions

Water quality standards

- Numerical or narrative (no toxics in toxic amounts)
- Water, sediment, or biota

Discharge requirements

Monitoring / Information requirements

Impaired waters 303(d) list

→ Total Maximum Daily Loads



Challenges



Limited data and tools

- Lack of analytical methods
- Lack of thresholds / standards



Difficult to link

- Occurrence of a chemical to an effect
- An effect to a chemical or group of chemicals



Difficult to control sources or pathways



Tiered Risk Monitoring and Management

Concentration / Risk

Management / Regulation

Tier IV: High Concern

- 303(d) list → TMDL or alternative(s)

Tier III: Moderate Concern

- Action plan or strategy
 - Aggressive pollution prevention
 - Seek product or chemical alternatives
 - Low-cost control actions

Tier II: Low Concern

- Track product use and market trends
- Easy, low-cost source identification and pollution prevention actions

Tier I: Possible Concern

- Identify and prioritize potential CECs
- Develop bio and chemistry methods

Tiered Risk Monitoring and Management

Concentration / Risk

Management / Regulation

Tier IV: High Concern

- Studies to support TMDL or alternatives

Tier III: Moderate Concern

- Trend monitoring and/or
- Fate, effects, and sources and loadings studies

Tier II: Low Concern

- Periodic ambient trend screening
- Periodic source trend screening

Tier I: Possible Concern

- Screening monitoring

Regulatory Perspective

 Goal = prevent CECs problems

 Monitoring

- Inform management decisions
- Based on informed hypotheses

