

# Water Quality Report Card

## Fecal Coliform in San Luis Obispo Creek

**Regional Water Board:** Central Coast, Region 3

**Beneficial Uses Affected:** REC1, REC2

**Implemented Through:** MS4 permits, NPDES permits, WDRs

**Effective Date:** July 25, 2005

**Attainment Date:** July 25, 2015

**STATUS** Improvement Needed

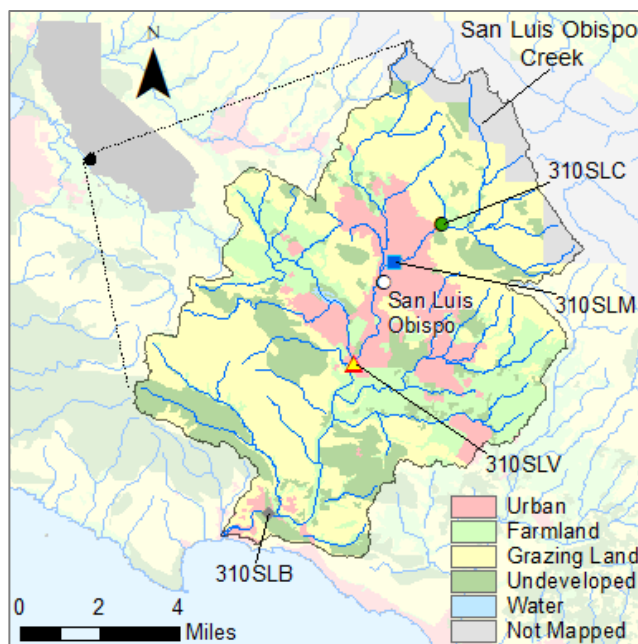
**Pollutant Type:** Nonpoint Source

**Pollutant Source:** Urban runoff, livestock background, human sources, wildlife/birds

### Water Quality Improvement Strategy

San Luis Obispo Creek, in central-western San Luis Obispo (SLO) county, runs south-by-southwest for approximately 17 miles from the Santa Lucia mountains to San Luis Bay near the town of Avila Beach. The San Luis Obispo Creek watershed comprises approximately 81 square miles of urban, agricultural, grazing, and undeveloped land. This waterbody is not meeting water quality standards for fecal coliform and was added to the federal Clean Water Act section 303(d) List in 1996. Source analysis indicates that 75% of loading is from human and urban sources, other sources include bird and bat guano originating in a tunnel that passes under the City of San Luis Obispo (SLO), and livestock. A Total Maximum Daily Load (TMDL) project was adopted in 2005 that identified implementation actions, including sewer maintenance, wild animal waste management, and grazing management to achieve the TMDLs by July 25, 2015. Waste Load Allocations (WLAs) and Load Allocations (LAs) are assigned to Cal Poly State University, the City of SLO, and the County of SLO. The TMDL attainment date was not met, and significant improvement is still needed. In 2019, the City revised its Waste Load Allocation Attainment Plan (WLAAP) to include quantitative milestones for achieving WLAs, including management practices to address the sources and a Monitoring Plan to further characterize sources, using microbial source tracking methods. WLAAP milestones will be the basis for issuing a Time Schedule Order to the City of SLO for its failure to meet WLAs as required in the Phase II MS4 Permit.

### San Luis Obispo Creek Watershed Map



### Water Quality Outcomes

- Data do not show reduced fecal coliform levels; additional source control measures are needed.
- 100% of samples from the monitoring station in downtown SLO (station 310SLM) exceed the 200 MPN/100 mL Load Allocation.
- At least 40% of samples collected from each of the other monitoring stations also exceed however, the magnitude of the exceedance is much lower.

### Water Quality

Fecal Coliform Data from Sites on San Luis Obispo Creek

