

CALIFORNIA REGIONAL WATER QUALITY CONTROL BOARD
CENTRAL VALLEY REGION

ORDER R5-2013-0135

AMENDING WASTE DISCHARGE REQUIREMENTS ORDER R5-2013-0065

FOR
NAPA BERRYESSA RESORT IMPROVEMENT DISTRICT
NAPA BERRYESSA WASTEWATER TREATMENT FACILITY
NAPA COUNTY

The California Regional Water Quality Control Board, Central Valley Region (hereafter Central Valley Water Board) finds:

1. On 31 May 2013, the Central Valley Water Board adopted Waste Discharge Requirements (WDRs) Order R5-2013-0065, prescribing requirements for Napa Berryessa Wastewater Treatment Facility (WWTF) in Napa County. Napa Berryessa Resort Improvement District (hereafter "Discharger") owns and operates the WWTF.
2. The WWTF includes a sewer collection system, an activated sludge treatment unit, a chlorine disinfection system, four high density polyethylene geomembrane lined storage Ponds 1 through 4, and a 60-acre spray field. Ponds 2, 3 and 4 are new storage ponds. The disinfected secondary wastewater is applied to the spray field.
3. The Discharger proposes to make major improvements to the WWTF, including replacement of manual bar screen with a rotary drum screen, replacement of the activated sludge treatment unit with a membrane bioreactor package treatment system, construction of a concrete sludge drying bed, and expansion of Pond 1.

Proposed WDRs Amendment

4. Approximately six acres of oak woodland were removed for the construction and expansion of the storage ponds. The removed oak woodland represents riparian habitat and habitat connectivity to upstream and downstream resources. Tree replacement is required to meet requirements of California Department of Fish and Wildlife, Bureau of Reclamation, Army Corps of Engineers, and California Environment Quality Act. To mitigate the tree loss, oak trees will be replanted on the property (Oak Tree Mitigation Areas) as shown on Attachment D, which is attached hereto and made part of this Order by reference.
5. On 30 May 2013, the Discharger proposed to use disinfected secondary effluent for irrigation of the new trees at the Oak Tree Mitigation Areas. Subsurface drip irrigation is proposed to minimize the potential for surface runoff from the mitigation areas. Irrigation will be required during the summer months during a normal precipitation year for approximately three years until the trees are established. However, some irrigation may be required at other times of the year if rainfall is low.

6. California Code of Regulations, title 22, section 60303, states that the requirements set forth in the Water Recycling Criteria chapter of Title 22 do not apply to the use of recycled water onsite at a water recycled plant, or wastewater treatment plant, provided that public access to the area of onsite recycled water is restricted.

California Environment Quality Act

7. The action to amend WDRs Order R5-2013-0065 is exempt from the provisions of Chapter 3 of the California Environmental Quality Act (CEQA) (Pub. Resources Code, § 21000 et seq.) because it involves no significant changes to the facility and is consistent with the existing Use Permit (Cal. Code Regs, tit. 14, § 15301).

Public Notice

8. The Central Valley Water Board has notified the Discharger and interested agencies and persons of its intent to amend waste discharge requirements for this discharge and has provided them with an opportunity for a public hearing and an opportunity to submit their written views and recommendations.
9. The Central Valley Water Board, in a public meeting, heard, and considered all comments pertaining to the discharge.

IT IS HEREBY ORDERED that, pursuant to sections 13263 and 13267 of the California Water Code, Order R5-2013-0065 is amended solely to change the Land Application Area Specifications. Napa Berryessa Resort Improvement District, its agents, successors, and assigns, in order to meet the provisions contained in Division 7 of the California Water Code and regulations adopted there under, shall comply with amended Order R5-2013-0065 as follows:

1. Section G. shall be retitled as "Land Application Area Specifications."
2. The following shall be inserted after the Section G. title:

Requirements G.1. through G.10. below apply only to the spray field LAAs.

3. The following shall be inserted in Section G:

G.11. The following requirements apply to the Oak Tree Mitigation Areas shown on Attachment D:

- a. The Oak Tree Mitigation Areas shall be irrigated by the subsurface drip system only;*
- b. Vegetation (e.g., native grasses and trees) shall be grown in the oak tree mitigation areas.*

- c. *Mitigation areas shall be inspected as frequently as necessary to ensure continuous compliance with the requirements of this Order.*
 - d. *The generation of irrigation runoff (tailwater) is prohibited.*
 - e. *Discharge to the mitigation areas shall not be performed during rainfall or when the ground is saturated.*
4. Attachment D shall be incorporated into Order R5-2013-0065.

Any person aggrieved by this action of the Central Valley Water Board may petition the State Water Board to review the action in accordance with Water Code section 13320 and California Code of Regulations, title 23, sections 2050 and following. The State Water Board must receive the petition by 5:00 p.m., 30 days after the date of this Order, except that if the thirtieth day following the date of this Order falls on a Saturday, Sunday, or state holiday, the petition must be received by the State Water Board by 5:00 p.m. on the next business day. Copies of the law and regulations applicable to filing petitions may be found on the Internet at:

http://www.waterboards.ca.gov/public_notices/petitions/water_quality

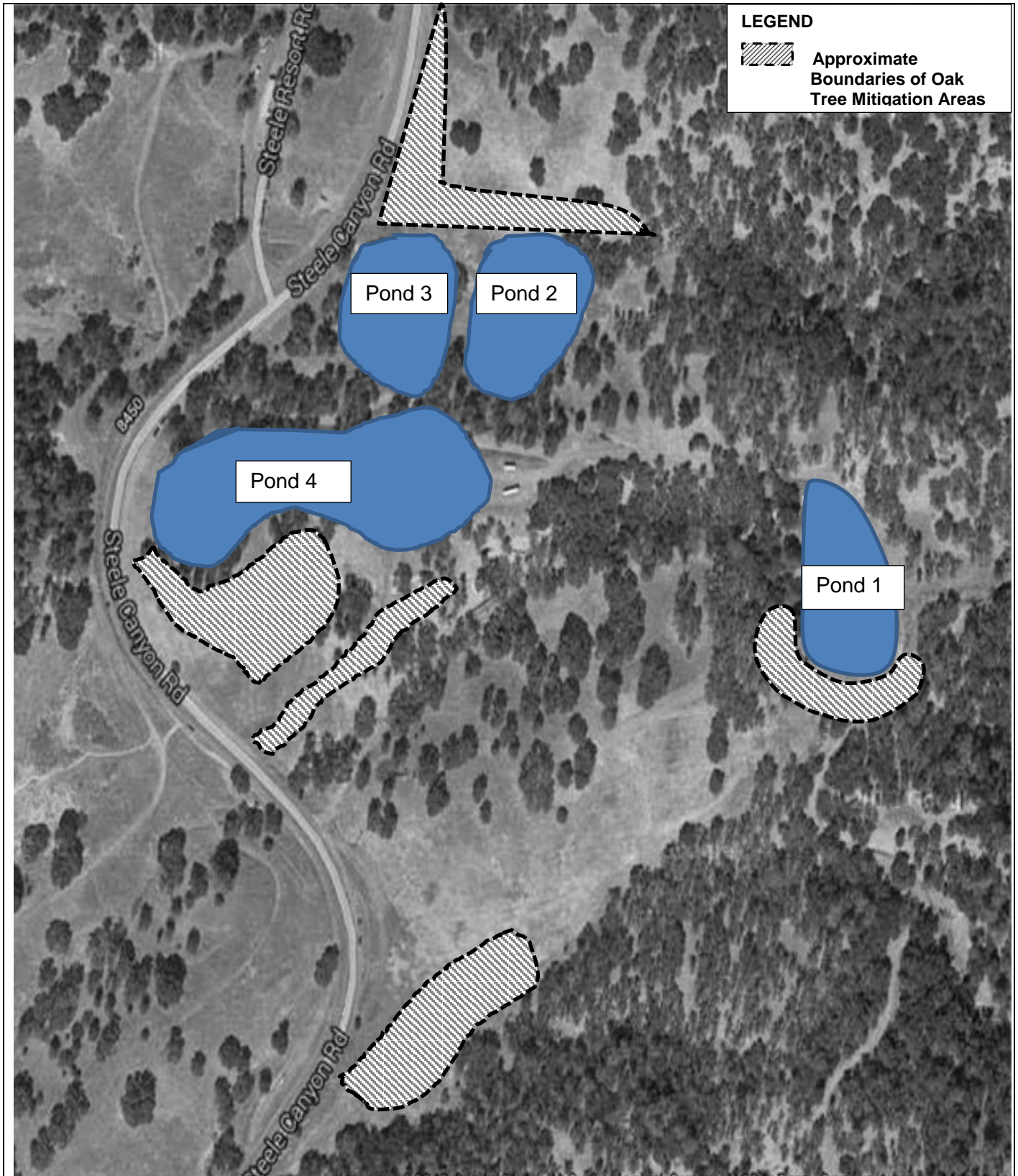
or will be provided upon request.

This Order is effective as of the date of adoption.

I, PAMELA C. CREEDON, Executive Officer, do hereby certify the foregoing is a full, true, and correct copy of an Order adopted by the California Regional Water Quality Control Board, Central Valley Region, on 4 October 2013.


- Original signed by Kenneth Landau for -

PAMELA C. CREEDON, Executive Officer



Drawing Reference:
Google Map

OAK TREE AND VEGETATION MITIGATION AREAS
NAPA BERRYESSA RESORT IMPROVEMENT DISTRICT
WASTEWATER TREATMENT FACILITY
NAPA COUNTY


Not to Scale