

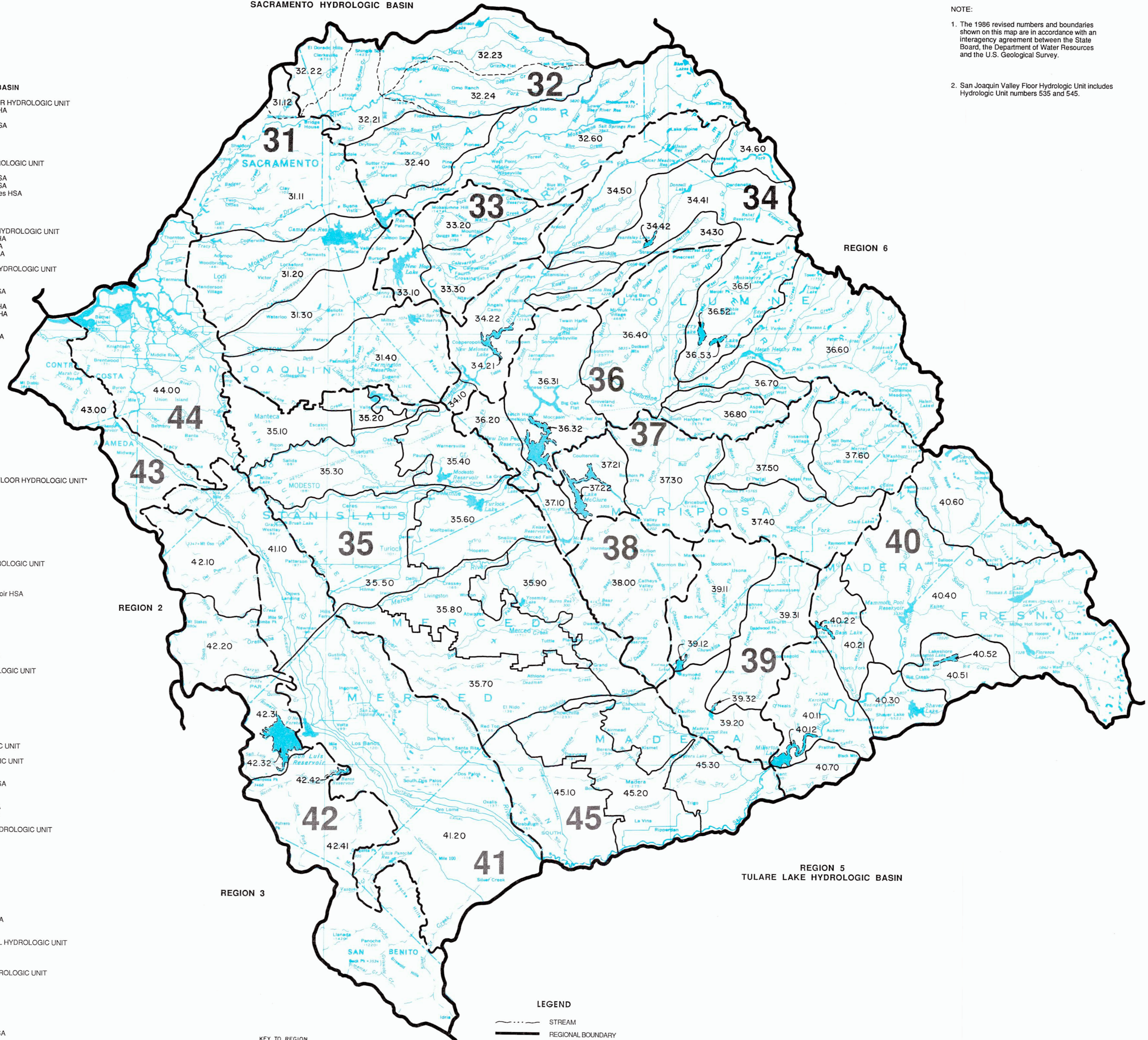
# San Joaquin Hydrologic Basin Planning Area Map

## REGION 5 INDEX SAN JOAQUIN HYDROLOGIC BASIN

- 531.00 NORTH VALLEY FLOOR HYDROLOGIC UNIT
- 531.10 Lower Cosumnes-Dry HA
- 31.11 Herald HSA
- 31.12 Lower Deer Creek HSA
- 531.20 Lower Mokelumne HA
- 531.30 Lower Calaveras HA
- 531.40 Duck-Littlejohns HA
- 532.00 MIDDLE SIERRA HYDROLOGIC UNIT
- 532.20 Cosumnes HA
- 32.21 Big Canyon Creek HSA
- 32.22 Upper Deer Creek HSA
- 23.23 North Fork Cosumnes HSA
- 23.24 Omo Ranch HSA
- 532.40 Sutter Creek HA
- 532.60 Upper Mokelumne HA
- 533.00 UPPER CALAVERAS HYDROLOGIC UNIT
- 533.10 New Hogan Reservoir HA
- 533.20 North Fork Calaveras HA
- 533.30 South Fork Calaveras HA
- 534.00 STANISLAUS RIVER HYDROLOGIC UNIT
- 534.10 Table Mountain HA
- 534.20 Copperopolis HA
- 34.21 New Melones Res HSA
- 34.22 Angels Camp HSA
- 534.30 South Fork Stanislaus HA
- 534.40 Middle Fork Stanislaus HA
- 34.41 Dardanelle HSA
- 34.42 Beardsley Lake HSA
- 534.50 North Fork Stanislaus HA
- 534.60 Clark Fork HA
- 535.00 SAN JOAQUIN VALLEY FLOOR HYDROLOGIC UNIT\*
- 535.10 Manteca HA
- 535.20 Valley Home HA
- 535.30 Riversbank HA
- 535.40 Warnersville HA
- 535.50 Turlock HA
- 535.60 Montpelier HA
- 535.70 El Nido-Stevinson HA
- 535.80 Merced HA
- 535.90 Fahr Creek HA
- 536.00 TUOLUMNE RIVER HYDROLOGIC UNIT
- 536.20 Vizard Creek HA
- 536.30 Big Oak Flat HA
- 36.31 Sonora HSA
- 36.32 New Don Pedro Reservoir HSA
- 536.40 Clavey River HA
- 536.50 Cherry Creek HA
- 36.51 Merced Peak HSA
- 36.52 Cherry Lake HSA
- 36.53 Lake Eleanor HSA
- 536.60 Hetch Hetchy HA
- 536.70 Middle Tuolumne HA
- 536.80 South Fork Tuolumne HA
- 537.00 MERCED RIVER HYDROLOGIC UNIT
- 537.10 Kassenbaum Flats HA
- 537.20 Buckhorn Peak HA
- 37.21 Coulterville HSA
- 37.22 Lake McClure HSA
- 537.30 North Fork Merced HA
- 537.40 South Fork Merced HA
- 537.50 Yosemite HA
- 537.60 Mount Starr King HA
- 538.00 MARIPOSA HYDROLOGIC UNIT
- 539.00 AHWAHNEE HYDROLOGIC UNIT
- 539.10 Chowchilla River HA
- 39.11 Chapman Creek HSA
- 39.12 Buchanan Reservoir HSA
- 539.20 Daulton HA
- 539.30 Fresno River HA
- 39.31 Coarse Gold Creek HSA
- 39.32 Henstley Reservoir HSA
- 540.00 SAN JOAQUIN RIVER HYDROLOGIC UNIT
- 540.10 Auberry HA
- 40.11 Fine Gold Creek HSA
- 40.12 Millerton Lake HSA
- 540.20 North Fork HA
- 40.21 Wishon HSA
- 40.22 Bass Lake HSA
- 540.30 Redinger HA
- 540.40 Mammoth Pool HA
- 540.50 Lakeshore HA
- 40.51 Big Creek HSA
- 40.52 Huntington Lake HSA
- 540.60 North Fork San Joaquin HA
- 540.70 Little Dry Creek HA
- 541.00 DELTA-MENDOTA CANAL HYDROLOGIC UNIT
- 541.10 Patterson HA
- 541.20 Los Banos HA
- 542.00 MIDDLE WEST SIDE HYDROLOGIC UNIT
- 542.10 Del Puerto Creek HA
- 542.20 Orestimba Creek HA
- 542.30 Pacheco Pass HA
- 42.31 Romero Creek HSA
- 42.32 San Luis Reservoir HSA
- 542.40 Panoche Creek HA
- 42.41 Unknown HSA
- 42.42 Los Banos Reservoir HSA
- 543.00 NORTH DIABLO RANGE HYDROLOGIC UNIT
- 544.00 SAN JOAQUIN DELTA HYDROLOGIC UNIT
- 545.00 SAN JOAQUIN VALLEY FLOOR HYDROLOGIC UNIT\*
- 545.10 Gravelly Fork HA
- 545.20 Madera HA
- 545.30 Berenda Creek HA

\* SAN JOAQUIN VALLEY FLOOR HYDROLOGIC UNIT includes HYDROLOGIC UNIT NUMBERS 535 and 545

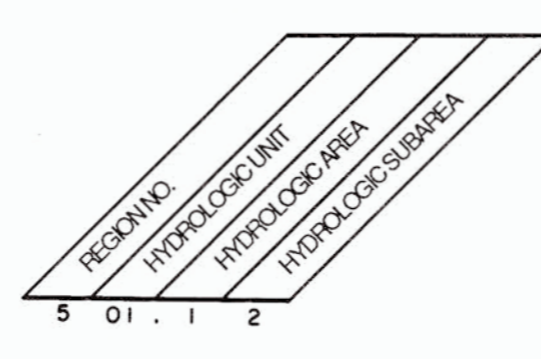
## REGION 5 SACRAMENTO HYDROLOGIC BASIN



**LEGEND**

- STREAM
- REGIONAL BOUNDARY
- HYDROLOGIC UNIT BOUNDARY (HU)
- HYDROLOGIC AREA BOUNDARY (HA)
- HYDROLOGIC SUBAREA BOUNDARY (SA)

**5** HYDROLOGIC UNIT NUMBER



April 1973  
Revised: July 1976  
Revised: August 1986  
State Water Resources Control Board  
Surveillance and Monitoring Section  
T.E. Lavenda, P.E. T.S. ...

NOTE:  
1. The 1986 revised numbers and boundaries shown on this map are in accordance with an interagency agreement between the State Board, the Department of Water Resources and the U.S. Geological Survey.  
2. San Joaquin Valley Floor Hydrologic Unit includes Hydrologic Unit numbers 535 and 545.

State of California  
**REGIONAL WATER QUALITY CONTROL BOARD**  
**Central Valley Region (5)**  
**SAN JOAQUIN HYDROLOGIC BASIN PLANNING AREA (SJ)**