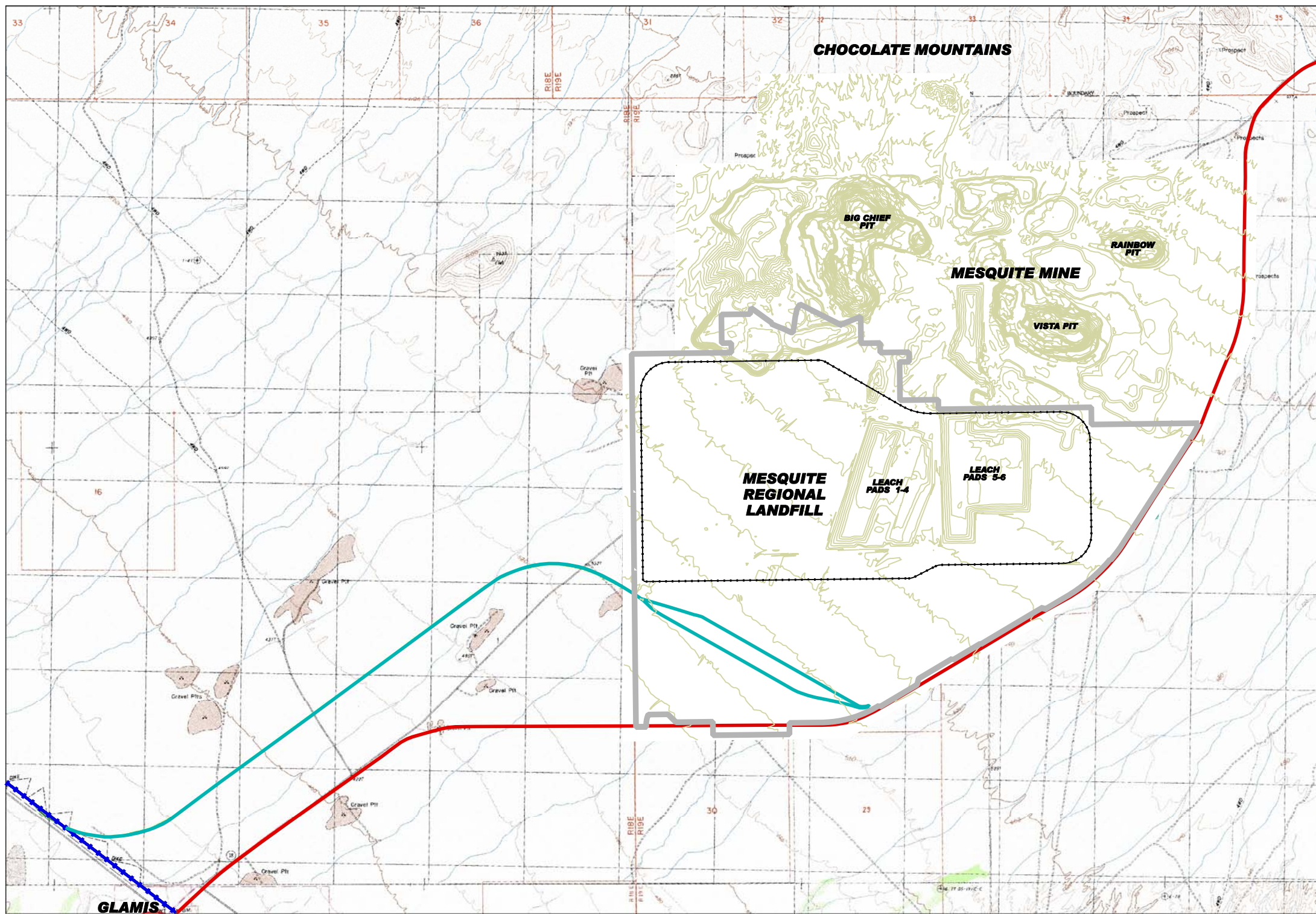





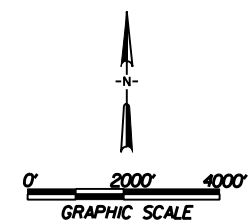


n:\lfm12\mrt\jtd\Revision 0408\dgn\exhibit03020201.dgn



LEGEND

-  PROPERTY LINE
-  PROPOSED LANDFILL FOOTPRINT (2290 ac)
-  PROPOSED RAIL SPUR & YARD
-  UNION PACIFIC RAILROAD
-  HIGHWAY 78



Topography Date: Aug. 2003
Contour Interval: 25'

Source: Sanitation Districts of Los Angeles County, 2008

MESQUITE REGIONAL LANDFILL

Regional Topography

Attachment 4