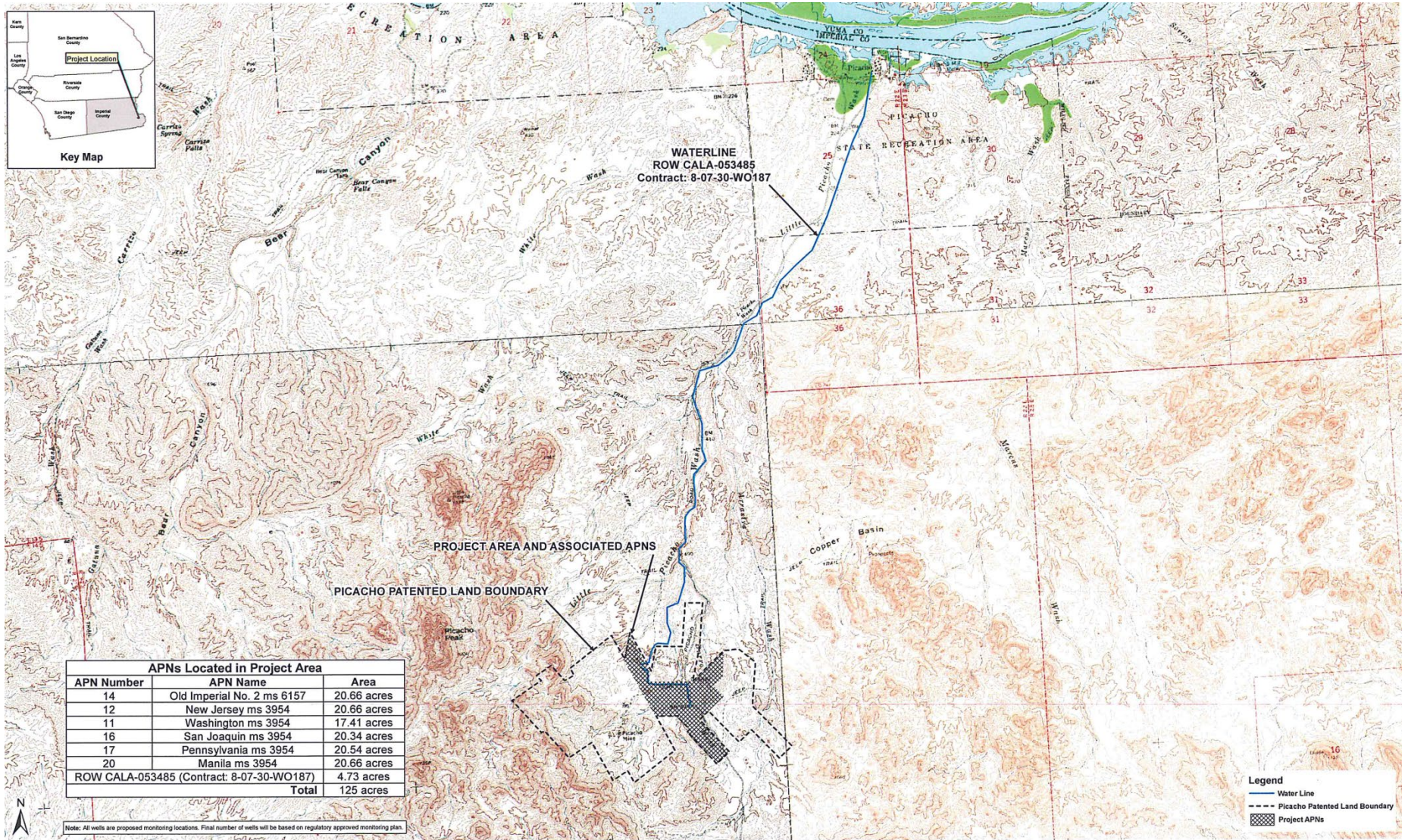


CALIFORNIA REGIONAL WATER QUALITY CONTROL BOARD - COLORADO RIVER BASIN REGION

ATTACHMENT A



**G2 BIO LLC**  
 GREEN SOLUTIONS TODAY FOR A BETTER TOMORROW  
 90 US HIGHWAY 130, BORDENTOWN, NEW JERSEY 08505  
 PHONE 609 298 0770 FAX 609 291 8386

References:  
 California State and County Boundaries, USDA Forest Service - Pacific Southwest Region - Remote Sensing Lab, March 2010; Land Status, Bureau of Land Management, September 26, 2011; Surface Management, Arizona, Bureau of Land Management, December 18, 2012; As Built Survey, Date Stamped Received August 14, 1974 by BLM; USGS Little Picacho Peak (1965), Picacho Peak (1965), Picacho (1964), & Picacho Southwest (1965) Topographic Quadrangle Maps

**Nicholas Lagos**  
 Engineer Contractor to G2 Bio, LLC  
 California Civil P.E. Lic # C70697

4,000 2,000 0 4,000  
 Feet

**SITE LOCATION MAP**  
**LAKE ENTERPRISES, LLC, OWNER,**  
**G2 BIO LLC, OPERATOR,**  
**PICACHO GOLD RECOVERY PROJECT**  
**PICACHO MINE**  
**Imperial County**

**FIGURE 1**

Project # 20014

Drawn By PGN

Reviewed by NL

CALIFORNIA REGIONAL WATER QUALITY CONTROL BOARD - COLORADO RIVER BASIN REGION

ATTACHMENT B

