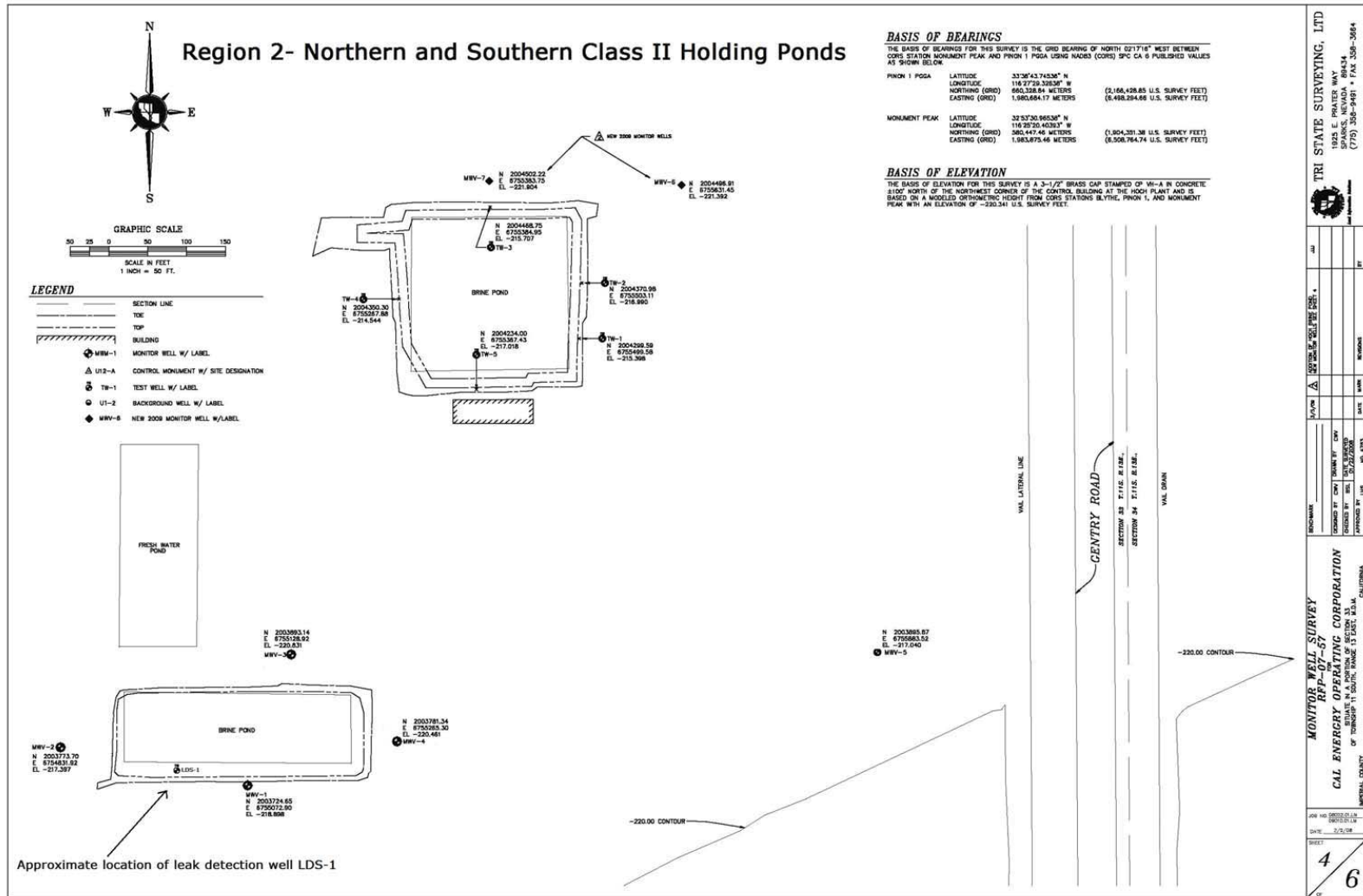


CALIFORNIA REGIONAL WATER QUALITY CONTROL BOARD - COLORADO RIVER BASIN REGION

ATTACHMENT B



MONITORING WELL LOCATIONS
LANDOWNERS: MAGMA POWER COMPANY, VULCAN BN GEOTHERMAL, & IMPERIAL MAGMA LLC
OPERATOR: CALENERGY OPERATING CORPORATION
REGION 2 CLASS II HOLDING PONDS
Salton Sea Known Geothermal Resource Area - Imperial County