





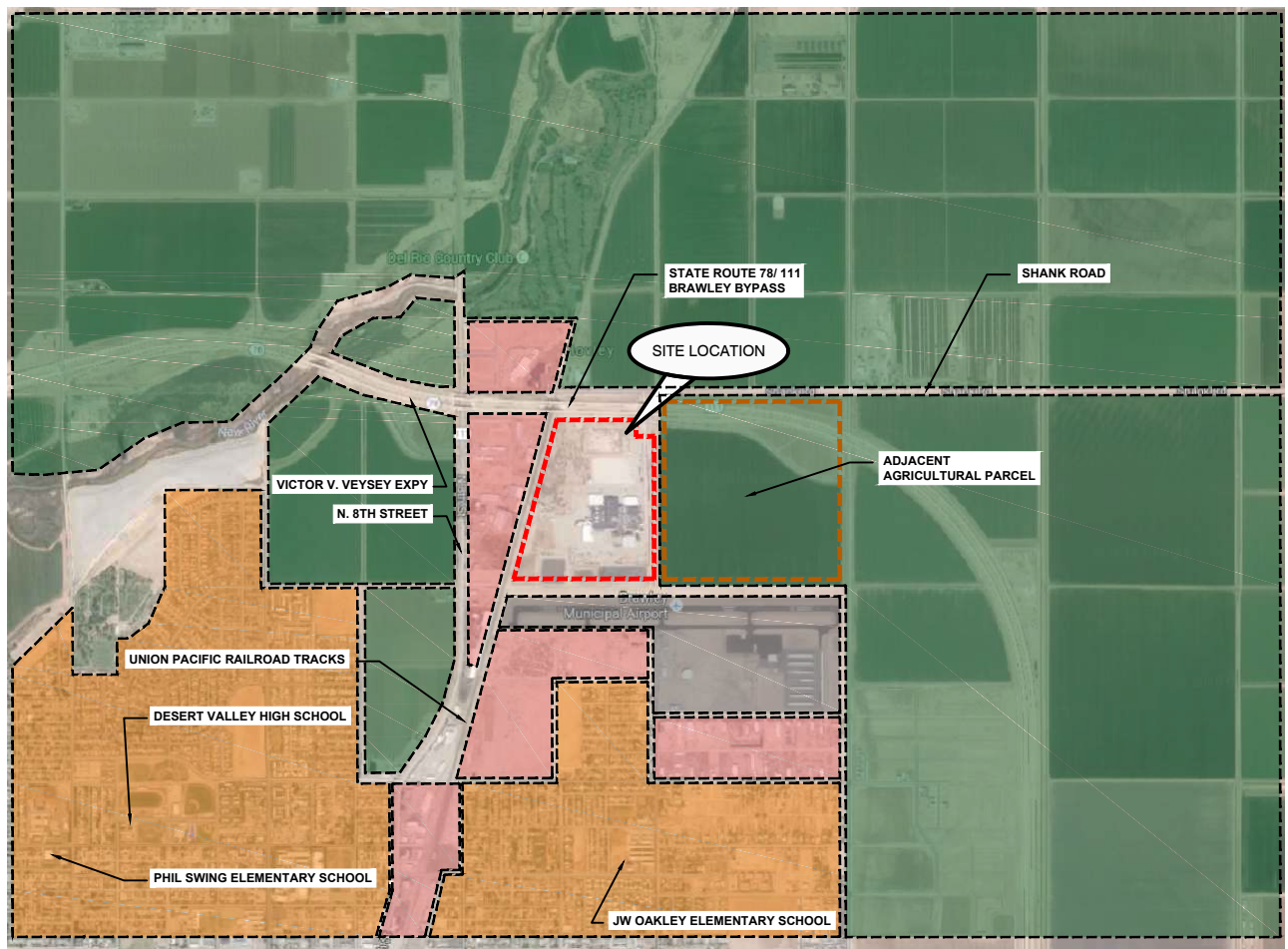


LEGEND

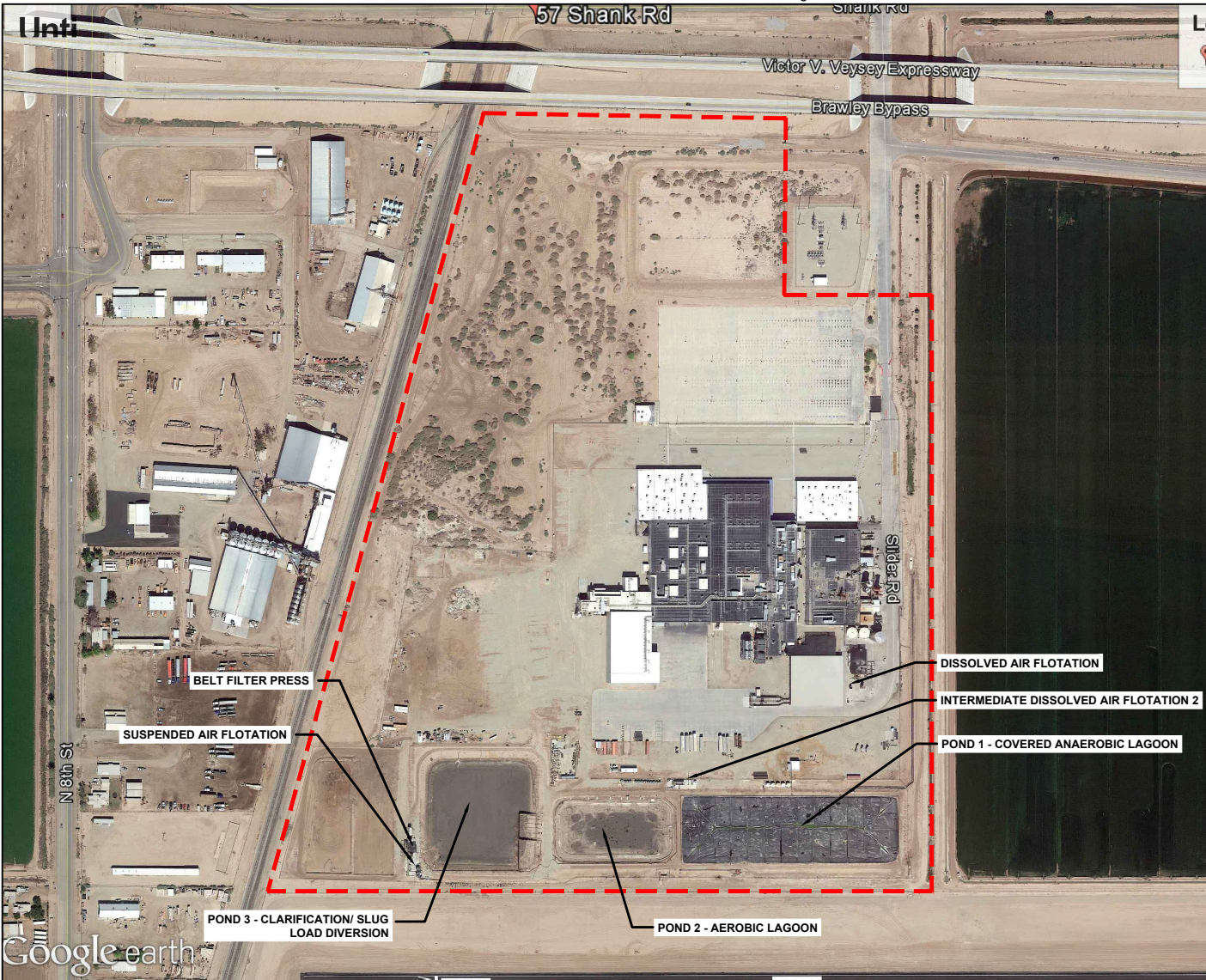
-  SITE BOUNDARY
-  ADJACENT AGRICULTURAL PARCEL
-  AGRICULTURAL LAND
-  RESIDENTIAL PROPERTIES
-  BRAWLEY MUNICIPAL AIRPORT
-  COMMERCIAL AREA



Drawn By: J. Rahmani
 Date: 9/15/2016.
 Project No: 0364807.002-01
 CAD File: G:\DWGS\0364807 One WorldBee\002\0364807002-06.dwg

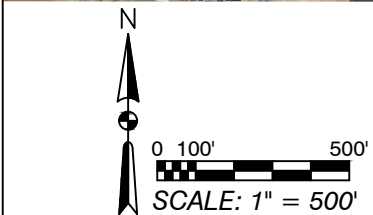
References:
Google Map

Figure 1
Site Location and Surrounding Land Uses
57 East Shank Road
Brawley, Imperial County, California



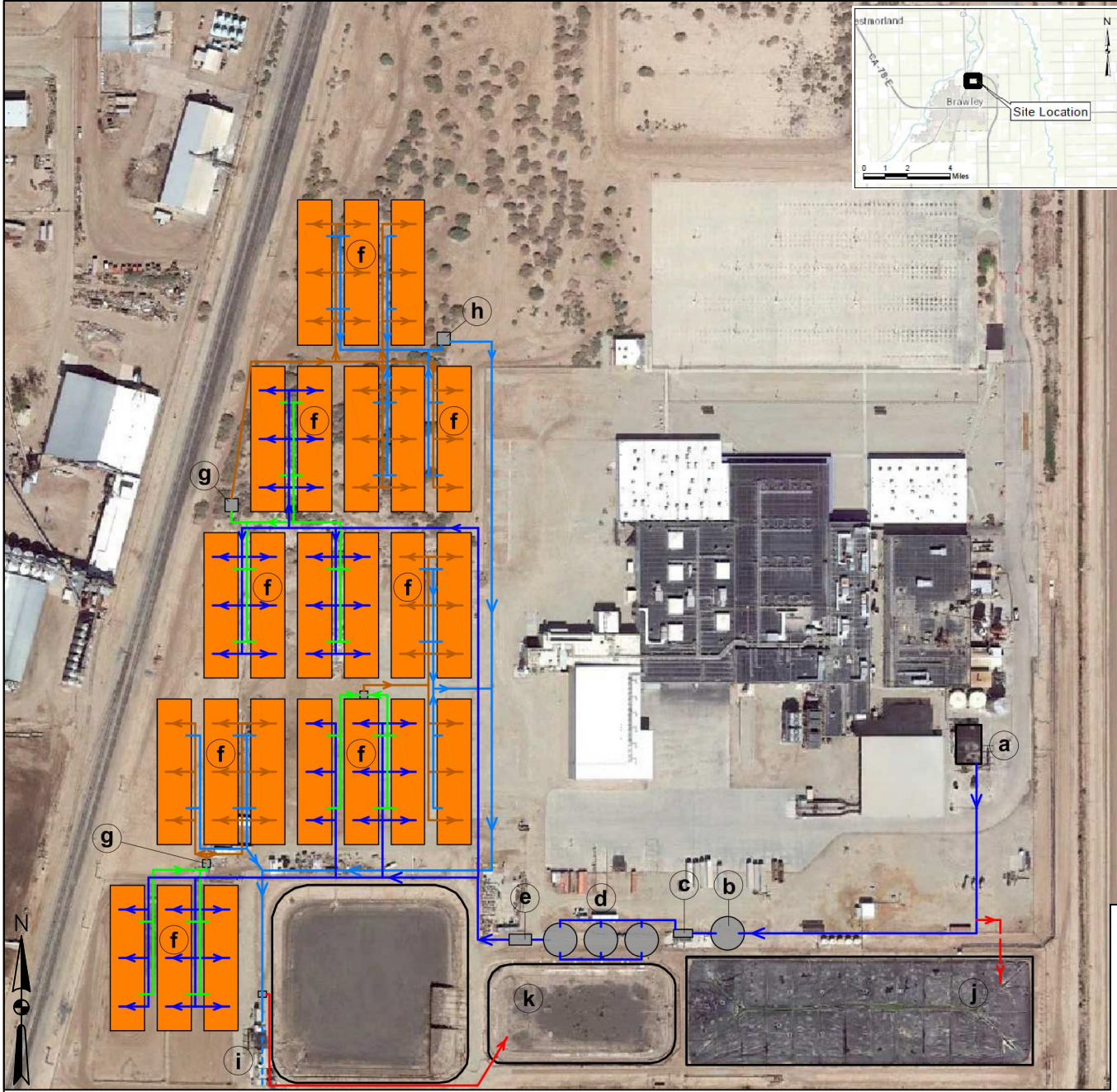
LEGEND

 SITE BOUNDARY



References:
Google Earth

Figure 2
Legacy Wastewater Treatment System Schematic
57 East Shank Road
Brawley, Imperial County, California



TREATMENT SCHEME FOR CITY SEWAGE DISCHARGE, STAGE 3:

- a. DAF 1&2 (existing)
- b. Holding tank, 300,000 G
- c. DAF 3
- d. Holding tanks, 3 units, 300,000 G each
- e. Pumping
- f. Biofiltro stage 3, 24 modules, 800,000 GPD
- g. Holding tanks and pumping between 1st and 2nd passing
- h. Treated water tanks and pumping
- i. Treated water discharge to city sewage system (existing)
- j. Pond 1: emergency buffer capacity for DAF effluent (existing)
- k. Pond 2: emergency buffer capacity for treated effluent (existing)

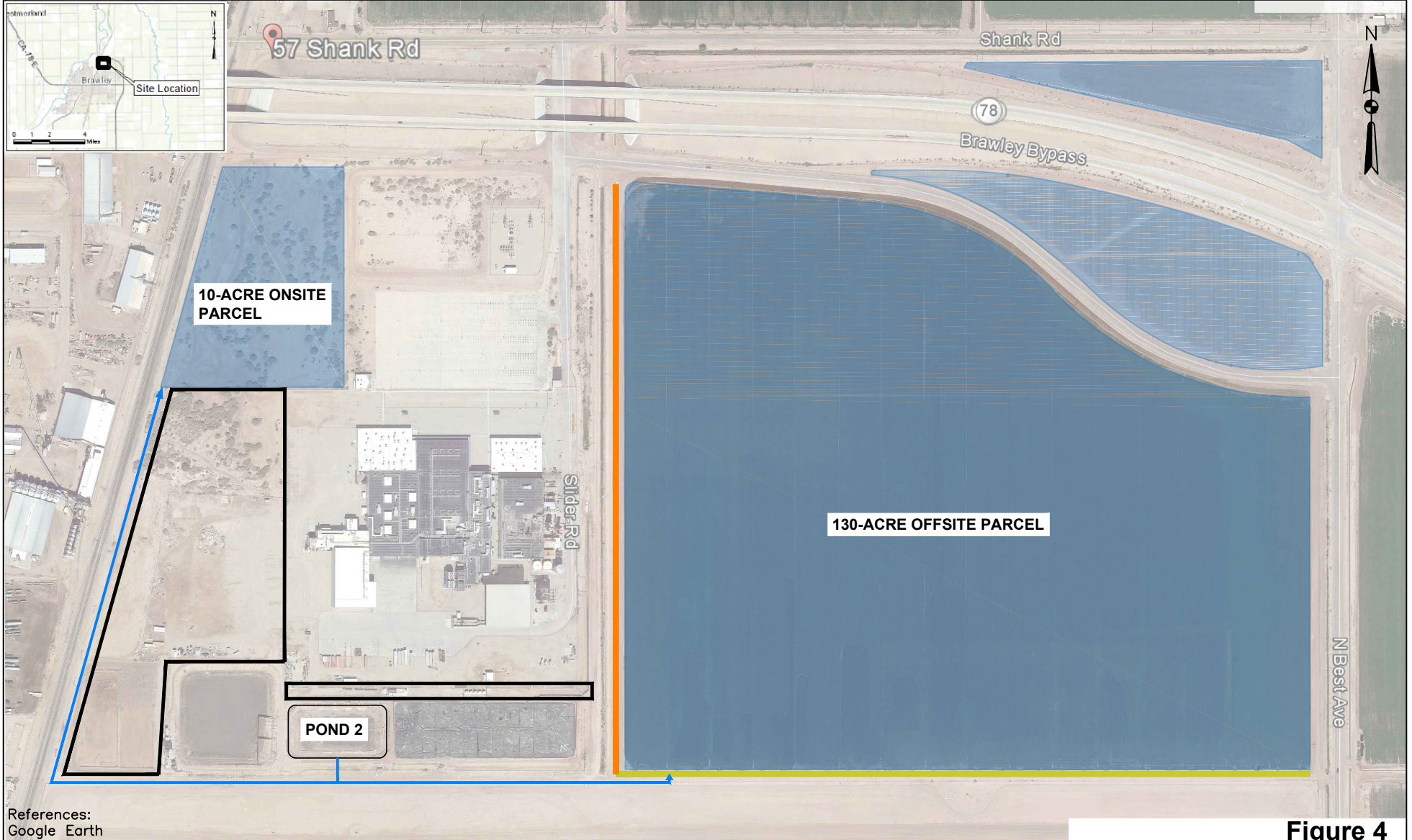
PIPELINES:

- Pretreatment and 1st passing pumping
- Drainage from 1st passing and discharge to holding tanks
- 2nd passing pumping
- Drainage from 2nd passing and discharge to pond
- Drainage to emergency holding

References:
Google Earth






0 200' 400'
SCALE: 1" = 400'

Figure 3
Proposed BioFiltro Wastewater Treatment System Schematic
57 East Shank Road
Brawley, Imperial County, California



References:
Google Earth

LEGEND

-  BIOFILTRATION SYSTEM FOOTPRINT
-  OAKLEY CANAL
-  PRIVATE IRRIGATION CANAL
-  PROPOSED PIPELINE
-  DISCHARGE TO LAND


0 100' 500'

SCALE: 1" = 500'

Figure 4
Discharge Distribution Map
57 Shank Road
Brawley, Imperial County, California