

Disappointing El Niño: 5th Year of Drought



New Melones Reservoir (August 2015)

Statewide Drought Conditions

**Official State of
Emergency Declared on
January 17, 2014**

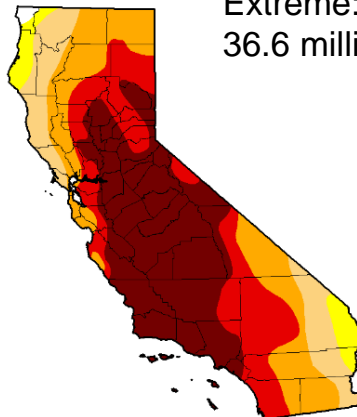
**Local Emergencies
Declared**

- 29 Counties
- 13 Cities
- 9 Tribal Reservations
- 12 Special Districts

**County & Tribal Drought
Task Force**

- 33 Counties
- 7 Tribes

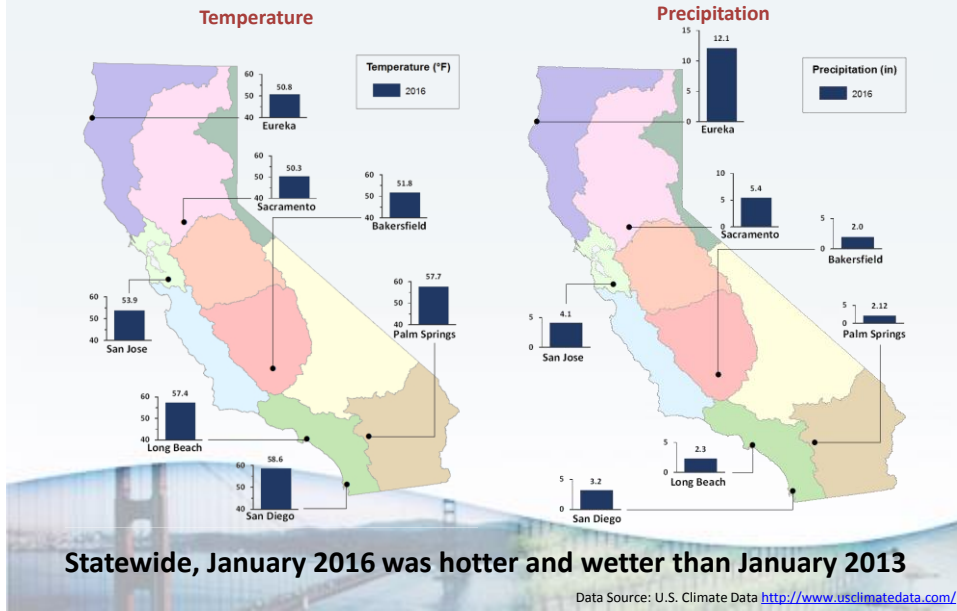
Exceptional: 38%
Extreme: 61%
36.6 million people



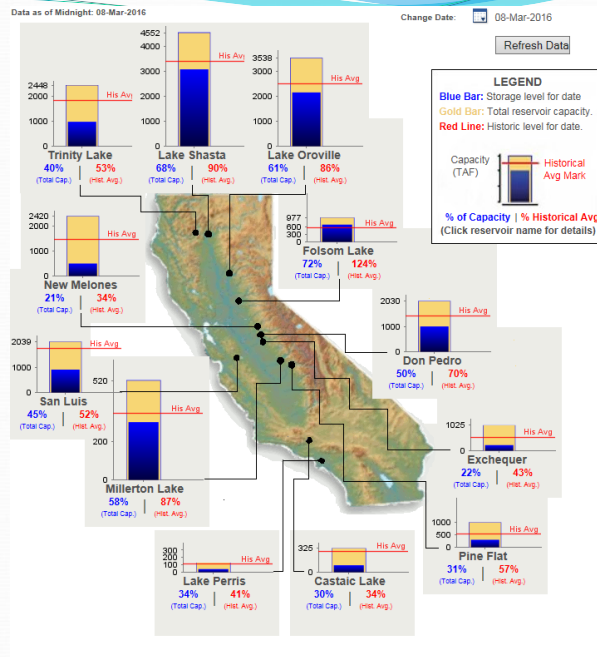
Intensity:
 D0 - Abnormally Dry
 D1 - Moderate Drought
 D2 - Severe Drought
 D3 - Extreme Drought
 D4 - Exceptional Drought

United States Drought Monitor
March 1, 2016

January Weather Conditions (Select Cities)



Low Reservoir Levels



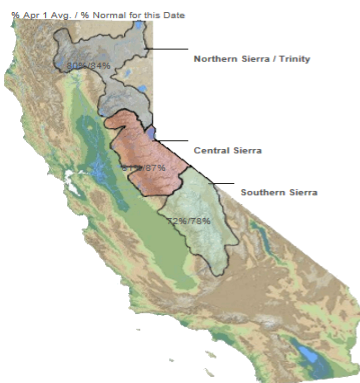
Southern California Reservoir Storage

Reservoir	Capacity (TAF)	Avg. Storage (TAF)	Current Storage (TAF)	% of Capacity	% Mo. Avg	Notes
Crowley	183	123	115	62%	93%	EOJ
Diamond Vly	800	558	315	39%	57%	As of J16
Mathews	179	139	166	92%	119%	EOJ
Castaic	325	281	83	26%	30%	EOF
Pyramid	180	162	167	93%	103%	EOF
Perris	131	110	45	34%	41%	EOF
Total	1,799	1,373	891	50%	65%	

Snow Water Equivalents

Snow Water Equivalents (inches)

Provided by the California Cooperative Snow Surveys
Data For: 09-Mar-2016



Change Date:

NORTH

Data For: 09-Mar-2016
Number of Stations Reporting: 27
Average snow water equivalent: 22.8"
Percent of April 1 Average: 80%
Percent of normal for this date: 84%

CENTRAL

Data For: 09-Mar-2016
Number of Stations Reporting: 40
Average snow water equivalent: 23.4"
Percent of April 1 Average: 81%
Percent of normal for this date: 87%

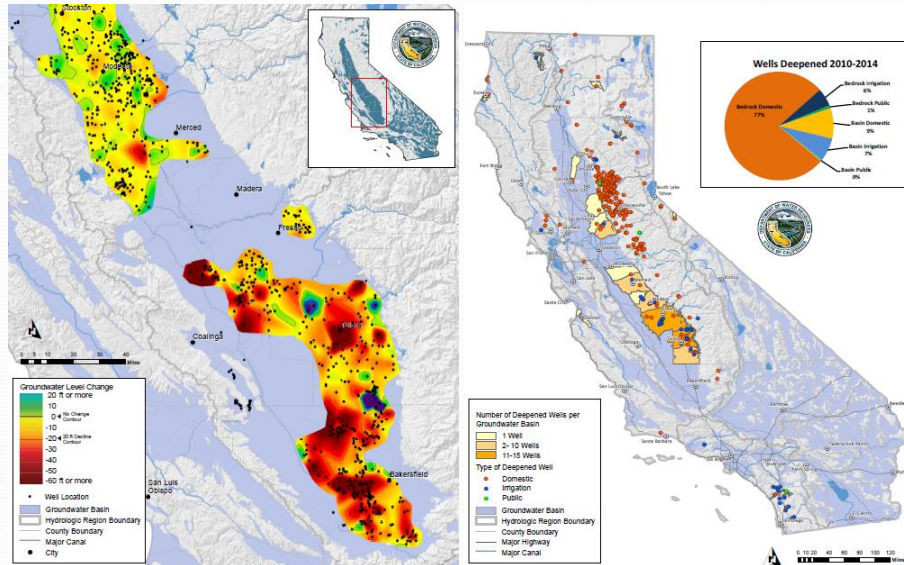
SOUTH

Data For: 09-Mar-2016
Number of Stations Reporting: 29
Average snow water equivalent: 19.2"
Percent of April 1 Average: 72%
Percent of normal for this date: 78%

STATEWIDE SUMMARY

Data For: 09-Mar-2016
Number of Stations Reporting: 96
Average snow water equivalent: 21.0"
Percent of April 1 Average: 73%
Percent of normal for this date: 83%

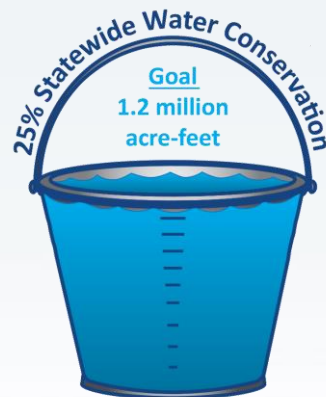
Low Groundwater Levels



Statewide Water Conservation Cumulative Savings

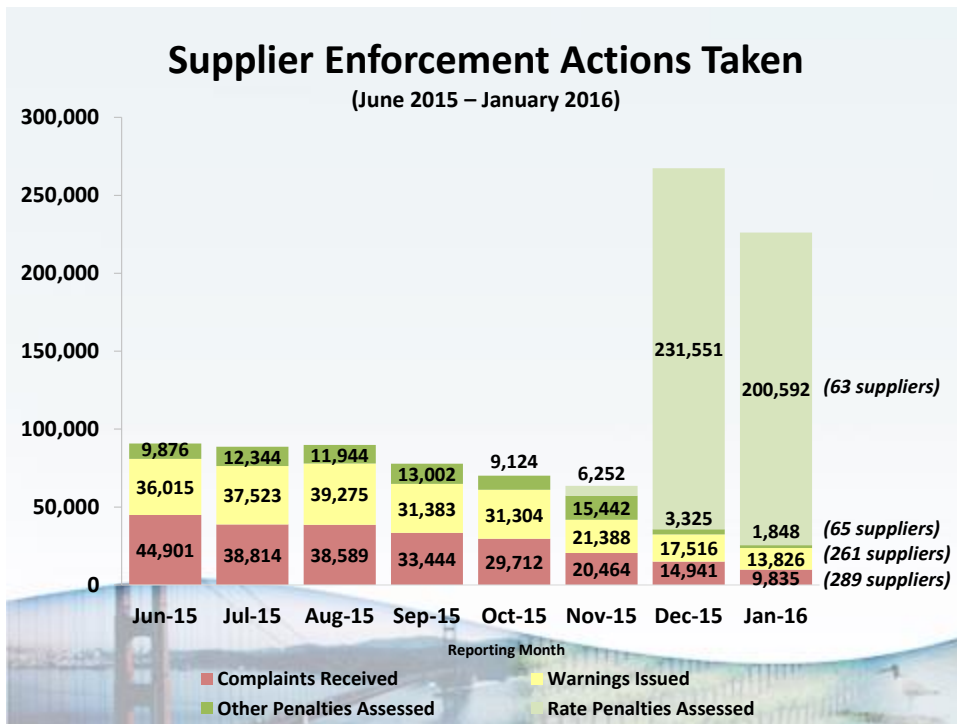
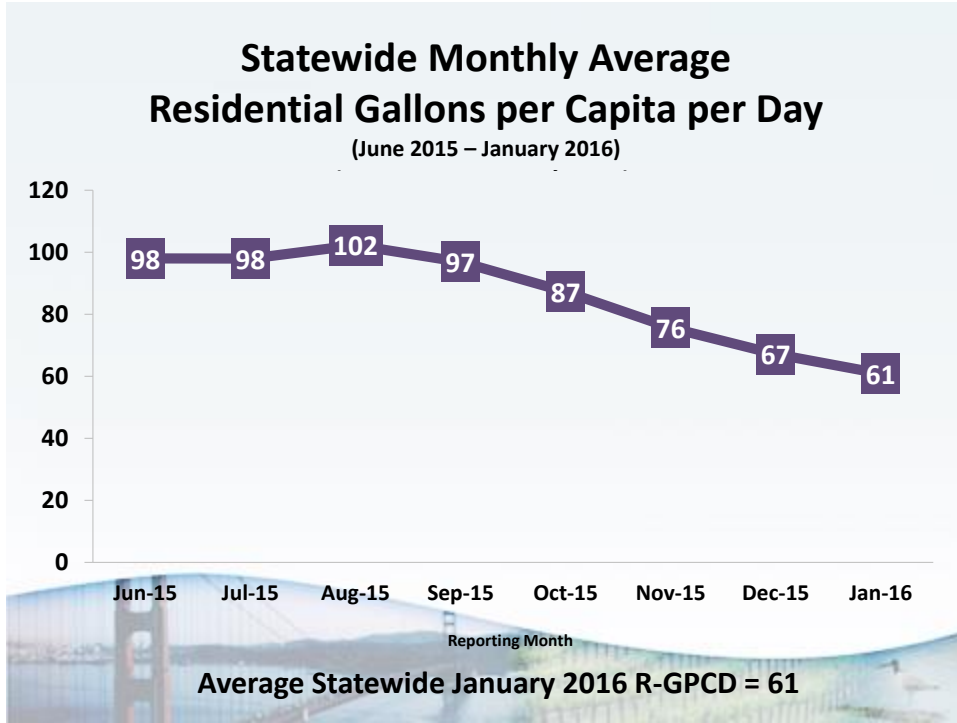
(June 2015 – January 2016)

- 1,147,672 acre-feet (374.0 billion gallons) of water saved
- This is 96% of savings goal
- Savings is enough to provide 5.7 million Californians with water for one year



1,147,672 acre-feet
saved from June 2015 - Jan. 2016





Water Board Enforcement Actions since June 2015

Urban Water Suppliers

- Office of Enforcement has issued:
 - 97 Warning Letters
 - 117 Notices of Violation
 - 7 Alternative Compliance Orders
 - 12 Conservation Orders
 - 4 Administrative Civil Liability Complaints



February 2016 Emergency Regulation

- Adjusted conservation standards take effect March 1st
- Created conservation standard adjustments to consider:
 - Climate differences throughout the state
 - Urban growth
 - Investments in new, local, drought-resilient sources of water supply
- Conservation standard adjustment data are due to State Water Board by March 15th



San Joaquin Region Water Conservation

January 2016 Water Conservation, San Joaquin Region

Supplier Name	Conservation Standard	Cumulative % Savings	Monthly % Savings	Water Use R-GPCD	Population Served
CA Water Service Company Bakersfield	32%	31.1%	14.5%	75	279,621
Fresno	28%	26.2%	18.2%	56	520,159
Hanford *	28%	13.9%	9.0%	82	57,050
Lemoore **	32%	22.1%	5.7%	81	25,281
Merced	36%	38.0%	25.0%	81	83,400
Riverbank ***	32%	7.8%	-51.7%	72	23,298
Vaughn Water Company	36%	26.6%	18.3%	124	31,105

* UNDER CONSERVATION ORDER

** UNDER ALTERNATIVE COMPLIANCE ORDER

*** "supplier of concern"



Region 8 Water Conservation

January 2016 Water Conservation, Region 8 Suppliers

Supplier Name	Conservation Standard	Cumulative % Savings	Monthly % Savings	Water Use R-GPCD	Population Served
Anaheim	20%	22.6%	23.4%	57	360,142
Eastern Municipal Water District	28%	19.2%	26.5%	56	548,862
Golden State Water Company Claremont	32%	37.4%	29.0%	75	37,160
Irvine Ranch Water District	16%	16.3%	5.2%	60	388,319
Lake Hemet Municipal Water District	28%	39.4%	39.5%	71	52,914
Ontario	24%	21.2%	19.0%	61	168,777
Seal Beach	8%	16.9%	11.6%	40	25,561



Region 6 Water Conservation

January 2016 Water Conservation, Region 6 Suppliers

Supplier Name	Conservation Standard	Cumulative % Savings	Monthly % Savings	Water Use R-GPCD	Population Served
		<i>June 2015 - January 2016</i>	<i>January 2016</i>		
Adelanto*	20%	12.5%	6.3%	61	32,543
Golden State Water Company Barstow	24%	22.2%	17.3%	58	31,209
Mammoth Community Water District	20%	29.9%	14.2%	47	16,739
Palmdale Water District	32%	25.7%	21.6%	61	116,359
Phelan Pinon Hills Community Services District*	32%	17.7%	32.5%	49	25,160
South Tahoe Public Utilities District	20%	18.9%	24.9%	41	33,124
Victorville Water District	28%	24.1%	23.7%	64	126,388

* UNDER CONSERVATION ORDER



Water Conservation Regulation- Next Steps

- Staff will release final revised conservation standards in early April
- Staff continue to track drought conditions and will report to the Board in April
- Staff are working with stakeholders on concepts for next steps



Human Right to Water Resolution

- Establishes human right to safe, clean, affordable & accessible water as Water Boards core value
- Adopted February 16, 2016



Human Right to Water Resolution

1. Establishes HRTW as core value
2. Requires consideration of HRTW in actions and description of how considered
3. Requires Board to collect data to track and identify
4. Requires Board to develop performance measures
5. Requires meaningful stakeholder engagement
6. Directs staff to incentivize regional approaches
7. Requires Annual Report



Prop 1 - \$7.5 Billion



- Storage
- IRWM
- Water use Efficiency and Recycling
- Groundwater Cleanup/Management
- Safe Drinking Water
- Watershed Restoration
- Stormwater Grant Program

