

## Map Grid Index

## LEGEND:

- Groundwater Monitoring Well
- Agricultural Supply Well
- ⊕ Domestic Supply Well
- Other Supply Well
- Groundwater Extraction Well (Active)
- ⊕ Multiuse Test Well, or Inactive Extraction/Injection Well
- ▲ Inactive In Situ Reactive Zone Injection Well
- ◆ Freshwater Injection Well
- PG&E-Owned Property
- PG&E Compressor Station
- County Parcel
- Transmission Line
- Approximate Limit of Saturated Alluvium Upper Aquifer (Dashed Where Inferred)
- Approximate Location of Lockhart Fault; Fault Trace is Inferred, and There is No Surface Expression (Stamos et al. 2001)
- Bedrock Exposed at Ground Surface
- See Footnote 3.
- Approximate Outline of Cr(VI) or Cr(T) in Upper Aquifer Exceeding Values of 3.1 and 3.2 µg/L, Respectively, First Quarter 2017
- Approximate 10 µg/L Outline of Cr(VI) or Cr(T) Concentrations in Upper Aquifer, First Quarter 2017
- Approximate 50 µg/L Outline of Cr(T) Concentrations in Upper Aquifer, First Quarter 2017
- Approximate 1,000 µg/L Outline of Cr(VI) or Cr(T) Concentrations in Upper Aquifer, First Quarter 2017

### MW-177D Well ID

- 1.5/2.7 Cr(VI)/Cr(T) concentrations in µg/L; maximum of primary and duplicate samples during First Quarter 2017 sampling.
- (1.8/2.2) Data in parentheses are from previous reporting period. See Table E-1 for sample dates.

### Groundwater Cr(VI) Concentrations in Monitoring Wells:

- More than 1,000 µg/L
- 10 to 50 µg/L
- 100 to 1,000 µg/L
- 3.1 to 10 µg/L
- 50 to 100 µg/L
- Less than 3.1 µg/L or ND

### ABBREVIATIONS:

- µg/L Micrograms per Liter  
CAO Cleanup and Abatement Order  
Cr(VI) Hexavalent Chromium  
Cr(T) Total Dissolved Chromium  
J Estimated Result  
ND Not Detected  
NS Not Sampled

### NOTES:

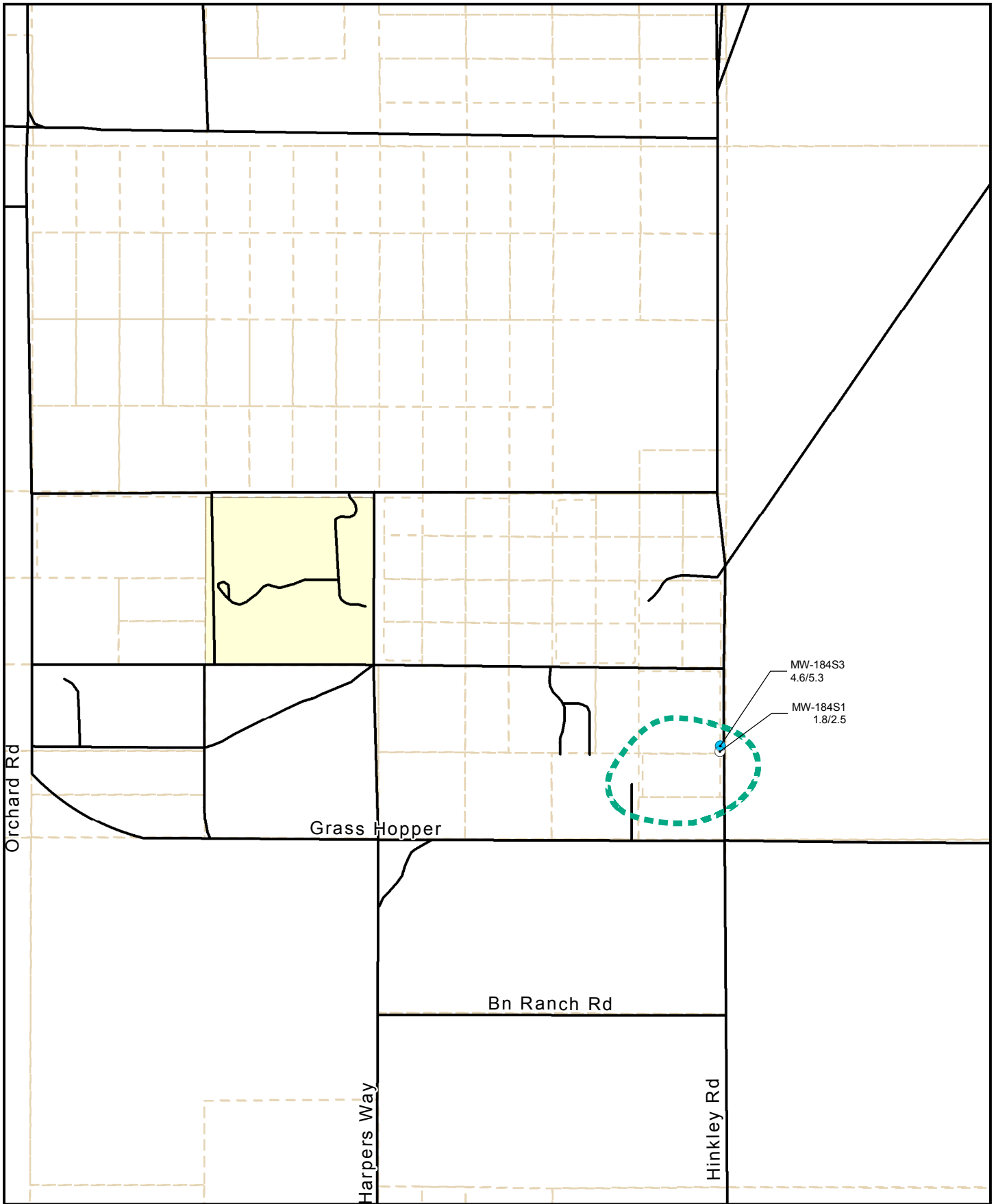
- Chromium results are shown for Site-wide Groundwater Monitoring Program and domestic wells sampled in the First Quarter (January through March) 2017 monitoring period. For wells sampled multiple times during the reporting period, the most recent results are shown.
- The concentration contours are based on First Quarter 2017 chromium results for the groundwater monitoring and extraction wells that are completed in the shallow zone and deep zone of the Upper Aquifer as noted on Figures 5-1 and 5-2. Results for domestic wells (brown-colored labels) were not used for chromium plume contouring, except for those in the northern disputed plume areas, pursuant to the Lahontan Regional Water Quality Control Board's Cleanup and Abatement Order dated November 4, 2015.
- Pursuant to the Lahontan Regional Water Quality Control Board's Cleanup and Abatement Order dated November 4, 2015, groundwater monitoring wells are not used for chromium contouring if they are located in the areas southwest of the Lockhart Fault and on or east of Dixie Road. Monitoring wells sampled southwest of Lockhart Fault and east of Dixie Road were sampled in support of United States Geological Survey background chromium investigations.
- Chromium plume contours in the general area south of Highway 58, were developed using a larger set of monitoring data which is presented in the the April 28, 2017 First Quarter 2017 Monitoring Report for the In Situ Reactive Zone and Northwest Freshwater Injection Projects (Arcadis 2017). Select wells from that program are shown here for reference.
- Chromium contours were changed on the eastern side of the plume during the Third Quarter of 2016. These changes were made based on discussions with the Water Board, requirements in the Order and professional judgement. These changes to the plume contours on the eastern side of the plume reflect a revised interpretation of monitoring data and do not indicate plume expansion.

### WORKS CITED:

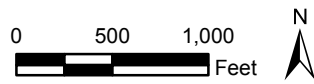
Arcadis. 2017. First Quarter 2017 Monitoring Report for the In Situ Reactive Zone and Northwest Freshwater Injection Projects, Pacific Gas and Electric Company, Hinkley Compressor Station, Hinkley, California, California Regional Water Quality Control Board, Lahontan Region Order No. R6V-2008-0014 (Waste Discharge Requirements Identification No. 6B369107001). April 28.

Stamos, C.L., P. Martin, T. Nishikawa, and B.F. Cox. 2001. *Simulation of Ground-Water Flow in the Mojave River Basin, California*. U.S. Geological Survey Water-Resources Investigations Report 01-4002, Version 3. Prepared in cooperation with the Mojave Water Agency.

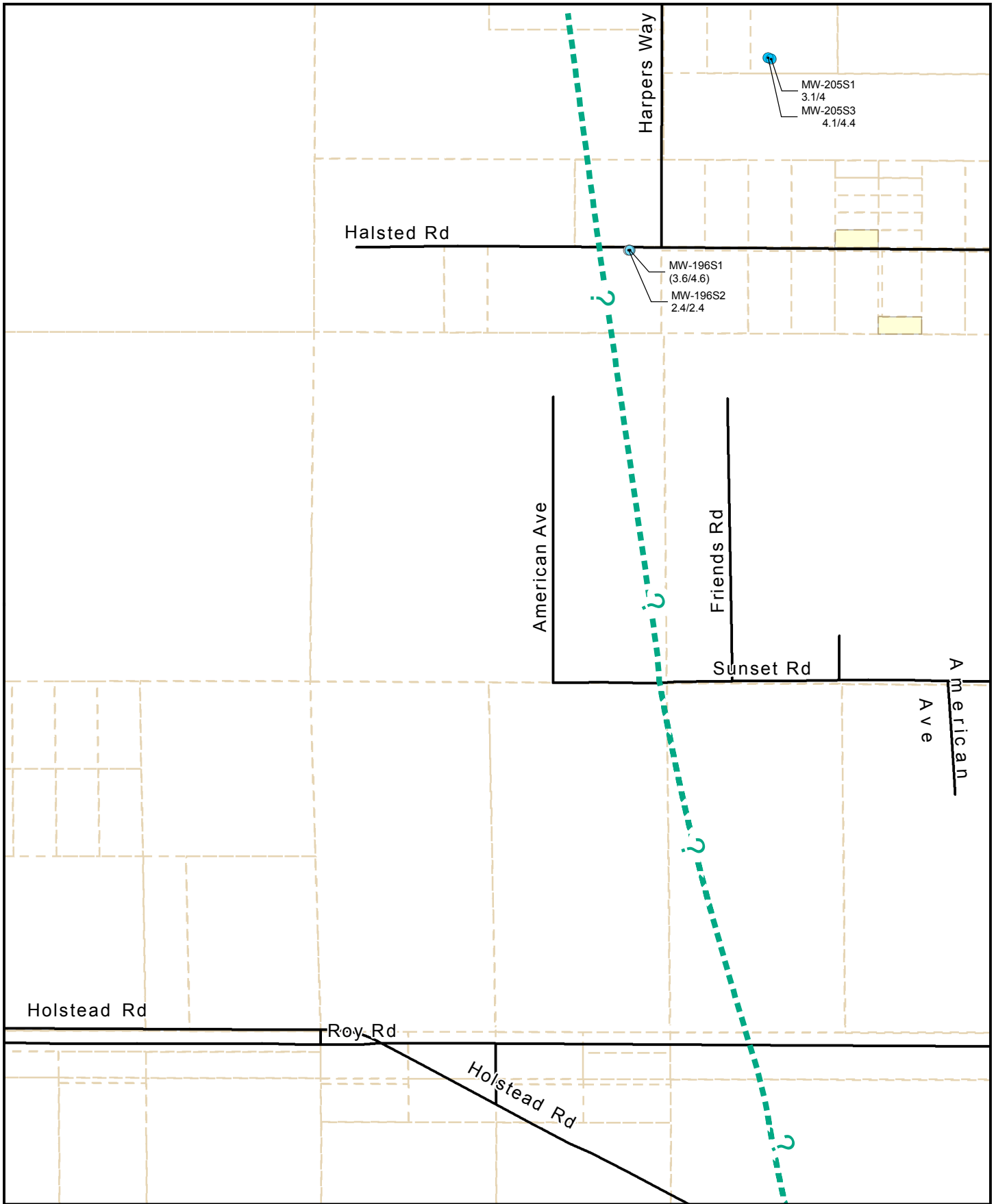
Water Board. 2015. Cleanup and Abatement Order No. R6V-2015-0068 Requiring Pacific Gas and Electric Company to Cleanup and Abate Waste Discharges of Total and Hexavalent Chromium to the Groundwaters of the Mojave Hydrologic Unit. November 4.



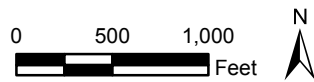
See Legend Figure for  
Feature Descriptions



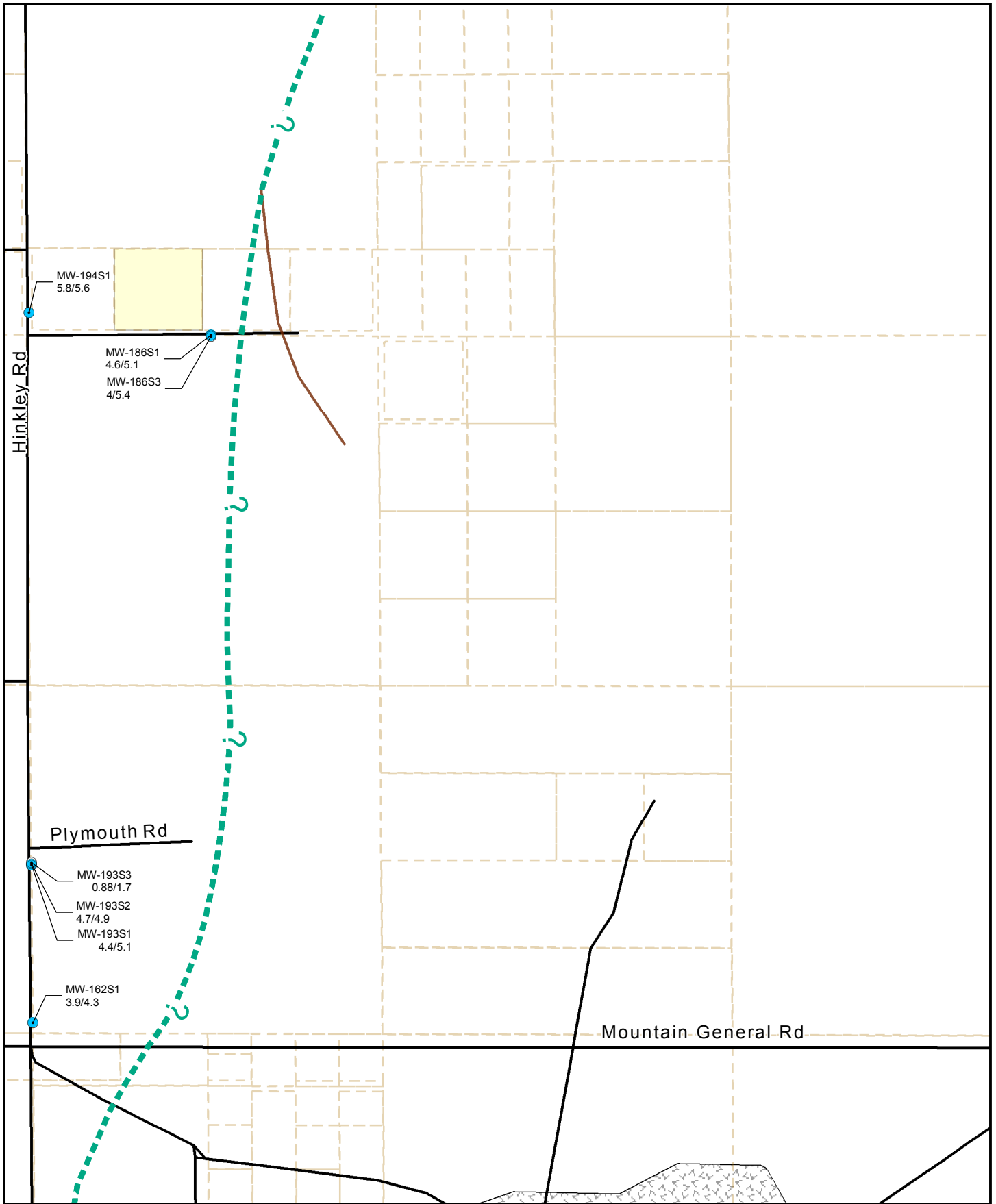
MAP 01



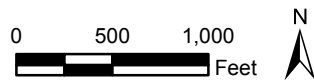
See Legend Figure for  
Feature Descriptions



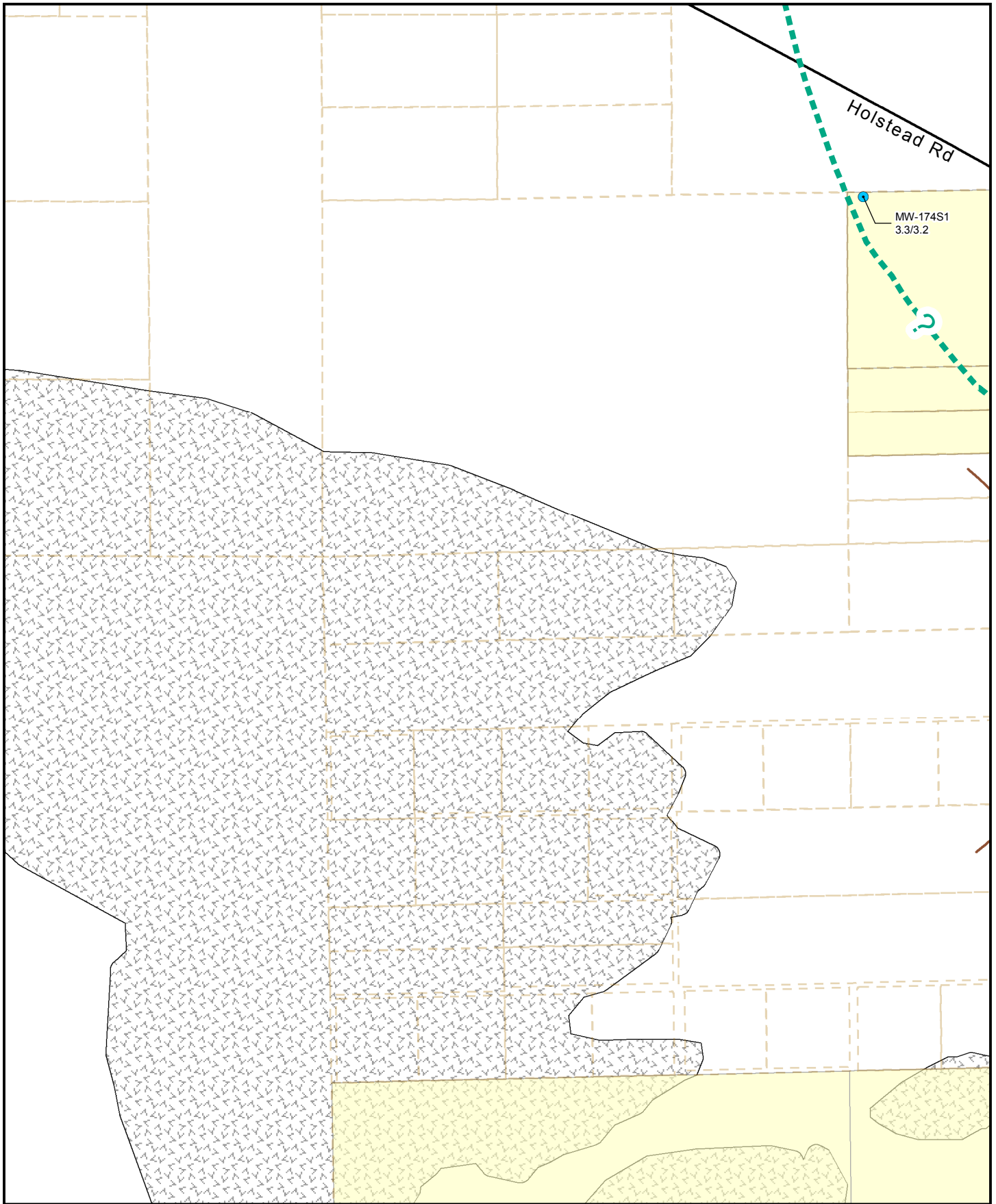
MAP 02



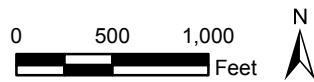
See Legend Figure for  
Feature Descriptions



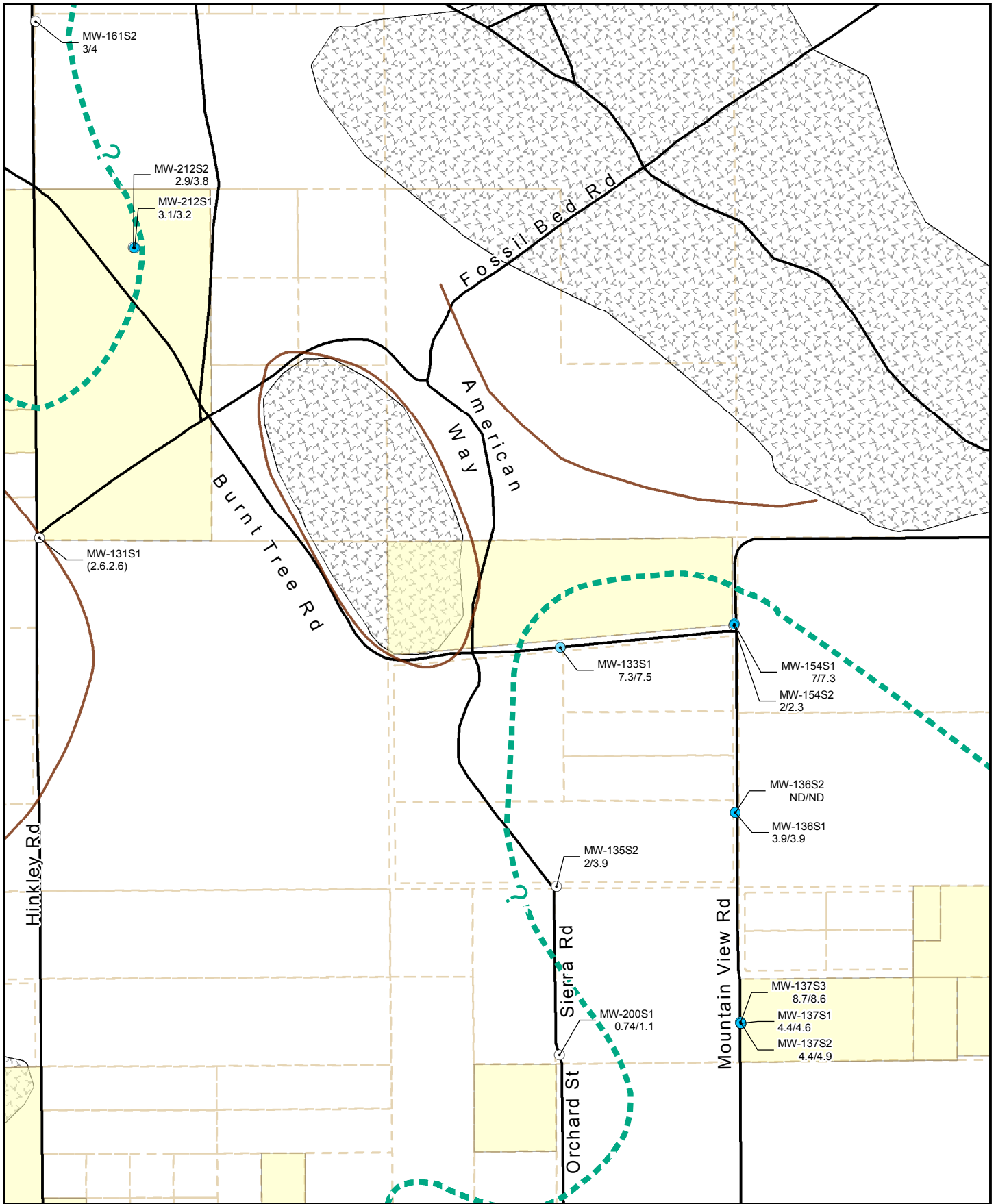
MAP 03



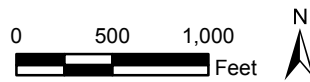
**See Legend Figure for  
Feature Descriptions**



**MAP 04**

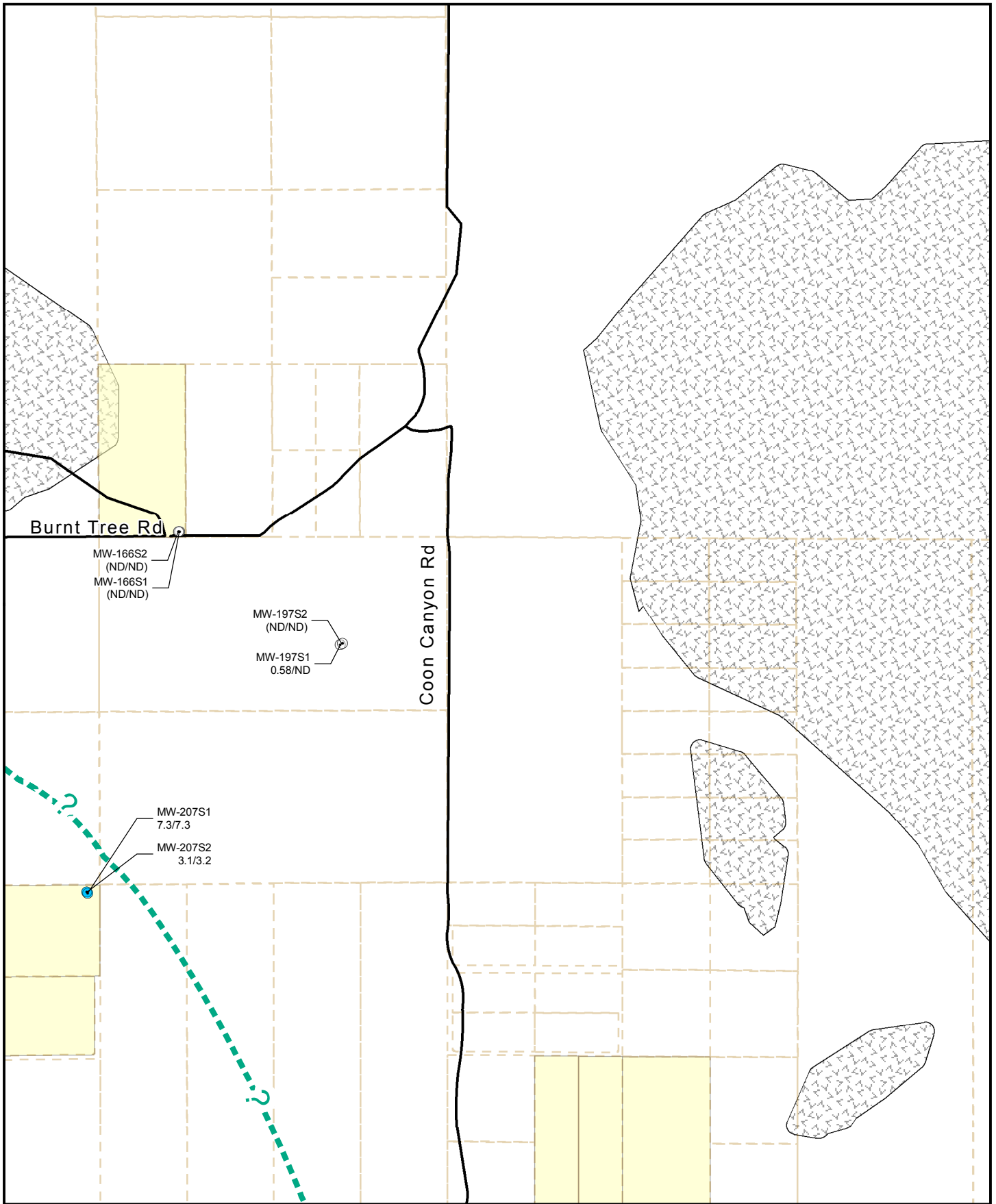


See Legend Figure for  
Feature Descriptions

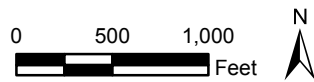


MAP 05



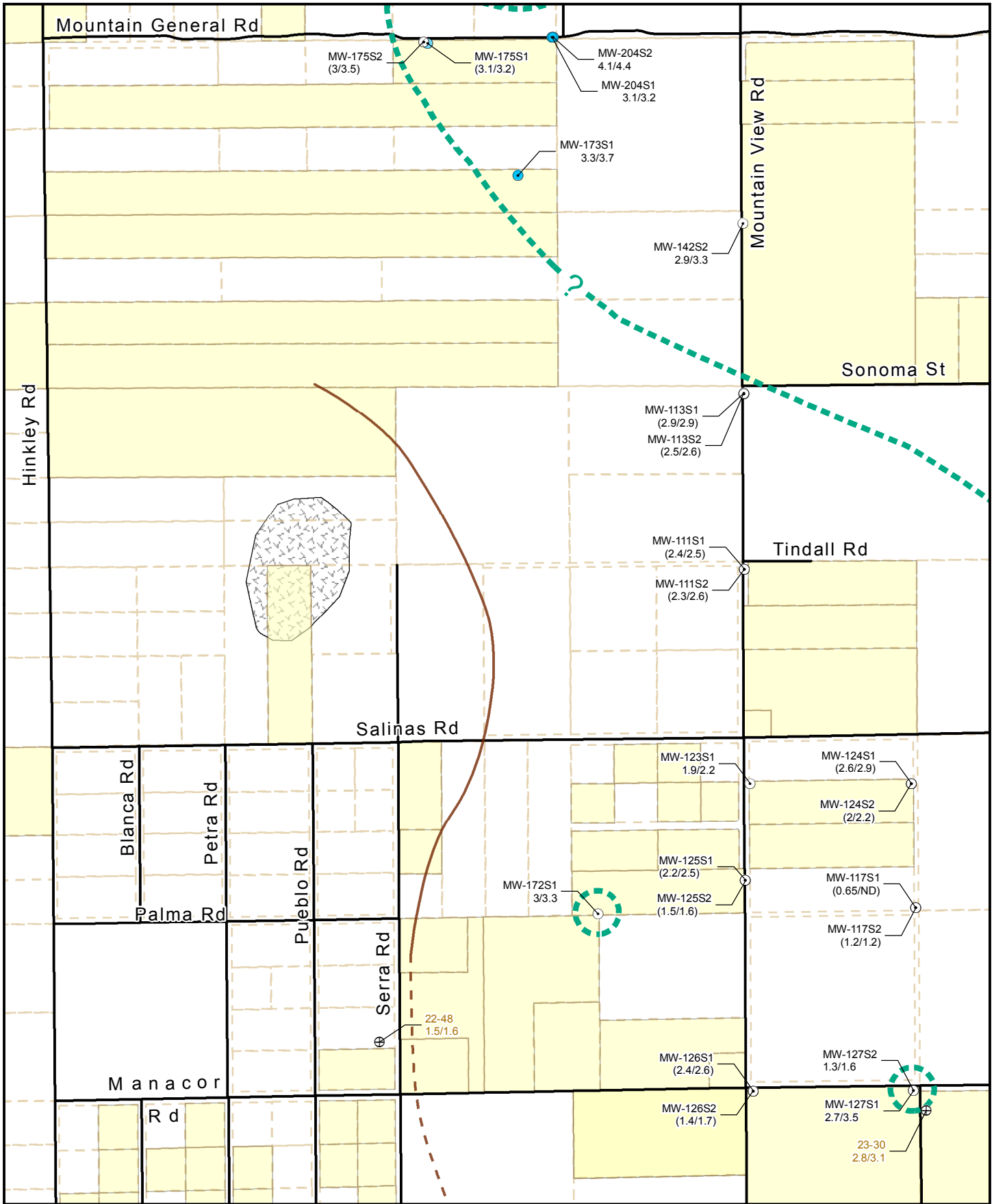


See Legend Figure for  
Feature Descriptions

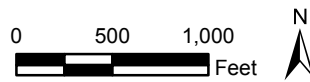


MAP 06

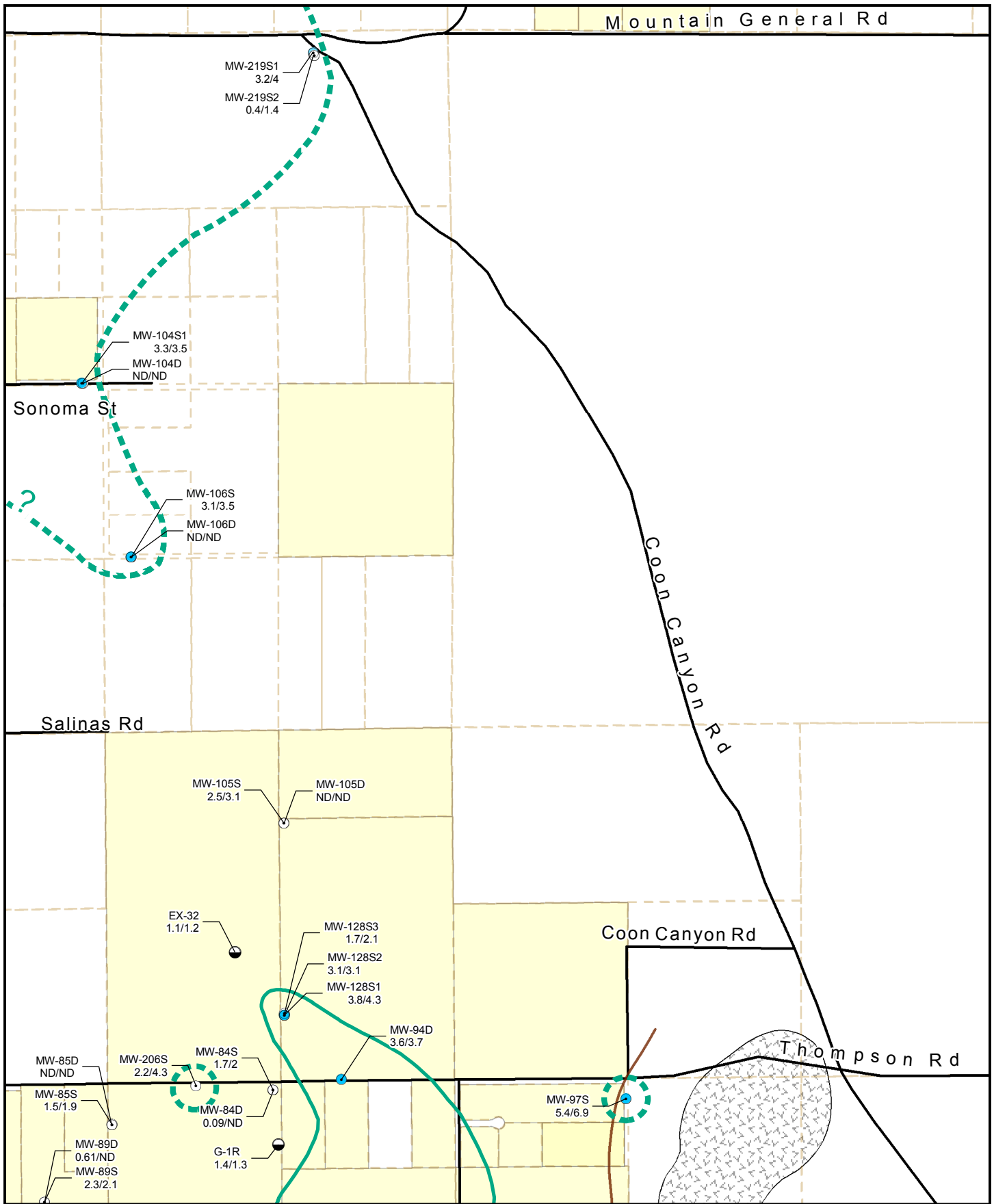




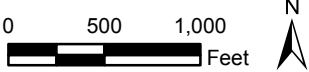
See Legend Figure for  
Feature Descriptions



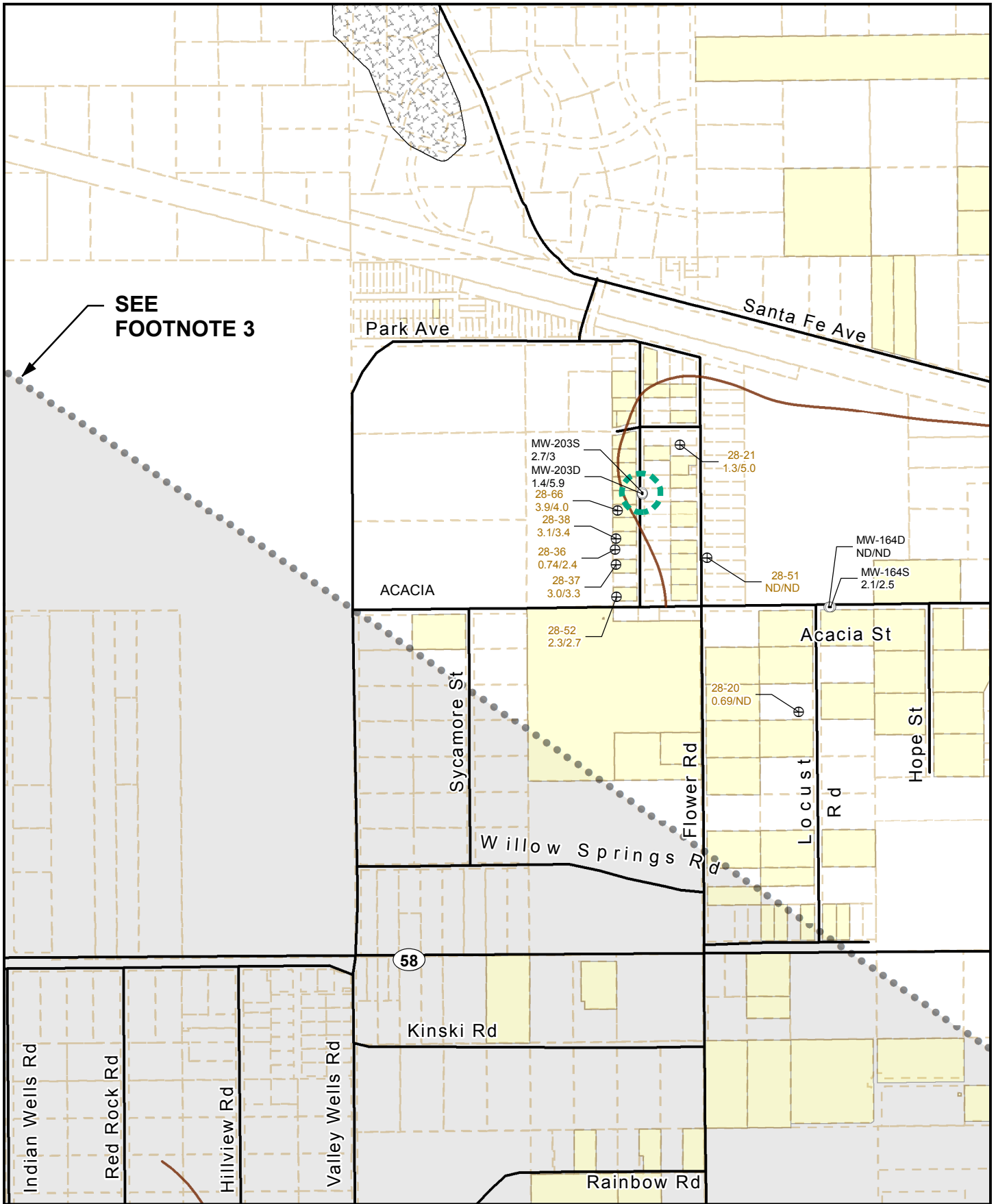
MAP 07



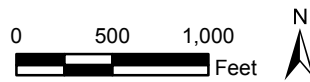
See Legend Figure for  
Feature Descriptions



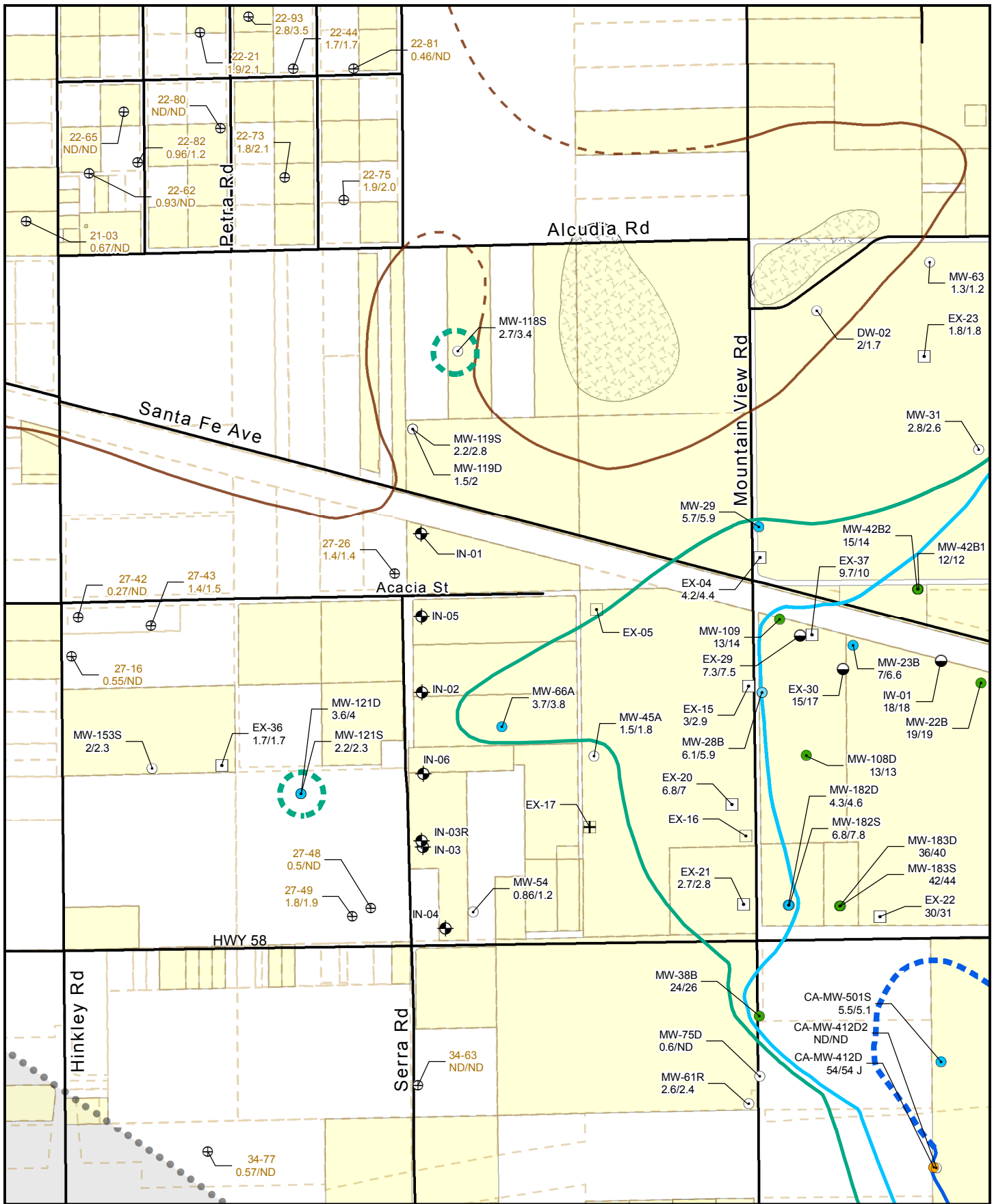
MAP 08



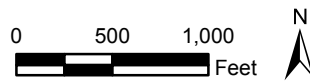
See Legend Figure for  
Feature Descriptions



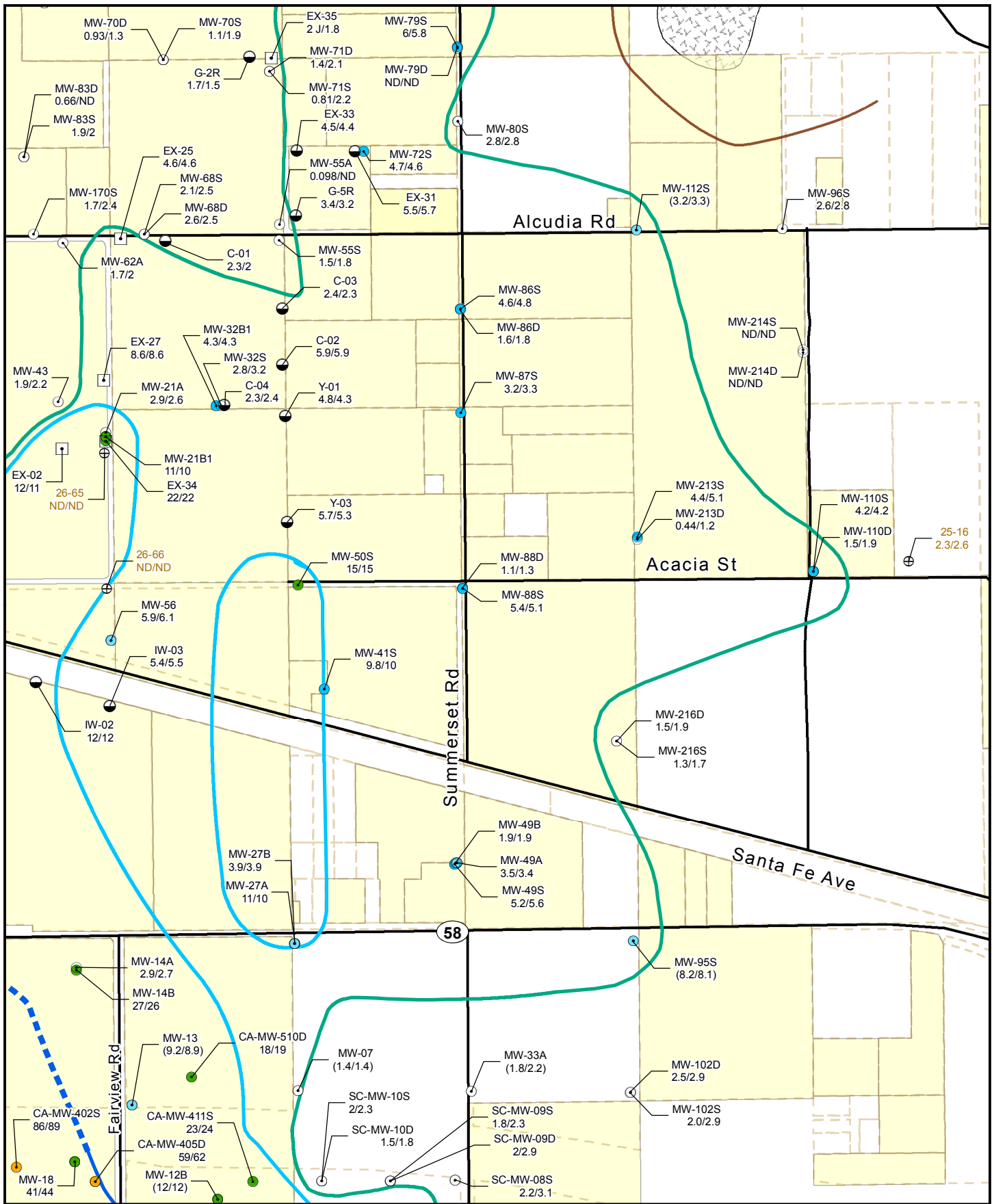
MAP 09



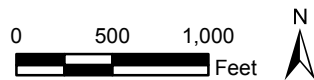
See Legend Figure for  
Feature Descriptions



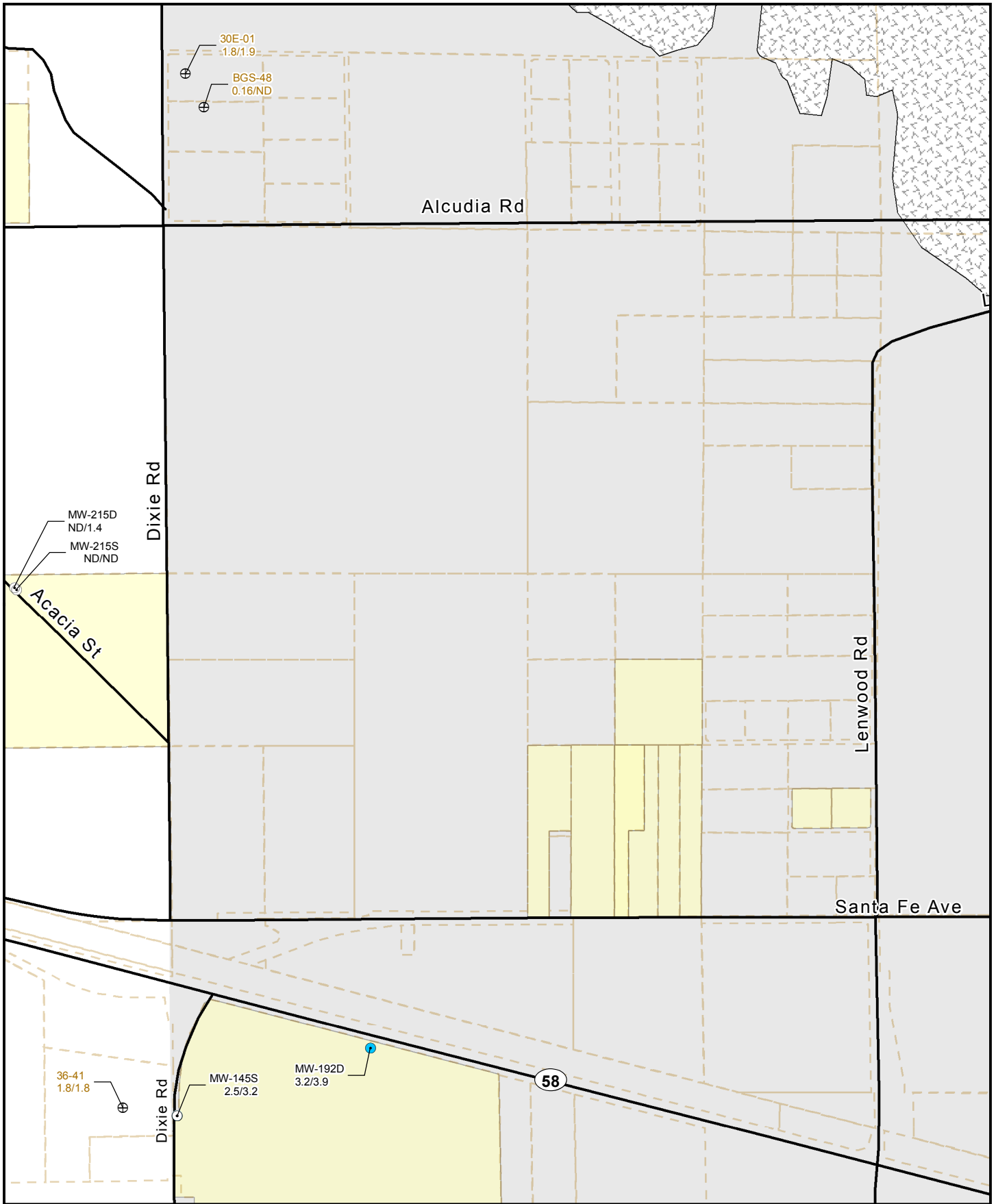
MAP 10



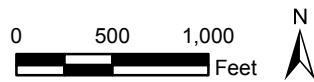
See Legend Figure for  
Feature Descriptions



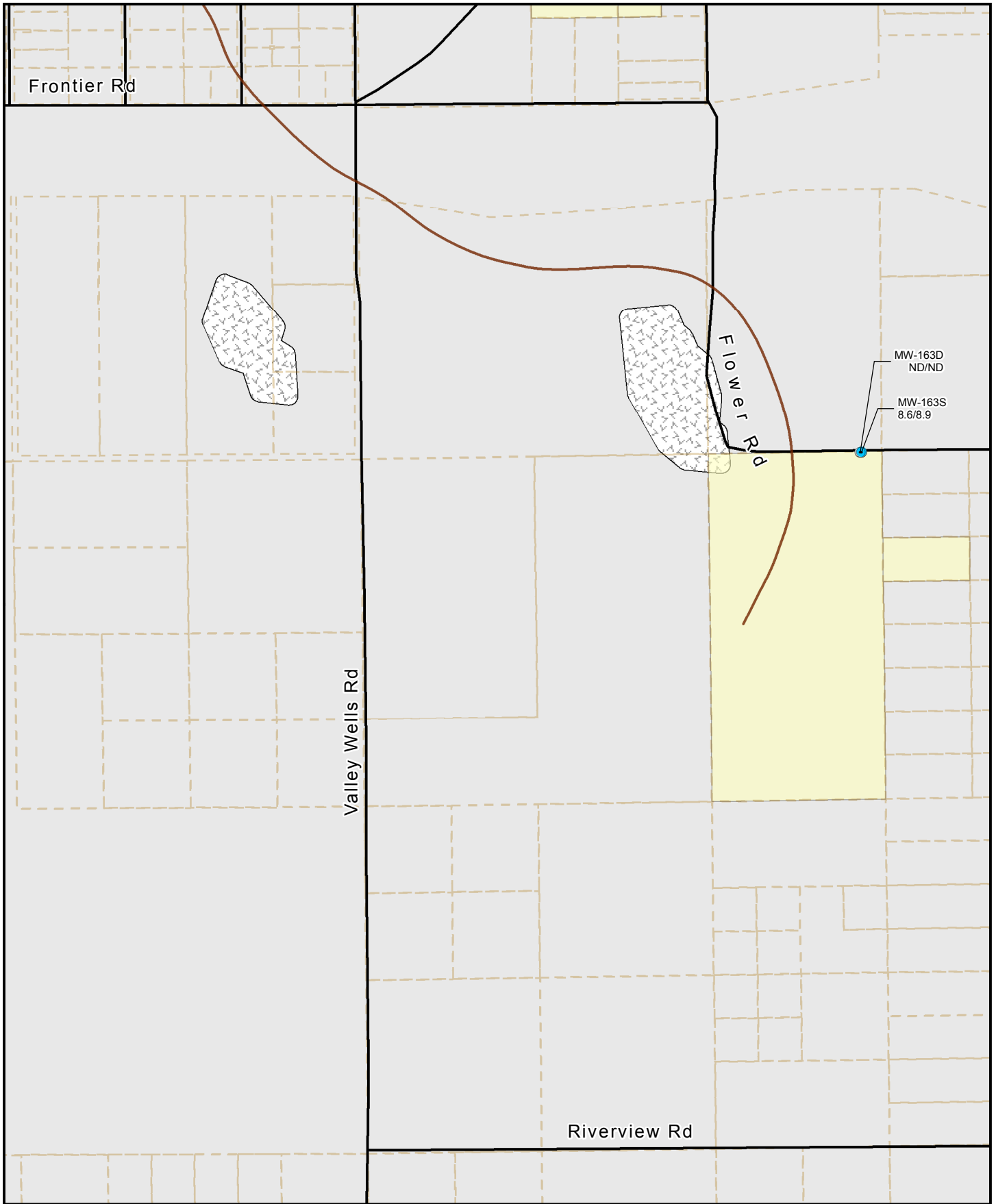
MAP 11



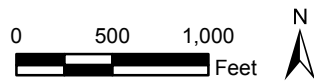
**See Legend Figure for  
Feature Descriptions**



**MAP 12**

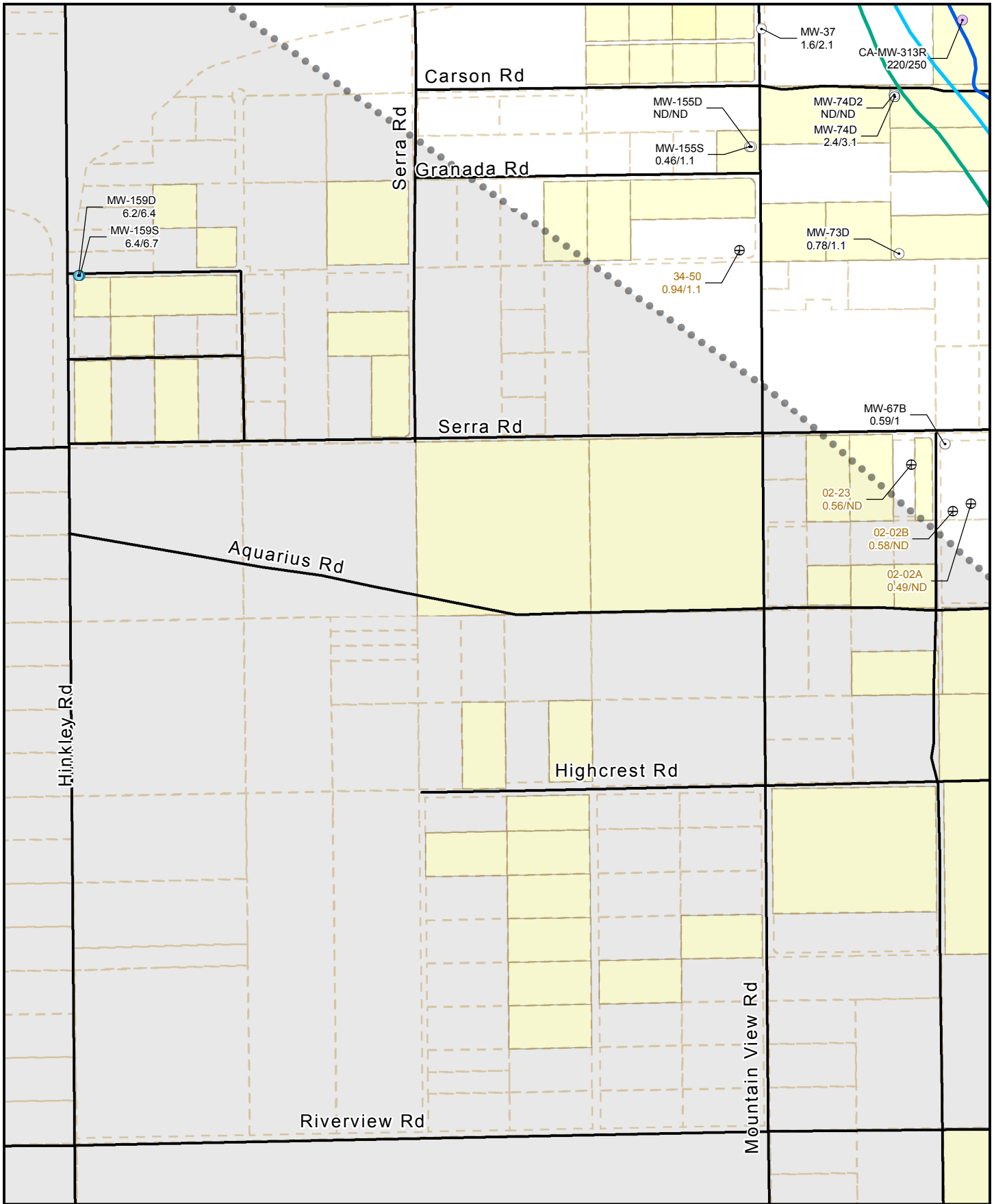


**See Legend Figure for  
Feature Descriptions**

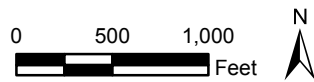


**MAP 13**

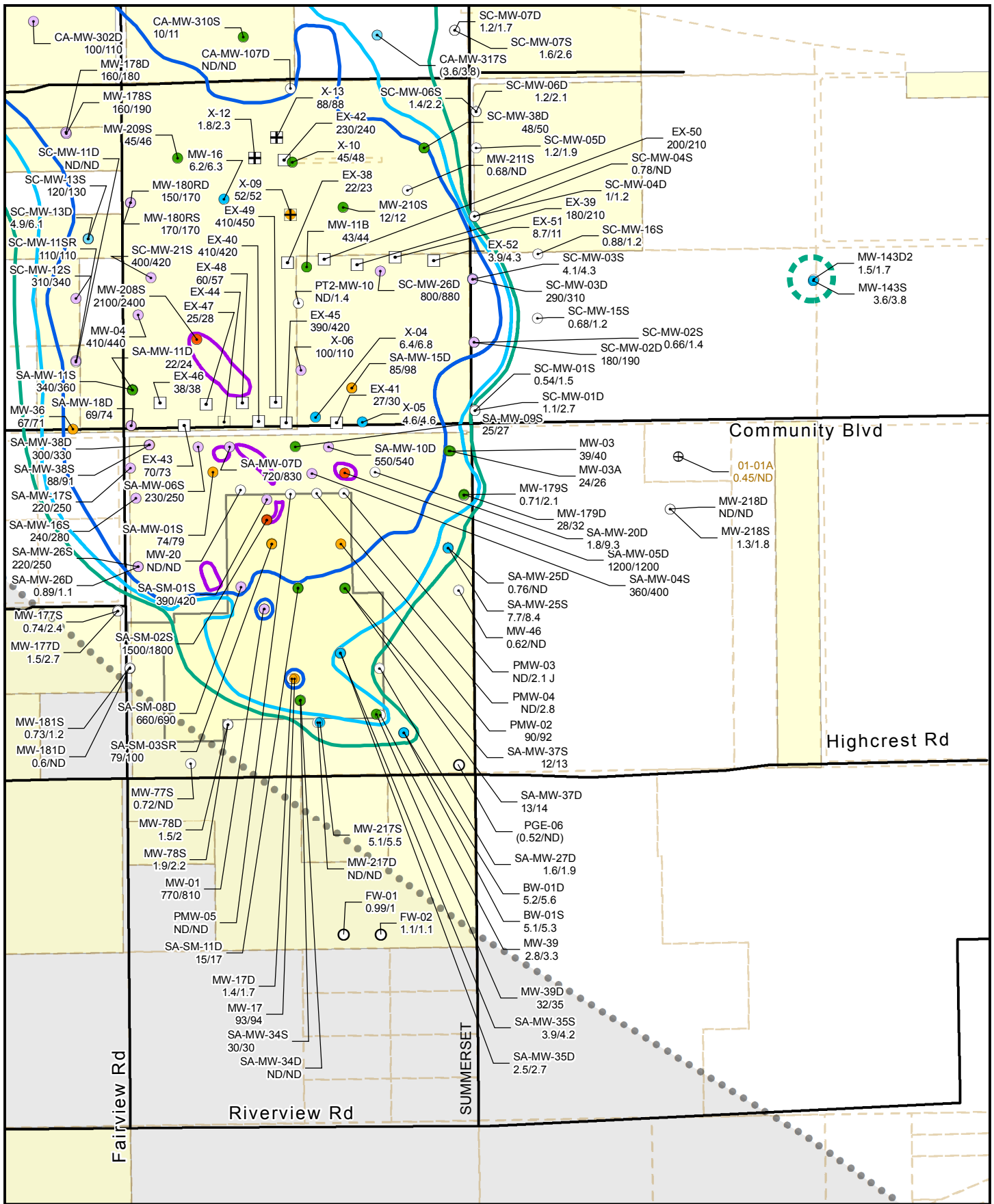




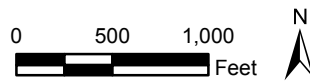
See Legend Figure for  
Feature Descriptions



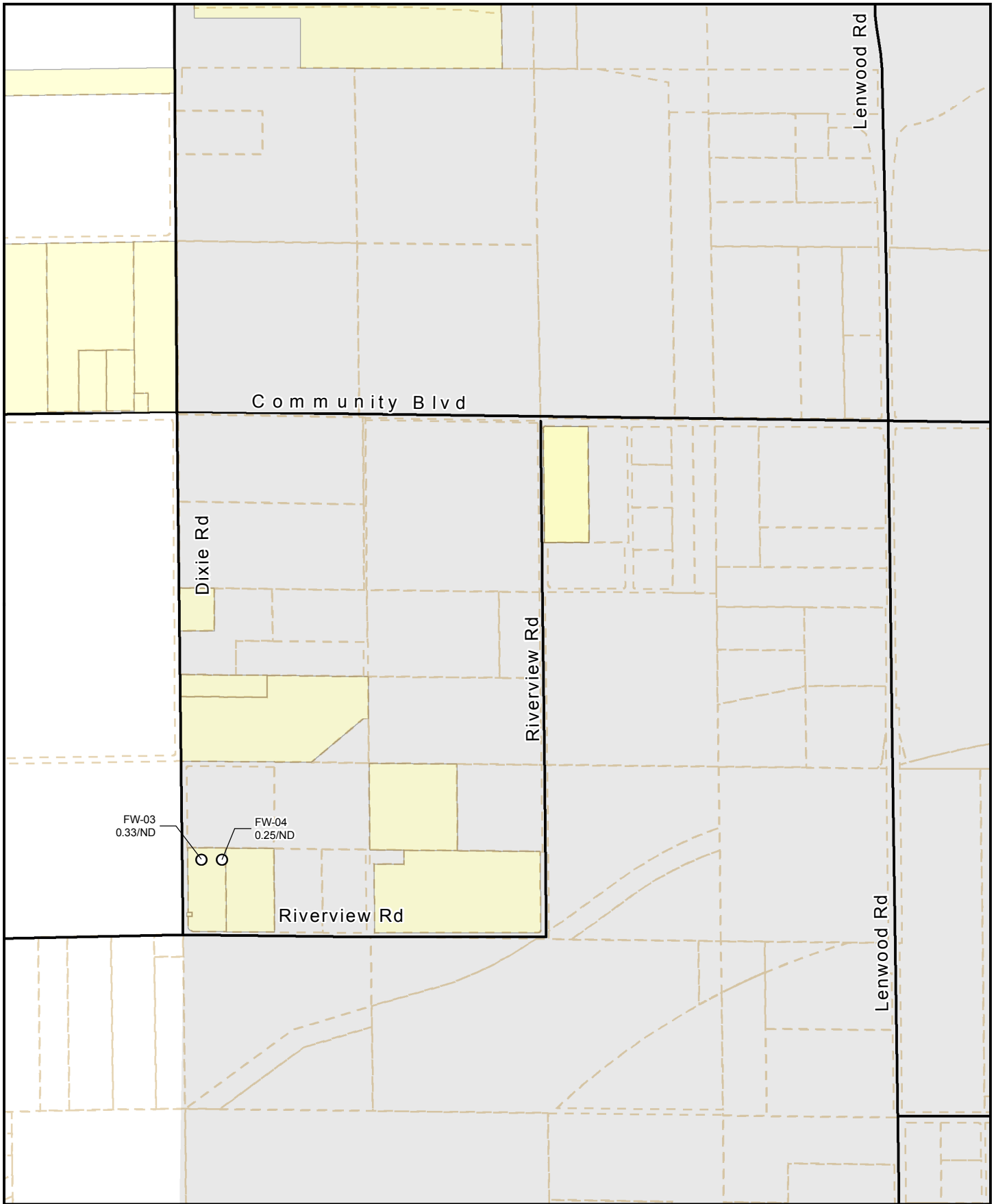
MAP 14



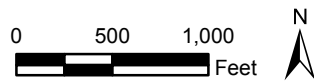
See Legend Figure for  
Feature Descriptions



MAP 15



**See Legend Figure for  
Feature Descriptions**



**MAP 16**