

US Army Corps of Engineers®

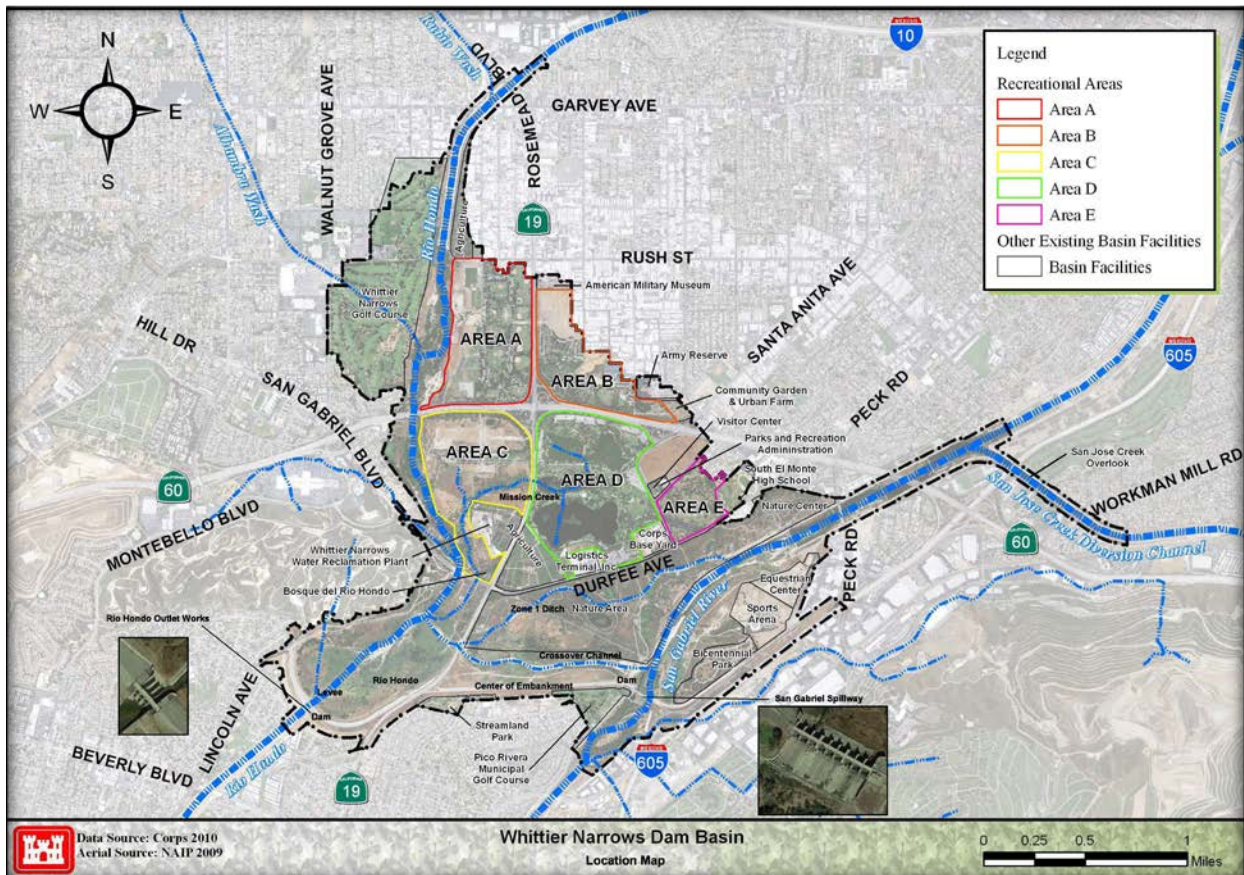
LOS ANGELES DISTRICT

Operations Division
915 Wilshire Blvd, 11th Floor
Los Angeles, CA. 90017

NOTIFICATION: Pursuant to Section II.C.2.b of the May 12, 2017, Memorandum of Understanding (MOU) Between the United States Army Corps of Engineers, Los Angeles District (USACE) and the California Regional Water Quality Control Board, Los Angeles Region (LARWQCB), concerning Operation, Maintenance, Repair, Replacement, and Rehabilitation (OMRR&R) of the Los Angeles County Drainage Area (LACDA) Project in Waters of the United States.

SUBJECT: Annual sediment, debris, and vegetation removal from inlet and outlet concrete apron at Whittier Narrows Dam (Rio Hondo and San Gabriel Spillway).

PROJECT LOCATION: Whittier Narrows Dam – South El Monte, California.



JUSTIFICATION: Clearing of accumulated sediment, debris, and vegetation is required prior to the rainy season each year to prevent clogging of the outlet works during storms. Clogged inlet gates could block storm flows from passing through the outlet works and downstream channel which can result in flooding.

CESPL-AM-OM

SUBJECT: Notification of Annual sediment, debris, and vegetation removal from inlet and outlet concrete apron at Whittier Narrows Dam (Rio Hondo and San Gabriel Spillway)

PROPOSED SCHEDULE: April 23, 2018 through May 17, 2018. Activities identified in this notification the sooner of (1) 45 days of receipt of this notification or (2) LARWQCB concurs that routine maintenance activities may proceed.

ACTIVITIES DESCRIPTION: Removal of sediment, debris, and vegetation will be limited to the inlet and outlet concrete apron areas. Work will be completed by clean excavation using mechanized equipment, such as a wheeled loader, backhoe, and dump truck. This material would then be hauled to an approved downstream uplands disposal site. Work would occur in the dry below the high water mark. No stream diversion or dewatering is proposed. No staging or stockpiling would occur within the channel.

San Gabriel Spillway (upstream)



San Gabriel Spillway (downstream)



Rio Hondo (upstream)



Rio Hondo (downstream)



Best Management Practices (BMPs) to be implemented to Avoid and/or Minimize Impacts to Jurisdictional Waters of the United States: The first nine of the recommended BMP's listed under Exhibit B of Attachment A – MOU between the USACE and LARWQCB concerning OMRR&R of the LACDA Project in waters of the U.S. will be used for this maintenance activity.

CESPL-AM-OM

SUBJECT: Notification of Annual sediment, debris, and vegetation removal from inlet and outlet concrete apron at Whittier Narrows Dam (Rio Hondo and San Gabriel Spillway)

APPROVED BY:

Date: March 9, 2018

Lillian Doherty
Operations Division
Los Angeles District, U.S. Army Corps of Engineers