

US Army Corps of Engineers®

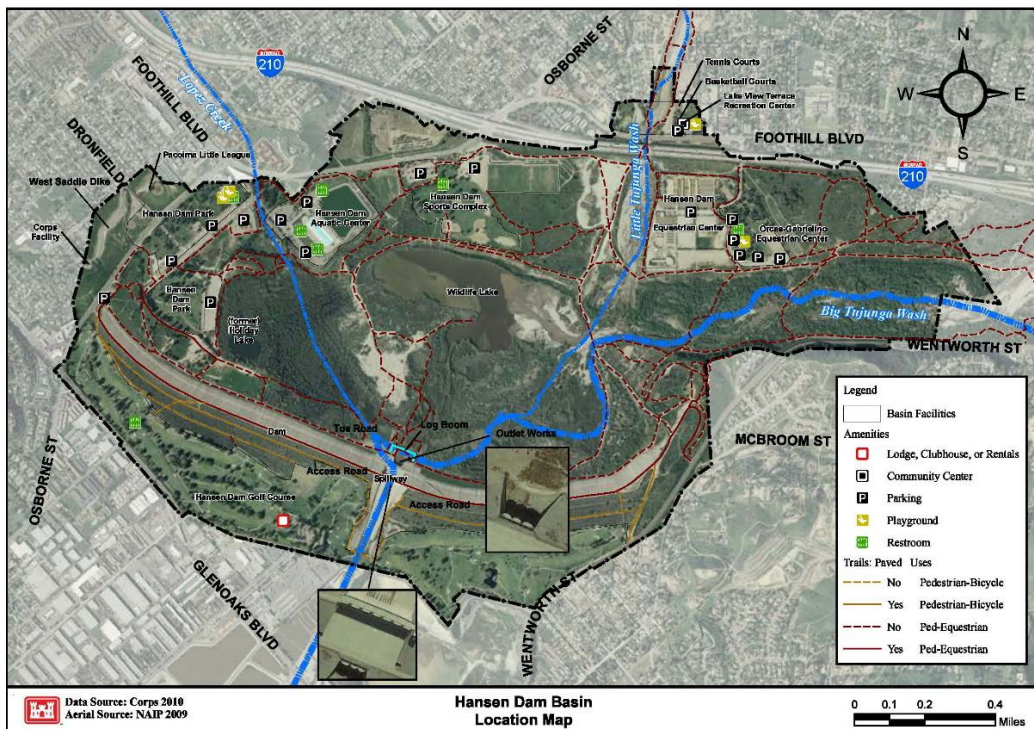
LOS ANGELES DISTRICT
Asset Management Division
Operations and Maintenance Branch
915 Wilshire Blvd, 11th Floor
Los Angeles, California 90017

NOTIFICATION: Pursuant to Section II.C.2.b of the May 12, 2017, Memorandum of Understanding (MOU) Between the United States Army Corps of Engineers, Los Angeles District (USACE) and the California Regional Water Quality Control Board, Los Angeles Region (LARWQCB), Concerning Operation, Maintenance, Repair, Replacement, and Rehabilitation (OMRR&R) of the Los Angeles County Drainage Area (LADA) Project in Waters of the United States.

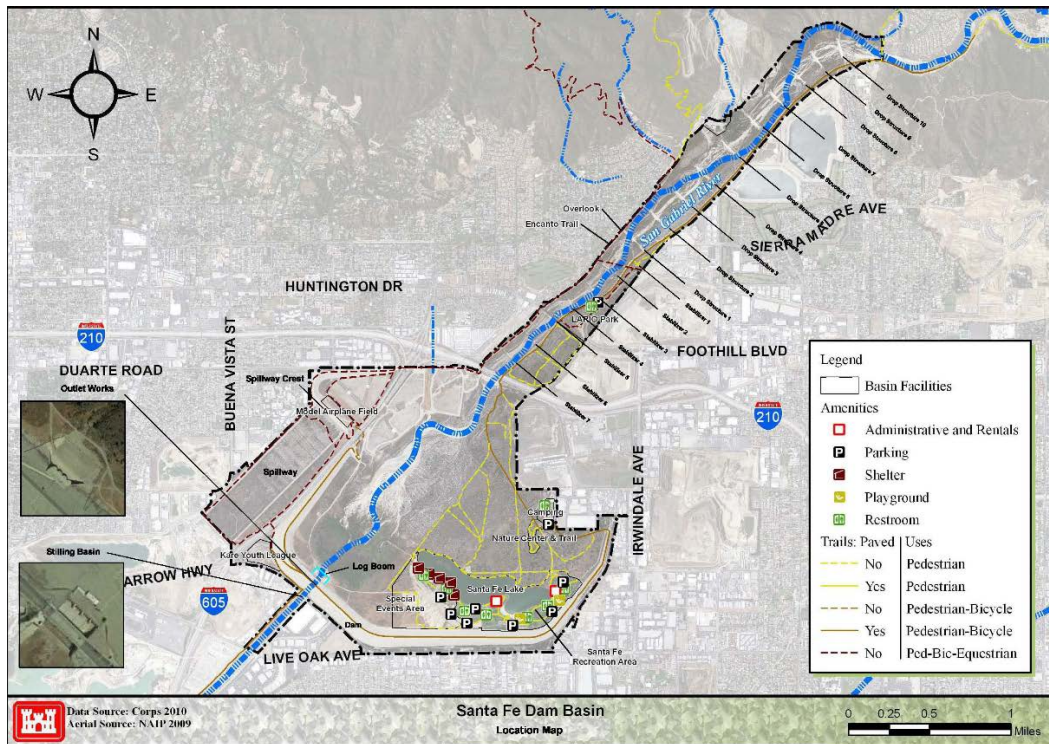
SUBJECT: Replacement of log boom barriers at Hansen and Santa Fe Dams.

Project Location: The USACE work area for the barrier installation is immediately upstream of the outlet works.

Hansen Dam and Basin



Santa Fe Dam and Basin



Proposed Schedule: Activities identified in this notification the sooner of (1) 45 days of receipt of this notification or (2) LARWQCB concurrence. Due to the necessity for the work prior to rainy season, USACE requests an expedited review in order for the barriers to be installed in November so they are in place at the beginning of the rainy season (October-December). Barriers will take approximately two weeks to install for each location.

Activities Description: Also refer to the attached *Categorical Exclusion for Hansen and Santa Fe Dams Log Boom Replacement* for more information.

Replacement barriers will be installed within the same footprint using two lowboy trailers, two dump trucks, and two backhoes. No tracked equipment will be used. It has been determined that Tuffboom barriers are the most suitable for replacement of existing logs in terms of maintenance requirements and durability. Tuffboom is made from thick-walled, UV resistant resin. Each boom includes a high load bearing internal steel channel through which all boom-to-boom connections are bolted. These 10’ modular units link together to form unlimited length boom lines. Approximately 1,200 feet of barriers will be installed at Hansen Dam and 1,200 feet of barriers at Santa Fe Dam. Replacement barriers are expected to be received late October or early November. No new access roads or ramps would be created.

Name(s) of Receiving Water Body(ies): Hansen Dam – Lopez Creek, Little Tujunga Wash, Big Tujunga Wash; Santa Fe Dam – San Gabriel River. There are no anticipated impacts to water quality.

CESPL-AM-OM

SUBJECT: Notification of Installation of Replacement Log Boom Barriers at Hansen and Santa Fe Dams.

Tuffboom Barrier



Best Management Practices (BMPs) to be Implemented to Avoid and/or Minimize Impacts to Jurisdictional Waters of the United States: All potential BMP's listed under Exhibit B of Attachment A – MOU between the District and Regional Water Board concerning OMRR&R of the LACDA Project in waters of the U.S. will be used for the work described in this notice.

APPROVED BY:

9/22/2017

Date: _____

Lillian Doherty
Chief, Operations Branch
Asset Management Division
Los Angeles District, U.S. Army Corps of Engineers