

**2017 Los Angeles River Trash TMDL Annual Report  
for the City of Pasadena**

Prepared for the Los Angeles Regional Water Quality Control Board  
Submitted as part of the 2016-2017 Individual MS4 NPDES Annual Report

December 15, 2017

December 15, 2017

City of Pasadena Trash TMDL Annual Report

---

**Table of Contents**

1. Background	2
2. Compliance Status	2
3. Full Capture Systems, Partial Capture Systems, and Institutional Controls	2
4. Daily Generation Rate (DGR) Study	2
4.1 Study method	3
4.2 Collection routes	3
4.3 Field pictures	8
5. Mass Balance Approach	10
6. Trash TMDL Reporting Forms	<b>10</b>

December 15, 2017

City of Pasadena Trash TMDL Annual Report

---

**1. Background**

The City of Pasadena (City) is complying with the Los Angeles River Trash TMDL (Trash TMDL) through an alternative compliance option, as allowed by the June 11, 2015, Los Angeles Regional Water Quality Control Board (Regional Board) Amendment to the Trash TMDL. The City is employing a combination of full capture systems, partial capture systems, and institutional controls—all properly sized, operated, and maintained—to achieve a reduction in trash discharge of 99% or greater from the baseline load. The percent reduction is determined through a mass balance approach, based on a daily generation rate (DGR) study as described in the Regional Board's August 9, 2007, Trash TMDL Staff Report for the Los Angeles River Watershed.

**2. Compliance Status**

The Regional Board's mass balance worksheets (Reporting Forms) were used to calculate the percent reduction in trash discharge for reporting year 2016-2017. They are discussed in Section 5 and included in Section 6 of this report.

The City will conduct a DGR study in 2018 and will continue to properly maintain its trash capture devices and institutional controls and anticipates loading reductions above 99% in future reporting years. To ensure this level of reduction, the City will install approximately 400 additional full capture systems, with installations scheduled for 2018. After the 2018 study, the City requests the Executive Officer's concurrence to reduce the frequency of DGR studies from annually to once every five years. The City will report annually on the continued implementation at the same level of capture devices and institutional controls and any drastic land use changes that occur.

**3. Full Capture Systems, Partial Capture Systems, and Institutional Controls**

A complete list of trash capture devices is included in Section 6. Institutional controls include littering ordinances, increased catch basin cleaning prior to and during rainy seasons, weekly and special event street sweeping, public education and stormwater pollution prevention outreach, residential curbside recycling, hazardous and electronic waste roundups, and bulky item collection.

**4. Daily Generation Rate (DGR) Study**

The City's trash discharge for the reporting year was estimated using a mass balance approach based on a trash DGR calculated for land use areas within the City. The representative land use areas studied were commercial, high and low density residential, industrial, public facilities, and open space. The DGR was calculated by weighing trash collected over a 30-day period in the summer along representative street sweeping collection routes within the study areas, then extrapolating that weight across the City. See Figures 1-7 for the designated routes. The results of the DGR study are included as part of the Regional Board Reporting Forms in Section 6.

December 15, 2017

City of Pasadena Trash TMDL Annual Report

#### 4.1 Study method

Trash<sup>1</sup> was manually picked up with a reaching tool along the collection routes. (See Figure 8.) The manual pickup was conducted one day prior to street sweeping for each route. Catch basins along the study routes were covered to prevent trash from being swept into them. (See Figure 9.) Only trash a quarter of an inch or larger was collected. Collected trash in each area was weighed using a calibrated digital scale. (See Figure 10.) Five gallon buckets were used to estimate the volume. The trash was then separated and quantified by material type. A standard health and safety plan was followed at all times. The health and safety plan is available upon request.

#### 4.2 Collection routes

Figures 1-7 show the collection routes for the DGR Study. Each figure includes a brief description.

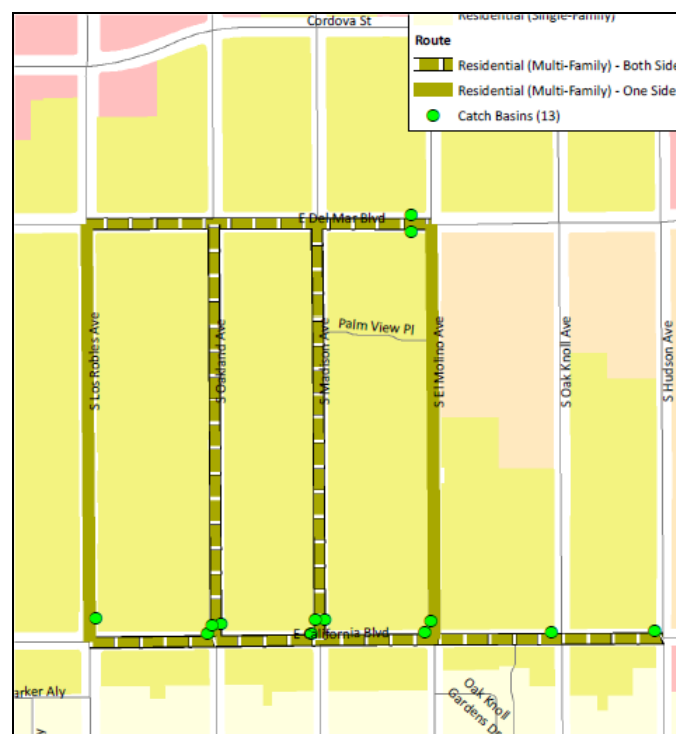


Figure 1. High Density Residential Area Route. Collection occurred on alternating Mondays—route includes both sides of the street except for Los Robles and Molino Ave which are one side, the side swept on Tuesday.

<sup>1</sup> Following the Los Angeles River Trash TMDL, “trash” is defined in California Government Code Section 68055.1(g) as “...all improperly discarded waste material, including, but not limited to, convenience food, beverage, and other product packages or containers constructed of steel, aluminum, glass, paper, plastic, and other natural and synthetic materials, thrown or deposited on the lands and waters of the state, but not including the properly discarded waste of the primary processing of agriculture, mining, logging, sawmilling or manufacturing.”

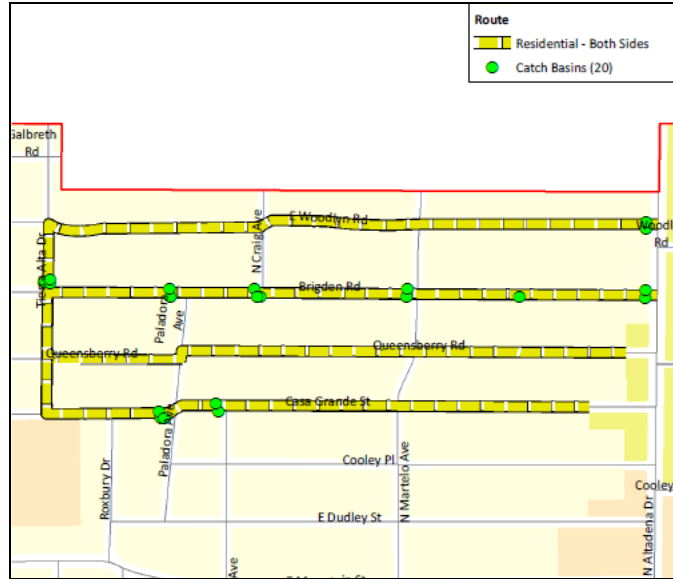


Figure 2. Low Density Residential Area Route. Collection occurred alternating Wednesdays. Route includes both sides of the street, the sides swept on Thursday.

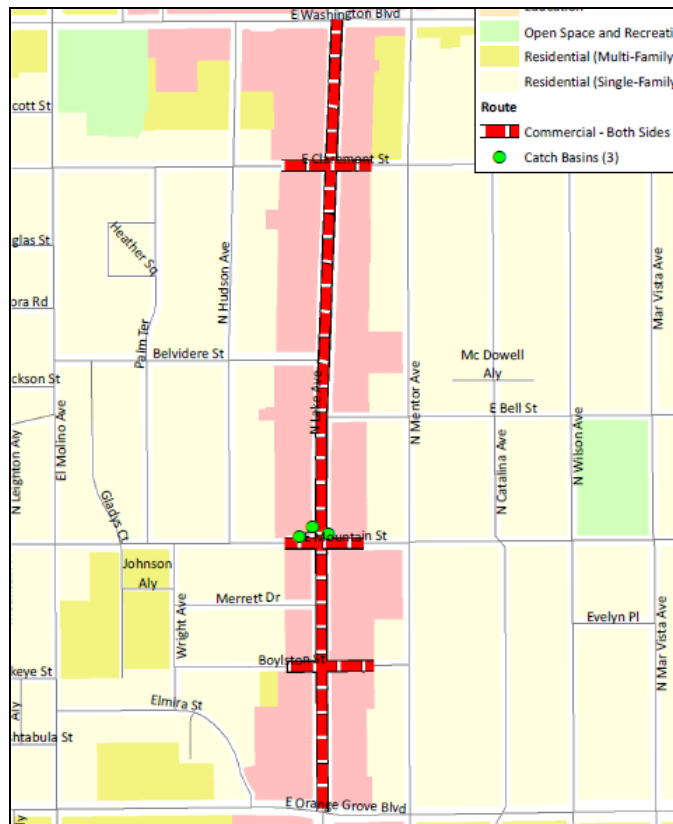


Figure 3. Commercial Area Route 1. Collection occurred alternating Fridays. Route includes both sides of the sides of the street on Lake Ave, from Orange Grove Blvd. to Washington. Street sweeping on Monday.

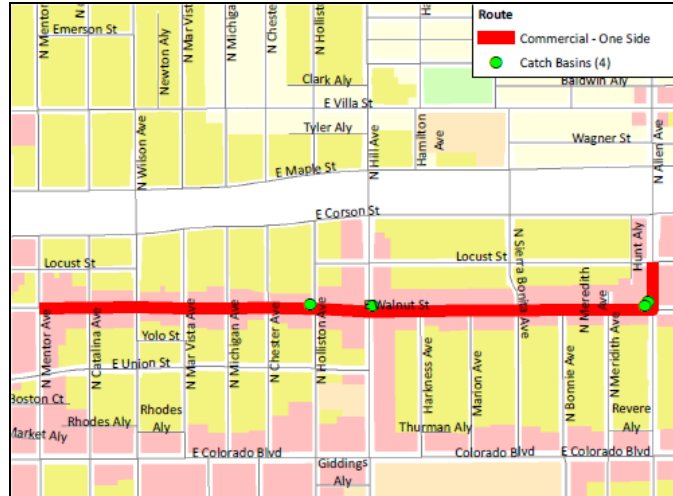


Figure 4. Commercial Area Route 2. Collection occurred alternating Fridays. Route includes only the north side of Walnut St. from Allen Ave to N. Mentor Ave, the side swept on Mondays.

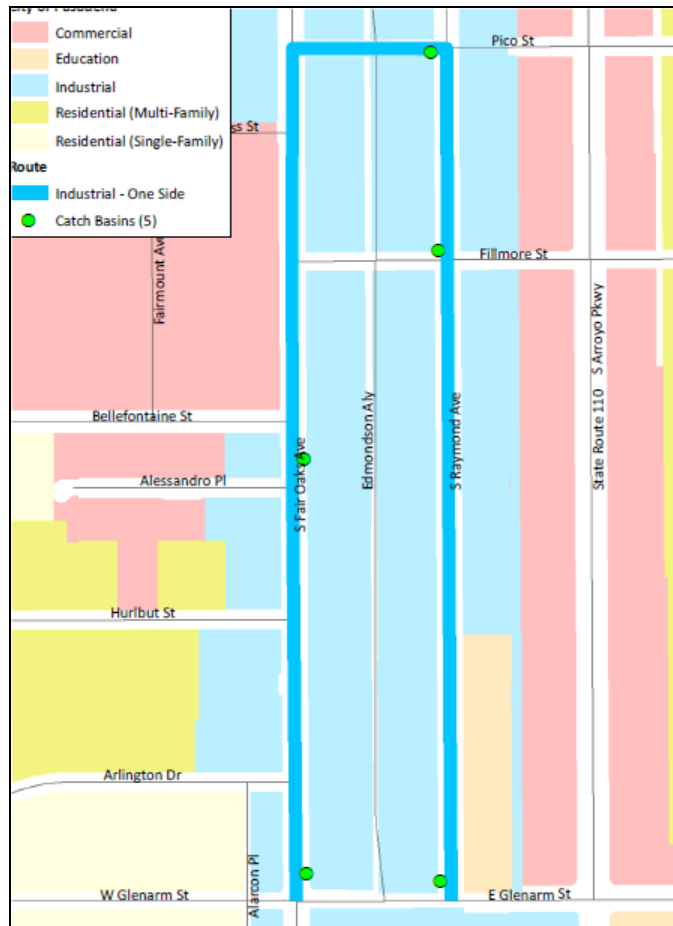


Figure 5. Industrial Area Route. Collection occurred on alternating Mondays. Route includes only the sides of the street swept on Tuesdays.



Figure 6. Public/ Educational Area Route. Collection occurred on alternating Wednesdays. Route includes only the school side, swept on Thursday.



Figure 7. Open Space/Recreational Area Route. Collection occurred alternating Mondays. Route runs along the side of the street swept Tuesdays.



December 15, 2017

City of Pasadena Trash TMDL Annual Report

### 4.3 Field pictures

Figures 8 -11 were taken during the 2017 DGR study. Each picture includes a brief description.



Figure 8. DGR crew member collecting trash using a reaching tool.



Figure 9. Covered catch basins along the Public/Educational Study route, on the corner of Hill and San Pasqual, preventing trash from being swept into them



Figure 10. DGR crew member weighing collected trash using a digital scale.

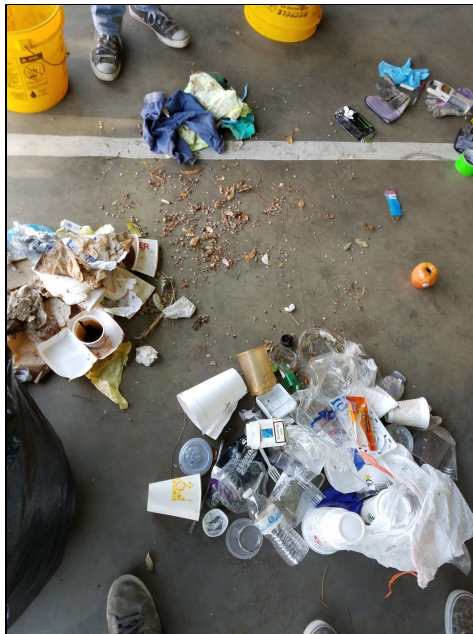


Figure 11. Sorted trash pile from the Industrial Area route on 8-21-17.

December 15, 2017

City of Pasadena Trash TMDL Annual Report

---

**5. Mass Balance Approach**

The mass balance Reporting Forms provided by the Regional Board were used to calculate total trash discharge. (See Section 6.) Deviations from the Reporting Forms are noted and explained in the comments sections. This includes the following:

- The City was unable to obtain catch basin clean-out data for the reporting year. It is possible that 705 lbs of trash or more was recovered from catch basins through this process. If subtracted from the "Storm Year Trash Discharge" weight for the reporting year, this would equate to 99.0% compliance or more.
- The City's streets are not swept in one day. Approximately equal parts are swept Monday through Friday, rotating on a bi-weekly schedule. Accounting for this effect results in fractional days of trash accumulation for a given storm event.

**6. Trash TMDL Reporting Forms**

The 2017 Trash TMDL Reporting Forms are included on the following pages.

Trash Collection for Calculation of Daily Generation Rate, DGR										
Col. 1	Col. 2	Col. 3	Col. 4	Col. 5	Col. 6	Col. 7	Col. 8	Col. 9	Col. 10	Col. 11
Land Use Category	Total Area within Jurisdiction	Representative Area for DGR Calculation	Date of Last Street Sweeping	Date of DGR Sampling	Length of Collection Period	Trash Collection from Representative Area (lb. or gal.)	Trash Cleaned Out from Catchbasin(s) within the Representative Area (lb. or gal.)	Total Amount of Trash Generated in Representative area	Total Trash Generated within Representative Area	Comments
Low Density	390.96	5.4	07/26/17	8/9/17	13	1.56	0	1.56		Residential areas swept bi-weekly. DGR sampling collected bi-weekly (Wednesday) by hand, and prior to street sweeping activities (Thursdays). Thus a two-week period elapsed between sweeping and collection events.
			08/10/17	8/23/17	13	3.38	0	3.38		
			08/24/17	9/6/17	13	1.25	0	1.25		
				Total Days:	39				11.49	
Commercial	106.836	3.15	7/31/2017	8/11/2017	11	7.31	0	7.31		Commercial areas swept bi-weekly. DGR sampling collected bi-weekly by hand (Fridays) and prior to street sweeping (Mondays), thus an eleven-day period elapsed between sweeping and collection events.
			8/14/2017	8/25/2017	11	8.00	0	8.00		
			8/28/2017	9/8/2017	11	7.75	0	7.75		
				Total Days:	33				23.70	
High Density	132.21	3.27	08/01/17	8/14/17	13	5.75	0	5.75		Residential areas swept bi-weekly. DGR sampling collected bi-weekly (Monday) by hand, and prior to street sweeping activities (Tuesdays). Thus a two-week period elapsed between sweeping and collection events.
			08/15/17	8/28/17	13	6.25	0	6.25		
			08/29/17	9/11/17	13	4.88	0	4.88		
				Total Days:	39				17.49	
Industrial	12.369	1.09	07/25/17	8/7/17	13	3.88	0	3.88		Industrial areas swept bi-weekly. DGR sampling collected bi-weekly (Monday) by hand, and prior to street sweeping activities (Tuesdays), thus a two-week period elapsed between sweeping and collection events.
			08/08/17	8/21/17	13	3.69	0	3.69		
			08/22/17	9/4/17	13	4.19	0	4.19		
				Total Days:	39				3.42	
Public Facilities / Educational Institutions	28.209	1.01	08/03/17	8/16/17	13	2.94	0	2.94		Public & Educational areas swept bi-weekly. DGR sampling collected bi-weekly (Wednesdays) by hand, and prior to street sweeping activities (Thursdays), thus a two-week period elapsed between sweeping and collection events.
			08/17/17	8/30/17	13	1.69	0	1.69		
			08/31/17	9/6/17	6	0.81	0	0.81		
				Total Days:	32				4.75	
Open Space / Recreation	54.13	1.16	08/01/17	8/14/17	13	0.25	0	0.25		Open Space & Recreational areas swept bi-weekly. DGR sampling collected bi-weekly (Monday) by hand, and prior to street sweeping activities (Tuesdays), thus a two-week period elapsed between sweeping and collection events.
			08/15/17	8/28/17	13	0.06	0	0.06		
			08/29/17	9/4/17	6	0.44	0	0.44		
				Total Days:	32				1.09	
<b>Total Area</b>	<b>724.714</b>	<b>15.08</b>					<b>Total Trash (lbs)</b>	<b>64.1</b>		
							<b>DGR (lbs/day)</b>	<b>61.95</b>		
<b>Notes:</b>	* Total collection period must equal 30 days for each representative land use area.									
Col. 1	Land Use Category - Categories based on Baseline Monitoring Program conducted by LACDPW baseline monitoring group. Alternatively, describe land use type as designated by the City.									
Col. 2	Total area of said land use within jurisdiction (fill in once in gray-highlighted row for each land use category). Total area may be accounted for using other approved measurement units, e.g. curb miles.									
Col. 3	Representative area for DGR calculation (fill in once in gray-highlighted row for each land use category). Representative area may be accounted for using other approved measurement units, e.g. curb miles. Collectively, the areas used for DGR calculation should be representative, proportionally, of the land uses within the jurisdiction and must be approved by the EO prior to the 30-day collection period.									
Col. 4	Date of last street sweeping									
Col. 5	Date of DGR sampling (direct measurement of deposited trash) - The DGR collection period(s) must fall between June 22nd and September 22nd									
Col. 6	Length of Collection Period in days - The DGR collection period must be 30 days, total, for each representative land use area									
Col. 7	Trash collection from representative area through street sweeping or other method, lb. or gal.									
Col. 8	Trash cleaned out from catchbasins within the representative area (lb. or gal.). Trash accumulated in the CBs during the DGR collection period must be included in the total trash generated. Where CBs are closed off such that no trash can enter them for the purpose of DGR sampling, this value will be zero (0).									
Col. 9	Total amount of trash generated in representative area (sum of Col. 7 and Col. 8), lb. or gal.									
Col. 10	Total Trash Generated within Representative Area (estimated in 30 day period)									
Col. 11	Provide comments, if necessary									
Note: Sampling must be conducted during any 30-day period, starting June 22nd through September 22nd of each year.										

Rainfall Station: PASADENA 2.0 SE, CA US							
Total Trash Discharged by Storm Event							
Col. 1	Col. 2	Col. 3	Col. 4	Col. 5	Col. 6	Col. 7	Col. 8
DGR	Date of Last Street Sweeping	Date of Storm Event	Precipitation Depth *	Days **	Amount of Trash Recovered from Catchbasins	Storm Event Trash Discharge	Comments
61.95	11/13/16	11/21/16	0.53	7.89		488.69	* Rainfall data was collected from the closest rainfall station.  ** The entire City of Pasadena is not swept in one day. Approximately equal parts of the City are swept Monday through Friday, rotating on a bi-weekly schedule. As such during any given rain event, different parts of the City were swept between 1 to 14 days previously. Accounting for this effect results in fractional days of trash accumulation for a given storm event.
61.95	12/09/16	12/16/16	1.84	6.11		378.56	
61.95	12/17/16	12/22/16	0.62	4.40		272.57	
61.95	12/22/16	12/24/16	1.40	1.95		120.80	
61.95	12/25/16	12/31/16	0.39	5.25		325.22	
61.95	01/01/17	01/05/17	0.78	3.80		235.40	
61.95	01/05/17	01/09/17	0.70	3.60		223.01	
61.95	01/09/17	01/11/17	1.35	1.18		72.91	
61.95	01/11/17	01/12/17	1.99	0.95		58.85	
61.95	01/14/17	01/19/17	0.79	4.95		306.64	
61.95	01/19/17	01/20/17	1.67	0.95		58.85	
61.95	01/20/17	01/22/17	2.17	2.00		123.89	
61.95	01/22/17	01/23/17	0.90	0.95		58.85	
61.95	02/10/17	02/17/17	1.95	6.11		378.56	
61.95	02/17/17	02/18/17	0.71	1.00		61.95	
<b>Total Storm Year Trash Discharge</b>						<b>3,164.74</b>	
<b>Notations:</b>							
<b>Form</b>	Add additional rows for storm events, if necessary						
<b>Rainfall Station</b>	Name of rainfall station used, indicate only the L.A. County station number						
Total Storm Year Trash Discharge = Sum of individual storm event discharges for reporting period (October 1 - September 30).							
<b>Col. 1</b>	DGR for Jurisdiction from DGR Sampling Data worksheet						
<b>Col. 2</b>	Date of last street sweeping						
<b>Col. 3</b>	Date of storm event with 0.25 inch or more of rainfall						

Rainfall Station: PASADENA 2.0 SE, CA US							
<b>Total Trash Discharged by Storm Event</b>							
Col. 1	Col. 2	Col. 3	Col. 4	Col. 5	Col. 6	Col. 7	Col. 8
DGR	Date of Last Street Sweeping	Date of Storm Event	Precipitation Depth *	Days **	Amount of Trash Recovered from Catchbasins	Storm Event Trash Discharge	Comments
Col. 4	Depth of rainfall taken from nearest rainfall station (in.)						
Col. 5	Number of days between date of last street sweeping and storm event. For each day of a storm event that generates precipitation greater than 0.25 inch, the Permittee shall calculate a storm event discharge. When more than one storm event occurs prior to the next street sweeping the discharge shall be calculated from the date of the last storm event discharge calculation.						
Col. 6	Amount of trash recovered from catchbasins, if any (lb. or gal.)						
Col. 7	Storm Event Discharge = Col. 1 x Col. 5 - Col. 7 [trash discharged by the storm event], lbs. or gal.						
Col. 8	Provide comments, if necessary						

Col. 1	Col. 2	Col. 3	Col. 4	Col. 5	Col. 6	Col. 7	Col. 8	Col. 9	Col. 10
Reporting Period	Institutional Control Measure			Structural Control		Required Trash Abatement (%)	Total Combined Compliance	Compliance	Comments
	Total Trash Discharged (lbs.)	Effluent Limitation	Equivalent Compliance	Total # CBs served by FCDs and PCDs	% of CBs served by FCDs / PCDs				
31-Oct-11									
31-Oct-12									
31-Oct-13									
31-Oct-14									
31-Oct-15	2,560	6848	98.7%	407	15.9%	97.0%	98.9%		
31-Oct-16	5,471	2075	97.4%	407	15.9%	99.0%	97.8%		
31-Oct-17	3,165	2075	98.5%	407	15.9%	99.0%	98.7%*	Within 0.3%*	* The City was unable to obtain catch basin clean-out data for the reporting year. It is possible that 705 lbs of trash or more was recovered from catch basins through this process. If subtracted from the "Storm Year Trash Discharge" weight for the reporting year, this would equate to 99.0% compliance or more.

**Notations:**

- Form** Structural Control Measure: Report compliance using land area served by FCD/PCDs or number of catchbasins served by FCD/PCDs.
- Column 1: Reporting Period: Part 7.1.(C)(1) of Order No. 01-182 as amended by Order No. R4-2009-0130
- Column 2: As calculated pursuant to Part 7.1.(B)(1)(b)(2) of Order No. 01-182 as amended by Order No. R4-2009-0130  
 Alternative approaches per Part 7.1.(B)(1)(b)(3) must be approved in advance by the Executive Officer
- Column 3: Effluent Limitation per Part 7.1, Appendix 7-1, Table 1a or 1b, of Order No. 01-182 as amended by Order No. R4-2009-0130
- Column 4: Compliance = 1-(Col. 2 / Baseline Waste Load Allocation)

- Column 5: Total number of catchbasins, total number of (CBs) served by FCD/PCDs within jurisdiction
- Column 6: Percentage of CBs served by FCD/PCDs within jurisdiction
- Column 7: Required Trash Abatement: Part 7.1, Appendix 7-1 of Order No. 01-182 as amended by Order No. R4-2009-0130
- Column 8: Total Combined Compliance = (Col. 6) + (1.0-Col.6)\*(Col.4)
- Column 9: FCD Compliance: Yes, if Col. 8 is greater than Col. 7
- Column 10: Provide comments, if necessary



**Certified Full Capture Systems Database**

Col. 1	Col. 2		Col. 3	Col. 4	Col. 5	Col. 6	Col. 7	Col. 8	Col. 9	Col. 10	Col. 11
Certified FCD(s) Installed	FCD Location		Nearest Cross Street	FCD Owner	FCD Maintained By	FCD Installation Date	CB ID No. Served by FCD	CB Type	CB Owner	CB Maintained By	Frequency of FCD Maintenance and other O&M comments
SPC/S-115	NW	Orange Grove	Lake	CITY	CITY	08/13/08	104		CITY	CITY	*Typically a minimum of 2x/year (dry season, wet season)
SPC/S-115	NW	Garfield	Colorado	CITY	CITY	07/23/08	112		CITY	CITY	*same as above
SPC/S-115	NW	Hudson	California	CITY	CITY	07/31/08	115		CITY	CITY	*same as above
SPC/S-115	NE	Oak Knoll	California	CITY	CITY	08/06/08	117		CITY	CITY	*same as above
SPC/S-115	NW	Oak Knoll	California	CITY	CITY	08/13/08	118		CITY	CITY	*same as above
SPC/S-115	NW	California	El Molino	CITY	CITY	08/13/08	121		CITY	CITY	*same as above
SPC/S-115	NW	Colorado	El Molino	CITY	CITY	07/28/08	127		CITY	CITY	*same as above
SPC/S-115	NW	Lake	Colorado	CITY	CITY	08/06/08	132		CITY	CITY	*same as above
SPC/S-115	NW	Colorado	Oak Knoll	CITY	CITY	07/29/08	134		CITY	CITY	*same as above
SPC/S-115	NW	Oak Knoll	Colorado	CITY	CITY	07/30/08	135		CITY	CITY	*same as above
SPC/S-115	NE	Colorado	Lake	CITY	CITY	08/08/08	138		CITY	CITY	*same as above
SPC/S-115	NW	Madison	Colorado	CITY	CITY	07/16/08	140		CITY	CITY	*same as above
SPC/S-115	NW	Colorado	Madison	CITY	CITY	08/12/08	141		CITY	CITY	*same as above
SPC/S-115	NE	Madison	Colorado	CITY	CITY	07/17/08	142		CITY	CITY	*same as above
SPC/S-115	NW	Sunnyslope	Maple	CITY	CITY	08/08/08	158		CITY	CITY	*same as above

Col. 1	Col. 2		Col. 3	Col. 4	Col. 5	Col. 6	Col. 7	Col. 8	Col. 9	Col. 10	Col. 11
Certified FCD(s) Installed	FCD Location		Nearest Cross Street	FCD Owner	FCD Maintained By	FCD Installation Date	CB ID No. Served by FCD	CB Type	CB Owner	CB Maintained By	Frequency of FCD Maintenance and other O&M comments
SPC/S-115	SW	MAPLE	SUNNY SLOPE	CITY	CITY	07/23/08	154		CITY	CITY	*same as above
SPC/S-115	NW	MERCEDES	MAPLE	CITY	CITY	07/18/08	157		CITY	CITY	*same as above
SPC/S-115	NE	SIERRA MADRE	MAPLE	CITY	CITY	07/23/08	160		CITY	CITY	*same as above
SPC/S-115	NW	Maple	Bella Vista	CITY	CITY	07/15/08	163		CITY	CITY	*same as above
SPC/S-115	NE	Maple	Del Rey	CITY	CITY	07/16/08	166		CITY	CITY	*same as above
SPC/S-115	NW	Del Rey	Maple	CITY	CITY	07/16/08	170		CITY	CITY	*same as above
SPC/S-115	NE	Altadena	Maple	CITY	CITY	07/23/08	173		CITY	CITY	*same as above
SPC/S-115	SW	Maple	Carmelo	CITY	CITY	08/13/08	176		CITY	CITY	*same as above
SPC/S-115	NE	Vista	Maple	CITY	CITY	07/24/08	179		CITY	CITY	*same as above
SPC/S-115	NW	Maple	Martelo	CITY	CITY	08/06/08	182		CITY	CITY	*same as above
SPC/S-115	SW	Maple	Martelo	CITY	CITY	07/15/08	185		CITY	CITY	*same as above
SPC/S-115	NW	Maple	Oak	CITY	CITY	07/29/08	188		CITY	CITY	*same as above
SPC/S-115	NW	Maple	Linda Rosa	CITY	CITY	07/21/08	191		CITY	CITY	*same as above
SPC/S-115	SE	Hill	Maple	CITY	CITY	07/16/08	195		CITY	CITY	*same as above
SPC/S-115	NE	MAPLE	HILL	CITY	CITY	07/24/08	198		CITY	CITY	*same as above
SPC/S-115	NW	MAPLE	LOLA	CITY	CITY	07/15/08	201		CITY	CITY	*same as above

Col. 1	Col. 2		Col. 3	Col. 4	Col. 5	Col. 6	Col. 7	Col. 8	Col. 9	Col. 10	Col. 11
Certified FCD(s) Installed	FCD Location		Nearest Cross Street	FCD Owner	FCD Maintained By	FCD Installation Date	CB ID No. Served by FCD	CB Type	CB Owner	CB Maintained By	Frequency of FCD Maintenance and other O&M comments
SPC/S-115	NW	Maple	Holliston	CITY	CITY	07/16/08	204		CITY	CITY	*same as above
SPC/S-115	NE3	Michigan	Maple	CITY	CITY	07/17/08	207		CITY	CITY	*same as above
SPC/S-115	NW2	Michigan	Maple	CITY	CITY	07/23/08	210		CITY	CITY	*same as above
SPC/S-115	SE	Maple	Lake	CITY	CITY	07/17/08	213		CITY	CITY	*same as above
SPC/S-115	NE	Maple	Lake	CITY	CITY	07/22/08	216		CITY	CITY	*same as above
SPC/S-115	NE	El Molino	Maple	CITY	CITY	07/17/08	220		CITY	CITY	*same as above
SPC/S-115	NW	El Molino	Maple	CITY	CITY	07/22/08	223		CITY	CITY	*same as above
SPC/S-115	SW	Maple	El Molino	CITY	CITY	07/23/08	226		CITY	CITY	*same as above
SPC/S-115	NW	Maple	El Molino	CITY	CITY	07/22/08	229		CITY	CITY	*same as above
SPC/S-115	NW	Madison	Maple	CITY	CITY	07/16/08	232		CITY	CITY	*same as above
SPC/S-115	SW	MAPLE	MADISON	CITY	CITY	07/23/08	235		CITY	CITY	*same as above
SPC/S-115	NW	MAPLE	MADISON	CITY	CITY	07/22/08	238		CITY	CITY	*same as above
SPC/S-115	NW	Maple	Los Robles	CITY	CITY	07/21/08	241		CITY	CITY	*same as above
SPC/S-115	NE	MAPLE	Garfield	CITY	CITY	07/22/08	245		CITY	CITY	*same as above
SPC/S-115	SW	MAPLE	Garfield	CITY	CITY	08/01/08	248		CITY	CITY	*same as above
SPC/S-115	NE	Vinedo	Maple	CITY	CITY	07/28/08	251		CITY	CITY	*same as above
SPC/S-115	NW	Maple	Vista	CITY	CITY	08/06/08	254		CITY	CITY	*same as above
SPC/S-115	NW	Catalina	Maple	CITY	CITY	07/21/08	257		CITY	CITY	*same as above

Col. 1	Col. 2		Col. 3	Col. 4	Col. 5	Col. 6	Col. 7	Col. 8	Col. 9	Col. 10	Col. 11
Certified FCD(s) Installed	FCD Location		Nearest Cross Street	FCD Owner	FCD Maintained By	FCD Installation Date	CB ID No. Served by FCD	CB Type	CB Owner	CB Maintained By	Frequency of FCD Maintenance and other O&M comments
SPC/S-115	NE	Mentor	Maple	CITY	CITY	07/22/08	260		CITY	CITY	*same as above
SPC/S-115	NW	Vinedo	Maple	CITY	CITY	07/17/08	263		CITY	CITY	*same as above
SPC/S-115	NW	Maple	Del Rey	CITY	CITY	07/17/08	266		CITY	CITY	*same as above
SPC/S-115	NE	Carmelo	Maple	CITY	CITY	07/24/08	270		CITY	CITY	*same as above
SPC/S-115	NW	Carmelo	Maple	CITY	CITY	07/24/08	273		CITY	CITY	*same as above
SPC/S-115	NW	Vista	Maple	CITY	CITY	07/25/08	276		CITY	CITY	*same as above
SPC/S-115	NE	Martelo	Maple	CITY	CITY	07/17/08	279		CITY	CITY	*same as above
SPC/S-115	NE	Lola	Maple	CITY	CITY	07/28/08	282		CITY	CITY	*same as above
SPC/S-115	NW2	Martelo	Maple	CITY	CITY	08/01/08	285		CITY	CITY	*same as above
SPC/S-115	NW	Lola	Maple	CITY	CITY	07/18/08	288		CITY	CITY	*same as above
SPC/S-115	NE	Oak	Maple	CITY	CITY	07/31/08	291		CITY	CITY	*same as above
SPC/S-115	NW	Oak	Maple	CITY	CITY	07/29/08	295		CITY	CITY	*same as above
SPC/S-115	NE	Linda Rosa	Maple	CITY	CITY	08/11/08	298		CITY	CITY	*same as above
SPC/S-115	NW	Linda Rosa	Maple	CITY	CITY	07/18/08	301		CITY	CITY	*same as above
SPC/S-115	NE2	Linda Rosa	Maple	CITY	CITY	07/18/08	304		CITY	CITY	*same as above
SPC/S-115	NE	Palo Verde	Maple	CITY	CITY	07/24/08	307		CITY	CITY	*same as above
SPC/S-115	NE	Holliston	Maple	CITY	CITY	07/15/08	310		CITY	CITY	*same as above
SPC/S-115	NW	Holliston	Maple	CITY	CITY	07/22/08	313		CITY	CITY	*same as above

Col. 1	Col. 2		Col. 3	Col. 4	Col. 5	Col. 6	Col. 7	Col. 8	Col. 9	Col. 10	Col. 11
Certified FCD(s) Installed	FCD Location		Nearest Cross Street	FCD Owner	FCD Maintained By	FCD Installation Date	CB ID No. Served by FCD	CB Type	CB Owner	CB Maintained By	Frequency of FCD Maintenance and other O&M comments
SPC/S-115	NW3	Michigan	Maple	CITY	CITY	07/30/08	316		CITY	CITY	*same as above
SPC/S-115	NE4	Michigan	Maple	CITY	CITY	07/30/08	320		CITY	CITY	*same as above
SPC/S-115	NE	Michigan	Maple	CITY	CITY	07/30/08	323		CITY	CITY	*same as above
SPC/S-115	NE2	Michigan	Maple	CITY	CITY	08/01/08	326		CITY	CITY	*same as above
SPC/S-115	NW	Michigan	Maple	CITY	CITY	08/07/08	329		CITY	CITY	*same as above
SPC/S-115	NW	Mar Vista	Maple	CITY	CITY	08/07/08	332		CITY	CITY	*same as above
SPC/S-115	NW	Mar Vista	Maple	CITY	CITY	07/31/08	335		CITY	CITY	*same as above
SPC/S-115	NE	Catalina	Maple	CITY	CITY	07/29/08	338		CITY	CITY	*same as above
SPC/S-115	NE2	Catalina	Maple	CITY	CITY	08/13/08	341		CITY	CITY	*same as above
SPC/S-115	NE3	Lake	Maple	CITY	CITY	08/01/08	345		CITY	CITY	*same as above
SPC/S-115	NW	Lake	Maple	CITY	CITY	08/14/08	348		CITY	CITY	*same as above
SPC/S-115	NW3	Lake	Maple	CITY	CITY	08/08/08	351		CITY	CITY	*same as above
SPC/S-115	South	Maple	w/o Lake	CITY	CITY	08/12/08	354		CITY	CITY	*same as above
SPC/S-115	NE	Madison	Maple	CITY	CITY	08/12/08	357		CITY	CITY	*same as above
SPC/S-115	NE2	Madison	Maple	CITY	CITY	08/12/08	360		CITY	CITY	*same as above
SPC/S-115	NE	Oakland	Maple	CITY	CITY	07/31/08	363		CITY	CITY	*same as above
SPC/S-115	NW2	Oakland	Maple	CITY	CITY	08/13/08	366		CITY	CITY	*same as above
SPC/S-115	NE	Euclid	Maple	CITY	CITY	08/01/08	370		CITY	CITY	*same as above

Col. 1	Col. 2		Col. 3	Col. 4	Col. 5	Col. 6	Col. 7	Col. 8	Col. 9	Col. 10	Col. 11
Certified FCD(s) Installed	FCD Location		Nearest Cross Street	FCD Owner	FCD Maintained By	FCD Installation Date	CB ID No. Served by FCD	CB Type	CB Owner	CB Maintained By	Frequency of FCD Maintenance and other O&M comments
SPC/S-115	NW	Euclid	Maple	CITY	CITY	08/01/08	373		CITY	CITY	*same as above
SPC/S-115	NW	Garfield	Maple	CITY	CITY	07/28/08	376		CITY	CITY	*same as above
SPC/S-115	NE	Garfield	Maple	CITY	CITY	07/31/08	379		CITY	CITY	*same as above
SPC/S-115	NE2	Garfield	Maple	CITY	CITY	07/31/08	382		CITY	CITY	*same as above
SPC/S-115	NW2	Garfield	Maple	CITY	CITY	08/01/08	385		CITY	CITY	*same as above
SPC/S-115	NE	Bella Vista	Maple	CITY	CITY	08/12/08	388		CITY	CITY	*same as above
SPC/S-115	NE	Maple	Fair Oaks	CITY	CITY	08/04/08	391		CITY	CITY	*same as above
SPC/S-115	NW	Raymond	Maple	CITY	CITY	07/31/08	395		CITY	CITY	*same as above
SPC/S-115	NW2	Raymond	Maple	CITY	CITY	08/12/08	398		CITY	CITY	*same as above
SPC/S-115	NE2	Raymond	Maple	CITY	CITY	07/31/08	401		CITY	CITY	*same as above
SPC/S-115	NW	Summit	Maple	CITY	CITY	07/31/08	404		CITY	CITY	*same as above
SPC/S-115	NW2	Summit	Maple	CITY	CITY	07/31/08	407		CITY	CITY	*same as above
SPC/S-115	NW3	Summit	Maple	CITY	CITY	07/31/08	410		CITY	CITY	*same as above
SPC/S-115	NE	Summit	Maple	CITY	CITY	08/13/08	413		CITY	CITY	*same as above
SPC/S-115	NE	Hamilton	Maple	CITY	CITY	08/13/08	416		CITY	CITY	*same as above
SPC/S-115	NE2	Summit	Maple	CITY	CITY	08/14/08	420		CITY	CITY	*same as above
SPC/S-115	NE	Maple	Townsend	CITY	CITY	08/13/08	423		CITY	CITY	*same as above
SPC/S-115	S	Maple	Townsend	CITY	CITY	08/08/08	426		CITY	CITY	*same as above

Col. 1	Col. 2		Col. 3	Col. 4	Col. 5	Col. 6	Col. 7	Col. 8	Col. 9	Col. 10	Col. 11
Certified FCD(s) Installed	FCD Location		Nearest Cross Street	FCD Owner	FCD Maintained By	FCD Installation Date	CB ID No. Served by FCD	CB Type	CB Owner	CB Maintained By	Frequency of FCD Maintenance and other O&M comments
SPC/S-115	NW	DOMINION	WASHINGTON	CITY	CITY	08/04/08	429		CITY	CITY	*same as above
SPC/S-115	NE	Washington	Sinaloa	CITY	CITY	08/04/08	432		CITY	CITY	*same as above
SPC/S-115	NW	Washington	Oxford	CITY	CITY	08/01/08	435		CITY	CITY	*same as above
SPC/S-115	SW	Lambert	Sierra Madre	CITY	CITY	08/14/08	438		CITY	CITY	*same as above
SPC/S-115	Median	Sierra Madre	Orange Grove	CITY	CITY	08/04/08	441		CITY	CITY	*same as above
SPC/S-115	NW	Sierra Madre	Orange Grove	CITY	CITY	08/07/08	445		CITY	CITY	*same as above
SPC/S-115	NE	Sierra Madre	EATON	CITY	CITY	08/13/08	448		CITY	CITY	*same as above
SPC/S-115	NW	Rose	Cooley	CITY	CITY	08/04/08	451		CITY	CITY	*same as above
SPC/S-115	NE2	Rose	Cooley	CITY	CITY	08/04/08	454		CITY	CITY	*same as above
SPC/S-115	SE	Rose	Cooley	CITY	CITY	08/04/08	457		CITY	CITY	*same as above
SPC/S-115	NW	Altadena	White	CITY	CITY	08/14/08	460		CITY	CITY	*same as above
SPC/S-115	NW	WHITE	ALTADENA	CITY	CITY	08/01/08	463		CITY	CITY	*same as above
SPC/S-115	NW	MAPLE	ALTADENA	CITY	CITY	08/07/08	466		CITY	CITY	*same as above
SPC/S-115	NE	Altadena	White	CITY	CITY	08/06/08	470		CITY	CITY	*same as above
SPC/S-115	SW	VILLA	ALTADENA	CITY	CITY	08/14/08	473		CITY	CITY	*same as above
SPC/S-115	NE	Arroyo Blvd	Seco	CITY	CITY	08/07/08	476		CITY	CITY	*same as above
SPC/S-115	NW	Arroyo Blvd	Seco	CITY	CITY	08/07/08	479		CITY	CITY	*same as above
SPC/S-115	SE	ROSEMONT	Seco	CITY	CITY	08/04/08	482		CITY	CITY	*same as above

Col. 1	Col. 2		Col. 3	Col. 4	Col. 5	Col. 6	Col. 7	Col. 8	Col. 9	Col. 10	Col. 11
Certified FCD(s) Installed	FCD Location		Nearest Cross Street	FCD Owner	FCD Maintained By	FCD Installation Date	CB ID No. Served by FCD	CB Type	CB Owner	CB Maintained By	Frequency of FCD Maintenance and other O&M comments
SPC/S-115	NE	Arroyo Blvd	Rosemont	CITY	CITY	08/14/08	485		CITY	CITY	*same as above
SPC/S-115	NW	Lincoln	Washington	CITY	CITY	08/04/08	488		CITY	CITY	*same as above
SPC/S-115	NE	Lincoln	Washington	CITY	CITY	08/12/08	491		CITY	CITY	*same as above
SPC/S-115	NW	Lincoln	Washington	CITY	CITY	08/06/08	495		CITY	CITY	*same as above
SPC/S-115	NE2	Lincoln	Washington	CITY	CITY	08/04/08	498		CITY	CITY	*same as above
SPC/S-115	NE	Lincoln	Washington	CITY	CITY	08/07/08	501		CITY	CITY	*same as above
SPC/S-115	NW	Lincoln	Washington	CITY	CITY	08/06/08	504		CITY	CITY	*same as above
SPC/S-115	NE	DEL MAR BLVD.	Hudson	CITY	CITY	08/07/08	507		CITY	CITY	*same as above
SPC/S-115	NE	Hudson	Del Mar	CITY	CITY	08/05/08	510		CITY	CITY	*same as above
SPC/S-115	NW	Hudson	Del Mar	CITY	CITY	08/05/08	513		CITY	CITY	*same as above
SPC/S-115	NW	DEL MAR BLVD.	Hudson	CITY	CITY	08/07/08	516		CITY	CITY	*same as above
SPC/S-115	SW	DEL MAR BLVD.	Hudson	CITY	CITY	08/07/08	520		CITY	CITY	*same as above
SPC/S-115	NE	Oak Knoll	Del Mar	CITY	CITY	08/05/08	523		CITY	CITY	*same as above
SPC/S-115	NW	Oak Knoll	Del Mar	CITY	CITY	08/06/08	526		CITY	CITY	*same as above
SPC/S-115	NW	DEL MAR BLVD.	Oak Knoll	CITY	CITY	08/05/08	529		CITY	CITY	*same as above
SPC/S-115	SW	DEL MAR BLVD.	Oak Knoll	CITY	CITY	08/07/08	532		CITY	CITY	*same as above



Col. 1	Col. 2		Col. 3	Col. 4	Col. 5	Col. 6	Col. 7	Col. 8	Col. 9	Col. 10	Col. 11
Certified FCD(s) Installed	FCD Location		Nearest Cross Street	FCD Owner	FCD Maintained By	FCD Installation Date	CB ID No. Served by FCD	CB Type	CB Owner	CB Maintained By	Frequency of FCD Maintenance and other O&M comments
SPC/S-115	SW	DEL MAR BLVD.	El Molino	CITY	CITY	08/05/08	535		CITY	CITY	*same as above
SPC/S-115	NW	Colorado	De Lacey	CITY	CITY	08/04/08	538		CITY	CITY	*same as above
SPC/S-115	NE	Raymond	Colorado	CITY	CITY	08/14/08	541		CITY	CITY	*same as above
SPC/S-115	NW	Fair Oaks	Colorado	CITY	CITY	08/04/08	545		CITY	CITY	*same as above
SPC/S-115		ARROYO BLVD.		CITY	CITY	08/05/08	548		CITY	CITY	*same as above
SPC/S-115		ARROYO BLVD.		CITY	CITY	08/06/08	551		CITY	CITY	*same as above
SPC/S-115		ARROYO BLVD.		CITY	CITY	08/06/08	554		CITY	CITY	*same as above
SPC/S-115	NE	Colorado	Michigan	CITY	CITY	08/05/08	557		CITY	CITY	*same as above
SPC/S-115	NW	Painter	MARENGO AVE.	CITY	CITY	08/15/08	560		CITY	CITY	*same as above
SPC/S-115	NW	MARENGO AVE.	Mountain	CITY	CITY	08/06/08	563		CITY	CITY	*same as above
SPC/S-115	NE	MARENGO AVE.	Mountain	CITY	CITY	08/06/08	566		CITY	CITY	*same as above
SPC/S-115	NW	Summit	Painter	CITY	CITY	08/06/08	570		CITY	CITY	*same as above
SPC/S-115	NE	Summit	Painter	CITY	CITY	08/06/08	573		CITY	CITY	*same as above
SPC/S-115	NW	Painter	Summit	CITY	CITY	08/08/08	576		CITY	CITY	*same as above
SPC/S-115	NE	MARENGO AVE.	Orange Grove	CITY	CITY	08/15/08	579		CITY	CITY	*same as above

Col. 1	Col. 2		Col. 3	Col. 4	Col. 5	Col. 6	Col. 7	Col. 8	Col. 9	Col. 10	Col. 11
Certified FCD(s) Installed	FCD Location		Nearest Cross Street	FCD Owner	FCD Maintained By	FCD Installation Date	CB ID No. Served by FCD	CB Type	CB Owner	CB Maintained By	Frequency of FCD Maintenance and other O&M comments
SPC/S-115	NW	MARENGO AVE.	Orange Grove	CITY	CITY	08/15/08	582		CITY	CITY	*same as above
SPC/S-115	NW	Mountain	Marengo	CITY	CITY	08/15/08	585		CITY	CITY	*same as above
SPC/S-115	NE	Paloma	HILL AVE.	CITY	CITY	08/15/08	588		CITY	CITY	*same as above
SPC/S-115	NE	HILL AVE.	Paloma	CITY	CITY	08/12/08	591		CITY	CITY	*same as above
SPC/S-115	NW	HILL AVE.	Loma Vista	CITY	CITY	08/12/08	595		CITY	CITY	*same as above
SPC/S-115	NE	Loma Vista	HILL AVE.	CITY	CITY	08/15/08	598		CITY	CITY	*same as above
SPC/S-115	NE	HILL AVE.	Loma Vista	CITY	CITY	08/07/08	601		CITY	CITY	*same as above
SPC/S-115	SE	Mountain	HILL AVE.	CITY	CITY	08/15/08	604		CITY	CITY	*same as above
SPC/S-115	NE	Mountain	HILL AVE.	CITY	CITY	08/07/08	607		CITY	CITY	*same as above
SPC/S-115	NE	HILL AVE.	Mountain	CITY	CITY	07/09/08	610		CITY	CITY	*same as above
SPC/S-115	NE	Whitefield	HILL AVE.	CITY	CITY	08/06/08	613		CITY	CITY	*same as above
SPC/S-115	NW	HILL AVE.	Washington	CITY	CITY	08/15/08	616		CITY	CITY	*same as above
SPC/S-115	NW	HILL AVE.	Washington	CITY	CITY	08/15/08	620		CITY	CITY	*same as above
SPC/S-115	NW	MICHILLINDA BLVD.	Cartwright	CITY	CITY	08/12/08	623		CITY	CITY	*same as above
SPC/S-115	S	SKYCREST DR.	PARK VISTA DR.	CITY	CITY	07/07/08	626		CITY	CITY	*same as above
SPC/S-115	SW	PARK VISTA DR.	PARK VISTA CIR.	CITY	CITY	07/07/08	629		CITY	CITY	*same as above
SPC/S-115		PARK VISTA DR.	SKYCREST DR	CITY	CITY	07/07/08	632		CITY	CITY	*same as above

Col. 1	Col. 2	Col. 3	Col. 4	Col. 5	Col. 6	Col. 7	Col. 8	Col. 9	Col. 10	Col. 11
Certified FCD(s) Installed	FCD Location	Nearest Cross Street	FCD Owner	FCD Maintained By	FCD Installation Date	CB ID No. Served by FCD	CB Type	CB Owner	CB Maintained By	Frequency of FCD Maintenance and other O&M comments
SPC/S-115	San Rafael Ter	San Rafael Ave	CITY	CITY	10/06/11	635		CITY	CITY	*same as above
SPC/S-115	DEL MAR BLVD.	Sierra Bonita	CITY	CITY	08/15/08	638		CITY	CITY	*same as above
SPC/S-115	DEL MAR BLVD.	Roosevelt	CITY	CITY	08/14/08	641		CITY	CITY	*same as above
SPC/S-115	Roosevelt	DEL MAR BLVD.	CITY	CITY	08/14/08	645		CITY	CITY	*same as above
SPC/S-115	DEL MAR BLVD.	El Nido	CITY	CITY	08/12/08	648		CITY	CITY	*same as above
SPC/S-115	El Nido	DEL MAR BLVD.	CITY	CITY	08/15/08	651		CITY	CITY	*same as above
SPC/S-115	Sunnyslope	DEL MAR BLVD.	CITY	CITY	07/10/08	654		CITY	CITY	*same as above
SPC/S-115	Sunnyslope	DEL MAR BLVD.	CITY	CITY	07/10/08	657		CITY	CITY	*same as above
SPC/S-115	DEL MAR BLVD.	Sunnyslope	CITY	CITY	07/11/08	660		CITY	CITY	*same as above
SPC/S-115	Eastern	DEL MAR BLVD.	CITY	CITY	07/10/08	663		CITY	CITY	*same as above
SPC/S-115	Eastern	DEL MAR BLVD.	CITY	CITY	07/07/08	666		CITY	CITY	*same as above
SPC/S-115	DEL MAR BLVD.	Eastern	CITY	CITY	07/10/08	670		CITY	CITY	*same as above
SPC/S-115	Daisy	DEL MAR BLVD.	CITY	CITY	07/09/08	673		CITY	CITY	*same as above
SPC/S-115	Daisy	DEL MAR BLVD.	CITY	CITY	07/11/08	676		CITY	CITY	*same as above
SPC/S-115	DEL MAR BLVD.	Daisy	CITY	CITY	07/11/08	679		CITY	CITY	*same as above

Col. 1	Col. 2	Col. 3	Col. 4	Col. 5	Col. 6	Col. 7	Col. 8	Col. 9	Col. 10	Col. 11
Certified FCD(s) Installed	FCD Location	Nearest Cross Street	FCD Owner	FCD Maintained By	FCD Installation Date	CB ID No. Served by FCD	CB Type	CB Owner	CB Maintained By	Frequency of FCD Maintenance and other O&M comments
SPC/S-115	DEL MAR BLVD.	Daisy	CITY	CITY	08/15/08	682		CITY	CITY	*same as above
SPC/S-115	San Gabriel	DEL MAR BLVD.	CITY	CITY	07/11/08	685		CITY	CITY	*same as above
SPC/S-115	San Gabriel	DEL MAR BLVD.	CITY	CITY	07/08/08	688		CITY	CITY	*same as above
SPC/S-115	DEL MAR BLVD.	San Gabriel	CITY	CITY	07/14/08	691		CITY	CITY	*same as above
SPC/S-115	ELIZABETH ST.	MAR VISTA AVE	CITY	CITY	07/07/08	695		CITY	CITY	*same as above
SPC/S-115	ELIZABETH ST.	Holliston	CITY	CITY	08/11/08	698		CITY	CITY	*same as above
SPC/S-115	Holliston	ELIZABETH ST.	CITY	CITY	07/09/08	701		CITY	CITY	*same as above
SPC/S-115	El Nido	COLORADO BLVD.	CITY	CITY	08/13/08	704		CITY	CITY	*same as above
SPC/S-115	COLORADO BLVD.	El Nido	CITY	CITY	07/08/08	707		CITY	CITY	*same as above
SPC/S-115	COLORADO BLVD.	El Nido	CITY	CITY	08/12/08	710		CITY	CITY	*same as above
SPC/S-115	El Nido	COLORADO BLVD.	CITY	CITY	08/13/08	713		CITY	CITY	*same as above
SPC/S-115	Sunnyslope	COLORADO BLVD.	CITY	CITY	07/08/08	716		CITY	CITY	*same as above
SPC/S-115	Sunnyslope	COLORADO BLVD.	CITY	CITY	07/09/08	720		CITY	CITY	*same as above
SPC/S-115	COLORADO BLVD.	Sunnyslope	CITY	CITY	07/10/08	723		CITY	CITY	*same as above

Col. 1	Col. 2	Col. 3	Col. 4	Col. 5	Col. 6	Col. 7	Col. 8	Col. 9	Col. 10	Col. 11
Certified FCD(s) Installed	FCD Location	Nearest Cross Street	FCD Owner	FCD Maintained By	FCD Installation Date	CB ID No. Served by FCD	CB Type	CB Owner	CB Maintained By	Frequency of FCD Maintenance and other O&M comments
SPC/S-115	Daisy	COLORADO BLVD.	CITY	CITY	07/14/08	726		CITY	CITY	*same as above
SPC/S-115	COLORADO BLVD.	San Gabriel	CITY	CITY	06/29/08	729		CITY	CITY	*same as above
SPC/S-115	Nina	San Gabriel	CITY	CITY	07/01/08	732		CITY	CITY	*same as above
SPC/S-115	San Gabriel	Nina	CITY	CITY	07/02/08	735		CITY	CITY	*same as above
SPC/S-115	San Gabriel	Nina	CITY	CITY	07/03/08	738		CITY	CITY	*same as above
SPC/S-115	WALNUT ST.	San Gabriel	CITY	CITY	07/03/08	741		CITY	CITY	*same as above
SPC/S-115	San Gabriel	Walnut	CITY	CITY	08/15/08	745		CITY	CITY	*same as above
SPC/S-115	San Gabriel	Walnut	CITY	CITY	08/16/08	748		CITY	CITY	*same as above
SPC/S-115	BELLEVUE DR.	Raymond	CITY	CITY	08/08/08	751		CITY	CITY	*same as above
SPC/S-115	Raymond	BELLEVUE DR.	CITY	CITY	06/30/08	754		CITY	CITY	*same as above
SPC/S-115	Raymond	BELLEVUE DR.	CITY	CITY	07/01/08	757		CITY	CITY	*same as above
SPC/S-115	PICO ST.	Arroyo Pkwy	CITY	CITY	07/08/08	760		CITY	CITY	*same as above
SPC/S-115	PICO ST.	Raymond	CITY	CITY	07/09/08	763		CITY	CITY	*same as above
SPC/S-115	Raymond	PICO ST.	CITY	CITY	07/10/08	766		CITY	CITY	*same as above
SPC/S-115	PICO ST.	Raymond	CITY	CITY	07/01/08	770		CITY	CITY	*same as above
SPC/S-115	FILLMORE ST.	Raymond	CITY	CITY	08/11/08	773		CITY	CITY	*same as above

**Certified Full Capture Systems Database**

Col. 1	Col. 2	Col. 3	Col. 4	Col. 5	Col. 6	Col. 7	Col. 8	Col. 9	Col. 10	Col. 11
Certified FCD(s) Installed	FCD Location	Nearest Cross Street	FCD Owner	FCD Maintained By	FCD Installation Date	CB ID No. Served by FCD	CB Type	CB Owner	CB Maintained By	Frequency of FCD Maintenance and other O&M comments
SPC/S-115	Raymond	FILLMORE ST.	CITY	CITY	07/01/08	776		CITY	CITY	*same as above
SPC/S-115	FILLMORE ST.	Raymond	CITY	CITY	07/01/08	779		CITY	CITY	*same as above
SPC/S-115	FILLMORE ST.	Raymond	CITY	CITY	07/14/08	782		CITY	CITY	*same as above
SPC/S-115	Hastings Ranch DR	SEARS	CITY	CITY	08/08/08	785		CITY	CITY	*same as above
SPC/S-115	SIERRA MADRE BLVD.	CYNTHIA AVE	CITY	CITY	08/11/08	788		CITY	CITY	*same as above
SPC/S-115	Medford	SIERRA MADRE BLVD	CITY	CITY	08/11/08	791		CITY	CITY	*same as above
SPC/S-115	Medford	SIERRA MADRE BLVD	CITY	CITY	08/11/08	795		CITY	CITY	*same as above
SPC/S-115	Hastings Ranch	SIERRA MADRE BLVD	CITY	CITY	08/11/08	798		CITY	CITY	*same as above
SPC/S-115	La Tierra	SIERRA MADRE BLVD	CITY	CITY	08/08/08	801		CITY	CITY	*same as above
SPC/S-115	SIERRA MADRE VILLA AVE.	Estado	CITY	CITY	08/08/08	804		CITY	CITY	*same as above
SPC/S-115	SIERRA MADRE VILLA AVE.	Alameda	CITY	CITY	08/11/08	807		CITY	CITY	*same as above
SPC/S-115	Del Vina	SIERRA MADRE VILL	CITY	CITY	08/08/08	810		CITY	CITY	*same as above

Col. 1	Col. 2		Col. 3	Col. 4	Col. 5	Col. 6	Col. 7	Col. 8	Col. 9	Col. 10	Col. 11
Certified FCD(s) Installed	FCD Location		Nearest Cross Street	FCD Owner	FCD Maintained By	FCD Installation Date	CB ID No. Served by FCD	CB Type	CB Owner	CB Maintained By	Frequency of FCD Maintenance and other O&M comments
SPC/S-115		SIERRA MADRE VILLA AVE.	Orange Grove	CITY	CITY	08/08/08	813		CITY	CITY	*same as above
SPC/S-115		SIERRA MADRE VILLA AVE.	Rida	CITY	CITY	08/08/08	816		CITY	CITY	*same as above
SPC/S-115		Arroyo Pkwy	Glenarm	CITY	CITY	09/29/11	820		CITY	CITY	*same as above
SPC/S-115		Arroyo Pkwy	Fillmore/Glenarm	CITY	CITY	09/29/11	823		CITY	CITY	*same as above
SPC/S-115		Arroyo Pkwy	Fillmore/Glenarm	CITY	CITY	09/26/11	826		CITY	CITY	*same as above
SPC/S-115		Arroyo Pkwy	Fillmore/Glenarm	CITY	CITY	10/10/11	829		CITY	CITY	*same as above
SPC/S-115		Fillmore	Arroyo Pkwy	CITY	CITY	09/23/11	832		CITY	CITY	*same as above
SPC/S-115		Arroyo Pkwy	Fillmore	CITY	CITY	10/10/11	835		CITY	CITY	*same as above
SPC/S-115		Pico	Arroyo Pkwy	CITY	CITY	09/23/11	838		CITY	CITY	*same as above
SPC/S-115		Arroyo Pkwy	Pico	CITY	CITY	09/23/11	841		CITY	CITY	*same as above
SPC/S-115		California	Arroyo Pkwy	CITY	CITY	09/27/11	845		CITY	CITY	*same as above
SPC/S-115		Arroyo Pkwy	California	CITY	CITY	09/28/11	848		CITY	CITY	*same as above
SPC/S-115		Bellevue	Arroyo Pkwy	CITY	CITY	09/23/11	851		CITY	CITY	*same as above
SPC/S-115		Arroyo Pkwy	Green/Cordova	CITY	CITY	10/11/11	854		CITY	CITY	*same as above
SPC/S-115		Arroyo Pkwy	Green	CITY	CITY	09/22/11	857		CITY	CITY	*same as above

Col. 1	Col. 2	Col. 3	Col. 4	Col. 5	Col. 6	Col. 7	Col. 8	Col. 9	Col. 10	Col. 11
Certified FCD(s) Installed	FCD Location	Nearest Cross Street	FCD Owner	FCD Maintained By	FCD Installation Date	CB ID No. Served by FCD	CB Type	CB Owner	CB Maintained By	Frequency of FCD Maintenance and other O&M comments
SPC/S-115	Arroyo Pkwy	Green	CITY	CITY	09/30/11	860		CITY	CITY	*same as above
SPC/S-115	Arroyo Pkwy	Union	CITY	CITY	09/30/11	863		CITY	CITY	*same as above
SPC/S-115	Marengo	WALNUT ST.	CITY	CITY	05/15/09	866		CITY	CITY	*same as above
SPC/S-115	Marengo	WALNUT ST.	CITY	CITY	05/15/09	870		CITY	CITY	*same as above
SPC/S-115	WALNUT ST.	Marengo	CITY	CITY	05/16/09	873		CITY	CITY	*same as above
SPC/S-115	Garfield	WALNUT ST.	CITY	CITY	05/15/09	876		CITY	CITY	*same as above
SPC/S-115	WALNUT ST.	Los Robles	CITY	CITY	07/15/09	879		CITY	CITY	*same as above
SPC/S-115	Raymond	WALNUT ST.	CITY	CITY	07/15/09	882		CITY	CITY	*same as above
SPC/S-115	WALNUT ST.	Raymond/Fair Oaks	CITY	CITY	07/15/09	885		CITY	CITY	*same as above
SPC/S-115	WALNUT ST.	Raymond/Fair Oaks	CITY	CITY	07/15/09	888		CITY	CITY	*same as above
SPC/S-115	Fair Oaks	WALNUT ST.	CITY	CITY	07/15/09	891		CITY	CITY	*same as above
SPC/S-115	WALNUT ST.	Fair Oaks	CITY	CITY	07/16/09	895		CITY	CITY	*same as above
SPC/S-115	Del Mar	Raymond	CITY	CITY	05/15/09	898		CITY	CITY	*same as above
SPC/S-115	Raymond	Del Mar	CITY	CITY	05/16/09	901		CITY	CITY	*same as above
SPC/S-115	Fair Oaks	Del Mar	CITY	CITY	07/15/09	904		CITY	CITY	*same as above
SPC/S-115	Fair Oaks	Del Mar	CITY	CITY	05/15/09	907		CITY	CITY	*same as above



Col. 1	Col. 2	Col. 3	Col. 4	Col. 5	Col. 6	Col. 7	Col. 8	Col. 9	Col. 10	Col. 11
Certified FCD(s) Installed	FCD Location	Nearest Cross Street	FCD Owner	FCD Maintained By	FCD Installation Date	CB ID No. Served by FCD	CB Type	CB Owner	CB Maintained By	Frequency of FCD Maintenance and other O&M comments
SPC/S-115	DEL MAR BLVD.	Fair Oaks	CITY	CITY	07/15/09	910		CITY	CITY	*same as above
SPC/S-115	Del Mar	De Lacey	CITY	CITY	05/14/09	913		CITY	CITY	*same as above
SPC/S-115	Pasadena	DEL MAR BLVD.	CITY	CITY	05/15/09	916		CITY	CITY	*same as above
SPC/S-115	CALIFORNIA BLVD.	Fair Oaks	CITY	CITY	07/15/09	920		CITY	CITY	*same as above
SPC/S-115	GLENARM ST.	Arroyo Pkwy	CITY	CITY	05/15/09	923		CITY	CITY	*same as above
SPC/S-115	GLENARM ST.	Arroyo Pkwy	CITY	CITY	07/15/09	926		CITY	CITY	*same as above
SPC/S-115	GLENARM ST.	Raymond	CITY	CITY	05/15/09	929		CITY	CITY	*same as above
SPC/S-115	GLENARM ST.	Fair Oaks	CITY	CITY	05/15/09	932		CITY	CITY	*same as above
SPC/S-115	UNION ST.	Arroyo Pkwy	CITY	CITY	07/15/09	935		CITY	CITY	*same as above
SPC/S-115	UNION ST.	Raymond	CITY	CITY	07/15/09	938		CITY	CITY	*same as above
SPC/S-115	UNION ST.	Raymond	CITY	CITY	07/15/09	941		CITY	CITY	*same as above
SPC/S-115	UNION ST.	Arroyo Pkwy	CITY	CITY	05/15/09	945		CITY	CITY	*same as above
SPC/S-115	UNION ST.	Arroyo Pkwy	CITY	CITY	05/16/09	948		CITY	CITY	*same as above
SPC/S-115	Marengo	UNION ST.	CITY	CITY	05/15/09	951		CITY	CITY	*same as above
SPC/S-115	Marengo	UNION ST.	CITY	CITY	05/15/09	954		CITY	CITY	*same as above

Col. 1	Col. 2		Col. 3	Col. 4	Col. 5	Col. 6	Col. 7	Col. 8	Col. 9	Col. 10	Col. 11
Certified FCD(s) Installed	FCD Location		Nearest Cross Street	FCD Owner	FCD Maintained By	FCD Installation Date	CB ID No. Served by FCD	CB Type	CB Owner	CB Maintained By	Frequency of FCD Maintenance and other O&M comments
SPC/S-115		FOOTHILL BLVD.	Sunnyslope	CITY	CITY	05/15/09	957		CITY	CITY	*same as above
SPC/S-115		SUNNYSLOPE	La Tierra	CITY	CITY	05/16/09	960		CITY	CITY	*same as above
SPC/S-115		SIERRA MADRE VILLa	Las Lunas/Del Vina	CITY	CITY	05/15/09	963		CITY	CITY	*same as above
SPC/S-115		Rutherford	EL MIRADOR	CITY	CITY	07/15/09	966		CITY	CITY	*same as above
SPC/S-115		Linda Vista Ave	Afton	CITY	CITY	07/15/09	970		CITY	CITY	*same as above
SPC/S-115		Linda Vista Ave	Afton	CITY	CITY	05/15/09	973		CITY	CITY	*same as above
SPC/S-115		Lancashire Pl	LIDA ST.	CITY	CITY	07/15/09	976		CITY	CITY	*same as above
SPC/S-115		Knollwood Dr	LIDA ST.	CITY	CITY	07/14/09	979		CITY	CITY	*same as above
SPC/S-115	SW	Pegfair Ln	LIDA ST.	CITY	CITY	07/15/09	982		CITY	CITY	*same as above
SPC/S-115	S	Pegfair Estates	Pegfair Ln	CITY	CITY	07/15/09	985		CITY	CITY	*same as above
SPC/S-115		Knollwood Dr	See Map	CITY	CITY	07/15/09	988		CITY	CITY	*same as above
SPC/S-115		Knollwood Dr	See Map	CITY	CITY	05/15/09	991		CITY	CITY	*same as above
SPC/S-115		Knollwood Ter	See Map	CITY	CITY	05/15/09	995		CITY	CITY	*same as above
SPC/S-115	N	Lincoln	Cul-de-sac (See Map)	CITY	CITY	05/15/09	998		CITY	CITY	*same as above
SPC/S-115	NW	Glen	Hammond	CITY	CITY	05/16/09	1001		CITY	CITY	*same as above
SPC/S-115	NE	PROSPECT Blvd	n/o Seco	CITY	CITY	05/17/09	1004		CITY	CITY	*same as above

**Certified Full Capture Systems Database**

Col. 1	Col. 2		Col. 3	Col. 4	Col. 5	Col. 6	Col. 7	Col. 8	Col. 9	Col. 10	Col. 11
Certified FCD(s) Installed	FCD Location		Nearest Cross Street	FCD Owner	FCD Maintained By	FCD Installation Date	CB ID No. Served by FCD	CB Type	CB Owner	CB Maintained By	Frequency of FCD Maintenance and other O&M comments
SPC/S-115	NW	PROSPECT Blvd	n/o Seco	CITY	CITY	05/18/09	1007		CITY	CITY	*same as above
SPC/S-115	NW	PROSPECT Blvd	Armada	CITY	CITY	05/19/09	1010		CITY	CITY	*same as above
SPC/S-115	NE	MOUNTAIN ST	Fair Oaks	CITY	CITY	07/15/09	1013		CITY	CITY	*same as above
SPC/S-115	SE	BLAKE	Cypress Way	CITY	CITY	07/15/09	1016		CITY	CITY	*same as above
SPC/S-115	W	BLAKE	Cypress Way	CITY	CITY	07/15/09	1020		CITY	CITY	*same as above
SPC/S-115	NE	HOLLY ST.	Arroyo Pkwy	CITY	CITY	07/15/09	1023		CITY	CITY	*same as above
SPC/S-115	NE	Marengo	HOLLY ST.	CITY	CITY	05/15/09	1026		CITY	CITY	*same as above
SPC/S-115		DOREMUS RD.	South End	CITY	CITY	07/15/09	1029		CITY	CITY	*same as above
SPC/S-115	NW	DOREMUS RD.	Cresthaven Dr	CITY	CITY	05/15/09	1032		CITY	CITY	*same as above
SPC/S-115	NW	Cresthaven Dr	DOREMUS RD.	CITY	CITY	05/15/09	1035		CITY	CITY	*same as above
SPC/S-115	NE	Terrace Dr	GREEN ST.	CITY	CITY	05/15/09	1038		CITY	CITY	*same as above
SPC/S-115	SW	GREEN ST.	Terrace Dr	CITY	CITY	07/15/09	1041		CITY	CITY	*same as above
SPC/S-115	NW	Rosemead	Halstead	CITY	CITY	09/29/11	1045		CITY	CITY	*same as above
SPC/S-115	NW	Lincoln	CYPRESS AVE.	CITY	CITY	05/15/09	1048		CITY	CITY	*same as above
SPC/S-115	NE	LINCOLN AVE.	Maple	CITY	CITY	05/16/09	1051		CITY	CITY	*same as above
SPC/S-115	SE	LINCOLN AVE.	Eureka	CITY	CITY	05/17/09	1054		CITY	CITY	*same as above
SPC/S-115	NE	CYPRESS AVE.	Maple	CITY	CITY	05/14/09	1057		CITY	CITY	*same as above

Col. 1	Col. 2		Col. 3	Col. 4	Col. 5	Col. 6	Col. 7	Col. 8	Col. 9	Col. 10	Col. 11
Certified FCD(s) Installed	FCD Location		Nearest Cross Street	FCD Owner	FCD Maintained By	FCD Installation Date	CB ID No. Served by FCD	CB Type	CB Owner	CB Maintained By	Frequency of FCD Maintenance and other O&M comments
SPC/S-115	NE	CYPRESS AVE.	Maple	CITY	CITY	05/15/09	1060		CITY	CITY	*same as above
SPC/S-115	NE	Villa	LINCOLN AVE.	CITY	CITY	05/15/09	1063		CITY	CITY	*same as above
SPC/S-115	NE	Peoria	LINCOLN AVE.	CITY	CITY	07/15/09	1066		CITY	CITY	*same as above
SPC/S-115	NE	LINCOLN AVE.	Peoria	CITY	CITY	05/15/09	1070		CITY	CITY	*same as above
SPC/S-115	NE	Orange Grove	LINCOLN AVE.	CITY	CITY	05/16/09	1073		CITY	CITY	*same as above
SPC/S-115	NE	EL MOLINO AVE.	Bonita	CITY	CITY	05/15/09	1076		CITY	CITY	*same as above
SPC/S-115	E	EL MOLINO AVE.	n/o Bonita	CITY	CITY	07/15/09	1079		CITY	CITY	*same as above
SPC/S-115	E	EL MOLINO AVE.	Woodland	CITY	CITY	05/14/09	1082		CITY	CITY	*same as above
SPC/S-115	W	EL MOLINO AVE.	n/o Woodland	CITY	CITY	05/15/09	1085		CITY	CITY	*same as above
SPC/S-115	SW	Allendale	EL MOLINO AVE.	CITY	CITY	05/15/09	1088		CITY	CITY	*same as above
SPC/S-115	NW	EL MOLINO AVE.	Allendale	CITY	CITY	05/15/09	1091		CITY	CITY	*same as above
SPC/S-115	NE	PINEHURST	Oak Knoll	CITY	CITY	05/15/09	1095		CITY	CITY	*same as above
SPC/S-115	NW	New York	Bradley	CITY	CITY	09/30/11	1098		CITY	CITY	*same as above
SPC/S-115	NW	Sinaloa	MOUNTAIN ST	CITY	CITY	05/15/09	1101		CITY	CITY	*same as above
SPC/S-115	NW	LOS ROBLES AVE.	Del Mar	CITY	CITY	05/15/09	1104		CITY	CITY	*same as above
SPC/S-115	SW	LOS ROBLES AVE.	Cordova	CITY	CITY	05/16/09	1107		CITY	CITY	*same as above

Col. 1	Col. 2		Col. 3	Col. 4	Col. 5	Col. 6	Col. 7	Col. 8	Col. 9	Col. 10	Col. 11
Certified FCD(s) Installed	FCD Location		Nearest Cross Street	FCD Owner	FCD Maintained By	FCD Installation Date	CB ID No. Served by FCD	CB Type	CB Owner	CB Maintained By	Frequency of FCD Maintenance and other O&M comments
SPC/S-115	NE	LOS ROBLES AVE.	Cordova	CITY	CITY	05/15/09	1110		CITY	CITY	*same as above
SPC/S-115	SW	Green	LOS ROBLES AVE.	CITY	CITY	07/15/09	1113		CITY	CITY	*same as above
SPC/S-115	NW	Green	LOS ROBLES AVE.	CITY	CITY	04/15/09	1116		CITY	CITY	*same as above
SPC/S-115	NE	LOS ROBLES AVE.	Green	CITY	CITY	05/14/09	1120		CITY	CITY	*same as above
SPC/S-115	NE	LOS ROBLES AVE.	Colorado	CITY	CITY	05/15/09	1123		CITY	CITY	*same as above
SPC/S-115	NW	LOS ROBLES AVE.	Colorado	CITY	CITY	05/16/09	1126		CITY	CITY	*same as above
SPC/S-115	NW	Colorado	Los Robles	CITY	CITY	05/17/09	1129		CITY	CITY	*same as above
SPC/S-115	NW	Locust	HUDSON	CITY	CITY	05/15/09	1132		CITY	CITY	*same as above
SPC/S-115	NE	Lake	HUDSON	CITY	CITY	07/15/09	1135		CITY	CITY	*same as above
SPC/S-115	NE	Holliston	Del Mar	CITY	CITY	09/27/11	1138		CITY	CITY	*same as above
SPC/S-115	NW	Holliston	Del Mar	CITY	CITY	10/07/11	1141		CITY	CITY	*same as above
SPC/S-115	NE	Chester	Del Mar	CITY	CITY	08/23/11	1145		CITY	CITY	*same as above
SPC/S-115	NW	Chester	Del Mar	CITY	CITY	08/22/11	1148		CITY	CITY	*same as above
SPC/S-115	NE	Del Mar	Chester	CITY	CITY	08/23/11	1151		CITY	CITY	*same as above
SPC/S-115	NW	Del Mar	Chester	CITY	CITY	08/23/11	1154		CITY	CITY	*same as above
SPC/S-115	NW	Villa	Eaton	CITY	CITY	08/24/11	1157		CITY	CITY	*same as above

Col. 1	Col. 2		Col. 3	Col. 4	Col. 5	Col. 6	Col. 7	Col. 8	Col. 9	Col. 10	Col. 11
Certified FCD(s) Installed	FCD Location		Nearest Cross Street	FCD Owner	FCD Maintained By	FCD Installation Date	CB ID No. Served by FCD	CB Type	CB Owner	CB Maintained By	Frequency of FCD Maintenance and other O&M comments
SPC/S-115	SW	Villa	Eaton	CITY	CITY	08/24/11	1160		CITY	CITY	*same as above
SPC/S-115	NW	Villa	Eaton	CITY	CITY	08/24/11	1163		CITY	CITY	*same as above
SPC/S-115	NW	CYPRESS AVE.	Maple	CITY	CITY	05/14/09	1166		CITY	CITY	*same as above
SPC/S-115	NW	CYPRESS AVE.	Maple	CITY	CITY	05/15/09	1170		CITY	CITY	*same as above
SPC/S-115	NW	CYPRESS AVE.	Maple	CITY	CITY	05/15/09	1173		CITY	CITY	*same as above
SPC/S-115	NE	Clinton	LINCOLN AVE.	CITY	CITY	05/15/09	1176		CITY	CITY	*same as above
SPC/S-115	SW	LINCOLN AVE.	Clinton	CITY	CITY	05/15/09	1179		CITY	CITY	*same as above
SPC/S-115	S	New York	Bradley/Sierra Madre	CITY	CITY	10/06/11	1182		CITY	CITY	*same as above
SPC/S-115	N	New York	Bradley/Sierra Madre	CITY	CITY	08/26/11	1185		CITY	CITY	*same as above
SPC/S-115	S	New York	Bradley/Sierra Madre	CITY	CITY	09/30/11	1188		CITY	CITY	*same as above
SPC/S-115	N	New York	Bradley/Sierra Madre	CITY	CITY	09/30/11	1191		CITY	CITY	*same as above
SPC/S-115	N	New York	Bradley/Sierra Madre	CITY	CITY	08/26/11	1195		CITY	CITY	*same as above
SPC/S-115	NE	LAKE	COLORADO	CITY	CITY	08/07/08	1198		CITY	CITY	*same as above
SPC/S-115	SW	Maple	Los Robles	CITY	CITY	07/20/08	1201		CITY	CITY	*same as above
SPC/S-115	NE	Colorado	Michigan	CITY	CITY	10/07/11	1204		CITY	CITY	*same as above
SPC/S-115	NE	Union	Michigan	CITY	CITY	08/26/11	1207		CITY	CITY	*same as above

Col. 1	Col. 2		Col. 3	Col. 4	Col. 5	Col. 6	Col. 7	Col. 8	Col. 9	Col. 10	Col. 11
Certified FCD(s) Installed	FCD Location		Nearest Cross Street	FCD Owner	FCD Maintained By	FCD Installation Date	CB ID No. Served by FCD	CB Type	CB Owner	CB Maintained By	Frequency of FCD Maintenance and other O&M comments
SPC/S-115	NW	Union	Michigan	CITY	CITY	09/26/11	1210		CITY	CITY	*same as above
SPC/S-115	NW	Union	Michigan	CITY	CITY	09/28/11	1213		CITY	CITY	*same as above
SPC/S-115	NE	Mar Vista	Union	CITY	CITY	08/26/11	1216		CITY	CITY	*same as above
SPC/S-115	NW	Mar Vista	Union	CITY	CITY	09/28/11	1220		CITY	CITY	*same as above
SPC/S-115	NE	Union	Wilson	CITY	CITY	09/26/11	1223		CITY	CITY	*same as above
SPC/S-115	NW	Union	Wilson	CITY	CITY	09/29/11	1226		CITY	CITY	*same as above
SPC/S-115	NE	Union	Wilson	CITY	CITY	09/26/11	1229		CITY	CITY	*same as above
SPC/S-115	SW	Union	Wilson	CITY	CITY	09/26/11	1232		CITY	CITY	*same as above
SPC/S-115	NW	Union	Wilson	CITY	CITY	08/26/11	1235		CITY	CITY	*same as above
SPC/S-115	NW	Union	Hill	CITY	CITY	09/29/11	1238		CITY	CITY	*same as above
SPC/S-115	NW	Union	Hill	CITY	CITY	09/29/11	1241		CITY	CITY	*same as above
SPC/S-115	NE	Holliston	Union	CITY	CITY	09/28/11	1245		CITY	CITY	*same as above
SPC/S-115	NW	Holliston	Union	CITY	CITY	09/21/11	1248		CITY	CITY	*same as above
SPC/S-115	NW2	Lake	Maple	CITY	CITY	07/30/08	1251		CITY	CITY	*same as above
SPC/S-115	SW	Altadena	White	CITY	CITY	08/14/08	1254		CITY	CITY	*same as above
SPC/S-115	E	San Rafael Ter	San Rafael Ave	CITY	CITY	10/06/11	1257		CITY	CITY	*same as above
SPC/S-115	NW	Daisy	COLORADO BLVD.	CITY	CITY	07/13/08	1260		CITY	CITY	*same as above

Col. 1	Col. 2		Col. 3	Col. 4	Col. 5	Col. 6	Col. 7	Col. 8	Col. 9	Col. 10	Col. 11
Certified FCD(s) Installed	FCD Location		Nearest Cross Street	FCD Owner	FCD Maintained By	FCD Installation Date	CB ID No. Served by FCD	CB Type	CB Owner	CB Maintained By	Frequency of FCD Maintenance and other O&M comments
SPC/S-115	NW	San Gabriel	COLORADO BLVD.	CITY	CITY	07/14/08	1263		CITY	CITY	*same as above
SPC/S-115	E	Arroyo Pkwy	Fillmore/Glenarm	CITY	CITY	09/27/11	1266		CITY	CITY	*same as above
SPC/S-115	NE	Arroyo Pkwy	Colorado	CITY	CITY	10/07/11	1270		CITY	CITY	*same as above
SPC/S-115	NE	Arroyo Pkwy	Union	CITY	CITY	09/22/11	1273		CITY	CITY	*same as above
SPC/S-115	SE	Arroyo Pkwy	Union	CITY	CITY	09/22/11	1276		CITY	CITY	*same as above
<b><u>Notations:</u></b>											
Form	Insert additional rows, as necessary										
Column 1:	Indicate certified full capture device (FCD) installed										
Column 2:	Name FCD street location										
Column 3:	Name the nearest cross street location of the FCD										
Column 4:	FCD Owned by: Co - County of L.A.; Flood - L.A. County Flood Control District; Ci - City; Ca - Caltrans; Pr - Private; Oth - Others										
Column 5:	FCD Maintained by: Co - County of L.A.; Flood - L.A. County Flood Control District; Ci - City; Ca - Caltrans; Pr - Private; Oth - Others										
Column 6:	Provide the date when FCD was installed										
Column 7:	Indicate County or City assigned catch basin (CB) identification (ID) numbers										
Column 8:	Type of CB based on Standard Plan for Public Works Construction from Greenbook Committee, Public Works Standards, Inc. (i.e., 300-2; 301-2; 302-2; 303-2; etc.)										
Column 9:	CB Owned by: Co - County of L.A.; Flood - L.A. County Flood Control District; Ci - City; Ca - Caltrans; Pr - Private; Oth - Others										
Column 10:	CB maintained by: Co - County of L.A.; Flood - L.A. County Flood Control District; Ci - City; Ca - Caltrans; Pr - Private; Oth - Others										
Column 11:	Indicate frequency of FCD maintenance (e.g. inspection & cleanout: 1x/3 mo., 1x/6 mo., 1x Nov., 1x Jan., 1x Aug., etc.)										



PCD(s) Installed	PCD Location		Nearest Cross Street	Latitude	Longitude	PCD Owner	PCD Maintained By	PCD Installation Date	CB ID No. Served by PCD	CB Type	CB Owner	CB Maintained By	Frequency of PCD Maintenance and other O&M comments
Curb Screen (FCD also installed)	NW	Garfield	Colorado	34.145913	-118.144494	CITY	CITY	7/23/2008	112		CITY	CITY	*Typically a minimum of 2x/year (dry season, wet season)
Curb Screen (FCD also installed)	NE	Arroyo Blvd	Seco	34.156573	-118.166827	CITY	CITY	8/7/2008	476		CITY	CITY	*same as above
Curb Screen (FCD also installed)	NW	Colorado	De Lacey	34.14585	-118.152364	CITY	CITY	8/4/2008	538		CITY	CITY	*same as above
Curb Screen (FCD also installed)		Colorado Blvd	El Nido	34.146272	-118.088713	CITY	CITY	8/12/2008	710		CITY	CITY	*same as above
Curb Screen (FCD also installed)		Colorado Blvd	San Gabriel	34.146239	-118.094755	CITY	CITY	6/29/2008	729		CITY	CITY	*same as above
Curb Screen	NW	Colorado Blvd	Raymond Ave	34.145878	-118.149052	CITY	CITY				CITY	CITY	*same as above
Curb Screen	SW	Colorado Blvd	Daisy Ave	34.146037	-118.093275	CITY	CITY				CITY	CITY	*same as above
Curb Screen		Rosemont Ave	Seco St	34.158408	-118.163955	CITY	CITY				CITY	CITY	*same as above
Curb Screen	S	Colorado Blvd	El Nido	34.146076	-118.088592	CITY	CITY				CITY	CITY	*same as above
Curb Screen		Rosemont Ave	Seco St	34.158922	-118.164156	CITY	CITY				CITY	CITY	*same as above
Curb Screen	SW	Colorado Blvd	Los Robles	34.14573	-118.142139	CITY	CITY				CITY	CITY	*same as above
Curb Screen	SE	Colorado Blvd	Fair Oaks Ave	34.145673	-118.152088	CITY	CITY				CITY	CITY	*same as above
Curb Screen	SW	Colorado Blvd	Lake Ave	34.145793	-118.132613	CITY	CITY				CITY	CITY	*same as above
Curb Screen		Arroyo Blvd		34.153702	-118.166856	CITY	CITY				CITY	CITY	*same as above
Curb Screen	NW	Colorado Blvd	Hudson Ave	34.145987	-118.134011	CITY	CITY				CITY	CITY	*same as above
Curb Screen	NW	Colorado Blvd	Daisy Ave	34.14626	-118.093291	CITY	CITY				CITY	CITY	*same as above
Curb Screen	NE	Colorado Blvd	Fair Oaks Ave	34.145862	-118.152091	CITY	CITY				CITY	CITY	*same as above
Curb Screen		Arroyo Blvd		34.151931	-118.166099	CITY	CITY				CITY	CITY	*same as above
Curb Screen	SE	Colorado Blvd	Eastern Ave	34.146051	-118.091933	CITY	CITY				CITY	CITY	*same as above
Curb Screen		Arroyo Blvd		34.151217	-118.165754	CITY	CITY				CITY	CITY	*same as above
Curb Screen	NE	Colorado Blvd	Lake Ave	34.146014	-118.132148	CITY	CITY				CITY	CITY	*same as above
Curb Screen	NW	Colorado Blvd	Sunnyslope Ave	34.14627	-118.090613	CITY	CITY				CITY	CITY	*same as above
Curb Screen		Arroyo Blvd	Rosemont Ave	34.160732	-118.164326	CITY	CITY				CITY	CITY	*same as above
Curb Screen		Arroyo Blvd		34.152892	-118.166586	CITY	CITY				CITY	CITY	*same as above
Curb Screen		Arroyo Blvd	Seco	34.156357	-118.167628	CITY	CITY				CITY	CITY	*same as above

Curb Screen		Arroyo Blvd		34.150781	-118.164369	CITY	CITY				CITY	CITY	*same as above
Curb Screen		Arroyo Blvd		34.150817	-118.164205	CITY	CITY				CITY	CITY	*same as above
Curb Screen	NE	Garfield Ave	Ramona St	34.148543	-118.14419	CITY	CITY				CITY	CITY	*same as above
Curb Screen	NW	Garfield Ave	Ramona St	34.148528	-118.144386	CITY	CITY				CITY	CITY	*same as above
Curb Screen	NW	Ramona St	Garfield Ave	34.148447	-118.144586	CITY	CITY				CITY	CITY	*same as above
Curb Screen	SW	Ramona St	Garfield Ave	34.148304	-118.144586	CITY	CITY				CITY	CITY	*same as above
Curb Screen	NW	Garfield Ave	Holly St	34.148003	-118.144425	CITY	CITY				CITY	CITY	*same as above
Curb Screen		Garfield Ave		34.148032	-118.144138	CITY	CITY				CITY	CITY	*same as above
Curb Screen	NW	Holly St	Garfield Ave	34.147779	-118.14478	CITY	CITY				CITY	CITY	*same as above
Curb Screen	SW	Holly St	Garfield Ave	34.147578	-118.144774	CITY	CITY				CITY	CITY	*same as above
Curb Screen	SE	Garfield Ave	Holly St	34.147522	-118.14412	CITY	CITY				CITY	CITY	*same as above
Curb Screen	NE	Garfield Ave	Union St	34.147112	-118.144108	CITY	CITY				CITY	CITY	*same as above
Curb Screen	NW	Garfield Ave	Union St	34.147006	-118.144435	CITY	CITY				CITY	CITY	*same as above
Curb Screen	SW	Garfield Ave	Holly St	34.147435	-118.144527	CITY	CITY				CITY	CITY	*same as above
Curb Screen	SW	Garfield Ave	Holly St	34.147393	-118.144418	CITY	CITY				CITY	CITY	*same as above
Curb Screen	N	Colorado Blvd	El Nido	34.146344	-118.088319	CITY	CITY				CITY	CITY	*same as above
Curb Screen	S	Colorado Blvd	El Nido	34.146073	-118.088523	CITY	CITY				CITY	CITY	*same as above