

**CALIFORNIA WATER QUALITY CONTROL BOARD  
SAN DIEGO REGION  
MONITORING AND REPORTING PROGRAM NO. 96-15  
FOR THE  
NORTH MIRAMAR LANDFILL  
CITY OF SAN DIEGO**

**A. MONITORING PROVISIONS**

1. All analyses shall be performed in a laboratory certified to perform such analyses by the California Department of Health Services or a laboratory approved by the Executive Officer. Specific methods of analysis must be identified. If methods other than U. S. EPA approved methods or Standard Methods are used, the exact methodology must be submitted for review and must be approved by the Executive Officer prior to use. The director of the laboratory whose name appears on the certification shall supervise all analytical work in his/her laboratory and shall sign all reports of such work submitted to the Regional Board.
2. If the discharger monitors any pollutants more frequently than required by this Order, using the most recent version of Standard U. S. EPA Methods, or as specified in this Order, the results of this monitoring shall be included in the calculation and reporting of the data submitted in the discharger's monitoring report. The increased frequency of monitoring shall also be reported.
3. The discharger shall report all instances of noncompliance not reported under Reporting Requirement D.5 of this Order at the time monitoring reports are submitted. The reports shall contain the information listed in Reporting Requirement D.5.
4. Sample collection, storage, and analysis shall be performed according to the most recent version of Standard U. S. EPA Methods, and in accordance with an approved sampling and analysis plan.
5. All monitoring instruments and equipment which are used by the discharger to fulfill the prescribed monitoring program shall be properly calibrated and maintained as necessary to ensure their continued accuracy.
6. The discharger shall retain records of all monitoring information, including all calibration and maintenance records and copies of all reports required by this Order. Records shall be maintained for a minimum of five years from the date of the sample, measurement, report or application. This period may be extended during the course of any unresolved litigation regarding this discharge or when requested by the Executive Officer.

7. Records of monitoring information shall include:
  - a. The date, identity of sample, Monitoring Point from which it was taken, and time of sampling or measurement;
  - b. The individual(s) who performed the sampling or measurements;
  - c. Date and time that analyses were started and completed, and the name of the personnel performing each analysis;
  - d. The analytical techniques or method used, including method of preserving the sample and the identity and volumes of reagents used;
  - e. Calculation of results; and
  - f. Results of analyses, and the MDL for each parameter.
  - g. Laboratory quality assurance results (e.g. percent recovery, response factor)
8. The monitoring reports shall be signed by an authorized person as required by Reporting Requirement D.9.

## **B. SITE MAINTENANCE**

1. The discharger shall perform quarterly inspections of the landfill site and report the results **semi-annually**. The report shall contain information on the sites condition and a discussion of any significant findings with regard to:
  - a) General site condition;
  - b) Surface cover and slope;
  - c) Drainage facilities;
  - d) Ground water and vadose zone monitoring networks;
  - e) Methane gas control system;
  - f) Observation of seepage from the site; and
  - g) Maintenance activities at the site.

## **C. GROUND WATER SAMPLING/ANALYSIS FOR DETECTION MONITORING**

1. The discharger shall establish and maintain groundwater wells at the landfill site to be used as part of the water quality monitoring program.
2. Prior to pumping monitoring wells for sampling, the static water level shall be measured in each well.

3. The discharger shall submit a compliance evaluation summary of the groundwater data obtained. The summary shall contain a table which includes the following information:
  - a. Monitoring parameters;
  - b. Detection limit of monitoring equipment;
  - c. Measured concentrations found in the current sampling event
4. Water samples from the compliance points shall be collected, analyzed, and reported as shown in C.6. and D. below.
5. **Ground Water Flow Rate/Direction**

For each monitored ground water body, the discharger shall measure the water level in each well and determine ground water flow rate and direction at least semi-annually, including the times of expected highest and lowest elevations of the water level for the respective ground water body. Ground water elevations for all background and downgradient wells for a given ground water body shall be measured within a period of time short enough to avoid temporal variations in ground water flow which could preclude accurate determination of ground water flow rate and direction.

**6. GROUND WATER MONITORING PARAMETERS**

The following shall constitute the ground water monitoring program for the North Mirmar Landfill:

- a. The ground water monitoring network shall consist of monitoring wells MW-2, MW-5s, MW-3, MW-6, AW-1, and MW-11 as shown on Figure 1 to Monitoring and Reporting Program No. 96-15.
- b. The discharger shall sample ground water monitoring wells MW-2, MW-5s, MW-3, MW-6, AW-1, and MW-11 for the following constituents semiannually:

Constituent	Units	Sampling Frequency	Reporting Frequency
Chloride	mg/l	Semi-annually	Semi-annually
Sulfate	mg/l	Semi-annually	Semi-annually
Nitrate Nitrogen	mg/l	Semi-annually	Semi-annually
pH		Semi-annually	Semi-annually
Total Dissolved Solids	mg/l	Semi-annually	Semi-annually
Volatile Organics	µg/l	Semi-annually	Semi-annually

Note: mg/l = milligrams/liter and µg/l = micrograms/liter

**D. REPORTS TO BE FILED WITH THE BOARD**

All reports shall be submitted no later than one month following the end of their respective Reporting Period. The reports shall be comprised of at least the following in addition to the specific contents listed for each respective report type:

**1. Transmittal Letter**

A letter summarizing the essential points shall be submitted with each report. The transmittal letter shall include:

- a. A discussion of any requirement violations found since the last such report was submitted and shall describe actions taken or planned for correcting the violations. If the discharger has previously submitted a detailed time schedule for correcting said requirement violations, a reference to the correspondence transmitting such schedule will be satisfactory. If no violations have occurred since the last submittal, this shall be stated in the transmittal letter; and

- b. A statement certifying that, under penalty of perjury, that to the best of the signer's knowledge the report is true, complete, and correct. This statement shall be signed by an individual that meets the requirements contained in Reporting Requirement D.9.

2. **Semi-Annual Report**

The semi-annual report shall contain, but not be limited to the following:

- a. Site maintenance outlined in section B of this Monitoring and Reporting Program.
- b. Groundwater analysis and flow rate outlined in section D of this Monitoring and Reporting Program.
- c. A map (or copy of an aerial photograph) showing the locations of observation stations, Monitoring Points, and Background Monitoring Points.

3. **Annual Summary Report**

The discharger shall submit an annual report to the Regional Board covering the previous monitoring year. The annual Reporting Period ends April 30.

- a. For each monitoring point, submit in graphical format the laboratory analytical data for all samples taken within at least the previous four calendar years. Each graph shall plot the concentration of the constituent over time for a given monitoring point, at a scale appropriate to show trends or variations in water quality.
- b. A comprehensive discussion of the compliance record, result of any corrective actions taken or planned which may be needed to bring the discharger into full compliance with the waste discharge requirements.
- c. A written summary of the monitoring results and monitoring system(s), indicating any changes made or observed since the previous annual report.
- d. A map showing the direction of ground water flow at the landfill site.

**E. REPORTING**

Monitoring reports shall be submitted to the Executive Officer in accordance with the following schedule:

<u>Report Frequency</u>	<u>Report Period</u>	<u>Report Due</u>
Semiannually	May-October	30 Days after
	November-April	the reporting
Annually	May-April	period.

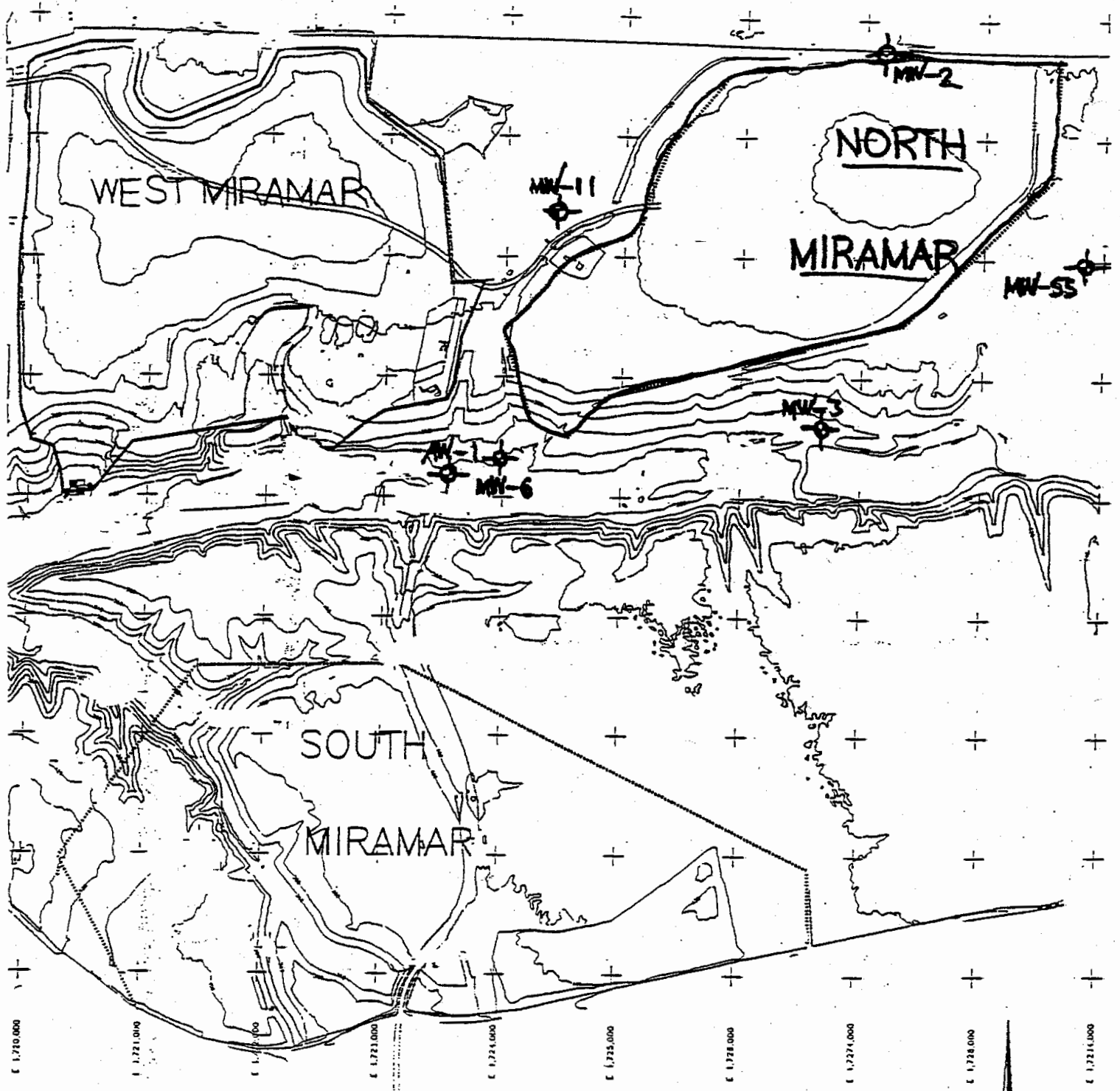
Monitoring reports shall be submitted to:

Land Discharge Unit  
California Regional Water Quality Control Board  
San Diego Region  
9771 Clairemont Mesa Blvd., Suite A  
San Diego, CA 92124-1331

Ordered by



John H. Robertus  
Executive Officer



Groundwater Monitoring Well Locations  
for the North Miramar Landfill

Figure 1

