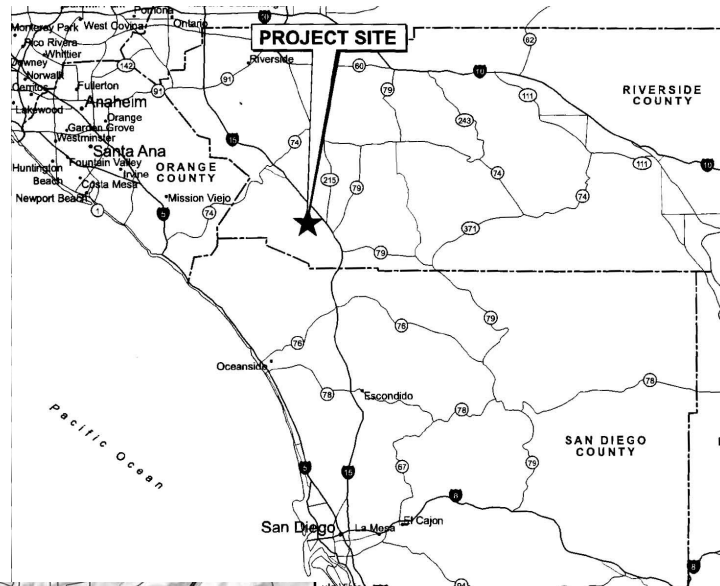
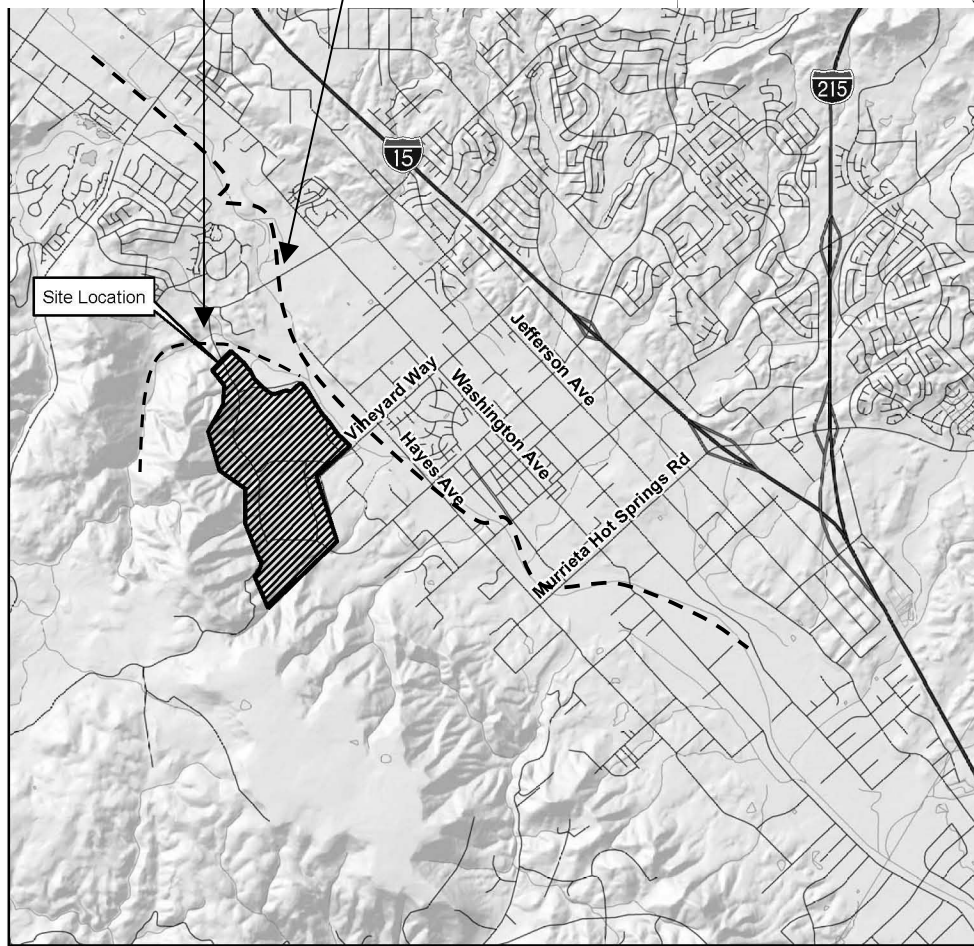


The project area is in the City of Murrieta southwest of the confluence of Cole Creek and Murrieta Creek. The site is located west of Hayes Avenue at the terminus of Vineyard Parkway.



Cole Creek Murrieta Creek



SOURCE: US Census 2000 Street Data

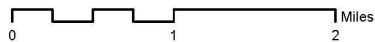


FIGURE 2 - VICINITY MAP

TENTATIVE TRACT MAP 28903

PRINCIPE AND ASSOCIATES