

San Diego Canyonlands

Canyon Enhancement Planning

*Presentation to:
Regional Water Quality
Control Board*

February 10, 2016



Canyon Enhancement Planning Process

Step 1- Build Canyon “Friends” Groups

Eugene Canyon

Normal Heights



Eugene Canyon

Normal Heights



Examples of Improvements



Switzer Canyon – BEFORE 2002



Switzer Canyon – AFTER 2012



November 17, 2007

Swan Canyon, City Heights
Before (on left) After (below)



May 15, 2013





**Shepherd
Canyon
Wetlands**

**Eucalyptus
Removal**

Left Before

Below After

**San Diego River
Watershed
Blanket Permits
For Removal of
Non-Native Veg.
and Planting
Native Veg.**

ACoE RGP-41

**CA Dept. F&W
Streambed 1602**



**December, 2014
helicoptered palms
out of
Shepherd Canyon**



Shepherd Canyon

**Tierrasanta
Canyons**

**Friends Group
active
since 2003**



Getting a tough job done!

by **Roberta Froome**

The first Sunday in September found over 20 volunteers from Tier-
rasanta Lutheran Church stretching their muscles and endurance on a
steep hillside overlooking East Shepherd Canyon. September 7th is the
Lutheran national day of service. Working in the dust and heat, these
hardy souls partnered with San Diego Canyonlands to remove acacia
and Russian thistle. They finished up a patch of acacia left by previ-



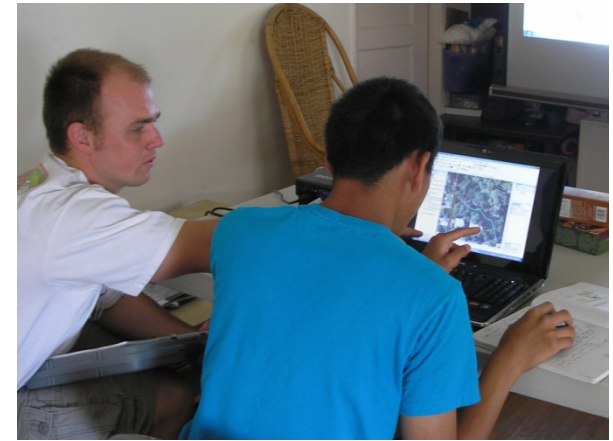
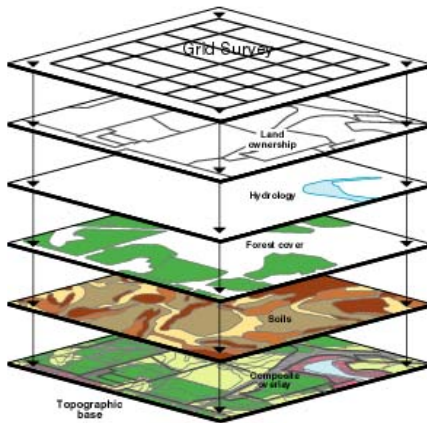
Auburn Creek , City Heights
Before (on left) Jan. 2014
After (below) June, 2015
Blue nursery cones are
Protecting native plants.





CEP Process

Step 2 - Map Existing Conditions GIS Mapping Internship Program



Step 3, Assemble Stakeholders, Create Action Plan

Manzanita Canyon Socio-Infrastructure Map & Action Plan



Example – Trail transformation from bottom of Manzanita Canyon to up to Azalea Park

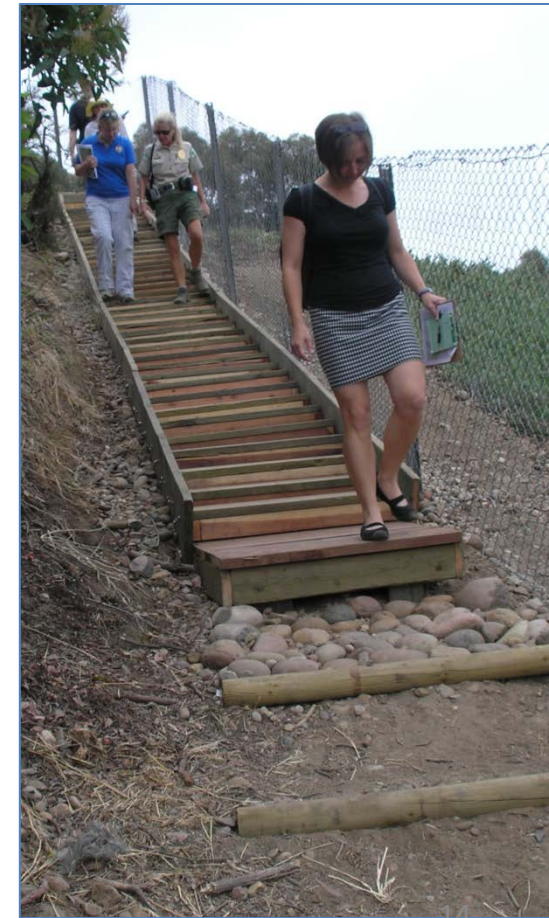
Before



Construction



After





Manzanita Canyon
Western End
Floodplain (Dec. 2014)

Drain Outlet under I-805
Ramp to I-15





47th Street Canyon 8/10/09



47th Street Canyon 4/23/11

Invasive Arundo donax gone

47th St. Canyon, floodplain –Native Evening Primrose in bloom
where *Arundo donax* once dominated (facing north), (July 24, 2015).



**CA Coastal Conservancy
Awards \$300,000 Grant
for
Canyon Enhancement
Planning in
12) Urban Canyons**

**Prop 1 Funds will
be sought to implement
the restoration plans**

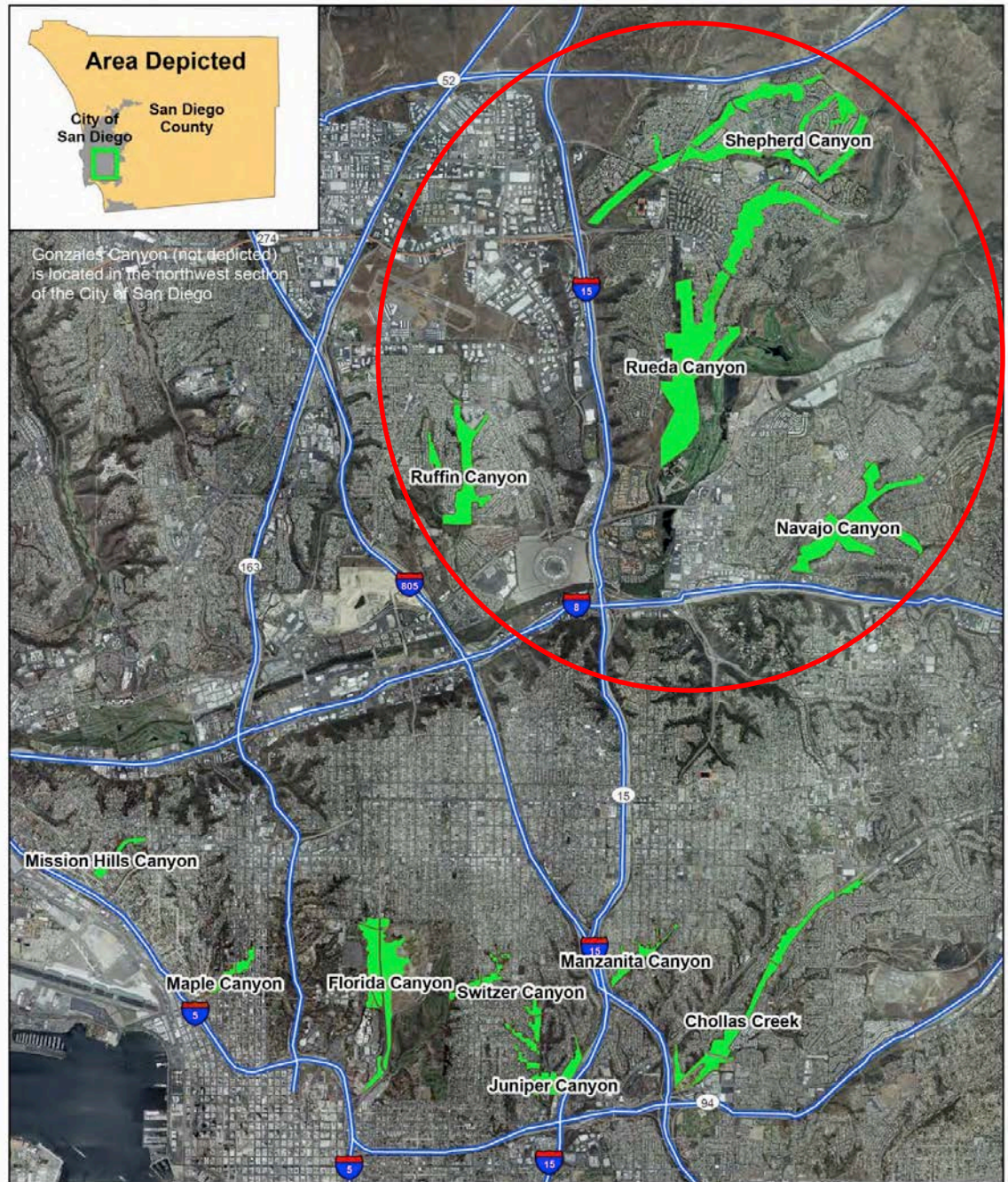
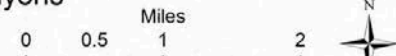


Fig. 1 Regional Map Showing Project Canyons

Map Date: 09.03.2015
Imagery: SANDAG, June 2012



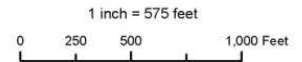


Rueda Canyon Habitat Restoration & Enhancement Project - Project Areas



Full Extent

Map Date: 11/13/2015
 Imagery: SANDAG, June 2012
 Data Sources: SANGIS, SANDAG, City of San Diego



**Working Toward Programmatic CEQA
& Master Permit for Canyon Enhancements**

**SD Canyonlands - \$27,000 toward the Environmental Documentation
City - Mayor Faulconer - \$52,000 toward CEQA Processing**

**Maple Canyon
Renegade Trail**

Causing Erosion



Maple Canyon Hydro-Modification Causing Severe Erosion of the Creek Channel



Key CEP Goals

Ecological Goals

- Restore watershed natural functions
- Protect threatened biodiversity
- Provide/protect habitat/wildlife corridors

Social Goals

- Promote relationship between quality of life, human health & natural open space
- Integrate Nature into the Urban Fabric



SAN DIEGO
CANYONLANDS



www.sdcanionlands.org