

# APPENDIX E

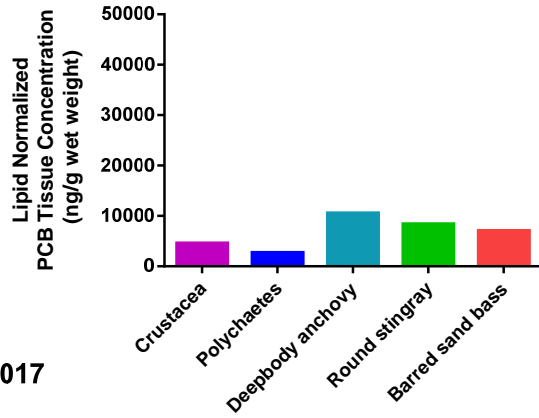
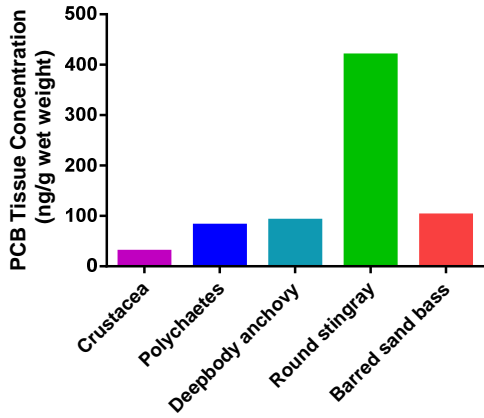
## GRAPHICAL AND STATISTICAL ANALYSES

This page left intentionally blank

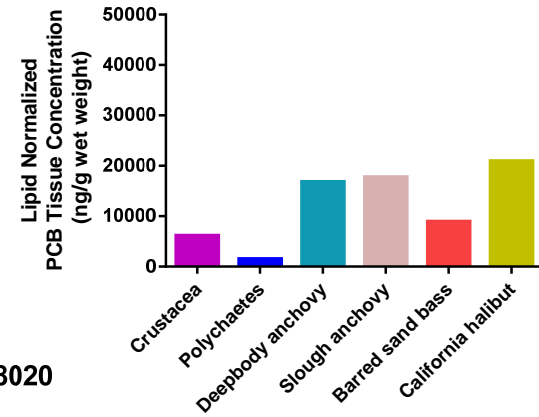
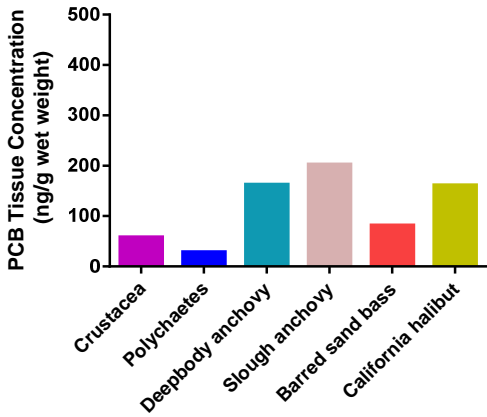
**Tissue and Sediment Chemistry Graphs by  
Constituent and Site  
(Total PCBs, Total DDTs, and Mercury)**

**This page left intentionally blank**

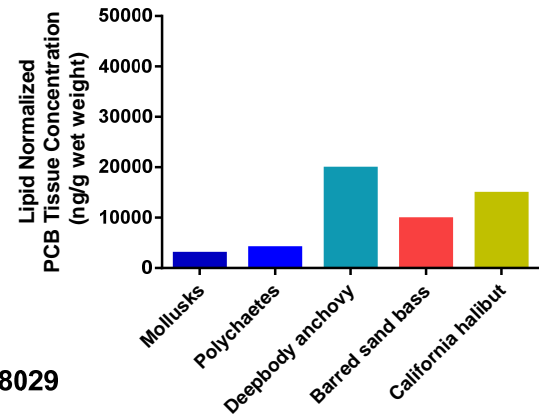
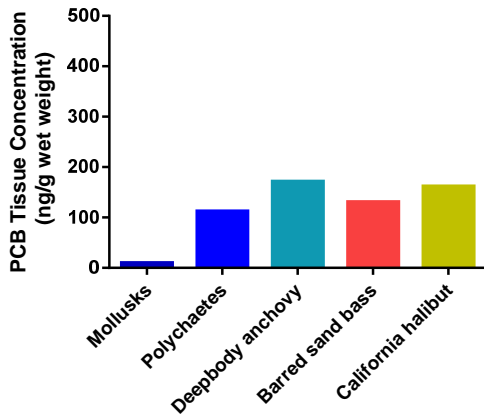
# PCBs



B13-8017

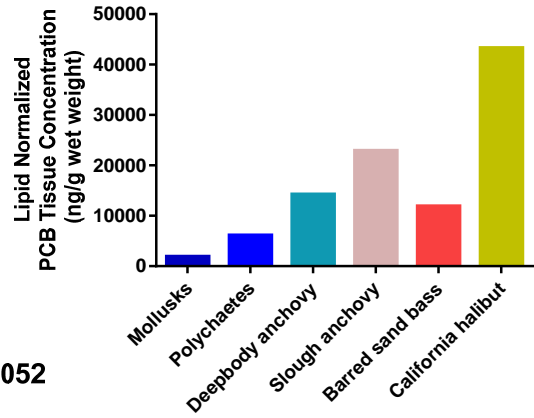
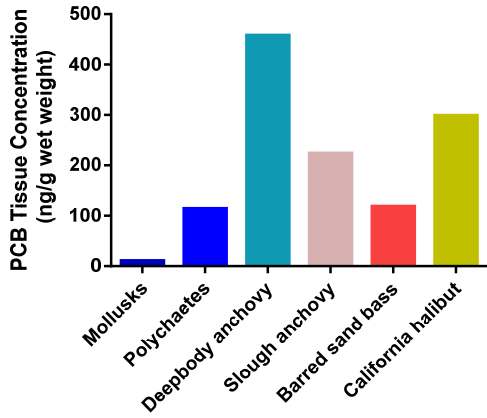


B13-8020

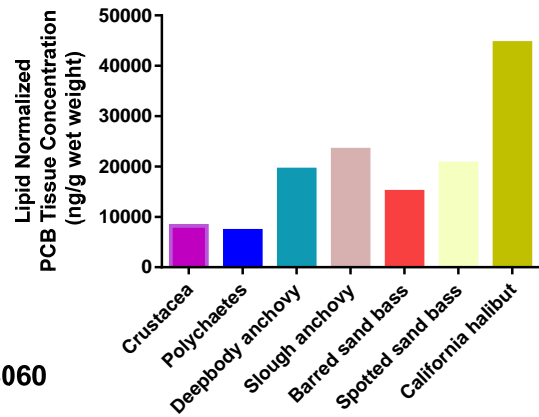
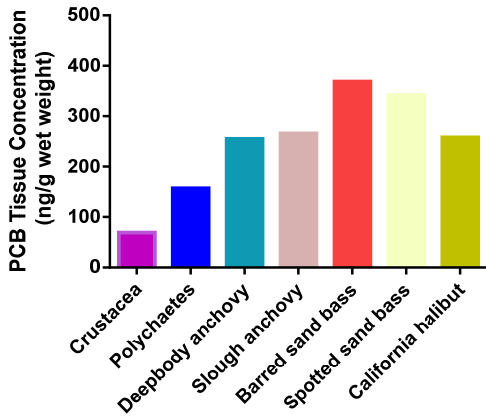


B13-8029

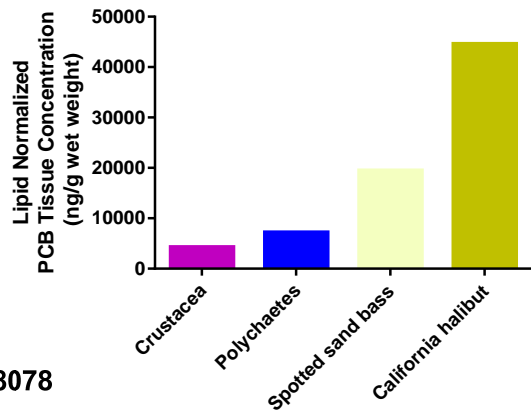
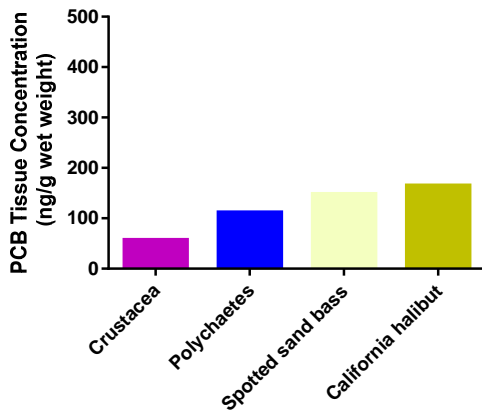
# PCBs



B13-8052

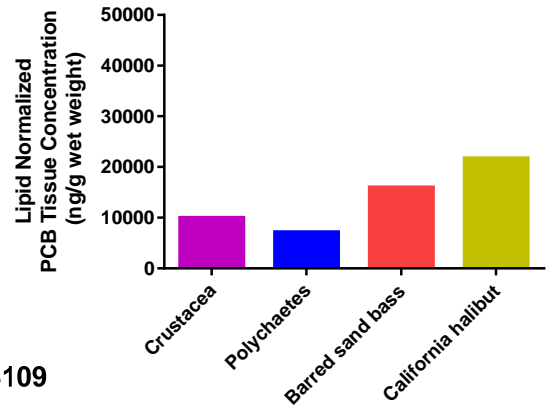
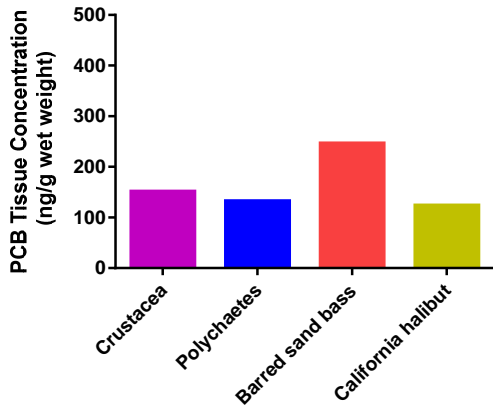


B13-8060

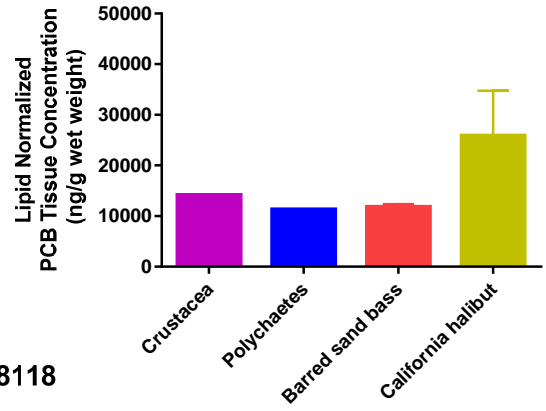
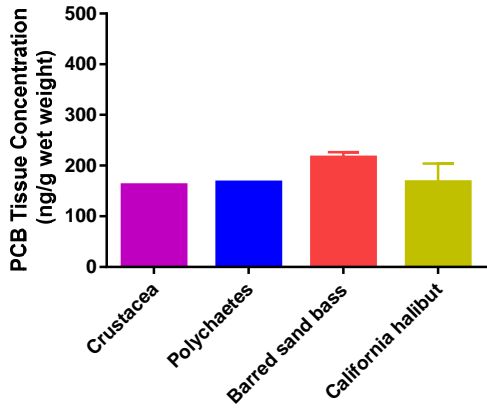


B13-8078

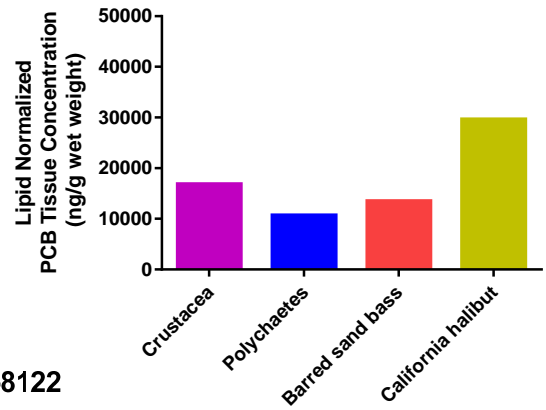
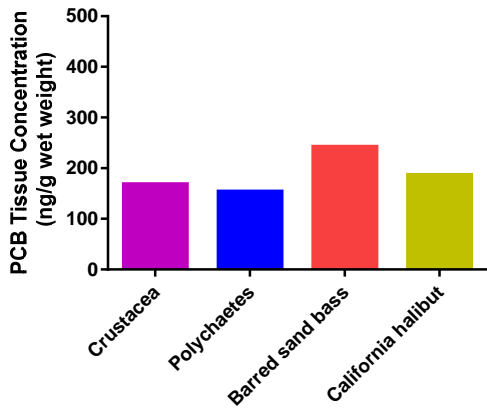
# PCBs



B13-8109

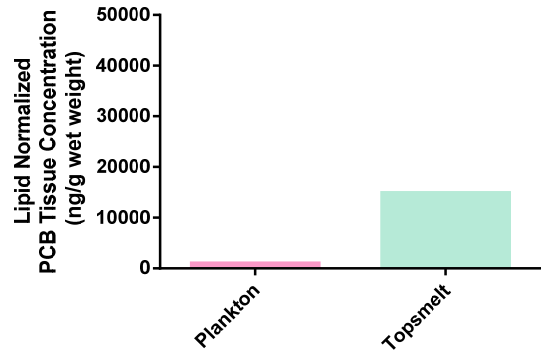
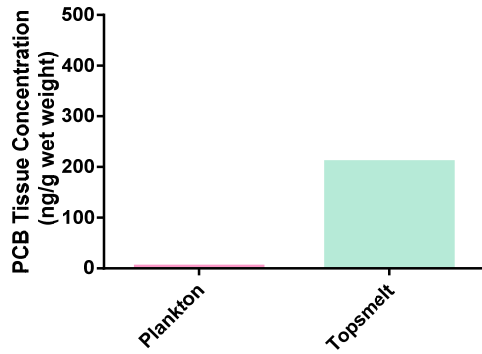


B13-8118

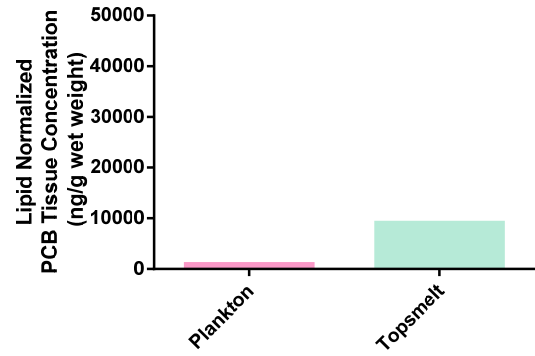
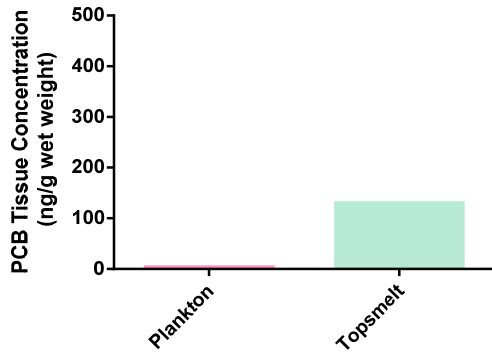


B13-8122

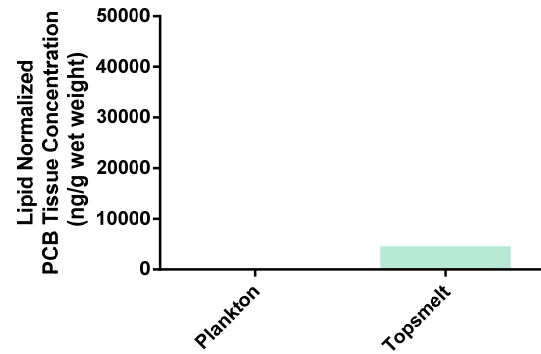
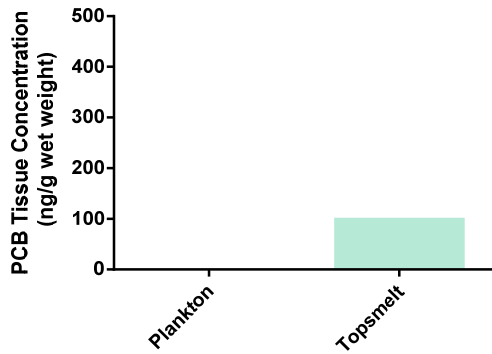
# PCBs



## SDN-1



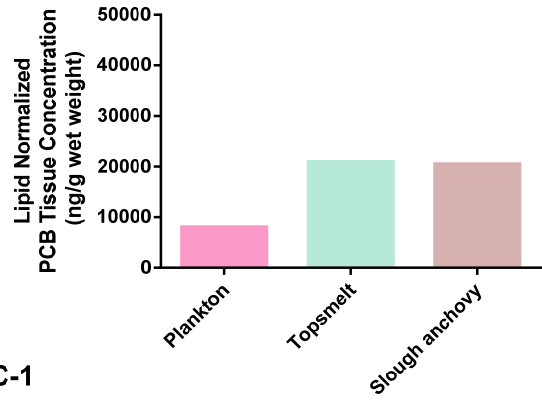
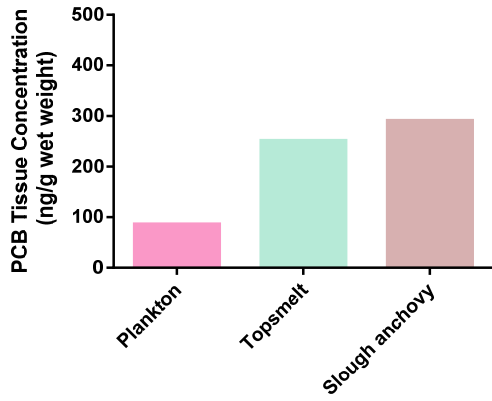
## SDN-2



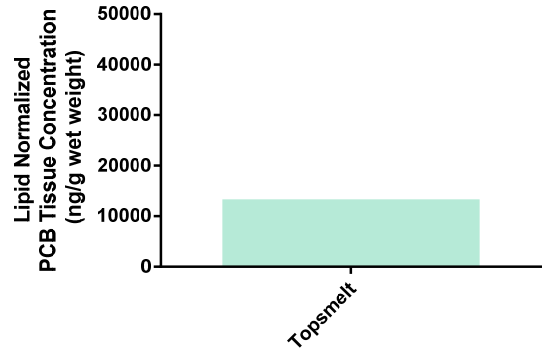
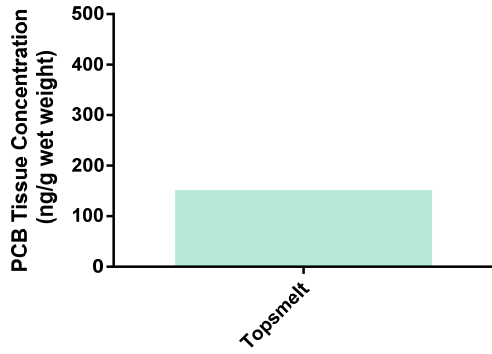
## SDN-3



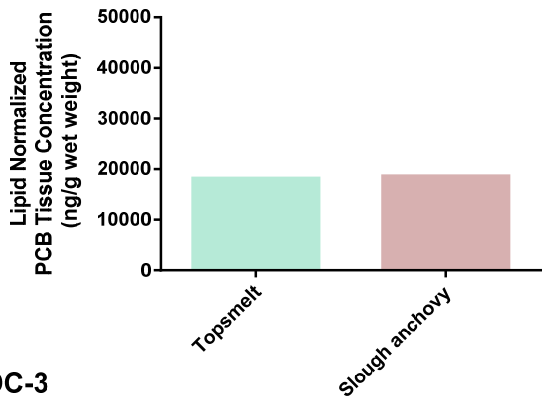
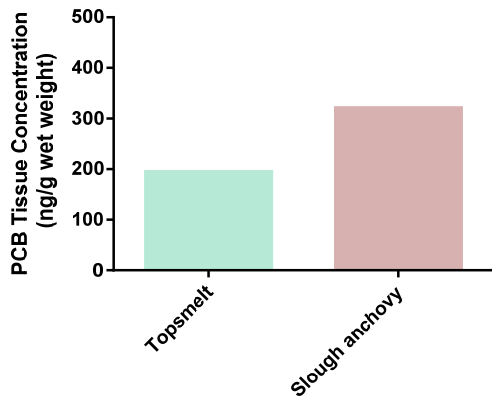
# PCBs



## SDC-1

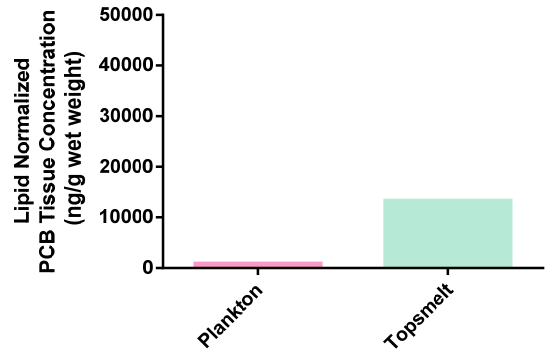
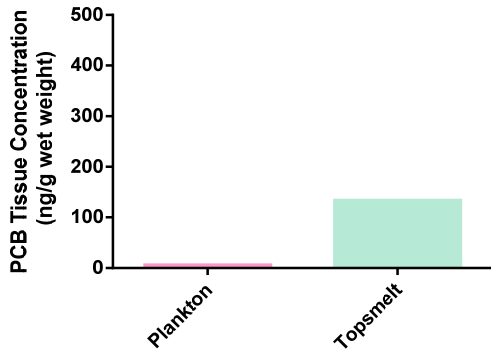


## SDC-2

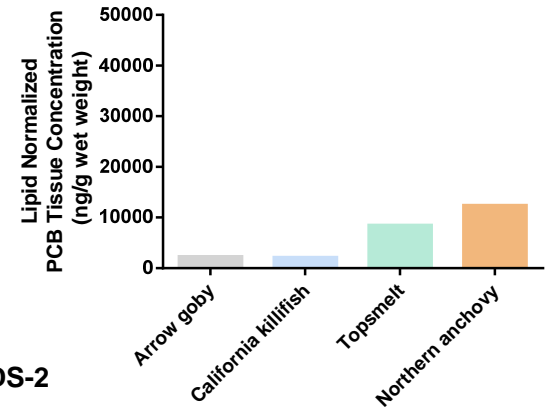
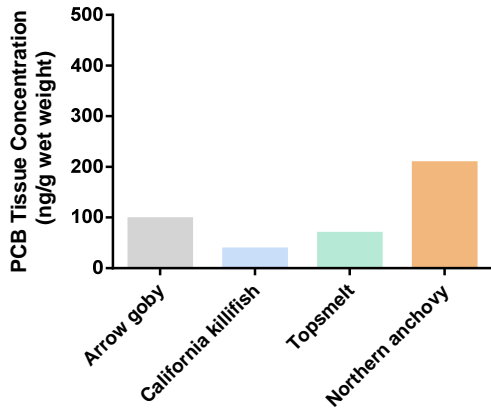


## SDC-3

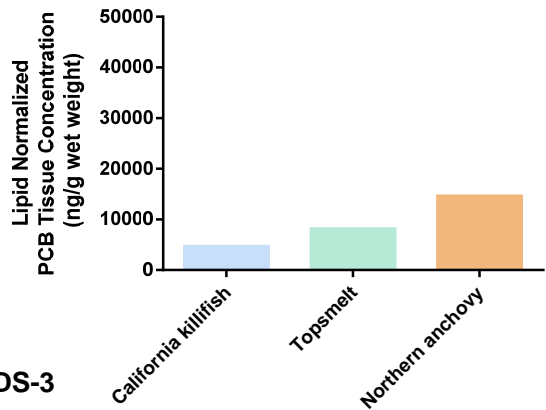
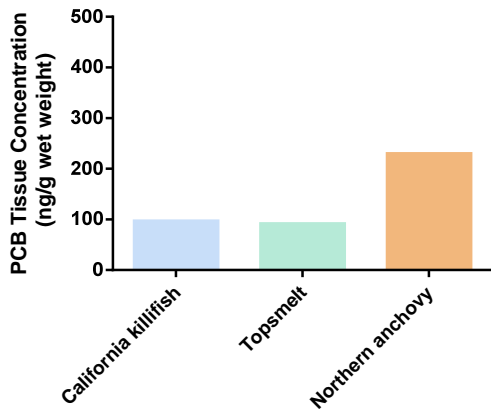
# PCBs



## SDS-1

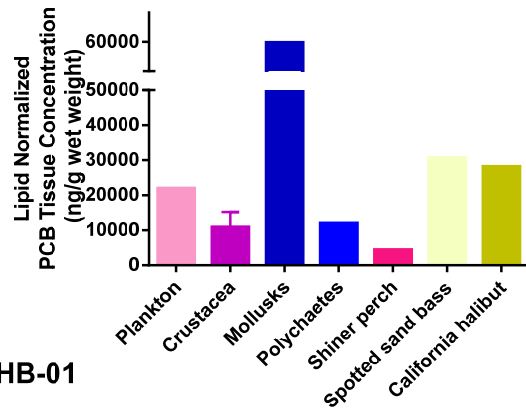
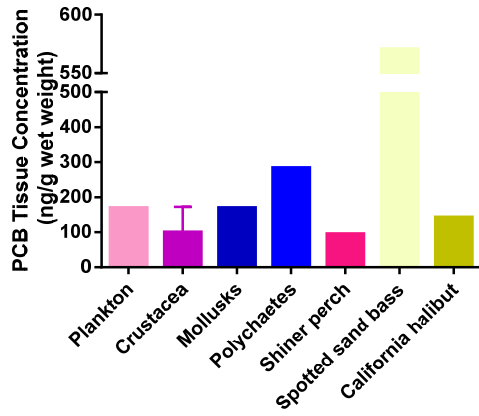


## SDS-2

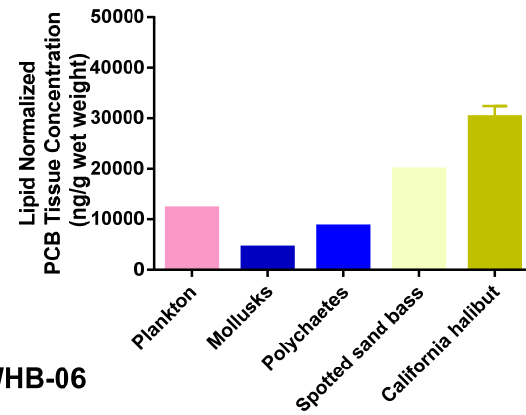
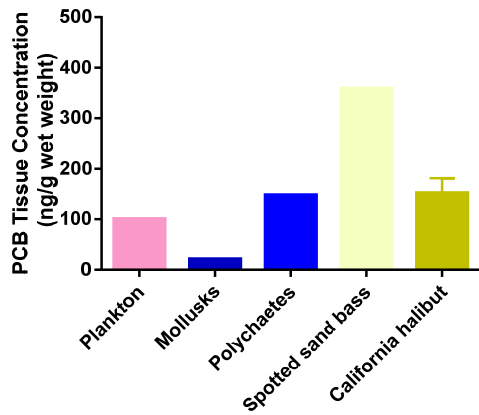


## SDS-3

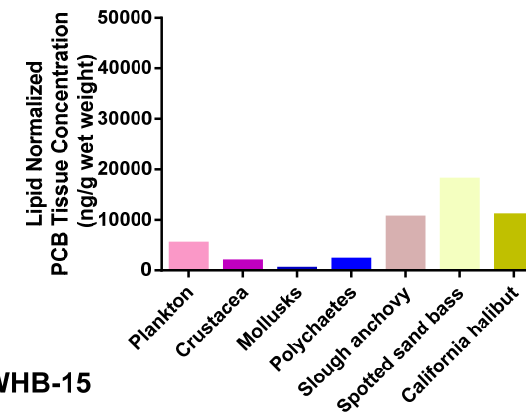
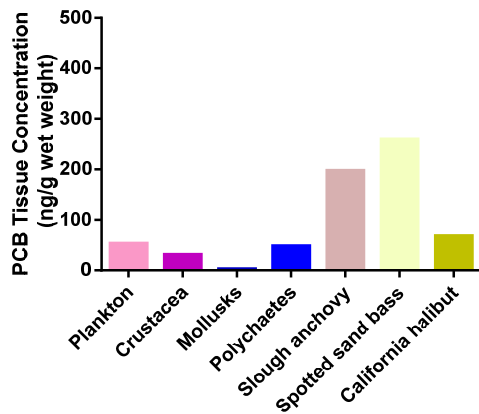
# PCBs



SWHB-01

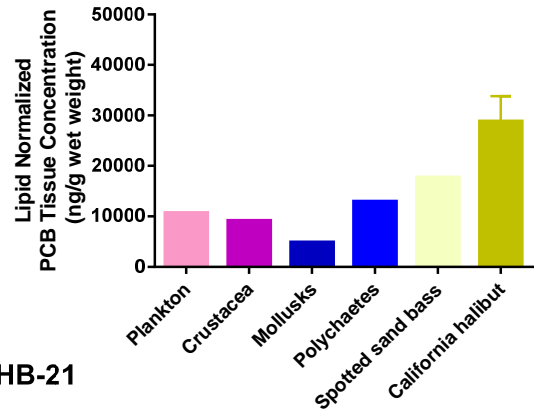
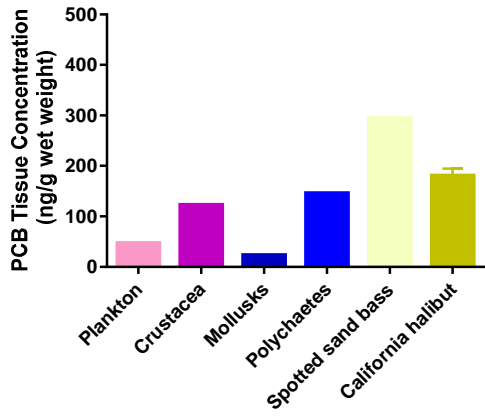


SWHB-06

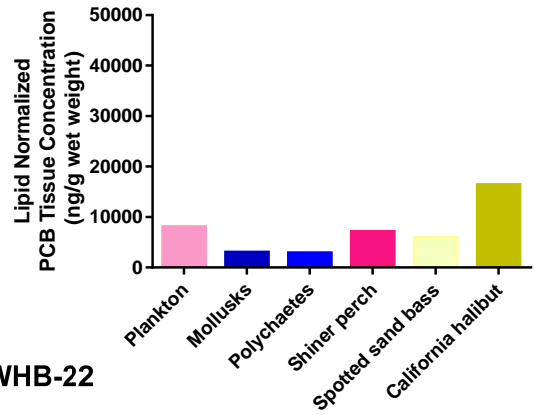
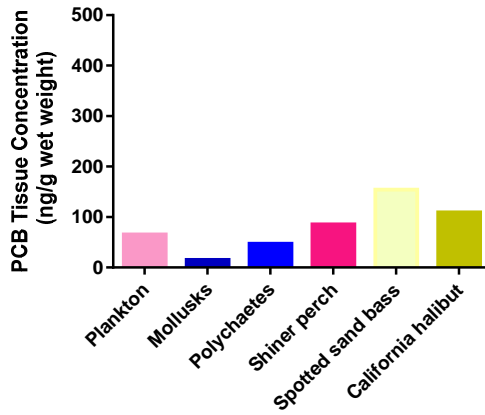


SWHB-15

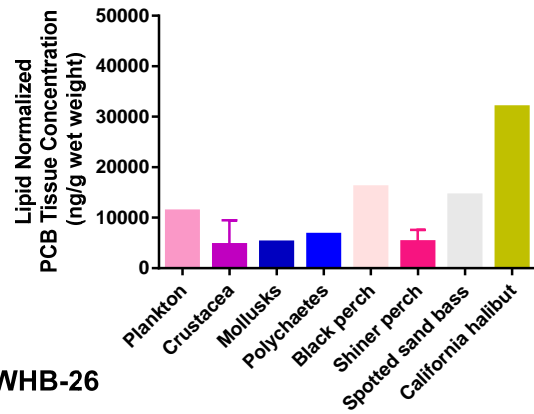
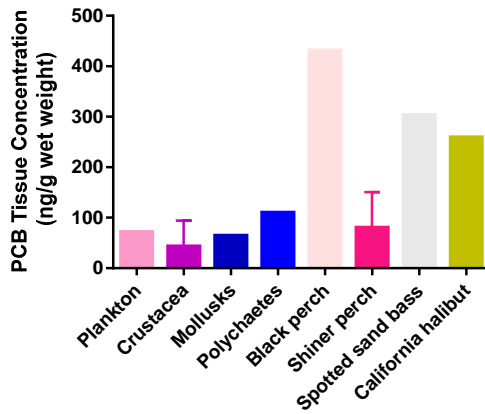
# PCBs



SWHB-21

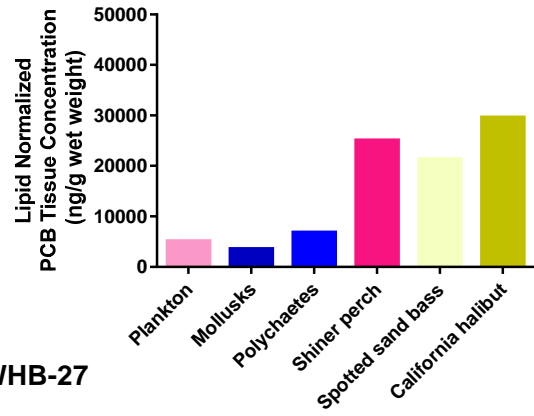
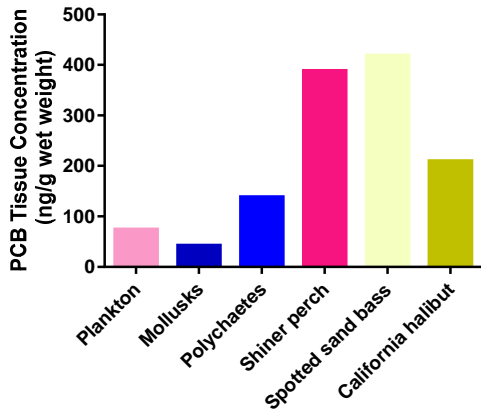


SWHB-22

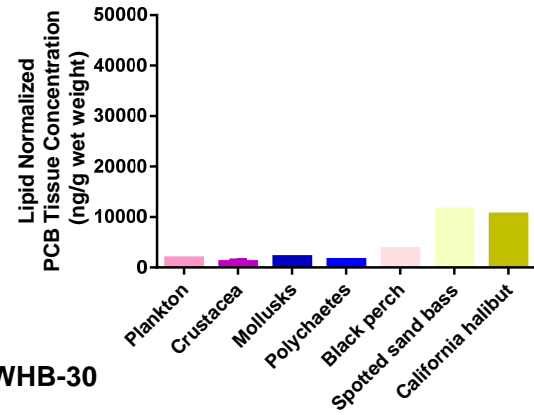
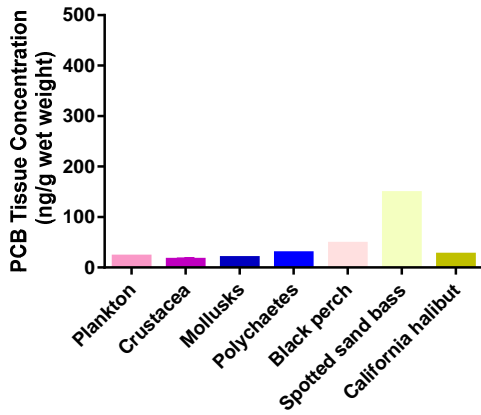


SWHB-26

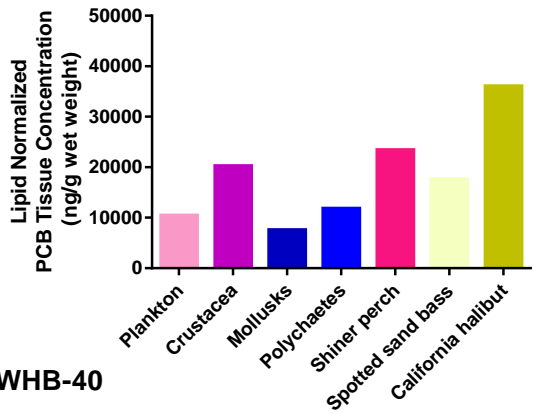
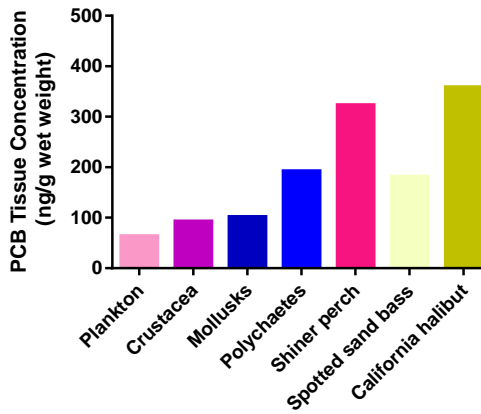
# PCBs



SWHB-27

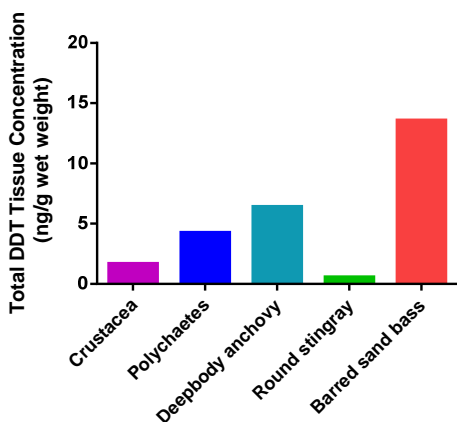


SWHB-30

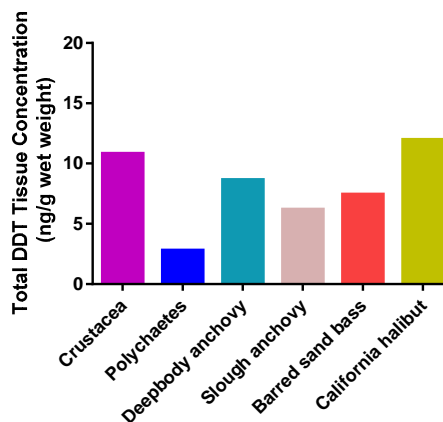


SWHB-40

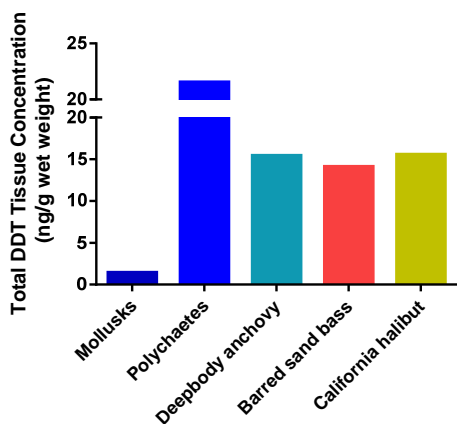
# Total DDTs



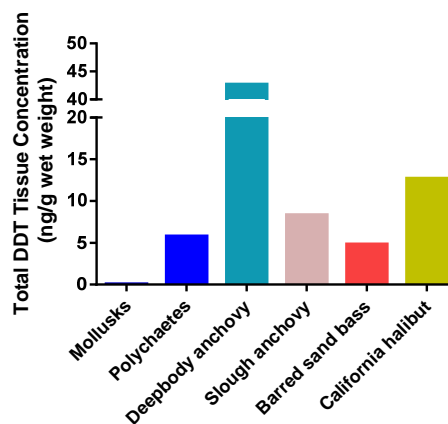
B13-8017



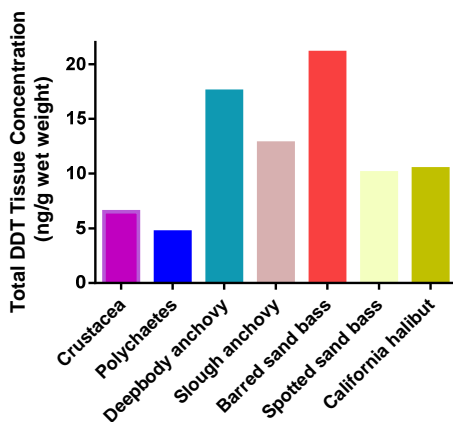
B13-8020



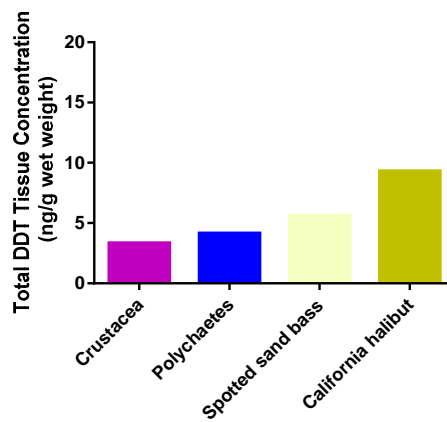
B13-8029



B13-8052

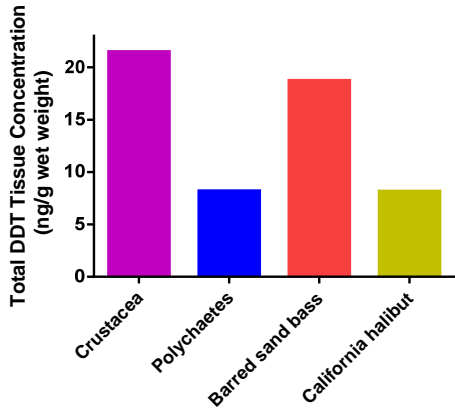


B13-8060

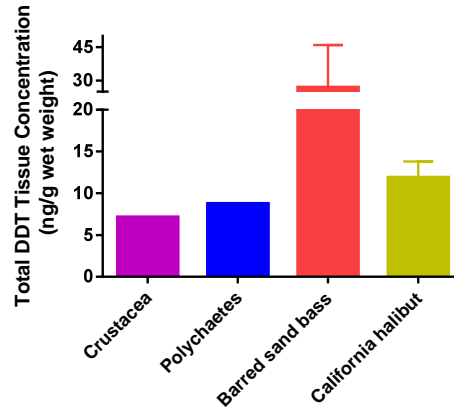


B13-8078

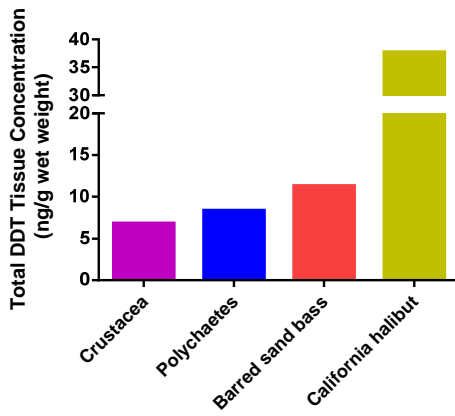
# Total DDTs



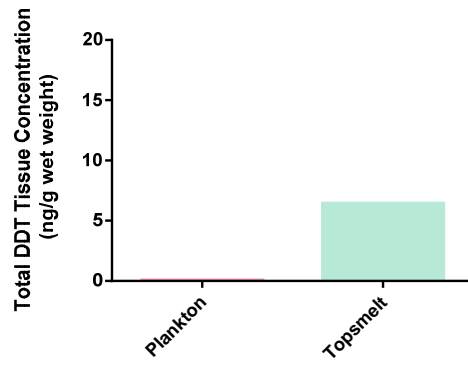
B13-8109



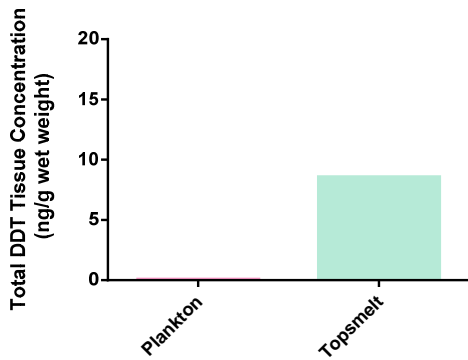
B13-8118



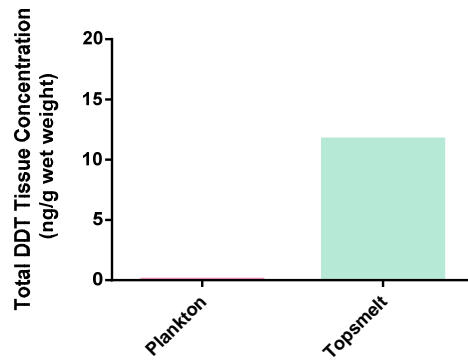
B13-8122



SDN-1

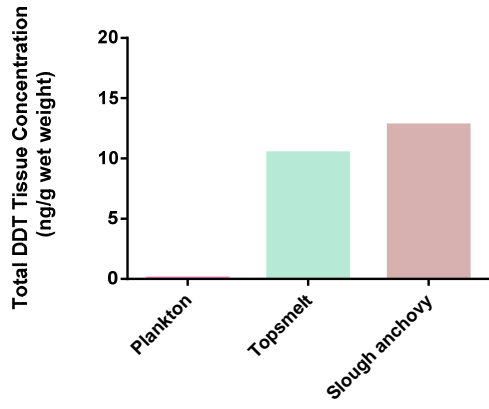


SDN-2

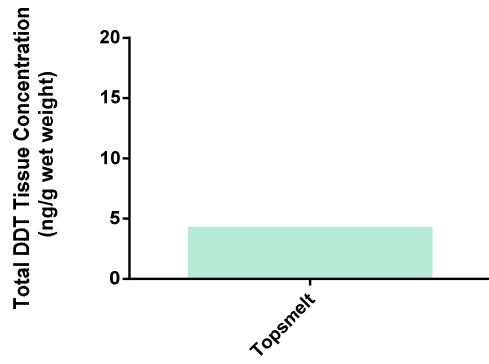


SDN-3

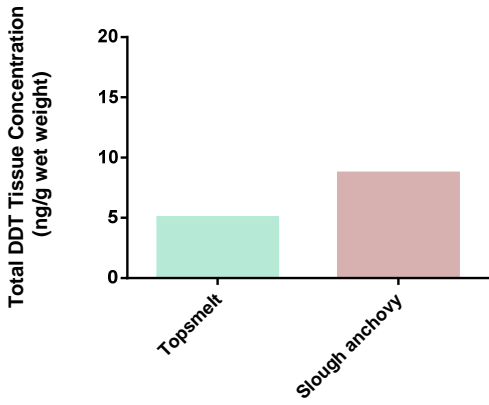
# Total DDTs



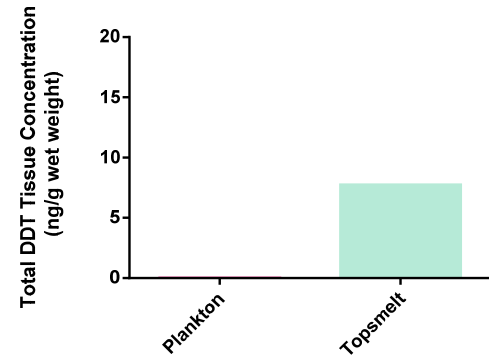
SDC-1



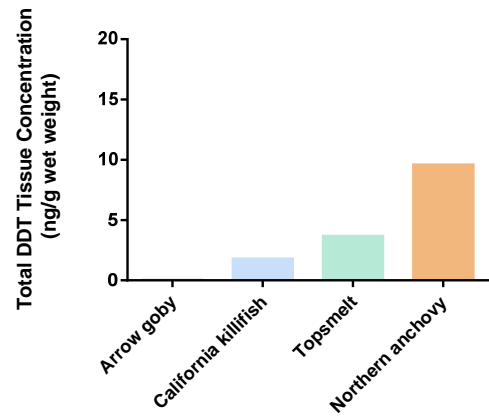
SDC-2



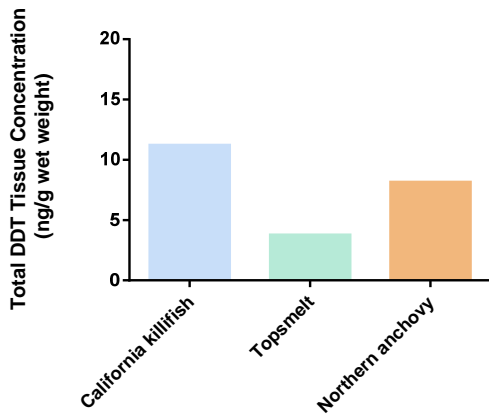
SDC-3



SDS-1



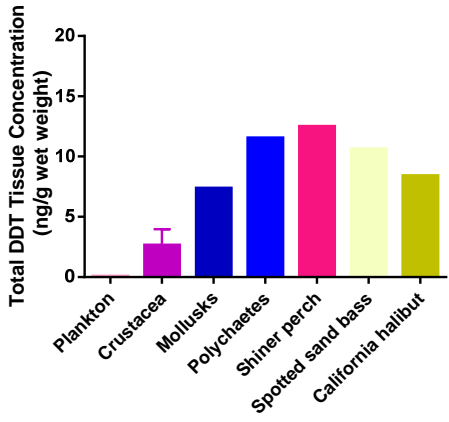
SDS-2



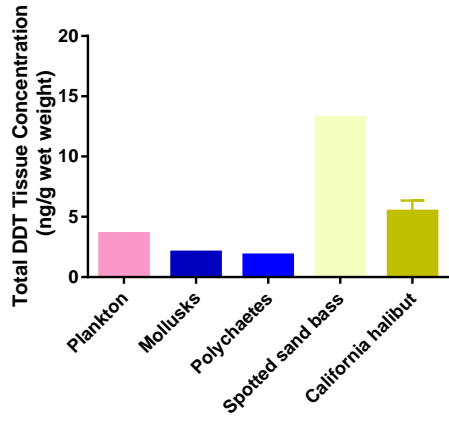
SDS-3



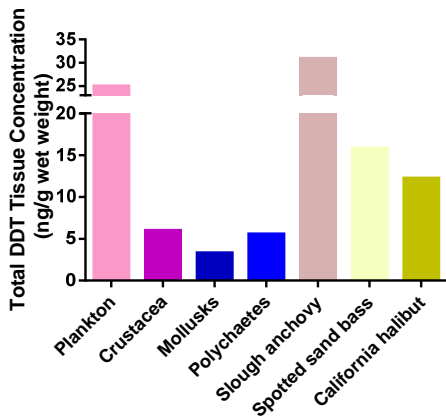
# Total DDT



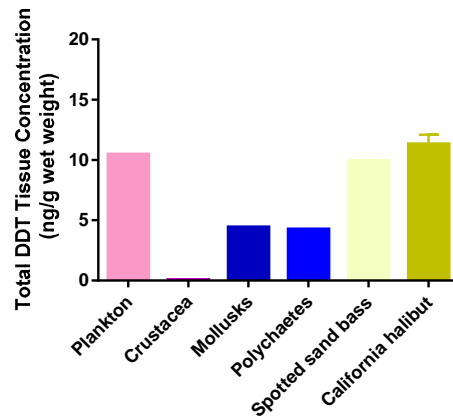
SWHB-01



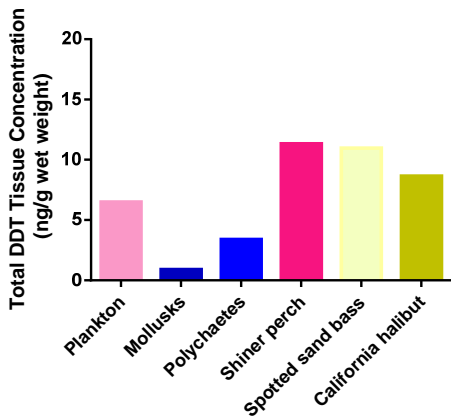
SWHB-06



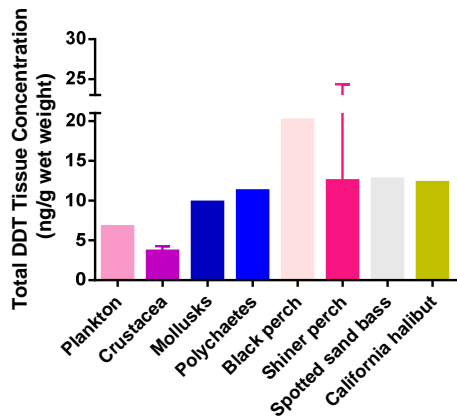
SWHB-15



SWHB-21

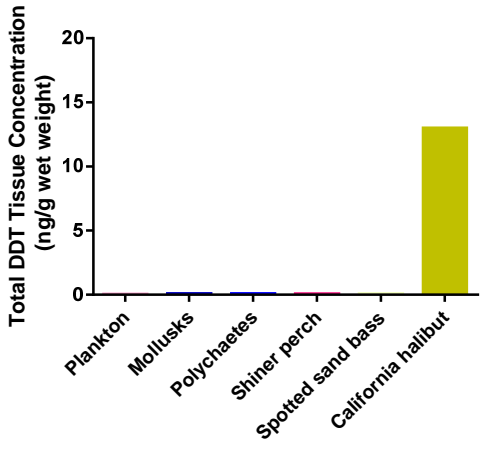


SWHB-22

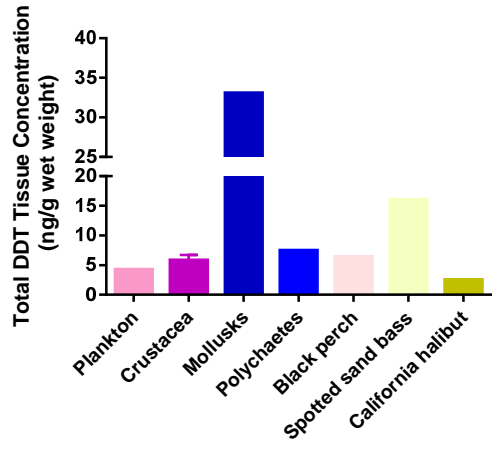


SWHB-26

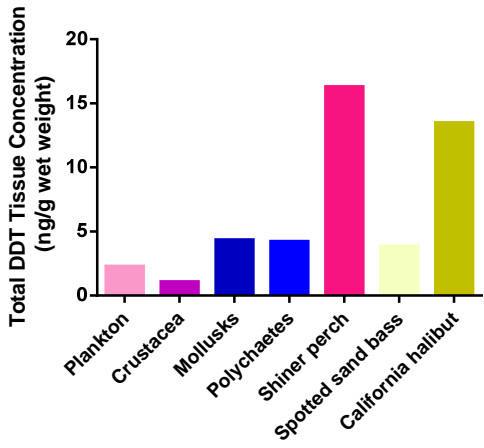
# Total DDT



SWHB-27

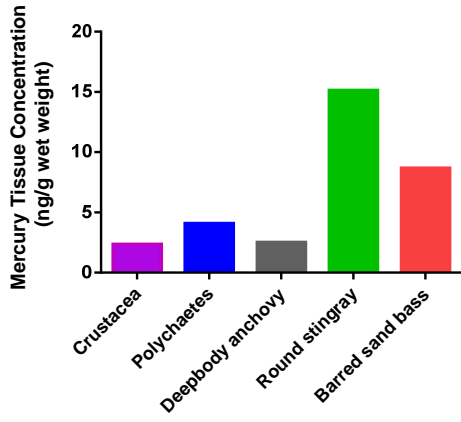


SWHB-30

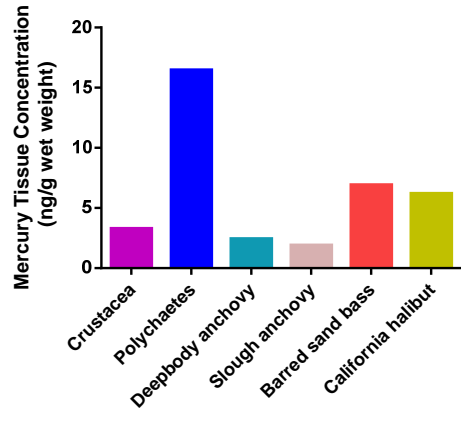


SWHB-40

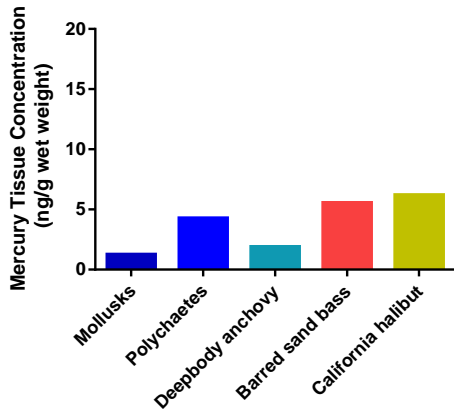
# Mercury



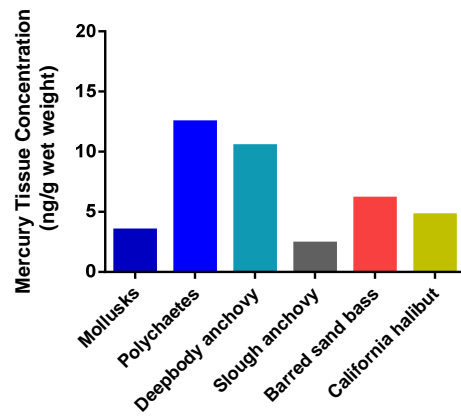
B13-8017



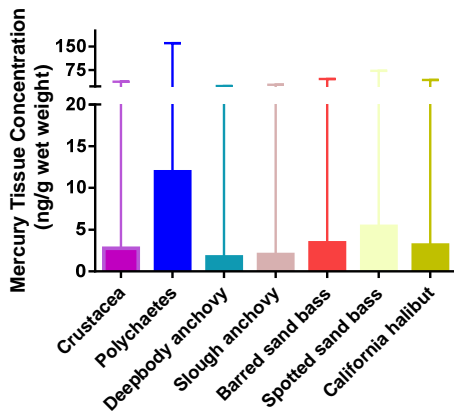
B13-8020



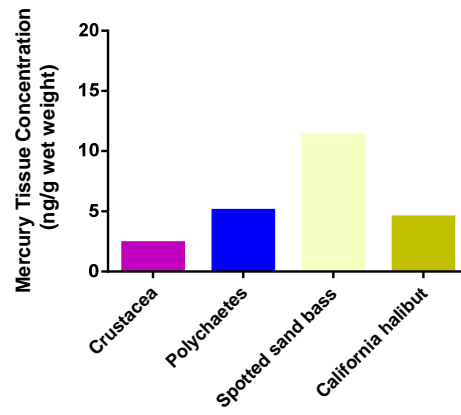
B13-8029



B13-8052

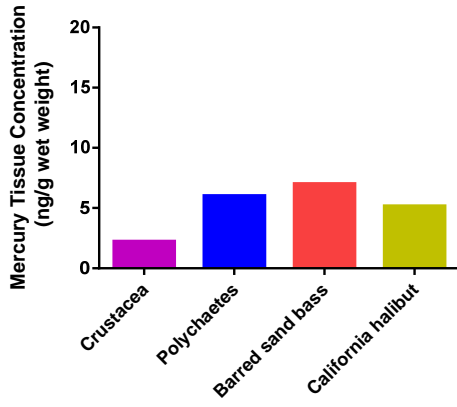


B13-8060

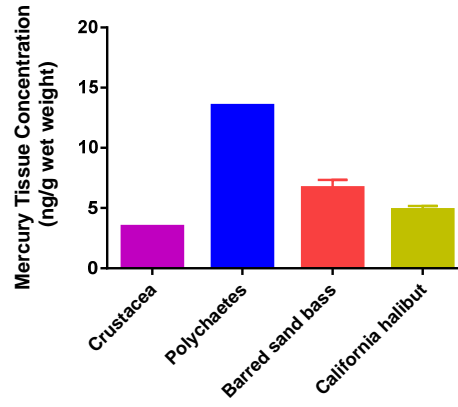


B13-8078

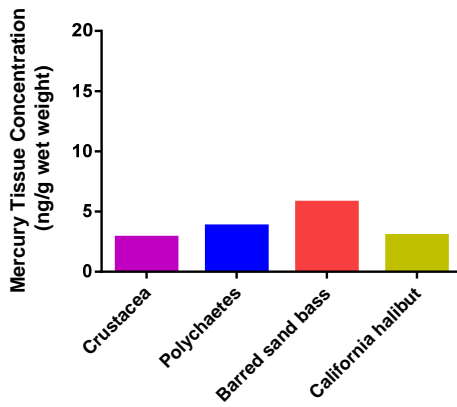
# Mercury



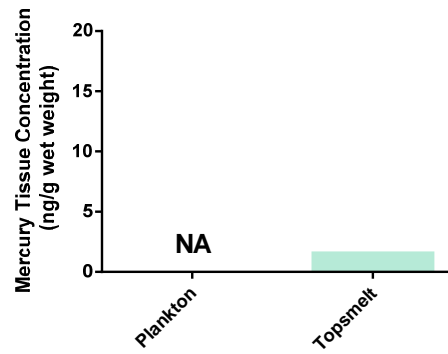
B13-8109



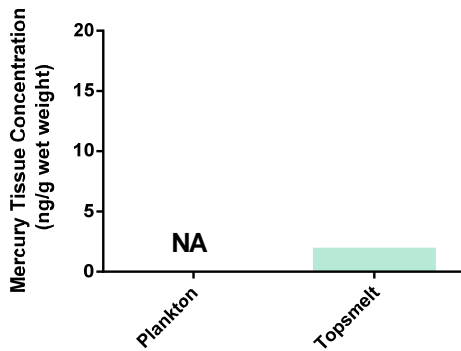
B13-8118



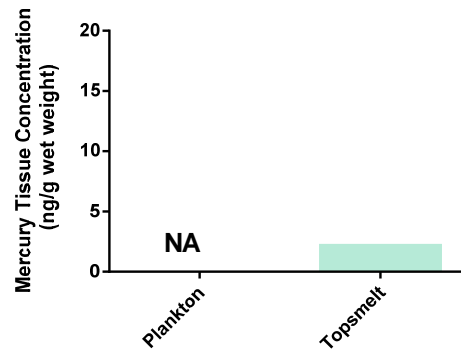
B13-8122



SDN-1

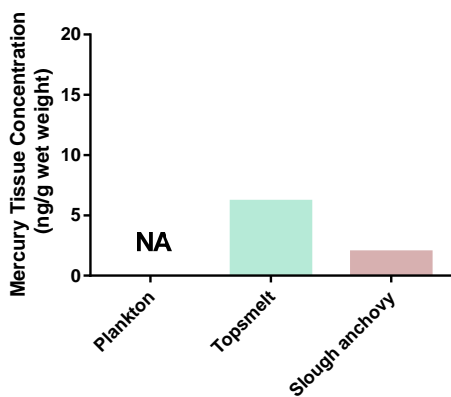


SDN-2

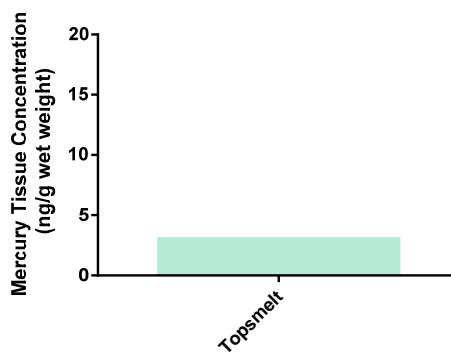


SDN-3

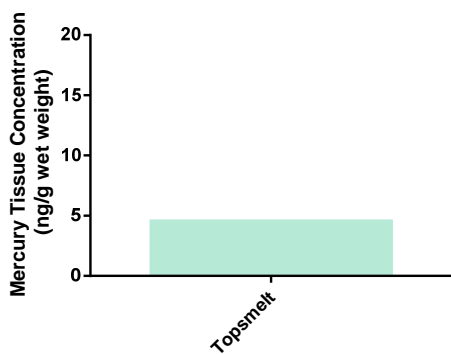
# Mercury



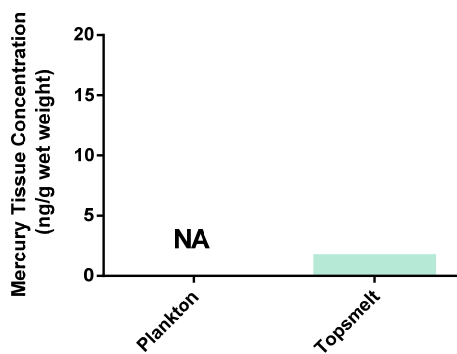
SDC-1



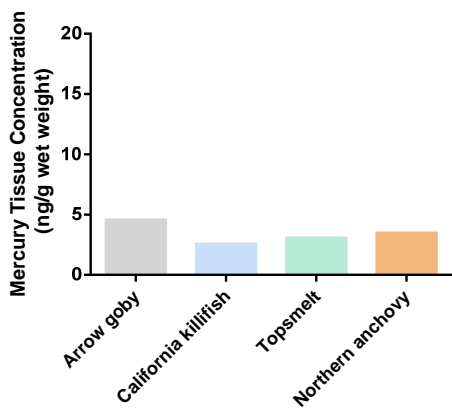
SDC-2



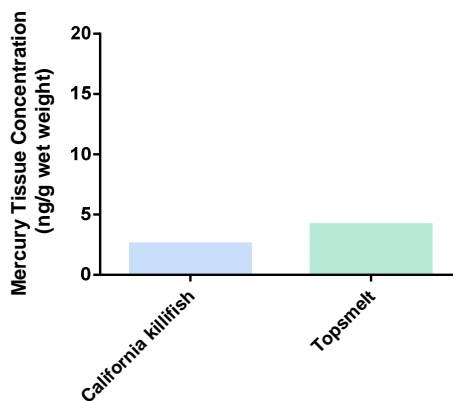
SDC-3



SDS-1

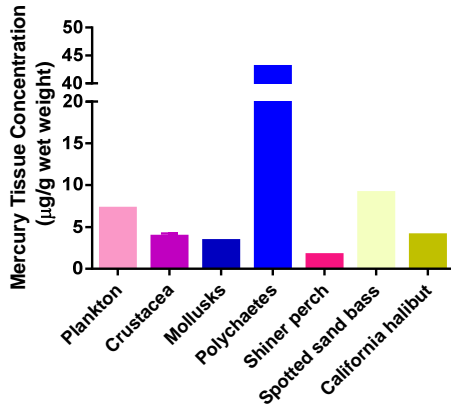


SDS-2

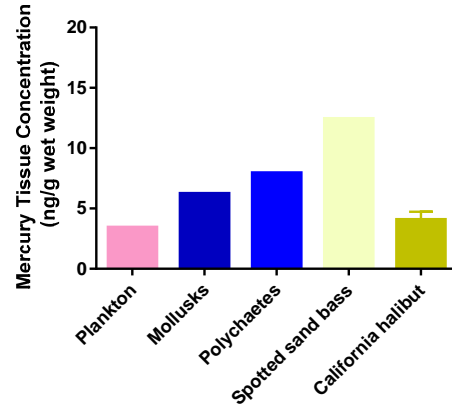


SDS-3

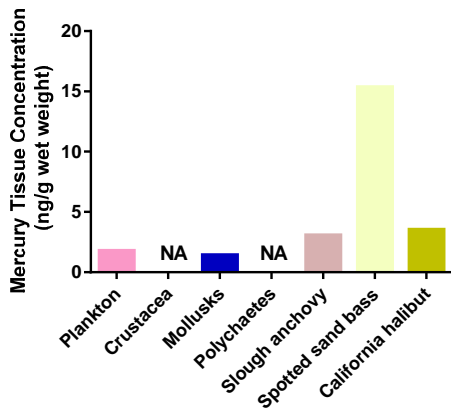
# Mercury



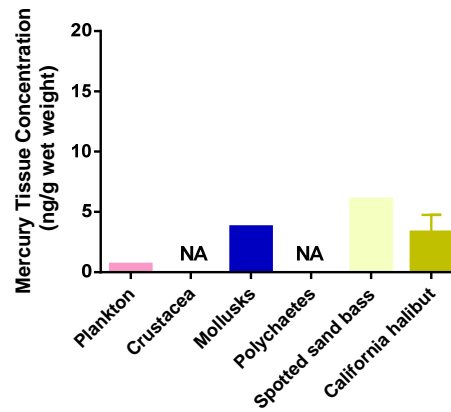
SWHB-01



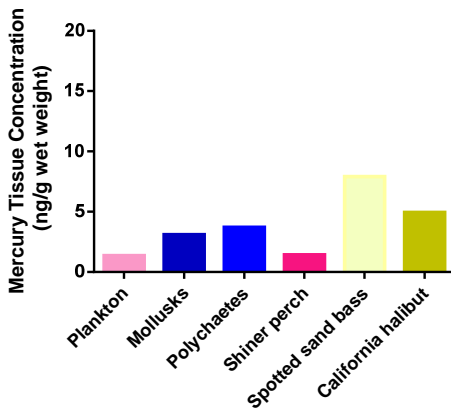
SWHB-06



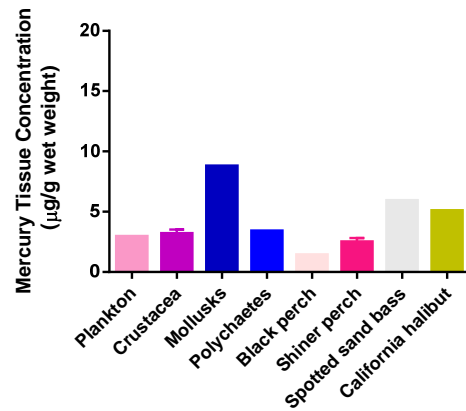
SWHB-15



SWHB-21

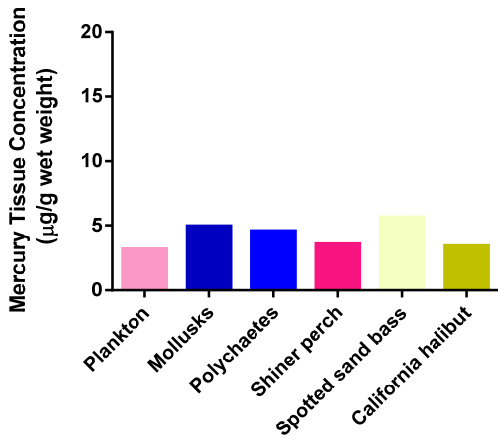


SWHB-22

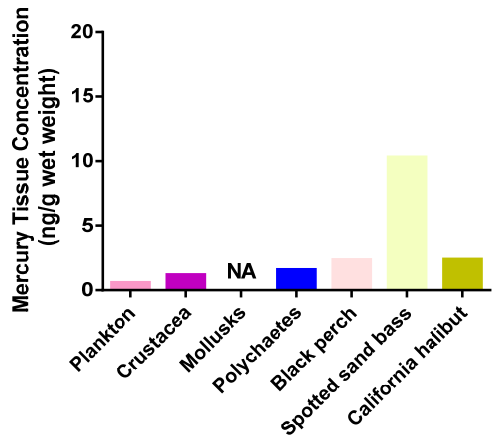


SWHB-26

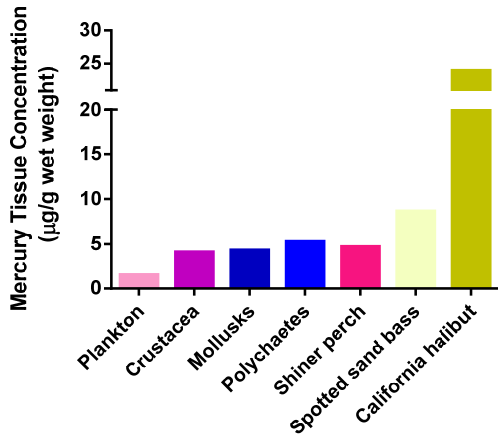
# Mercury



SWHB-27



SWHB-30



SWHB-40

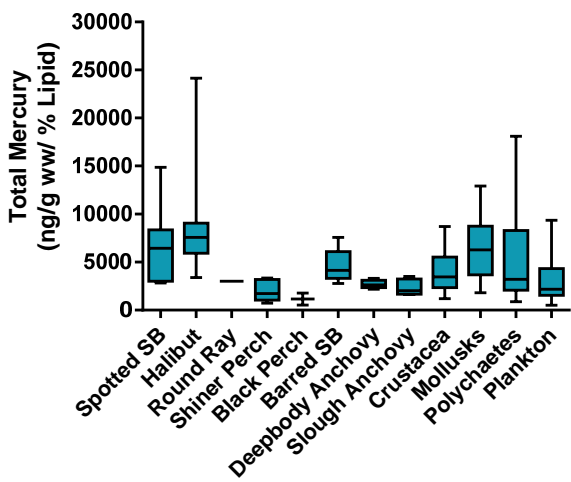
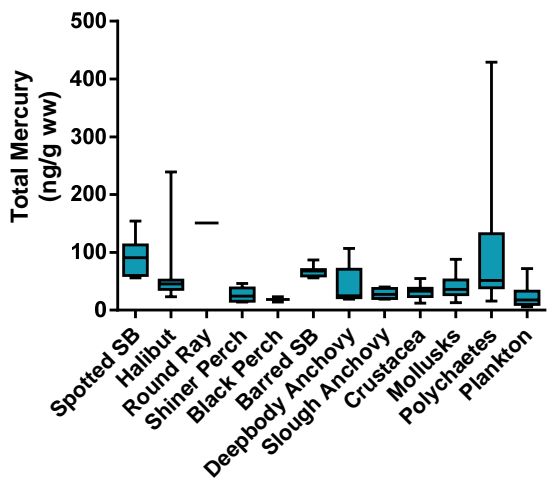
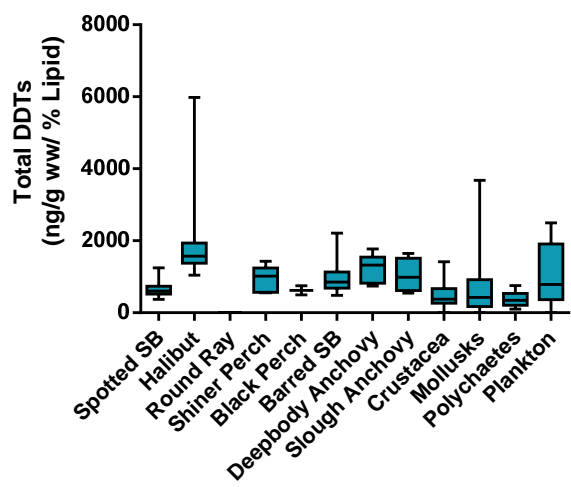
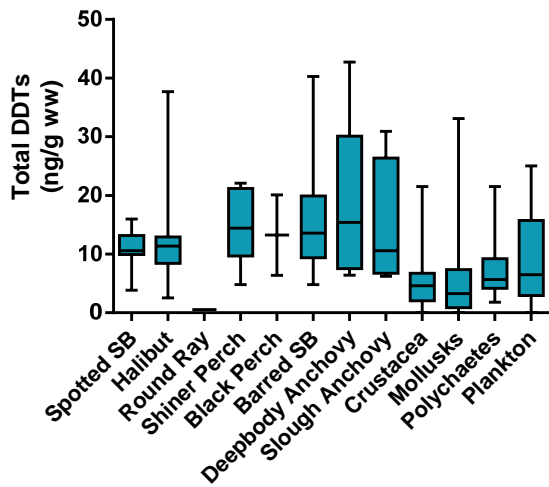
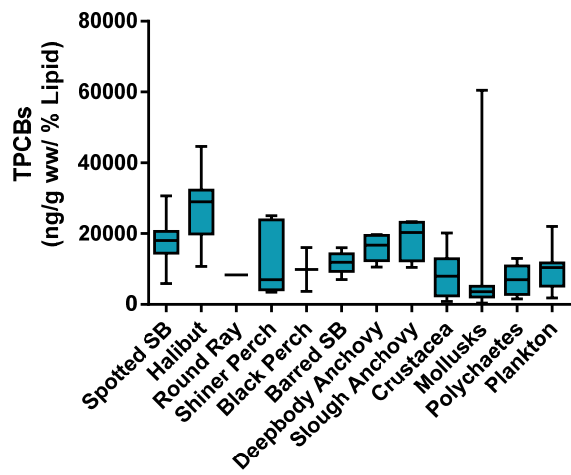
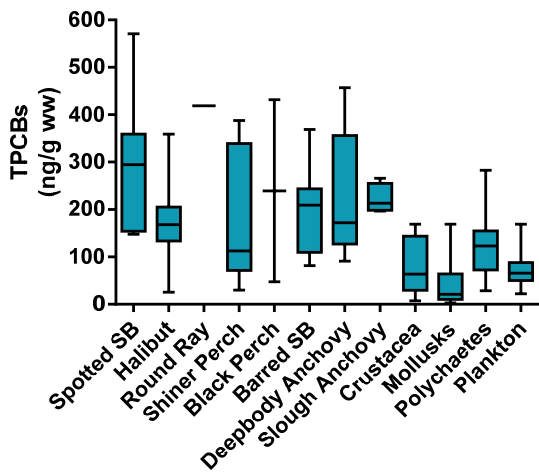
**This page left intentionally blank**



**Tissue Concentration Comparison Among Species for Total PCBs,  
DDTs, and Mercury**

**Raw Concentrations and Lipid Normalized**

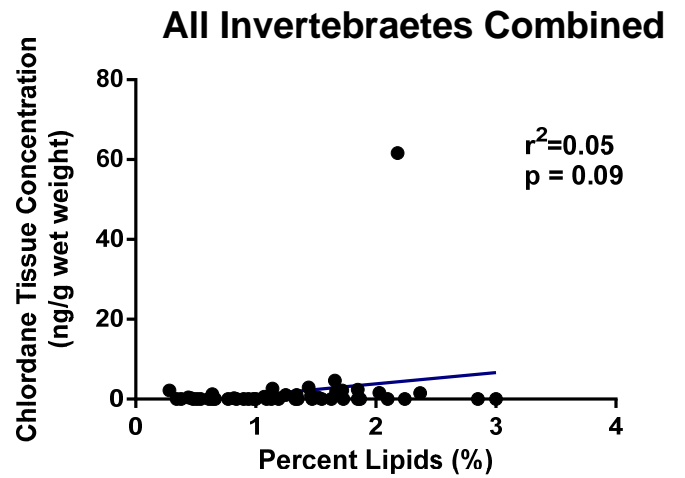
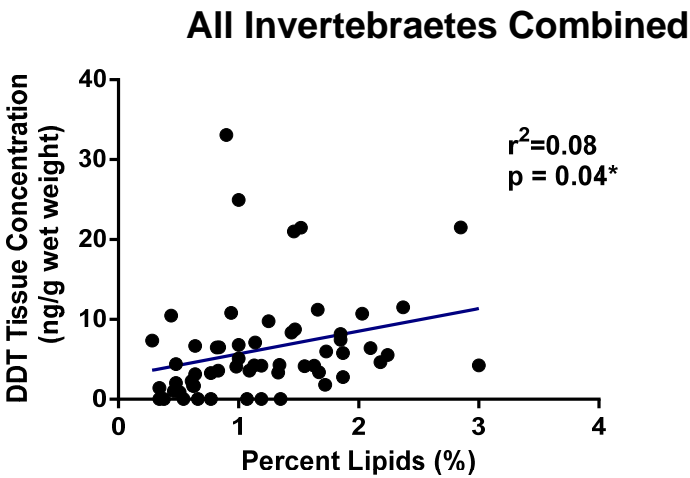
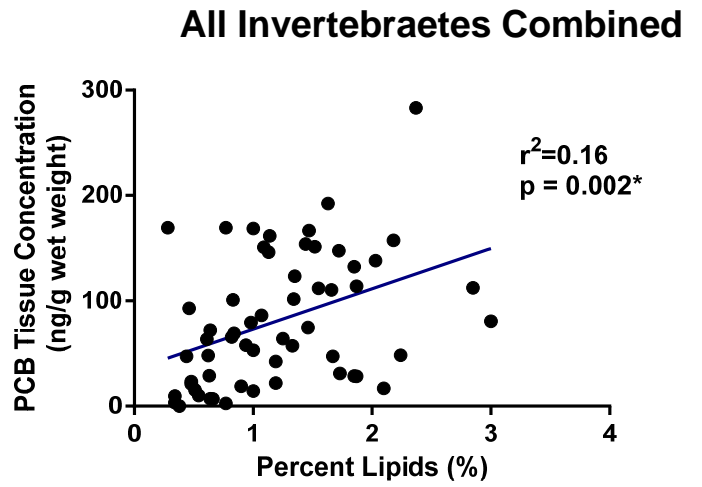
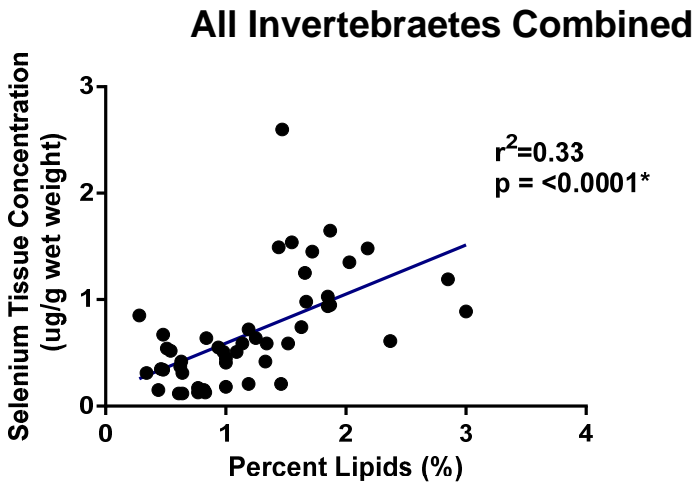
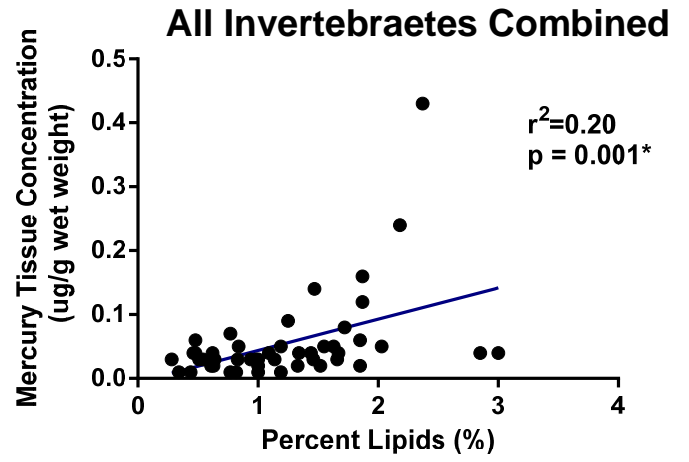
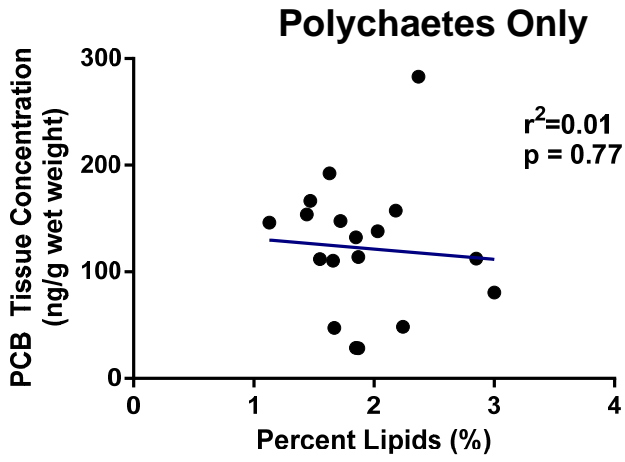
**This page left intentionally blank**



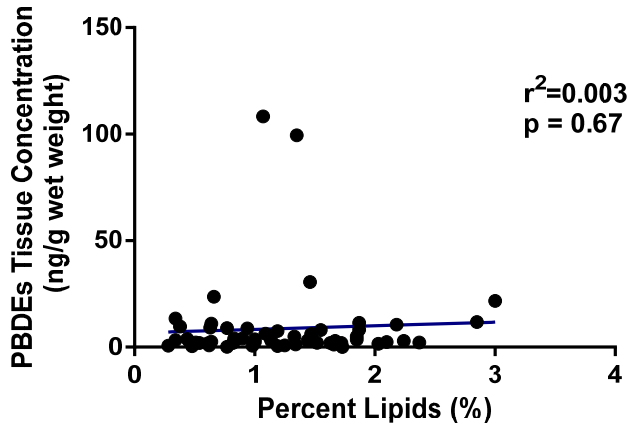
This page left intentionally blank

## **Regression Relationships Between Lipid Content and Tissue COPC Concentrations**

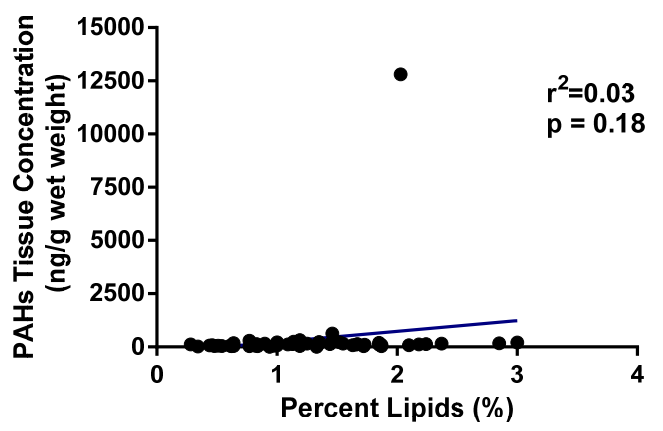
**This page left intentionally blank**



All Invertebrates Combined

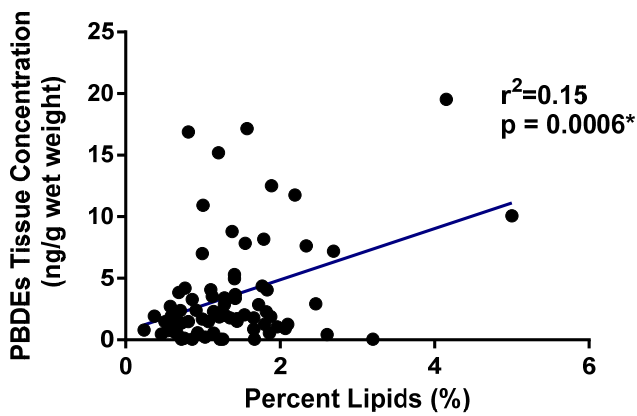
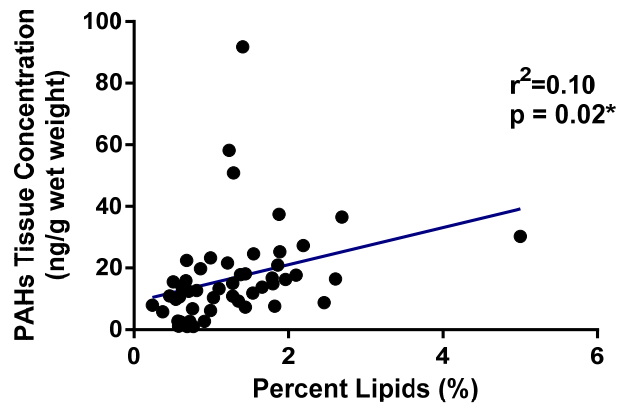
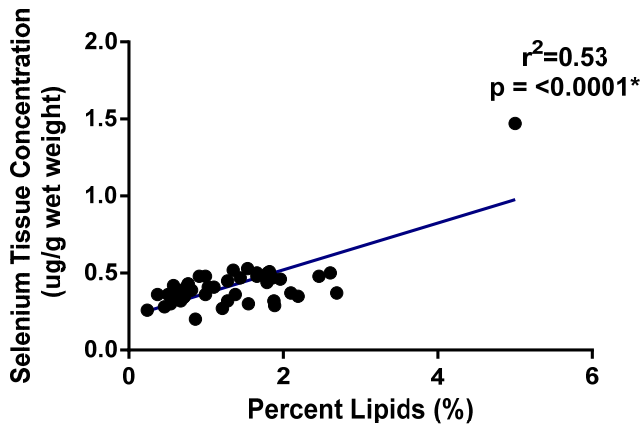
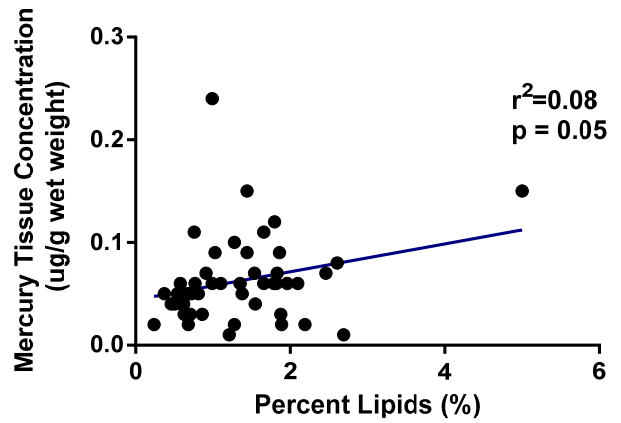
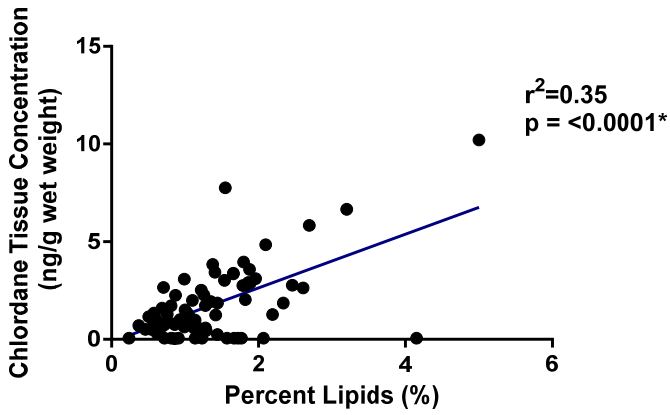
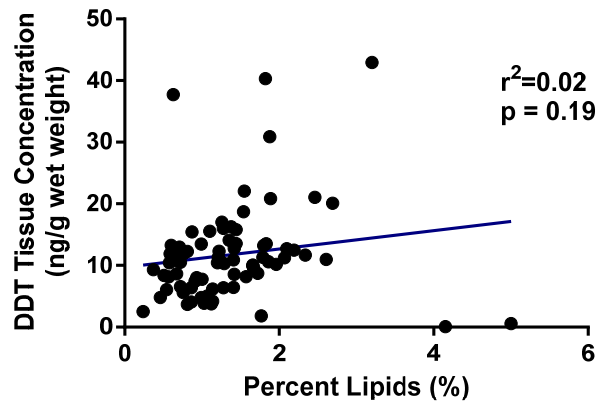
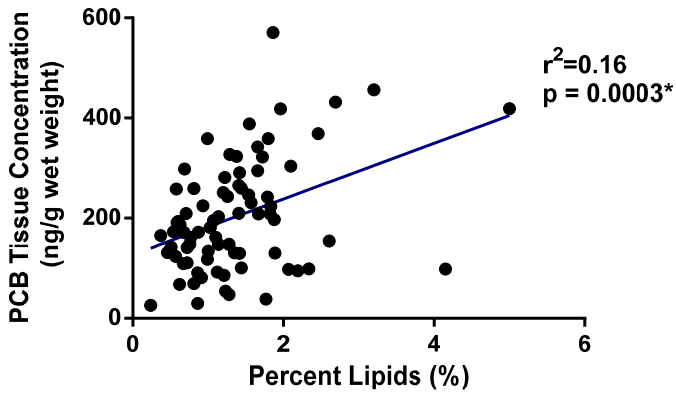


All Invertebrates Combined

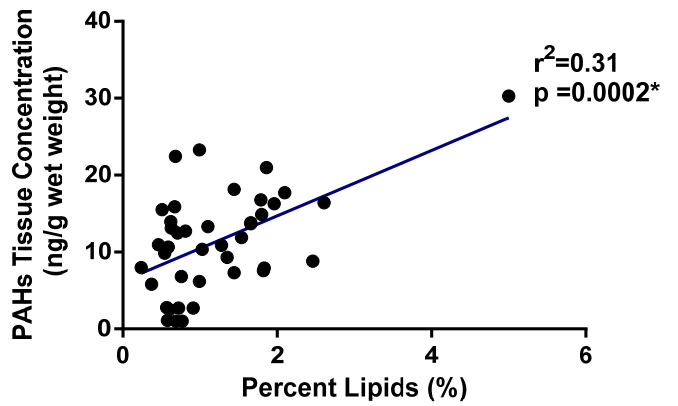
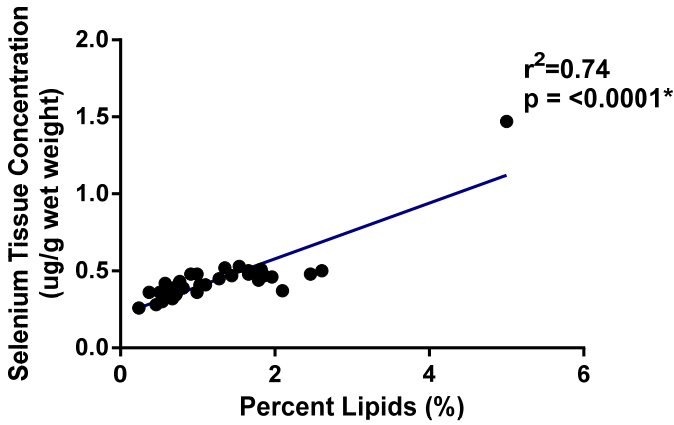
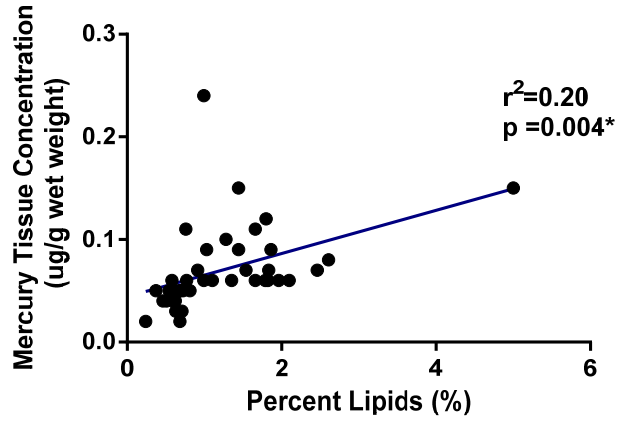
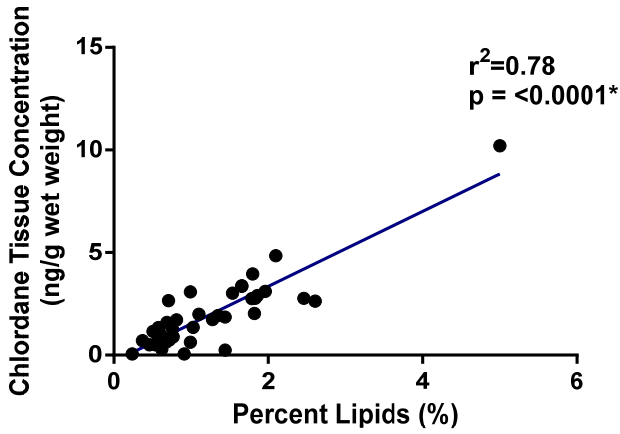
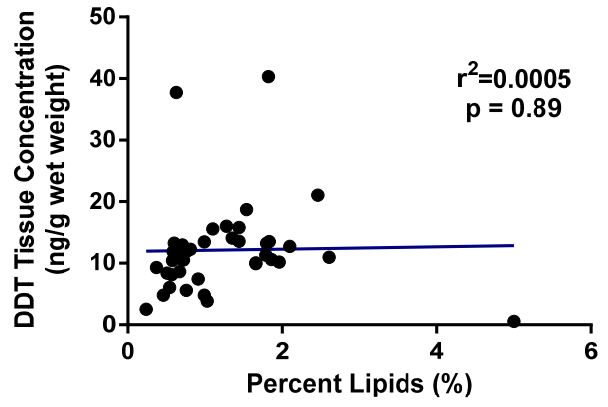
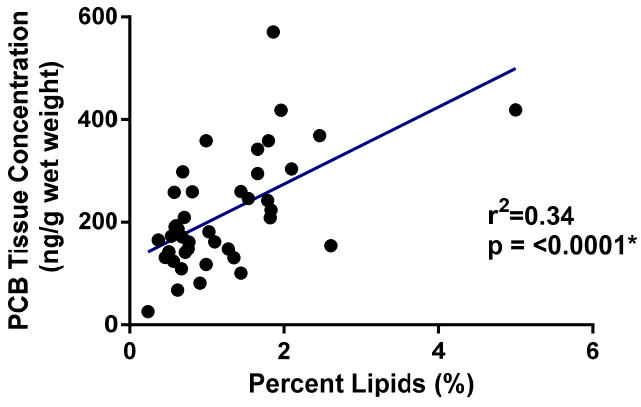




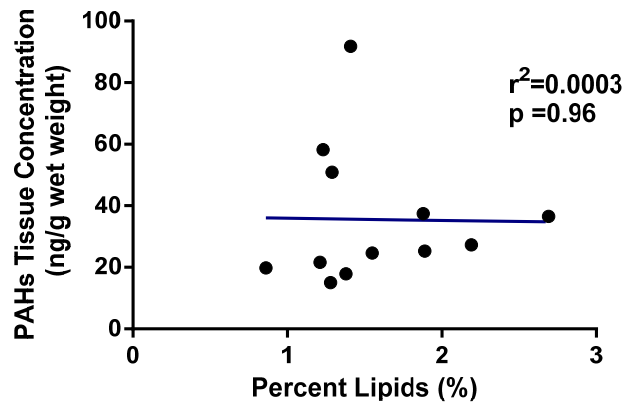
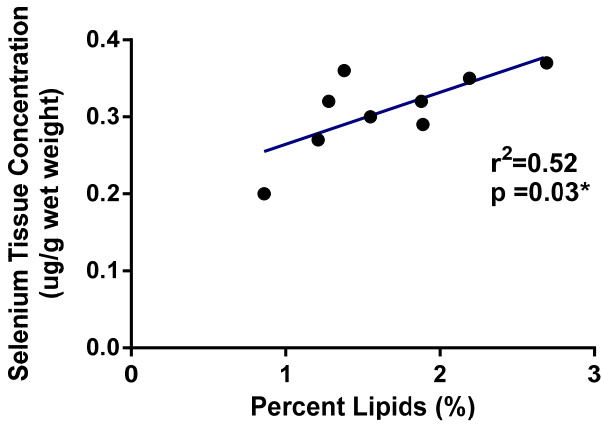
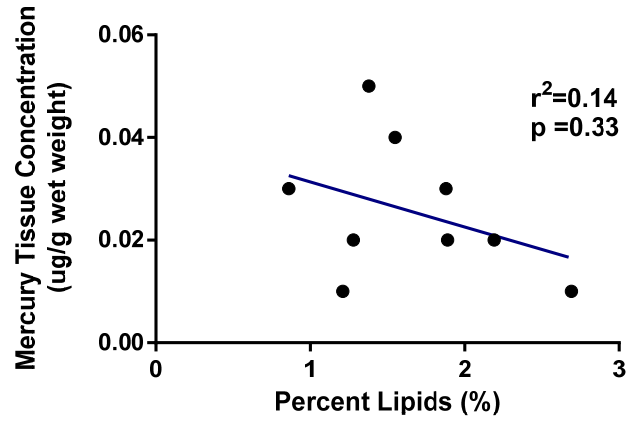
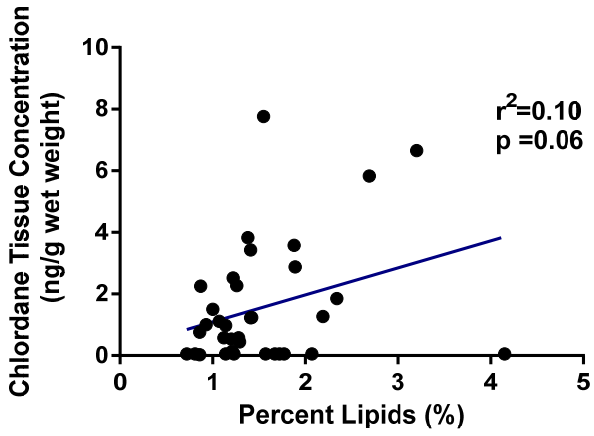
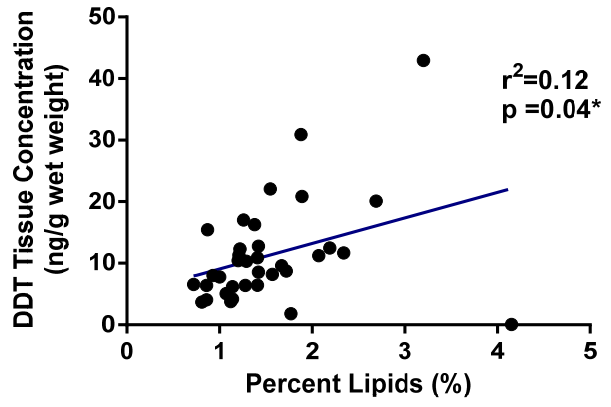
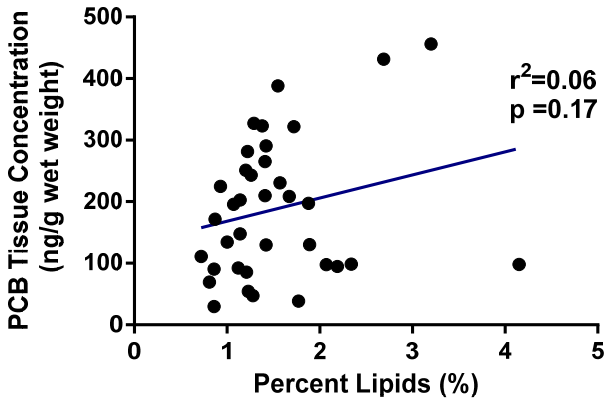
# All Fish



# Predator Fish



# Forage Fish



This page left intentionally blank

**BSAF Calculations for Total PCBs, Total DDTs,  
and Total Mercury**

This page left intentionally blank

**Appendix Table E-1. Biota-Sediment Accumulation Factors for Total PCBs**

Site	Organism	Total PCB Tissue Conc. (ng/g ww)	Tissue Lipid Conc. (%)	TPCB Tissue Conc. (ng/g ww/lipid)	Total PCB Sediment Conc. (ng/g dw)	Sediment TOC Conc. (%)	Total PCB Conc. (ng/g dw/TOC)	BSAF - Not Normalized	BSAF - Normalized Based on Tissue Lipid and Sediment TOC Conc.
RHMP B13-8017	Crustacea	28.8	0.63	4571	4.96	1.51	328	5.81	13.9
	Polychaetes	80.7	3.00	2690				16.3	8.19
	Deepbody anchovy	90.6	0.86	10529				18.3	32.1
	Round stingray	419	5.00	8373				84.4	25.5
	Barred sand bass	101	1.44	7012				20.4	21.3
RHMP B13-8020	Crustacea	57.9	0.94	6164	11.8	1.7	714	4.92	8.63
	Polychaetes	28.4	1.87	1520				2.41	2.13
	Deepbody anchovy*	163	0.97	16757				13.8	23.5
	Slough anchovy	203	1.14	17782				17.2	24.9
	Barred sand bass	81.4	0.91	8943				6.91	12.5
	California halibut	161	0.77	20943				13.7	29.3
RHMP B13-8029	Mollusks	9.7	0.34	2856	6.57	1.51	435	1.48	6.56
	Polychaetes	112	2.85	3944				17.1	9.06
	Deepbody anchovy	172	0.87	19726				26.1	45.3
	Barred sand bass	131	1.35	9679				19.9	22.2
	California halibut	162	1.10	14716				24.6	33.8
RHMP B13-8052	Mollusks	10.2	0.54	1885	3.07	0.58	529	3.32	3.56
	Polychaetes	114	1.87	6091				37.1	11.5
	Deepbody anchovy*	457	3.22	14193				149	26.8
	Slough Anchovy*	223	0.98	22755				72.6	43.0
	Barred sand bass	118	0.99	11911				38.4	22.5
	California halibut	298	0.69	43257				97.2	81.7
RHMP B13-8060	Crustacea	69.2	0.84	8239	5.84	1.44	406	11.9	20.3
	Polychaetes	157	2.18	7224				27.0	17.8
	Deepbody anchovy*	255	1.32	19337				43.7	47.7
	Slough anchovy*	266	1.14	23343				45.6	57.6
	Barred sand bass	369	2.46	14995				63.2	37.0
	Spotted sand bass	342	1.66	20612				58.6	50.8
	California halibut	258	0.58	44514				44.2	110
RHMP B13-8078	Crustacea	57.3	1.33	4311	8.71	0.71	1227	6.58	3.51
	Polychaetes	112	1.55	7216				12.8	5.88
	Spotted sand bass	148	0.76	19538				17.0	15.9
	California halibut	165	0.37	44646				19.0	36.4
RHMP B13-8109	Crustacea	151	1.52	9965	3.66	0.50	732	41.4	13.6
	Polychaetes	132	1.85	7161				36.2	9.78
	Barred sand bass	246	1.54	15992				67.3	21.8
	California halibut	124	0.57	21744				33.9	29.7
RHMP B13-8118	Crustacea	162	1.14	14173	9.34	1.09	857	17.3	16.5
	Polychaetes	167	1.47	11341				17.8	13.2
	Barred sand bass - small	209	1.82	11484				22.4	13.4
	Barred sand bass - large	224	1.83	12240				24.0	14.3
	California halibut - small	193	0.60	32167				20.7	37.5
	California halibut - large	141	0.72	19583				15.1	22.9
RHMP B13-8122	Crustacea	169	1.00	16859	8.26	0.30	2753	20.4	6.12
	Polychaetes	154	1.44	10691				18.6	3.88
	Barred sand bass	242	1.79	13532				29.3	4.91
	California halibut	187	0.63	29657				22.6	10.8
SWHB-01	Plankton	169	0.77	22006	5.67	0.88	644	29.9	34.2
	Brown Shrimp	48	0.62	7758				8.48	12.0
	Crustacea - Benthic	151	1.09	13841				26.6	21.5
	Mollusks	169	0.28	60507				29.9	93.9
	Polychaetes	283	2.37	11944				49.9	18.5
	Shiner perch	94.8	2.19	4330				16.7	6.72
	Spotted sand bass	571	1.86	30677				101	47.6
	California halibut	142	0.51	27880				25.1	43.3
SWHB-06	Plankton	101	0.83	12143	2.62	0.35	749	38.5	16.2
	Mollusks	21.1	0.48	4404				8.07	5.88
	Polychaetes	148	1.72	8580				56.3	11.5
	Spotted sand bass	359	1.80	19936				137	26.6
	California halibut - small	131	0.46	28508				50.1	38.1
	California halibut - large	173	0.54	31999				66.0	42.7

**Appendix Table E-1. Biota-Sediment Accumulation Factors for Total PCBs**

Site	Organism	Total PCB Tissue Conc. (ng/g ww)	Tissue Lipid Conc. (%)	TPCB Tissue Conc. (ng/g ww/lipid)	Total PCB Sediment Conc. (ng/g dw)	Sediment TOC Conc. (%)	Total PCB Conc. (ng/g dw/TOC)	BSAF - Not Normalized	BSAF - Normalized Based on Tissue Lipid and Sediment TOC Conc.
SWHB-15	Plankton	53.1	1.00	5311	1.81	0.63	287	29.3	18.5
	Crustacea	31.0	1.73	1794				17.1	6.24
	Mollusks	2.70	0.77	351				1.49	1.22
	Polychaetes	48.3	2.24	2154				26.7	7.50
	Slough anchovy	197	1.88	10487				109	36.5
	Spotted sand bass	260	1.44	18024				143	62.7
	California halibut	68.0	0.62	10960				37.5	38.1
SWHB-21	Plankton	47.3	0.44	10750	2.08	0.23	904	22.7	11.9
	Crustacea	123	1.35	9134				59.3	10.1
	Mollusks	23.4	0.48	4865				11.2	5.38
	Polychaetes	146	1.13	12939				70.3	14.3
	Spotted sand bass	295	1.66	17756				142	19.6
	California halibut - small	171	0.68	25219				82.4	27.9
	California halibut - large	191	0.59	32319				91.7	35.7
SWHB-22	Plankton	65.7	0.82	8017	10.4	0.7	1480	6.35	5.42
	Mollusks	15.3	0.51	2998				1.48	2.03
	Polychaetes	47.4	1.67	2841				4.58	1.92
	Shiner perch	85.5	1.21	7067				8.25	4.77
	Spotted sand bass	154	2.61	5918				14.9	4.00
	California halibut	109	0.67	16339				10.6	11.0
SWHB-26	Plankton	72.0	0.64	11250	7.11	0.28	2539	10.1	4.43
	Brown Shrimp	7.2	0.64	1130				1.0	0.44
	Crustacea - Benthic	79.3	0.98	8092				11.2	3.19
	Mollusks	64.2	1.25	5135				9.03	2.02
	Polychaetes	110	1.66	6648				15.5	2.62
	Black perch	432	2.69	16041				60.7	6.32
	Shiner perch - small	130	1.89	6881				18.3	2.71
	Shiner perch - large	30.0	0.86	3483				4.21	1.37
	Spotted sand bass	304	2.10	14458				42.7	5.69
	California halibut	259	0.81	32031				36.5	12.6
SWHB-27	Plankton	74.6	1.46	5108	36.8	0.3	12280	2.02	0.42
	Mollusks	42.5	1.19	3569				1.15	0.29
	Polychaetes	138	2.03	6799				3.75	0.55
	Shiner perch	388	1.55	25041				10.5	2.04
	Spotted sand bass	418	1.96	21345				11.4	1.74
	California halibut	209	0.71	29477				5.68	2.40
SWHB-30	Plankton	21.9	1.19	1843	0.58	0.24	242	37.8	7.63
	Crustacea - Crabs	14.3	1.00	1425				24.6	5.90
	Crustacea - Shrimp	16.8	2.10	802				29.0	3.32
	Mollusks	18.9	0.90	2104				32.7	8.71
	Polychaetes	28.5	1.85	1542				49.2	6.38
	Black perch	47.2	1.28	3690				81.4	15.3
	Spotted sand bass	148	1.28	11532				255	47.7
	California halibut	25.7	0.24	10704				44.3	44.3
SWHB-40	Plankton	63.6	0.61	10420	4.23	0.62	682	15.0	15.3
	Crustacea	92.8	0.46	20163				21.9	29.6
	Mollusks	102	1.34	7584				24.0	11.1
	Polychaetes	192	1.63	11803				45.5	17.3
	Shiner perch	323	1.38	23425				76.4	34.3
	Spotted sand bass	181	1.03	17610				42.9	25.8
	California halibut	359	0.99	36233				84.8	53.1

\* Data averaged for replicate samples



**Appendix Table E-2. Biota-Sediment Accumulation Factors for Total DDTs**

Site	Organism	Total DDT Tissue Conc. (ng/g ww)	Tissue Lipid Conc. (%)	Total DDT Tissue Conc. (ng/g ww/lipid)	Total DDT Sediment Conc. (ng/g dw)	Sediment TOC Conc. (%)	Total DDT Conc. (ng/g dw/TOC)	BSAF - Not Normalized	BSAF - Normalized Based on Tissue Lipid and Sediment TOC Conc.
RHMP B13-8017	Crustacea	1.68	0.63	267	0.025	1.51	1.66	67	161
	Polychaetes	4.26	3.00	142				170	86
	Deepbody anchovy	6.41	0.86	745				256	450
	Round stingray	0.55	5.00	11				22.0	6.6
	Barred sand bass	13.6	1.44	944				544	570
RHMP B13-8020	Crustacea	10.8	0.94	1149	0.025	1.65	1.52	432	758
	Polychaetes	2.79	1.87	149				112	98
	Deepbody anchovy*	8.65	0.97	892				346	589
	Slough anchovy	6.19	1.14	543				248	358
	Barred sand bass	7.45	0.91	819				298	540
	California halibut	12.0	0.77	1558				480	1029
RHMP B13-8029	Mollusks	1.42	0.34	418	0.025	1.51	1.66	56.8	252
	Polychaetes	21.5	2.85	754				860	456
	Deepbody anchovy	15.4	0.87	1770				616	1069
	Barred sand bass	14.1	1.35	1044				564	631
	California halibut	15.6	1.10	1418				624	857
RHMP B13-8052	Mollusks	0.025	0.54	5	0.025	0.58	4.31	1.0	1.1
	Polychaetes	5.79	1.87	310				232	72
	Deepbody anchovy*	42.7	3.22	1326				1708	308
	Slough Anchovy*	8.34	0.98	851				334	197
	Barred sand bass	4.82	0.99	487				193	113
	California halibut	12.7	0.69	1841				508	427
RHMP B13-8060	Crustacea	6.52	0.84	776	0.025	1.44	1.74	261	447
	Polychaetes	4.65	2.18	213				186	123
	Deepbody anchovy*	17.5	1.32	1326				700	764
	Slough anchovy*	12.8	1.14	1122				512	646
	Barred sand bass	21.1	2.46	858				844	494
	Spotted sand bass	10.1	1.66	608				404	350
	California halibut	10.4	0.58	1793				416	1033
RHMP B13-8078	Crustacea	3.34	1.33	251	0.025	0.71	3.52	134	71
	Polychaetes	4.14	1.55	267				166	76
	Spotted sand bass	5.62	0.76	739				225	210
	California halibut	9.31	0.37	2516				372	715
RHMP B13-8109	Crustacea	21.5	1.52	1414	0.025	0.50	5.00	860	283
	Polychaetes	8.17	1.85	442				327	88
	Barred sand bass	18.7	1.54	1214				748	243
	California halibut	8.16	0.57	1432				326	286
RHMP B13-8118	Crustacea	7.12	1.14	625	0.025	1.09	2.29	285	272
	Polychaetes	8.74	1.47	595				350	259
	Barred sand bass - small	40.3	1.82	2214				1612	965
	Barred sand bass - large	13.5	1.83	738				540	322
	California halibut - small	13.1	0.60	2183				524	952
	California halibut - large	10.5	0.72	1458				420	636
RHMP B13-8122	Crustacea	6.82	1.00	682	0.025	0.30	8.33	273	82
	Polychaetes	8.36	1.44	581				334	70
	Barred sand bass	11.3	1.79	631				452	76
	California halibut	37.7	0.63	5984				1508	718
SWHB-01	Plankton	0.025	0.77	3	0.025	0.88	2.84	1.0	1.1
	Brown Shrimp	1.67	0.62	269				67	95
	Crustacea - Benthic	3.58	1.09	328				143	116
	Mollusks	7.36	0.28	2629				294	925
	Polychaetes	11.5	2.37	485				460	171
	Shiner perch	12.5	2.19	571				500	201
	Spotted sand bass	10.6	1.86	570				424	201
	California halibut	8.39	0.51	1645				336	579
SWHB-06	Plankton	3.59	0.83	433	0.025	0.35	7.14	144	61
	Mollusks	2.05	0.48	427				82	60
	Polychaetes	1.81	1.72	105				72	15
	Spotted sand bass	13.2	1.80	733				528	103
	California halibut - small	4.82	0.46	1048				193	147
	California halibut - large	6.08	0.54	1126				243	158

**Appendix Table E-2. Biota-Sediment Accumulation Factors for Total DDTs**

Site	Organism	Total DDT Tissue Conc. (ng/g ww)	Tissue Lipid Conc. (%)	Total DDT Tissue Conc. (ng/g ww/lipid)	Total DDT Sediment Conc. (ng/g dw)	Sediment TOC Conc. (%)	Total DDT Conc. (ng/g dw/TOC)	BSAF - Not Normalized	BSAF - Normalized Based on Tissue Lipid and Sediment TOC Conc.
SWHB-15	Plankton	25.0	1.00	2500	0.93	0.63	148	27	17
	Crustacea	5.97	1.73	345				6.4	2.3
	Mollusks	3.29	0.77	427				3.5	2.9
	Polychaetes	5.55	2.24	248				6.0	1.7
	Slough anchovy	30.9	1.88	1644				33	11
	Spotted sand bass	15.8	1.44	1097				17	7.4
	California halibut	12.2	0.62	1968				13	13
SWHB-21	Plankton	10.50	0.44	2386	0.11	0.23	47.8	95	50
	Crustacea	0.025	1.35	2				0.2	0.04
	Mollusks	4.42	0.48	921				40	19
	Polychaetes	4.26	1.13	377				39	7.9
	Spotted sand bass	9.94	1.66	599				90	13
	California halibut - small	10.8	0.68	1588				98	33
	California halibut - large	11.9	0.59	2017				108	42
SWHB-22	Plankton	6.49	0.82	791	0.025	0.7	3.57	260	222
	Mollusks	0.90	0.51	176				36	49
	Polychaetes	3.39	1.67	203				136	57
	Shiner perch	11.3	1.21	934				452	261
	Spotted sand bass	11.0	2.61	421				440	118
	California halibut	8.64	0.67	1290				346	361
SWHB-26	Plankton	6.69	0.64	1045	0.025	0.28	8.93	268	117
	Brown Shrimp	3.16	0.64	494				126	55
	Crustacea - Benthic	4.08	0.98	416				163	47
	Mollusks	9.79	1.25	783				392	88
	Polychaetes	11.2	1.66	675				448	76
	Black perch	20.1	2.69	747				804	84
	Shiner perch - small	20.9	1.89	1106				836	124
	Shiner perch - large	4.80	0.86	558				192	63
	Spotted sand bass	12.70	2.10	605				508	68
California halibut	12.30	0.81	1519	492	170				
SWHB-27	Plankton	21.0	1.46	1438	0.26	0.30	86.7	81	17
	Mollusks	0.025	1.19	2				0.1	0.0
	Polychaetes	10.7	2.03	527				41	6.1
	Shiner perch	22.1	1.55	1426				85	16
	Spotted sand bass	10.2	1.96	520				39	6.0
	California halibut	13.0	0.71	1831				50	21
SWHB-30	Plankton	4.23	1.19	355	0.025	0.24	10.4	169	34
	Crustacea - Crabs	5.11	1.00	511				204	49
	Crustacea - Shrimp	6.43	2.10	306				257	29
	Mollusks	33.1	0.90	3678				1324	353
	Polychaetes	7.44	1.85	402				298	39
	Black perch	6.39	1.28	499				256	48
	Spotted sand bass	16.0	1.28	1250				640	120
	California halibut	2.52	0.24	1050				101	101
SWHB-40	Plankton	2.27	0.61	372	0.025	0.62	4.03	91	92
	Crustacea	1.06	0.46	230				42	57
	Mollusks	4.32	1.34	322				173	80
	Polychaetes	4.21	1.63	258				168	64
	Shiner perch	16.3	1.38	1181				652	293
	Spotted sand bass	3.85	1.03	374				154	93
	California halibut	13.5	0.99	1364				540	338

\* Data averaged for replicate samples

NT = Not tested; NA = Not applicable

Italicized values reported as 0.025 represent non-detect concentrations equivalent to 1/2 of the MDL.

**Appendix Table E-3. Biota-Sediment Accumulation Factors for Total Mercury**

Site	Organism	Total Hg Tissue Conc. (ng/g ww)	Tissue Lipid Conc. (%)	Hg Tissue Conc. (ng/g ww/lipid)	Total Hg Sediment Conc. (ng/g dw)	Sediment TOC Conc. (%)	Total Hg Conc. (ng/g dw/TOC)	BSAF - Not Normalized	BSAF - Normalized Based on Tissue Lipid and Sediment TOC Conc.
RHMP B13-8017	Crustacea	23	0.63	3651	219	1.51	14503	0.11	0.25
	Polychaetes	41	3.00	1367				0.19	0.09
	Deepbody anchovy	25	0.86	2907				0.11	0.20
	Round stingray	151	5.00	3020				0.69	0.21
	Barred sand bass	87	1.44	6042				0.40	0.42
RHMP B13-8020	Crustacea	33	0.94	3511	629	1.7	38121	0.05	0.09
	Polychaetes	165	1.87	8824				0.26	0.23
	Deepbody anchovy*	24	0.97	2505				0.04	0.07
	Slough anchovy	19	1.14	1667				0.03	0.04
	Barred sand bass	69	0.91	7582				0.11	0.20
	California halibut	62	0.77	8052				0.10	0.21
RHMP B13-8029	Mollusks	13	0.34	3824	121	1.51	8013	0.11	0.48
	Polychaetes	43	2.85	1509				0.36	0.19
	Deepbody anchovy	19	0.87	2184				0.16	0.27
	Barred sand bass	56	1.35	4148				0.46	0.52
	California halibut	62	1.10	5636				0.51	0.70
RHMP B13-8052	Mollusks	35	0.54	6481	294	0.58	50690	0.12	0.13
	Polychaetes	125	1.87	6684				0.43	0.13
	Deepbody anchovy*	107	3.22	3323				0.36	0.07
	Slough Anchovy*	24	0.98	2418				0.08	0.05
	Barred sand bass	61	0.99	6162				0.21	0.12
	California halibut	47	0.69	6812				0.16	0.13
RHMP B13-8060	Crustacea	55	0.84	6548	335	1.44	23264	0.16	0.28
	Polychaetes	236	2.18	10826				0.70	0.47
	Deepbody anchovy*	35	1.32	2629				0.10	0.11
	Slough anchovy*	40	1.14	3509				0.12	0.15
	Barred sand bass	68	2.46	2764				0.20	0.12
	Spotted sand bass	107	1.66	6446				0.32	0.28
	California halibut	63	0.58	10862				0.19	0.47
RHMP B13-8078	Crustacea	24	1.33	1805	299	0.71	42113	0.08	0.04
	Polychaetes	51	1.55	3290				0.17	0.08
	Spotted sand bass	113	0.76	14868				0.38	0.35
	California halibut	45	0.37	12162				0.15	0.29
RHMP B13-8109	Crustacea	22	1.52	1447	234	0.50	46800	0.09	0.03
	Polychaetes	60	1.85	3243				0.26	0.07
	Barred sand bass	70	1.54	4545				0.30	0.10
	California halibut	52	0.57	9123				0.22	0.19
RHMP B13-8118	Crustacea	35	1.14	3070	620	1.09	56881	0.06	0.05
	Polychaetes	135	1.47	9184				0.22	0.16
	Barred sand bass - small	62	1.82	3407				0.10	0.06
	Barred sand bass - large	71	1.83	3880				0.11	0.07
	California halibut - small	46	0.60	7667				0.07	0.13
	California halibut - large	51	0.72	7083				0.08	0.12
RHMP B13-8122	Crustacea	29	1.00	2900	172	0.30	57333	0.17	0.05
	Polychaetes	38	1.44	2639				0.22	0.05
	Barred sand bass	58	1.79	3240				0.34	0.06
	California halibut	30	0.63	4762				0.17	0.08
SWHB-01	Plankton	72	0.77	9351	319	0.88	36250	0.23	0.26
	Brown Shrimp	41	0.62	6613				0.13	0.18
	Crustacea - Benthic	36	1.09	3303				0.11	0.09
	Mollusks	33	0.28	11786				0.10	0.33
	Polychaetes	429	2.37	18101				1.34	0.50
	Shiner perch	16	2.19	731				0.05	0.02
	Spotted sand bass	91	1.86	4892				0.29	0.13
	California halibut	45	0.51	8824				0.14	0.24
SWHB-06	Plankton	34	0.83	4096	59.0	0.35	16857	0.58	0.24
	Mollusks	62	0.48	12917				1.05	0.77
	Polychaetes	79	1.72	4593				1.34	0.27
	Spotted sand bass	124	1.80	6889				2.10	0.41
	California halibut - small	36	0.46	7826				0.61	0.46
	California halibut - large	45	0.54	8333				0.76	0.49

**Appendix Table E-3. Biota-Sediment Accumulation Factors for Total Mercury**

Site	Organism	Total Hg Tissue Conc. (ng/g ww)	Tissue Lipid Conc. (%)	Hg Tissue Conc. (ng/g ww/lipid)	Total Hg Sediment Conc. (ng/g dw)	Sediment TOC Conc. (%)	Total Hg Conc. (ng/g dw/TOC)	BSAF - Not Normalized	BSAF - Normalized Based on Tissue Lipid and Sediment TOC Conc.
SWHB-15	Plankton	18	1.00	1800	83.0	0.63	13175	0.22	0.14
	Crustacea	NT	1.73	NA				NA	NA
	Mollusks	14	0.77	1818				0.17	0.14
	Polychaetes	NT	2.24	NA				NA	NA
	Slough anchovy	31	1.88	1649				0.37	0.13
	Spotted sand bass	154	1.44	10694				1.86	0.81
California halibut	36	0.62	5806	0.43	0.44				
SWHB-21	Plankton	6.0	0.44	1364	62.0	0.23	26957	0.10	0.05
	Crustacea	NT	1.35	NA				NA	NA
	Mollusks	37	0.48	7708				0.60	0.29
	Polychaetes	NT	1.13	NA				NA	NA
	Spotted sand bass	60	1.66	3614				0.97	0.13
	California halibut - small	23	0.68	3382				0.37	0.13
California halibut - large	43	0.59	7288	0.69	0.27				
SWHB-22	Plankton	14	0.82	1707	118	0.7	16857	0.12	0.10
	Mollusks	31	0.51	6078				0.26	0.36
	Polychaetes	37	1.67	2216				0.31	0.13
	Shiner perch	14	1.21	1157				0.12	0.07
	Spotted sand bass	79	2.61	3027				0.67	0.18
	California halibut	50	0.67	7463				0.42	0.44
SWHB-26	Plankton	29	0.64	4531	121	0.28	43214	0.24	0.10
	Brown Shrimp	29	0.64	4531				0.24	0.10
	Crustacea - Benthic	34	0.98	3469				0.28	0.08
	Mollusks	88	1.25	7040				0.73	0.16
	Polychaetes	34	1.66	2048				0.28	0.05
	Black perch	14	2.69	520				0.12	0.01
	Shiner perch - small	22	1.89	1164				0.18	0.03
	Shiner perch - large	27	0.86	3140				0.22	0.07
	Spotted sand bass	59	2.10	2810				0.49	0.07
California halibut	51	0.81	6296	0.42	0.15				
SWHB-27	Plankton	32	1.46	2192	84.0	0.3	28000	0.38	0.08
	Mollusks	49	1.19	4118				0.58	0.15
	Polychaetes	45	2.03	2217				0.54	0.08
	Shiner perch	36	1.55	2323				0.43	0.08
	Spotted sand bass	56	1.96	2857				0.67	0.10
	California halibut	34	0.71	4789				0.40	0.17
SWHB-30	Plankton	6.0	1.19	504	4.0	0.24	1667	1.5	0.30
	Crustacea - Crabs	12	1.00	1200				3.0	0.72
	Crustacea - Shrimp	NT	2.10	NA				NA	NA
	Mollusks	NT	0.90	NA				NA	NA
	Polychaetes	16	1.85	865				4.0	0.52
	Black perch	23	1.28	1797				5.8	1.1
	Spotted sand bass	103	1.28	8047				25.8	4.8
	California halibut	24	0.24	10000				6.0	6.0
SWHB-40	Plankton	15	0.61	2459	212	0.62	34194	0.07	0.07
	Crustacea	40	0.46	8696				0.19	0.25
	Mollusks	43	1.34	3209				0.20	0.09
	Polychaetes	52	1.63	3190				0.25	0.09
	Shiner perch	46	1.38	3333				0.22	0.10
	Spotted sand bass	86	1.03	8350				0.41	0.24
	California halibut	239	0.99	24141				1.13	0.71

\* Data averaged for replicate samples  
 NT = Not tested; NA = Not applicable