

TARGETS

Overall Statewide Savings Target

- Statewide Current GPCD 192
- Interim 10% reduction by 2015 = 173
 - 20% reduction by 2020

= 154 GPCD

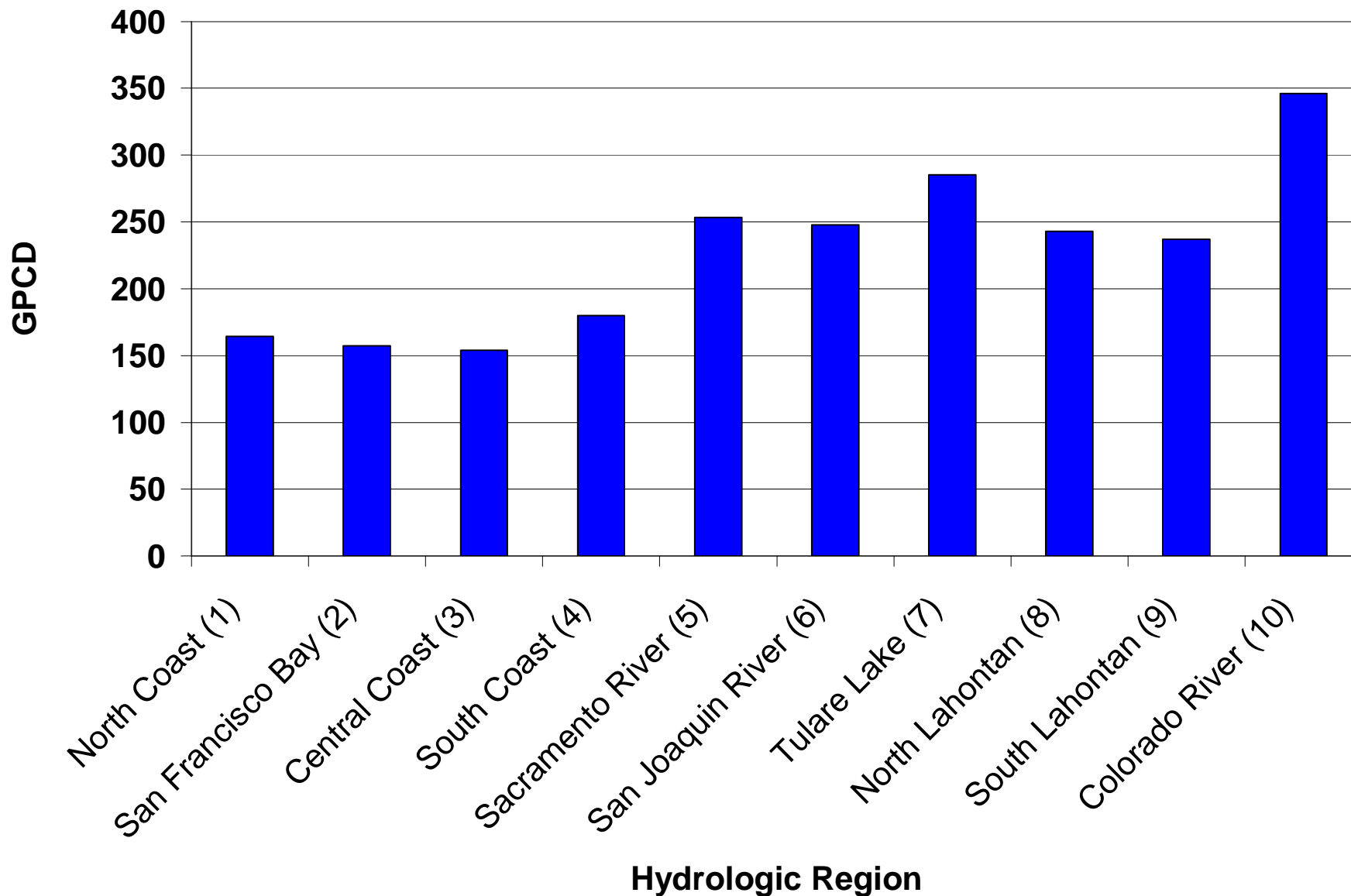
“Why do we Need to Establish Targets?”

- Serves as a target for all water suppliers to strive for.
- Statewide and Regional Targets
- Regional targets developed to:
 - Show the differences across the state.
 - Recognize the efficiencies that pro-active water suppliers have already achieved
 - Incorporate Evapotranspiration differences among regions
- Interim Target at 2015 to assess progress statewide and to determine whether adjustments are needed
- To assess progress and “to know when you have arrived”

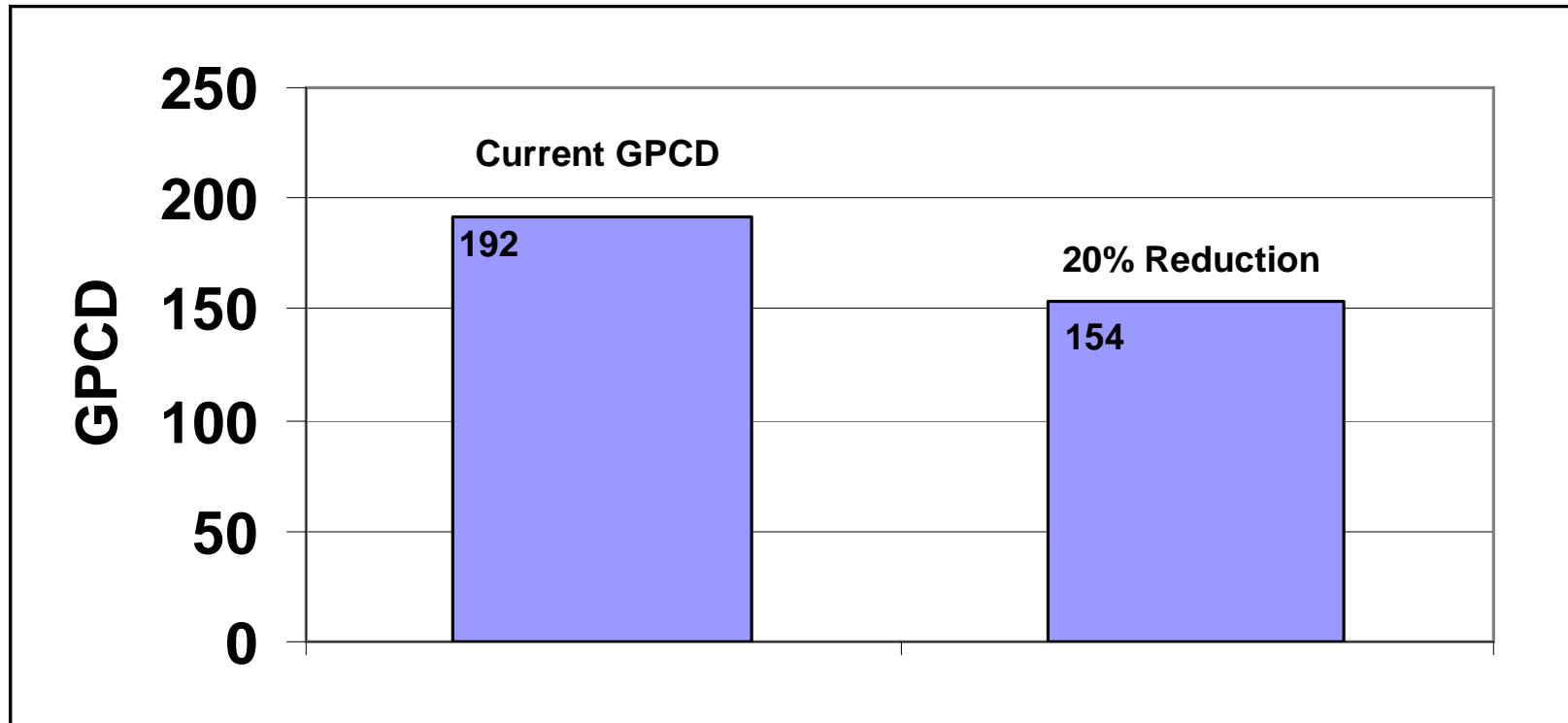
Scope of Study

- Develop Interim (2015) targets
- Develop final (2020) targets
- State and Regional targets rather than water supplier level
- Targets for total GPCD, not sectors

Current GPCD



Statewide GPCD



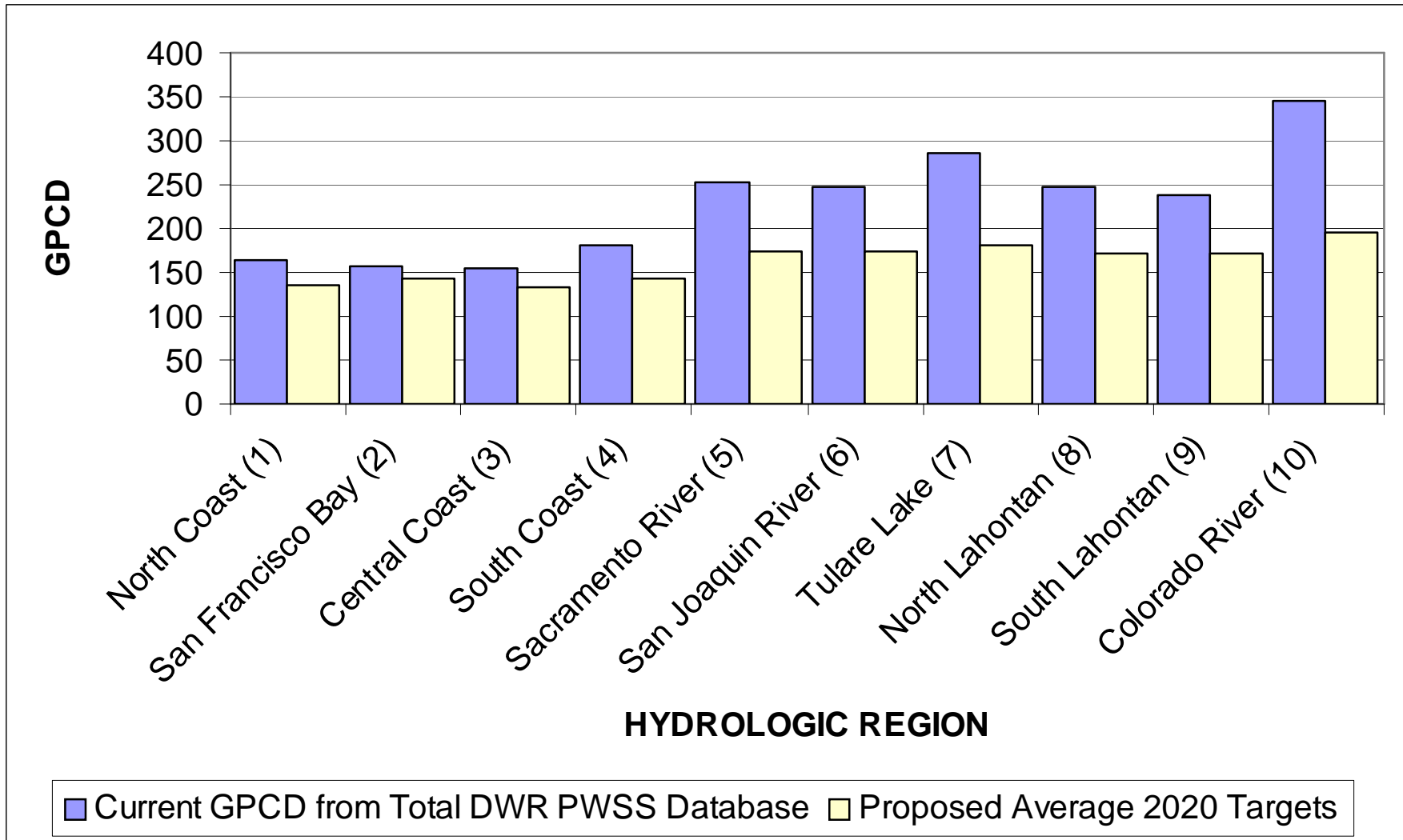
Challenge

- How best to predict regional accomplishments that will total the statewide target, considering:
 - Variable climate
 - Measures already implemented
 - Other regional differences

Why Not Set Targets by Agency?

- We are NOT setting targets for agencies to meet, we are predicting future conservation levels
- We did not have data for all agencies -- hence the regional estimates for baseline and target use levels
- Many agencies will not be able to reduce per capita use 20% due to past conservation, and other factors

Proposed Reduction in GPCD



Limitations and Qualifications

- The targets are established by state and region
- The target of 154 GPCD is a statewide target
- Regional targets cumulatively equal the statewide target.
- To make this work each water supplier continues to evaluate its position on an annual basis
- Water suppliers may provide more rigorous data sets to revise/update those presented

Limitations and Qualifications

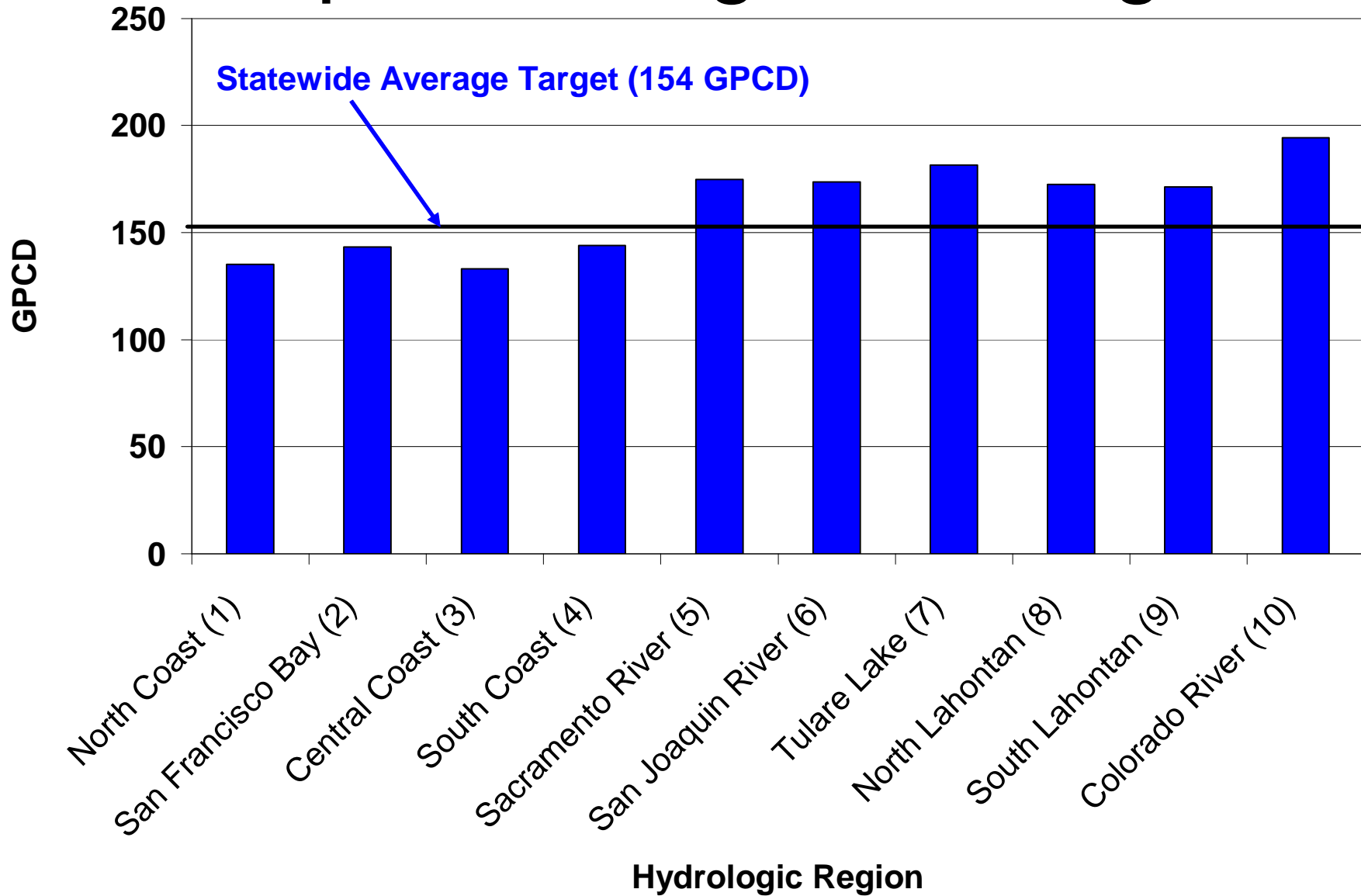
(continued)

- These data and analyses reported are the “best-available” analyses and need to be improved upon in future years
- Every Region will achieve some measure of per capita reduction through:
 - Continuing current, planned and future conservation programs
- Regional variations due to
 - Climatic variations
 - Measures already implemented
 - Other regional differences

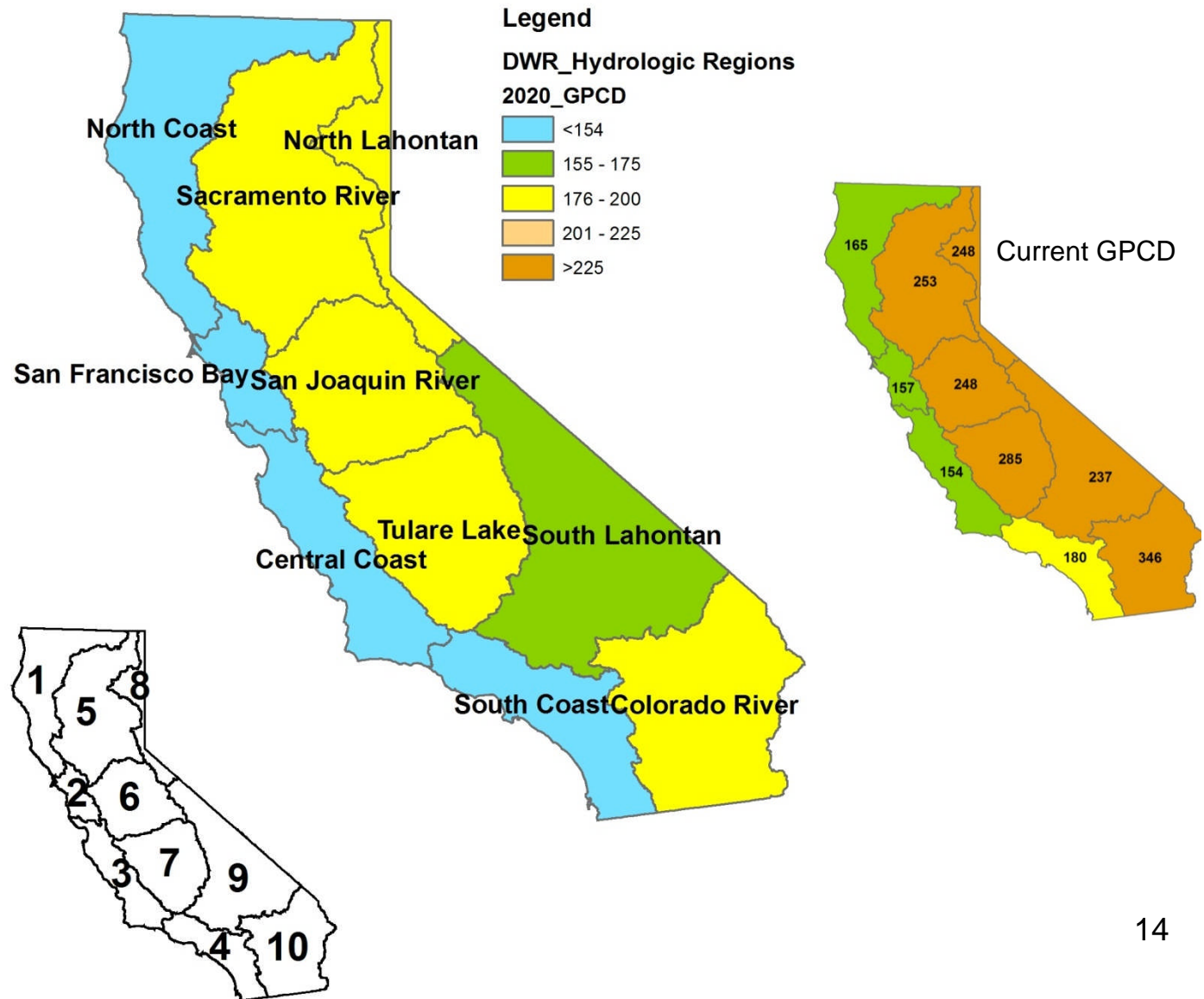
Proposed Planning Targets

- Some regions will probably be able to achieve greater conservation than others due to climate, past conservation implementation, demographics, land use, and other factors
- These regional conservation targets provide an estimate of future per capita consumption that reflects regional differences and achieves a statewide 20% reduction in per capita use

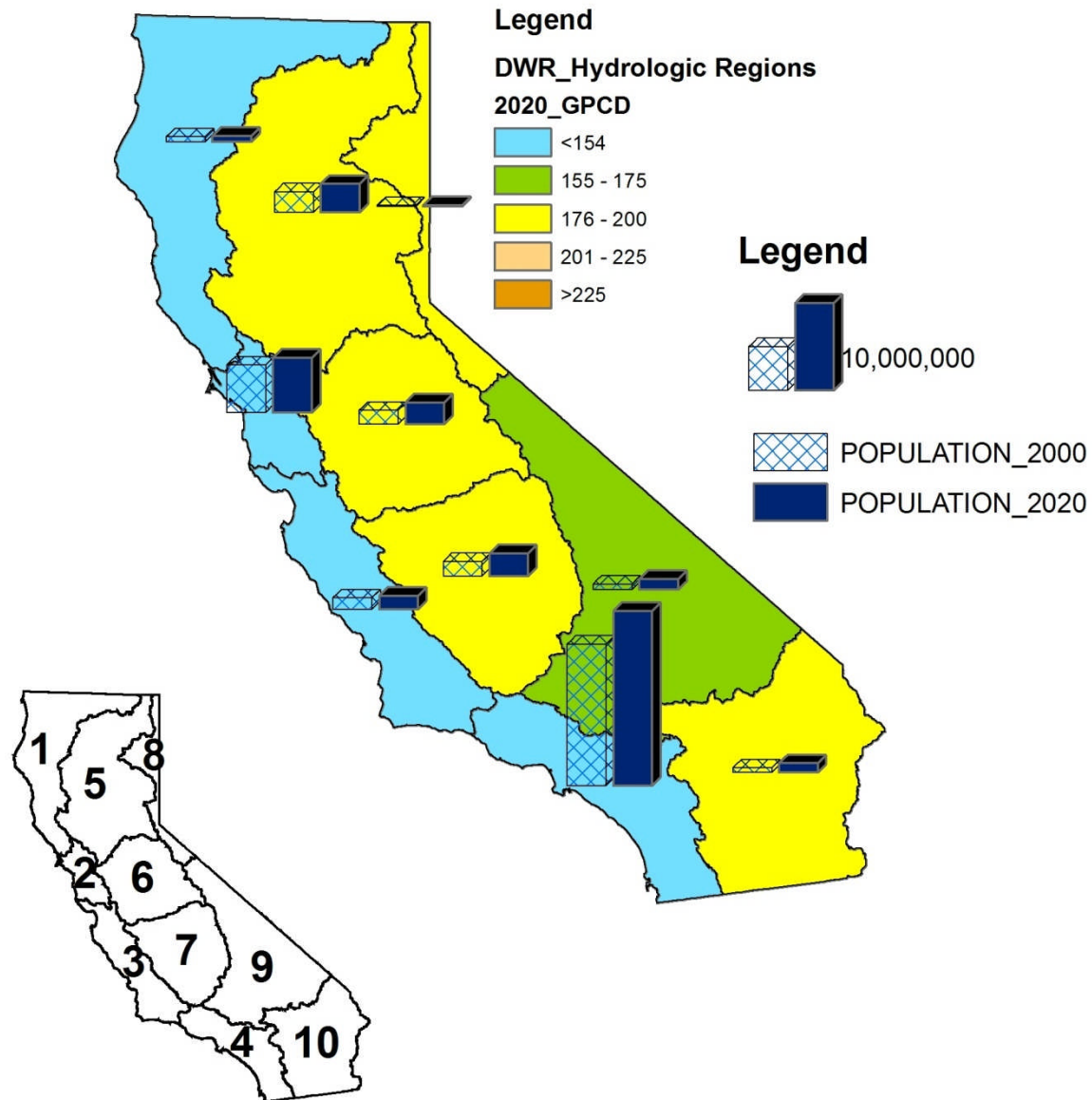
Proposed Regional Targets



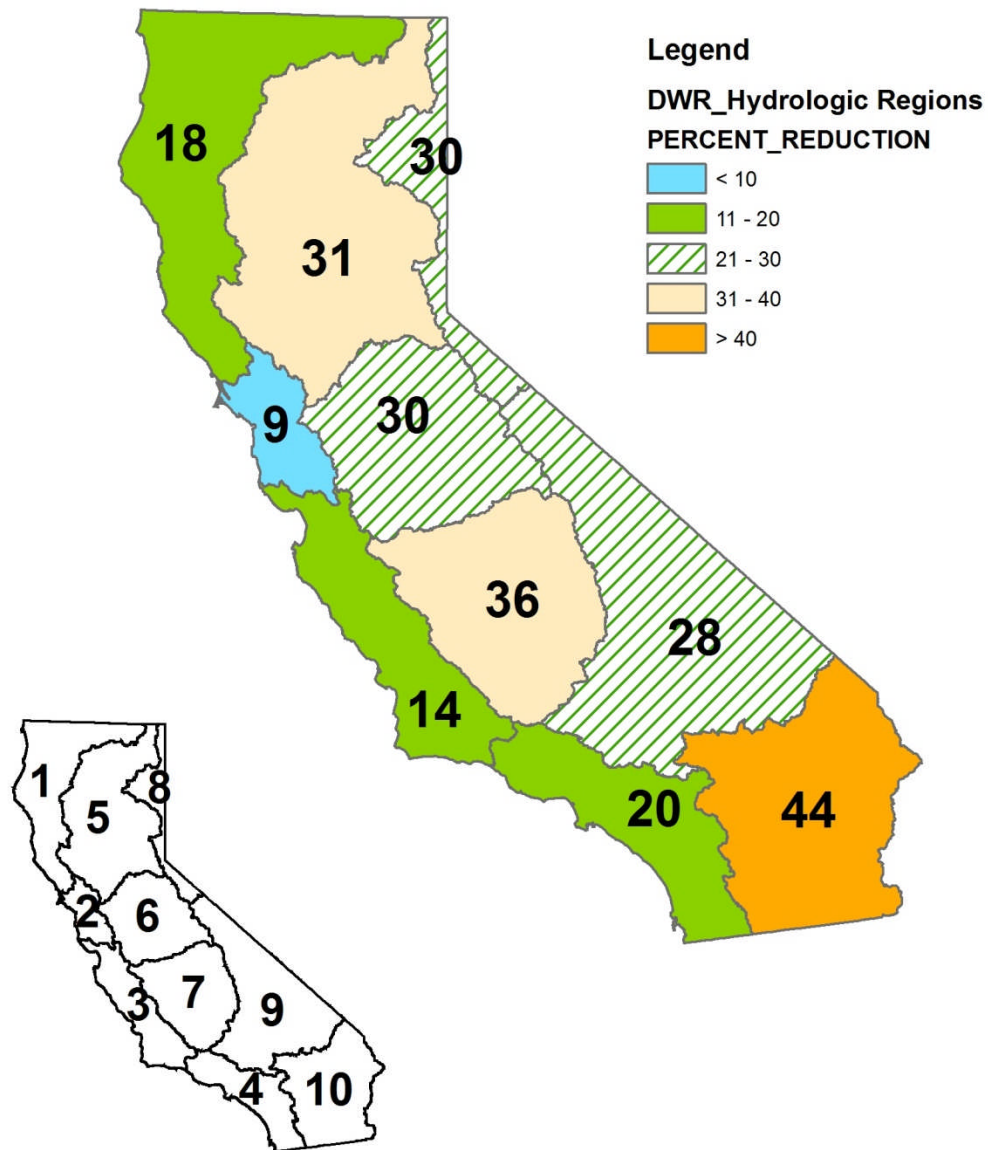
Proposed 2020 GPCD Targets



Proposed 2020 GPCD Targets



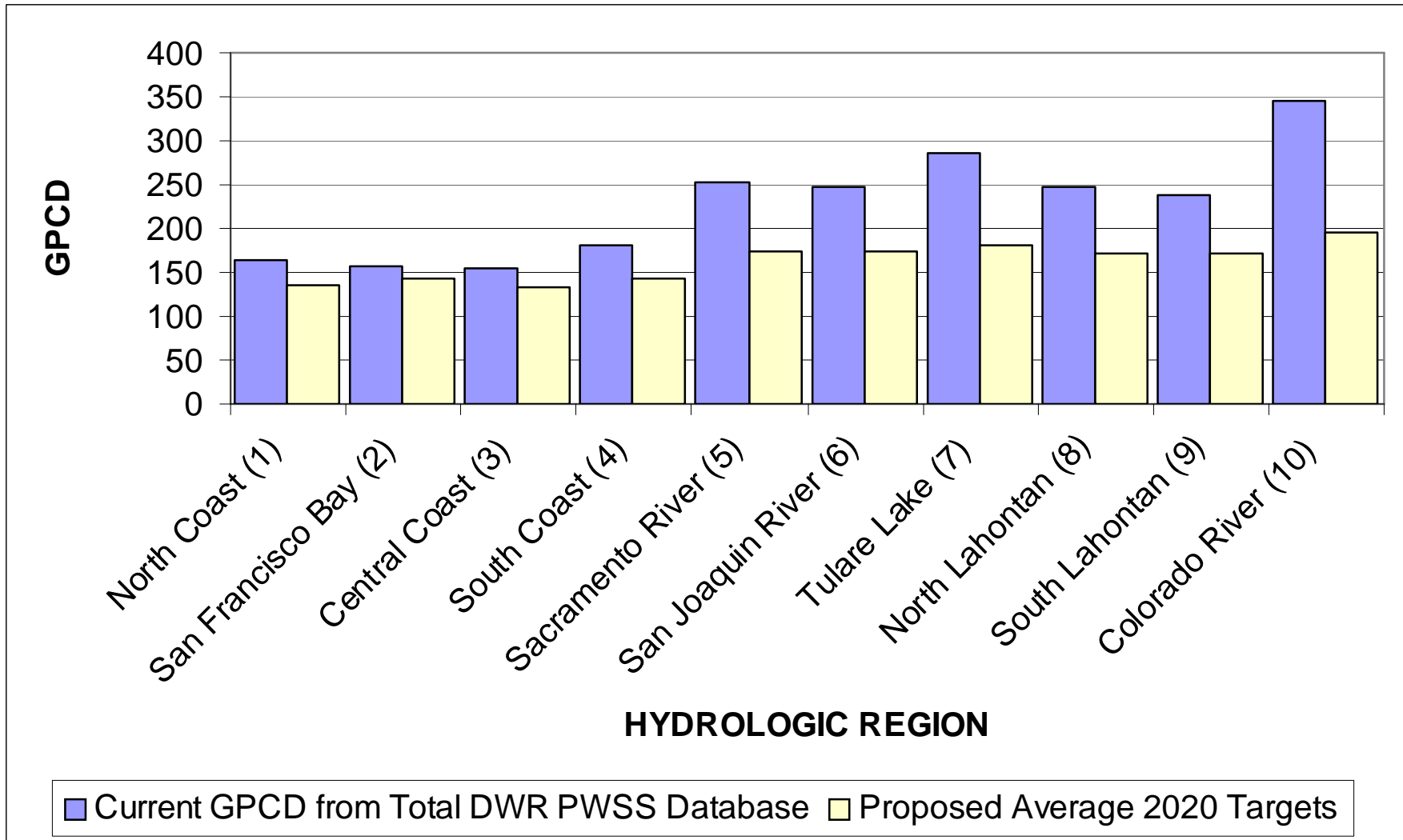
Proposed Targets (Percentage Reduction)



Proposed Targets

	HYDROLOGIC REGION									
	1	2	3	4	5	6	7	8	9	10
Current GPCD from Total DWR PWSS Database	165	157	154	180	253	248	285	248	237	346
Proposed 2015 Targets	150	150	144	162	214	211	233	210	204	270
Proposed Average 2020 Targets	135	143	133	144	175	173	181	173	171	194
Reduction % from Current to Proposed 2020 GPCD	18%	9%	14%	20%	31%	30%	36%	30%	28%	44%

Proposed Reduction in GPCD



Clarifications