

Figure 9



Source: Exh. BTB-9, p. 4

Figure 10

ARROWHEAD SPRING WATER THE JOURNEY FROM STRAWBERRY CANYON

THE WATER SYSTEM THAT SUPPLIES ARROWHEAD® BRAND 100% MOUNTAIN SPRING WATER IS A SMALL PART OF A LARGE WATERSHED IN SAN BERNARDINO COUNTY.

OUR OPERATIONS AT ARROWHEAD SPRINGS HAVE ALWAYS BEEN ONE PART OF A MUCH BIGGER SYSTEM, AND THE AMOUNT OF WATER WE COLLECT IS BASED ON WHAT FLOWS NATURALLY FROM THE SPRINGS - AND ONLY A PORTION OF THAT GETS BOTTLED.

During 2020, nearly 70 percent of the total amount of water we collected (59 million gallons) was returned to the watershed (approx. 40.8 million gallons). In keeping with a decades-old agreement, another portion of that water (approx. 11.8 million gallons) went to the Arrowhead Springs property owners. Only the remaining approx. 6.4 million gallons - or approx. 11 percent of the total water collected - went to one of our facilities for bottling.

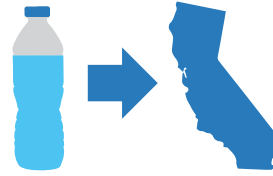
HOW IS YOUR WATER COLLECTED AND MEASURED?

Since we only collect spring water that flows naturally, and the water we collect is measured at the top of the mountain before it enters our pipeline, our collection amounts vary depending on how wet or dry it is in any given year.

WHERE DOES THE WATER GO AND HOW IS IT USED?

Spring water flows down the mountain through a four inch, stainless steel pipe to our water storage silo at the base of the mountain. Based on consumer demand, water is retrieved from the storage silo as our bottling facilities need it (6.4 million gallons in 2020).

When the silo fills up faster than water is needed for bottling, the excess water is returned back to nature (approx. 40.8 million gallons in 2020).

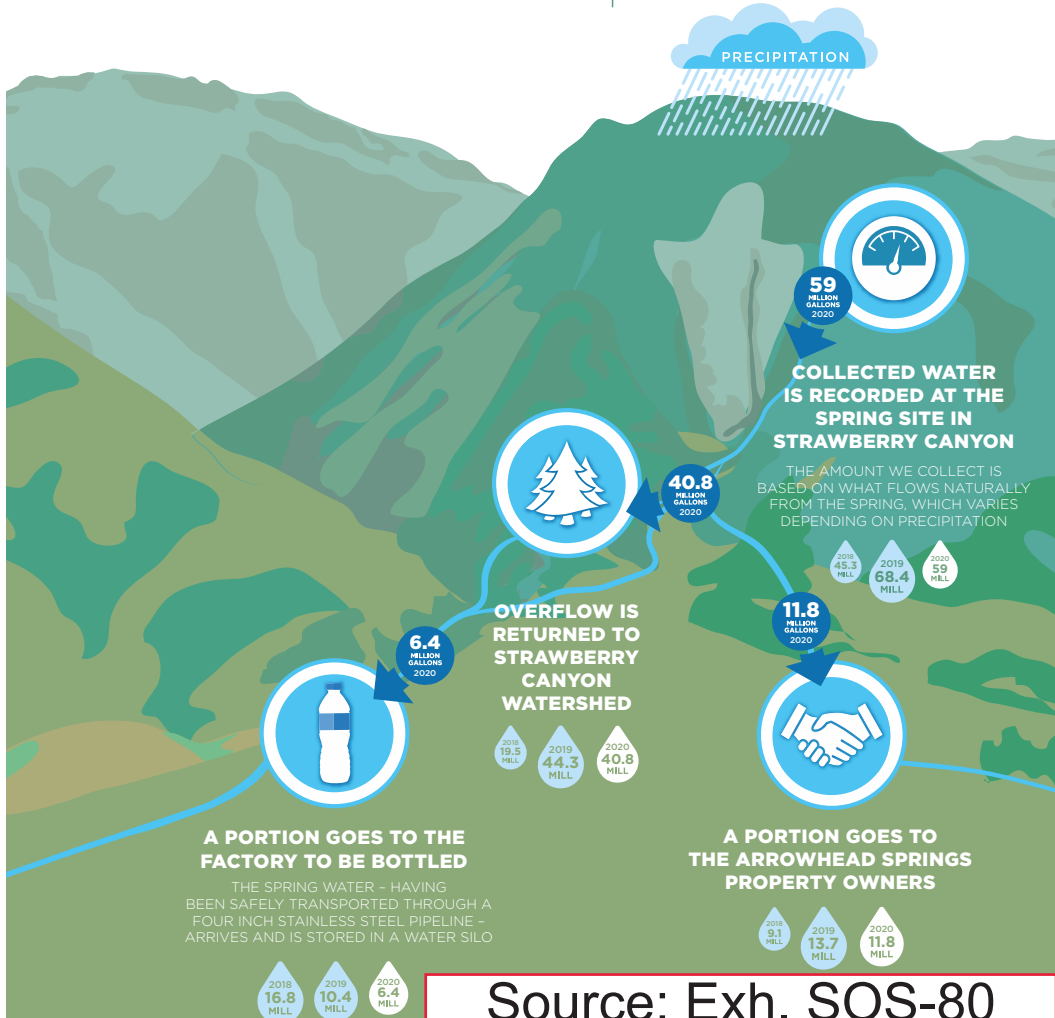


IN 2020, APPROXIMATELY **THREE-FOURTHS** OF OUR SPRING WATER SOURCED IN CALIFORNIA WAS DISTRIBUTED IN CALIFORNIA



ARROWHEAD® BRAND 100% MOUNTAIN SPRING WATER HAS BEEN RESPONSIBLY SOURCED IN THE SAN BERNARDINO MOUNTAINS FOR MORE THAN **125 YEARS**

STRAWBERRY CANYON
SAN BERNARDINO COUNTY



Source: Exh. SOS-80

Figure 11

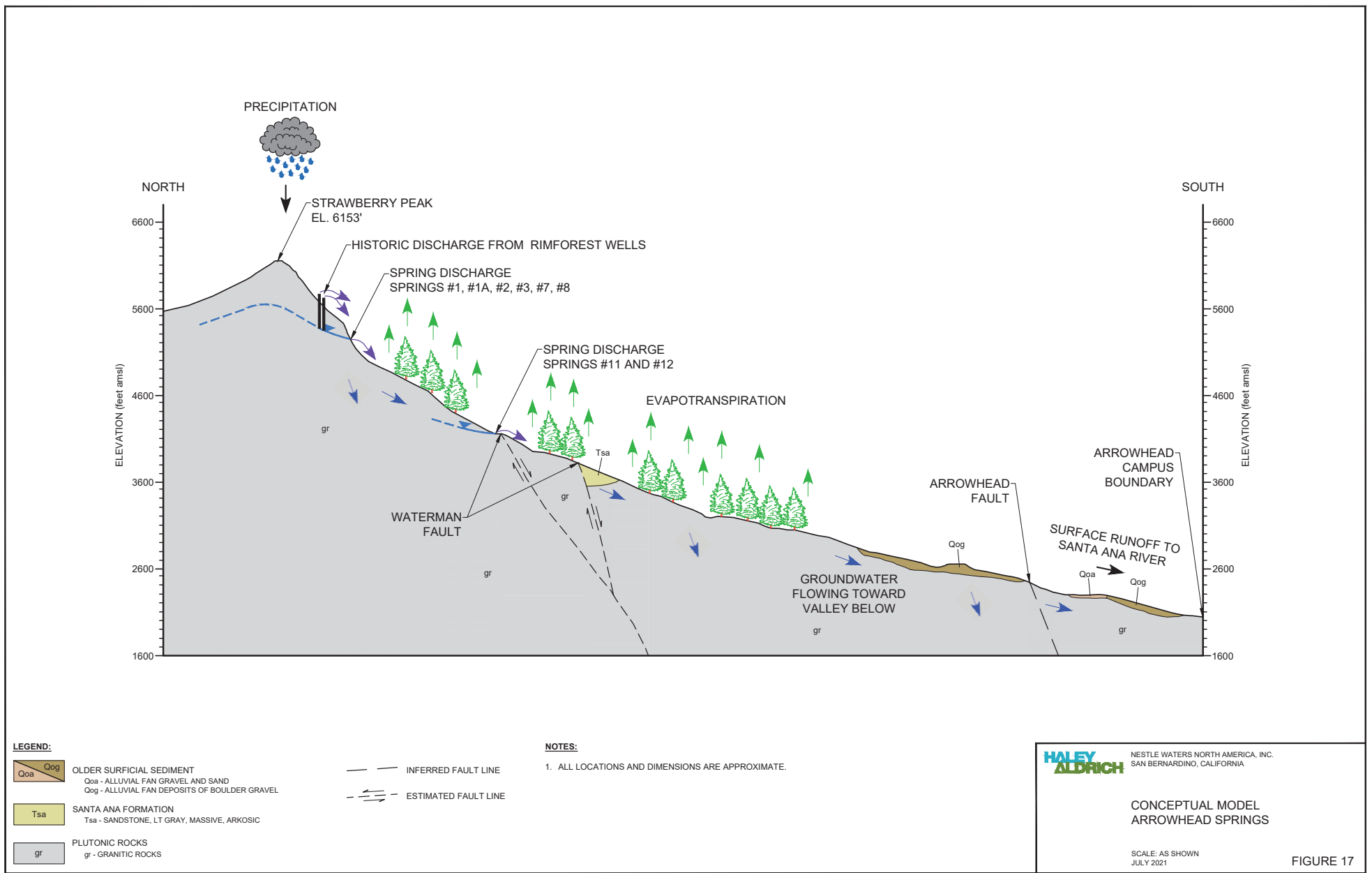


Figure 12

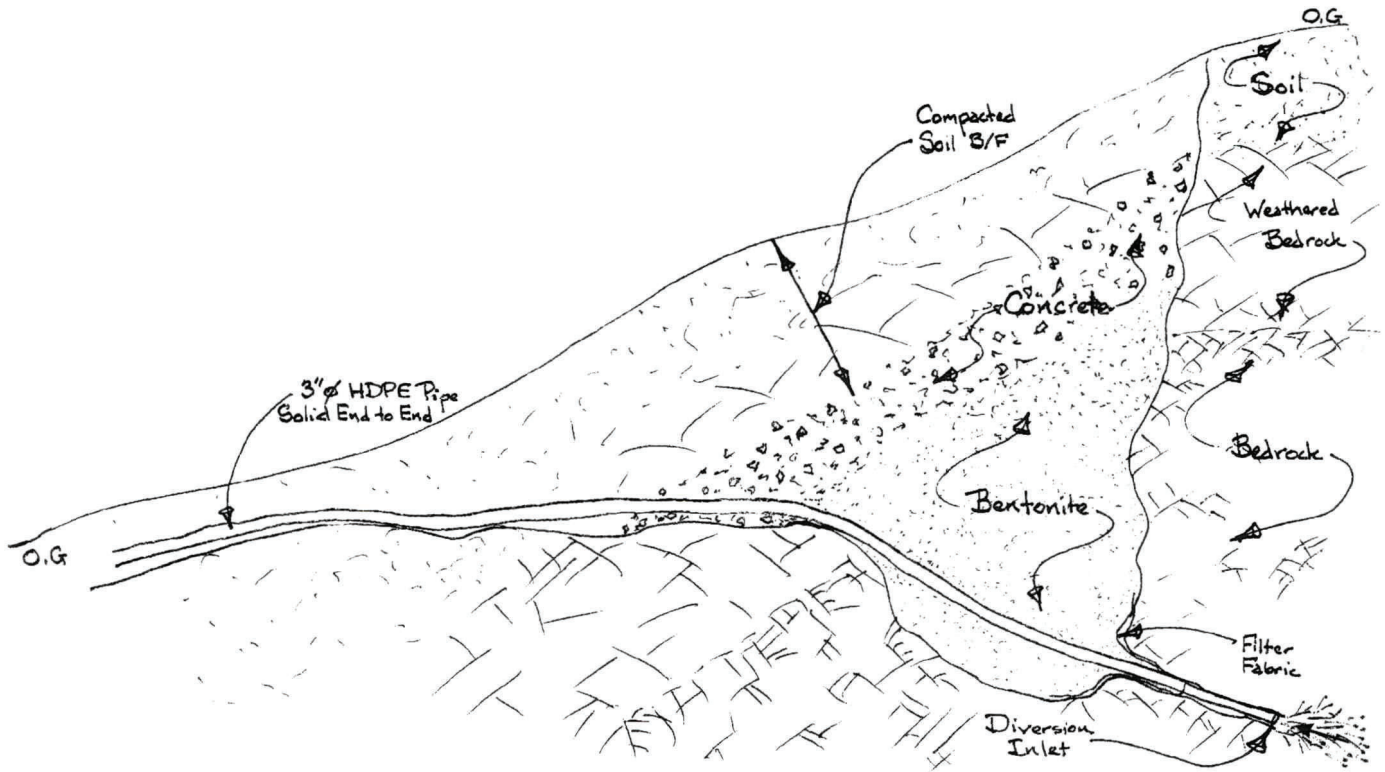
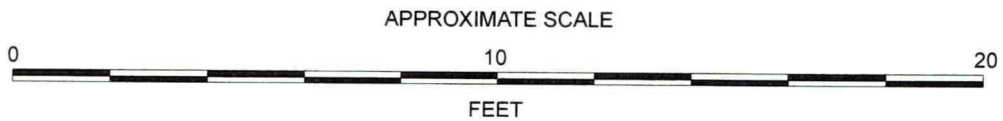
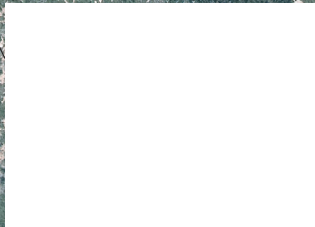
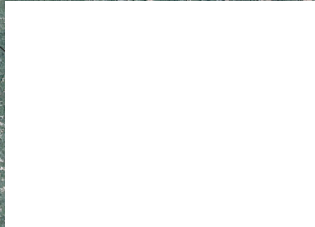
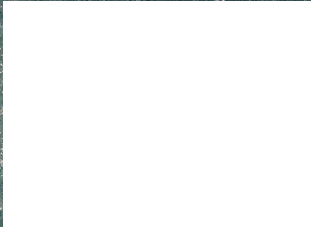
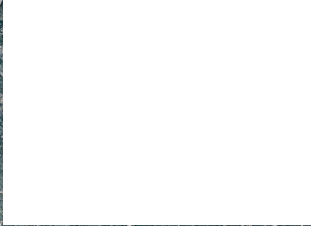
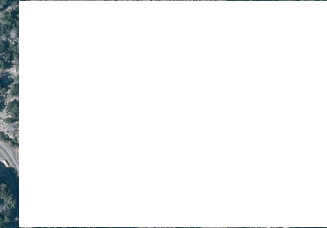
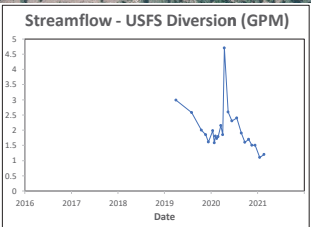
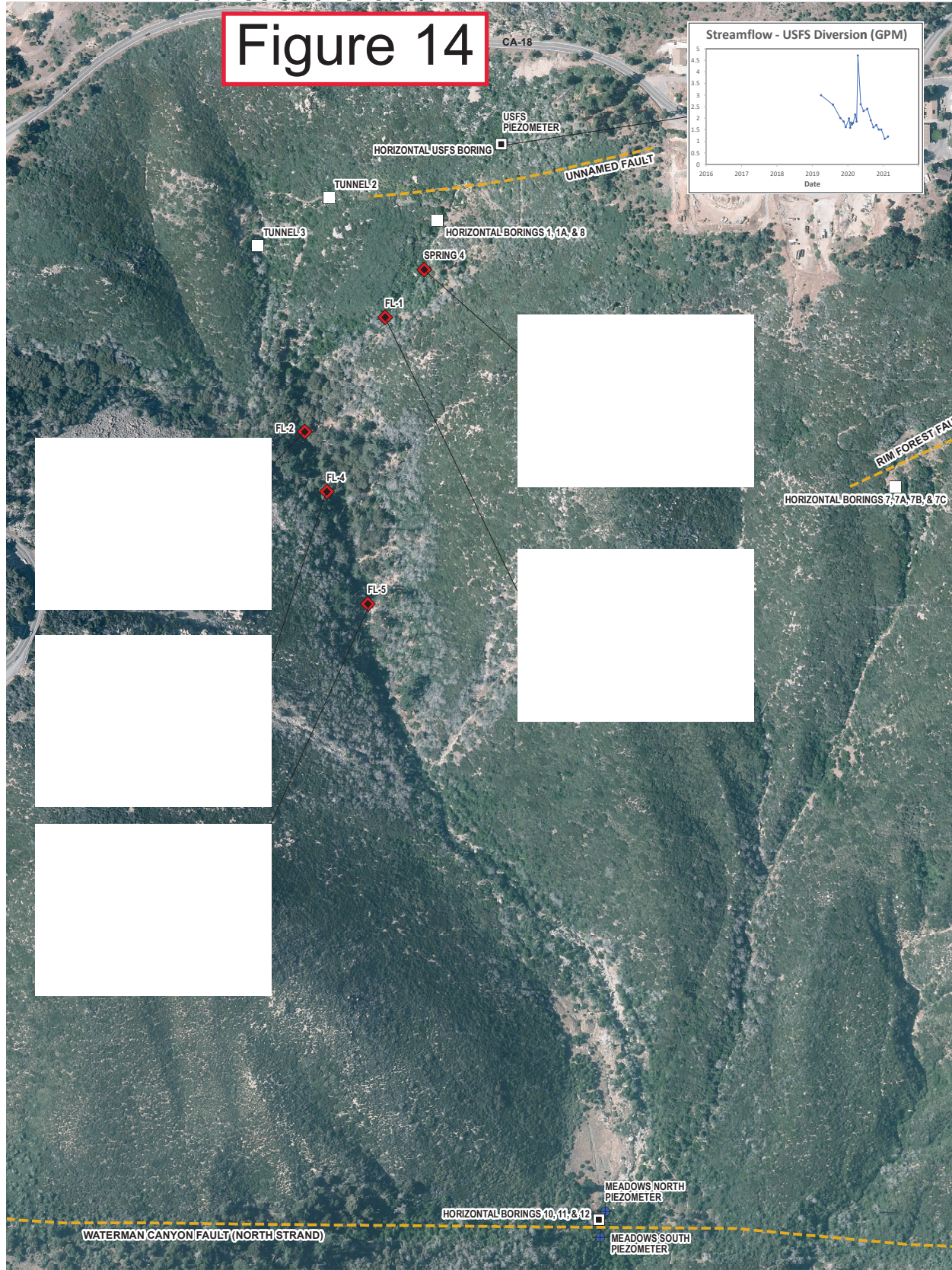


Figure 7. Diagrammatic Cross Section of Completion Details at Marco Spring Orifice



Source: Exh. BTB-40, p. 23

Figure 14



- Legend**
- DEVELOPED SPRING VAULT
 - SAMPLE TYPE**
 - CROSS-SECTION
 - ◆ FLOW
 - ◆ PIEZOMETER
 - POOL
 - - - APPROXIMATE FAULT TRACE

- NOTES**
1. ALL LOCATIONS AND DIMENSIONS ARE APPROXIMATE.
 2. GPM = GALLONS PER MINUTE
 3. DATA COLLECTION ENDS AT CONFLUENCE OF STRAWBERRY AND EAST STRAWBERRY CREEK.
 4. AERIAL IMAGERY SOURCE: ESRI



STRAWBERRY CANYON STREAM CONDITION INVENTORY
BLUETRITON BRANDS

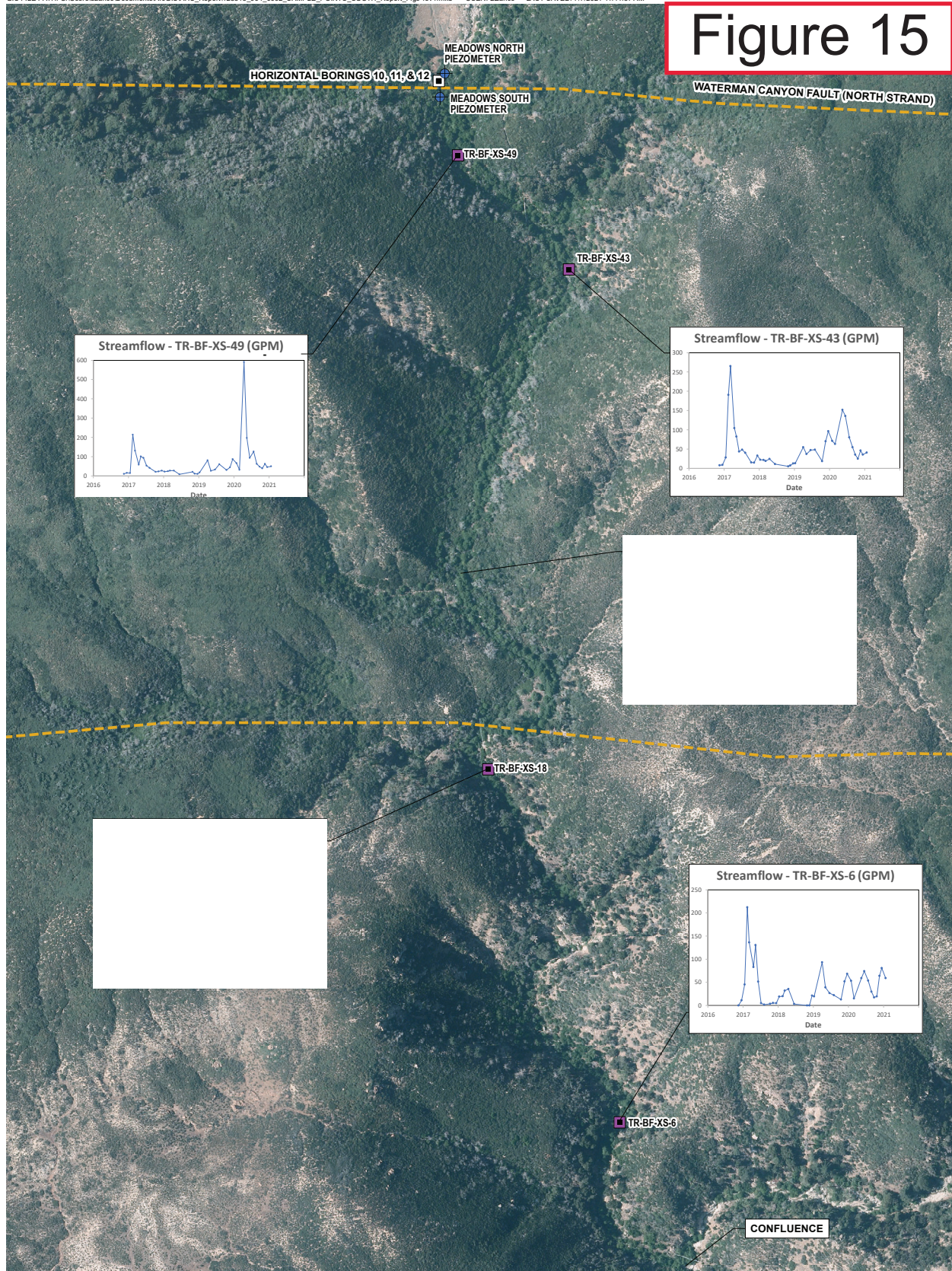
SURFACE FLOW MONITORING LOCATIONS - STRAWBERRY CREEK - NORTH AREA

JULY 2021

FIGURE 8

Source: Exh. BTB-7, p. 75

Figure 15



- LEGEND**
- CROSS-SECTION
 - FLOW
 - PIEZOMETER
 - POOL
 - DEVELOPED SPRING VAULT
 - APPROXIMATE FAULT TRACE

- NOTES**
1. ALL LOCATIONS AND DIMENSIONS ARE APPROXIMATE.
 2. GPM = GALLONS PER MINUTE
 3. DATA COLLECTION ENDS AT CONFLUENCE OF STRAWBERRY AND EAST STRAWBERRY CREEK.
 4. AERIAL IMAGERY SOURCE: ESRI



HALEY ALDRICH
 STRAWBERRY CANYON STREAM CONDITION INVENTORY
 BLUETRITON BRANDS

SURFACE FLOW MONITORING LOCATIONS - STRAWBERRY CREEK - SOUTH AREA
 JULY 2021 FIGURE 9

Source: Exh. BTB-7, p. 76

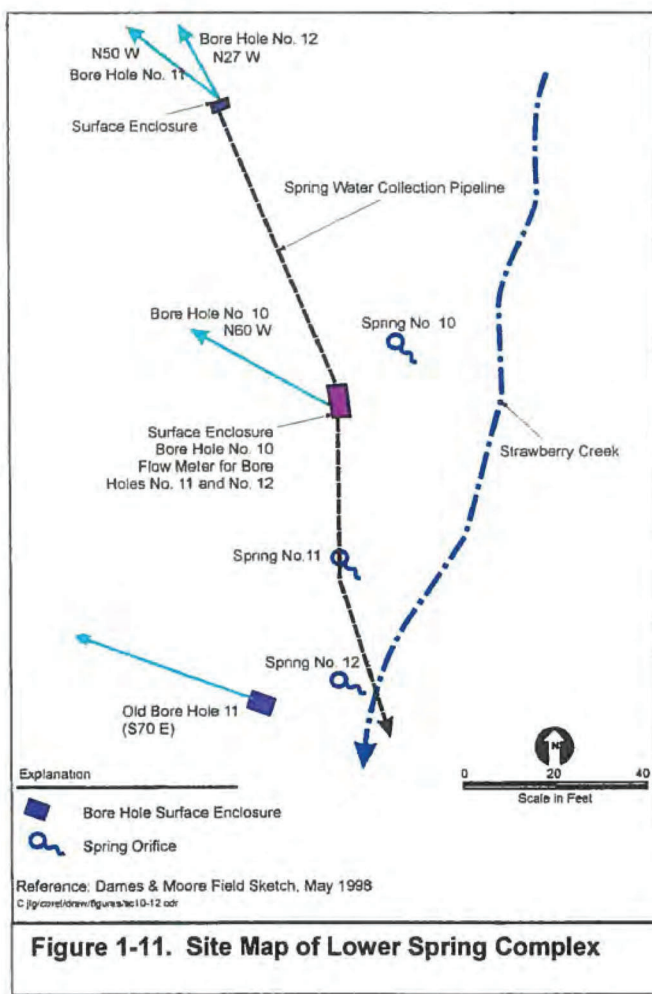
Figure 16

replaced by the current group of bore holes located near Spring No. 7. The locations of the four currently used horizontal bore holes are shown on Figure 1-9.

The bore holes are constructed of schedule 40 galvanized steel casing and schedule 40 galvanized steel screen at the end of each casing. Bore Holes No. 7, No. 7A, No. 7B, and No. 7C are protected inside a single concrete block enclosure shown in Figure 1-10.



Figure 1-10. Bore Hole Enclosure at Spring No. 7



Access to the surface piping connected to these bore holes is provided through a locking steel door. Bore Hole No. 7 is about 290 feet long, and is oriented N23°E. Bore Hole No. 7A is approximately 230 feet long, and is oriented N19°W. Bore Hole No. 7B is approximately 397 feet long, and is oriented N37°E. Bore Hole No. 7C is approximately 300 feet long, and is oriented N50°W. A sampling port and totalizing flow meter are connected to the bore hole pipes where they extend to the surface. From the enclosure, water flows from the totalizing flow meter, through above-ground, ductile iron pipe to the storage tanks located above the loading station. Pertinent data for the bore are presented in Table 1-2.

Source: Exh. PT-23, p. 19

Table 1

**BlueTriton Brands, Inc. -- Nestle Waters North America, Inc. -- Arrowhead and Puritas Waters, Inc.
Reported Annual Extractions**

(reported annual extraction amounts in acre-feet)

	G360476	G360477	G360478	G360479	G360480	G360481	G360482	G361986	G362800	G362856	G362857	G362894	Total Reported Diversions
Source Year	Spring No. 1	Spring No. 2	Spring No. 3	Spring No. 7	Spring No. 7A	Spring No. 7B	Spring No. 8	Spring # 7C	Spring # 10	Spring # 12	Spring # 7	Spring # 11	
1947	0.00	112.06	24.65	41.46	NR	NR	NR	NR	NR	NR	NR	NR	178.17
1948	3.39	82.02	11.24	26.97	NR	NR	NR	NR	NR	NR	NR	NR	123.62
1949	13.45	100.85	19.05	29.13	NR	NR	NR	NR	NR	NR	NR	NR	162.48
1950	12.33	88.52	14.57	18.87	7.52	9.39	8.24	NR	NR	NR	NR	NR	159.44
1951	5.60	49.30	7.84	NR	13.45	16.81	16.81	NR	NR	NR	NR	NR	109.81
1952	17.93	107.57	48.18	NR	26.89	32.50	56.03	NR	NR	NR	NR	NR	289.10
1953	7.87	64.05	8.99	NR	21.35	22.47	26.97	NR	NR	NR	NR	NR	151.69
1954	8.96	72.84	20.17	NR	21.29	23.53	38.10	NR	NR	NR	NR	NR	184.89
1955	7.84	64.99	15.69	NR	19.05	21.26	34.74	NR	NR	NR	NR	NR	163.57
1956	5.60	49.30	12.33	NR	15.69	17.93	33.62	NR	NR	NR	NR	NR	134.47
1957	5.48	62.05	14.68	0.00	15.91	17.84	34.74	NR	NR	NR	NR	NR	150.70
1958	7.65	89.03	28.26	NR	36.27	36.55	51.38	NR	NR	NR	NR	NR	249.13
1959	5.28	57.51	18.81	NR	27.32	22.53	31.59	NR	NR	NR	NR	NR	163.04
1960	3.62	43.39	11.63	NR	19.25	12.62	18.41	NR	NR	NR	NR	NR	108.91
1961	1.96	29.96	8.86	NR	3.75	3.82	10.23	27.02	NR	NR	NR	NR	85.59
1962	1.20	49.02	16.40	NR	7.21	6.39	6.69	6.82	NR	NR	NR	NR	93.73
1963	1.52	34.38	9.88	NR	0.91	2.68	5.74	32.23	NR	NR	NR	NR	87.34
1964	0.59	32.88	8.90	NR	0.00	0.00	14.69	20.82	NR	NR	NR	NR	77.88
1965	1.08	58.33	30.71	NR	8.03	7.15	36.60	7.57	NR	NR	NR	NR	149.46
1966	0.69	77.72	36.44	NR	35.77	10.46	88.66	0.00	NR	NR	NR	NR	249.75
1967	0.04	83.62	55.01	NR	49.69	0.00	67.23	0.00	NR	NR	NR	NR	255.59
1968	0	67.76	15.72	NR	49.88	0.00	80.88	NR	NR	NR	NR	NR	214.24
1969	0	132.96	82.14	NR	56.27	0.00	90.78	NR	NR	NR	NR	NR	362.15
1970	0	75.06	15.03	NR	33.04	9.70	64.65	NR	NR	NR	NR	NR	197.48
1971	0	62.72	14.22	NR	0.00	9.31	40.80	28.06	NR	NR	NR	NR	155.11
1972	0	51.34	14.52	NR	0.00	0.00	20.98	36.16	NR	NR	NR	NR	123.00
1973	0	80.28	23.78	NR	26.24	13.75	11.51	3.72	NR	NR	NR	NR	159.28
1974	0	74.77	20.80	NR	15.40	15.60	18.90	0.00	NR	NR	NR	NR	145.47
1975	0	72.05	18.39	NR	15.80	15.90	14.40	7.42	NR	NR	NR	NR	143.96
1976	9.37	64.48	11.37	NR	0.00	1.72	28.47	20.57	NR	NR	NR	NR	135.98
1977	20.52	56.58	9.40	NR	0.00	0.00	33.85	20.68	NR	NR	NR	NR	141.03
1978	0	89.92	37.60	NR	27.04	0.00	2.00	14.08	NR	NR	NR	NR	170.64
1979	0	101.24	21.16	NR	19.81	0.00	24.48	21.46	NR	NR	NR	NR	188.15
1980	0	112.70	48.40	NR	1.20	2.00	15.10	3.30	NR	NR	NR	NR	182.70
1981	10.02	84.16	15.01	NR	4.06	18.00	26.10	30.00	NR	NR	NR	NR	187.35
1982	13.60	58.90	25.40	NR	6.60	10.70	23.30	28.20	22.30	NR	NR	NR	189.00
1983	0.00	99.60	96.20	NR	44.90	1.30	11.70	4.40	6.60	NR	NR	NR	264.70
1984	25.90	78.40	24.60	NR	24.60	NR	29.10	44.20	15.30	NR	NR	NR	242.10
1985	28.09	62.30	18.88	NR	NR	NR	18.65	13.48	37.11	NR	NR	NR	178.51
1986	20.03	64.23	28.78	NR	NR	NR	NR	NR	38.91	29.93	22.56	NR	204.44
1987	18.18	55.21	14.87	NR	6.87	6.27	10.00	46.16	40.62	9.39	1.24	1.68	210.49
1988	19.64	63.70	18.34	NR	0.00	0.00	9.18	51.46	36.08	2.94	0.00	1.61	202.95
1989	NR	NR	NR	NR	NR	NR	NR	NR	NR	NR	NR	NR	0.00
1990	14.48	48.72	13.43	NR	0.00	0.00	5.80	36.08	24.88	0.00	0.00	0.00	143.39
1991	16.19	49.03	16.51	NR	0.00	0.00	10.24	37.89	25.43	5.33	0.00	0.99	161.61
1992	26.90	76.00	42.30	NR	6.60	2.80	27.50	32.90	31.30	6.90	6.10	1.30	260.60
1993	37.70	120.30	80.90	NR	36.00	24.10	19.70	13.40	31.30	6.90	36.80	1.30	408.40
1994	52.30	61.20	17.70	NR	29.10	17.20	59.70	18.30	13.70	10.00	33.60	10.00	322.80
1995	38.60	76.50	36.60	NR	24.00	17.90	55.30	23.90	12.20	10.00	28.10	10.00	333.10
1996	55.80	66.60	29.70	NR	26.30	16.80	54.30	17.60	12.00	10.00	28.80	10.00	327.90
1997	70.42	84.90	48.20	NR	43.10	27.10	69.80	27.50	18.00	10.00	49.00	10.00	458.02
1998	98.20	79.52	49.46	NR	51.79	32.48	66.52	37.86	12.12	10.00	57.52	10.00	505.47
1999	39.23	47.54	19.43	NR	23.06	13.95	50.60	8.75	20.99	10.00	37.53	10.00	281.08
2000	24.10	38.50	14.11	NR	10.00	10.00	36.42	10.00	21.05	NR	18.06	10.00	192.24
2001	21.00	35.20	15.20	NR	1.00	7.00	35.00	1.00	13.30	2.00	31.60	4.00	166.30
2002	56.00	66.60	29.70	NR	26.30	16.80	54.30	17.60	12.00	10.00	28.80	10.00	328.10
2003	56.00	66.60	29.70	NR	26.30	16.80	54.30	17.60	12.00	10.00	28.80	10.00	328.10
2004	1	1.27	0.55	NR	1.14	0.01	0.26	0.05	1.27	0.48	0.68	0.68	7.15
2005	20.6	34.40	14.90	NR	30.80	0.30	7.00	1.40	34.40	13.00	18.40	18.40	193.60
2006	16.8	28.12	12.18	NR	25.17	0.25	5.72	1.14	28.12	10.62	15.04	15.04	158.24
2007	13.7	22.91	9.93	NR	20.52	0.20	4.66	0.93	22.91	8.66	12.26	12.26	128.96
2008	11.7	19.55	8.47	NR	17.50	0.17	3.98	0.80	19.55	7.39	10.45	10.45	110.01
2009	11.2	18.65	8.08	NR	16.70	0.16	3.79	0.76	18.65	7.05	9.97	9.97	104.95
2010	22.0	37.00	16.00	NR	33.00	1.00	8.00	2.00	37.00	14.00	20.00	20.00	210.00
2011	21.0	36.00	15.00	NR	32.00	1.00	7.00	1.00	36.00	14.00	19.00	19.00	201.00
2012	28.0	47.00	21.00	NR	42.00	1.00	10.00	2.00	47.00	18.00	25.00	25.00	266.00
2013	17.0	28.00	12.00	0.00	25.00	1.00	6.00	1.00	28.00	10.00	15.00	15.00	158.00
2014	9.0	15.00	7.00	0.00	14.00	1.00	3.00	1.00	15.00	6.00	8.00	8.00	87.00
2015	9.0	27.00	12.00	0.00	12.00	4.00	16.00	1.00	21.00	3.00	6.00	1.00	112.00
2016	4.5	25.51	11.32	NR	9.68	2.30	14.76	0.10	19.86	2.11	8.81	0.12	99.07
2017	15.00	26.00	11.00	0.00	23.00	1.00	5.00	0.00	34.00	15.00	14.00	0.00	144.00
2018	22.00	29.00	14.00	NR	9.00	5.00	22.00	1.00	23.00	1.00	15.00	0.00	141.00
2019	15.00	68.00	52.00	NR	9.00	2.00	1.00	1.00	32.00	11.00	15.00	5.00	211.00
2020	4.00	47.00	27.00	NR	21.00	9.00	5.00	0.00	30.00	8.00	29.00	0.00	180.00

Note: For G360480, G360481, G361986, and G362894, the reported amounts for the year 2000 were "less than 10 acre-feet".

"NR" means no report is on file for the listed notice and year.
Source: notices in Groundwater Extraction Notices folder in administrative record.