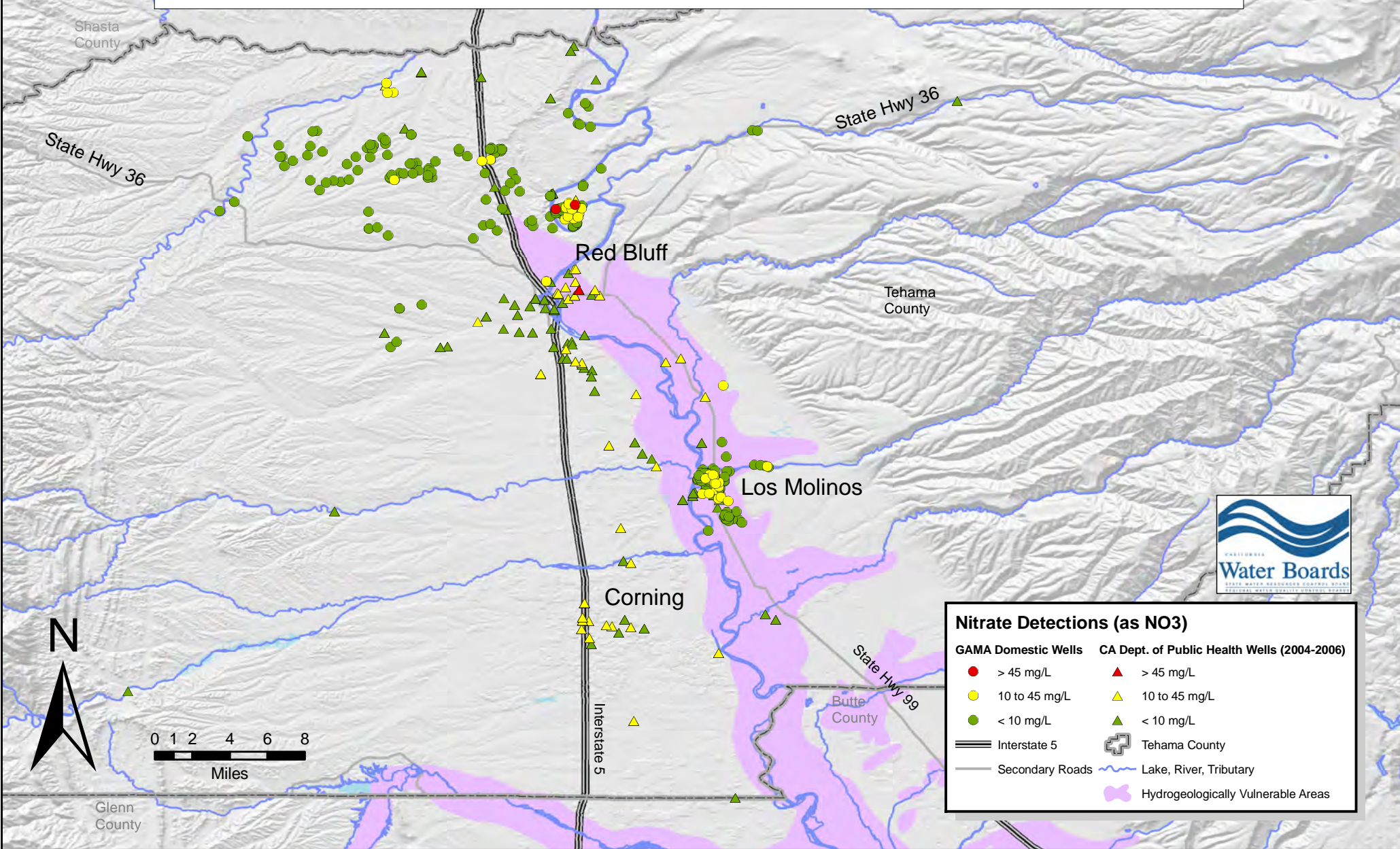
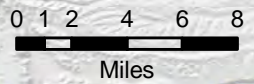


Groundwater Ambient Monitoring and Assessment (GAMA) Domestic Well Project Tehama County Focus Area, 2005 Nitrate in Domestic and Public Wells



Nitrate Detections (as NO ₃)	
GAMA Domestic Wells	CA Dept. of Public Health Wells (2004-2006)
● > 45 mg/L	▲ > 45 mg/L
● 10 to 45 mg/L	▲ 10 to 45 mg/L
● < 10 mg/L	▲ < 10 mg/L
Interstate 5	Tehama County
Secondary Roads	Lake, River, Tributary
	Hydrogeologically Vulnerable Areas



Glenn County

Shasta County

State Hwy 36

State Hwy 36

Red Bluff

Tehama County

Los Molinos

Corning

Interstate 5

State Hwy 99

Butte County