

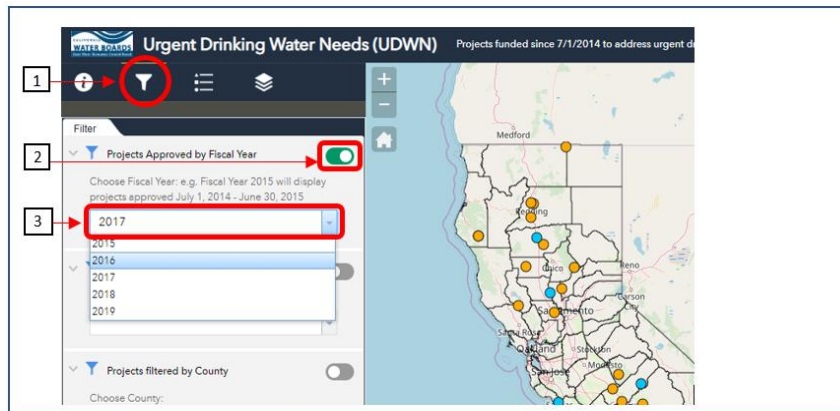
How to query and export data using the Urgent Drinking Water Needs map:

Pre-set filters have been created for the following Attributes:

Approval Date	Projects approved in Fiscal Years since July 1, 2014
Activity Status	Projects Active vs. Completed
Funding Program	All Projects filtered by funding source
Assembly District	All Projects filtered by Assembly District
Senate District	All Projects funded by Senate District
County	All Projects funded by County

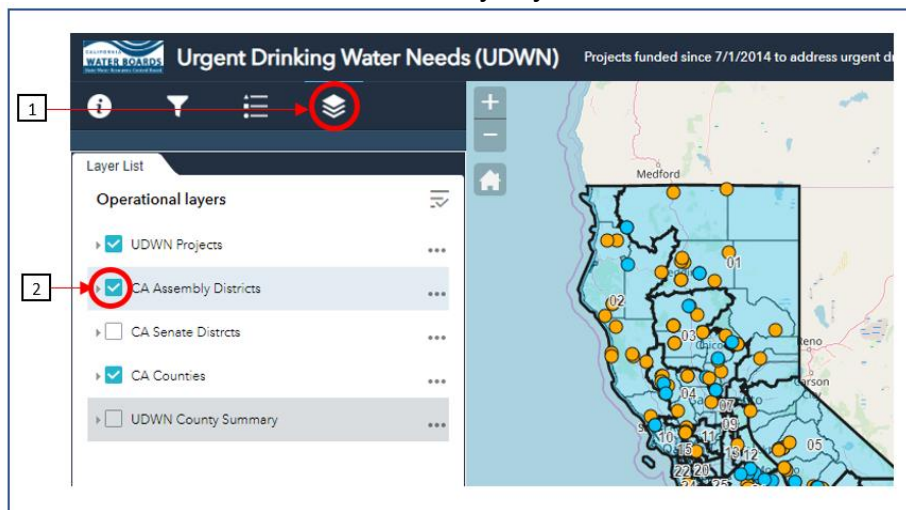
To use pre-set filters:

1. Click on the filter icon
2. Click toggle next to desired filter to enable it.
3. Choose desired filter



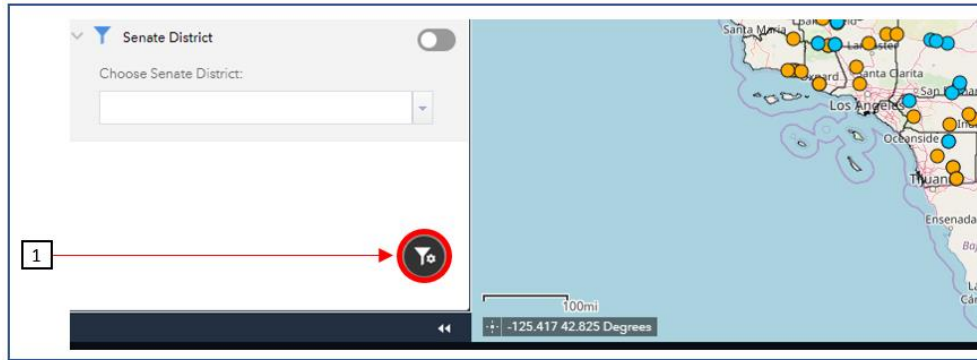
To enable the California Assembly, Senate District, or County Summary Layer:

1. Click on the Layer icon
2. Click the check mark next to the layer you would like to view.



To create custom filters:

1. Click the filter icon at the bottom of the preset filter menu



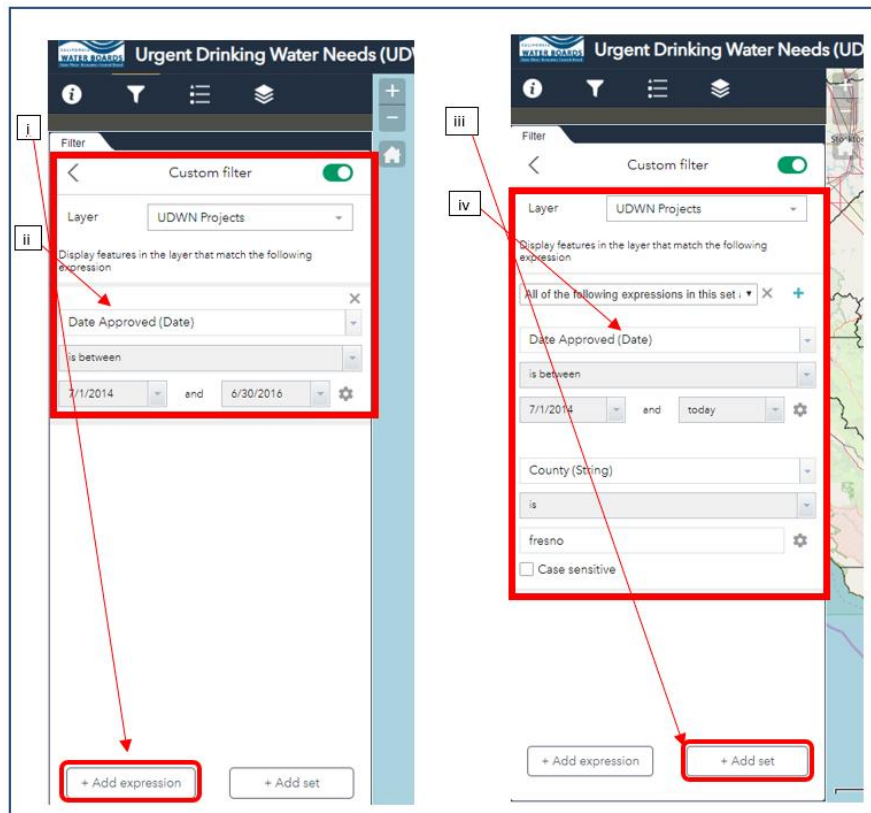
2. Enter desired parameters.

For one parameter:

- i) Click "Add Expression" to create a custom filter.
- ii) *For example: All Urgent Drinking Water Needs Projects approved between July 1, 2014 and June 30, 2016.*

For more than one parameter:

- iii) Click "Add Set" to create a custom filter
- iv) *For example: All Urgent Drinking Water Needs Projects approved since July 1, 2014 in Fresno County.*



To export and download filtered Data:

1. Open the Attribute Table located at the bottom of the map
2. click the “options” drop down menu
3. Select “export all to CSV”.

