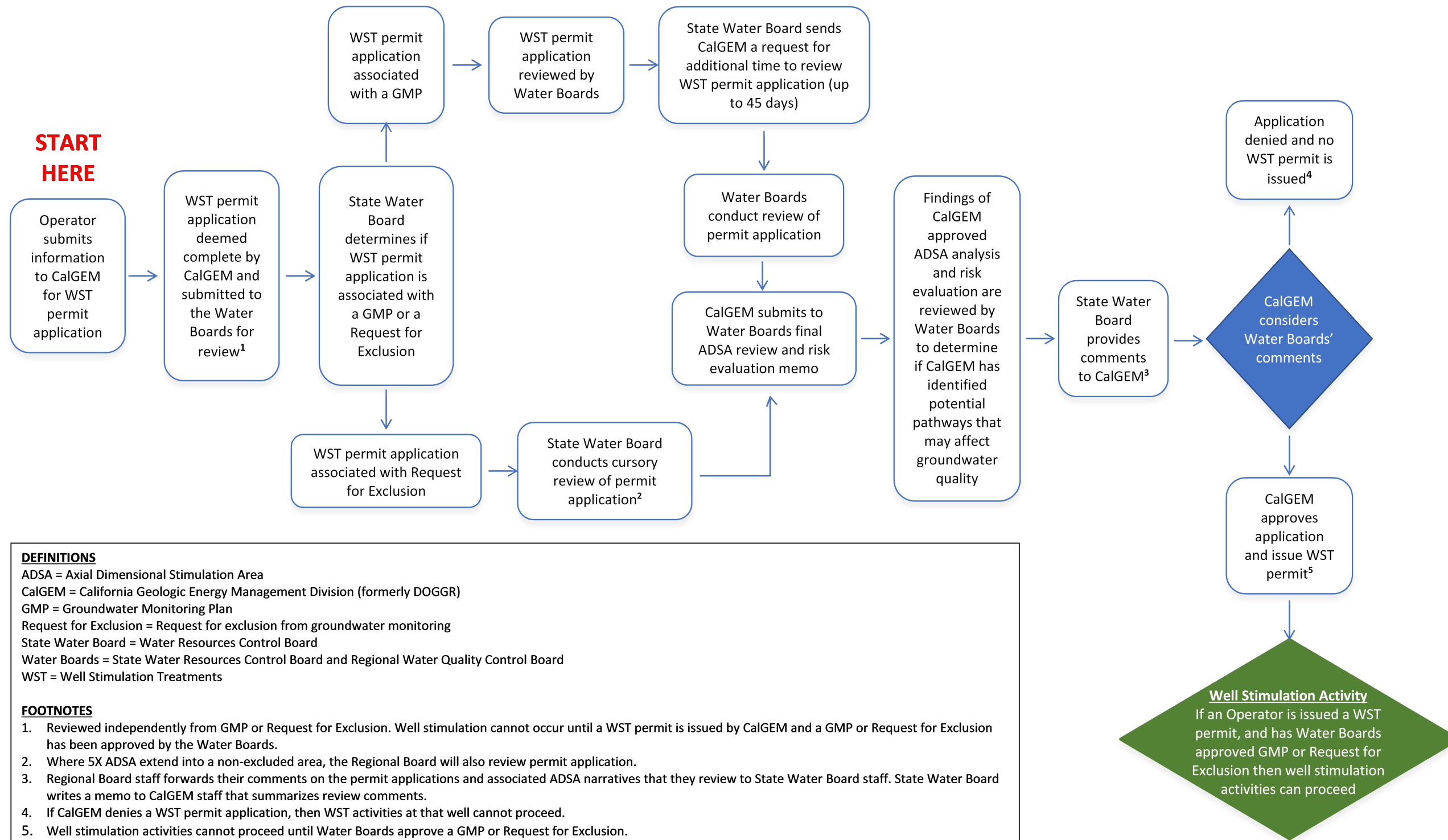


**Flowchart C-3. Process Flowchart for Reviewing  
Well Stimulation Permit Applications**  
State Water Resources Control Board  
Oil and Gas Monitoring Unit



**DEFINITIONS**  
 ADSA = Axial Dimensional Stimulation Area  
 CalGEM = California Geologic Energy Management Division (formerly DOGGR)  
 GMP = Groundwater Monitoring Plan  
 Request for Exclusion = Request for exclusion from groundwater monitoring  
 State Water Board = Water Resources Control Board  
 Water Boards = State Water Resources Control Board and Regional Water Quality Control Board  
 WST = Well Stimulation Treatments

**FOOTNOTES**  
 1. Reviewed independently from GMP or Request for Exclusion. Well stimulation cannot occur until a WST permit is issued by CalGEM and a GMP or Request for Exclusion has been approved by the Water Boards.  
 2. Where 5X ADSA extend into a non-excluded area, the Regional Board will also review permit application.  
 3. Regional Board staff forwards their comments on the permit applications and associated ADSA narratives that they review to State Water Board staff. State Water Board writes a memo to CalGEM staff that summarizes review comments.  
 4. If CalGEM denies a WST permit application, then WST activities at that well cannot proceed.  
 5. Well stimulation activities cannot proceed until Water Boards approve a GMP or Request for Exclusion.