

1. **Annual Report**

a. Executive Summary

Placer Mosquito & Vector Control District (District) complied with the applicable components of the General NPDES Permit for Biological and Residual Pesticide Discharges from Vector Control Applications (General Permit). The District is a member of the MVCAC NPDES Permit Coalition and the Coalition conducted all required chemical and physical monitoring. The results of the Coalition's monitoring will be included in the Coalition Annual Report that will be sent separately to the SWRCB and Regional Boards.

The District made 865 applications to waters of the U.S. during the 2012 calendar year. The log of these applications can be found in Attachment B. The District performed Visual Monitoring of >10% of individual application sites identified as "Waters of the US" until July 2012. The visual monitoring completed by the District in the first half of the year found that there is no observable change in water quality between the background, event, and post event time periods-see monitoring log sheets. The SWRCB notified the permit holders in a letter to MVCAC dated July 13, 2012 that because the visual monitoring requirements were "interfering with the need for maximal efficient application to adequately protect human health from vector-borne diseases like West Nile Virus," that the visual monitoring was no longer required by individual Districts. The District continued to follow the guidelines of its Pesticide Application Plan (PAP).

b. Summary of Monitoring Data

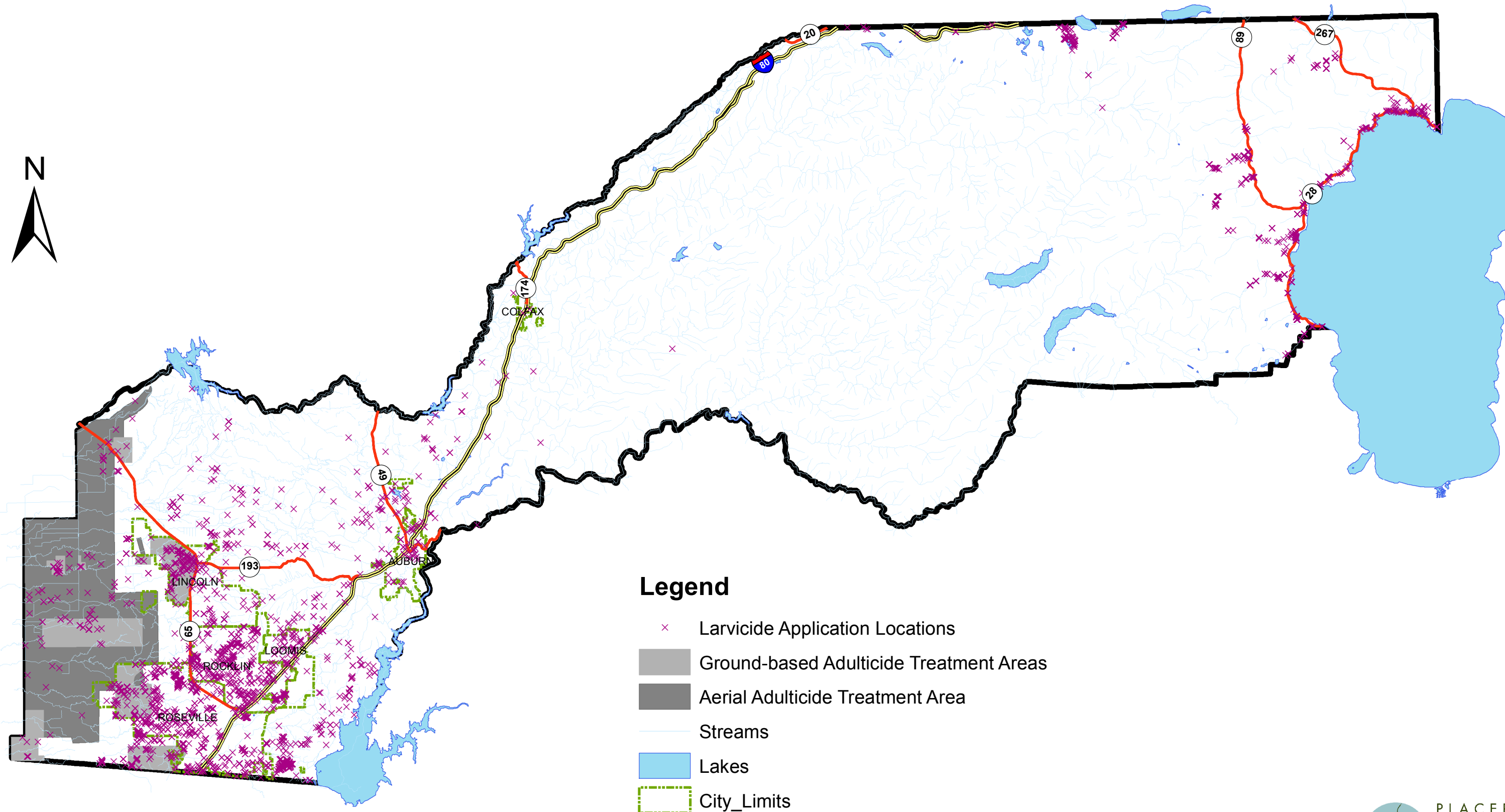
The District began the year by complying with the visual monitoring requirements of the permit. See Footnote 1 of Tables C-1 and C-2 in Amended Water Quality Control Order No. 2011-0002-DWQ, General Permit No. CAG990004. These requirements required a tremendous amount of time to monitor including a number of revisits to specific sites to gather the necessary information. Most critically, time spent revisiting old sites caused delay in getting to new sites. Given the short lifecycle of the mosquito, this greatly exacerbated the task of looking for and treating mosquito breeding sites early in their lifecycle when treatment is more concentrated and effective. Recognizing the need of mosquito control districts to quickly find and treat mosquito breeding sites to prevent the spread of disease, such as West Nile virus, the SWRCB issued a letter to MVCAC dated July 13, 2012 that indicated the visual monitoring requirement would no longer be required of individual Districts.

Per the instructions in the letter, the Coalition will provide information on the incidence of West Nile Virus and other similar public health threats in the Coalition's annual report.

For the reasons stated above, the District will no longer be collecting visual monitoring data.

- c. BMP Identification
BMP's utilized by the District are outlined in the District's PAP. These include; emphasis on reducing mosquito breeding habitat through non-chemical means, training employees to prevent spills and applying appropriate amount of chemical in each treatment area, calibrate application equipment and use a biology based assessment for determining treatment thresholds.
 - d. Violation Discussion
No violations of the General Permit by the District were observed.
 - e. Map of Applications
See Attachment A
 - f. Log of Applications made to Waters of the U.S.
Attachment B includes monthly reports of all application data on the covered application areas. Attachment D includes additional information regarding applications that affected more than one Waters of the U.S.
 - g. General Information on Applications
Attachment B includes information on dosage, concentration and quantity of each pesticide used which are derived from the individual pesticide labels.
 - h. Visual Monitoring Data
Visual Monitoring Data has been submitted to the State Water Board in the provided Monitoring Database Form -Attachment C.
 - i. BMP, PAP, Monitoring Program Recommendations
No recommendations are being proposed to improve the current BMP's, PAP, or monitoring plan. Any changes to the Coalition Monitoring Plan will be highlighted in the Coalition Monitoring Annual Report.
 - j. Pesticide Application Log made to Waters of the U.S.
A representation of the pesticide application log is contained in Attachment B
2. **Updated PAP Components**
N/A
 3. **Self Monitoring Reports**
N/A
 4. **Monitoring Reports**
The Coalition Monitoring Annual Report will summarize all physical measurements and chemical monitoring done for 2011 and 2012.

Attachment A: NPDES Vector Control Application Map - 2012



Legend

- × Larvicide Application Locations
- Ground-based Adulticide Treatment Areas
- Aerial Adulticide Treatment Area
- Streams
- Lakes
- City_Limits

0 2 4 8 Miles

Date of Application	Applicator Name	Application Location	Product Name
5/8/2012	Ortiz-Rodriguez, Everardo	#440 (38.824600 -121.257110)	Vectobac BTI-G
3/29/2012	Ortiz-Rodriguez, Everardo	#441 (38.820928 -121.281338)	Vectobac BTI-G
11/27/2012	Ortiz-Rodriguez, Everardo	#442 (38.809471 -121.212099)	Vectobac BTI-G
3/8/2012	Ortiz-Rodriguez, Everardo	#534 (38.811741 -121.263310)	Vectobac BTI-G
6/8/2012	Ortiz-Rodriguez, Everardo	#534 (38.811741 -121.263310)	Vectobac BTI-G
10/2/2012	Goss, George	#578 (38.883951 -121.436691)	Vectobac BTI-G
4/2/2012	Ortiz-Rodriguez, Everardo	#581 (38.888181 -121.283290)	Vectobac BTI-G
6/25/2012	Goss, George	#583 (38.914929 -121.278462)	Vectobac BTI-G
6/1/2012	Goss, George	#584 (38.912457 -121.274064)	Vectobac BTI-G
7/3/2012	Goss, George	#584 (38.912457 -121.274064)	Vectobac BTI-G
7/18/2012	Goss, George	#584 (38.912457 -121.274064)	Vectobac BTI-G
5/15/2012	Goss, George	#591 (38.884619 -121.436820)	VectoBac GS
6/15/2012	Goss, George	#591 (38.884619 -121.436820)	Vectobac BTI-G
8/30/2012	Goss, George	#591 (38.884619 -121.436820)	Vectobac BTI-G
10/2/2012	Goss, George	#591 (38.884619 -121.436820)	Vectobac BTI-G
8/15/2012	Goss, George	#628 (38.912324 -121.276875)	Vectobac BTI-G
11/20/2012	Ashley, Mike	#640 (38.772864 -121.256104)	Vectobac BTI-G
4/26/2012	Ortiz-Rodriguez, Everardo	#659 (38.816623 -121.266414)	Vectobac BTI-G
4/26/2012	Ortiz-Rodriguez, Everardo	#659 (38.816623 -121.266414)	Golden Bear 1111
4/2/2012	Ortiz-Rodriguez, Everardo	#702 (38.874338 -121.287689)	Vectobac BTI-G
3/28/2012	Ortiz-Rodriguez, Everardo	#820 (38.798305 -121.269493)	Vectobac BTI-G
5/9/2012	Ortiz-Rodriguez, Everardo	#820 (38.798305 -121.269493)	Vectobac BTI-G
11/1/2012	Ortiz-Rodriguez, Everardo	#820 (38.798305 -121.269493)	Vectobac BTI-G
12/10/2012	Ortiz-Rodriguez, Everardo	#820 (38.798305 -121.269493)	Vectobac BTI-G
3/13/2012	Ortiz-Rodriguez, Everardo	#835 (38.813688 -121.267744)	Vectobac BTI-G
4/26/2012	Ortiz-Rodriguez, Everardo	#835 (38.813688 -121.267744)	Vectobac BTI-G
11/5/2012	Smith, Jason	#1422 (38.845691 -121.192637)	Vectobac BTI-G
6/15/2012	Goss, George	#1446 (38.846170 -121.397570)	Vectobac BTI-G
7/2/2012	Goss, George	#1446 (38.846170 -121.397570)	Vectobac BTI-G
9/24/2012	Smith, Jason	#1469 (38.915066 -121.246657)	Vectobac BTI-G
4/24/2012	Ashley, Mike	#1546 (38.759455 -121.333072)	Vectobac BTI-G
4/24/2012	Ashley, Mike	#1547 (38.758518 -121.333609)	Vectobac BTI-G
11/19/2012	Ashley, Mike	#1547 (38.758518 -121.333609)	Vectobac BTI-G
3/8/2012	Ashley, Mike	#1685 (38.773592 -121.282840)	VectoBac GS
3/21/2012	Ashley, Mike	#1817 (38.750999 -121.242029)	Vectobac BTI-G
11/15/2012	Ashley, Mike	#1825 (38.737729 -121.228155)	Vectobac BTI-G
11/29/2012	Crosby, Steve	#1841 (38.746544 -121.206772)	Vectobac BTI-G
12/4/2012	Crosby, Steve	#1841 (38.746544 -121.206772)	Vectobac BTI-G
5/7/2012	Ashley, Mike	#2163 (38.767421 -121.321549)	Vectobac BTI-G
9/17/2012	Crosby, Steve	#2302 (38.774250 -121.164330)	Vectobac BTI-G
3/21/2012	Goss, George	#2539 (38.887644 -121.423866)	Vectobac BTI-G
6/4/2012	Ashley, Mike	#2826 (38.745904 -121.343597)	Vectobac BTI-G
4/5/2012	Goss, George	#3055 (38.941078 -121.286498)	Vectobac BTI-G
4/27/2012	Ashley, Mike	#3173 (38.759572 -121.335518)	Vectobac BTI-G
11/26/2012	Ashley, Mike	#3173 (38.759572 -121.335518)	Vectobac BTI-G
12/26/2012	Smith, Jason	#3176 (38.814248 -121.195748)	Vectobac BTI-G

4/6/2012	Ashley, Mike	#3271 (38.765813 -121.315863)	Vectobac BTI-G
7/9/2012	Ashley, Mike	#3327 (38.736770 -121.244441)	Vectobac BTI-G
7/9/2012	Ashley, Mike	#3327 (38.736770 -121.244441)	Altosid Pellets
9/19/2012	Moore, Tommy	#3397 (38.898414 -121.423688)	Vectobac BTI-G
9/27/2012	Moore, Tommy	#3397 (38.898414 -121.423688)	Vectobac BTI-G
6/5/2012	Moore, Tommy	#3437 (38.808281 -121.441951)	VectoBac GS
6/18/2012	Moore, Tommy	#3462 (38.825195 -121.469637)	VectoBac GS
7/2/2012	Moore, Tommy	#3472 (38.844153 -121.451819)	VectoBac GS
8/8/2012	Moore, Tommy	#3472 (38.844153 -121.451819)	Vectobac BTI-G
8/3/2012	Moore, Tommy	#3559 (38.768987 -121.411951)	Vectobac BTI-G
5/1/2012	Moore, Tommy	#3578 (38.897306 -121.405181)	Vectobac BTI-G
9/27/2012	Moore, Tommy	#3578 (38.897306 -121.405181)	Vectobac BTI-G
9/28/2012	Goss, George	#3588 (38.892528 -121.352803)	Vectobac BTI-G
5/15/2012	Goss, George	#3676 (38.885204 -121.433870)	VectoBac GS
7/2/2012	Goss, George	#3676 (38.885204 -121.433870)	Vectobac BTI-G
8/15/2012	Goss, George	#3676 (38.885204 -121.433870)	Vectobac BTI-G
6/4/2012	Goss, George	#3679 (38.887793 -121.435404)	VectoBac GS
6/22/2012	Goss, George	#3679 (38.887793 -121.435404)	Vectobac BTI-G
7/17/2012	Goss, George	#3679 (38.887793 -121.435404)	Vectobac BTI-G
7/31/2012	Goss, George	#3679 (38.887793 -121.435404)	Vectobac BTI-G
8/17/2012	Goss, George	#3679 (38.887793 -121.435404)	Vectobac BTI-G
8/30/2012	Goss, George	#3679 (38.887793 -121.435404)	Vectobac BTI-G
10/9/2012	Goss, George	#3679 (38.887793 -121.435404)	Vectobac BTI-G
5/14/2012	Goss, George	#3697 (38.936112 -121.353221)	Vectobac BTI-G
9/5/2012	Goss, George	#3707 (38.927132 -121.318631)	Vectobac BTI-G
9/26/2012	Goss, George	#3707 (38.927132 -121.318631)	Vectobac BTI-G
8/2/2012	Goss, George	#3709 (38.937331 -121.319768)	Vectobac BTI-G
5/23/2012	Goss, George	#3711 (38.929603 -121.312623)	Vectobac BTI-G
6/5/2012	Goss, George	#3711 (38.929603 -121.312623)	VectoBac GS
9/26/2012	Goss, George	#3711 (38.929603 -121.312623)	Vectobac BTI-G
6/18/2012	Goss, George	#3714 (38.921790 -121.289878)	Vectobac BTI-G
7/23/2012	Goss, George	#3731 (38.898615 -121.365108)	Vectobac BTI-G
7/31/2012	Goss, George	#3731 (38.898615 -121.365108)	Vectobac BTI-G
8/9/2012	Goss, George	#3731 (38.898615 -121.365108)	Vectobac BTI-G
9/12/2012	Goss, George	#3731 (38.898615 -121.365108)	Vectobac BTI-G
5/17/2012	Goss, George	#3957 (38.888227 -121.439867)	Vectobac BTI-G
6/25/2012	Goss, George	#3957 (38.888227 -121.439867)	Vectobac BTI-G
7/19/2012	Goss, George	#3957 (38.888227 -121.439867)	Vectobac BTI-G
8/20/2012	Goss, George	#3957 (38.888227 -121.439867)	Vectobac BTI-G
9/4/2012	Goss, George	#3957 (38.888227 -121.439867)	Vectobac BTI-G
9/25/2012	Goss, George	#3957 (38.888227 -121.439867)	Vectobac BTI-G
10/15/2012	Ortiz-Rodriguez, Everardo	#3957 (38.888227 -121.439867)	Vectobac BTI-G
9/13/2012	Goss, George	#3973 (38.858057 -121.365141)	Vectobac BTI-G
8/21/2012	Goss, George	#3975 (38.864874 -121.380301)	Vectobac BTI-G
11/7/2012	Ortiz-Rodriguez, Everardo	#4128 (38.882256 -121.316850)	Vectobac BTI-G
9/13/2012	Ortiz-Rodriguez, Everardo	#4188 (38.826160 -121.295704)	Vectobac BTI-G
7/18/2012	Goss, George	#4294 (38.957749 -121.274107)	Vectobac BTI-G

7/24/2012	Goss, George	#4295 (38.956706 -121.277282)	Vectobac BTI-G
5/16/2012	Ortiz-Rodriguez, Everardo	#4304 (38.904675 -121.280833)	Vectobac BTI-G
11/27/2012	Ortiz-Rodriguez, Everardo	#4348 (38.807962 -121.214143)	Vectobac BTI-G
5/15/2012	Ortiz-Rodriguez, Everardo	#4508 (38.806701 -121.287707)	Vectobac BTI-G
4/9/2012	Ortiz-Rodriguez, Everardo	#4514 (38.800820 -121.281540)	Vectobac BTI-G
3/29/2012	Ashley, Mike	#4584 (38.767377 -121.341838)	Vectobac BTI-G
3/29/2012	Ashley, Mike	#4585 (38.766691 -121.344091)	Vectobac BTI-G
5/7/2012	Ashley, Mike	#4585 (38.766691 -121.344091)	Vectobac BTI-G
4/6/2012	Ashley, Mike	#4602 (38.771112 -121.347879)	Vectobac BTI-G
10/16/2012	Smith, Jason	#4842 (38.912512 -121.219470)	Vectobac BTI-G
10/29/2012	Smith, Jason	#4842 (38.912512 -121.219470)	Vectobac BTI-G
9/20/2012	Ashley, Mike	#4860 (38.789081 -121.292796)	Vectobac BTI-G
10/16/2012	Ashley, Mike	#4860 (38.789081 -121.292796)	Vectobac BTI-G
3/9/2012	Ashley, Mike	#4861 (38.773927 -121.279643)	VectoBac GS
3/29/2012	Ashley, Mike	#4861 (38.773927 -121.279643)	Vectobac BTI-G
5/4/2012	Ashley, Mike	#4861 (38.773927 -121.279643)	Vectobac BTI-G
4/26/2012	Smith, Jason	#4873 (38.906186 -121.261876)	Vectobac BTI-G
5/14/2012	Smith, Jason	#4873 (38.906186 -121.261876)	Vectobac BTI-G
4/26/2012	Smith, Jason	#4874 (38.904956 -121.262729)	Vectobac BTI-G
11/5/2012	Ortiz-Rodriguez, Everardo	#4919 (38.796699 -121.295028)	Vectobac BTI-G
12/4/2012	Smith, Jason	#4932 (38.907912 -121.217034)	Vectobac BTI-G
12/4/2012	Smith, Jason	#4933 (38.907791 -121.216503)	Vectobac BTI-G
7/17/2012	Ashley, Mike	#5020 (38.761061 -121.282218)	Vectobac BTI-G
8/21/2012	Ashley, Mike	#5020 (38.761061 -121.282218)	Vectobac BTI-G
4/3/2012	Ortiz-Rodriguez, Everardo	#5034 (38.803363 -121.281123)	Vectobac BTI-G
5/9/2012	Ortiz-Rodriguez, Everardo	#5034 (38.803363 -121.281123)	Vectobac BTI-G
4/6/2012	Ashley, Mike	#5070 (38.787693 -121.356099)	Vectobac BTI-G
4/26/2012	Smith, Jason	#5087 (38.905257 -121.254156)	Vectobac BTI-G
4/24/2012	Ashley, Mike	#5116 (38.764792 -121.354637)	Vectobac BTI-G
5/11/2012	Ashley, Mike	#5116 (38.764792 -121.354637)	Vectobac BTI-G
4/24/2012	Ashley, Mike	#5117 (38.764591 -121.344252)	Vectobac BTI-G
5/11/2012	Ashley, Mike	#5117 (38.764591 -121.344252)	Vectobac BTI-G
4/24/2012	Ashley, Mike	#5119 (38.765060 -121.349745)	Vectobac BTI-G
5/11/2012	Ashley, Mike	#5119 (38.765060 -121.349745)	Vectobac BTI-G
4/4/2012	Ortiz-Rodriguez, Everardo	#5153 (38.882055 -121.264831)	Vectobac BTI-G
4/3/2012	Ortiz-Rodriguez, Everardo	#5211 (38.818873 -121.264451)	Vectobac BTI-G
12/10/2012	Ortiz-Rodriguez, Everardo	#5211 (38.818873 -121.264451)	Vectobac BTI-G
4/3/2012	Ortiz-Rodriguez, Everardo	#5212 (38.820418 -121.264150)	Vectobac BTI-G
6/4/2012	Ortiz-Rodriguez, Everardo	#5247 (38.840079 -121.279140)	Vectobac BTI-G
6/22/2012	Ortiz-Rodriguez, Everardo	#5247 (38.840079 -121.279140)	Vectobac BTI-G
7/2/2012	Ortiz-Rodriguez, Everardo	#5247 (38.840079 -121.279140)	Vectobac BTI-G
9/17/2012	Crosby, Steve	#5257 (38.785165 -121.166701)	Vectobac BTI-G
5/31/2012	Ghilarducci, Brian	#5258 (38.785285 -121.167955)	Vectobac BTI-G
11/27/2012	Ortiz-Rodriguez, Everardo	#5298 (38.883815 -121.268122)	Vectobac BTI-G
4/4/2012	Ghilarducci, Brian	#5300 (38.718398 -121.215205)	Vectobac BTI-G
4/24/2012	Smith, Jason	#5305 (38.835914 -121.199284)	Vectobac BTI-G
12/10/2012	Smith, Jason	#5305 (38.835914 -121.199284)	Vectobac BTI-G

12/27/2012	Smith, Jason	#5315 (38.839449 -121.186584)	Vectobac BTI-G
12/26/2012	Smith, Jason	#5368 (38.838337 -121.201360)	Vectobac BTI-G
10/19/2012	Williams, Ted	#5373 (38.779931 -121.289448)	Vectobac BTI-G
11/6/2012	Ashley, Mike	#5373 (38.779931 -121.289448)	Vectobac BTI-G
5/9/2012	Ortiz-Rodriguez, Everardo	#5398 (38.787921 -121.250852)	Vectobac BTI-G
3/20/2012	Smith, Jason	#5461 (38.820276 -121.134653)	Vectobac BTI-G
9/11/2012	Ortiz-Rodriguez, Everardo	#5815 (38.839047 -121.306895)	Vectobac BTI-G
12/19/2012	Smith, Jason	#5864 (38.905461 -121.239603)	Vectobac BTI-G
4/11/2012	Ashley, Mike	#5873 (38.782541 -121.283097)	Vectobac BTI-G
11/7/2012	Ghilarducci, Brian	#5939 (38.746306 -121.208639)	Vectobac BTI-G
11/29/2012	Crosby, Steve	#5939 (38.746306 -121.208639)	Vectobac BTI-G
5/17/2012	Goss, George	#5941 (38.910170 -121.364679)	Vectobac BTI-G
6/15/2012	Goss, George	#5941 (38.910170 -121.364679)	Vectobac BTI-G
6/18/2012	Goss, George	#5941 (38.910170 -121.364679)	Vectobac BTI-G
6/22/2012	Goss, George	#5941 (38.910170 -121.364679)	Vectobac BTI-G
8/7/2012	Goss, George	#5941 (38.910170 -121.364679)	Vectobac BTI-G
8/9/2012	Goss, George	#5941 (38.910170 -121.364679)	Vectobac BTI-G
8/28/2012	Goss, George	#5941 (38.910170 -121.364679)	VectoMax CG
9/4/2012	Goss, George	#5941 (38.910170 -121.364679)	Vectobac BTI-G
9/25/2012	Goss, George	#5941 (38.910170 -121.364679)	Vectobac BTI-G
5/21/2012	Goss, George	#5942 (38.910671 -121.361933)	Vectobac BTI-G
6/4/2012	Goss, George	#5942 (38.910671 -121.361933)	VectoBac GS
6/7/2012	Goss, George	#5942 (38.910671 -121.361933)	VectoBac GS
6/26/2012	Goss, George	#5942 (38.910671 -121.361933)	Vectobac BTI-G
6/29/2012	Goss, George	#5942 (38.910671 -121.361933)	Vectobac BTI-G
7/10/2012	Goss, George	#5942 (38.910671 -121.361933)	Vectobac BTI-G
7/17/2012	Goss, George	#5942 (38.910671 -121.361933)	Vectobac BTI-G
7/31/2012	Goss, George	#5942 (38.910671 -121.361933)	Vectobac BTI-G
8/13/2012	Goss, George	#5942 (38.910671 -121.361933)	Vectobac BTI-G
8/16/2012	Goss, George	#5942 (38.910671 -121.361933)	Vectobac BTI-G
8/21/2012	Goss, George	#5942 (38.910671 -121.361933)	Vectobac BTI-G
9/12/2012	Goss, George	#5942 (38.910671 -121.361933)	Vectobac BTI-G
10/8/2012	Goss, George	#5942 (38.910671 -121.361933)	Vectobac BTI-G
3/26/2012	Ghilarducci, Brian	#6053 (38.741900 -121.210140)	Vectobac BTI-G
12/27/2012	Crosby, Steve	#6053 (38.741900 -121.210140)	Vectobac BTI-G
12/28/2012	Geeve, Brent	#6053 (38.741900 -121.210140)	VectoMax CG
5/15/2012	Ghilarducci, Brian	#6638 (38.740996 -121.205163)	Vectobac BTI-G
12/27/2012	Crosby, Steve	#6638 (38.740996 -121.205163)	Vectobac BTI-G
12/26/2012	Smith, Jason	#6837 (38.846443 -121.212008)	Vectobac BTI-G
12/27/2012	Smith, Jason	#6838 (38.843552 -121.194853)	Vectobac BTI-G
8/9/2012	Geeve, Brent	#7046 (38.963000 -121.126682)	VectoMax CG
8/13/2012	Moore, Tommy	#7084 (38.875432 -121.377296)	VectoMax CG
5/15/2012	Ortiz-Rodriguez, Everardo	#7089 (38.810950 -121.275828)	Vectobac BTI-G
9/19/2012	Crosby, Steve	#7097 (38.825548 -121.390994)	Vectobac BTI-G
4/27/2012	Goss, George	#7139 (38.975525 -121.389098)	Dragnet SFR
7/17/2012	Goss, George	#7140 (38.973923 -121.388068)	Vectobac BTI-G
7/20/2012	Goss, George	#7140 (38.973923 -121.388068)	Vectobac BTI-G

10/11/2012	Goss, George	#7140 (38.973923 -121.388068)	Vectolex CG
10/15/2012	Ortiz-Rodriguez, Everardo	#7140 (38.973923 -121.388068)	Vectobac BTI-G
10/19/2012	Goss, George	#7140 (38.973923 -121.388068)	VectoMax CG
10/4/2012	Ortiz-Rodriguez, Everardo	#7141 (38.965081 -121.388282)	VectoMax CG
10/4/2012	Ortiz-Rodriguez, Everardo	#7141 (38.965081 -121.388282)	Vectobac BTI-G
10/5/2012	Goss, George	#7141 (38.965081 -121.388282)	Zenivex E4
4/26/2012	Smith, Jason	#7684 (38.906238 -121.262235)	Vectobac BTI-G
8/23/2012	Goss, George	#7867 (38.844153 -121.423345)	Vectobac BTI-G
5/4/2012	Smith, Jason	#7991 (38.820054 -121.213907)	Vectobac BTI-G
4/24/2012	Smith, Jason	#8001 (38.841901 -121.198173)	Vectobac BTI-G
12/27/2012	Smith, Jason	#8001 (38.841901 -121.198173)	Vectobac BTI-G
8/2/2012	Ortiz-Rodriguez, Everardo	#8291 (38.882475 -121.317049)	Vectobac BTI-G
4/27/2012	Ortiz-Rodriguez, Everardo	#8681 (38.796519 -121.219025)	Vectobac BTI-G
3/20/2012	Smith, Jason	#9001 (38.826010 -121.147080)	Golden Bear 1111
4/26/2012	Smith, Jason	#9062 (38.902435 -121.257988)	Vectobac BTI-G
4/2/2012	Smith, Jason	#9305 (38.826954 -121.171989)	Vectobac BTI-G
5/15/2012	Smith, Jason	#9533 (38.896719 -121.183448)	Vectobac BTI-G
10/8/2012	Goss, George	#9549 (38.893471 -121.349487)	Vectobac BTI-G
5/23/2012	Ortiz-Rodriguez, Everardo	#9552 (38.872070 -121.319919)	Vectobac BTI-G
11/5/2012	Ortiz-Rodriguez, Everardo	#9569 (38.785084 -121.268898)	Vectobac BTI-G
12/27/2012	Smith, Jason	#9601 (38.816857 -121.207577)	Vectobac BTI-G
4/30/2012	Ortiz-Rodriguez, Everardo	#9605 (38.806900 -121.296701)	Vectobac BTI-G
4/30/2012	Ortiz-Rodriguez, Everardo	#9606 (38.805437 -121.295135)	Vectobac BTI-G
11/26/2012	Ortiz-Rodriguez, Everardo	#9606 (38.805437 -121.295135)	Vectobac BTI-G
3/26/2012	Ghilarducci, Brian	#9789 (38.796549 -121.134750)	Vectobac BTI-G
4/10/2012	Ortiz-Rodriguez, Everardo	#9876 (38.787258 -121.230515)	Vectobac BTI-G
12/19/2012	Smith, Jason	#10032 (38.892790 -121.239510)	Vectobac BTI-G
4/2/2012	Smith, Jason	#10041 (38.814390 -121.159370)	Vectobac BTI-G
12/11/2012	Smith, Jason	#10041 (38.814390 -121.159370)	Vectobac BTI-G
3/20/2012	Smith, Jason	#10054 (38.827351 -121.206901)	Vectobac BTI-G
6/1/2012	Geeve, Brent	#10096 (38.950970 -121.037474)	Vectolex CG
11/19/2012	Ortiz-Rodriguez, Everardo	#10156 (38.884090 -121.291940)	Vectobac BTI-G
4/24/2012	Smith, Jason	#10241 (38.842912 -121.192997)	Vectobac BTI-G
4/24/2012	Smith, Jason	#10288 (38.840890 -121.199005)	Vectobac BTI-G
12/10/2012	Smith, Jason	#10288 (38.840890 -121.199005)	Vectobac BTI-G
5/18/2012	Ghilarducci, Brian	#10417 (38.754920 -121.166790)	Vectobac BTI-G
3/20/2012	Smith, Jason	#10551 (38.834718 -121.204530)	Vectobac BTI-G
4/24/2012	Smith, Jason	#10551 (38.834718 -121.204530)	Vectobac BTI-G
6/18/2012	Smith, Jason	#10552 (38.903260 -121.180830)	Vectobac BTI-G
12/19/2012	Smith, Jason	#10552 (38.903260 -121.180830)	Vectobac BTI-G
5/14/2012	Smith, Jason	#10590 (38.905290 -121.219856)	Vectobac BTI-G
5/14/2012	Smith, Jason	#10593 (38.905445 -121.220655)	Vectobac BTI-G
8/2/2012	Management, Arena Pesticide	#10720 (38.753693 -121.289520)	Anvil 10 10
8/3/2012	Management, Arena Pesticide	#10720 (38.753693 -121.289520)	Anvil 10 10
8/4/2012	Management, Arena Pesticide	#10720 (38.753693 -121.289520)	Anvil 10 10
8/9/2012	Management, Arena Pesticide	#10720 (38.753693 -121.289520)	Anvil 10 10
8/10/2012	Management, Arena Pesticide	#10720 (38.753693 -121.289520)	Anvil 10 10

8/16/2012	Management, Arena Pesticide	#10720 (38.753693 -121.289520)	Anvil 10 10
9/1/2012	Management, Arena Pesticide	#10720 (38.753693 -121.289520)	Anvil 10 10
9/2/2012	Management, Arena Pesticide	#10720 (38.753693 -121.289520)	Anvil 10 10
9/6/2012	Management, Arena Pesticide	#10720 (38.753693 -121.289520)	Anvil 10 10
9/7/2012	Management, Arena Pesticide	#10720 (38.753693 -121.289520)	Anvil 10 10
9/14/2012	Management, Arena Pesticide	#10720 (38.753693 -121.289520)	Anvil 10 10
9/15/2012	Management, Arena Pesticide	#10720 (38.753693 -121.289520)	Anvil 10 10
4/30/2012	Smith, Jason	#10737 (38.900749 -121.197333)	Vectobac BTI-G
3/5/2012	Smith, Jason	#11269 (38.810921 -121.202754)	Vectobac BTI-G
5/29/2012	Embrey, Robyn	#11503 (39.062305 -120.148000)	Vectobac BTI-G
6/7/2012	Long, Katherine	#11600 (39.073970 -120.154779)	Vectobac BTI-G
7/2/2012	Embrey, Robyn	#11600 (39.073970 -120.154779)	Vectobac BTI-G
6/21/2012	Long, Katherine	#11787 (39.168541 -120.236671)	Vectobac BTI-G
8/6/2012	Long, Katherine	#11787 (39.168541 -120.236671)	Vectobac BTI-G
8/16/2012	Embrey, Robyn	#11787 (39.168541 -120.236671)	Vectobac BTI-G
8/29/2012	Embrey, Robyn	#11787 (39.168541 -120.236671)	Vectobac BTI-G
9/12/2012	Long, Katherine	#11787 (39.168541 -120.236671)	Vectobac BTI-G
10/15/2012	Ashley, Mike	#11845 (38.802878 -121.326592)	Vectobac BTI-G
7/13/2012	Goss, George	#11910 (38.841112 -121.413238)	Vectobac BTI-G
8/20/2012	Goss, George	#11910 (38.841112 -121.413238)	Vectobac BTI-G
9/14/2012	Goss, George	#11910 (38.841112 -121.413238)	Vectobac BTI-G
8/17/2012	Goss, George	#11913 (38.839240 -121.409955)	Vectobac BTI-G
9/10/2012	Goss, George	#11913 (38.839240 -121.409955)	Vectobac BTI-G
8/31/2012	Goss, George	#11915 (38.853372 -121.400696)	Vectobac BTI-G
8/16/2012	Smith, Jason	#11938 (38.945158 -121.244688)	Vectobac BTI-G
5/3/2012	Long, Katherine	#11966 (39.074139 -120.154556)	Vectobac BTI-G
6/7/2012	Long, Katherine	#11966 (39.074139 -120.154556)	Agnique
6/7/2012	Long, Katherine	#11966 (39.074139 -120.154556)	Vectobac BTI-G
6/14/2012	Long, Katherine	#11966 (39.074139 -120.154556)	Vectobac BTI-G
7/20/2012	Long, Katherine	#11966 (39.074139 -120.154556)	Vectobac BTI-G
10/8/2012	Long, Katherine	#11966 (39.074139 -120.154556)	Vectobac BTI-G
10/18/2012	Ortiz-Rodriguez, Everardo	#12077 (38.860191 -121.244665)	Vectobac BTI-G
10/31/2012	Geeve, Brent	#12203 (38.947574 -121.090300)	VectoMax CG
6/6/2012	Ortiz-Rodriguez, Everardo	#12333 (38.873277 -121.291648)	Vectobac BTI-G
12/10/2012	Smith, Jason	#12421 (38.815883 -121.209256)	Vectobac BTI-G
8/15/2012	Geeve, Brent	#12489 (38.918652 -121.063328)	VectoMax CG
9/10/2012	Long, Katherine	#12587 (39.237790 -120.032860)	Vectobac BTI-G
4/24/2012	Long, Katherine	#12865 (39.228011 -120.203910)	Vectobac BTI-G
8/14/2012	Embrey, Robyn	#12865 (39.228011 -120.203910)	Vectobac BTI-G
8/23/2012	Long, Katherine	#12865 (39.228011 -120.203910)	Vectobac BTI-G
9/27/2012	Long, Katherine	#12865 (39.228011 -120.203910)	Vectobac BTI-G
5/24/2012	Embrey, Robyn	#13064 (39.139880 -120.154060)	Vectobac BTI-G
6/6/2012	Embrey, Robyn	#13064 (39.139880 -120.154060)	Vectobac BTI-G
7/23/2012	Embrey, Robyn	#13064 (39.139880 -120.154060)	Vectobac BTI-G
8/10/2012	Long, Katherine	#13064 (39.139880 -120.154060)	Vectobac BTI-G
12/10/2012	Smith, Jason	#13134 (38.910212 -121.274557)	Vectobac BTI-G
12/10/2012	Smith, Jason	#13135 (38.910669 -121.274524)	Vectobac BTI-G

7/19/2012	Geeve, Brent	#13195 (38.947394 -121.090879)	VectoMax CG
6/7/2012	Long, Katherine	#13256 (39.105630 -120.196590)	Agnique
7/11/2012	Embrey, Robyn	#13256 (39.105630 -120.196590)	Vectobac BTI-G
8/1/2012	Embrey, Robyn	#13256 (39.105630 -120.196590)	Vectobac BTI-G
8/13/2012	Long, Katherine	#13256 (39.105630 -120.196590)	Vectobac BTI-G
10/29/2012	Smith, Jason	#13268 (38.913438 -121.260891)	Golden Bear 1111
6/19/2012	Ashley, Mike	#13321 (38.749901 -121.351121)	Vectobac BTI-G
10/5/2012	Ashley, Mike	#13321 (38.749901 -121.351121)	Vectobac BTI-G
10/11/2012	Ashley, Mike	#13321 (38.749901 -121.351121)	Vectobac BTI-G
11/5/2012	Ashley, Mike	#13321 (38.749901 -121.351121)	Vectobac BTI-G
7/18/2012	Long, Katherine	#13763 (39.315590 -120.147800)	Vectobac BTI-G
5/23/2012	Goss, George	#13906 (38.935178 -121.311808)	Vectobac BTI-G
6/22/2012	Goss, George	#13906 (38.935178 -121.311808)	Vectobac BTI-G
9/5/2012	Goss, George	#13908 (38.937915 -121.315885)	Vectobac BTI-G
8/15/2012	Ortiz-Rodriguez, Everardo	#14129 (38.821469 -121.301007)	Vectobac BTI-G
9/7/2012	Ortiz-Rodriguez, Everardo	#14129 (38.821469 -121.301007)	Vectobac BTI-G
9/21/2012	Ortiz-Rodriguez, Everardo	#14129 (38.821469 -121.301007)	Vectobac BTI-G
4/3/2012	Goss, George	#15230 (38.875190 -121.319270)	Vectobac BTI-G
4/11/2012	Ortiz-Rodriguez, Everardo	#15277 (38.885406 -121.293652)	Vectobac BTI-G
6/22/2012	Ortiz-Rodriguez, Everardo	#15294 (38.867458 -121.322370)	Vectobac BTI-G
4/17/2012	Ortiz-Rodriguez, Everardo	#15295 (38.868566 -121.318599)	Vectobac BTI-G
5/4/2012	Ortiz-Rodriguez, Everardo	#15296 (38.882748 -121.307768)	Vectobac BTI-G
4/3/2012	Goss, George	#15326 (38.897964 -121.356633)	Vectobac BTI-G
3/7/2012	Smith, Jason	#15356 (38.905745 -121.249897)	Vectobac BTI-G
4/2/2012	Ortiz-Rodriguez, Everardo	#15580 (38.876810 -121.269010)	Vectobac BTI-G
10/3/2012	Smith, Jason	#15597 (38.932353 -121.121811)	Vectobac BTI-G
9/19/2012	Crosby, Steve	#15637 (38.826194 -121.392735)	Vectobac BTI-G
4/23/2012	Long, Katherine	#15956 (39.206700 -120.206630)	Vectobac BTI-G
5/18/2012	Long, Katherine	#15956 (39.206700 -120.206630)	Vectobac BTI-G
6/12/2012	Embrey, Robyn	#15956 (39.206700 -120.206630)	Vectobac BTI-G
6/14/2012	Long, Katherine	#15956 (39.206700 -120.206630)	Vectobac BTI-G
6/29/2012	Long, Katherine	#15956 (39.206700 -120.206630)	Vectobac BTI-G
7/13/2012	Embrey, Robyn	#15956 (39.206700 -120.206630)	Vectobac BTI-G
7/19/2012	Long, Katherine	#15956 (39.206700 -120.206630)	Vectobac BTI-G
8/6/2012	Long, Katherine	#15956 (39.206700 -120.206630)	Vectobac BTI-G
8/14/2012	Embrey, Robyn	#15956 (39.206700 -120.206630)	Vectobac BTI-G
8/23/2012	Long, Katherine	#15956 (39.206700 -120.206630)	Vectobac BTI-G
6/6/2012	Embrey, Robyn	#15958 (39.165856 -120.146133)	Vectobac BTI-G
7/3/2012	Embrey, Robyn	#15958 (39.165856 -120.146133)	Vectobac BTI-G
7/19/2012	Long, Katherine	#15958 (39.165856 -120.146133)	Vectobac BTI-G
7/24/2012	Embrey, Robyn	#15958 (39.165856 -120.146133)	Vectobac BTI-G
8/15/2012	Embrey, Robyn	#15958 (39.165856 -120.146133)	Vectobac BTI-G
9/11/2012	Embrey, Robyn	#15958 (39.165856 -120.146133)	Vectobac BTI-G
9/19/2012	Long, Katherine	#15958 (39.165856 -120.146133)	Vectobac BTI-G
6/29/2012	Embrey, Robyn	#16154 (39.227134 -120.079193)	Vectobac BTI-G
7/19/2012	Embrey, Robyn	#16154 (39.227134 -120.079193)	Vectobac BTI-G
7/26/2012	Long, Katherine	#16160 (39.238137 -120.030484)	Vectobac BTI-G

8/27/2012	Long, Katherine	#16160 (39.238137 -120.030484)	Vectobac BTI-G
4/25/2012	Long, Katherine	#16293 (39.202246 -120.221694)	Vectobac BTI-G
12/19/2012	Smith, Jason	#16375 (38.904847 -121.186345)	Vectobac BTI-G
2/9/2012	Smith, Jason	#16642 (38.818829 -121.209256)	Vectobac BTI-G
12/26/2012	Smith, Jason	#16642 (38.818829 -121.209256)	Vectobac BTI-G
7/26/2012	Long, Katherine	#16670 (39.239898 -120.039690)	Vectobac BTI-G
5/17/2012	Embrey, Robyn	#16734 (39.302433 -120.379783)	Vectobac BTI-G
5/24/2012	Embrey, Robyn	#16964 (39.147840 -120.178740)	Vectobac BTI-G
6/8/2012	Long, Katherine	#17047 (39.110660 -120.166930)	Vectobac BTI-G
7/11/2012	Embrey, Robyn	#17047 (39.110660 -120.166930)	Vectobac BTI-G
7/23/2012	Long, Katherine	#17047 (39.110660 -120.166930)	Vectobac BTI-G
9/17/2012	Long, Katherine	#17047 (39.110660 -120.166930)	Vectobac BTI-G
10/1/2012	Long, Katherine	#17047 (39.110660 -120.166930)	Vectobac BTI-G
8/27/2012	Smith, Jason	#17053 (38.939172 -121.151199)	Vectobac BTI-G
5/17/2012	Embrey, Robyn	#17063 (39.303390 -120.380940)	Vectobac BTI-G
6/1/2012	Long, Katherine	#17115 (39.311060 -120.382730)	Vectobac BTI-G
6/1/2012	Long, Katherine	#17115 (39.311060 -120.382730)	Agnique
9/10/2012	Ortiz-Rodriguez, Everardo	#17125 (38.849012 -121.262802)	Vectobac BTI-G
5/14/2012	Long, Katherine	#17180 (39.182560 -120.127820)	Vectobac BTI-G
5/15/2012	Long, Katherine	#17180 (39.182560 -120.127820)	Agnique
8/21/2012	Smith, Jason	#17218 (38.950907 -121.255213)	Vectobac BTI-G
7/10/2012	Long, Katherine	#17272 (39.180900 -120.128070)	Vectobac BTI-G
8/27/2012	Long, Katherine	#17272 (39.180900 -120.128070)	Vectobac BTI-G
9/11/2012	Embrey, Robyn	#17272 (39.180900 -120.128070)	Vectobac BTI-G
9/24/2012	Long, Katherine	#17272 (39.180900 -120.128070)	Vectobac BTI-G
4/3/2012	Geeve, Brent	#17324 (39.007813 -121.045260)	VectoMax CG
12/11/2012	Geeve, Brent	#17324 (39.007813 -121.045260)	VectoMax CG
5/17/2012	Embrey, Robyn	#17350 (39.303238 -120.388774)	Vectobac BTI-G
7/24/2012	Long, Katherine	#17351 (39.302860 -120.389880)	Vectobac BTI-G
5/31/2012	Embrey, Robyn	#17352 (39.303506 -120.390378)	Vectobac BTI-G
6/8/2012	Embrey, Robyn	#17445 (39.161774 -120.145688)	Vectobac BTI-G
6/15/2012	Ortiz-Rodriguez, Everardo	#17529 (38.884455 -121.302922)	Vectobac BTI-G
7/16/2012	Ortiz-Rodriguez, Everardo	#17529 (38.884455 -121.302922)	Vectobac BTI-G
9/4/2012	Ortiz-Rodriguez, Everardo	#17529 (38.884455 -121.302922)	Vectobac BTI-G
8/29/2012	Smith, Jason	#17636 (38.915954 -121.094792)	Vectobac BTI-G
11/19/2012	Ashley, Mike	#17818 (38.762094 -121.341238)	Vectobac BTI-G
11/14/2012	Smith, Jason	#18037 (38.902054 -121.148010)	Vectobac BTI-G
6/13/2012	Ghilarducci, Brian	#18451 (38.798397 -121.133280)	Vectobac BTI-G
8/6/2012	Ghilarducci, Brian	#18486 (38.779313 -121.233144)	Vectobac BTI-G
4/4/2012	Ghilarducci, Brian	#18569 (38.744478 -121.192482)	Vectobac BTI-G
6/25/2012	Smith, Jason	#18711 (38.858057 -121.140146)	Vectobac BTI-G
9/5/2012	Smith, Jason	#18711 (38.858057 -121.140146)	Vectobac BTI-G
6/4/2012	Ashley, Mike	#18753 (38.773441 -121.296015)	Vectobac BTI-G
2/24/2012	Ortiz-Rodriguez, Everardo	#18891 (38.787705 -121.249997)	Vectobac BTI-G
7/6/2012	Embrey, Robyn	#19067 (39.306194 -120.387819)	Vectobac BTI-G
5/14/2012	Long, Katherine	#19138 (39.183899 -120.119979)	Vectobac BTI-G
6/11/2012	Long, Katherine	#19191 (39.300910 -120.382180)	Vectobac BTI-G

6/11/2012	Long, Katherine	#19191 (39.300910 -120.382180)	Agnique
8/14/2012	Geeve, Brent	#19222 (38.928710 -121.050800)	VectoMax CG
6/20/2012	Goss, George	#19271 (38.966817 -121.270866)	Vectobac BTI-G
7/18/2012	Goss, George	#19271 (38.966817 -121.270866)	Vectobac BTI-G
7/18/2012	Goss, George	#19273 (38.964197 -121.272175)	Vectobac BTI-G
9/14/2012	Embrey, Robyn	#19290 (39.298323 -120.380738)	Vectobac BTI-G
12/28/2012	Geeve, Brent	#19396 (39.008347 -121.045260)	Vectobac BTI-G
7/2/2012	Embrey, Robyn	#19491 (39.075970 -120.155690)	Vectobac BTI-G
7/20/2012	Long, Katherine	#19491 (39.075970 -120.155690)	Vectobac BTI-G
7/31/2012	Embrey, Robyn	#19491 (39.075970 -120.155690)	Vectobac BTI-G
8/10/2012	Long, Katherine	#19491 (39.075970 -120.155690)	Vectobac BTI-G
8/22/2012	Embrey, Robyn	#19491 (39.075970 -120.155690)	Vectobac BTI-G
9/4/2012	Embrey, Robyn	#19491 (39.075970 -120.155690)	Vectobac BTI-G
9/26/2012	Embrey, Robyn	#19491 (39.075970 -120.155690)	Vectobac BTI-G
8/6/2012	Smith, Jason	#19527 (38.921189 -121.234946)	Vectobac BTI-G
8/21/2012	Smith, Jason	#19527 (38.921189 -121.234946)	Vectobac BTI-G
8/29/2012	Ghilarducci, Brian	#19591 (38.797226 -121.199756)	Deltadust
6/21/2012	Long, Katherine	#19656 (39.187866 -120.204498)	Vectobac BTI-G
7/9/2012	Embrey, Robyn	#19656 (39.187866 -120.204498)	Vectobac BTI-G
7/25/2012	Embrey, Robyn	#19656 (39.187866 -120.204498)	Vectobac BTI-G
8/16/2012	Embrey, Robyn	#19656 (39.187866 -120.204498)	Vectobac BTI-G
8/29/2012	Embrey, Robyn	#19656 (39.187866 -120.204498)	Vectobac BTI-G
9/12/2012	Long, Katherine	#19656 (39.187866 -120.204498)	Vectobac BTI-G
5/7/2012	Long, Katherine	#19801 (39.217060 -120.103011)	Vectobac BTI-G
6/18/2012	Long, Katherine	#19801 (39.217060 -120.103011)	Vectobac BTI-G
6/25/2012	Smith, Jason	#20028 (38.816990 -121.213607)	Vectobac BTI-G
4/24/2012	Ortiz-Rodriguez, Everardo	#20234 (38.833131 -121.291549)	Vectobac BTI-G
9/13/2012	Ortiz-Rodriguez, Everardo	#20235 (38.833308 -121.292874)	Vectobac BTI-G
7/10/2012	Smith, Jason	#20548 (38.948646 -121.230386)	Vectobac BTI-G
2/9/2012	Smith, Jason	#20651 (38.825567 -121.143183)	Vectobac BTI-G
3/20/2012	Smith, Jason	#20651 (38.825567 -121.143183)	Vectobac BTI-G
12/11/2012	Smith, Jason	#20651 (38.825567 -121.143183)	Vectobac BTI-G
12/10/2012	Smith, Jason	#20709 (38.820926 -121.201577)	Vectobac BTI-G
11/6/2012	Smith, Jason	#20712 (38.846978 -121.216793)	Vectobac BTI-G
7/17/2012	Ashley, Mike	#20744 (38.772999 -121.277154)	Vectobac BTI-G
8/2/2012	Ashley, Mike	#20744 (38.772999 -121.277154)	Vectobac BTI-G
10/16/2012	Ashley, Mike	#20744 (38.772999 -121.277154)	Vectobac BTI-G
4/2/2012	Smith, Jason	#21190 (38.823101 -121.207695)	Vectobac BTI-G
12/27/2012	Smith, Jason	#21190 (38.823101 -121.207695)	Vectobac BTI-G
5/3/2012	Long, Katherine	#21225 (39.107460 -120.173250)	Vectobac BTI-G
6/8/2012	Long, Katherine	#21225 (39.107460 -120.173250)	Agnique
5/4/2012	Long, Katherine	#21432 (39.108570 -120.173090)	Vectobac BTI-G
7/11/2012	Embrey, Robyn	#21432 (39.108570 -120.173090)	Vectobac BTI-G
8/13/2012	Long, Katherine	#21432 (39.108570 -120.173090)	Vectobac BTI-G
5/4/2012	Long, Katherine	#21433 (39.108885 -120.174122)	Vectobac BTI-G
5/8/2012	Long, Katherine	#21433 (39.108885 -120.174122)	Vectobac BTI-G
6/8/2012	Long, Katherine	#21433 (39.108885 -120.174122)	Vectobac BTI-G

9/7/2012	Long, Katherine	#21433 (39.108885 -120.174122)	Vectobac BTI-G
9/17/2012	Long, Katherine	#21433 (39.108885 -120.174122)	Vectobac BTI-G
10/1/2012	Long, Katherine	#21433 (39.108885 -120.174122)	Vectobac BTI-G
7/6/2012	Embrey, Robyn	#21493 (39.304390 -120.385590)	Vectobac BTI-G
8/15/2012	Smith, Jason	#21590 (38.939676 -121.230966)	Vectobac BTI-G
8/28/2012	Ashley, Mike	#21621 (38.810227 -121.349562)	Vectobac BTI-G
9/10/2012	Ashley, Mike	#21621 (38.810227 -121.349562)	Vectobac BTI-G
9/27/2012	Ashley, Mike	#21621 (38.810227 -121.349562)	Vectobac BTI-G
10/10/2012	Ashley, Mike	#21621 (38.810227 -121.349562)	Golden Bear 1111
6/21/2012	Ashley, Mike	#21725 (38.791256 -121.365108)	Vectobac BTI-G
7/10/2012	Ashley, Mike	#21725 (38.791256 -121.365108)	Vectobac BTI-G
10/15/2012	Ashley, Mike	#21725 (38.791256 -121.365108)	Vectobac BTI-G
6/29/2012	Embrey, Robyn	#21755 (39.246753 -120.046513)	Vectobac BTI-G
6/29/2012	Embrey, Robyn	#21755 (39.246753 -120.046513)	Agnique
6/19/2012	Long, Katherine	#21811 (39.127264 -120.166869)	Vectobac BTI-G
8/2/2012	Embrey, Robyn	#21811 (39.127264 -120.166869)	Vectobac BTI-G
7/31/2012	Long, Katherine	#21908 (39.175579 -120.146987)	Vectobac BTI-G
11/19/2012	Geeve, Brent	#22055 (38.919211 -121.003332)	VectoMax CG
2/15/2012	Smith, Jason	#22186 (38.835280 -121.163782)	Vectobac BTI-G
3/21/2012	Smith, Jason	#22186 (38.835280 -121.163782)	Vectobac BTI-G
8/24/2012	Smith, Jason	#22252 (38.864677 -121.145934)	Vectobac BTI-G
10/2/2012	Smith, Jason	#22252 (38.864677 -121.145934)	Vectobac BTI-G
12/19/2012	Smith, Jason	#22525 (38.903082 -121.201086)	Vectobac BTI-G
5/7/2012	Smith, Jason	#23124 (38.864260 -121.166936)	Vectobac BTI-G
5/1/2012	Long, Katherine	#23126 (39.062039 -120.147619)	Vectobac BTI-G
5/8/2012	Long, Katherine	#23126 (39.062039 -120.147619)	Vectobac BTI-G
5/8/2012	Long, Katherine	#23127 (39.046730 -120.164870)	Vectobac BTI-G
5/29/2012	Embrey, Robyn	#23127 (39.046730 -120.164870)	Vectobac BTI-G
5/8/2012	Long, Katherine	#23128 (39.045528 -120.167620)	Vectobac BTI-G
5/1/2012	Long, Katherine	#23129 (39.057660 -120.151050)	Vectobac BTI-G
8/15/2012	Embrey, Robyn	#23273 (39.137729 -120.183182)	Vectobac BTI-G
7/16/2012	Ortiz-Rodriguez, Everardo	#23332 (38.885471 -121.307516)	Vectobac BTI-G
6/19/2012	Long, Katherine	#23370 (39.297180 -120.380190)	Vectobac BTI-G
6/19/2012	Long, Katherine	#23370 (39.297180 -120.380190)	Agnique
7/24/2012	Long, Katherine	#23370 (39.297180 -120.380190)	Vectobac BTI-G
8/22/2012	Long, Katherine	#23370 (39.297180 -120.380190)	Vectobac BTI-G
5/30/2012	Long, Katherine	#23459 (39.303975 -120.385004)	Agnique
5/30/2012	Long, Katherine	#23459 (39.303975 -120.385004)	Vectobac BTI-G
7/6/2012	Embrey, Robyn	#23459 (39.303975 -120.385004)	Vectobac BTI-G
7/25/2012	Long, Katherine	#23459 (39.303975 -120.385004)	Vectobac BTI-G
5/11/2012	Embrey, Robyn	#23483 (39.187929 -120.205243)	Vectobac BTI-G
6/6/2012	Embrey, Robyn	#23483 (39.187929 -120.205243)	Vectobac BTI-G
7/9/2012	Embrey, Robyn	#23483 (39.187929 -120.205243)	Vectobac BTI-G
8/16/2012	Embrey, Robyn	#23483 (39.187929 -120.205243)	Vectobac BTI-G
5/15/2012	Ashley, Mike	#23509 (38.731950 -121.391350)	Vectobac BTI-G
5/31/2012	Ashley, Mike	#23509 (38.731950 -121.391350)	Vectobac BTI-G
7/19/2012	Ashley, Mike	#23509 (38.731950 -121.391350)	Vectobac BTI-G

9/18/2012	Ashley, Mike	#23509 (38.731950 -121.391350)	Vectobac BTI-G
10/1/2012	Ashley, Mike	#23509 (38.731950 -121.391350)	Vectobac BTI-G
10/11/2012	Ashley, Mike	#23509 (38.731950 -121.391350)	Vectobac BTI-G
11/26/2012	Ashley, Mike	#23509 (38.731950 -121.391350)	Vectobac BTI-G
7/3/2012	Long, Katherine	#23547 (39.304429 -120.385394)	Vectobac BTI-G
7/6/2012	Embrey, Robyn	#23548 (39.303000 -120.389000)	Vectobac BTI-G
7/6/2012	Embrey, Robyn	#23548 (39.303000 -120.389000)	Agnique
7/24/2012	Long, Katherine	#23548 (39.303000 -120.389000)	Vectobac BTI-G
8/8/2012	Embrey, Robyn	#23548 (39.303000 -120.389000)	Vectobac BTI-G
5/30/2012	Embrey, Robyn	#23550 (39.298665 -120.380284)	Vectobac BTI-G
7/26/2012	Embrey, Robyn	#23550 (39.298665 -120.380284)	Agnique
7/26/2012	Embrey, Robyn	#23550 (39.298665 -120.380284)	Vectobac BTI-G
5/17/2012	Embrey, Robyn	#23551 (39.298628 -120.380251)	Vectobac BTI-G
5/30/2012	Long, Katherine	#23552 (39.298838 -120.380920)	Vectobac BTI-G
4/24/2012	Long, Katherine	#23603 (39.226760 -120.202543)	Vectobac BTI-G
5/11/2012	Embrey, Robyn	#23603 (39.226760 -120.202543)	Agnique
7/9/2012	Embrey, Robyn	#23603 (39.226760 -120.202543)	Vectobac BTI-G
8/24/2012	Long, Katherine	#23603 (39.226760 -120.202543)	Vectobac BTI-G
7/25/2012	Embrey, Robyn	#23604 (39.229790 -120.204590)	Vectobac BTI-G
8/24/2012	Long, Katherine	#23604 (39.229790 -120.204590)	Vectobac BTI-G
9/27/2012	Long, Katherine	#23604 (39.229790 -120.204590)	Vectobac BTI-G
3/13/2012	Ortiz-Rodriguez, Everardo	#23711 (38.825513 -121.250006)	Vectobac BTI-G
4/6/2012	Ortiz-Rodriguez, Everardo	#23711 (38.825513 -121.250006)	Vectobac BTI-G
6/18/2012	Ortiz-Rodriguez, Everardo	#23711 (38.825513 -121.250006)	Vectobac BTI-G
7/5/2012	Ortiz-Rodriguez, Everardo	#23711 (38.825513 -121.250006)	Vectobac BTI-G
7/12/2012	Ortiz-Rodriguez, Everardo	#23711 (38.825513 -121.250006)	Vectobac BTI-G
10/9/2012	Ortiz-Rodriguez, Everardo	#23711 (38.825513 -121.250006)	Vectobac BTI-G
6/7/2012	Embrey, Robyn	#23786 (39.303379 -120.339603)	Agnique
6/7/2012	Embrey, Robyn	#23786 (39.303379 -120.339603)	Vectobac BTI-G
6/27/2012	Embrey, Robyn	#23786 (39.303379 -120.339603)	Vectobac BTI-G
7/16/2012	Embrey, Robyn	#23786 (39.303379 -120.339603)	Vectobac BTI-G
7/26/2012	Embrey, Robyn	#23786 (39.303379 -120.339603)	Vectobac BTI-G
5/22/2012	Long, Katherine	#23923 (39.241186 -120.048680)	Vectobac BTI-G
6/5/2012	Long, Katherine	#23923 (39.241186 -120.048680)	Vectobac BTI-G
6/29/2012	Embrey, Robyn	#23923 (39.241186 -120.048680)	Agnique
6/29/2012	Embrey, Robyn	#23923 (39.241186 -120.048680)	Vectobac BTI-G
7/9/2012	Embrey, Robyn	#23923 (39.241186 -120.048680)	Vectobac BTI-G
7/23/2012	Embrey, Robyn	#23923 (39.241186 -120.048680)	Vectobac BTI-G
7/26/2012	Long, Katherine	#23923 (39.241186 -120.048680)	Vectobac BTI-G
8/3/2012	Embrey, Robyn	#23923 (39.241186 -120.048680)	Vectobac BTI-G
8/13/2012	Embrey, Robyn	#23923 (39.241186 -120.048680)	Vectobac BTI-G
9/10/2012	Long, Katherine	#23923 (39.241186 -120.048680)	Vectobac BTI-G
9/20/2012	Long, Katherine	#23923 (39.241186 -120.048680)	Vectobac BTI-G
10/5/2012	Long, Katherine	#23923 (39.241186 -120.048680)	Vectobac BTI-G
5/31/2012	Ashley, Mike	#24096 (38.735356 -121.324832)	Golden Bear 1111
6/7/2012	Ashley, Mike	#24104 (38.775403 -121.339869)	Vectobac BTI-G
11/5/2012	Ortiz-Rodriguez, Everardo	#24131 (38.784314 -121.276231)	Vectobac BTI-G

6/6/2012	Ortiz-Rodriguez, Everardo	#24165 (38.844759 -121.264767)	Vectobac BTI-G
6/29/2012	Ortiz-Rodriguez, Everardo	#24165 (38.844759 -121.264767)	Vectobac BTI-G
7/30/2012	Ortiz-Rodriguez, Everardo	#24165 (38.844759 -121.264767)	Vectobac BTI-G
9/10/2012	Ortiz-Rodriguez, Everardo	#24165 (38.844759 -121.264767)	Vectobac BTI-G
4/10/2012	Geeve, Brent	#24202 (38.941537 -121.082082)	VectoMax CG
7/9/2012	Smith, Jason	#24304 (38.922007 -121.121832)	Vectobac BTI-G
12/19/2012	Smith, Jason	#24312 (38.901354 -121.188788)	Vectobac BTI-G
8/28/2012	Ashley, Mike	#24352 (38.798664 -121.346848)	Vectobac BTI-G
11/7/2012	Ashley, Mike	#24352 (38.798664 -121.346848)	Vectobac BTI-G
12/27/2012	Smith, Jason	#24357 (38.846184 -121.193662)	Vectobac BTI-G
5/7/2012	Ortiz-Rodriguez, Everardo	#24392 (38.877919 -121.297257)	Vectobac BTI-G
5/2/2012	Ashley, Mike	#24442 (38.781120 -121.376009)	Vectobac BTI-G
4/24/2012	Ashley, Mike	#24470 (38.762349 -121.341419)	Vectobac BTI-G
11/19/2012	Ashley, Mike	#24470 (38.762349 -121.341419)	Vectobac BTI-G
4/30/2012	Ortiz-Rodriguez, Everardo	#24501 (38.807978 -121.298500)	Vectobac BTI-G
4/10/2012	Ashley, Mike	#24515 (38.766482 -121.306278)	Vectobac BTI-G
5/14/2012	Ashley, Mike	#24515 (38.766482 -121.306278)	Vectobac BTI-G
5/14/2012	Ashley, Mike	#24515 (38.766482 -121.306278)	Golden Bear 1111
4/3/2012	Smith, Jason	#24588 (38.992310 -121.271780)	Vectobac BTI-G
4/27/2012	Long, Katherine	#24710 (39.205555 -120.216179)	Vectobac BTI-G
7/3/2012	Embrey, Robyn	#24774 (39.189358 -120.197242)	Vectobac BTI-G
7/18/2012	Embrey, Robyn	#24774 (39.189358 -120.197242)	Vectobac BTI-G
8/6/2012	Long, Katherine	#24774 (39.189358 -120.197242)	Vectobac BTI-G
8/29/2012	Embrey, Robyn	#24774 (39.189358 -120.197242)	Vectobac BTI-G
5/7/2012	Geeve, Brent	#24776 (39.315288 -120.614305)	VectoMax CG
10/9/2012	Ashley, Mike	#24821 (38.792092 -121.306014)	Vectobac BTI-G
4/23/2012	Long, Katherine	#24894 (39.204607 -120.202339)	Vectobac BTI-G
5/11/2012	Embrey, Robyn	#24894 (39.204607 -120.202339)	Vectobac BTI-G
10/15/2012	Ashley, Mike	#24898 (38.804660 -121.311820)	Vectobac BTI-G
5/31/2012	Embrey, Robyn	#24926 (39.313978 -120.469468)	Vectobac BTI-G
5/29/2012	Long, Katherine	#24975 (39.304241 -120.385097)	Vectobac BTI-G
6/11/2012	Long, Katherine	#25058 (39.305026 -120.381930)	Vectobac BTI-G
6/11/2012	Long, Katherine	#25058 (39.305026 -120.381930)	Agnique
5/29/2012	Long, Katherine	#25076 (39.302547 -120.382741)	Vectobac BTI-G
6/7/2012	Embrey, Robyn	#25076 (39.302547 -120.382741)	Vectobac BTI-G
6/7/2012	Embrey, Robyn	#25076 (39.302547 -120.382741)	Agnique
6/11/2012	Long, Katherine	#25076 (39.302547 -120.382741)	Vectobac BTI-G
6/11/2012	Long, Katherine	#25076 (39.302547 -120.382741)	Agnique
7/6/2012	Embrey, Robyn	#25076 (39.302547 -120.382741)	Vectobac BTI-G
6/15/2012	Long, Katherine	#25083 (39.237787 -120.029800)	Vectobac BTI-G
7/10/2012	Embrey, Robyn	#25083 (39.237787 -120.029800)	Vectobac BTI-G
7/10/2012	Embrey, Robyn	#25083 (39.237787 -120.029800)	Agnique
6/21/2012	Ashley, Mike	#25204 (38.734550 -121.341390)	Vectobac BTI-G
9/7/2012	Long, Katherine	#25261 (39.107394 -120.160426)	Vectobac BTI-G
7/12/2012	Long, Katherine	#25364 (39.274125 -120.365610)	Vectobac BTI-G
7/12/2012	Long, Katherine	#25364 (39.274125 -120.365610)	Vectobac BTI-G
3/5/2012	Smith, Jason	#25409 (38.848611 -121.190835)	Vectobac BTI-G

12/27/2012	Smith, Jason	#25409 (38.848611 -121.190835)	Vectobac BTI-G
7/13/2012	Embrey, Robyn	#25421 (39.197889 -120.235845)	Vectobac BTI-G
7/11/2012	Embrey, Robyn	#25476 (39.111182 -120.184894)	Vectobac BTI-G
7/11/2012	Embrey, Robyn	#25476 (39.111182 -120.184894)	Vectobac BTI-G
7/23/2012	Long, Katherine	#25476 (39.111182 -120.184894)	Vectobac BTI-G
9/11/2012	Long, Katherine	#25476 (39.111182 -120.184894)	Vectobac BTI-G
9/26/2012	Embrey, Robyn	#25476 (39.111182 -120.184894)	Vectobac BTI-G
8/10/2012	Long, Katherine	#25529 (39.076601 -120.155057)	Vectobac BTI-G
8/22/2012	Embrey, Robyn	#25529 (39.076601 -120.155057)	Vectobac BTI-G
9/4/2012	Embrey, Robyn	#25529 (39.076601 -120.155057)	Vectobac BTI-G
9/7/2012	Long, Katherine	#25529 (39.076601 -120.155057)	Vectobac BTI-G
9/17/2012	Long, Katherine	#25529 (39.076601 -120.155057)	Vectobac BTI-G
10/8/2012	Long, Katherine	#25529 (39.076601 -120.155057)	Vectobac BTI-G
12/10/2012	Smith, Jason	#25681 (38.936905 -121.208746)	Vectobac BTI-G
11/5/2012	Ortiz-Rodriguez, Everardo	#25730 (38.791991 -121.292099)	Vectobac BTI-G
4/24/2012	Ashley, Mike	#25757 (38.758518 -121.330369)	Vectobac BTI-G
4/2/2012	Smith, Jason	#25811 (38.820422 -121.203071)	Vectobac BTI-G
12/10/2012	Smith, Jason	#25811 (38.820422 -121.203071)	Vectobac BTI-G
5/7/2012	Ashley, Mike	#25937 (38.772538 -121.283333)	Vectobac BTI-G
11/6/2012	Ashley, Mike	#25937 (38.772538 -121.283333)	Vectobac BTI-G
11/26/2012	Geeve, Brent	#25947 (38.988676 -121.057159)	VectoMax CG
3/29/2012	Ortiz-Rodriguez, Everardo	#26066 (38.833406 -121.280855)	Vectobac BTI-G
10/3/2012	Smith, Jason	#26128 (38.893620 -121.126950)	Vectobac BTI-G
12/12/2012	Geeve, Brent	#26285 (38.983437 -121.029513)	VectoMax CG
7/27/2012	Smith, Jason	#26312 (38.933734 -121.192203)	Vectobac BTI-G
3/23/2012	Ortiz-Rodriguez, Everardo	#26431 (38.810251 -121.292978)	Vectobac BTI-G
6/7/2012	Ortiz-Rodriguez, Everardo	#26431 (38.810251 -121.292978)	Vectobac BTI-G
6/19/2012	Ortiz-Rodriguez, Everardo	#26431 (38.810251 -121.292978)	Vectobac BTI-G
6/26/2012	Ortiz-Rodriguez, Everardo	#26431 (38.810251 -121.292978)	Vectobac BTI-G
7/5/2012	Ortiz-Rodriguez, Everardo	#26431 (38.810251 -121.292978)	Vectobac BTI-G
7/12/2012	Ortiz-Rodriguez, Everardo	#26431 (38.810251 -121.292978)	Vectobac BTI-G
7/23/2012	Ortiz-Rodriguez, Everardo	#26431 (38.810251 -121.292978)	Vectobac BTI-G
4/23/2012	Long, Katherine	#26465 (39.209267 -120.201781)	Vectobac BTI-G
5/18/2012	Long, Katherine	#26465 (39.209267 -120.201781)	Vectobac BTI-G
5/18/2012	Long, Katherine	#26465 (39.209267 -120.201781)	Agnique
6/29/2012	Long, Katherine	#26465 (39.209267 -120.201781)	Vectobac BTI-G
7/19/2012	Long, Katherine	#26465 (39.209267 -120.201781)	Vectobac BTI-G
8/6/2012	Long, Katherine	#26465 (39.209267 -120.201781)	Vectobac BTI-G
9/27/2012	Long, Katherine	#26465 (39.209267 -120.201781)	Vectobac BTI-G
10/4/2012	Smith, Jason	#26487 (38.937840 -121.245933)	Vectobac BTI-G
5/2/2012	Long, Katherine	#26504 (39.282497 -120.156012)	Vectobac BTI-G
7/16/2012	Goss, George	#26532 (38.837903 -121.403990)	Vectobac BTI-G
7/30/2012	Goss, George	#26532 (38.837903 -121.403990)	Vectobac BTI-G
8/7/2012	Goss, George	#26532 (38.837903 -121.403990)	Vectobac BTI-G
8/13/2012	Goss, George	#26532 (38.837903 -121.403990)	Vectobac BTI-G
8/16/2012	Goss, George	#26532 (38.837903 -121.403990)	Vectobac BTI-G
8/27/2012	Goss, George	#26532 (38.837903 -121.403990)	Vectobac BTI-G

9/14/2012	Goss, George	#26532 (38.837903 -121.403990)	Vectobac BTI-G
10/1/2012	Goss, George	#26532 (38.837903 -121.403990)	Vectobac BTI-G
4/9/2012	Geeve, Brent	#26583 (38.980889 -121.048900)	VectoMax CG
11/9/2012	Ortiz-Rodriguez, Everardo	#26583 (38.980889 -121.048900)	Vectobac BTI-G
4/30/2012	Long, Katherine	#26611 (39.313596 -120.328113)	Vectobac BTI-G
5/10/2012	Long, Katherine	#26611 (39.313596 -120.328113)	Vectobac BTI-G
5/17/2012	Embrey, Robyn	#26611 (39.313596 -120.328113)	Vectobac BTI-G
8/16/2012	Goss, George	#26684 (38.843526 -121.403176)	Vectobac BTI-G
4/30/2012	Long, Katherine	#26709 (39.314553 -120.328236)	Vectobac BTI-G
5/10/2012	Long, Katherine	#26709 (39.314553 -120.328236)	Vectobac BTI-G
6/13/2012	Ashley, Mike	#26744 (38.809280 -121.356490)	Vectobac BTI-G
6/22/2012	Ashley, Mike	#26744 (38.809280 -121.356490)	Vectobac BTI-G
7/10/2012	Ashley, Mike	#26744 (38.809280 -121.356490)	Golden Bear 1111
7/19/2012	Ashley, Mike	#26744 (38.809280 -121.356490)	Vectobac BTI-G
8/9/2012	Ashley, Mike	#26744 (38.809280 -121.356490)	Vectobac BTI-G
4/30/2012	Long, Katherine	#26747 (39.309091 -120.338520)	Vectobac BTI-G
6/7/2012	Embrey, Robyn	#26749 (39.308227 -120.337737)	Vectobac BTI-G
6/7/2012	Embrey, Robyn	#26749 (39.308227 -120.337737)	Agnique
4/30/2012	Long, Katherine	#26750 (39.308169 -120.336739)	Vectobac BTI-G
5/10/2012	Long, Katherine	#26750 (39.308169 -120.336739)	Vectobac BTI-G
5/17/2012	Embrey, Robyn	#26750 (39.308169 -120.336739)	Vectobac BTI-G
4/30/2012	Long, Katherine	#26761 (39.274075 -120.174090)	Vectobac BTI-G
5/23/2012	Long, Katherine	#26773 (39.311077 -120.389763)	Vectobac BTI-G
5/24/2012	Long, Katherine	#26775 (39.311548 -120.388860)	Vectobac BTI-G
5/31/2012	Embrey, Robyn	#26776 (39.304048 -120.389267)	Vectobac BTI-G
5/31/2012	Embrey, Robyn	#26777 (39.305496 -120.388184)	Vectobac BTI-G
7/26/2012	Embrey, Robyn	#26777 (39.305496 -120.388184)	Vectobac BTI-G
8/1/2012	Long, Katherine	#26787 (39.311332 -120.389391)	Agnique
7/10/2012	Goss, George	#26862 (38.844822 -121.404719)	Vectobac BTI-G
8/20/2012	Goss, George	#26862 (38.844822 -121.404719)	Vectobac BTI-G
9/13/2012	Ortiz-Rodriguez, Everardo	#26864 (38.828114 -121.287194)	Vectobac BTI-G
7/11/2012	Embrey, Robyn	#26938 (39.102013 -120.202495)	Vectobac BTI-G
6/21/2012	Long, Katherine	#26991 (39.168146 -120.237111)	Vectobac BTI-G
5/14/2012	Long, Katherine	#26992 (39.167235 -120.236081)	Vectobac BTI-G
6/6/2012	Embrey, Robyn	#26992 (39.167235 -120.236081)	Agnique
6/6/2012	Embrey, Robyn	#26992 (39.167235 -120.236081)	Vectobac BTI-G
6/21/2012	Long, Katherine	#26992 (39.167235 -120.236081)	Vectobac BTI-G
7/3/2012	Embrey, Robyn	#26992 (39.167235 -120.236081)	Vectobac BTI-G
7/9/2012	Embrey, Robyn	#26992 (39.167235 -120.236081)	Vectobac BTI-G
7/25/2012	Embrey, Robyn	#27013 (39.204058 -120.212853)	Vectobac BTI-G
6/7/2012	Ashley, Mike	#27169 (38.766273 -121.370376)	Vectobac BTI-G
10/2/2012	Ashley, Mike	#27169 (38.766273 -121.370376)	Vectobac BTI-G
6/19/2012	Ortiz-Rodriguez, Everardo	#27175 (38.807256 -121.226961)	Vectobac BTI-G
8/15/2012	Ortiz-Rodriguez, Everardo	#27207 (38.811966 -121.314313)	Vectobac BTI-G
8/20/2012	Ortiz-Rodriguez, Everardo	#27207 (38.811966 -121.314313)	Vectobac BTI-G
9/13/2012	Ortiz-Rodriguez, Everardo	#27207 (38.811966 -121.314313)	Vectobac BTI-G
8/15/2012	Ortiz-Rodriguez, Everardo	#27208 (38.823853 -121.301442)	Vectobac BTI-G

3/12/2012	Ortiz-Rodriguez, Everardo	#27487 (38.878151 -121.246303)	Vectobac BTI-G
4/3/2012	Ortiz-Rodriguez, Everardo	#27556 (38.811799 -121.269279)	Vectobac BTI-G
4/23/2012	Ortiz-Rodriguez, Everardo	#27603 (38.767279 -121.252073)	Vectobac BTI-G
4/23/2012	Ortiz-Rodriguez, Everardo	#27603 (38.767279 -121.252073)	Golden Bear 1111
7/6/2012	Ortiz-Rodriguez, Everardo	#30030 (38.897572 -121.311747)	Anvil 10 10
8/10/2012	Ortiz-Rodriguez, Everardo	#30030 (38.897572 -121.311747)	Anvil 10 10
8/17/2012	Ortiz-Rodriguez, Everardo	#30030 (38.897572 -121.311747)	Anvil 10 10
8/24/2012	Goss, George	#30030 (38.897572 -121.311747)	Zenivex E4
8/31/2012	Ortiz-Rodriguez, Everardo	#30030 (38.897572 -121.311747)	Zenivex E4
9/7/2012	Ortiz-Rodriguez, Everardo	#30030 (38.897572 -121.311747)	Zenivex E4
9/28/2012	Ortiz-Rodriguez, Everardo	#30030 (38.897572 -121.311747)	Zenivex E4
9/14/2012	Goss, George	#30058 (38.977172 -121.387612)	Anvil 10 10
5/2/2012	Ghilarducci, Brian	#30208 (38.726634 -121.223870)	Pyrocide 7396
6/6/2012	Ghilarducci, Brian	#30208 (38.726634 -121.223870)	Zenivex E4
7/6/2012	Ashley, Mike	#30396 (38.733598 -121.355549)	Zenivex E4
7/6/2012	Smith, Jason	#30396 (38.733598 -121.355549)	Anvil 10 10
7/27/2012	Ortiz-Rodriguez, Everardo	#30525 (38.900170 -121.323937)	Anvil 10 10
7/27/2012	Ghilarducci, Brian	#30525 (38.900170 -121.323937)	Anvil 10 10
5/2/2012	Ghilarducci, Brian	#30538 (38.868741 -121.084877)	Pyrocide 7396
5/16/2012	Ghilarducci, Brian	#30573 (38.786321 -121.153833)	Zenivex E4
5/30/2012	Ghilarducci, Brian	#30578 (38.756776 -121.221625)	Zenivex E4
6/12/2012	Ghilarducci, Brian	#30586 (38.751009 -121.178821)	Zenivex E4
6/12/2012	Ghilarducci, Brian	#30587 (38.801397 -121.128632)	Zenivex E4
7/12/2012	Ashley, Mike	#98961 (38.791318 -121.299035)	Vectobac BTI-G
7/12/2012	Ashley, Mike	#99014 (38.790636 -121.297840)	Vectobac BTI-G
7/16/2012	Ashley, Mike	#99014 (38.790636 -121.297840)	Vectobac BTI-G
7/20/2012	Ashley, Mike	#99014 (38.790636 -121.297840)	Vectobac BTI-G
7/24/2012	Ashley, Mike	#99014 (38.790636 -121.297840)	Vectobac BTI-G
8/1/2012	Ashley, Mike	#99014 (38.790636 -121.297840)	Vectobac BTI-G
7/12/2012	Ashley, Mike	#99015 (38.790503 -121.297583)	Vectobac BTI-G
7/16/2012	Ashley, Mike	#99015 (38.790503 -121.297583)	Vectobac BTI-G
7/20/2012	Ashley, Mike	#99015 (38.790503 -121.297583)	Vectobac BTI-G
7/24/2012	Ashley, Mike	#99015 (38.790503 -121.297583)	Vectobac BTI-G
4/26/2012	Ortiz-Rodriguez, Everardo	#150063 (38.877915 -121.296551)	Vectobac BTI-G
6/7/2012	Embrey, Robyn	#150133 (39.311125 -120.333644)	Vectobac BTI-G
6/20/2012	Ashley, Mike	#150135 (38.787375 -121.364808)	Vectobac BTI-G
7/10/2012	Ashley, Mike	#150135 (38.787375 -121.364808)	Vectobac BTI-G
8/1/2012	Ashley, Mike	#150135 (38.787375 -121.364808)	Vectobac BTI-G
9/14/2012	Ashley, Mike	#150135 (38.787375 -121.364808)	Vectobac BTI-G
9/26/2012	Ashley, Mike	#150135 (38.787375 -121.364808)	Vectobac BTI-G
10/15/2012	Ashley, Mike	#150135 (38.787375 -121.364808)	Vectobac BTI-G
11/8/2012	Doe, Johnny	#150148 (38.739712 -121.235075)	Agnique
5/1/2012	Geeve, Brent	#150153 (39.313486 -120.593394)	VectoMax CG
5/1/2012	Geeve, Brent	#150170 (39.315925 -120.597863)	VectoMax CG
5/7/2012	Smith, Jason	#150190 (38.861650 -121.172034)	Vectobac BTI-G
5/7/2012	Smith, Jason	#150191 (38.862104 -121.169575)	Vectobac BTI-G
5/8/2012	Geeve, Brent	#150192 (39.315931 -120.597836)	VectoMax CG

5/10/2012	Long, Katherine	#150209 (39.314683 -120.329878)	Vectobac BTI-G
5/17/2012	Embrey, Robyn	#150209 (39.314683 -120.329878)	Vectobac BTI-G
5/10/2012	Smith, Jason	#150215 (38.935995 -121.208253)	Vectobac BTI-G
5/11/2012	Embrey, Robyn	#150219 (39.184901 -120.209248)	Vectobac BTI-G
5/11/2012	Ortiz-Rodriguez, Everardo	#150220 (38.809646 -121.317511)	Vectobac BTI-G
5/11/2012	Ortiz-Rodriguez, Everardo	#150220 (38.809646 -121.317511)	Golden Bear 1111
5/15/2012	Ortiz-Rodriguez, Everardo	#150244 (38.807165 -121.273296)	Vectobac BTI-G
5/18/2012	Ortiz-Rodriguez, Everardo	#150255 (38.808037 -121.319822)	Vectobac BTI-G
5/22/2012	Ortiz-Rodriguez, Everardo	#150277 (38.833816 -121.282271)	Vectobac BTI-G
5/30/2012	Ortiz-Rodriguez, Everardo	#150277 (38.833816 -121.282271)	Vectobac BTI-G
5/29/2012	Ashley, Mike	#150343 (38.763462 -121.312172)	Vectobac BTI-G
5/29/2012	Embrey, Robyn	#150346 (39.104189 -120.159895)	Vectobac BTI-G
7/2/2012	Embrey, Robyn	#150346 (39.104189 -120.159895)	Agnique
7/2/2012	Embrey, Robyn	#150346 (39.104189 -120.159895)	Vectobac BTI-G
7/20/2012	Long, Katherine	#150346 (39.104189 -120.159895)	Vectobac BTI-G
7/31/2012	Embrey, Robyn	#150346 (39.104189 -120.159895)	Vectobac BTI-G
5/31/2012	Ghilarducci, Brian	#150360 (38.759714 -121.165434)	Vectobac BTI-G
5/30/2012	Long, Katherine	#150365 (39.298746 -120.379370)	Vectobac BTI-G
5/31/2012	Embrey, Robyn	#150366 (39.311785 -120.389058)	Vectobac BTI-G
6/4/2012	Smith, Jason	#150384 (38.829351 -121.212134)	Vectobac BTI-G
6/4/2012	Ortiz-Rodriguez, Everardo	#150386 (38.816685 -121.255224)	Vectobac BTI-G
5/2/2012	Ghilarducci, Brian	#150586 (38.758606 -121.209755)	Pyrocide 7396
6/28/2012	Goss, George	#150589 (38.888477 -121.412487)	Dragnet SFR
7/6/2012	Ghilarducci, Brian	#150589 (38.888477 -121.412487)	Anvil 10 10
7/6/2012	Ortiz-Rodriguez, Everardo	#150621 (38.863541 -121.233105)	Vectobac BTI-G
8/3/2012	Ashley, Mike	#150644 (38.733557 -121.355603)	Anvil 10 10
8/10/2012	Williams, Ted	#150644 (38.733557 -121.355603)	Anvil 10 10
8/10/2012	Smith, Jason	#150644 (38.733557 -121.355603)	Anvil 10 10
8/17/2012	Ghilarducci, Brian	#150644 (38.733557 -121.355603)	Zenivex E4
8/31/2012	Smith, Jason	#150644 (38.733557 -121.355603)	Zenivex E4
8/31/2012	Williams, Ted	#150644 (38.733557 -121.355603)	Zenivex E4
7/12/2012	Long, Katherine	#150647 (39.247509 -120.352006)	Vectobac BTI-G
7/13/2012	Ashley, Mike	#150651 (38.793166 -121.296245)	Vectobac BTI-G
7/16/2012	Ashley, Mike	#150651 (38.793166 -121.296245)	Vectobac BTI-G
7/20/2012	Ashley, Mike	#150651 (38.793166 -121.296245)	Vectobac BTI-G
7/26/2012	Ashley, Mike	#150651 (38.793166 -121.296245)	Vectobac BTI-G
7/13/2012	Embrey, Robyn	#150652 (39.200234 -120.242314)	Vectobac BTI-G
7/13/2012	Embrey, Robyn	#150652 (39.200234 -120.242314)	Vectobac BTI-G
7/25/2012	Embrey, Robyn	#150652 (39.200234 -120.242314)	Vectobac BTI-G
8/14/2012	Embrey, Robyn	#150652 (39.200234 -120.242314)	Vectobac BTI-G
8/23/2012	Long, Katherine	#150652 (39.200234 -120.242314)	Vectobac BTI-G
9/6/2012	Long, Katherine	#150652 (39.200234 -120.242314)	Vectobac BTI-G
9/27/2012	Long, Katherine	#150652 (39.200234 -120.242314)	Vectobac BTI-G
10/4/2012	Long, Katherine	#150652 (39.200234 -120.242314)	Vectobac BTI-G
7/16/2012	Embrey, Robyn	#150654 (39.306928 -120.335682)	Vectobac BTI-G
7/16/2012	Embrey, Robyn	#150656 (39.312835 -120.395372)	Vectobac BTI-G
7/16/2012	Embrey, Robyn	#150656 (39.312835 -120.395372)	Agnique

7/16/2012	Embrey, Robyn	#150656 (39.312835 -120.395372)	Vectobac BTI-G
7/20/2012	Ortiz-Rodriguez, Everardo	#150659 (38.896124 -121.303865)	Zenivex E4
8/3/2012	Ortiz-Rodriguez, Everardo	#150659 (38.896124 -121.303865)	Anvil 10 10
7/18/2012	Embrey, Robyn	#150668 (39.166104 -120.237637)	Vectobac BTI-G
7/19/2012	Long, Katherine	#150678 (39.188743 -120.196341)	Vectobac BTI-G
8/16/2012	Embrey, Robyn	#150678 (39.188743 -120.196341)	Vectobac BTI-G
8/29/2012	Embrey, Robyn	#150678 (39.188743 -120.196341)	Vectobac BTI-G
9/12/2012	Long, Katherine	#150678 (39.188743 -120.196341)	Vectobac BTI-G
7/23/2012	Long, Katherine	#150686 (39.111049 -120.186996)	Vectobac BTI-G
8/1/2012	Embrey, Robyn	#150686 (39.111049 -120.186996)	Vectobac BTI-G
7/25/2012	Embrey, Robyn	#150699 (39.174480 -120.233989)	Vectobac BTI-G
8/7/2012	Embrey, Robyn	#150699 (39.174480 -120.233989)	Vectobac BTI-G
8/29/2012	Embrey, Robyn	#150699 (39.174480 -120.233989)	Vectobac BTI-G
8/7/2012	Embrey, Robyn	#150701 (39.174522 -120.233581)	Vectobac BTI-G
8/16/2012	Embrey, Robyn	#150701 (39.174522 -120.233581)	Vectobac BTI-G
8/29/2012	Embrey, Robyn	#150701 (39.174522 -120.233581)	Vectobac BTI-G
9/12/2012	Long, Katherine	#150701 (39.174522 -120.233581)	Vectobac BTI-G
7/25/2012	Embrey, Robyn	#150703 (39.174306 -120.235158)	Vectobac BTI-G
8/7/2012	Embrey, Robyn	#150703 (39.174306 -120.235158)	Vectobac BTI-G
8/16/2012	Embrey, Robyn	#150703 (39.174306 -120.235158)	Vectobac BTI-G
8/29/2012	Embrey, Robyn	#150703 (39.174306 -120.235158)	Vectobac BTI-G
9/28/2012	Long, Katherine	#150703 (39.174306 -120.235158)	Vectobac BTI-G
8/17/2012	Smith, Jason	#150707 (38.730795 -121.391512)	Anvil 10 10
10/1/2012	Ashley, Mike	#150707 (38.730795 -121.391512)	Suspend SC
7/27/2012	Goss, George	#150708 (38.988385 -121.382425)	Anvil 10 10
8/24/2012	Goss, George	#150708 (38.988385 -121.382425)	Zenivex E4
8/31/2012	Crosby, Steve	#150708 (38.988385 -121.382425)	Anvil 10 10
8/10/2012	Goss, George	#150709 (38.977160 -121.387779)	Anvil 10 10
7/30/2012	Long, Katherine	#150723 (39.315507 -120.464573)	Vectobac BTI-G
8/17/2012	Long, Katherine	#150723 (39.315507 -120.464573)	Vectobac BTI-G
7/30/2012	Long, Katherine	#150724 (39.309680 -120.542271)	Vectobac BTI-G
8/1/2012	Embrey, Robyn	#150739 (39.102557 -120.202661)	Vectobac BTI-G
9/11/2012	Long, Katherine	#150739 (39.102557 -120.202661)	Vectobac BTI-G
8/3/2012	Ghilarducci, Brian	#150743 (38.787743 -121.371632)	Anvil 10 10
8/10/2012	Ashley, Mike	#150743 (38.787743 -121.371632)	Anvil 10 10
8/17/2012	Smith, Jason	#150743 (38.787743 -121.371632)	Anvil 10 10
8/31/2012	Smith, Jason	#150743 (38.787743 -121.371632)	Zenivex E4
8/31/2012	Ashley, Mike	#150743 (38.787743 -121.371632)	Zenivex E4
9/7/2012	Ghilarducci, Brian	#150743 (38.787743 -121.371632)	Zenivex E4
9/14/2012	Ashley, Mike	#150743 (38.787743 -121.371632)	Dragnet SFR
8/3/2012	Ghilarducci, Brian	#150745 (38.734050 -121.320326)	Anvil 10 10
8/3/2012	Ashley, Mike	#150745 (38.734050 -121.320326)	Anvil 10 10
8/3/2012	Goss, George	#150747 (38.870454 -121.319361)	Anvil 10 10
8/3/2012	Goss, George	#150747 (38.870454 -121.319361)	Anvil 10 10
8/17/2012	Williams, Ted	#150747 (38.870454 -121.319361)	Anvil 10 10
8/24/2012	Geeve, Brent	#150747 (38.870454 -121.319361)	Zenivex E4
8/31/2012	Williams, Ted	#150747 (38.870454 -121.319361)	Zenivex E4

8/31/2012	Schon, Scott	#150747 (38.870454 -121.319361)	Zenivex E4
9/7/2012	Geeve, Brent	#150747 (38.870454 -121.319361)	Zenivex E4
8/2/2012	Embrey, Robyn	#150757 (39.139814 -120.192318)	Vectobac BTI-G
8/15/2012	Embrey, Robyn	#150757 (39.139814 -120.192318)	Vectobac BTI-G
8/28/2012	Embrey, Robyn	#150757 (39.139814 -120.192318)	Vectobac BTI-G
10/10/2012	Embrey, Robyn	#150757 (39.139814 -120.192318)	Vectobac BTI-G
8/3/2012	Smith, Jason	#150774 (38.974003 -121.289870)	Vectobac BTI-G
8/10/2012	Goss, George	#150838 (38.900882 -121.318167)	Anvil 10 10
8/10/2012	Smith, Jason	#150838 (38.900882 -121.318167)	Anvil 10 10
9/14/2012	Goss, George	#150838 (38.900882 -121.318167)	Anvil 10 10
8/9/2012	Long, Katherine	#150863 (39.248224 -120.035055)	Vectobac BTI-G
9/28/2012	Ashley, Mike	#150874 (38.768531 -121.376857)	Zenivex E4
8/17/2012	Williams, Ted	#150876 (39.021451 -121.354637)	Anvil 10 10
8/24/2012	Ghilarducci, Brian	#150877 (38.900452 -121.323352)	Zenivex E4
8/31/2012	Crosby, Steve	#150877 (38.900452 -121.323352)	Anvil 10 10
9/28/2012	Geeve, Brent	#150877 (38.900452 -121.323352)	Zenivex E4
8/16/2012	Smith, Jason	#150912 (38.966616 -121.276102)	Vectobac BTI-G
8/17/2012	Ashley, Mike	#150917 (38.767670 -121.377211)	Anvil 10 10
9/14/2012	Ashley, Mike	#150917 (38.767670 -121.377211)	Zenivex E4
8/23/2012	Long, Katherine	#150989 (39.210028 -120.201641)	Vectobac BTI-G
9/6/2012	Long, Katherine	#150989 (39.210028 -120.201641)	Vectobac BTI-G
10/4/2012	Long, Katherine	#150989 (39.210028 -120.201641)	Vectobac BTI-G
8/23/2012	Long, Katherine	#150992 (39.207197 -120.205895)	Vectobac BTI-G
8/23/2012	Geeve, Brent	#150993 (38.930037 -121.084142)	VectoMax CG
9/19/2012	Long, Katherine	#151051 (39.165921 -120.146320)	Vectobac BTI-G
9/10/2012	Ortiz-Rodriguez, Everardo	#151081 (38.884795 -121.309321)	Vectobac BTI-G
9/24/2012	Ortiz-Rodriguez, Everardo	#151081 (38.884795 -121.309321)	Vectobac BTI-G
9/10/2012	Geeve, Brent	#151084 (38.990237 -121.135168)	VectoMax CG
10/16/2012	Ashley, Mike	#151100 (38.780509 -121.386234)	Vectobac BTI-G
9/13/2012	Ashley, Mike	#151105 (38.793589 -121.378423)	Vectobac BTI-G
9/26/2012	Ashley, Mike	#151105 (38.793589 -121.378423)	Vectobac BTI-G
10/10/2012	Ashley, Mike	#151105 (38.793589 -121.378423)	Vectobac BTI-G
9/13/2012	Ashley, Mike	#151106 (38.793664 -121.307387)	Vectobac BTI-G
9/20/2012	Ashley, Mike	#151106 (38.793664 -121.307387)	Vectobac BTI-G
10/1/2012	Ashley, Mike	#151106 (38.793664 -121.307387)	Vectobac BTI-G
10/9/2012	Ashley, Mike	#151106 (38.793664 -121.307387)	Vectobac BTI-G
11/1/2012	Ashley, Mike	#151106 (38.793664 -121.307387)	Vectobac BTI-G
9/17/2012	Ashley, Mike	#151116 (38.721621 -121.244709)	Golden Bear 1111
9/19/2012	Ashley, Mike	#151116 (38.721621 -121.244709)	Vectobac BTI-G
10/2/2012	Ashley, Mike	#151116 (38.721621 -121.244709)	Vectobac BTI-G
10/8/2012	Ashley, Mike	#151116 (38.721621 -121.244709)	Vectobac BTI-G
10/18/2012	Ashley, Mike	#151116 (38.721621 -121.244709)	Vectobac BTI-G
11/8/2012	Ashley, Mike	#151116 (38.721621 -121.244709)	Vectobac BTI-G
9/25/2012	Embrey, Robyn	#151162 (39.137758 -120.186508)	Vectobac BTI-G
9/26/2012	Ashley, Mike	#151171 (38.769511 -121.299195)	Vectobac BTI-G
10/1/2012	Ashley, Mike	#151171 (38.769511 -121.299195)	Vectobac BTI-G
10/1/2012	Ortiz-Rodriguez, Everardo	#151180 (38.800102 -121.251646)	Vectobac BTI-G

10/4/2012	Smith, Jason	#151212 (38.862764 -121.215184)	Vectobac BTI-G
11/7/2012	Goss, George	#151306 (38.974036 -121.370553)	Vectobac BTI-G
11/20/2012	Smith, Jason	#151318 (38.900521 -121.102110)	Vectobac BTI-G
5/22/2012	Ghilarducci, Brian	#151408 (38.795955 -121.132389)	Zenivex E4
5/18/2012	Geeve, Brent	#151415 (38.968752 -121.021598)	Pyrocide 7396
5/18/2012	Geeve, Brent	#151416 (38.968468 -121.022193)	Pyrocide 7396
6/6/2012	Ghilarducci, Brian	#151417 (38.812702 -121.120421)	Zenivex E4
5/11/2012	Smith, Jason	#151420 (38.907473 -121.262428)	Pyrocide 7396
5/11/2012	Smith, Jason	#151421 (38.817793 -121.211332)	Pyrocide 7396
5/7/2012	Smith, Jason	#151422 (38.892628 -121.245975)	Pyrocide 7396
5/11/2012	Smith, Jason	#151422 (38.892628 -121.245975)	Pyrocide 7396
5/29/2012	Geeve, Brent	#151423 (39.007363 -121.046247)	Pyrocide 7396
5/18/2012	Smith, Jason	#151427 (38.891359 -121.239935)	Pyrocide 7396
5/18/2012	Smith, Jason	#151429 (38.907048 -121.259000)	Zenivex E4
5/18/2012	Smith, Jason	#151431 (38.892536 -121.263431)	Zenivex E4
6/15/2012	Smith, Jason	#151433 (38.896252 -121.183598)	Zenivex E4
5/30/2012	Geeve, Brent	#151434 (38.974595 -121.025503)	Pyrocide 7396
6/12/2012	Geeve, Brent	#151439 (38.989603 -121.022483)	Pyrocide 7396
6/13/2012	Geeve, Brent	#151441 (39.007725 -121.044413)	Pyrocide 7396
6/20/2012	Geeve, Brent	#151442 (39.217476 -120.791223)	Pyrocide 7396

Amount	Units	Acres	Application Description	NPDESWaterUID
0.1600	LB	0.01600	Applied to Wetland	102954
4.1300	lb	0.41300	Applied to Wetland	102982
0.5000	LB	0.05000	Applied to Low Area	107034
0.2000	lb	0.02000	Applied to Wetland	102963
0.0910	LB	0.00910	Applied to Wetland	102963
20.0000	LB	2.00000	Applied to Ditch	106251
0.0400	lb	0.00400	Applied to Low Area	100596
5.0000	LB	0.50000	Applied to Field: Non-Rice Irrigated	106959
15.0000	LB	1.50000	Applied to Field: Non-Rice Irrigated	106972
25.0000	LB	2.50000	Applied to Field: Non-Rice Irrigated	106972
10.0000	LB	1.00000	Applied to Field: Non-Rice Irrigated	106972
20.0000	LB	2.00000	Applied to Field: Non-Rice Irrigated	106251
25.0000	LB	2.50000	Applied to Field: Non-Rice Irrigated	106251
15.0000	LB	1.50000	Applied to Field: Non-Rice Irrigated	106251
15.0000	LB	1.50000	Applied to Field: Non-Rice Irrigated	106251
12.0000	LB	1.20000	Applied to Field: Non-Rice Irrigated	106972
1.0000	LB	0.10000	Applied to Low Area	107099
3.2000	LB	0.32000	Applied to Low Area	102962
0.0910	GAL	0.01800	Applied to Low Area	102962
1.1000	lb	0.11000	Applied to Low Area	105902
6.8800	lb	0.68800	Applied to Low Area	102970
0.0130	LB	0.00130	Applied to Low Area	102970
6.8000	LB	0.68000	Applied to Low Area	102970
4.0000	LB	0.40000	Applied to Low Area	102970
0.0100	lb	0.00100	Applied to Low Area	102962
6.0000	LB	0.60000	Applied to Low Area	102962
0.5000	LB	0.05000	Applied to Pond	103993
10.0000	LB	1.00000	Applied to Ditch	106422
5.0000	LB	0.50000	Applied to Ditch	106422
1.5000	LB	0.15000	Applied to Low Area	106965
1.0000	lb	0.10000	Applied to Wetland	105495
1.5000	lb	0.15000	Applied to Low Area	105495
0.5000	LB	0.05000	Applied to Low Area	105495
1.0000	lb	0.10000	Applied to Low Area	105658
6.0000	lb	0.60000	Applied to Wetland	110485
10.0000	LB	1.00000	Applied to Low Area	107204
2.5000	LB	0.25000	Applied to Low Area	210814
0.0500	LB	0.01100	Applied to Low Area	210814
1.0000	LB	0.10000	Applied to Low Area	105476
0.0220	LB	0.00400	Applied to Ditch	210955
2.0000	lb	0.20000	Applied to Ditch	106248
0.0870	LB	0.00870	Applied to Low Area	101066
1.5000	lb	0.15000	Applied to Ditch	105282
5.0000	LB	0.50000	Applied to Low Area	105495
3.0000	LB	0.30000	Applied to Low Area	105495
0.5000	LB	0.05000	Applied to Low Area	107035

0.2000 lb	0.20000 Applied to Low Area	105492
0.0020 LB	0.00020 Applied to Hole	107209
0.0006 LB	0.00020 Applied to Hole	107209
0.0046 LB	0.00046 Applied to Ditch	106230
0.0028 LB	0.00028 Applied to Ditch	106230
0.0005 LB	0.00005 Applied to Ditch	107278
0.2582 LB	0.02582 Applied to Ditch	107013
0.0600 LB	0.00680 Applied to Ditch	106430
0.0039 LB	0.00039 Applied to Ditch	106430
0.0090	0.00090 Applied to Ditch	100795
0.0110 LB	0.00110 Applied to Ditch	101354
0.0688 LB	0.00688 Applied to Ditch	101354
25.0000 LB	2.50000 Applied to Stream	103486
2.0000 LB	0.20000 Applied to Field: Non-Rice Irrigated	106251
20.0000 LB	2.00000 Applied to Field: Non-Rice Irrigated	106251
15.0000 LB	1.50000 Applied to Field: Non-Rice Irrigated	106251
35.0000 LB	3.50000 Applied to Field: Non-Rice Irrigated	106251
30.0000 LB	3.00000 Applied to Field: Non-Rice Irrigated	106251
40.0000 LB	4.00000 Applied to Field: Non-Rice Irrigated	106251
25.0000 LB	2.50000 Applied to Field: Non-Rice Irrigated	106251
25.0000 LB	2.50000 Applied to Field: Non-Rice Irrigated	106251
25.0000 LB	2.50000 Applied to Field: Non-Rice Irrigated	106251
20.0000 LB	2.00000 Applied to Field: Non-Rice Irrigated	106251
25.0000 LB	2.50000 Applied to Field: Non-Rice Irrigated	105863
20.0000 LB	2.00000 Applied to Field: Non-Rice Irrigated	101309
14.0000 LB	1.40000 Applied to Field: Non-Rice Irrigated	101309
20.0000 LB	2.00000 Applied to Field: Non-Rice Irrigated	105286
50.0000 LB	5.00000 Applied to Field: Non-Rice Irrigated	105951
15.0000 LB	1.50000 Applied to Field: Non-Rice Irrigated	105951
10.0000 LB	1.00000 Applied to Field: Non-Rice Irrigated	105951
20.0000 LB	2.00000 Applied to Field: Non-Rice Irrigated	104473
25.0000 LB	2.50000 Applied to Field: Non-Rice Irrigated	104373
30.0000 LB	3.00000 Applied to Field: Non-Rice Irrigated	104373
15.0000 LB	1.50000 Applied to Field: Non-Rice Irrigated	104373
30.0000 LB	3.00000 Applied to Field: Non-Rice Irrigated	104373
40.0000 LB	4.00000 Applied to Field: Non-Rice Irrigated	106251
25.0000 LB	2.50000 Applied to Field: Non-Rice Irrigated	106251
28.0000 LB	2.80000 Applied to Field: Non-Rice Irrigated	106251
45.0000 LB	4.50000 Applied to Field: Non-Rice Irrigated	106251
30.0000 LB	3.00000 Applied to Field: Non-Rice Irrigated	106251
25.0000 LB	2.50000 Applied to Field: Non-Rice Irrigated	106251
15.0000 LB	1.50000 Applied to Field: Non-Rice Irrigated	106251
40.0000 LB	4.00000 Applied to Ditch	106271
20.0000 LB	2.00000 Applied to Ditch	102274
0.0400 LB	0.00400 Applied to SW-Retention Basin	100604
0.0910 LB	0.00910 Applied to Low Area	100368
15.0000 LB	1.50000 Applied to Field: Non-Rice Irrigated	100344

15.0000 LB	1.50000 Applied to Field: Non-Rice Irrigated	100344
0.0900 LB	0.00900 Applied to Wetland	104298
0.0200 LB	0.00200 Applied to Ditch	107034
0.0500 LB	0.00500 Applied to Ditch	102972
1.3700 lb	0.13700 Applied to Pond	102970
3.0000 lb	0.30000 Applied to Wetland	105492
2.0000 lb	0.20000 Applied to Low Area	106463
4.0000 LB	0.40000 Applied to Low Area	106463
1.0000 lb	0.10000 Applied to Low Area	105492
2.0000 LB	0.20000 Applied to Low Area	106688
2.0000 LB	0.20000 Applied to Low Area	106688
0.0200 LB	0.00200 Applied to Stream	102830
0.0200 LB	0.00200 Applied to Stream	102830
4.0000 lb	0.40000 Applied to Low Area	105658
3.0000 lb	0.30000 Applied to Low Area	105658
8.0000 LB	0.80000 Applied to Low Area	105658
10.0000 LB	1.00000 Applied to Pond	106960
5.0000 LB	0.50000 Applied to Pond	106960
0.2500 LB	0.02500 Applied to Pond	106796
0.0910 LB	0.00910 Applied to Stream	102836
0.5000 LB	0.05000 Applied to Low Area	100592
0.5000 LB	0.05000 Applied to Low Area	100592
0.0400 LB	0.00400 Applied to Ditch	104705
0.0200 LB	0.00200 Applied to Ditch	104705
0.3600 lb	0.03600 Applied to Low Area	102970
0.0910 LB	0.00910 Applied to Low Area	102970
5.0000 lb	0.50000 Applied to Low Area	106628
3.0000 LB	0.30000 Applied to Low Area	100592
1.0000 lb	0.10000 Applied to Low Area	106463
0.5000 LB	0.05000 Applied to Low Area	106463
6.0000 lb	0.60000 Applied to Low Area	106463
3.0000 LB	0.30000 Applied to Low Area	106463
3.0000 lb	0.30000 Applied to Low Area	106463
4.0000 LB	0.40000 Applied to Low Area	106463
2.0000 lb	0.20000 Applied to Low Area	103840
2.5200 lb	0.25200 Applied to Low Area	102954
1.0000 LB	0.10000 Applied to Low Area	102954
7.1100 lb	0.71100 Applied to Pond	102954
0.0400 LB	0.00400 Applied to Ditch	104254
0.0020 LB	0.00020 Applied to Ditch	104254
0.0200 LB	0.00200 Applied to Ditch	104254
0.0220 LB	0.00400 Applied to Ditch	210923
0.0040 LB	0.00040 Applied to Ditch	210923
0.1300 LB	0.01300 Applied to Low Area	102841
6.0000 lb	0.60000 Applied to Low Area	107219
0.5000 lb	0.05000 Applied to Low Area	103998
1.0000 LB	0.10000 Applied to Low Area	103998

0.2500 LB	0.02500 Applied to Low Area	104422
1.0000 LB	0.10000 Applied to Low Area	103998
2.0000 LB	0.20000 Applied to Low Area	102830
3.5000 LB	0.35000 Applied to Low Area	102830
0.1300 LB	0.01300 Applied to Stream	107095
1.5000 lb	0.15000 Applied to Low Area	103960
0.1100 LB	0.01100 Applied to Ditch	105710
15.0000 LB	1.50000 Applied to Low Area	100592
5.0000 lb	0.50000 Applied to Low Area	102830
0.2500 LB	0.02500 Applied to Ditch	107179
0.0200 LB	0.00200 Applied to Ditch	107179
15.0000 LB	1.50000 Applied to Field: Non-Rice Irrigated	104373
20.0000 LB	2.00000 Applied to Field: Non-Rice Irrigated	104373
10.0000 LB	1.00000 Applied to Field: Non-Rice Irrigated	104373
15.0000 LB	Applied to Field: Non-Rice Irrigated	104373
15.0000 LB	1.50000 Applied to Field: Non-Rice Irrigated	104373
25.0000 LB	2.50000 Applied to Field: Non-Rice Irrigated	104373
5.0000 LB	0.50000 Applied to Field: Non-Rice Irrigated	104373
20.0000 LB	2.00000 Applied to Field: Non-Rice Irrigated	104373
20.0000 LB	2.00000 Applied to Field: Non-Rice Irrigated	104373
12.0000 LB	1.20000 Applied to Field: Non-Rice Irrigated	104373
15.0000 LB	1.50000 Applied to Field: Non-Rice Irrigated	104373
35.0000 LB	3.50000 Applied to Field: Non-Rice Irrigated	104373
20.0000 LB	2.00000 Applied to Field: Non-Rice Irrigated	104373
20.0000 LB	2.00000 Applied to Field: Non-Rice Irrigated	104373
5.0000 LB	0.50000 Applied to Field: Non-Rice Irrigated	104373
25.0000 LB	2.50000 Applied to Field: Non-Rice Irrigated	104373
25.0000 LB	2.50000 Applied to Field: Non-Rice Irrigated	104373
20.0000 LB	2.00000 Applied to Field: Non-Rice Irrigated	104373
25.0000 LB	2.50000 Applied to Field: Non-Rice Irrigated	104373
12.0000 LB	1.20000 Applied to Field: Non-Rice Irrigated	104373
25.0000 LB	2.50000 Applied to Field: Non-Rice Irrigated	104373
20.0000 LB	2.00000 Applied to Field: Non-Rice Irrigated	104373
4.0000 lb	0.40000 Applied to Low Area	110500
2.5000 LB	0.50000 Applied to Low Area	110500
0.1800 LB	0.01800 Applied to Low Area	110500
7.0000 LB	0.70000 Applied to Low Area	210841
0.1800 LB	0.01800 Applied to Low Area	210841
0.5000 LB	0.05000 Applied to Low Area	107025
1.5000 LB	0.15000 Applied to Pond	103993
0.0090 LB	0.00090 Applied to Pond	105867
0.0820 LB	0.00820 Applied to Ditch	106244
0.0005 LB	0.00005 Applied to Ditch	102968
0.0200 LB	0.00200 Applied to Ditch	104127
0.0078 GAL	0.03400 Applied to Field: Rice	104895
28.0000 LB	2.80000 Applied to Wetland	104895
50.0000	5.00000 Applied to Wetland	104895

100.0000 LB	10.00000 Applied to Wetland	104895
40.0000 LB	4.00000 Applied to Wetland	104895
65.0000 LB	6.50000 Applied to Wetland	104895
120.0000 LB	12.00000 Applied to Wetland	104895
20.0000 LB	2.00000 Applied to Wetland	104895
0.6250 GAL	53.33300 Applied to Wetland	104895
0.5000 LB	0.05000 Applied to Pond	106960
20.0000 LB	2.00000 Applied to Slough	106801
0.2000 LB	0.02000 Applied to Pond	104414
1.5000 lb	0.15000 Applied to Low Area	103993
1.0000 LB	0.10000 Applied to Low Area	103993
0.0100	0.00100 Applied to Low Area	100604
0.0400	0.00400 Applied to Low Area	107036
0.0650 gal	0.01300 Applied to Low Area	10440
2.0000 LB	0.20000 Applied to Low Area	100592
3.0000 lb	0.30000 Applied to Low Area	104435
0.0800 LB	0.00800 Applied to Pond	105681
15.0000 LB	1.50000 Applied to Stream	103486
0.0910 LB	0.00910 Applied to Low Area	104652
5.7300 LB	0.57300 Applied to Low Area	102830
8.0000 LB	0.80000 Applied to Low Area	107034
0.1300	0.01300 Applied to Low Area	102960
10.0000	1.00000 Applied to Low Area	102979
4.0000 LB	0.40000 Applied to Low Area	102979
2.0000 lb	0.20000 Applied to Low Area	107139
1.7400 lb	0.17400 Applied to Pond	107038
0.5000 LB	0.05000 Applied to Low Area	100584
0.0400 lb	0.00400 Applied to Low Area	104443
0.0200 LB	0.00200 Applied to Low Area	104443
0.2500 lb	0.02500 Applied to Low Area	103998
0.0200 LB	0.00200 Applied to Pond	104581
2.0000 LB	0.20000 Applied to Low Area	100596
0.0800 lb	0.00800 Applied to Low Area	103992
2.0000 lb	0.20000 Applied to Low Area	103994
1.0000 LB	0.10000 Applied to Low Area	103994
4.0000 LB	0.40000 Applied to Low Area	110475
0.5000 lb	0.05000 Applied to Low Area	103998
0.5000 lb	0.05000 Applied to Low Area	103998
0.0400 LB	0.00400 Applied to Low Area	105681
0.2500 LB	0.02500 Applied to Low Area	105681
0.5000 LB	0.05000 Applied to Low Area	100592
2.5000 LB	0.25000 Applied to Low Area	100592
79.0000 GAL	16309.68000 Applied to Aerial - Adulticide	
69.0000 GAL	14245.16000 Applied to Aerial - Adulticide	
46.0000 GAL	9496.77400 Applied to Aerial - Adulticide	
56.0000 GAL	11561.29000 Applied to Aerial - Adulticide	
51.0000 GAL	10529.03000 Applied to Aerial - Adulticide	

64.0000 GAL	13212.90000	Applied to Aerial - Adulticide	
77.5000 GAL	6123.45700	Applied to Aerial - Adulticide	
64.0000 GAL	3126.71800	Applied to Aerial - Adulticide	
76.0000 GAL	2687.29300	Applied to Aerial - Adulticide	
76.0000 GAL	2105.62800	Applied to Aerial - Adulticide	
73.0000 GAL	1662.63300	Applied to Aerial - Adulticide	
77.0000 GAL	1488.82200	Applied to Aerial - Adulticide	
0.2000	0.02000	Applied to Pond	105684
1.5000 lb	0.15000	Applied to Low Area	107035
0.0115 LB	0.00115	Applied to Ditch	100119
0.0085 LB	0.00085	Applied to Ditch	100120
0.0051 LB	0.00051	Applied to Ditch	100120
0.0057 LB	0.00057	Applied to Ditch	101701
0.0184 LB	0.00184	Applied to Ditch	101701
0.0172 LB	0.00172	Applied to Ditch	101701
0.0092 LB	0.00092	Applied to Ditch	101701
0.0069 LB	0.00069	Applied to Ditch	101701
0.0400 LB	0.00400	Applied to Ditch	107019
5.0000 LB	0.50000	Applied to Ditch	106422
15.0000 LB	1.50000	Applied to Ditch	106422
20.0000 LB	2.00000	Applied to Ditch	106422
25.0000 LB	2.50000	Applied to Field: Non-Rice Irrigated	106422
15.0000 LB	1.50000	Applied to Field: Non-Rice Irrigated	106422
20.0000	2.00000	Applied to Ditch	106424
4.0000 LB	0.40000	Applied to Low Area	105278
0.0184 LB	0.00184	Applied to Wetland	100120
0.0002 GAL	0.00046	Applied to Wetland	100120
0.0574 LB	0.00574	Applied to Wetland	100120
0.0034 LB	0.00034	Applied to Wetland	100120
0.0069 LB	0.00069	Applied to Wetland	100120
0.0034 LB	0.00034	Applied to Wetland	100120
0.0910 LB	0.00910	Applied to Low Area	101449
0.0060 LB	0.00060	Applied to Low Area	106229
0.0600 LB	0.00600	Applied to Low Area	105902
0.0400 LB	0.00400	Applied to Pond	107034
0.1000 LB	0.01000	Applied to Pond	106643
0.0115 LB	0.00115	Applied to Low Area	
0.0826 LB	0.00826	Applied to Pond	101717
0.2755 LB	0.02755	Applied to Pond	101717
0.0057 LB	0.00057	Applied to Pond	101717
0.0057 LB	0.00057	Applied to Pond	101717
0.0230 LB	0.00230	Applied to Ditch	
0.0220 LB	0.00220	Applied to Ditch	
0.0459 LB	0.00459	Applied to Ditch	
0.0574 LB	0.00574	Applied to Ditch	
0.5000 LB	0.05000	Applied to Pond	106960
0.2500 LB	0.02500	Applied to Low Area	106960

0.2700 LB	0.02700 Applied to Low Area	106229
0.0007 GAL	0.00138 Applied to Low Area	100163
0.0248 LB	0.00248 Applied to Low Area	100163
0.0287 LB	0.00287 Applied to Low Area	100163
0.0195 LB	0.00195 Applied to Low Area	100163
0.0650 GAL	0.01300 Applied to Low Area	106960
1.0000 LB	0.10000 Applied to Low Area	101065
0.0400 LB	0.00400 Applied to Low Area	101065
0.0200 LB	0.00200 Applied to Low Area	101065
0.0200 LB	0.00200 Applied to Low Area	101065
0.0092 LB	0.00092 Applied to Ditch	102864
30.0000 LB	3.00000 Applied to Field: Non-Rice Irrigated	105286
25.0000 LB	2.50000 Applied to Field: Non-Rice Irrigated	105286
15.0000 LB	1.50000 Applied to Ditch	105286
2.0000 LB	0.20000 Applied to Low Area	100369
0.2000 LB	0.02000 Applied to Low Area	100369
0.0910 LB	0.00910 Applied to Low Area	100369
3.0000 lb	0.30000 Applied to Ditch	104652
0.1800 lb	0.01800 Applied to Ditch	100596
20.0000 LB	2.00000 Applied to Wetland	104652
5.3000 lb	0.53000 Applied to Low Area	104652
0.0200 LB	0.00200 Applied to Ditch	100598
2.0000 lb	0.20000 Applied to Low Area	104007
1.0000 lb	0.10000 Applied to Low Area	100592
0.1800 lb	0.01800 Applied to Low Area	105904
0.0200 LB	0.00200 Applied to Pond	100671
3.0000 LB	0.30000 Applied to Ditch	104127
4.6070 LB	0.46070 Applied to Low Area	100724
0.3903 LB	0.03903 Applied to Low Area	100724
0.0432 LB	0.00432 Applied to Low Area	100724
0.0172 LB	0.00172 Applied to Low Area	100724
0.2296 LB	0.02296 Applied to Low Area	100724
0.0459 LB	0.00459 Applied to Low Area	100724
0.1148 LB	0.01148 Applied to Low Area	100724
0.0803 LB	0.00803 Applied to Low Area	100724
0.0057 LB	0.00057 Applied to Low Area	100724
0.0574 LB	0.00574 Applied to Low Area	100724
0.1158 LB	0.01148 Applied to Low Area	100717
0.5000	0.05000 Applied to Low Area	100717
1.0000 LB	0.10000 Applied to Low Area	100717
0.0551 LB	0.00551 Applied to Low Area	100717
0.4408 LB	0.04408 Applied to Low Area	100717
0.0057 LB	0.00057 Applied to Low Area	100717
0.1377 LB	0.01377 Applied to Low Area	100717
0.0230 LB	0.00230 Applied to Low Area	100419
0.0011	0.00011 Applied to Low Area	100419
0.0092 LB	0.00092 Applied to Low Area	100409

0.0069 LB	0.00069 Applied to Low Area	100409
60.9000 LB	6.09000 Applied to Wetland	100806
0.5000 LB	0.05000 Applied to Pond	105684
0.0400 lb	0.00400 Applied to Low Area	107034
0.2500 LB	0.02500 Applied to Low Area	107034
0.0367 LB	0.00367 Applied to Wetland	100698
0.5509 LB	0.05509 Applied to Pond	
0.0137 LB	0.00137 Applied to Low Area	100132
0.0735 LB	0.00735 Applied to Low Area	100457
0.0092 LB	0.00092 Applied to Low Area	100457
0.0115 LB	0.00115 Applied to Low Area	100457
0.0172 LB	0.00172 Applied to Low Area	100457
0.0023 LB	0.00023 Applied to Low Area	100457
0.1300 LB	0.01300 Applied to Pond	104368
0.2066 LB	0.02066 Applied to Low Area	
0.3788 LB	0.03788 Applied to Low Area	
0.0189 GAL	0.03788 Applied to Low Area	
0.0200 LB	0.00200 Applied to Low Area	104051
1.0482 LB	0.10482 Applied to Low Area	
0.0029 GAL	0.00579 Applied to Low Area	
10.0000 LB	1.00000 Applied to Field: Non-Rice Irrigated	100348
0.0057 LB	0.00057 Applied to Low Area	
0.0057 LB	0.00057 Applied to Low Area	
0.0046 LB	0.00046 Applied to Low Area	
0.0057 LB	0.00057 Applied to Low Area	
9.0000 lb	0.90000 Applied to Wetland	103261
2.0000 LB	0.20000 Applied to Wetland	103261
0.0275 LB	0.00275 Applied to Low Area	
0.1377 LB	0.01377 Applied to Stream	
0.0230 LB	0.00230 Applied to Stream	
0.0381 LB	0.00381 Applied to Wetland	100717
0.0200 LB	0.00200 Applied to Ditch	100596
0.0100 LB	0.00100 Applied to Ditch	100596
0.0100 LB	0.00100 Applied to Ditch	100596
0.0800 LB	0.00800 Applied to Pond	106356
0.5000 LB	0.05000 Applied to Ditch	106462
0.0600 LB	0.00600 Applied to Low Area	105676
0.3000 LB	3.00000 Applied to Low Area	107139
2.0000 LB	0.20000 Applied to Ditch	107039
10.0000 lb	1.00000 Applied to Low Area	210827
0.0400 LB	0.00400 Applied to Pond	104045
0.0400 LB	0.00400 Applied to Pond	104045
2.0000 LB	0.20000 Applied to Wetland	104702
0.2000 lb	0.02000 Applied to Low Area	107094
0.0115 LB	0.00115 Applied to Low Area	
0.1377 LB	0.01377 Applied to Low Area	100691
0.8946 LB	0.08946 Applied to Low Area	

0.0003 GAL	0.00069 Applied to Low Area	
0.0230 LB	0.00230 Applied to Ditch	100379
25.0000 LB	2.50000 Applied to Field: Non-Rice Irrigated	100344
12.0000 LB	1.20000 Applied to Field: Non-Rice Irrigated	100344
17.0000 LB	1.70000 Applied to Field: Non-Rice Irrigated	100344
0.0367 LB	0.00367 Applied to Low Area	
20.0000 LB	2.00000 Applied to Lake	
0.0092 LB	0.00092 Applied to Pond	
0.0083 LB	0.00083 Applied to Pond	
0.0918 LB	0.00918 Applied to Pond	
0.0918 LB	0.00918 Applied to Pond	
0.0459 LB	0.00459 Applied to Pond	
0.0918 LB	0.00918 Applied to Pond	
0.0115 LB	0.00115 Applied to Pond	
0.5000 LB	0.05000 Applied to Unspecified	100592
1.0000 LB	0.10000 Applied to Unspecified	100592
0.2500 LB	0.00002 Applied to Pond	104449
0.0057 LB	0.00057 Applied to Low Area	101702
0.0083 LB	0.00083 Applied to Low Area	101702
0.0103 LB	0.00103 Applied to Low Area	101702
0.0023 LB	0.00023 Applied to Low Area	101702
0.0023 LB	0.00023 Applied to Low Area	101702
0.0011 LB	0.00011 Applied to Low Area	101702
0.0253 LB	0.00253 Applied to Low Area	
0.0106 LB	0.00106 Applied to Low Area	
2.5000 LB	0.25000 Applied to Pond	104412
1.6300 lb	0.16300 Applied to Low Area	106082
0.1800 LB	0.01800 Applied to Stream	106082
0.2500 LB	0.02500 Applied to Low Area	104259
0.2500 lb	0.02500 Applied to Pond	103973
0.2500 lb	0.02500 Applied to Pond	103973
0.1800 LB	0.01800 Applied to Pond	103973
0.2500 LB	0.02500 Applied to Pond	107022
0.0500 LB	0.00500 Applied to Ditch	107025
7.0000 LB	0.70000 Applied to Ditch	105307
4.0000 LB	0.40000 Applied to Ditch	105307
5.5000 LB	0.55000 Applied to Ditch	105307
0.5000 lb	0.05000 Applied to Pond	107033
1.0000 LB	0.10000 Applied to Pond	107033
0.0459 LB	0.00459 Applied to Low Area	100457
0.0011 GAL	0.00230 Applied to Low Area	100457
0.1159 LB	0.01159 Applied to Wetland	100457
0.0367 LB	0.00367 Applied to Wetland	100457
0.0115 LB	0.00115 Applied to Wetland	100457
0.1079 LB	0.01079 Applied to Stream	100457
0.6887 LB	0.06887 Applied to Stream	100457
0.0275 LB	0.00275 Applied to Stream	100457

0.0046 LB	0.00046 Applied to Stream	100457
0.0069 LB	0.00069 Applied to Stream	100457
0.0046 LB	0.00046 Applied to Stream	100457
0.0014 LB	0.00014 Applied to Low Area	
0.0400 LB	0.00400 Applied to Pond	105270
0.5000 LB	0.05000 Applied to Low Area	107242
0.0900 LB	0.00900 Applied to Low Area	107242
2.5000 LB	0.25000 Applied to Low Area	107242
0.0100 GAL	0.00200 Applied to Low Area	107242
2.0000 LB	0.20000 Applied to Ditch	106627
2.0000 LB	0.20000 Applied to Ditch	106627
0.0400 LB	0.00400 Applied to Ditch	106627
0.0073 LB	0.00073 Applied to Low Area	100493
0.0001 GAL	0.00014 Applied to Low Area	100493
0.0023 LB	0.00023 Applied to Low Area	
0.0011 LB	0.00011 Applied to Low Area	
0.0023 LB	0.00023 Applied to Stream	
0.1000 LB	0.01000 Applied to Low Area	105731
0.5000 lb	0.05000 Applied to Low Area	104434
0.5000 lb	0.05000 Applied to Low Area	104434
10.0000 LB	1.00000 Applied to Waste Water Treatment Plant	104427
2.5000 LB	0.25000 Applied to Waste Water Treatment Plant	104427
0.0400 LB	0.00400 Applied to Low Area	105684
0.0400 LB	0.00400 Applied to Pond	103975
0.2089 LB	0.02089 Applied to Low Area	100119
0.2124 LB	0.02124 Applied to Low Area	100119
3.0000 LB	0.30000 Applied to Low Area	100119
0.0034 LB	0.00034 Applied to Low Area	100119
2.0000 LB	0.20000 Applied to Pond	100119
6.0000 LB	0.60000 Applied to Low Area	100119
0.0069 LB	0.00069 Applied to Low Area	100685
0.0020 LB	0.00020 Applied to Ditch	100596
0.0115 LB	0.00115 Applied to Stream	
0.0001 GAL	0.00023 Applied to Stream	
0.0735 LB	0.00735 Applied to Stream	
0.0344 LB	0.00344 Applied to Stream	
0.0003 GAL	0.00057 Applied to Stream	
1.0000 LB	0.10000 Applied to Stream	
0.1391 LB	0.01391 Applied to Stream	
0.0138 LB	0.00138 Applied to Stream	
0.0126 LB	0.00126 Applied to Pond	101702
0.0918 LB	0.00918 Applied to Pond	101702
1.0000 LB	0.10000 Applied to Pond	101702
0.0631 LB	0.00631 Applied to Pond	101702
1.0000 LB	0.10000 Applied to Ditch	101652
0.5000 LB	0.05000 Applied to Ditch	101652
0.0400 LB	0.00400 Applied to Ditch	101652

0.0870 LB	0.00870 Applied to Ditch	101652
0.0870 LB	0.00870 Applied to Ditch	101652
0.0870 LB	0.00870 Applied to Ditch	101652
1.5000 LB	0.15000 Applied to Ditch	101652
0.0448 LB	0.00448 Applied to Ditch	
0.0073 LB	0.00073 Applied to Stream	
0.0004 GAL	0.00073 Applied to Stream	
0.1377 LB	0.01377 Applied to Stream	
0.0172 LB	0.00172 Applied to Stream	
0.0009 LB	0.00009 Applied to Ditch	
0.0021 GAL	0.00413 Applied to Ditch	
0.0413 LB	0.00413 Applied to Ditch	
0.0163 LB	0.00163 Applied to Ditch	
5.0000 LB	0.50000 Applied to Low Area	
1.5803 LB	0.15803 Applied to Pond	101717
0.0086 GAL	0.01722 Applied to Pond	101717
0.5000	0.05000 Applied to Pond	101717
1.2000 LB	0.12000 Applied to Pond	101717
0.0239 LB	0.00239 Applied to Wetland	101707
3.5000 LB	0.35000 Applied to Wetland	101707
0.0161 LB	0.00161 Applied to Wetland	101707
0.0500 lb	0.00500 Applied to Wetland	102747
0.0400 lb	0.00400 Applied to Wetland	102747
0.0910 LB	0.00910 Applied to Wetland	102747
0.1800 LB	0.01800 Applied to Wetland	102747
0.0910 LB	0.00910 Applied to Wetland	102747
0.0220 LB	0.00220 Applied to Wetland	102747
0.0002 GAL	0.00048 Applied to Low Area	100506
0.6670 LB	0.06670 Applied to Low Area	100506
0.0057 LB	0.00057 Applied to Low Area	100506
0.0103 LB	0.00103 Applied to Low Area	100506
0.0023 LB	0.00023 Applied to Low Area	100506
0.0069 LB	0.00689 Applied to Ditch	
0.0115 LB	0.00115 Applied to Ditch	
0.0003 GAL	0.00069 Applied to Ditch	
0.0275 LB	0.00275 Applied to Ditch	
0.0115 LB	0.00115 Applied to Ditch	
0.0165 LB	0.00165 Applied to Ditch	
0.0298 LB	0.00298 Applied to Ditch	
0.0067 LB	0.00069 Applied to Ditch	
0.0230 LB	0.00230 Applied to Ditch	
0.0057 LB	0.00057 Applied to Ditch	
0.0046 LB	0.00046 Applied to Ditch	
0.0057 LB	0.00057 Applied to Ditch	
0.2800 GAL	0.05700 Applied to Low Area	107237
1.0000 LB	0.10000 Applied to Ditch	106624
0.0600 LB	0.00600 Applied to Low Area	102830

0.1300 LB	0.01300 Applied to Low Area	101453
0.1300 LB	0.01300 Applied to Low Area	101453
0.0600 LB	0.00600 Applied to Low Area	101453
0.1100 LB	0.01100 Applied to Low Area	101453
1.0000 lb	0.10000 Applied to Low Area	106395
0.2500 LB	0.02500 Applied to Pond	106105
0.2500 LB	0.02500 Applied to Low Area	105684
0.0870 LB	0.00870 Applied to Ditch	106450
0.0200 LB	0.00200 Applied to Ditch	106450
7.5000 LB	0.75000 Applied to Low Area	103993
0.1600 LB	0.01600 Applied to Low Area	104650
0.5000 LB	0.05000 Applied to Low Area	106420
8.0000 lb	0.80000 Applied to Low Area	106462
0.5000 LB	0.05000 Applied to Low Area	106462
2.5000	0.25000 Applied to Low Area	102960
1.0000 lb	0.10000 Applied to Low Area	105495
0.0870 LB	0.00870 Applied to Low Area	105495
0.0300 GAL	0.00600 Applied to Low Area	105495
0.4000 lb	0.04000 Applied to Low Area	106593
83.7500 LB	8.37500 Applied to Wetland	101707
0.0574 LB	0.00574 Applied to Low Area	101700
0.1320 LB	0.01320 Applied to Low Area	101700
0.0803 LB	0.00803 Applied to Low Area	101700
0.0574 LB	0.00574 Applied to Low Area	101700
13.0000 LB	1.30000 Applied to Low Area	104386
0.0200 LB	0.00200 Applied to Low Area	107017
0.1435 LB	0.01435 Applied to Low Area	100720
0.1045 LB	0.01045 Applied to Low Area	100720
1.0000 LB	0.10000 Applied to Pond	102841
0.0069 LB	0.00069 Applied to Ditch	105308
1.0000 LB	0.10000 Applied to Low Area	
0.1800 LB	0.01800 Applied to Low Area	
0.0003 GAL	0.00069 Applied to Low Area	
0.5177 LB	0.05177 Applied to Low Area	
0.0372 LB	0.00372 Applied to Low Area	
0.0019 GAL	0.00372 Applied to Low Area	
0.0262 LB	0.00262 Applied to Low Area	
0.0082 GAL	0.01641 Applied to Low Area	
0.0115 LB	0.00115 Applied to Low Area	
0.0202 LB	0.00202 Applied to Ditch	101121
0.0025 LB	0.00025 Applied to Ditch	101121
0.0001 GAL	0.00025 Applied to Ditch	101121
0.0200 LB	0.00200 Applied to Ditch	107249
0.0023 LB	0.00023 Applied to Stream	101067
0.0023 LB	0.00023 Applied to Stream	106682
0.0034 LB	0.00034 Applied to Stream	106682
0.0800 lb	0.00800 Applied to Low Area	103992

1.0000 LB	0.10000 Applied to Low Area	103992
0.0600 LB	0.00600 Applied to Pond	100806
0.0360 LB	0.00360 Applied to Stream	100457
0.0459 LB	0.00459 Applied to Stream	100457
0.0413 LB	0.00413 Applied to Stream	100457
0.0011 LB	0.00011 Applied to Stream	100457
0.1033 LB	0.01033 Applied to Stream	100457
0.0207 LB	0.00207 Applied to Ditch	
0.0046 LB	0.00046 Applied to Ditch	
0.0069 LB	0.00069 Applied to Ditch	
0.0057 LB	0.00057 Applied to Ditch	
0.0080 LB	0.00080 Applied to Ditch	
0.0030 LB	0.00030 Applied to Ditch	
0.0200 LB	0.00200 Applied to Ditch	104067
0.1300 LB	0.01300 Applied to Low Area	102836
0.0200 lb	0.00200 Applied to Low Area	105495
0.0600 lb	0.00600 Applied to Low Area	107023
0.2500 LB	0.02500 Applied to Low Area	107023
10.0000 LB	1.00000 Applied to Low Area	105658
7.5000 LB	0.75000 Applied to Low Area	105658
3.0000 LB	0.30000 Applied to Pond	100655
0.1300 lb	0.01300 Applied to Pond	104660
0.0500 LB	0.00500 Applied to Pond	105676
0.1000 LB	0.01000 Applied to Pond	104563
0.0200 LB	0.00200 Applied to Pond	105887
0.2000 lb	0.02000 Applied to Low Area	102959
0.0910 LB	0.00910 Applied to Low Area	102959
0.0400 LB	0.00400 Applied to Low Area	102959
0.0200 LB	0.00200 Applied to Low Area	102959
0.0910 LB	0.00910 Applied to Low Area	102959
0.0400 LB	0.00400 Applied to Low Area	102959
0.1600 LB	0.01600 Applied to Low Area	102959
0.0126 LB	0.00126 Applied to Low Area	100724
0.0069 LB	0.00069 Applied to Low Area	100724
0.0002 GAL	0.00034 Applied to Low Area	100724
0.0115 LB	0.00115 Applied to Low Area	100724
0.0034 LB	0.00034 Applied to Low Area	100724
0.0023 LB	0.00023 Applied to Low Area	100724
0.0103 LB	0.00103 Applied to Low Area	100724
0.0400 LB	0.00400 Applied to Low Area	105278
0.1297 LB	0.01297 Applied to Low Area	102343
35.0000 LB	3.50000 Applied to Slough	106423
15.0000 LB	1.50000 Applied to Slough	106423
50.0000 LB	5.00000 Applied to Slough	106423
60.0000 LB	6.00000 Applied to Slough	106423
35.0000 LB	3.50000 Applied to Slough	106423
24.0000 LB	2.40000 Applied to Slough	106423

15.0000 LB	1.50000 Applied to Slough	106423
15.0000 LB	1.50000 Applied to Slough	106423
1.5000 lb	0.15000 Applied to Pond	100650
0.1000 LB	0.01000 Applied to Pond	100650
0.0804 LB	0.00804 Applied to Low Area	
0.1791 LB	0.01791 Applied to Low Area	
0.5107 LB	0.05107 Applied to Low Area	
25.0000 LB	2.50000 Applied to Low Area	106422
0.0207 LB	0.00207 Applied to Low Area	
0.0276 LB	0.00276 Applied to Low Area	
1.0000 LB	0.10000 Applied to Ditch	107262
1.0000 LB	0.10000 Applied to Ditch	107262
0.1100 GAL	0.02000 Applied to Ditch	107262
1.0000 LB	0.10000 Applied to Ditch	107262
1.0000 LB	0.10000 Applied to Ditch	107262
0.0115 LB	0.00115 Applied to Low Area	103868
0.0124 LB	0.00124 Applied to Low Area	103868
0.0002 GAL	0.00044 Applied to Low Area	103868
0.0230 LB	0.00230 Applied to Low Area	103868
0.1355 LB	0.01355 Applied to Low Area	103868
1.0000 LB	0.10000 Applied to Low Area	103868
0.0597 LB	0.00597 Applied to Wetland	102341
0.4581 LB	0.04581 Applied to Low Area	
1.0000 LB	0.10000 Applied to Low Area	
1.2500 LB	0.12500 Applied to Low Area	
6.5000 LB	0.65000 Applied to Stream	
0.0046 LB	0.00046 Applied to Stream	
0.0241 GAL	0.04821 Applied to Stream	
0.2000 LB	0.02000 Applied to Low Area	106422
0.2000 LB	0.02000 Applied to Low Area	106422
0.0100 LB	0.00100 Applied to Low Area	100367
0.0344 LB	0.00344 Applied to Low Area	100130
0.0689 LB	0.00069 Applied to Low Area	101701
0.1745 LB	0.01745 Applied to Low Area	101701
0.0002 GAL	0.00037 Applied to Low Area	101701
0.0218 LB	0.00218 Applied to Low Area	101701
0.0505 LB	0.00505 Applied to Low Area	101701
0.7500 LB	0.07500 Applied to Low Area	101701
0.7500 LB	0.07500 Applied to Low Area	101701
0.0092 LB	0.00092 Applied to Stream	100724
0.0400 LB	0.00400 Applied to Ditch	100794
1.5000 LB	0.15000 Applied to Ditch	100794
0.0020 LB	0.00020 Applied to Low Area	104415
1.5000 LB	0.15000 Applied to Low Area	210984
0.1800 LB	0.01800 Applied to Low Area	210984
0.3600 LB	0.03600 Applied to Low Area	210984
0.0100 LB	0.00100 Applied to Low Area	100369

0.1300 lb	0.01300 Applied to Low Area	104518
0.1300 lb	0.01300 Applied to Low Area	102965
0.0910 lb	0.00910 Applied to Hole	107039
0.0450 gal	0.00910 Applied to Hole	107039
4.6300 GAL	956.12000 Applied to Truck Fog	
6.7000 GAL	1383.87000 Applied to Truck Fog	
7.3125 GAL	1509.67000 Applied to Truck Fog	
2.4400 GAL	208.00000 Applied to Truck Fog	
7.1090 GAL	606.66000 Applied to Truck Fog	
5.6875 GAL	485.33000 Applied to Truck Fog	
2.4375 GAL	358.62000 Applied to Truck Fog	
2.0300 GAL	419.00000 Applied to Truck Fog	
0.0039 GAL	5.70000 Localized Adulticide Application	210939
0.1500 GAL	13.33000 Localized Adulticide Application	210939
2.1000 GAL	180.00000 Applied to Truck Fog	
2.8400 GAL	587.09000 Applied to Truck Fog	
4.0625 GAL	838.70000 Applied to Truck Fog	
3.2500 GAL	670.90000 Applied to Truck Fog	
0.0039 GAL	5.70000 Localized Adulticide Application	107309
0.2340 GAL	20.00000 Localized Adulticide Application	210994
0.0390 GAL	3.33000 Localized Adulticide Application	107181
0.0780 GAL	10.00000 Localized Adulticide Application	107166
0.0780 GAL	11.47000 Localized Adulticide Application	107139
0.2000 LB	0.02000 Applied to SW-CB Outfall	102837
0.0870 LB	0.00870 Applied to SW-CB Outfall	102837
0.0870 LB	0.00870 Applied to SW-CB Outfall	102837
0.0400 LB	0.00400 Applied to SW-CB Outfall	102837
0.0600 LB	0.00600 Applied to SW-CB Outfall	102837
0.0200 LB	0.00200 Applied to SW-CB Outfall	102837
0.0200 LB	0.00200 Applied to SW-CB Outfall	102837
0.0200 LB	0.00200 Applied to SW-CB Outfall	102837
0.0870 LB	0.00870 Applied to SW-CB Outfall	102837
0.0600 LB	0.00600 Applied to SW-CB Outfall	102837
0.0200 LB	0.00200 Applied to Ditch	104650
0.0372 LB	0.00372 Applied to Low Area	103868
2.0000 LB	0.20000 Applied to Ditch	106627
0.5000 LB	0.05000 Applied to Ditch	106627
1.5000 LB	0.15000 Applied to Ditch	106627
0.0870 LB	0.00870 Applied to Ditch	106627
0.5000 LB	0.05000 Applied to Ditch	106627
0.5000 LB	0.05000 Applied to Ditch	106627
1.0000 GAL	1.00000 Applied to Beaver Dam	107204
3.0000 LB	0.30000 Applied to Low Area	106007
3.0000 LB	0.30000 Applied to Low Area	100768
0.0200 LB	0.00200 Applied to Low Area	103976
0.0200 LB	0.00200 Applied to Low Area	103976
1.0000 LB	0.10000 Applied to Low Area	106007

0.0574 LB	0.00574 Applied to Pond	
0.0459 LB	0.00459 Applied to Pond	
0.0600 LB	0.00600 Applied to Low Area	104067
0.0057 LB	0.00057 Applied to Low Area	101702
0.0910 LB	0.00910 Applied to Pond	110465
0.0450 GAL	0.00910 Applied to Pond	110465
0.0040 LB	0.00040 Applied to Ditch	102967
0.0200 LB	0.00200 Applied to Ditch	110464
3.0000 LB	0.30000 Applied to Low Area	104660
0.1100 LB	0.01100 Applied to Low Area	104660
0.0870 LB	0.00870 Applied to Pond	105492
0.0092 LB	0.00092 Applied to Low Area	
0.0006 GAL	0.00115 Applied to Low Area	
0.0115 LB	0.00115 Applied to Low Area	
0.0023 LB	0.00023 Applied to Low Area	
0.0011 LB	0.00011 Applied to Low Area	
0.0600 LB	0.00600 Applied to Ditch	210859
0.0034 LB	0.00034 Applied to Ditch	
0.0037 LB	0.00037 Applied to Ditch	
0.2500 LB	0.02500 Applied to Low Area	107024
0.0080 LB	0.00080 Applied to Stream	102597
0.2340 GAL	48.38000 Localized Adulticide Application	110481
0.0078 GAL	0.03440 Applied to Truck Fog	
0.6090 GAL	125.80000 Applied to Truck Fog	
0.0910 LB	0.00910 Applied to Truck Fog	
1.4000 GAL	289.00000 Applied to Truck Fog	
2.8125 GAL	580.60000 Applied to Truck Fog	
3.6500 GAL	754.00000 Applied to Truck Fog	
4.2100 GAL	360.00000 Applied to Truck Fog	
5.2800 GAL	450.66000 Applied to Truck Fog	
2.8125 GAL	240.00000 Applied to Truck Fog	
0.0069 LB	0.00069 Applied to Stream	101835
20.0000 LB	2.00000 Applied to Low Area	102837
14.0000 LB	1.40000 Applied to Low Area	102837
12.0000 LB	1.20000 Applied to Low Area	102837
20.0000 LB	2.00000 Applied to Low Area	102837
0.7500 LB	0.07500 Applied to Stream	101711
0.5000 LB	0.05000 Applied to Stream	101711
0.0275 LB	0.00275 Applied to Stream	101711
0.0230 LB	0.00230 Applied to Stream	101711
0.0115 LB	0.00115 Applied to Stream	101711
0.0126 LB	0.00126 Applied to Stream	101711
0.0138 LB	0.00138 Applied to Stream	101711
0.0069 LB	0.00069 Applied to Stream	101711
0.0425 LB	0.00425 Applied to Stream	103868
0.0069 LB	0.00069 Applied to Stream	
0.0000 GAL	0.00007 Applied to Stream	

0.0007 LB	0.00007 Applied to Stream	
0.0620 GAL	5.30000 Applied to Truck Fog	
6.5000 GAL	1341.90000 Applied to Truck Fog	
0.0011 LB	0.00011 Applied to Stream	101701
0.1148 LB	0.01148 Applied to Low Area	101700
0.0207 LB	0.00207 Applied to Low Area	101700
0.0092 LB	0.00092 Applied to Low Area	101700
0.0023 LB	0.00023 Applied to Low Area	101700
0.0023 LB	0.00023 Applied to Beaver Dam	100457
0.0551 LB	0.00551 Applied to Beaver Dam	100457
0.0034 LB	0.00034 Applied to Low Area	101701
0.0011 LB	0.00011 Applied to Low Area	101701
0.0011 LB	0.00011 Applied to Low Area	101701
0.0161 LB	0.00161 Applied to Stream	101701
0.0034 LB	0.00034 Applied to Stream	101701
0.0011 LB	0.00011 Applied to Stream	101701
0.0057 LB	0.00057 Applied to Stream	101701
0.0230 LB	0.00230 Applied to Stream	101701
0.2500 LB	0.02500 Applied to Stream	101701
0.0413 LB	0.00413 Applied to Stream	101701
0.0230 LB	0.00230 Applied to Stream	101701
0.0184 LB	0.00184 Applied to Stream	101701
4.8700 GAL	1006.45000 Applied to Truck Fog	
0.0230 GAL	0.00900 Applied to Truck Fog	
3.2500 GAL	670.00000 Applied to Truck Fog	
2.4400 GAL	208.00000 Applied to Truck Fog	
2.4375 GAL	503.22580 Applied to Truck Fog	
5.8000 GAL	1197.40000 Applied to Truck Fog	
0.0689 LB	0.00689 Applied to Stream	105308
0.0046 LB	0.00046 Applied to Stream	105308
0.0023 LB	0.00023 Applied to Stream	100528
0.0092 LB	0.00092 Applied to Low Area	100162
0.0046 LB	0.00046 Applied to Low Area	100162
1.2200 GAL	252.00000 Applied to Truck Fog	
7.5100 GAL	1551.61000 Applied to Truck Fog	
0.8120 GAL	167.70000 Applied to Truck Fog	
1.2100 GAL	104.00000 Applied to Truck Fog	
6.5000 GAL	842.00000 Applied to Truck Fog	
7.3100	624.00000 Applied to Truck Fog	
0.0078 GAL	0.03440 Applied to Truck Fog	
3.6500 GAL	755.00000 Applied to Truck Fog	
0.7000 GAL	144.50000 Applied to Truck Fog	
4.8750 GAL	1006.45000 Applied to Truck Fog	
2.6400 GAL	545.16000 Applied to Truck Fog	
2.4380 GAL	503.00000 Applied to Truck Fog	
3.0400 GAL	260.00000 Applied to Truck Fog	
0.9375 GAL	80.00000 Applied to Truck Fog	

4.8700 GAL	416.00000	Applied to Truck Fog	
4.8700 GAL	416.00000	Applied to Truck Fog	
0.0023 LB	0.00023	Applied to Low Area	100475
0.0172 LB	0.00172	Applied to Low Area	100475
0.0080 LB	0.00080	Applied to Low Area	100475
0.0034 LB	0.00034	Applied to Low Area	100475
0.2500 LB	0.02500	Applied to Low Area	106616
1.4200 GAL	293.50000	Applied to Truck Fog	
0.8100 GAL	167.00000	Applied to Truck Fog	
1.8300 GAL	377.00000	Applied to Truck Fog	
0.0092 LB	0.00092	Applied to Stream	100497
6.8600 GAL	585.86000	Applied to Truck Fog	
2.4380 GAL	503.00000	Applied to Truck Fog	
3.6500 GAL	312.00000	Applied to Truck Fog	
2.4375 GAL	503.22580	Applied to Truck Fog	
6.5000 GAL	956.00000	Applied to Truck Fog	
5.0000 LB	0.50000	Applied to Field: Non-Rice Irrigated	100344
7.5100 GAL	1551.61000	Applied to Truck Fog	
8.0000 GAL	686.00000	Applied to Truck Fog	
0.0689 LB	0.00689	Applied to Stream	100724
0.0103 LB	0.00103	Applied to Stream	100724
0.0287 LB	0.00287	Applied to Stream	100724
0.0092 LB	0.00092	Applied to Stream	100724
0.0060 LB	0.00060	Applied to Spring/Seep	106405
0.0207 LB	0.00207	Applied to Low Area	100717
0.1600 LB	0.01600	Applied to Ditch	100596
0.0400 LB	0.00400	Applied to Ditch	100596
0.0400 LB	0.00400	Applied to Ditch	100779
2.0000 LB	0.20000	Applied to Ditch	106417
0.5000 LB	0.05000	Applied to Ditch	106634
1.0000 LB	0.10000	Applied to Ditch	106634
0.0200 LB	0.00200	Applied to Ditch	106634
2.0000 LB	0.20000	Applied to Low Area	107017
2.0000 LB	0.20000	Applied to Low Area	107017
2.5000 LB	0.25000	Applied to Low Area	107017
2.0000 LB	0.20000	Applied to Low Area	107017
3.0000 LB	0.30000	Applied to Low Area	107017
0.0400 GAL	0.00870	Applied to Low Area	107220
0.0870 LB	0.00870	Applied to Low Area	107220
0.0870 LB	0.00870	Applied to Low Area	107220
0.0870 LB	0.00870	Applied to Low Area	107220
0.0870 LB	0.00870	Applied to Low Area	107220
0.0400 LB	0.00400	Applied to Low Area	107220
0.0057 LB	0.00057	Applied to Low Area	100685
3.0000 LB	0.30000	Applied to Ditch	104704
1.0000 LB	0.10000	Applied to Ditch	104704
0.1100 LB	0.01100	Applied to Low Area	107093

0.5000 LB	0.05000 Applied to Pond	101369
0.4000 LB	0.04000 Applied to Ditch	100556
0.0200 LB	0.00200 Applied to Low Area	110462
0.1500 GAL	13.30000 Applied to Surveillance	107139
0.0300 GAL	5.70000 Localized Adulticide Application	104582
0.0100 GAL	2.20000 Localized Adulticide Application	104582
0.2340 GAL	20.00000 Localized Adulticide Application	107138
0.1560 GAL	34.00000 Localized Adulticide Application	100592
0.0780 GAL	11.50000 Localized Adulticide Application	104414
0.0780 GAL	11.49000 Localized Adulticide Application	100584
0.1500 GAL	22.98000 Localized Adulticide Application	100584
0.0780 GAL	11.49000 Localized Adulticide Application	103261
0.1170 GAL	17.24000 Localized Adulticide Application	100584
0.4600 GAL	40.00000 Localized Adulticide Application	100592
1.0700 GAL	137.14000 Localized Adulticide Application	100593
0.1170 GAL	10.00000 Localized Adulticide Application	105683
0.1170 GAL	17.24000 Localized Adulticide Application	103263
0.0300 GAL	5.70000 Localized Adulticide Application	104184
0.0780 GAL	11.50000 Localized Adulticide Application	103261
0.0780 GAL	11.50000 Localized Adulticide Application	104748

NPDESWaterName	Water Body Type
Pleasant Grove Creek	STREAM
Pleasant Grove Creek Watershed	STREAM
Sucker Ravine	STREAM
Pleasant Grove Creek Watershed	STREAM
Pleasant Grove Creek Watershed	STREAM
Markham Ravine	STREAM
Auburn Ravine	STREAM
CANAL	CANAL
Markham Ravine Watershed	STREAM
Markham Ravine Watershed	STREAM
Markham Ravine Watershed	STREAM
Markham Ravine	STREAM
Markham Ravine	STREAM
Markham Ravine	STREAM
Markham Ravine	STREAM
Markham Ravine Watershed	STREAM
Antelope Creek	STREAM
Pleasant Grove Creek	STREAM
Pleasant Grove Creek	STREAM
Auburn Ravine Watershed	STREAM
Pleasant Grove Creek Watershed	STREAM
Pleasant Grove Creek Watershed	STREAM
Pleasant Grove Creek Watershed	STREAM
Pleasant Grove Creek Watershed	STREAM
Pleasant Grove Creek	STREAM
Pleasant Grove Creek	STREAM
Dry Creek Watershed	STREAM
CANAL	CANAL
CANAL	CANAL
Markham Ravine Watershed	STREAM
Pleasant Grove Creek Watershed	STREAM
Pleasant Grove Creek Watershed	STREAM
Pleasant Grove Creek Watershed	STREAM
Pleasant Grove Creek Watershed	STREAM
Miners Ravine	STREAM
Strap Ravine	STREAM
Dry Creek Watershed	STREAM
Dry Creek Watershed	STREAM
Pleasant Grove Creek Watershed	STREAM
Dry Creek Watershed	STREAM
Markham Ravine	STREAM
Blackwood Creek	STREAM
Coon Creek Watershed	STREAM
Pleasant Grove Creek Watershed	STREAM
Pleasant Grove Creek Watershed	STREAM
Dry Creek Watershed	STREAM

Kaseberg Creek	STREAM
Linda Creek	STREAM
Linda Creek	STREAM
Markham Ravine Watershed	STREAM
Markham Ravine Watershed	STREAM
Pleasant Grove Creek	STREAM
South Sutter Ditch	CANAL
South Sutter Ditch	CANAL
South Sutter Ditch	CANAL
Curry Creek	STREAM
CANAL	CANAL
CANAL	CANAL
Markham Ravine	STREAM
Markham Ravine	STREAM
Markham Ravine	STREAM
Markham Ravine	STREAM
Markham Ravine	STREAM
Markham Ravine	STREAM
Markham Ravine	STREAM
Markham Ravine	STREAM
Markham Ravine	STREAM
Markham Ravine	STREAM
Markham Ravine	STREAM
Yankee Slough Watershed	STREAM
Coon Creek Watershed	STREAM
Coon Creek Watershed	STREAM
Doty Ravine	STREAM
CANAL	CANAL
CANAL	CANAL
CANAL	CANAL
Markham Ravine Watershed	STREAM
Markham Ravine Watershed	STREAM
Markham Ravine Watershed	STREAM
Markham Ravine Watershed	STREAM
Markham Ravine Watershed	STREAM
Markham Ravine	STREAM
Markham Ravine	STREAM
Markham Ravine	STREAM
Markham Ravine	STREAM
Markham Ravine	STREAM
Markham Ravine	STREAM
Markham Ravine	STREAM
Orchard Creek	STREAM
Steelhead Creek Watershed	STREAM
Auburn Ravine Watershed	STREAM
Pleasant Grove Creek Watershed	STREAM
Coon Creek Watershed	STREAM

Coon Creek Watershed	STREAM
Markham Ravine Watershed	STREAM
Sucker Ravine	STREAM
Pleasant Grove Creek Watershed	STREAM
Pleasant Grove Creek Watershed	STREAM
Kaseberg Creek	STREAM
Pleasant Grove Creek Watershed	STREAM
Pleasant Grove Creek Watershed	STREAM
Kaseberg Creek	STREAM
CANAL	CANAL
CANAL	CANAL
Pleasant Grove Creek Watershed	STREAM
Pleasant Grove Creek Watershed	STREAM
Pleasant Grove Creek Watershed	STREAM
Pleasant Grove Creek Watershed	STREAM
Pleasant Grove Creek Watershed	STREAM
Markham Ravine Watershed	STREAM
Markham Ravine Watershed	STREAM
Lincoln Canal	CANAL
Pleasant Grove Creek Watershed	STREAM
Auburn Ravine Watershed	STREAM
Auburn Ravine Watershed	STREAM
Pleasant Grove Creek Watershed	STREAM
Pleasant Grove Creek Watershed	STREAM
Pleasant Grove Creek Watershed	STREAM
Pleasant Grove Creek Watershed	STREAM
Pleasant Grove Creek Watershed	STREAM
Pleasant Grove Creek Watershed	STREAM
Auburn Ravine Watershed	STREAM
Pleasant Grove Creek Watershed	STREAM
Pleasant Grove Creek Watershed	STREAM
Pleasant Grove Creek Watershed	STREAM
Pleasant Grove Creek Watershed	STREAM
Pleasant Grove Creek Watershed	STREAM
Pleasant Grove Creek Watershed	STREAM
Auburn Ravine Watershed	STREAM
Pleasant Grove Creek	STREAM
Pleasant Grove Creek	STREAM
Pleasant Grove Creek	STREAM
Auburn Ravine Watershed	STREAM
Auburn Ravine Watershed	STREAM
Auburn Ravine Watershed	STREAM
Dry Creek Watershed	STREAM
Dry Creek Watershed	STREAM
Pleasant Grove Creek	STREAM
Dry Creek Watershed	STREAM
Dry Creek Watershed	STREAM
Dry Creek Watershed	STREAM

Yankee Slough Watershed	STREAM
Yankee Slough Watershed	STREAM
Yankee Slough Watershed	STREAM
Yankee Slough Watershed	STREAM
Yankee Slough Watershed	STREAM
Yankee Slough Watershed	STREAM
Markham Ravine Watershed	STREAM
King Slough	STREAM
Antelope Creek	STREAM
Dry Creek Watershed	STREAM
Dry Creek Watershed	STREAM
Auburn Ravine Watershed	STREAM
Sucker Ravine	STREAM

Auburn Ravine Watershed	STREAM
Secret Ravine	STREAM
Auburn Ravine	STREAM
Markham Ravine	STREAM
Inghram Slough	STREAM
Pleasant Grove Creek Watershed	STREAM
Sucker Ravine	STREAM
Pleasant Grove Creek	STREAM
Pleasant Grove Creek Watershed	STREAM
Pleasant Grove Creek Watershed	STREAM
Miners Ravine	STREAM
Sucker Ravine	STREAM
Auburn Ravine	STREAM
Dry Creek Watershed	STREAM
Dry Creek Watershed	STREAM
Dry Creek Watershed	STREAM
Boardman Canal	CANAL
Auburn Ravine	STREAM
Dry Creek Watershed	STREAM
Dry Creek Watershed	STREAM
Dry Creek Watershed	STREAM
Miners Ravine	STREAM
Dry Creek Watershed	STREAM
Dry Creek Watershed	STREAM
Auburn Ravine	STREAM
Auburn Ravine	STREAM
Auburn Ravine Watershed	STREAM
Auburn Ravine Watershed	STREAM
See Attachment D - Block 19	
See Attachment D - Block 19	
See Attachment D - Block 19	
See Attachment D - Block 19	
See Attachment D - Block 19	

See Attachment D - Block 19	
See Attachment D - Block 19	
See Attachment D - Block 19	
See Attachment D - Block 19	
See Attachment D - Block 19	
See Attachment D - Block 19	
See Attachment D - Block 19	
Auburn Ravine	STREAM
Dry Creek Watershed	STREAM
McKinney Creek	STREAM
Lake Tahoe Watershed	STREAM
Lake Tahoe Watershed	STREAM
Bear Creek	STREAM
Bear Creek	STREAM
Bear Creek	STREAM
Bear Creek	STREAM
Bear Creek	STREAM
Pleasant Grove Creek	STREAM
CANAL	CANAL
CANAL	CANAL
CANAL	CANAL
CANAL	CANAL
CANAL	CANAL
CANAL	CANAL
Doty Ravine	STREAM
Lake Tahoe Watershed	STREAM
Lake Tahoe Watershed	STREAM
Lake Tahoe Watershed	STREAM
Lake Tahoe Watershed	STREAM
Lake Tahoe Watershed	STREAM
Lake Tahoe Watershed	STREAM
Auburn Ravine Watershed	STREAM
Rock Creek	STREAM
Auburn Ravine Watershed	STREAM
Sucker Ravine	STREAM
Boardman Canal	CANAL
Lake Tahoe	LAKE
Truckee River	RIVER
Truckee River	RIVER
Truckee River	RIVER
Truckee River	RIVER
Lake Tahoe	LAKE
Lake Tahoe	LAKE
Lake Tahoe	LAKE
Lake Tahoe	LAKE
Markham Ravine Watershed	STREAM
Markham Ravine Watershed	STREAM

Rock Creek	STREAM
Blackwood Creek	STREAM
Blackwood Creek	STREAM
Blackwood Creek	STREAM
Blackwood Creek	STREAM
Markham Ravine Watershed	STREAM
Dry Creek Watershed	STREAM
Dry Creek Watershed	STREAM
Dry Creek Watershed	STREAM
Dry Creek Watershed	STREAM
Truckee River Watershed	STREAM
Doty Ravine	STREAM
Doty Ravine	STREAM
Doty Ravine	STREAM
Pleasant Grove Creek Watershed	STREAM
Pleasant Grove Creek Watershed	STREAM
Pleasant Grove Creek Watershed	STREAM
Inghram Slough	STREAM
Auburn Ravine	STREAM
Inghram Slough	STREAM
Inghram Slough	STREAM
Auburn Ravine Watershed	STREAM
CANAL	CANAL
Auburn Ravine Watershed	STREAM
Auburn Ravine Watershed	STREAM
Ophir Canal	CANAL
Pleasant Grove Creek Watershed	STREAM
Squaw Creek	STREAM
Squaw Creek	STREAM
Squaw Creek	STREAM
Squaw Creek	STREAM
Squaw Creek	STREAM
Squaw Creek	STREAM
Squaw Creek	STREAM
Squaw Creek	STREAM
Squaw Creek	STREAM
Squaw Creek	STREAM
Squaw Creek	STREAM
Truckee River	RIVER
Truckee River	RIVER
Truckee River	RIVER
Truckee River	RIVER
Truckee River	RIVER
Truckee River	RIVER
Truckee River	RIVER
North Fork of the American River	RIVER
North Fork of the American River	RIVER
Griff Creek	STREAM

Griff Creek	STREAM
Squaw Creek	STREAM
Auburn Ravine	STREAM
Sucker Ravine	STREAM
Sucker Ravine	STREAM
Lake Tahoe Watershed	STREAM
Ice Lakes	LAKE
Lake Tahoe Watershed	STREAM
Blackwood Creek	STREAM
Blackwood Creek	STREAM
Blackwood Creek	STREAM
Blackwood Creek	STREAM
Blackwood Creek	STREAM
Sailors Ravine	STREAM
Ice Lakes	LAKE
Ice Lakes	LAKE
Ice Lakes	LAKE
Auburn Ravine Watershed	STREAM
Lake Tahoe	LAKE
Lake Tahoe	LAKE
Coon Creek Watershed	STREAM
Lake Tahoe	LAKE
Lake Tahoe	LAKE
Lake Tahoe	LAKE
Lake Tahoe	LAKE
Wooley Creek	STREAM
Wooley Creek	STREAM
Ice Lakes	LAKE
Ice Lake	LAKE
Ice Lakes	LAKE
Truckee River	RIVER
Auburn Ravine	STREAM
Auburn Ravine	STREAM
Auburn Ravine	STREAM
Fiddler Green Canal	CANAL
Pleasant Grove Creek Watershed	STREAM
Auburn Ravine	STREAM
Miners Ravine	STREAM
Secret Ravine	STREAM
Dry Creek Watershed	STREAM
Middle Fork of the American River Watershed	STREAM
Middle Fork of the American River Watershed	STREAM
Pleasant Grove Creek Watershed	STREAM
Antelope Creek	STREAM
Ice Lakes	LAKE
Lake Tahoe Watershed	STREAM
Ice Lakes	LAKE

Blackwood Creek	STREAM
Blackwood Creek	STREAM
Blackwood Creek	STREAM
Ice Lakes	LAKE
Coon Creek Watershed	STREAM
Pleasant Grove Creek Watershed	STREAM
Pleasant Grove Creek Watershed	STREAM
Pleasant Grove Creek Watershed	STREAM
Pleasant Grove Creek Watershed	STREAM
Kaseberg Creek	STREAM
Kaseberg Creek	STREAM
Kaseberg Creek	STREAM
Lake Tahoe Watershed	STREAM
Lake Tahoe Watershed	STREAM
Lake Tahoe	LAKE
Lake Tahoe	LAKE
Lake Tahoe	LAKE
Middle Fork of the American River	RIVER
Secret Ravine	STREAM
Secret Ravine	STREAM
Dry Creek Watershed	STREAM
Dry Creek Watershed	STREAM
Auburn Ravine	STREAM
Dry Creek Watershed	STREAM
McKinney Creek	STREAM
McKinney Creek	STREAM
McKinney Creek	STREAM
McKinney Creek	STREAM
McKinney Creek	STREAM
McKinney Creek	STREAM
Ward Creek	STREAM
Auburn Ravine	STREAM
Serene Lakes	LAKE
Serene Lakes	LAKE
Serene Lakes	LAKE
Serene Lakes	LAKE
Ice Lakes	LAKE
Ice Lakes	LAKE
Ice Lakes	LAKE
Ice Lakes	LAKE
Bear Creek	STREAM
Bear Creek	STREAM
Bear Creek	STREAM
Bear Creek	STREAM
Dry Creek Watershed	STREAM
Dry Creek Watershed	STREAM
Dry Creek Watershed	STREAM

Dry Creek Watershed	STREAM
Dry Creek Watershed	STREAM
Dry Creek Watershed	STREAM
Dry Creek Watershed	STREAM
Ice Lakes	LAKE
Ice Lakes	LAKE
Ice Lakes	LAKE
Ice Lakes	LAKE
Ice Lakes	LAKE
Ice Lakes	LAKE
Ice Lakes	LAKE
Ice Lakes	LAKE
Ice Lakes	LAKE
Ice Lakes	LAKE
Truckee River	RIVER
Truckee River	RIVER
Truckee River	RIVER
Truckee River	RIVER
Squaw Creek	STREAM
Squaw Creek	STREAM
Squaw Creek	STREAM
Pleasant Grove Creek Watershed	STREAM
Pleasant Grove Creek Watershed	STREAM
Pleasant Grove Creek Watershed	STREAM
Pleasant Grove Creek Watershed	STREAM
Pleasant Grove Creek Watershed	STREAM
Pleasant Grove Creek Watershed	STREAM
South Yuba River Watershed	STREAM
South Yuba River Watershed	STREAM
South Yuba River Watershed	STREAM
South Yuba River Watershed	STREAM
South Yuba River Watershed	STREAM
Lake Tahoe	LAKE
Lake Tahoe	LAKE
Lake Tahoe	LAKE
Lake Tahoe	LAKE
Lake Tahoe	LAKE
Lake Tahoe	LAKE
Lake Tahoe	LAKE
Lake Tahoe	LAKE
Lake Tahoe	LAKE
Lake Tahoe	LAKE
Lake Tahoe	LAKE
Lake Tahoe	LAKE
Lake Tahoe	LAKE
Dry Creek	STREAM
Pleasant Grove Creek Watershed	STREAM
Pleasant Grove Creek Watershed	STREAM

Orchard Creek	STREAM
Orchard Creek	STREAM
Orchard Creek	STREAM
Orchard Creek	STREAM
Rock Creek	STREAM
Ophir Canal	CANAL
Auburn Ravine	STREAM
Pleasant Grove Creek	STREAM
Pleasant Grove Creek	STREAM
Dry Creek Watershed	STREAM
CANAL	CANAL
Curry Creek Watershed	STREAM
Pleasant Grove Creek Watershed	STREAM
Pleasant Grove Creek Watershed	STREAM
Pleasant Grove Creek	STREAM
Pleasant Grove Creek Watershed	STREAM
Pleasant Grove Creek Watershed	STREAM
Pleasant Grove Creek Watershed	STREAM
Coon Creek Watershed	STREAM
Squaw Creek	STREAM
Truckee River	RIVER
Truckee River	RIVER
Truckee River	RIVER
Truckee River	RIVER
Fulda Creek	STREAM
Pleasant Grove Creek Watershed	STREAM
Truckee River	RIVER
Truckee River	RIVER
Pleasant Grove Creek	STREAM
South Yuba River	RIVER
Ice Lakes	LAKE
Ice Lakes	LAKE
Ice Lakes	LAKE
Ice Lakes	LAKE
Ice Lakes	LAKE
Ice Lakes	LAKE
Ice Lakes	LAKE
Ice Lakes	LAKE
Ice Lakes	LAKE
Griff Creek	STREAM
Griff Creek	STREAM
Griff Creek	STREAM
Dry Creek	STREAM
Blackwood Creek	STREAM
North Fork of the American River Watershed	STREAM
North Fork of the American River Watershed	STREAM
Dry Creek Watershed	STREAM

CANAL	CANAL
CANAL	CANAL
Coon Creek Watershed	STREAM
Coon Creek Watershed	STREAM
Lake Mary	LAKE
Lake Mary	LAKE
Lake Mary	LAKE
CANAL	CANAL
Lake Mary	LAKE
Lake Mary	LAKE
Pleasant Grove Creek Watershed	STREAM
Pleasant Grove Creek Watershed	STREAM
Pleasant Grove Creek Watershed	STREAM
Pleasant Grove Creek Watershed	STREAM
Pleasant Grove Creek Watershed	STREAM
South Yuba River	RIVER
South Yuba River	RIVER
South Yuba River	RIVER
South Yuba River	RIVER
South Yuba River	RIVER
South Yuba River	RIVER
South Yuba River	RIVER
Martis Creek	STREAM
Ice Lakes	LAKE
Ice Lakes	LAKE
Ice Lakes	LAKE
Serene Lakes	LAKE
Serene Lakes	LAKE
Palisade Lake	LAKE
CANAL	CANAL
CANAL	CANAL
Pleasant Grove Creek Watershed	STREAM
Blackwood Creek	STREAM
Bear Creek	STREAM
Bear Creek	STREAM
Bear Creek	STREAM
Bear Creek	STREAM
Bear Creek	STREAM
Bear Creek	STREAM
Bear Creek	STREAM
Bear Creek	STREAM
Squaw Creek	STREAM
Curry Creek Watershed	STREAM
Curry Creek Watershed	STREAM
Antelope Creek	STREAM
Pleasant Grove Creek Watershed	STREAM
Pleasant Grove Creek Watershed	STREAM
Pleasant Grove Creek Watershed	STREAM
Pleasant Grove Creek Watershed	STREAM

Auburn Ravine Watershed	STREAM
Pleasant Grove Creek	STREAM
Secret Ravine	STREAM
Secret Ravine	STREAM
See Attachment D - Block 4	
See Attachment D - Block 4	
See Attachment D - Block 4	
See Attachment D - Block 4	
See Attachment D - Block 4	
See Attachment D - Block 4	
See Attachment D - Block 4	
See Attachment D - Block 5	
Dry Creek Watershed	STREAM
Dry Creek Watershed	STREAM
See Attachment D - Block 18	
See Attachment D - Block 18	
See Attachment D - Block 4	
See Attachment D - Block 4	
Shirland Canal	CANAL
Dry Creek Watershed	STREAM
Dry Creek Watershed	STREAM
Miners Ravine	STREAM
Miners Ravine	STREAM
Pleasant Grove Creek Watershed	STREAM
Pleasant Grove Creek Watershed	STREAM
Pleasant Grove Creek Watershed	STREAM
Pleasant Grove Creek Watershed	STREAM
Pleasant Grove Creek Watershed	STREAM
Pleasant Grove Creek Watershed	STREAM
Pleasant Grove Creek Watershed	STREAM
Pleasant Grove Creek Watershed	STREAM
Pleasant Grove Creek Watershed	STREAM
Pleasant Grove Creek Watershed	STREAM
Pleasant Grove Creek Watershed	STREAM
CANAL	CANAL
South Yuba River	RIVER
Kaseberg Creek	STREAM
Kaseberg Creek	STREAM
Kaseberg Creek	STREAM
Kaseberg Creek	STREAM
Kaseberg Creek	STREAM
Kaseberg Creek	STREAM
Strap Ravine	STREAM
Sixmile Valley	STREAM
Sixmile Valley	STREAM
Dry Creek Watershed	STREAM
Dry Creek Watershed	STREAM
Sixmile Valley	STREAM

Lake Mary	LAKE
Lake Mary	LAKE
Caps Ravine	STREAM
Bear Creek	STREAM
Pleasant Grove Creek Watershed	STREAM
Pleasant Grove Creek Watershed	STREAM
Pleasant Grove Creek Watershed	STREAM
Pleasant Grove Creek Watershed	STREAM
Auburn Ravine Watershed	STREAM
Auburn Ravine Watershed	STREAM
Kaseberg Creek	STREAM
Lake Tahoe	LAKE
Lake Tahoe	LAKE
Lake Tahoe	LAKE
Lake Tahoe	LAKE
Lake Tahoe	LAKE
Dry Creek Watershed	STREAM
Serene Lakes	LAKE
Palisade Lake	LAKE
Antelope Creek	STREAM
Black Canyon	STREAM
Miners Ravine	STREAM
See Attachment D - Block 18	
See Attachment D - Block 18	
See Attachment D - Block 3	
See Attachment D - Block 18	
See Attachment D - Block 18	
See Attachment D - Block 18	
See Attachment D - Block 18	
See Attachment D - Block 18	
See Attachment D - Block 18	
North Fork American River	RIVER
Pleasant Grove Creek Watershed	STREAM
Pleasant Grove Creek Watershed	STREAM
Pleasant Grove Creek Watershed	STREAM
Pleasant Grove Creek Watershed	STREAM
Squaw Creek	STREAM
Squaw Creek	STREAM
Squaw Creek	STREAM
Squaw Creek	STREAM
Squaw Creek	STREAM
Squaw Creek	STREAM
Squaw Creek	STREAM
Squaw Creek	STREAM
Squaw Creek	STREAM
South Yuba River	RIVER
Ice Lakes	LAKE
Ice Lakes	LAKE

Ice Lakes	LAKE
See Attachment D - Block 17	
See Attachment D - Block 17	
Bear Creek	STREAM
Truckee River	RIVER
Truckee River	RIVER
Truckee River	RIVER
Truckee River	RIVER
Blackwood Creek	STREAM
Blackwood Creek	STREAM
Bear Creek	STREAM
Bear Creek	STREAM
Bear Creek	STREAM
Bear Creek	STREAM
Bear Creek	STREAM
Bear Creek	STREAM
Bear Creek	STREAM
Bear Creek	STREAM
Bear Creek	STREAM
Bear Creek	STREAM
Bear Creek	STREAM
Bear Creek	STREAM
See Attachment D - Block 18	
See Attachment D - Block 18	
See Attachment D - Block 1	
See Attachment D - Block 1	
See Attachment D - Block 1	
See Attachment D - Block 1	
South Yuba River	RIVER
South Yuba River	RIVER
South Yuba River	RIVER
Blackwood Creek	STREAM
Blackwood Creek	STREAM
See Attachment D - Block 10	
See Attachment D - Block 10	
See Attachment D - Block 10	
See Attachment D - Block 10	
See Attachment D - Block 10	
See Attachment D - Block 10	
See Attachment D - Block 10	
See Attachment D - Block 12	
See Attachment D - Block 12	
See Attachment D - Block 17	
See Attachment D - Block 17	
See Attachment D - Block 17	
See Attachment D - Block 17	
See Attachment D - Block 17	

See Attachment D - Block 17	
See Attachment D - Block 17	
Ward Creek	STREAM
Ward Creek	STREAM
Ward Creek	STREAM
Ward Creek	STREAM
Coon Creek	STREAM
See Attachment D - Block 16	
See Attachment D - Block 16	
See Attachment D - Block 16	
Lake Tahoe Watershed	STREAM
See Attachment D - Block 10	
See Attachment D - Block 18	
See Attachment D - Block 1	
See Attachment D - Block 1	
See Attachment D - Block 1	
Coon Creek Watershed	STREAM
See Attachment D - Block 10	
See Attachment D - Block 10	
Squaw Creek	STREAM
Squaw Creek	STREAM
Squaw Creek	STREAM
Squaw Creek	STREAM
Wise Canal	CANAL
Truckee River	RIVER
Auburn Ravine	STREAM
Auburn Ravine	STREAM
Orr Creek	STREAM
Curry Creek Watershed	STREAM
Pleasant Grove Creek Watershed	STREAM
Pleasant Grove Creek Watershed	STREAM
Pleasant Grove Creek Watershed	STREAM
Pleasant Grove Creek Watershed	STREAM
Pleasant Grove Creek Watershed	STREAM
Pleasant Grove Creek Watershed	STREAM
Pleasant Grove Creek Watershed	STREAM
Pleasant Grove Creek Watershed	STREAM
Linda Creek	STREAM
Linda Creek	STREAM
Linda Creek	STREAM
Linda Creek	STREAM
Linda Creek	STREAM
Linda Creek	STREAM
Ward Creek	STREAM
Pleasant Grove Creek Watershed	STREAM
Pleasant Grove Creek Watershed	STREAM
Dry Creek Watershed	STREAM

Clover Valley Creek	STREAM
Yankee Slough Watershed	STREAM
North Ravine	STREAM
Miners Ravine	STREAM
Dry Creek	STREAM
Dry Creek	STREAM
Dry Creek Watershed	STREAM
Auburn Ravine Watershed	STREAM
Antelope Creek	STREAM
Auburn Ravine	STREAM
Auburn Ravine	STREAM
Wooley Creek	STREAM
Auburn Ravine	STREAM
Auburn Ravine Watershed	STREAM
Auburn Ravine	STREAM
Dutch Ravine	STREAM
Upper Bowman Canal	CANAL
Bear River Watershed	STREAM
Wooley Creek	STREAM
CANAL	CANAL

Date of Application	Applicator	Location
5/9/2012	Ortiz-Rodriguez, Everardo	#820 (38.798305 -121.269493)
5/9/2012	Ortiz-Rodriguez, Everardo	#820 (38.798305 -121.269493)
5/9/2012	Ortiz-Rodriguez, Everardo	#820 (38.798305 -121.269493)
5/9/2012	Ortiz-Rodriguez, Everardo	#5034 (38.803363 -121.281123)
5/9/2012	Ortiz-Rodriguez, Everardo	#5034 (38.803363 -121.281123)
5/9/2012	Ortiz-Rodriguez, Everardo	#5034 (38.803363 -121.281123)
5/9/2012	Ortiz-Rodriguez, Everardo	#5398 (38.787921 -121.250852)
5/9/2012	Ortiz-Rodriguez, Everardo	#5398 (38.787921 -121.250852)
5/9/2012	Ortiz-Rodriguez, Everardo	#5398 (38.787921 -121.250852)
5/17/2012	Embrey, Robyn	#17063 (39.303390 -120.380940)
5/17/2012	Embrey, Robyn	#17063 (39.303390 -120.380940)
5/17/2012	Long, Katherine	#17063 (39.303390 -120.380940)
5/17/2012	Embrey, Robyn	#26611 (39.313596 -120.328113)
5/17/2012	Embrey, Robyn	#26611 (39.313596 -120.328113)
5/17/2012	Long, Katherine	#26611 (39.313596 -120.328113)
5/17/2012	Embrey, Robyn	#26750 (39.308169 -120.336739)
5/17/2012	Embrey, Robyn	#26750 (39.308169 -120.336739)
5/17/2012	Long, Katherine	#26750 (39.308169 -120.336739)
5/17/2012	Embrey, Robyn	#150209 (39.314683 -120.329878)
5/17/2012	Embrey, Robyn	#150209 (39.314683 -120.329878)
5/17/2012	Long, Katherine	#150209 (39.314683 -120.329878)
5/18/2012	Long, Katherine	#26465 (39.209267 -120.201781)
5/18/2012	Long, Katherine	#26465 (39.209267 -120.201781)
5/18/2012	Embrey, Robyn	#26465 (39.209267 -120.201781)
5/24/2012	Embrey, Robyn	#16964 (39.147840 -120.178740)
5/24/2012	Embrey, Robyn	#16964 (39.147840 -120.178740)
5/24/2012	Embrey, Robyn	#16964 (39.147840 -120.178740)
5/29/2012	Long, Katherine	#24975 (39.304241 -120.385097)
5/29/2012	Long, Katherine	#24975 (39.304241 -120.385097)
5/29/2012	Long, Katherine	#24975 (39.304241 -120.385097)
5/30/2012	Long, Katherine	#23459 (39.303975 -120.385004)
5/30/2012	Long, Katherine	#23459 (39.303975 -120.385004)
5/30/2012	Long, Katherine	#23459 (39.303975 -120.385004)
5/31/2012	Embrey, Robyn	#17352 (39.303506 -120.390378)
5/31/2012	Embrey, Robyn	#17352 (39.303506 -120.390378)
5/31/2012	Long, Katherine	#17352 (39.303506 -120.390378)
5/31/2012	Ashley, Mike	#23509 (38.731950 -121.391350)
5/31/2012	Ashley, Mike	#23509 (38.731950 -121.391350)
5/31/2012	Ashley, Mike	#23509 (38.731950 -121.391350)

5/31/2012	Embrey, Robyn	#26777 (39.305496 -120.388184)
5/31/2012	Embrey, Robyn	#26777 (39.305496 -120.388184)
5/31/2012	Long, Katherine	#26777 (39.305496 -120.388184)
6/4/2012	Ortiz-Rodriguez, Everardo	#150386 (38.816685 -121.255224)
6/4/2012	Ortiz-Rodriguez, Everardo	#150386 (38.816685 -121.255224)
6/4/2012	Ortiz-Rodriguez, Everardo	#150386 (38.816685 -121.255224)
6/5/2012	Long, Katherine	#23923 (39.241186 -120.048680)
6/5/2012	Long, Katherine	#23923 (39.241186 -120.048680)
6/5/2012	Long, Katherine	#23923 (39.241186 -120.048680)
6/6/2012	Embrey, Robyn	#15958 (39.165856 -120.146133)
6/6/2012	Embrey, Robyn	#15958 (39.165856 -120.146133)
6/6/2012	Long, Katherine	#15958 (39.165856 -120.146133)
6/6/2012	Ortiz-Rodriguez, Everardo	#24165 (38.844759 -121.264767)
6/6/2012	Ortiz-Rodriguez, Everardo	#24165 (38.844759 -121.264767)
6/6/2012	Ortiz-Rodriguez, Everardo	#24165 (38.844759 -121.264767)
6/7/2012	Long, Katherine	#11600 (39.073970 -120.154779)
6/7/2012	Long, Katherine	#11600 (39.073970 -120.154779)
6/7/2012	Long, Katherine	#11600 (39.073970 -120.154779)
6/7/2012	Long, Katherine	#11966 (39.074139 -120.154556)
6/7/2012	Long, Katherine	#11966 (39.074139 -120.154556)
6/7/2012	Long, Katherine	#11966 (39.074139 -120.154556)
6/7/2012	Embrey, Robyn	#23786 (39.303379 -120.339603)
6/7/2012	Embrey, Robyn	#23786 (39.303379 -120.339603)
6/7/2012	Long, Katherine	#23786 (39.303379 -120.339603)
6/8/2012	Long, Katherine	#17047 (39.110660 -120.166930)
6/8/2012	Long, Katherine	#17047 (39.110660 -120.166930)
6/8/2012	Long, Katherine	#17047 (39.110660 -120.166930)
6/8/2012	Embrey, Robyn	#17445 (39.161774 -120.145688)
6/8/2012	Embrey, Robyn	#17445 (39.161774 -120.145688)
6/8/2012	Long, Katherine	#17445 (39.161774 -120.145688)
6/8/2012	Long, Katherine	#21225 (39.107460 -120.173250)
6/8/2012	Long, Katherine	#21225 (39.107460 -120.173250)
6/8/2012	Long, Katherine	#21225 (39.107460 -120.173250)
6/8/2012	Long, Katherine	#21433 (39.108885 -120.174122)
6/8/2012	Long, Katherine	#21433 (39.108885 -120.174122)
6/8/2012	Long, Katherine	#21433 (39.108885 -120.174122)
6/12/2012	Embrey, Robyn	#15956 (39.206700 -120.206630)
6/12/2012	Embrey, Robyn	#15956 (39.206700 -120.206630)
6/12/2012	Long, Katherine	#15956 (39.206700 -120.206630)
6/14/2012	Long, Katherine	#11966 (39.074139 -120.154556)
6/14/2012	Long, Katherine	#11966 (39.074139 -120.154556)
6/14/2012	Long, Katherine	#11966 (39.074139 -120.154556)
6/14/2012	Long, Katherine	#15956 (39.206700 -120.206630)
6/14/2012	Long, Katherine	#15956 (39.206700 -120.206630)
6/14/2012	Long, Katherine	#15956 (39.206700 -120.206630)
6/18/2012	Smith, Jason	#10552 (38.903260 -121.180830)
6/18/2012	Smith, Jason	#10552 (38.903260 -121.180830)

Control District - 2012 NPDES Veg

Application Info			
Name of Water Body	Type of Water Body	Description	Product Name
(#102970)	Stream	Applied to Low Area	Vectobac BTI-G
(#102970)	Stream	Applied to Low Area	Vectobac BTI-G
(#102970)	Stream	Applied to Low Area	
(#102970)	Stream	Applied to Low Area	Vectobac BTI-G
(#102970)	Stream	Applied to Low Area	Vectobac BTI-G
(#102970)	Stream	Applied to Low Area	
(#107095)	Stream	Applied to Stream	Vectobac BTI-G
(#107095)	Stream	Applied to Stream	Vectobac BTI-G
(#107095)	Stream	Applied to Stream	
Ice Lakes	Lake	Applied to Low Area	Vectobac BTI-G
Ice Lakes	Lake	Applied to Low Area	Vectobac BTI-G
Ice Lakes	Lake	Applied to Low Area	
Lake Mary	Lake	Applied to Low Area	Vectobac BTI-G
Lake Mary	Lake	Applied to Low Area	Vectobac BTI-G
Lake Mary	Lake	Applied to Low Area	
(#103868) South Yuba River	River	Applied to Low Area	Vectobac BTI-G
(#103868) South Yuba River	River	Applied to Low Area	Vectobac BTI-G
(#103868) South Yuba River	River	Applied to Low Area	
Lake Mary	Lake	Applied to Pond	Vectobac BTI-G
Lake Mary	Lake	Applied to Pond	Vectobac BTI-G
Lake Mary	Lake	Applied to Pond	
(#100724) Squaw Creek	Stream	Applied to Low Area	Agnique
(#100724) Squaw Creek	Stream	Applied to Low Area	Agnique
(#100724) Squaw Creek	Stream	Applied to Low Area	
(#100132)	Stream	Applied to Low Area	Vectobac BTI-G
(#100132)	Stream	Applied to Low Area	Vectobac BTI-G
(#100132)	Stream	Applied to Low Area	
Ice Lakes	Lake	Applied to Low Area	Vectobac BTI-G
Ice Lakes	Lake	Applied to Low Area	Vectobac BTI-G
Ice Lakes	Lake	Applied to Low Area	
Ice Lakes	Lake	Applied to Stream	Vectobac BTI-G
Ice Lakes	Lake	Applied to Stream	Vectobac BTI-G
Ice Lakes	Lake	Applied to Stream	
Ice Lakes	Lake	Applied to Stream	Vectobac BTI-G
Ice Lakes	Lake	Applied to Stream	Vectobac BTI-G
Ice Lakes	Lake	Applied to Stream	
(#101652)	Stream	Applied to Ditch	Vectobac BTI-G
(#101652)	Stream	Applied to Ditch	Vectobac BTI-G
(#101652)	Stream	Applied to Ditch	

Serene Lakes	Lake	Applied to Stream	Vectobac BTI-G
Serene Lakes	Lake	Applied to Stream	Vectobac BTI-G
Serene Lakes	Lake	Applied to Stream	
(#102597) Black Canyon	Stream	Applied to Stream	Vectobac BTI-G
(#102597) Black Canyon	Stream	Applied to Stream	Vectobac BTI-G
(#102597) Black Canyon	Stream	Applied to Stream	
Lake Tahoe	Lake	Applied to Ditch	Vectobac BTI-G
Lake Tahoe	Lake	Applied to Ditch	Vectobac BTI-G
Lake Tahoe	Lake	Applied to Ditch	
(#100717) Truckee River	River	Applied to Low Area	Vectobac BTI-G
(#100717) Truckee River	River	Applied to Low Area	Vectobac BTI-G
(#100717) Truckee River	River	Applied to Low Area	
(#101453) Orchard Creek	Stream	Applied to Low Area	Vectobac BTI-G
(#101453) Orchard Creek	Stream	Applied to Low Area	Vectobac BTI-G
(#101453) Orchard Creek	Stream	Applied to Low Area	
(#100120)	Stream	Applied to Ditch	Vectobac BTI-G
(#100120)	Stream	Applied to Ditch	Vectobac BTI-G
(#100120)	Stream	Applied to Ditch	
(#100120)	Stream	Applied to Wetland	Vectobac BTI-G
(#100120)	Stream	Applied to Wetland	Vectobac BTI-G
(#100120)	Stream	Applied to Wetland	
(#100506)	Stream	Applied to Low Area	Vectobac BTI-G
(#100506)	Stream	Applied to Low Area	Vectobac BTI-G
(#100506)	Stream	Applied to Low Area	
(#100457) Blackwood Creek	Stream	Applied to Low Area	Vectobac BTI-G
(#100457) Blackwood Creek	Stream	Applied to Low Area	Vectobac BTI-G
(#100457) Blackwood Creek	Stream	Applied to Low Area	
(#100717) Truckee River	River	Applied to Wetland	Vectobac BTI-G
(#100717) Truckee River	River	Applied to Wetland	Vectobac BTI-G
(#100717) Truckee River	River	Applied to Wetland	
(#100457) Blackwood Creek	Stream	Applied to Low Area	Agnique
(#100457) Blackwood Creek	Stream	Applied to Low Area	Agnique
(#100457) Blackwood Creek	Stream	Applied to Low Area	
(#100457) Blackwood Creek	Stream	Applied to Stream	Vectobac BTI-G
(#100457) Blackwood Creek	Stream	Applied to Stream	Vectobac BTI-G
(#100457) Blackwood Creek	Stream	Applied to Stream	
(#100724) Squaw Creek	Stream	Applied to Low Area	Vectobac BTI-G
(#100724) Squaw Creek	Stream	Applied to Low Area	Vectobac BTI-G
(#100724) Squaw Creek	Stream	Applied to Low Area	
(#100120)	Stream	Applied to Wetland	Vectobac BTI-G
(#100120)	Stream	Applied to Wetland	Vectobac BTI-G
(#100120)	Stream	Applied to Wetland	
(#100724) Squaw Creek	Stream	Applied to Low Area	Vectobac BTI-G
(#100724) Squaw Creek	Stream	Applied to Low Area	Vectobac BTI-G
(#100724) Squaw Creek	Stream	Applied to Low Area	
(#105681) Auburn Ravine	Stream	Applied to Low Area	Vectobac BTI-G
(#105681) Auburn Ravine	Stream	Applied to Low Area	Vectobac BTI-G

MONITORING Information				
Time of monitoring	Monitoring Date	Time	Name(s) of personnel	Overhead Conditions
Background	5/9/2012	1:56:00 PM	Ortiz-Rodriguez, Everardo	ClearOrSunny
Event	5/9/2012	2:07:00 PM	Ortiz-Rodriguez, Everardo	ClearOrSunny
Post-Event	5/17/2012	2:41:00 PM	Ortiz-Rodriguez, Everardo	ClearOrSunny
Background	5/9/2012	2:31:00 PM	Ortiz-Rodriguez, Everardo	ClearOrSunny
Event	5/9/2012	2:40:00 PM	Ortiz-Rodriguez, Everardo	ClearOrSunny
Post-Event	5/17/2012	2:27:00 PM	Ortiz-Rodriguez, Everardo	ClearOrSunny
Background	5/9/2012	1:26:00 PM	Ortiz-Rodriguez, Everardo	ClearOrSunny
Event	5/9/2012	1:36:00 PM	Ortiz-Rodriguez, Everardo	ClearOrSunny
Post-Event	5/17/2012	1:30:00 PM	Ortiz-Rodriguez, Everardo	ClearOrSunny
Background	2012-05-17	11:00 AM	Embrey, Robyn	PartlyCloudy
Event	2012-05-17	11:10 AM	Embrey, Robyn	PartlyCloudy
Post-Event	2012-06-04	9:00 AM	Long, Katherine	Overcast
Background	2012-05-17	10:04 AM	Embrey, Robyn	PartlyCloudy
Event	2012-05-17	10:05 AM	Embrey, Robyn	PartlyCloudy
Post-Event	2012-06-04	1:50 PM	Long, Katherine	Overcast
Background	2012-05-17	10:10 AM	Embrey, Robyn	PartlyCloudy
Event	2012-05-17	10:25 AM	Embrey, Robyn	PartlyCloudy
Post-Event	2012-06-04	1:35 PM	Long, Katherine	Overcast
Event	2012-05-17	10:00 AM	Embrey, Robyn	PartlyCloudy
Background	2012-05-17	9:50 AM	Embrey, Robyn	PartlyCloudy
Post-Event	2012-06-04	1:20 PM	Long, Katherine	Overcast
Background	2012-05-18	8:15 AM	Long, Katherine	ClearOrSunny
Event	2012-05-18	8:25 AM	Long, Katherine	ClearOrSunny
Post-Event	2012-05-23	2:10 PM	Embrey, Robyn	ClearOrSunny
Background	2012-05-24	11:35 AM	Embrey, Robyn	ClearOrSunny
Event	2012-05-24	11:45 AM	Embrey, Robyn	ClearOrSunny
Post-Event	2012-05-29	9:10 AM	Embrey, Robyn	ClearOrSunny
Background	2012-05-29	2:05 PM	Long, Katherine	ClearOrSunny
Event	2012-05-29	2:15 PM	Long, Katherine	ClearOrSunny
Post-Event	2012-06-04	8:50 AM	Long, Katherine	Overcast
Background	2012-05-31	1:55 PM	Long, Katherine	ClearOrSunny
Event	2012-05-31	2:05 PM	Long, Katherine	ClearOrSunny
Post-Event	2012-06-04	8:40 AM	Long, Katherine	Overcast
Background	2012-05-31	2:00 PM	Embrey, Robyn	ClearOrSunny
Event	2012-05-31	2:05 PM	Embrey, Robyn	ClearOrSunny
Post-Event	2012-06-04	9:20 AM	Long, Katherine	Overcast
Background	2012-05-31	11:18 AM	Ashley, Mike	ClearOrSunny
Event	2012-05-31	11:28 AM	Ashley, Mike	ClearOrSunny
Post-Event	2012-06-22	8:46 AM	Ashley, Mike	ClearOrSunny

Background	2012-05-31	12:00 PM Embrey, Robyn	ClearOrSunny
Event	2012-05-31	12:50 PM Embrey, Robyn	ClearOrSunny
Post-Event	2012-06-04	9:35 AM Long, Katherine	Overcast
Background	2012-06-05	2:16 PM Ortiz-Rodriguez, Everardo	PartlyCloudy
Event	2012-06-05	2:25 AM Ortiz-Rodriguez, Everardo	PartlyCloudy
Post-Event	2012-06-11	1:10 PM Ortiz-Rodriguez, Everardo	ClearOrSunny
Background	2012-06-05	1:40 PM Long, Katherine	Overcast
Event	2012-06-05	1:45 PM Long, Katherine	PartlyCloudy
Post-Event	2012-06-14	2:40 PM Long, Katherine	ClearOrSunny
Background	2012-06-06	1:05 PM Embrey, Robyn	ClearOrSunny
Event	2012-06-06	1:35 PM Embrey, Robyn	ClearOrSunny
Post-Event	2012-06-14	2:05 PM Long, Katherine	ClearOrSunny
Background	2012-06-06	2:07 PM Ortiz-Rodriguez, Everardo	ClearOrSunny
Event	2012-06-06	2:21 PM Ortiz-Rodriguez, Everardo	ClearOrSunny
Post-Event	2012-06-11	12:25 PM Ortiz-Rodriguez, Everardo	ClearOrSunny
Background	2012-06-07	12:00 PM Long, Katherine	ClearOrSunny
Event	2012-06-07	12:10 PM Long, Katherine	ClearOrSunny
Post-Event	2012-06-14	12:05 PM Long, Katherine	ClearOrSunny
Background	2012-06-07	11:30 AM Long, Katherine	ClearOrSunny
Event	2012-06-07	11:45 AM Long, Katherine	ClearOrSunny
Post-Event	2012-06-14	11:35 AM Long, Katherine	ClearOrSunny
Background	2012-06-07	8:30 AM Embrey, Robyn	ClearOrSunny
Event	2012-06-07	9:45 AM Embrey, Robyn	ClearOrSunny
Post-Event	2012-06-14	9:45 AM Long, Katherine	ClearOrSunny
Background	2012-06-08	8:50 AM Long, Katherine	ClearOrSunny
Event	2012-06-08	9:00 AM Long, Katherine	ClearOrSunny
Post-Event	2012-06-14	1:45 PM Long, Katherine	ClearOrSunny
Background	2012-06-08	9:00 AM Embrey, Robyn	ClearOrSunny
Event	2012-06-08	9:25 AM Embrey, Robyn	ClearOrSunny
Post-Event	2012-06-14	2:15 PM Long, Katherine	ClearOrSunny
Background	2012-06-08	10:30 AM Long, Katherine	ClearOrSunny
Event	2012-06-08	10:40 AM Long, Katherine	ClearOrSunny
Post-Event	2012-06-14	1:10 PM Long, Katherine	ClearOrSunny
Background	2012-06-08	11:15 AM Long, Katherine	ClearOrSunny
Event	2012-06-08	11:20 AM Long, Katherine	ClearOrSunny
Post-Event	2012-06-14	1:20 PM Long, Katherine	ClearOrSunny
Background	2012-06-12	2:00 PM Embrey, Robyn	ClearOrSunny
Event	2012-06-12	2:10 PM Embrey, Robyn	ClearOrSunny
Post-Event	2012-06-14	10:20 AM Long, Katherine	ClearOrSunny
Background	2012-06-14	11:40 AM Long, Katherine	ClearOrSunny
Event	2012-06-14	11:50 AM Long, Katherine	ClearOrSunny
Post-Event	2012-07-09	11:35 AM Long, Katherine	ClearOrSunny
Background	2012-06-14	10:25 AM Long, Katherine	ClearOrSunny
Event	2012-06-14	10:30 AM Long, Katherine	ClearOrSunny
Post-Event	2012-06-20	10:15 AM Long, Katherine	ClearOrSunny
Background	2012-06-18	2:20 PM Smith, Jason	ClearOrSunny
Event	2012-06-18	2:22 PM Smith, Jason	ClearOrSunny

Weather Conditions					
Precipitation	Wind	Air Temperature	Water Color	Water Clarity	Floating/Suspended Matter
None	LightBreeze	Hot	Colorless	Clear	Observed
None	LightBreeze	Hot	Colorless	Clear	Observed
None	LightBreeze	WarmOrMild	Other Dry	Clear	Not Observed
None	Calm	Hot	Colorless	Clear	Observed
None	Calm	Hot	Colorless	Clear	Observed
None	LightBreeze	WarmOrMild	Colorless	Cloudy	Observed
None	Calm	Hot	Colorless	Clear	Not Observed
None	Calm	Hot	Colorless	Clear	Not Observed
None	LightBreeze	WarmOrMild	Colorless	Clear	Not Observed
None	Gusty	Cool	Colorless	Clear	Observed
None	Gusty	Cool	Colorless	Clear	Observed
Drizzle	LightBreeze	Cool	Brown	Clear	Observed
None	Gusty	Cool	Colorless	Clear	Observed
None	Gusty	Cool	Colorless	Clear	Observed
Snow	Gusty	Cool	Colorless	Clear	Observed
None	Gusty	Cool	Colorless	Clear	Observed
None	Gusty	Cool	Colorless	Clear	Observed
Steady Rain	Gusty	Cool	Colorless	Clear	Not Observed
None	Gusty	Cool	Colorless	Clear	Observed
None	Gusty	Cool	Colorless	Clear	Observed
Steady Rain	Gusty	Cool	Colorless	Clear	Observed
None	Calm	Cool	Green	Clear	Observed
None	Calm	Cool	Green	Clear	Observed
None	LightBreeze	WarmOrMild	Green	Clear	Observed
None	LightBreeze	WarmOrMild	Colorless	Clear	Observed
None	LightBreeze	WarmOrMild	Colorless	Clear	Observed
None	Calm	WarmOrMild	Colorless	Clear	Observed
None	LightBreeze	WarmOrMild	Other Red	Cloudy	Observed
None	LightBreeze	WarmOrMild	Other Red	Cloudy	Observed
Drizzle	LightBreeze	Cool	Brown	Cloudy	Observed
None	Calm	WarmOrMild	Yellow	Clear	Observed
None	Calm	WarmOrMild	Yellow	Clear	Observed
Drizzle	LightBreeze	Cool	Brown	Clear	Observed
None	LightBreeze	WarmOrMild	Colorless	Clear	Not Observed
None	LightBreeze	WarmOrMild	Colorless	Clear	Not Observed
Drizzle	LightBreeze	Cool	Brown	Clear	Observed
None	Calm	WarmOrMild	Brown	Murky	Observed
None	Calm	WarmOrMild	Colorless	Murky	Observed
None	LightBreeze	Cool	Colorless	Clear	Not Observed

None	LightBreeze	WarmOrMild	Colorless	Clear	Observed
None	LightBreeze	WarmOrMild	Colorless	Clear	Observed
Drizzle	LightBreeze	Cool	Other red	Clear	Observed
Intermittent Showers	LightBreeze	Cool	Colorless	Clear	Not Observed
Intermittent Showers	LightBreeze	Cool	Colorless	Clear	Not Observed
None	Calm	Hot	Colorless	Clear	Not Observed
Snow	Calm	Cool	Brown	Clear	Observed
Snow	Calm	Cool	Brown	Clear	Observed
None	LightBreeze	WarmOrMild	Colorless	Clear	Observed
None	LightBreeze	WarmOrMild	Colorless	Clear	Observed
None	LightBreeze	WarmOrMild	Colorless	Clear	Observed
None	LightBreeze	WarmOrMild	Colorless	Clear	Observed
None	Calm	Hot	Colorless	Clear	Observed
None	Calm	Hot	Colorless	Clear	Observed
None	Calm	Hot	Colorless	Clear	Observed
None	LightBreeze	WarmOrMild	Colorless	Clear	Not Observed
None	LightBreeze	WarmOrMild	Colorless	Clear	Not Observed
None	LightBreeze	WarmOrMild	Colorless	Clear	Not Observed
None	LightBreeze	Cool	Brown	Clear	Not Observed
None	LightBreeze	Cool	Brown	Clear	Not Observed
None	Calm	WarmOrMild	Brown	Clear	Observed
None	LightBreeze	WarmOrMild	Brown	Clear	Observed
None	LightBreeze	WarmOrMild	Brown	Clear	Observed
None	LightBreeze	Cool	Colorless	Clear	Observed
None	LightBreeze	WarmOrMild	Brown	Clear	Observed
None	LightBreeze	WarmOrMild	Brown	Clear	Observed
None	LightBreeze	WarmOrMild	Colorless	Clear	Observed
None	LightBreeze	WarmOrMild	Brown	Cloudy	Observed
None	LightBreeze	WarmOrMild	Brown	Cloudy	Observed
None	LightBreeze	WarmOrMild	Colorless	Clear	Observed
None	Gusty	Cool	Brown	Clear	Observed
None	Gusty	WarmOrMild	Brown	Clear	Observed
None	LightBreeze	WarmOrMild	Other Dry	Clear	Not Observed
None	Gusty	WarmOrMild	Brown	Clear	Observed
None	Gusty	WarmOrMild	Brown	Clear	Observed
None	Calm	WarmOrMild	Colorless	Clear	Not Observed
None	LightBreeze	WarmOrMild	Brown	Cloudy	Observed
None	LightBreeze	WarmOrMild	Brown	Cloudy	Observed
None	LightBreeze	WarmOrMild	Brown	Cloudy	Observed
None	Calm	WarmOrMild	Brown	Clear	Observed
None	Calm	WarmOrMild	Brown	Clear	Observed
None	Calm	WarmOrMild	Brown	Murky	Observed
None	LightBreeze	WarmOrMild	Brown	Cloudy	Observed
None	LightBreeze	WarmOrMild	Brown	Cloudy	Observed
None	Calm	WarmOrMild	Brown	Cloudy	Observed
None	LightBreeze	Hot	Brown	Murky	Not Observed
None	LightBreeze	Hot	Brown	Murky	Not Observed

Visual Observation

Bottom Deposits	Aquatic Life	Water Surface Oils	Fungi, Slimes or objectionable growths	Potential Nuisance Conditions
Observed	Not Observed	None	Not Observed	
Observed	Not Observed	None	Not Observed	
Not Observed	Not Observed	Other Dry	Not Observed	
Observed	Observed	Films	Observed	
Observed	Observed	Films	Observed	
Not Observed	Not Observed	Films	Observed	
Not Observed	Observed	Films	Observed	
Not Observed	Observed	Films	Observed	
Observed	Not Observed	None	Not Observed	
Observed	Observed	None	Not Observed	
Observed	Observed	None	Not Observed	
Observed	Observed	None	Not Observed	
Observed	Observed	None	Not Observed	
Observed	Observed	None	Not Observed	
Observed	Not Observed	None	Not Observed	
Observed	Observed	Films	Not Observed	
Observed	Observed	Films	Not Observed	
Observed	Not Observed	None	Not Observed	
Observed	Observed	None	Not Observed	
Observed	Observed	None	Not Observed	
Observed	Observed	None	Not Observed	
Observed	Observed	None	Observed	grn algae
Observed	Observed	Coatings	Observed	grn algae
Observed	Observed	None	Not Observed	
Not Observed	Observed	None	Not Observed	
Not Observed	Observed	None	Not Observed	
Not Observed	Observed	None	Not Observed	
Observed	Observed	Sheen	Not Observed	
Observed	Observed	Sheen	Not Observed	
Observed	Not Observed	Sheen	Not Observed	
Observed	Observed	Films	Not Observed	
Observed	Observed	Films	Not Observed	
Observed	Observed	Films	Observed	
Observed	Observed	None	Not Observed	
Observed	Observed	None	Not Observed	
Observed	Not Observed	Films	Not Observed	
Observed	Observed	None	Not Observed	
Observed	Observed	None	Not Observed	
Not Observed	Not Observed	None	Not Observed	

Observed	Observed	None	Not Observed	
Observed	Observed	None	Not Observed	
Observed	Observed	Films	Observed	red algae
Not Observed	Observed	None	Not Observed	
Not Observed	Observed	None	Not Observed	
Not Observed	Observed	Films	Not Observed	
Observed	Observed	None	Observed	Green Algae
Observed	Observed	None	Observed	Green Algae
Observed	Observed	None	Observed	Green Algae
Observed	Observed	Sheen	Not Observed	
Observed	Observed	Sheen	Not Observed	
Observed	Observed	None	Not Observed	
Not Observed	Not Observed	Films	Observed	
Not Observed	Not Observed	Films	Observed	
Not Observed	Not Observed	Films	Observed	
Observed	Observed	None	Not Observed	
Observed	Observed	None	Not Observed	
Observed	Observed	None	Not Observed	
Observed	Observed	None	Observed	Grn algae
Observed	Observed	None	Observed	Grn algae
Observed	Observed	None	Observed	
Observed	Observed	Flecks	Not Observed	
Observed	Observed	Flecks	Not Observed	
Observed	Observed	None	Not Observed	
Observed	Observed	None	Not Observed	
Observed	Observed	None	Not Observed	
Observed	Observed	None	Not Observed	
Observed	Observed	Gloss	Observed	
Observed	Observed	Gloss	Observed	
Observed	Observed	None	Not Observed	
Observed	Observed	Films	Not Observed	
Observed	Observed	Films	Not Observed	
Not Observed	Not Observed	None	Not Observed	
Observed	Observed	None	Not Observed	
Observed	Observed	None	Not Observed	
Observed	Observed	None	Not Observed	
Observed	Observed	Films	Observed	green algae
Observed	Observed	Films	Observed	green algae
Observed	Observed	Slick	Observed	algae
Observed	Observed	None	Observed	
Observed	Observed	None	Observed	
Not Observed	Observed	None	Observed	Algae
Observed	Observed	Slick	Observed	algae
Observed	Observed	Slick	Observed	algae
Observed	Observed	Coatings	Not Observed	
Observed	Not Observed	None	Not Observed	
Observed	Observed	None	Not Observed	

Id/Block_Name	1 Sheridan	2
Unique_ID/Water_Name	105672 Yankee Slough Watershed	106251
	100556 Yankee Slough Watershed	
	104343 Canal	

Critter Creek	3 Shaw and Short	4
Markham Ravine	105514 Markham Ravine	106815 106816 106817 106818 106823 106824 106825 106826 106827 104474

Lincoln #1 - Log Decks	5	Lincoln #2 - Lakeside/Third	6
Markham Ravine Watershed	106815	Markham Ravine Watershed	106815
Markham Ravine Watershed	106816	Markham Ravine Watershed	106816
Markham Ravine Watershed	106817	Markham Ravine Watershed	106817
Markham Ravine Watershed	106818	Markham Ravine Watershed	106818
Markham Ravine Watershed	106823	Markham Ravine Watershed	106823
Markham Ravine Watershed	106824	Markham Ravine Watershed	106824
Markham Ravine Watershed	106825	Markham Ravine Watershed	106825
Markham Ravine Watershed	106827	Markham Ravine Watershed	106827
Markham Ravine Watershed	104474	Markham Ravine	104474
Markham Ravine			104005

Lincoln #3 - Venture/First/O st	7 Ferrari Ranch	8
Markham Ravine Watershed	105906 Auburn Ravine Watershed	106801
Markham Ravine Watershed	104652 Ingrahm Slough	104127
Markham Ravine Watershed	104653 Ingrahm Slough	104128
Markham Ravine Watershed	104655 Ingrahm Slough	105916
Markham Ravine Watershed	104656 Auburn Ravine Watershed	105917
Markham Ravine Watershed	104657 Canal	106828
Markham Ravine Watershed	104658 Auburn Ravine Watershed	106270
Markham Ravine Watershed		106422
Markham Ravine		106423
Markham Ravine Watershed		106424
		106425
		106426
		106429
		106430
		106451
		106452
		103953
		103954
		107264
		210981
		107265

Fiddymment Farms**11 Sun City Roseville****12**

Pleasant Grove Creek Watershed	105490 Pleasant Grove Creek Watershed	101063
Pleasant Grove Creek	105192 Kaseberg Creek	101064
Curry Creek Watershed	106420 Curry Creek Watershed	107223
Curry Creek Watershed	106421 Curry Creek Watershed	107237
Pleasant Grove Creek	106463 Pleasant Grove Creek Watershed	107238
Kaseberg Creek	106465 Pleasant Grove Creek Watershed	107239
Pleasant Grove Creek Watershed	106466 Pleasant Grove Creek Watershed	107240
Kaseberg Creek	106467 Kaseberg Creek	107241
Pleasant Grove Creek	106621 Pleasant Grove Creek Watershed	107242
Pleasant Grove Creek Watershed	106623 Kaseberg Creek	107243
Pleasant Grove Creek Watershed	106624 Pleasant Grove Creek Watershed	107244
Pleasant Grove Creek Watershed	106625 Kaseberg Creek	107245
	106626 Pleasant Grove Creek Watershed	107246
	106627 Kaseberg Creek	107247
	106628 Pleasant Grove Creek Watershed	107248
	106629 Kaseberg Creek	107249
	106633 Pleasant Grove Creek Watershed	107250
		107251
		107252
		107253
		107254
		107255
		107256
		107257
		107258
		107259

Morgan Creek #2 - Walerga/Atki	13	Elverta/Locust Rd	14
Dry Creek Watershed	101024	Steelhead Creek Watershed	103486
Dry Creek	101025	Steelhead Creek Watershed	
Dry Creek Watershed	101089	Steelhead Creek Watershed	
Dry Creek	101873	Steelhead Creek Watershed	
Dry Creek Watershed	101876	Steelhead Creek Watershed	
Dry Creek Watershed	101888	Steelhead Creek Watershed	
Dry Creek Watershed	101892	Steelhead Creek Watershed	
Dry Creek Watershed	101894	Steelhead Creek Watershed	
Dry Creek Watershed	101895	Steelhead Creek Watershed	
Dry Creek			
Dry Creek Watershed			
Dry Creek Watershed			
Dry Creek Watershed			
Dry Creek Watershed			
Dry Creek Watershed			
Dry Creek			
Dry Creek Watershed			
Dry Creek Watershed			
Dry Creek Watershed			
Dry Creek Watershed			
Dry Creek Watershed			
Dry Creek			
Dry Creek Watershed			
Dry Creek Watershed			
Dry Creek Watershed			
Dry Creek			

Neighbor Ln Area	15 Log Decks - Lakeside/Nicolaus	16
Markham Ravine Watershed	106815 Markham Ravine Watershed	106815
	106816 Markham Ravine Watershed	106816
	106817 Markham Ravine Watershed	106817
	106818 Markham Ravine Watershed	106818
	106823 Markham Ravine Watershed	106819
	106824 Markham Ravine Watershed	106820
	104474 Markham Ravine	106821
		106822
		106823
		106824
		106825
		106826
		106827
		104474
		104871

Lincoln #4 - Aviation/Fifth	17	Lincoln #5-West of 65	18
Markham Ravine Watershed	106818	Markham Ravine Watershed	101063
Markham Ravine Watershed	106819	Markham Ravine	101063
Markham Ravine Watershed	106820	Markham Ravine Watershed	107249
Markham Ravine Watershed	106821	Markham Ravine	107250
Markham Ravine	106822	Markham Ravine	107251
Markham Ravine Watershed	106823	Markham Ravine Watershed	107252
Markham Ravine	106824	Markham Ravine Watershed	107253
Markham Ravine	106825	Markham Ravine Watershed	107254
Markham Ravine Watershed	106826	Markham Ravine Watershed	107255
Markham Ravine Watershed	106827	Markham Ravine Watershed	107256
Markham Ravine Watershed	104474	Markham Ravine	107257
Markham Ravine Watershed	104871	Markham Ravine Watershed	107258
Markham Ravine Watershed	100596	Auburn Ravine	107259
Markham Ravine	100597	Auburn Ravine Watershed	
Markham Ravine Watershed	100598	Auburn Ravine Watershed	
	100599	Auburn Ravine Watershed	
	100600	Auburn Ravine	
	100601	Auburn Ravine Watershed	
	100602	Auburn Ravine Watershed	
	100603	Auburn Ravine	
	100604	Canal	
	100605	Auburn Ravine Watershed	
	100606	Auburn Ravine Watershed	
	105906	Auburn Ravine Watershed	
	104650	Canal	
	104652	Ingrahm Slough	
	104655	Ingrahm Slough	
	104656	Auburn Ravine Watershed	
	104657	Canal	
	104658	Auburn Ravine Watershed	
	104005	Markham Ravine Watershed	

Morgan Creek #1 - Walerga/Cook-Riolo**19 Aerial Adulticide**

Dry Creek Watershed	100352 Auburn Ravine Watershed
Dry Creek	100614 Auburn Ravine
Dry Creek	100794 Curry Creek Watershed
Dry Creek Watershed	100795 Curry Creek
Dry Creek Watershed	100796 Curry Creek
Dry Creek Watershed	100797 Curry Creek Watershed
Dry Creek Watershed	100798 Curry Creek
Dry Creek Watershed	100805 Steelhead Creek Watershed
Dry Creek	100848 Canal
Dry Creek Watershed	101024 Steelhead Creek Watershed
Dry Creek Watershed	101025 Steelhead Creek Watershed
Dry Creek Watershed	101088 Steelhead Creek Watershed
Dry Creek	101089 Steelhead Creek Watershed
	101236 Canal
	101360 Markham Ravine Watershed
	101362 Markham Ravine Watershed
	101386 Canal
	101389 Canal
	101390 Canal
	101391 Canal
	101392 Canal
	101393 Canal
	101299 Pleasant Grove Creek Watershed
	101300 Pleasant Grove Creek Watershed
	101326 Coon Creek
	101327 Coon Creek
	101328 Coon Creek
	101329 Coon Creek
	101330 Coon Creek
	101332 Coon Creek
	101333 Coon Creek
	101335 Coon Creek Watershed
	101339 Coon Creek Watershed
	101340 Coon Creek Watershed
	101341 Coon Creek Watershed
	101342 Coon Creek Watershed
	101343 Coon Creek Watershed
	101344 Coon Creek Watershed
	101350 Markham Ravine
	101351 Markham Ravine Watershed
	101354 Canal
	101356 Markham Ravine Watershed
	101358 Markham Ravine Watershed
	101394 Canal
	101395 Canal
	101396 Canal

101446 King Slough
101568 South Sutter Ditch
101569 Canal
101756 Bear River Watershed
101757 Canal
101758 Bear River
101760 Canal
106728 Bear River Watershed
106729 Canal
106730 Canal
106731 Bear River Watershed
106732 Bear River
106733 Bear River
104059 Canal
105862 Yankee Slough
106799 Canal
106800 Canal
106801 King Slough
104127 Pleasant Grove Creek Watershed
104128 Pleasant Grove Creek Watershed
104129 Canal
105909 Inghram Slough
105910 Orchard Creek
105911 Auburn Ravine Watershed
105912 Auburn Ravine Watershed
105913 Auburn Ravine Watershed
105915 Orchard Creek
105916 Auburn Ravine Watershed
105917 Auburn Ravine Watershed
105919 Auburn Ravine Watershed
106828 Pleasant Grove Creek Watershed
106829 Canal
106837 Canal
106842 Coon Creek
106843 Canal
106844 Coon Creek
106078 Orchard Creek
106079 Orchard Creek
106080 Orchard Creek
106081 Orchard Creek
104343 Canal
104344 Canal
104345 Canal
104371 Markham Ravine Watershed
104374 Canal
106230 Markham Ravine Watershed
106231 Canal

106232 Markham Ravine Watershed
106233 Markham Ravine
106237 Markham Ravine
106238 Markham Ravine
106242 Markham Ravine
106243 Markham Ravine
106244 Canal
106245 Markham Ravine
106246 Markham Ravine
106247 Markham Ravine
106248 Markham Ravine
106250 Markham Ravine
106251 Markham Ravine
106252 Treatment Pond Runoff
106253 Treatment Pond Runoff
106268 Auburn Ravine Watershed
106269 Auburn Ravine Watershed
106270 Auburn Ravine Watershed
106271 Orchard Creek
106272 Auburn Ravine
106273 Auburn Ravine
106274 Auburn Ravine
106275 Auburn Ravine Watershed
106276 Auburn Ravine Watershed
106277 Auburn Ravine Watershed
105489 South Branch Pleasant Grove Creek
105490 Pleasant Grove Creek Watershed
105491 Pleasant Grove Creek
106362 Canal
106363 Canal
106364 Coon Creek Watershed
104604 Yankee Slough Watershed
105504 Yankee Slough Watershed
105514 Markham Ravine
105515 Markham Ravine Watershed
105518 Canal
105519 Canal
105520 Canal
105521 Canal
105522 Canal
105523 Canal
105526 Canal
106417 Curry Creek Watershed
106422 Canal
106423 Canal
106424 Canal
106425 Canal

106426 Canal
106429 Canal
106430 South Sutter Ditch
106431 South Sutter Ditch
106432 Canal
106433 Canal
106434 Canal
106449 Pleasant Grove Creek Watershed
106450 Pleasant Grove Creek
106451 King Slough
103759 Pleasant Grove Creek Watershed
103776 Pleasant Grove Creek Watershed
103777 Curry Creek
103785 Markham Ravine Watershed
104700 Pleasant Grove Creek
106452 Cross Canal Watershed
106453 King Slough
106454 Canal
106455 Canal
106456 Canal
105667 Pleasant Grove Creek Watershed
105672 Yankee Slough Watershed
999999 JUNK
106562 Treatment Pond Runoff
106563 Canal
106565 Markham Ravine
104803 Orchard Creek
104804 Orchard Creek
104805 Orchard Creek
105708 Canal
105709 Canal
106627 Kaseberg Creek
106628 Pleasant Grove Creek Watershed
106629 Kaseberg Creek
106630 Pleasant Grove Creek
103953 Pleasant Grove Creek Watershed
103954 Pleasant Grove Creek Watershed
104886 Yankee Slough Watershed
104888 Yankee Slough Watershed
104889 Yankee Slough Watershed
104890 Yankee Slough
104891 Yankee Slough Watershed
104892 Yankee Slough Watershed
104893 Yankee Slough Watershed
106633 Pleasant Grove Creek Watershed
106634 Pleasant Grove Creek Watershed
106635 Pleasant Grove Creek Watershed

106636 Pleasant Grove Creek
104007 Canal
104009 Cross Canal Watershed
104894 Yankee Slough Watershed
104895 Yankee Slough Watershed
107264 Pleasant Grove Creek Watershed
110499 Pleasant Grove Creek Watershed
210981 Pleasant Grove Creek Watershed
106987 Bear River
107014 Cross Canal Watershed
107018 Cross Canal Watershed
107242 Pleasant Grove Creek Watershed
107247 Pleasant Grove Creek Watershed
107260 Pleasant Grove Creek Watershed
107261 Pleasant Grove Creek Watershed
107262 Pleasant Grove Creek Watershed
107263 Pleasant Grove Creek Watershed
107265 Pleasant Grove Creek Watershed
107266 Pleasant Grove Creek Watershed
107267 Pleasant Grove Creek Watershed
107268 Pleasant Grove Creek Watershed
107269 Pleasant Grove Creek Watershed
107270 Pleasant Grove Creek
107271 Pleasant Grove Creek
107272 Pleasant Grove Creek
107273 Pleasant Grove Creek
107274 Pleasant Grove Creek
107275 Pleasant Grove Creek Watershed
107276 Pleasant Grove Creek
107277 Pleasant Grove Creek
107278 Pleasant Grove Creek
107279 Pleasant Grove Creek
110445 Canal







