

High Receiving Water Risk Watershed GIS Methodology

Objective:

To provide guidance for the designation of watersheds as “high risk” with regards to the two part Risk Level Determination in the Construction Storm Water General Permit. The guidance enables a discharger to identify the Receiving Water Risk for a construction project. Highlighted watersheds on the map are considered High Receiving Water Risk.

Background:

High Receiving Water Risk Watersheds are Hydrologic Unit Code (HUC) Level 12 watersheds that drain to waterbodies that are either 1) 303(d) listed as being impaired for sediment/siltation, 2) have a US Environmental Protection Agency-approved, sediment-related Total Maximum Daily Load (TMDL), or 3) have the existing beneficial uses of SPAWN, MIG, **and** COLD according to the most recent applicable Regional Board Basin Plan. A combination of HUC Level 10 watershed boundaries and physical barriers (e.g. dams) were used to delineate the upstream extent of High Receiving Water Risk Watersheds. A project located within a High Receiving Water Risk Watersheds is considered to have a high receiving water risk. Identifying High Receiving Water Risk Watersheds reduces the confusion over direct vs. indirect discharges and questions regarding upstream extent. For more information on the Construction General Permit please visit:

http://www.waterboards.ca.gov/water_issues/programs/stormwater/construction.shtml

Data and Method:

High Receiving Water Risk Watersheds were created using the California waterbodies and HUC Level 12 watersheds included in the National Hydrography Dataset, (NHD) (available at: <http://datagateway.nrcs.usda.gov/>) in conjunction with waterbodies identified in the 303(d) lists and in the Regional Water Board Basin Plans. Information from the 303(d) lists and Basin Plans were georeferenced to the NHD data to create the High Receiving Water Risk Watersheds.

High Receiving Water Risk Watersheds are updated with changes to the 303(d) sediment listings or the Regional Board Basin Plans. An interactive map showing the current 303(d) - listed waterbodies can be found at:

http://www.waterboards.ca.gov/water_issues/programs/tmdl/integrated2010.shtml?wbid=CAR4033100020050918175233

Regional Board Basin Plans can be found at:

http://www.waterboards.ca.gov/plans_policies/

Contact:

Please contact the Storm Water help desk with any questions or comments: Phone: 916-341-5537 or Email: stormwater@waterboards.ca.gov

Geographic Information System (GIS) Data can be accessed at:

<https://ftp.waterboards.ca.gov/WebInterface/login.html>

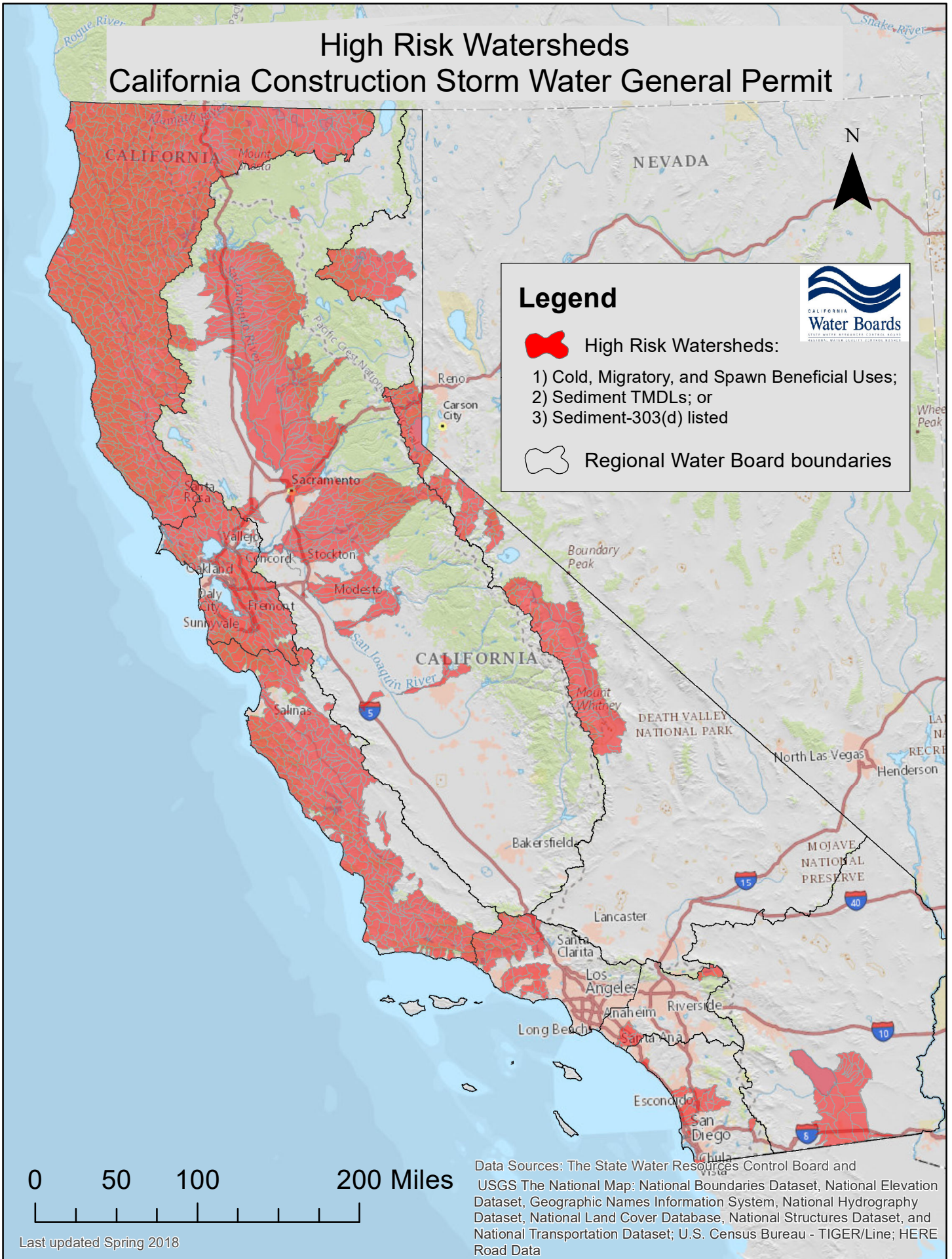
Use the following User ID and password to log on:

User ID: GIS_Shared

Password: GIS_Download

Once logged in: Click on folders: 'swrcb'>'dwq'>'cgp'>'risk'

High Risk Watersheds California Construction Storm Water General Permit



Last updated Spring 2018