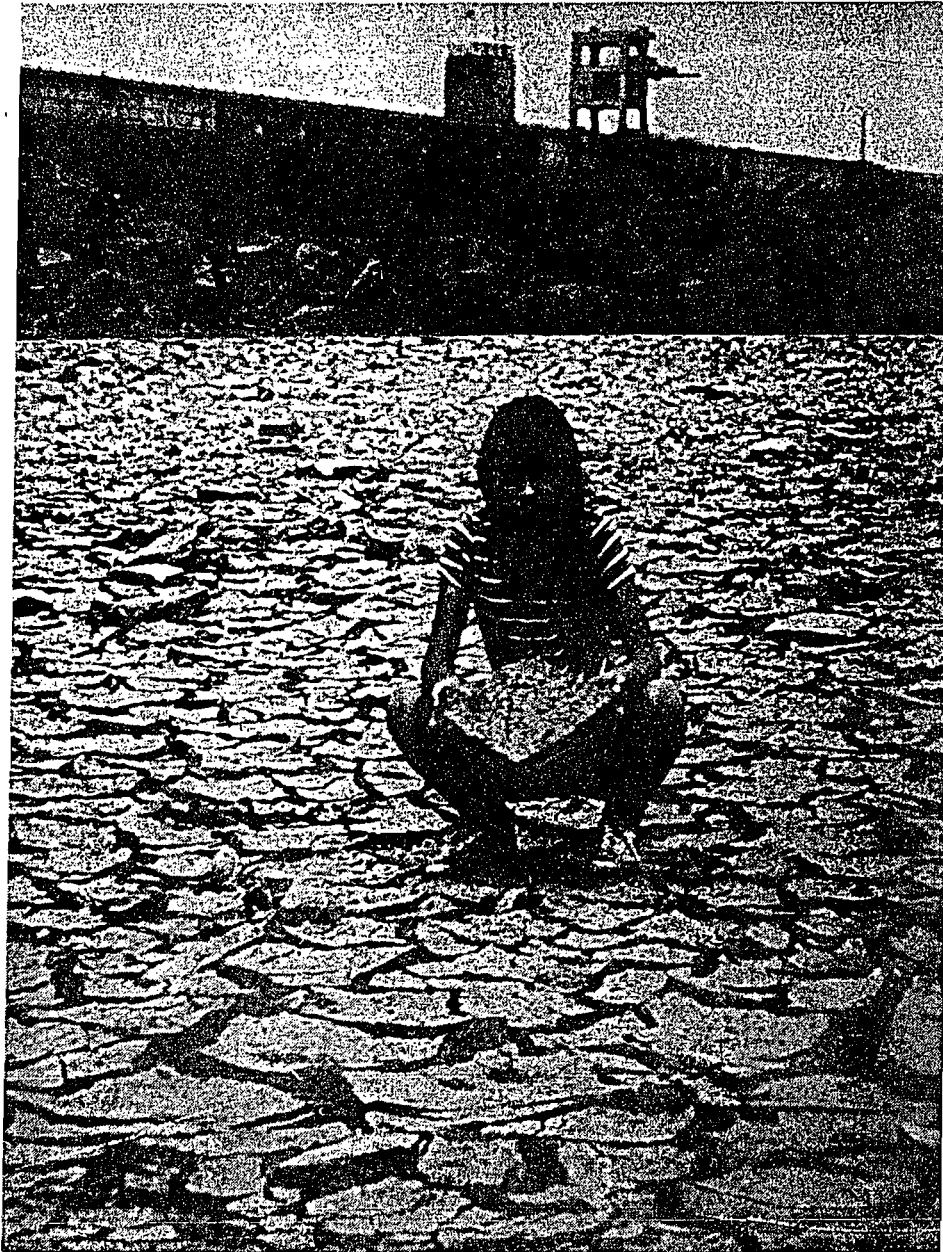


CALIFORNIA

78  
FIVE COPY  
SURVEILLANCE & MONITORING SECTION

# WATER QUALITY INVENTORY

*WATER YEAR 1976 and 1977*



*APRIL 1978*

SURVEILLANCE & MONITORING SECTION

*State Water Resources Control Board*

WATER QUALITY LIMITED SEGMENT  
- MATRIX - W.Y. 1976 & 1977

SEGMENT NAME AND DESCRIPTION	EDITION		BENEFICIAL USE AFFECTED (1)	WATER QUALITY OBJECTIVE VIOLATED	STATUS (2)			COMMENTS
	REVISION	PRIORITY			NONPOINT SOURCE	POLYNT SOURCE	COMMENTS	
Laguna de Santa Rosa	1	1	B,C,J,P,Q,R	D.O., Nutrient, Coliform	C	X	X	Control by 1978
South San Francisco Bay	2	1	L,M,Q	D.O., Coliform, Ammonia	C	X	X	
Alameda Creek	2	2	A,T	TDS	C		X	
Napa River	2	3	I,M,N,Q	Coliform, pH, Nutrient, D.O.	C	X	X	
Petaluma River	2	4	I,M,N,Q	D.O., Coliform	C	X	X	
Bryant Creek	6	1	B,J,P,Q,R,T	Toxic, TDS, pH, Heavy Metals	C	X	X	Acid Mine drainage
East Walker River	6	2	J,P,Q,R	Turb., Sus. Solids, Set. Sol.	C		X	Outflow from Bridgeport Reservoir
New River	7	1	B,H,I,P,R	D.O., Bacteria	C		X	International problem
Salton Sea	7	2	P,Q,R,S	TDS	C	X	X	
Palo Verde Lagoon	7	3	I,P,Q,R	Bacteria	N	X	X	
Middle Santa Ann River	8	1	I,Q,T	Bacteria, TDS, Cl	C	X	X	
Upper Newport Bay	8	2	E,G,Q	Bacteria	C	X		
Ysidora-Deluz HSU	9	1	A,Q	TDS, Nutrient, Bacteria	C		X	Includes Santa Margarita
Tijuana HSU	9	2	R	Bact., BOD, Set. Solids	C		X	International problem
San Joaquin River (Lower)	5	1	B,H,I,J,M,N	Dissolved Oxygen, Sal.	C	X	X	
Little Grizzly Creek	5	3	H,J	Toxic, Heavy Metals	C		X	Mine drainage
Spring Creek	5	2	I,J,M,N,P,Q,R	Toxic, Heavy Metals, pH	C		X	Mine drainage
Mokelumne River	5	4	H,I,J,M,N	Toxic, Heavy Metals	C		X	Mine drainage

STANDARD BENEFICIAL USES (1)																				
NEW	AGR	IND	PEOC	CCM	PCFR	SHELLFISH	FRESH FISH	WATER	COLL	BIOE	WAR	SPEC	MGR	REBE	WILD	REC 1	REC 2	SAL	GR	MAY
A	B	C	D	E	F	G	H	I	J	K	L	M	N	O	P	Q	R	S	T	U

STATUS (2)  
N-"NEW" - A problem segment not previously included  
C-"CON'T." - A continuing problem

# EFFLUENT LIMITED SEGMENT

(EL - 1 - A) - W.Y. 1976 & 1977

SEGMENT NAME AND DESCRIPTION	REGION	REGIONAL INCIDENCY	BENEFICIAL USES IMPOSED (2)	WATER QUALITY OBJECTIVE VIOLATED	NONPOINT SOURCE POINT SOURCE		COMMENTS
Richardson Bay	2	1	G,Q	Coliform	X	X	Insufficient data
Suisun Marsh	2	2	I,L,N,P	S.O., Salinity, Biostimulants	X	X	Insufficient data
Sonoma Creek	2	3	I,M,N,O	D.O., Coliform	X	X	Insufficient data
Tomas Bay-Walker & Lagunitas Ck	2	4	G	Coliform	X		Insufficient data
Lower Salinas River	3	1	I,P,R	Ammonia, D.O., Coli., P, Toxi., Mercuri., TDS		X	Within COS area Insufficient data
San Lorenzo River	3	2	A,B,C,H,J,N,M, P,Q,R,T	Nutrients, Sediment, Suspended Solids, Coli.	X		Within a COS Area
Roberts Lake/Laguna Grande	3	1	I, Q	Nutrients, Sediment	X		Urban Storm Runoff, Const. Sed.
Pajaro River (Lower)	3	3	A,B,O,T	TDS, Sodium, Pesticides, Nutr.	X		Within a COS Area
Carmel River	3	5	A,C,R	TDS, Bacteria	X		Insufficient data
San Luis Obispo Creek	3	4	B,I,M,H,Q,R	D.O., pH, Nutrients, Bacteria	X	X	Insufficient data
San Joaquin River (Middle)	5	1	A,B,C,I,J,K,N, Q,R	Salinity, Nutrients	X		
Sacramento River (Middle)	5	2	H,I,J,M,N	Toxicants, Copper, Temperature Copper	X	X	Kine drainage & other unidentified sources
Sacramento-San Joaquin Delta	5	3	B,C,D,H,I,N,Q,R	D.O., Sal., Bact., Nutr., Temp.	X	X	Suspended W.O.L.
Clear Lake	5	4	H,Q, R	Nutrients, Turb., Floatables	X		Causing other problem
Susan River	6	3	A,I,J,Q,R	Sus. Sed., Nutr., Coli., Temp.	X	X	Insufficient data
Deep Creek	6	2	J,Q,R	Sus. Sed., Coli., Nutrients	X		Insufficient data
E. Fork of W. Fork Mojave River	6	3	J,C,R	Sus. Sed., Coliform, Nutrients	X		Insufficient data
Mammoth Creek	6	4	A,J,Q,R	Coliform, Nutrients	X		Insufficient data
Little Truckee River	6	5	A,J,Q,R	Nutrients	X		Insufficient data
Big Bear Valley-Baldwin Lake	8	1	Q	Bacteria, Turbidity, Nitro		X	Insufficient data
Santa Ana River (Upper)	8	4	A	Bacteria	X		Insufficient data
Lake Elsinore	8	5	I,Q	D.O., Nutrient	X	X	Insufficient data

STANDARD BENEFICIAL USES (1)																									
FCN	AGR	IND	PROC	COMM	POWER	SHELLFISH	FRESH FISH	WASH	COLD	LIOL	WAP	SFTH	RECR	PAP	WLD	REC 1	REC 2	SAL	GR	NAV					
A	B	C	D	E	F	G	H	I	J	K	L	M	N	O	P	Q	R	S	T	U					

(CONT.)  
EFFLUENT LIMITED SEGMENT

(EL - 1 - B & C) - W.Y. 1976 & 1977

SEGMENT NAME AND DESCRIPTION		REGION	REGIONAL PRIORITY	BENEFICIAL USE AFFECTED (1)	WATER QUALITY OBJECTIVE VIOLATED	NONPOINT SOURCE	POINT SOURCE	COMMENTS
EL-1-B								
Bolinas Lagoon	2	1	G,Q	Coliform	X	X		Recom. Monitoring Prog.
Monterey Bay (So. Port.)	3	1	G,Q,R	Bacteria, Pesticides	X	X		
San Luis Obispo Creek SA	3	2	L,I,J,M,N,Q,R	Coliform, Nutrients	X	X		
Santa Maria River (Lower)	3	3	A,B,C,I,E,Q,R	Bact., Susp. Solids, Pest., Nutr.	X	X		
Coastal Segment (Aptos-Sequoia)	3						X	
Bolsa Nueva Hydrologic Unit	3	1	G,C,P,Q,R	Pesticides, Turbidity, Suspended Solids, Nutrients, Bacteria	X	X		Within a 208 Area
Tuolumne River (Lower)	5	1	A,N,T	TDS				Regional Board working
American River (Lower)	5	2	A,Q	None listed		X		
Jackson Creek (Upper)	5	3	A,H,I,Q	Bacteria, D.O., Nutrients		X		
Woods Creek	5	4	H,I,Q	D.O., Nutrients, Bacteria		X		
Lower Truckee River	6	1	A,J,Q,R	Nutrients, TTS		X		Tertiary treatment by 1980
Rush Creek	6	2	A,I,Q,R	Bacteria, Nutrients	X	X		Collection system to be installed
Lytle Creek	8	-	A	Bacteria	X			Project Proposed
Mill Creek	8	-	A	Bacteria	X			Project Proposed
EL-1-C								
Upper Truckee River	6	1	J,R	Erosion & Stormwater runoff	X			208 Area
Trout Creek	6	2	J,R	Erosion & Stormwater runoff	X			208 Area
Colorado River	7	4	A,E,G,F,H,I,J,O,P,Q,R,T	Salinity				Over Use

STANDARD BENEFICIAL USES (1)	
CON	SHELLFISH
AGR	FRESH FISH
IND	WATER
PROC	COOLD
COMM	BIOL
POWER	MAR
	SPEC
	MGR
	BAE
	WILD
	REC 1
	REC 2
	SAL
	GR
	NAV
A	B
C	D
E	F
G	H
I	J
K	L
M	N
O	P
Q	R
S	T
U	