

Attachment 2
ENVIRONMENTAL SETTING 8/6/07



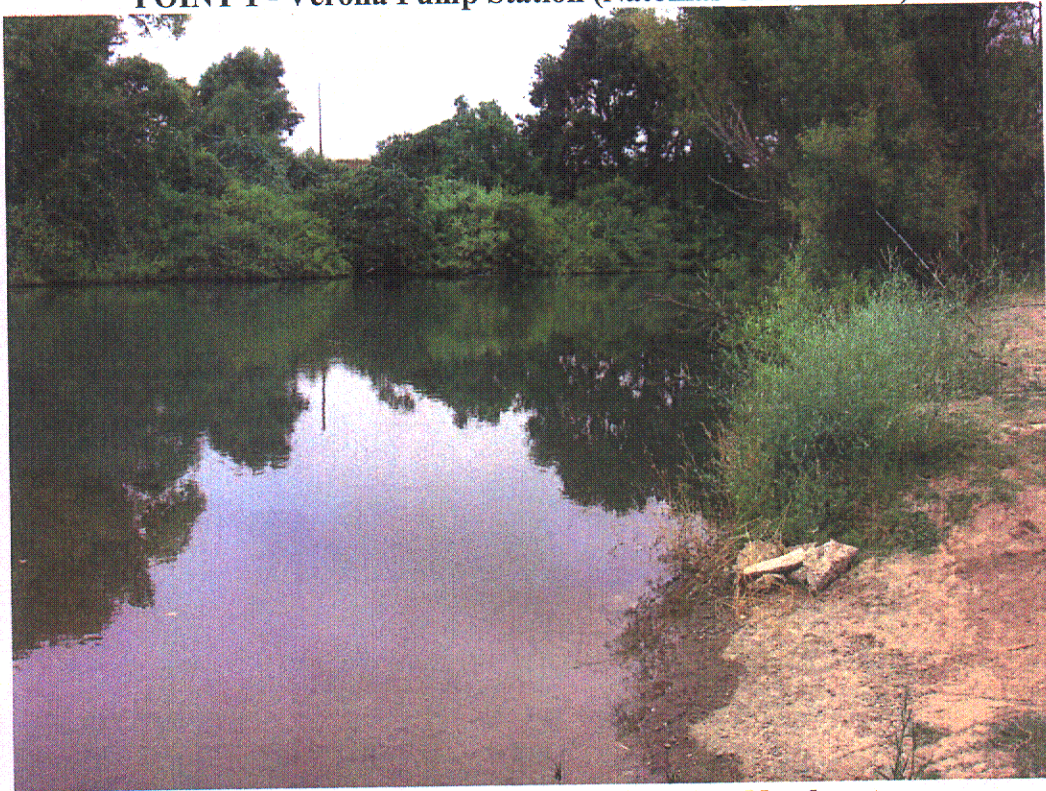
LNWI Intake (East Drainage Canal) – View East



LNWI Intake– View West



POINT 1 - Verona Pump Station (Natomas Cross Canal)



POINT 1 - Verona Pump Station – View Northeast



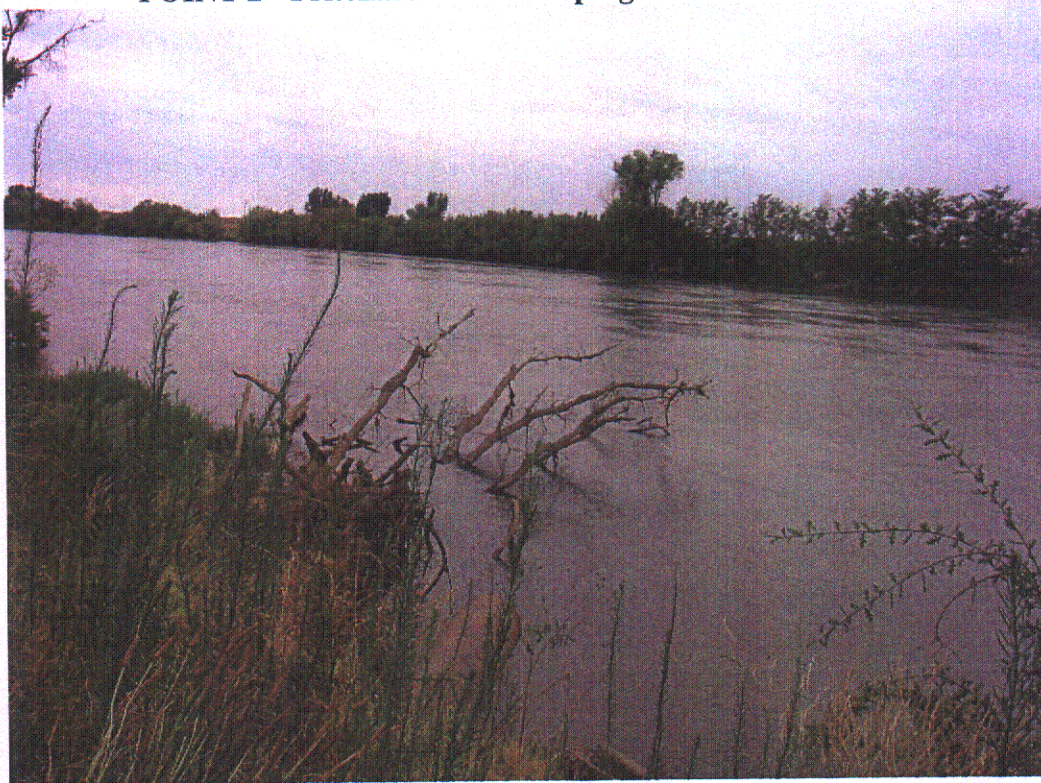
POINT 1 - Verona Pump Station – View Southwest



POINT 2 - Pritchard Lake Pumping Plant (Sacramento River)



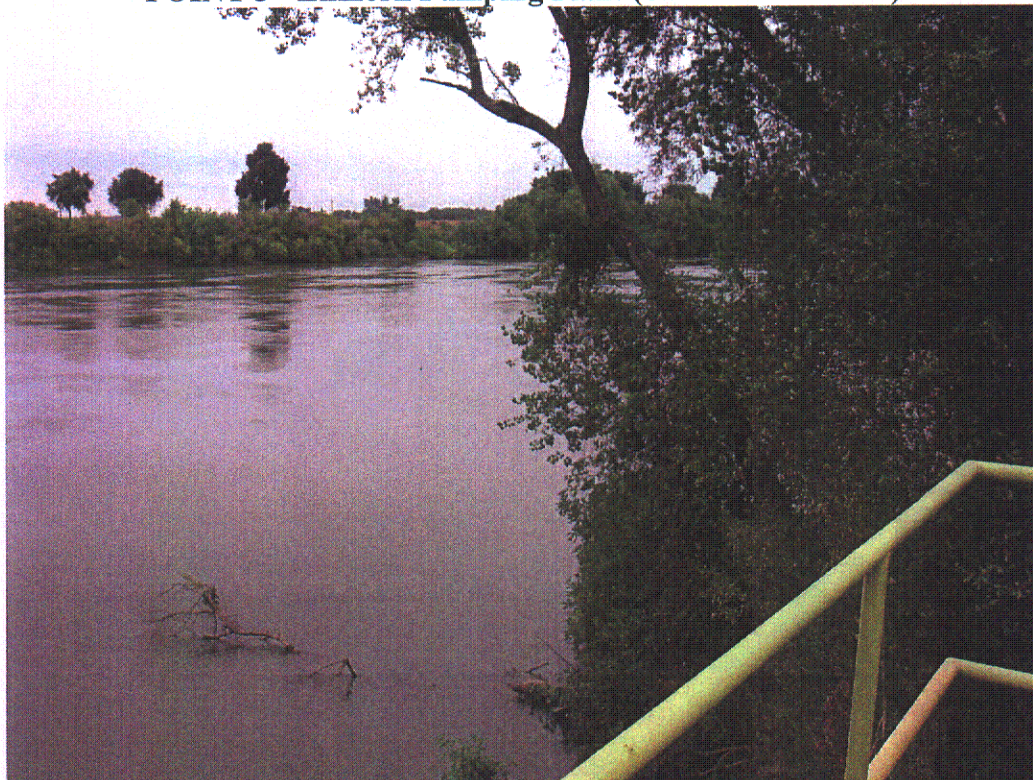
POINT 2 - Pritchard Lake Pumping Plant – View North



POINT 2 - Pritchard Lake Pumping Plant – View South



POINT 3 - Elkhorn Pumping Plant (Sacramento River)



POINT 3 - Elkhorn Pumping Plant – View North



POINT 3 - Elkhorn Pumping Plant – View South



POINT 6 - Riverside Pumping Plant (Sacramento River)



POINT 6 - Riverside Pumping Plant – View North



POINT 6 - Riverside Pumping Plant – View South



POINT A - Bennett Pumping Plant (Natomas Cross Canal)



POINT A - Bennett Pumping Plant – View Northeast



POINT A - Bennett Pumping Plant - Southwest



POINT B - Northern Pumping Plant (Natomas Cross Canal)



POINT B - Northern Pumping Plant – View Northeast



POINT B - Northern Pumping Plant – View Southwest



POINT E to POINT 2 - Pullman Lift Station (Confluence of North and Central Main Canals)



POINT E to POINT 2 - Pullman Lift Station – View Northeast



POINT E to POINT 2 - Pullman Lift Station – View Southwest



POINT E to POINT F - County Line Lift Station (East Drainage Canal)



POINT E to POINT F - County Line Lift Station – View South



POINT E to POINT F - County Line Lift Station – View North



POINT E to POINT F - County Line Lift Station – View East



POINT E to POINT F - County Line Lift Station – View West



POINT E to POINT F - Elkhorn Lift Station (East Drainage Canal)



POINT E to POINT F - Elkhorn Lift Station – View North



POINT E to POINT F - Elkhorn Lift Station – View South



POINT F to POINT G - Airport North Drain Pump (Off West Drainage Canal) – View South



POINT F to POINT G - Airport North Drain Pump – View North



POINT F to POINT G - Airport/Bayou Lift Station (Off West Drainage Canal) – View South



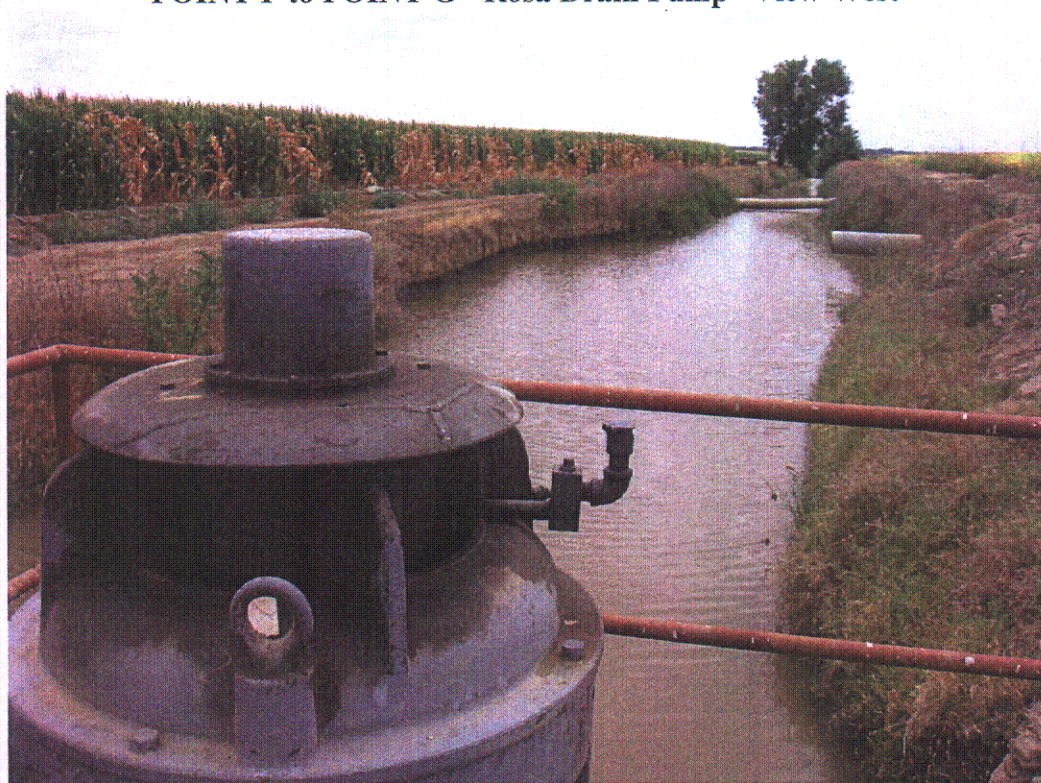
POINT F to POINT G - Airport/Bayou Lift Station – View North



POINT F to POINT G - Rosa Drain Pump (West Drainage Canal) – View East



POINT F to POINT G - Rosa Drain Pump— View West



POINT F to POINT G - San Juan 30 Horse (Off West Drainage Canal) – View South



POINT F to POINT G - San Juan 30 Horse – View North



POINT F to POINT G - Plant 3 Pump (Off West Pumping Plant) – View East