

# Section 13 Water Rights Application #31021 (Champlin Creek)

**Martinelli Ranch**  
**1150 Stage Gulch Road**  
**Petaluma CA 94952**

Property limits and selected drainage, infrastructure, proposed vineyard details, and basis of bearing determined using corrected submeter GPS data with California Zone 2 NAD27 coordinates. Quad map scanned, scaled, rotated for visual best fit on 8000' baseline to GPS data, with minor distortions observed. Section lines projected from known corners using a standard 1-mile grid unadjusted for curvature or local distortion. Field verify critical locations and areas using supplemental survey as required.

Refer to Biological Report and other special studies for site-specific details and limits of Wetlands and any other delineated resource areas.

Point of Diversion  
 Champlin Creek Watershed  
 1852930E, 207140N  
 Reservoir #7, located 2945'N  
 1293'E of projected North East  
 corner of S4 T4N R6W MDM at  
 1851637E, 204195N

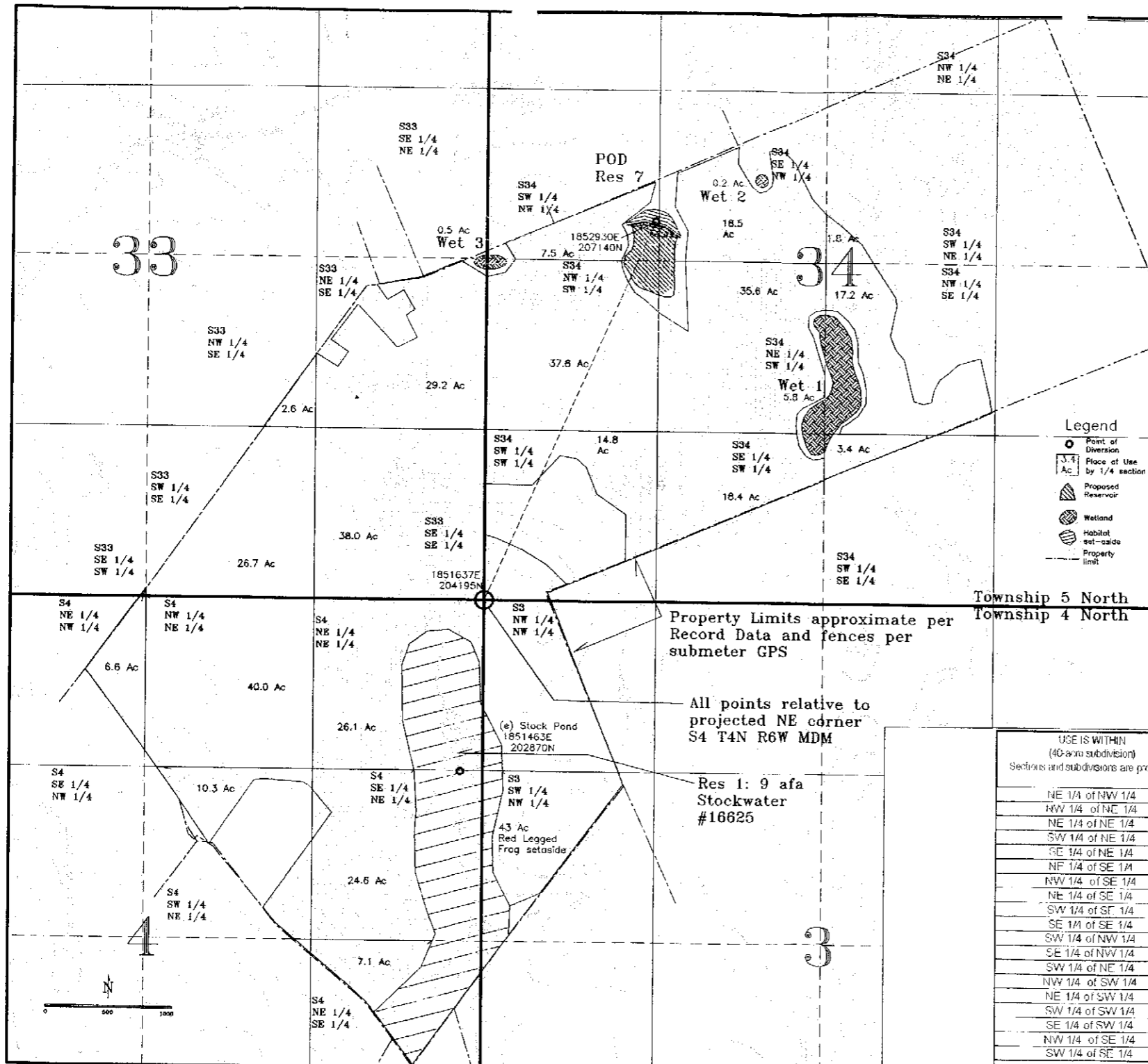
Corrected sub-meter  
 GPS coordinates per  
 NAD27, California  
 Zone 2

**APN 068-050-020**

USGS 7.5-min quadrangle map  
 Petaluma River © 1" = 800'  
 40' Contours

March 30, 2007

**Erickson Engineering Inc.**  
**Valley Ford CA 94972-0446**  
**707/795-2498 Voice, Fax**



**Legend**

- Point of Diversion
- Place of Use by 1/4 section
- ▨ Proposed Reservoir
- ▩ Wetland
- ▧ Habitat set-aside
- - - Property limit

Property Limits approximate per Record Data and fences per submeter GPS

All points relative to projected NE corner S4 T4N R6W MDM

Res 1: 9 afa Stockwater #16625

USE IS WITHIN (40-acre subdivision) Sections and subdivisions are projected	SECTION	TOWNSHIP	RANGE	BASE & MERIDIAN	IF IRRIGATED	
					Number of acres	Presently cultivated (Y/N)
NE 1/4 of NW 1/4	4	4N	6W	MDM	6.6	N
NW 1/4 of NE 1/4	4	4N	6W	MDM	40.0	Y
NE 1/4 of NE 1/4	4	4N	6W	MDM	26.1	Y
SW 1/4 of NE 1/4	4	4N	6W	MDM	10.3	Y
SE 1/4 of NE 1/4	4	4N	6W	MDM	24.6	Y
NW 1/4 of SE 1/4	33	5N	6W	MDM	2.6	N
NE 1/4 of SE 1/4	33	5N	6W	MDM	29.2	N
SW 1/4 of SE 1/4	33	5N	6W	MDM	26.7	N
SE 1/4 of SE 1/4	33	5N	6W	MDM	38.0	Y
SW 1/4 of NW 1/4	34	5N	6W	MDM	7.5	N
SE 1/4 of NW 1/4	34	5N	6W	MDM	18.5	N
SW 1/4 of NE 1/4	34	5N	6W	MDM	1.8	N
NW 1/4 of SW 1/4	34	5N	6W	MDM	37.8	N
NE 1/4 of SW 1/4	34	5N	6W	MDM	35.6	N
SW 1/4 of SW 1/4	34	5N	6W	MDM	14.8	N
SE 1/4 of SW 1/4	34	5N	6W	MDM	18.4	N
NW 1/4 of SE 1/4	34	5N	6W	MDM	17.2	N
SW 1/4 of SE 1/4	34	5N	6W	MDM	3.4	N
					366.2	Acres