

PETITION FOR CHANGE OF PLACE OF USE  
APPLICATION NO. 010456, PERMIT NO. 6466, LICENSE NO. 10911

MAPS

1. Map depicting both the current place of use and the proposed additional place of use labeled as "Out of Town Service Area."
2. Map depicting the Out of Town Service Area in detail, prepared in January 2004.

- Y
- .....J,K-5
  - .....J-2
  - (N).....H-4
  - .....U-8
  - .....K-4,5
  - .....H-4
  - .....H,J-3
  - .....H-3
  - .....K-5
  - .....A,B-1;T-17,18
  - .....T-16,17
  - Rd.....A-1;T,U,V-17

- Z
- .....J-5
  - .....U,V-11
  - .....T,U-11
  - .....U-11

- .....T-13
- .....U-9
- .....B-T;T-18
- .....T-1
- .....K-5

- entary School (N).....K-6
- entary School (N).....H-4
- entary School (N).....K-2
- ry School (C).....T-2
- h School (C).....T-2
- ry School.....P-3
- entary School

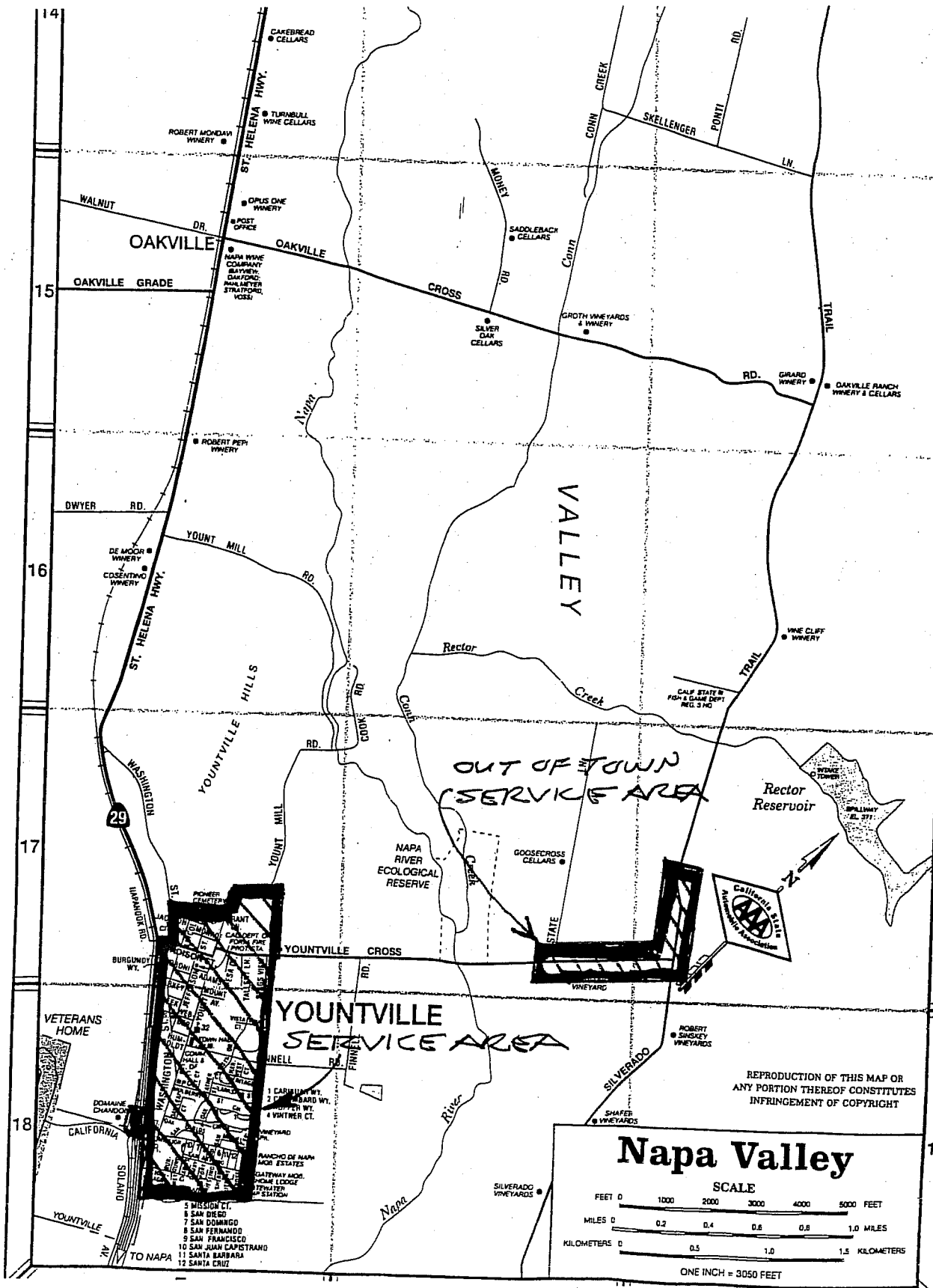
- .....E-9
- ry School (N).....G-4
- ool (SH).....U-10
- ary School (N).....J-5
- ary School.....L-8
- (N).....L-4
- (V).....K-5
- entary School

- .....D-9
- ary School (N).....H-3
- ool (C).....T-2
- chool (N).....M-7
- entary School (N).....J-3
- chool (N).....H-3
- ry School (SH).....U-9
- chool (SH).....U-10
- chool (N).....G-3
- chool (N).....L-5
- chool.....L-7
- chool (N).....M-4

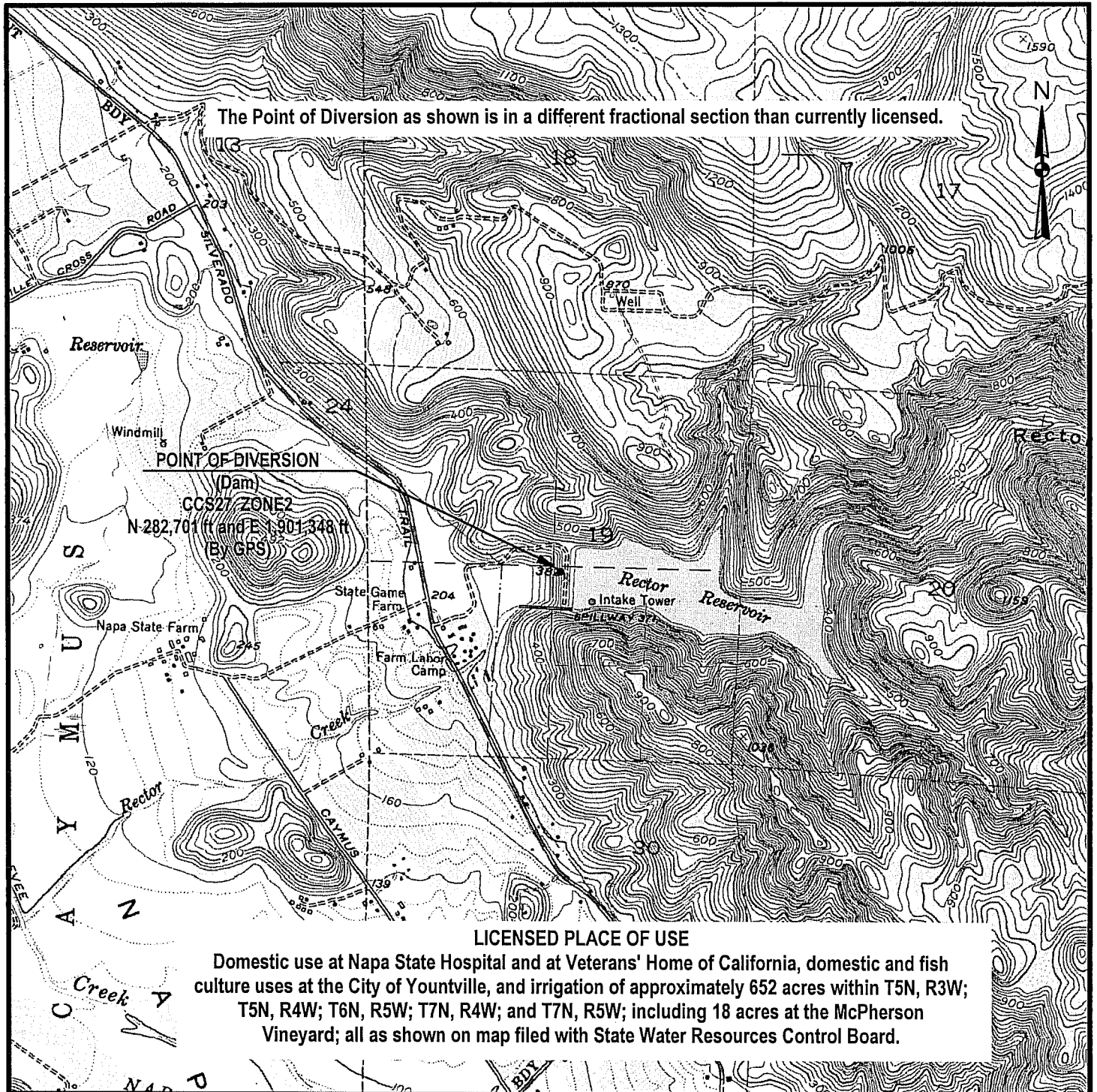
- ouis
- ool (SH).....U-9
- ool (N).....L-4
- ool.....G-7
- (N).....G-4
- ry School (N).....K-3
- ry School (N).....L-4
- chool (Y).....T-18
- County (N).....L-5

- .....L-4
- ets.....U-7
- on (N).....L-5
- (Y).....T-18
- .....P-6

- .....B-1;T-18
- ant (SH).....U,V-11



WATER SERVICE AREA  
TOWN OF YOUNTVILLE



OWNER CALIFORNIA DEPARTMENT OF VETERANS AFFAIRS

SOURCE RECTOR CREEK

POINT OF DIVERSION

WITHIN NW 1/4 OF SE 1/4 OF SECTION 19, T7N, R4W, MDB&M

COUNTY OF NAPA

STATE OF CALIFORNIA  
 CALIFORNIA ENVIRONMENTAL PROTECTION AGENCY  
**STATE WATER RESOURCES CONTROL BOARD**  
 DIVISION OF WATER RIGHTS

APPLICATION NO. 10456

LICENSE NO. 10911

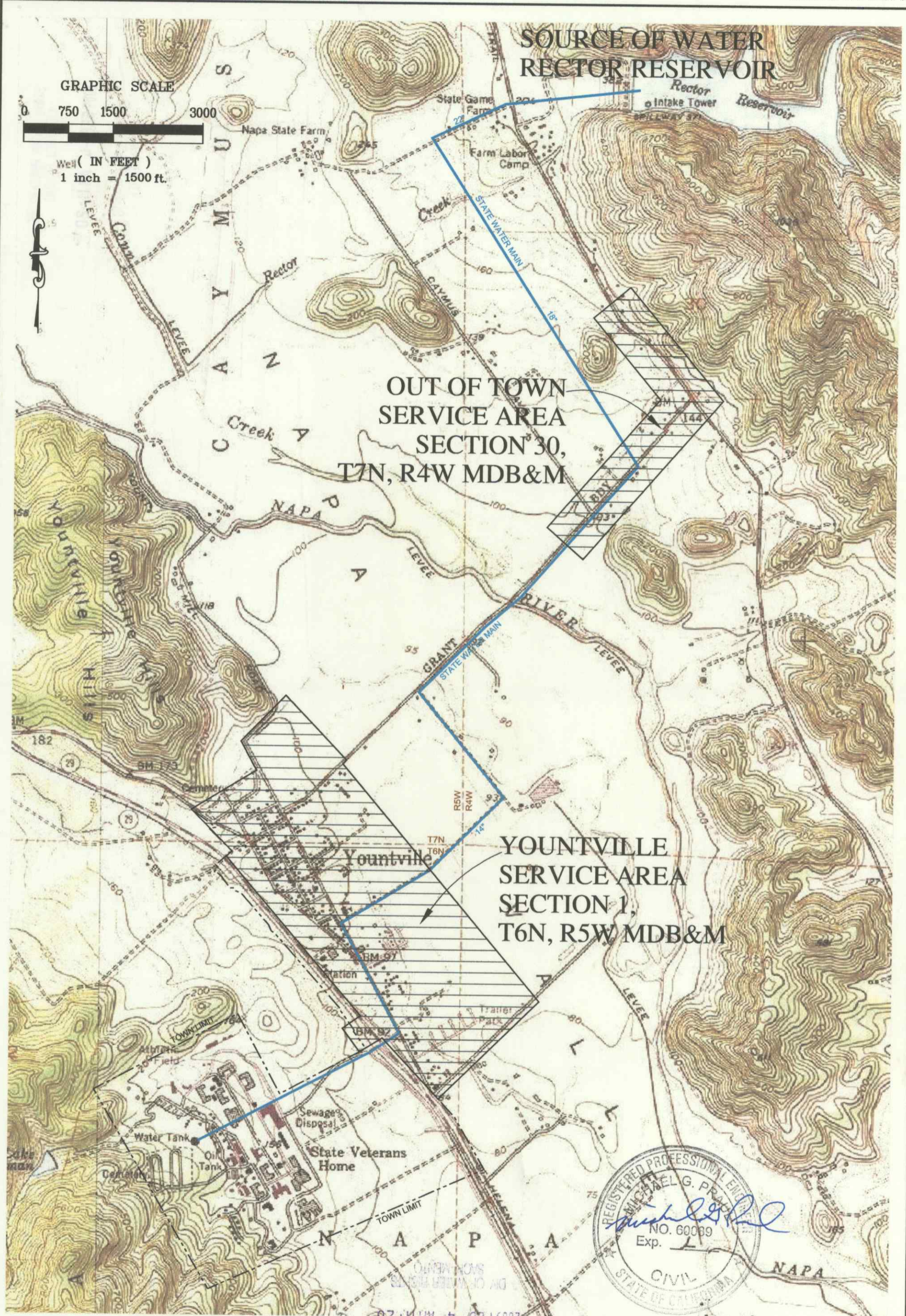
**COMPLIANCE**

U.S.G.S. QUAD: YOUNTVILLE DATE: 1968 SCALE: 1:24,000

Date	DRAWN:	CHECKED:
5/8/02	L. LINDSAY	ALJ

Note: This map does not constitute a public land survey as defined by California Business and Professions Code section 8726. It was prepared for informational purposes only.





SOURCE OF WATER  
RECTOR RESERVOIR



Well ( IN FEET )  
1 inch = 1500 ft.

OUT OF TOWN  
SERVICE AREA  
SECTION 30,  
T7N, R4W MDB&M

YOUNTVILLE  
SERVICE AREA  
SECTION 1,  
T6N, R5W MDB&M



2009 FEB - 4 AM 11:20



**Coastland Civil Engineering, Inc.**  
 1400 Neotomas Avenue, Santa Rosa, CA 95405  
 707.571.8005 707.571.8037 Fax

STATE WATER RIGHTS  
 CONTROL BOARD

**YOUNTVILLE  
 WATER SERVICE AREA  
 TOWN OF YOUNTVILLE JULY 2002**