

- Legend**
- Existing Place of Use
 - Proposed Place of Use
 - - - Existing Pipeline or Canal
 - Proposed Pipeline or Canal
 - - - Lines of Equal Elevation of Groundwater, per San Joaquin County Flood Control and Water Conservation District Fall 1998 Groundwater Report
 - - - Estimated Predevelopment Groundwater Contours per USGS Professional Paper 1401-A, Figure 11
 - Point of Diversion
 - Existing Recharge Site
 - Future Potential Recharge Site

Existing Points of Diversion

Map Point	Description	40-acre subdivision of public land survey or projection thereof	Section	Township	Range	B. & M.
1	Camanche Reservoir: South 41° 33' West, 1,824 feet from E1/4 corner of Section 6	SE 1/4 of SE 1/4	6	4N	9E	MD
2	Direct Diversion & Rediversion: North 2,600 feet and West 1,000 feet from SE corner of Section 26	NE 1/4 of SE 1/4	26	4N	7E	MD
3	Direct Diversion & Rediversion: South 75 feet and East 850 feet from W 1/4 corner of Section 35	NW 1/4 of SW 1/4	35	4N	7E	MD
4	Diversion and Rediversion: California Coordinate Zone 3, North 603,200 feet and East 1,793,790 feet	SE 1/4 of NW 1/4	33	4N	7E	MD

Proposed Points of Diversion

Map Point	Northing	Easting	1/4-1/4	Section	Township	Range	B. & M.
1	628,550	1,850,100	SE of SE	6	T4N	R9E	M.D.
2	608,300	1,807,050	NE of SE	26	T4N	R7E	M.D.
3	602,850	1,803,450	NW of SW	35	T4N	R7E	M.D.
4	603,200	1,793,790	SE of NW	33	T4N	R7E	M.D.
5	626,150	1,841,800	NE of NW	12	T4N	R8E	M.D.
6	624,550	1,839,800	SW of NW	12	T4N	R8E	M.D.
7	604,050	1,771,000	SW of NW	35	T4N	R6E	M.D.

I, NICHOLAS F. BONSIGNORE OF 444 NORTH THIRD STREET, SUITE 325, SACRAMENTO, CALIFORNIA, DO HEREBY CERTIFY THAT THIS MAP WAS PREPARED UNDER MY DIRECT SUPERVISION BASED ON U.S.G.S. 7.5 MINUTE QUADRANGLES FOR THE AREA, DEPARTMENT OF WATER RESOURCES BULLETIN 146, U.S.G.S. PROFESSIONAL PAPER 1401-A, SAN JOAQUIN COUNTY FLOOD CONTROL AND WATER CONSERVATION DISTRICT FALL 1998 GROUNDWATER REPORT, AND FROM INFORMATION PROVIDED BY THE STOCKTON EAST WATER DISTRICT, NORTH SAN JOAQUIN WATER CONSERVATION DISTRICT, AND THE CITY OF LODI, AND THAT IT CORRECTLY REPRESENTS THE PROJECT DESCRIBED IN THE ACCOMPANYING PETITION, AND SHOWS THE LOCATION OF STREAMS IN THE IMMEDIATE VICINITY, AND IS TRUE AND CORRECT TO THE BEST OF MY KNOWLEDGE AND BELIEF.

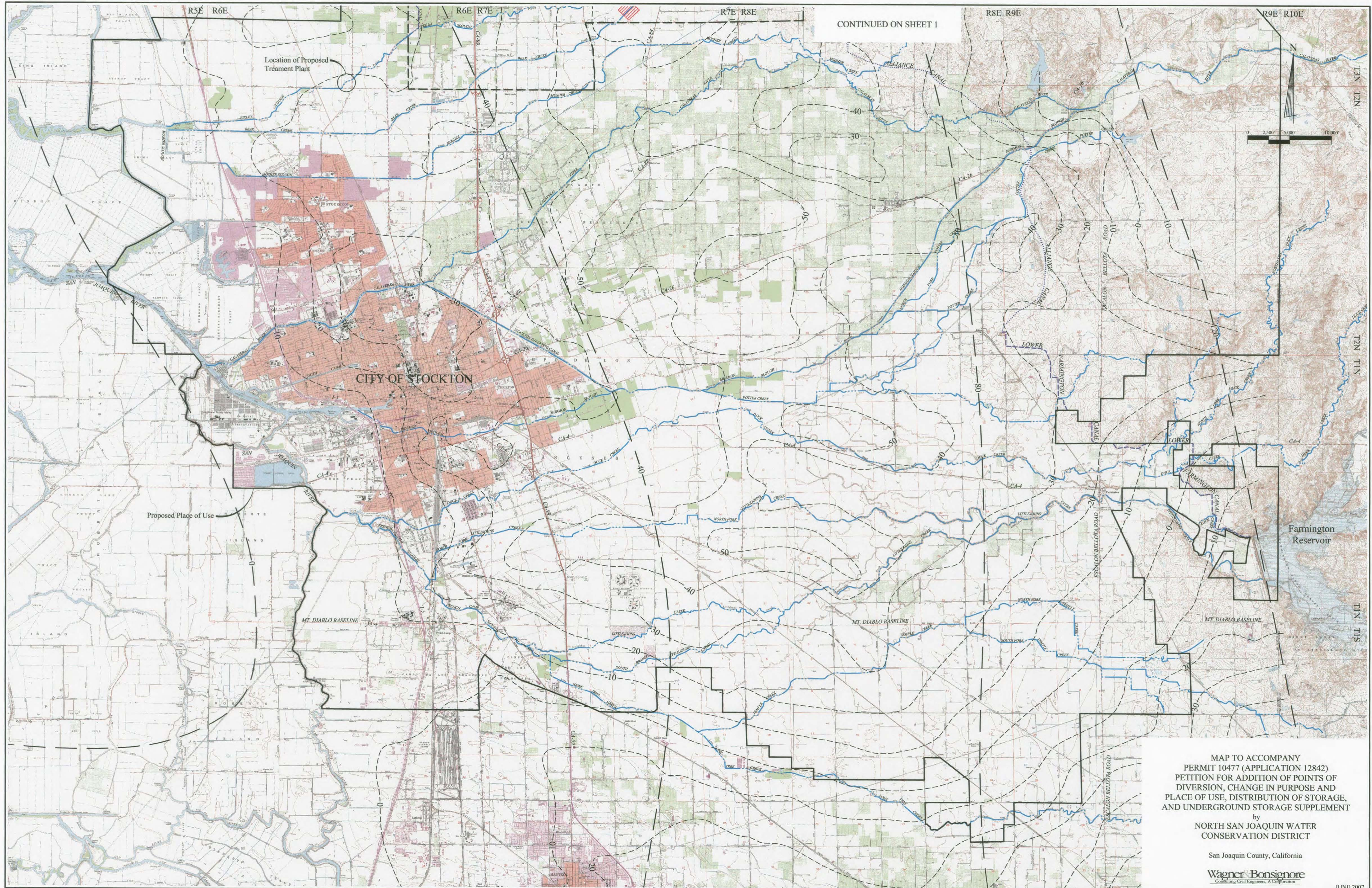
NICHOLAS F. BONSIGNORE DATE 6-1-07
 R.C.E. NO. 39422
 EXPIRES 12-31-07

MAP TO ACCOMPANY
 PERMIT 10477 (APPLICATION 12842)
 PETITION FOR ADDITION OF POINTS OF
 DIVERSION, CHANGE IN PURPOSE AND
 PLACE OF USE, DISTRIBUTION OF STORAGE,
 AND UNDERGROUND STORAGE SUPPLEMENT
 by
 NORTH SAN JOAQUIN WATER
 CONSERVATION DISTRICT

San Joaquin County, California

Wagner Bonsignore
 Consulting Civil Engineers, A Corporation

CONTINUED ON SHEET 2



CONTINUED ON SHEET 1

Location of Proposed Treatment Plant

Proposed Place of Use

CITY OF STOCKTON

Farmington Reservoir

MAP TO ACCOMPANY
 PERMIT 10477 (APPLICATION 12842)
 PETITION FOR ADDITION OF POINTS OF
 DIVERSION, CHANGE IN PURPOSE AND
 PLACE OF USE, DISTRIBUTION OF STORAGE,
 AND UNDERGROUND STORAGE SUPPLEMENT
 by
 NORTH SAN JOAQUIN WATER
 CONSERVATION DISTRICT

San Joaquin County, California

Wagner Bonsignore
 Consulting Civil Engineers, A Corporation