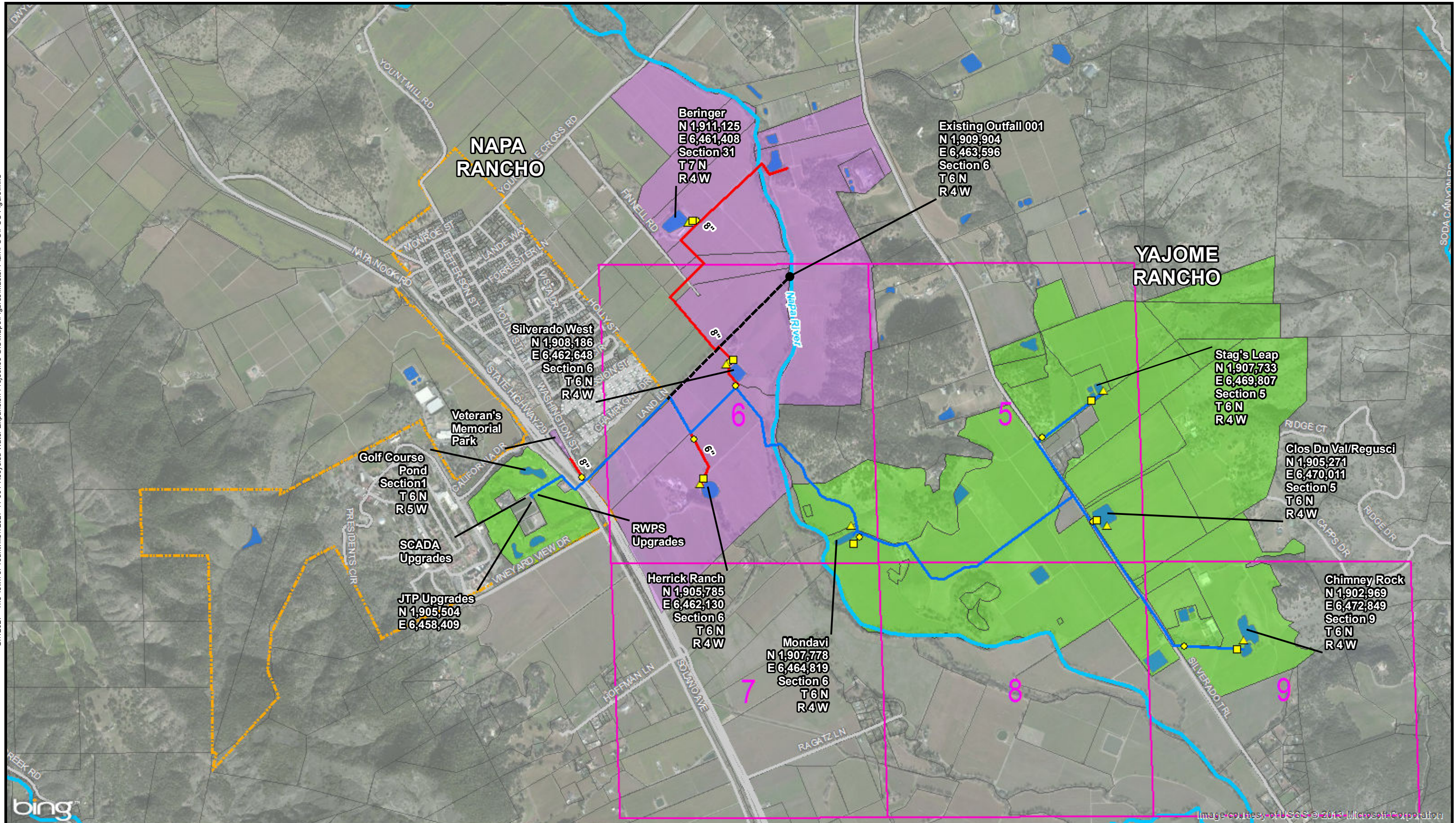


G:\12027 - The Town of Yountville\12027-11-001_Recycled Water Expansion Project\08-GIS\Maps\Figures\Master Plan\POC\POC Figure.mxd



	Town Limits		Tier 1 Service Area Existing Irrigated Area		Alternative 1a - 6 & 8-inch Pipe
	Parcel Boundary		Tier 2 Service Area Proposed Irrigated Area		Isolation Valves
	Ponds		Existing 6-inch Pipe		Pond Level Control/Telemetry
	Streams and Rivers				Motor-Operated Control Valves

0 1,150 2,300 ft

1 inch = 1,804 feet printed at 8.5x11

Sources: ESRI Basemap: Aerial; Napa County GIS: Parcels, City Limits, Roads; Winzler and Kelly GIS: Study Area, RW Pipes, Tiers.

www.ghd.com

Cartography AF

Date 3/13/2013

Project # 1202711001

Figure 5-1a
Petition of Change

Recycled Water Project

Town of Yountville