

Attachment 1

Potential Reclamation Sites

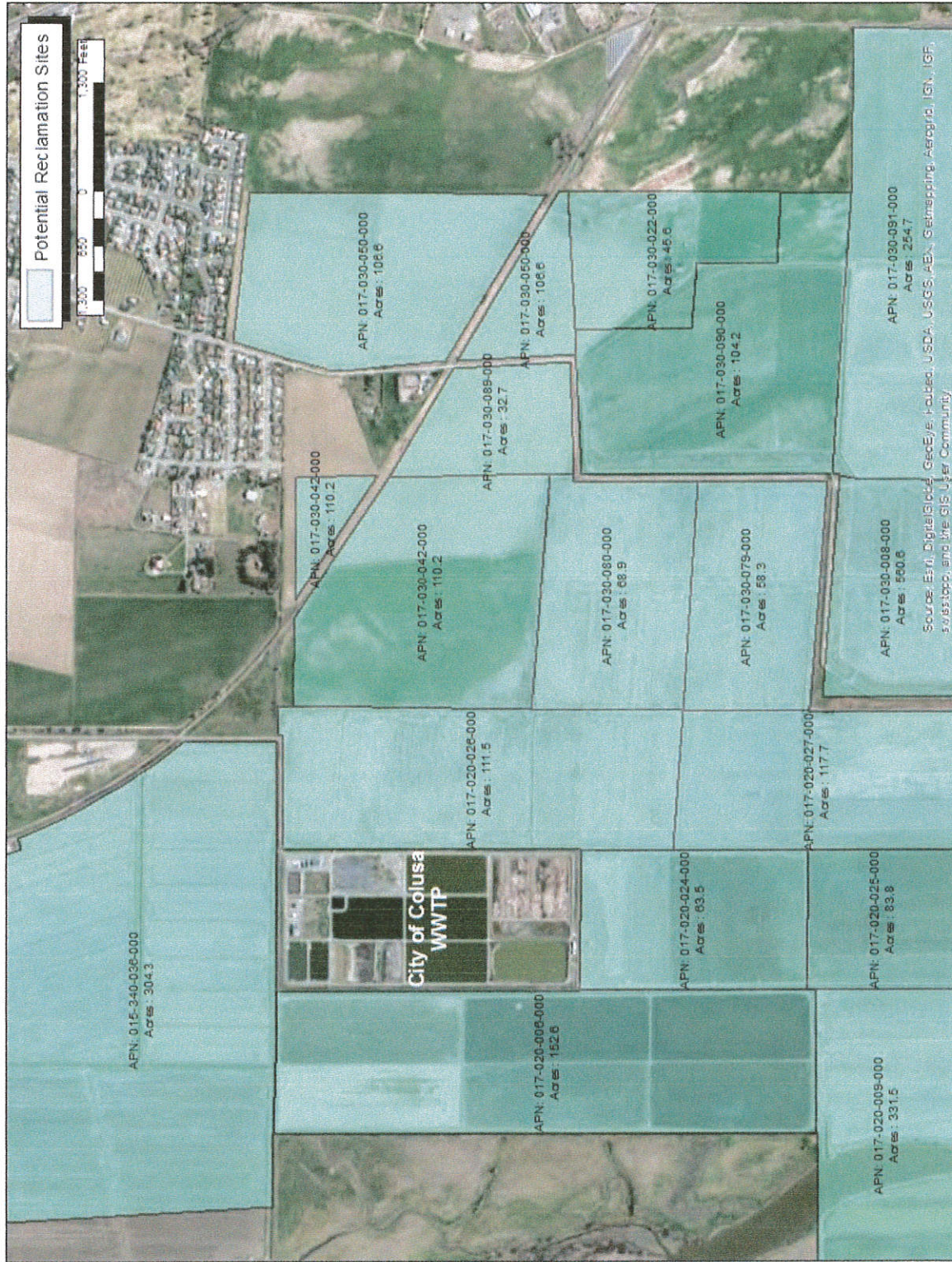


Figure 1
Potential Reclamation Sites

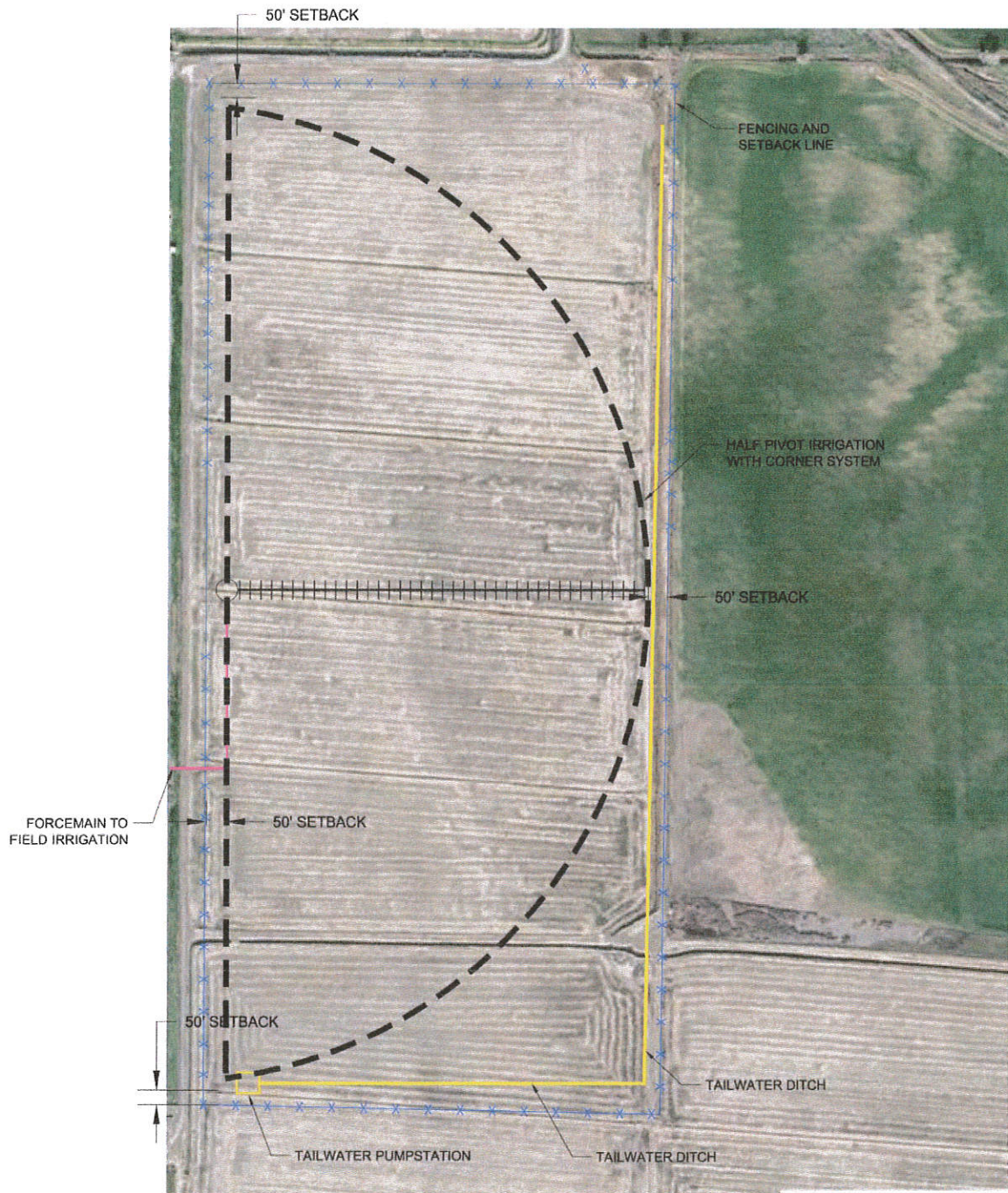


Figure 2
 Schematic Diagram of an 82 Acre Reclamation Site (Example)

Attachment 2

Estimated Diversions by Month

The following is an excerpt from a water balance showing estimated diversions to both the unnamed tributary to Powell Slough (labeled as Powell Slough) and to storage and irrigation by month. This water balance assumes an irrigation acreage of 82 acres (74 acres farmed) of alfalfa during an average water year.

| CALCULATIONS | OCT | NOV | DEC | JAN | FEB | MAR | APR | MAY | JUN | JUL | AUG | SEP | ANNUAL |
|---|------|------|------|------|------|------|------|------|------|------|------|------|--------|
| EFFLUENT TO POWELL SLOUGH (MG) | 4.5 | 12.5 | 12.7 | 6.9 | 0.0 | 0.0 | 0.5 | 6.0 | 2.2 | 6.0 | 0.0 | 0.0 | 38.4 |
| EFFLUENT TO STORAGE AND IRRIGATION (MG) | 12.7 | 12.3 | 12.7 | 12.7 | 11.5 | 13.7 | 12.3 | 12.7 | 12.3 | 12.7 | 12.7 | 12.3 | 148.7 |
| EFFLUENT TOTAL (MG) | 3.0 | 1.8 | 1.1 | 1.1 | 2.0 | 3.3 | 3.0 | 5.5 | 7.5 | 8.0 | 7.2 | 7.2 | 55.9 |
| EVAPORATION (IN) | 1.0 | 2.4 | 2.9 | 3.8 | 2.1 | 2.5 | 1.0 | 3.5 | 0.2 | 0.3 | 0.1 | 0.3 | 18.1 |

Attachment 3

***Location of Effluent Discharge and Figures of
Proposed Changes***

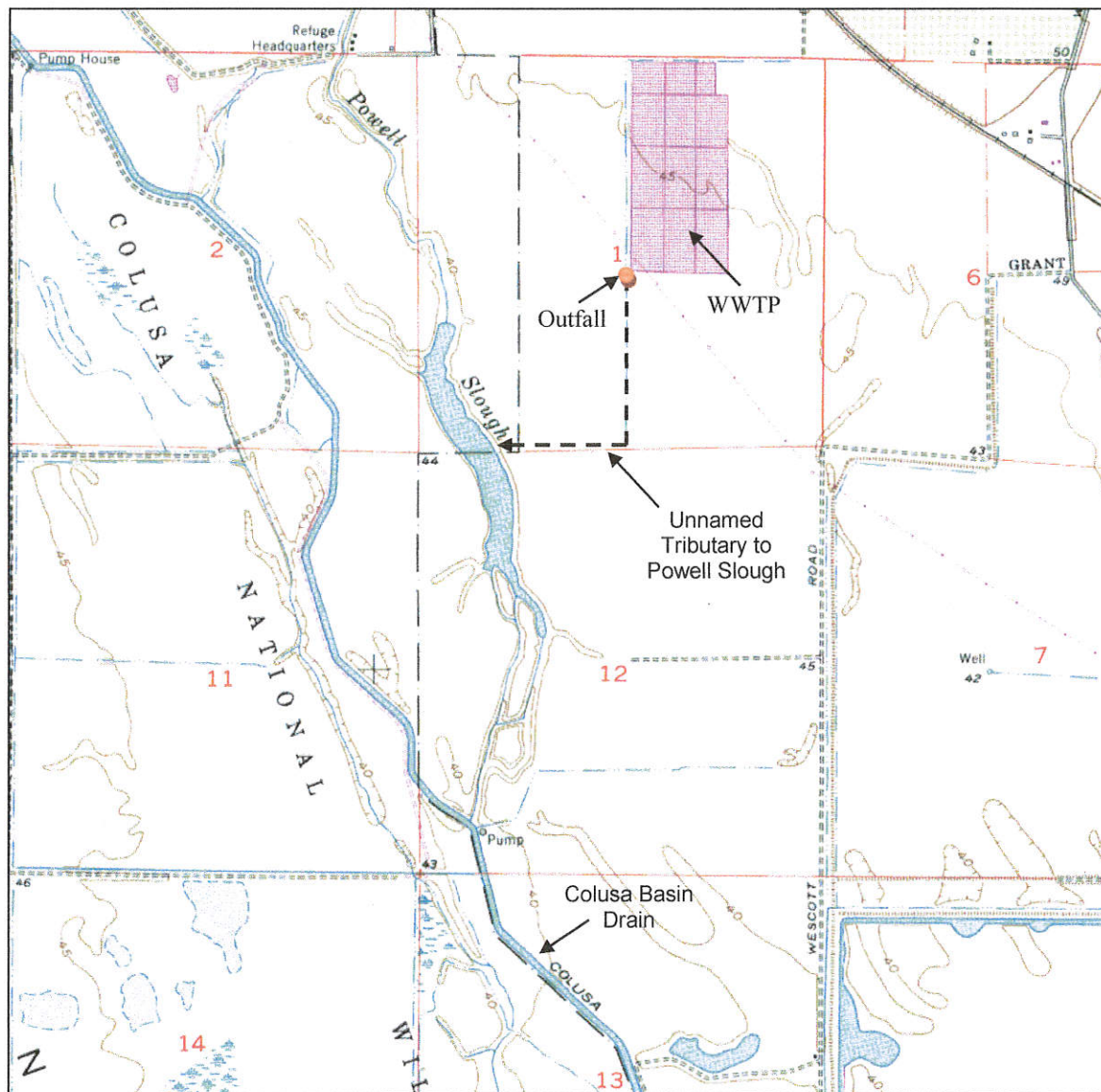


Figure 1
Location of Effluent Discharge for the City of Colusa WWTP
(Outfall Location: CA21 T15N R2W; Lat: 39° 10' 50" N, Long: 122° 01' 48" W)

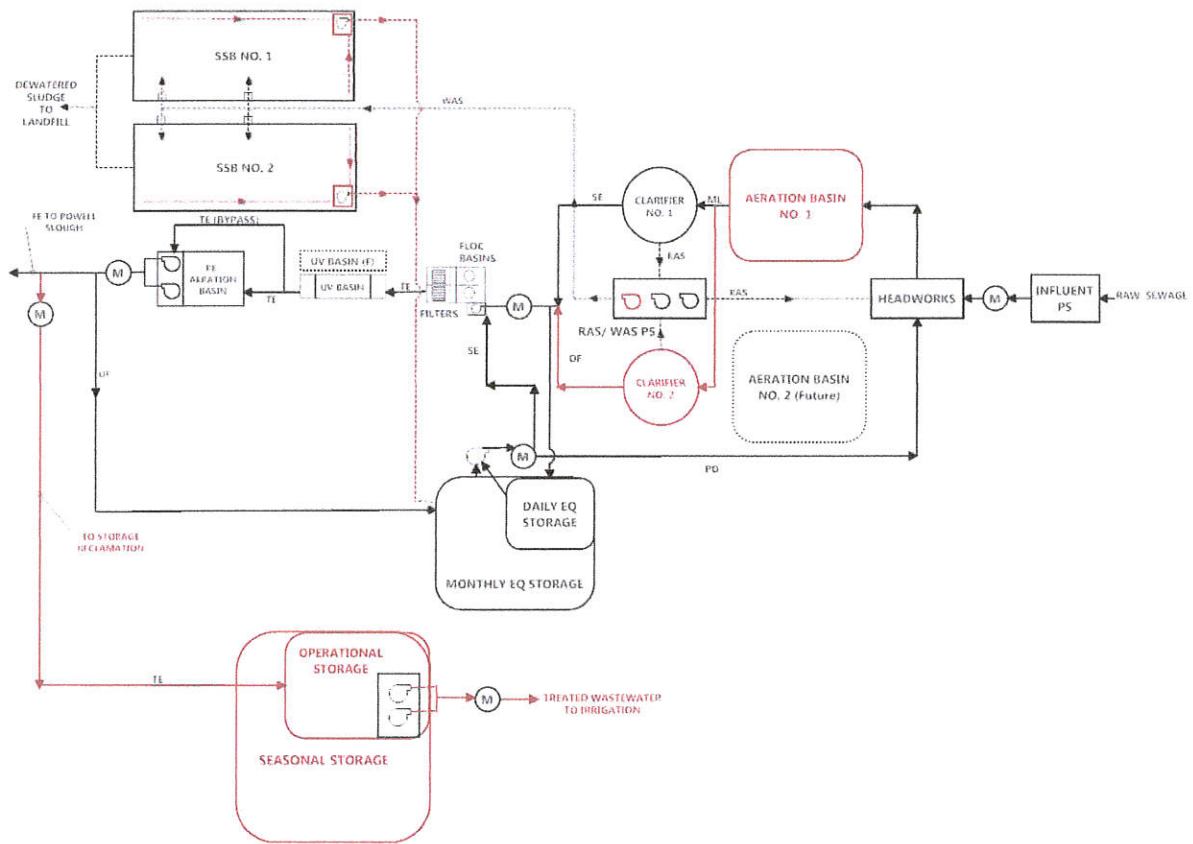


Figure 2
 City of Colusa WWTTP Process Flow Diagram with Proposed Improvements



Figure 3
 Proposed WWTP Improvements for Denitrification

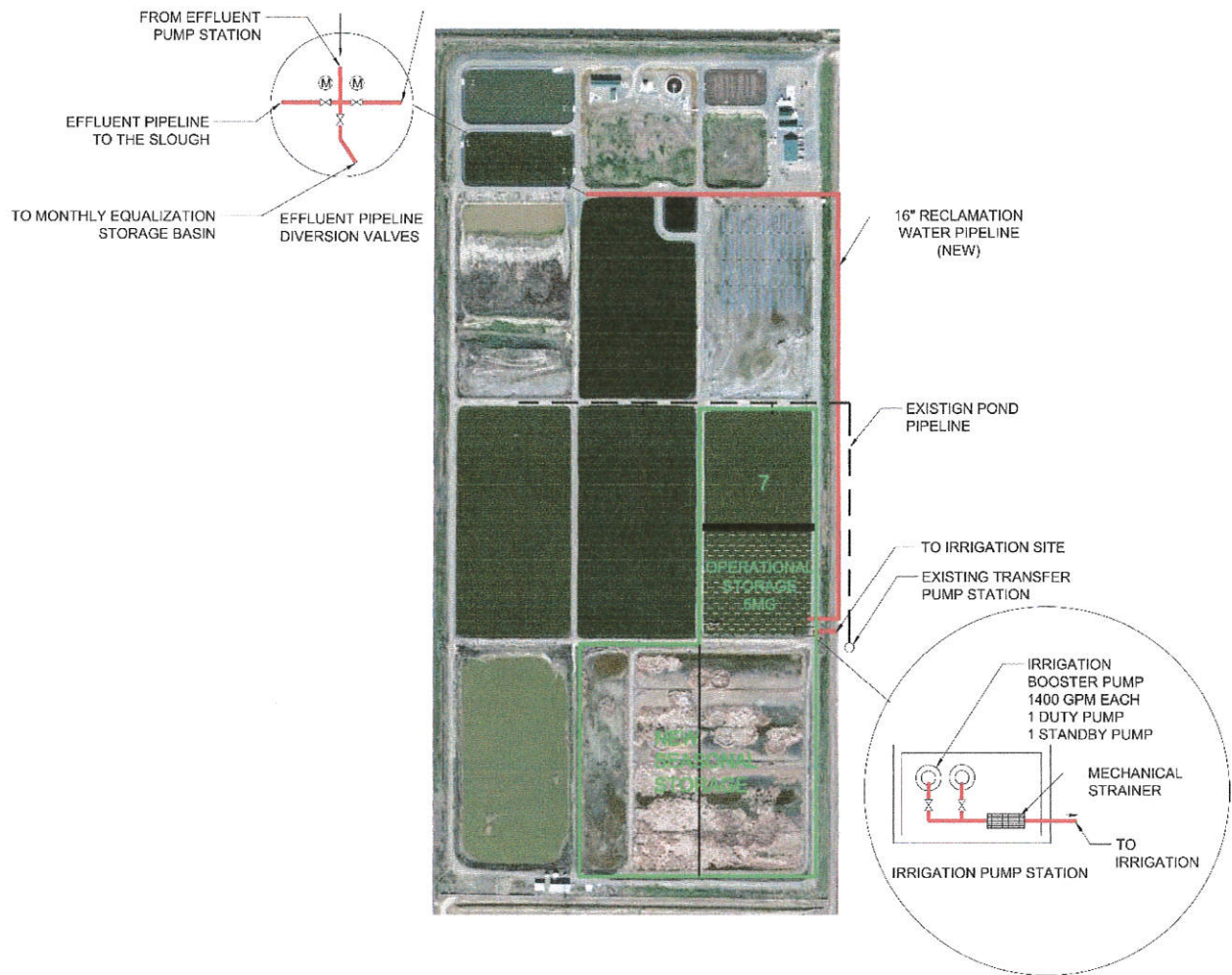


Figure 4
 Water Reclamation Pipeline, Storage, and Pumping Facilities

Attachment 4

CEQA Documents Including Addendum

DRAFT
Initial Study and Proposed Mitigated Negative Declaration
City of Colusa Wastewater Treatment Plant Upgrade Project



Lead Agency:

City of Colusa
425 Webster
Street
Colusa , CA



City of
Colusa



Brewer Environmental
Regulatory Compliance

December, 2014

Funding for this plan has been provided in full or in part through an agreement with the State Water Resources Control Board. The contents of this document do not necessarily reflect the views and policies of the State Water Resources Control Board, nor does mention of trade names or commercial products constitute endorsement or recommendation for use. (Gov. Code, § 7550; 40 CFR § 31.20)

