

2. Photographs upstream & downstream of the point of diversion, and at the place of use, as requested on page 4 of the change petition form.



- Along the stream channel immediately downstream from point of diversion.

- Along the stream channel immediately upstream from point of diversion.



4" PVC pipe to connect to existing 3" PVC pipe for effluent discharge from WWTP.



Pump system pumping water from existing Sewer Manhole to existing WWTP.

- At the place where water subject to this water right will be used.



North view from Southwest corner of proposed Area of use for Infiltration/Evaporation Ponds.

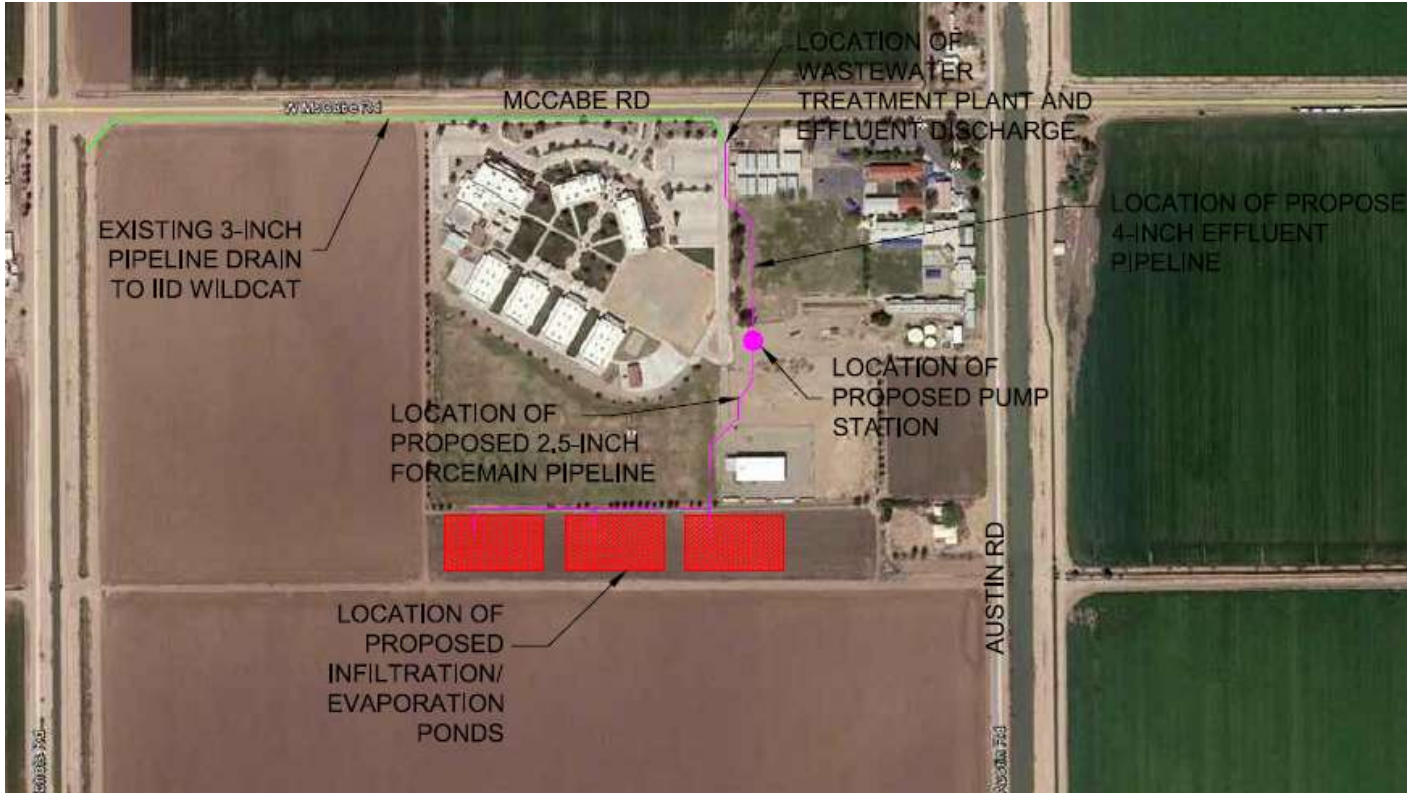


Northeast view from Southwest corner of proposed Area of use for Infiltration/Evaporation Ponds.



East view from Southwest corner of proposed Area of use for Infiltration/Evaporation Ponds.

3. Map identifying the location of the point of discharge, area of use, and locaton of the wastewater facilities.



4. Table showing the monthly average discharge rate and the expected change.

Average Rate of Discharge (cubic feet per second)												
	Jan	Feb	Mar	Apr	May	Jun	Jul	Aug	Sep	Oct	Nov	Dec
Present:	0.0083	0.0095	0.0078	0.0076	0.0076	0.0021	0.0028	0.0040	0.0077	0.0062	0.0086	0.0088
Proposed:	0.0000	0.0000	0.0000	0.0000	0.0000	0.0000	0.0000	0.0000	0.0000	0.0000	0.0000	0.0000
Change:	0.0083	0.0095	0.0078	0.0076	0.0076	0.0021	0.0028	0.0040	0.0077	0.0062	0.0086	0.0088