

**North Gualala Water Company Petition for Change
Permit 14853 (Application 21883)**

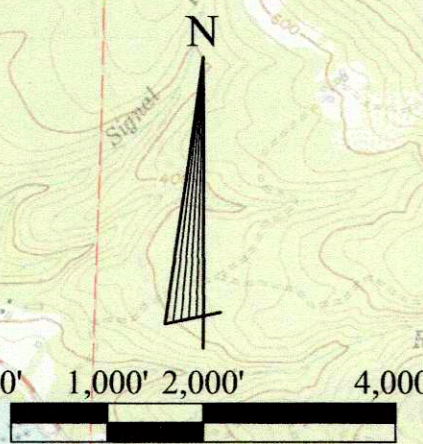
Attachment 7

Petition Maps

The following page contains an 8.5 x 11-inch copy of the engineer's map that shows the authorized points of diversion and place of use for Permit 14853, and the requested minor correction to text description of the authorized place of use. The 22 x 34-inch mylar original and a 22 x 34-inch paper copy of this map will be filed with the petition.

R16W R15W

R15W R14W



T11N

Point of Diversion:

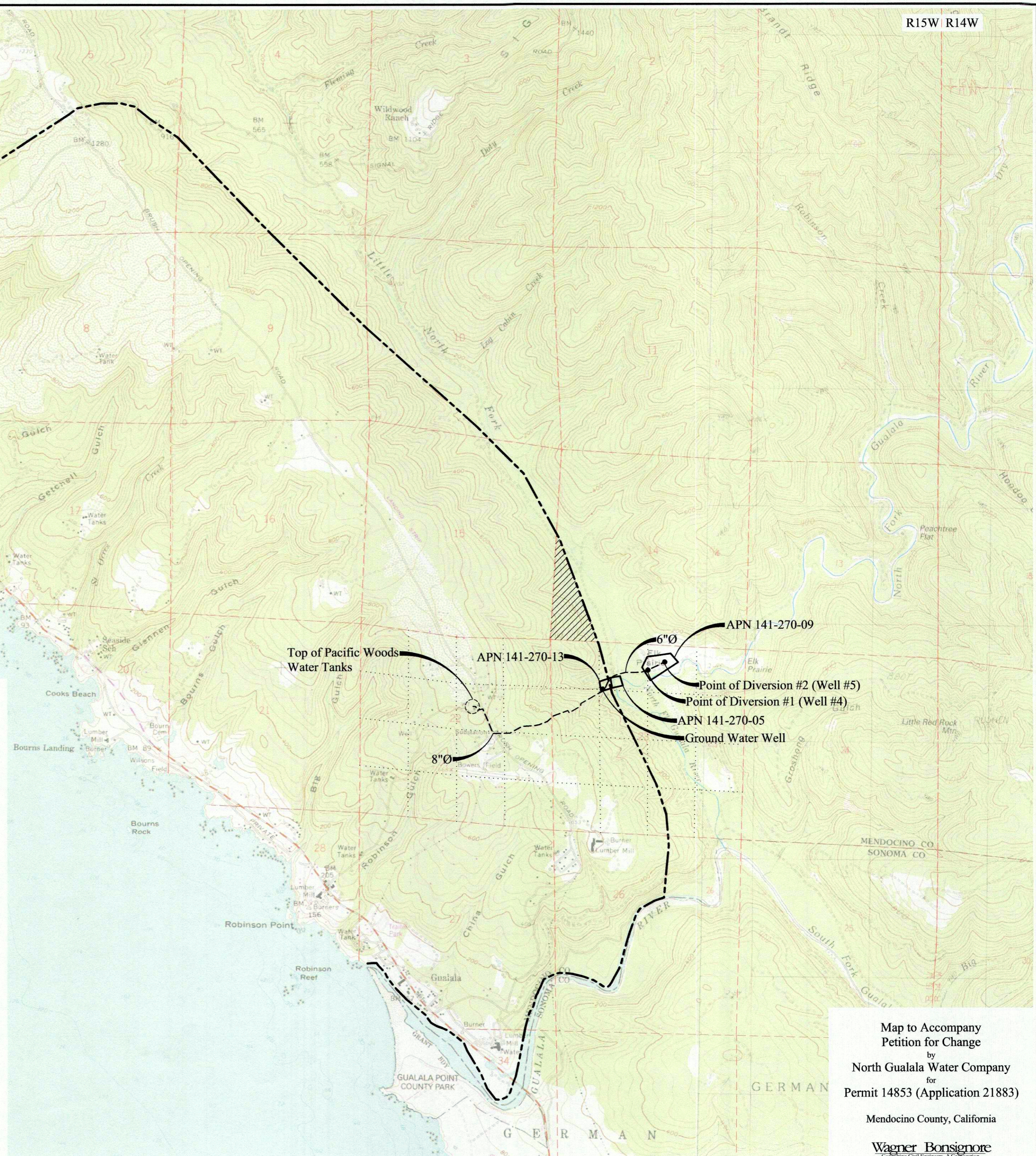
Map Point	Description
Well #4	Located N.2,053,735 and E.6,132,248, California Coordinate System, Zone 2, NAD83. Being within the NW $\frac{1}{4}$ of NE $\frac{1}{4}$ of Section 23, T11N, R15W, MDB&M.
Well #5	Located N.2,053,963 and E.6,132,716, California Coordinate System, Zone 2, NAD83. Being within the NW $\frac{1}{4}$ of NE $\frac{1}{4}$ of Section 23, T11N, R15W, MDB&M.

Legend

	Parcel Boundary
	Authorized Place of Use on Map Dated December 26, 1995 and Lands Added by Order WR-99-09-DWR
	Pipeline
	Requested Correction to Authorized Place of Use

I, NICHOLAS F. BONSIGNORE OF 2151 RIVER PLAZA DRIVE, SUITE 100, SACRAMENTO, CALIFORNIA, DO HEREBY CERTIFY THAT THIS MAP WAS PREPARED UNDER MY DIRECT SUPERVISION BASED ON U.S.G.S. 7.5 MINUTE QUADRANGLES FOR MCGUIRE RIDGE AND GUALALA, CA, AND ON A MAP DATED DECEMBER 26, 1995, ON FILE WITH THE STATE WATER RESOURCES CONTROL BOARD, DIVISION OF WATER RIGHTS, AND THAT IT CORRECTLY REPRESENTS THE PROJECT DESCRIBED IN THE ACCOMPANYING APPLICATION, AND SHOWS THE LOCATION OF STREAMS IN THE IMMEDIATE VICINITY, AND IS TRUE AND CORRECT TO THE BEST OF MY KNOWLEDGE AND BELIEF.

Nicholas F. Bonsignore 6/19/2019
 NICHOLAS F. BONSIGNORE DATE
 R.C.E. NO. 39422
 EXPIRES 12-31-2019



Map to Accompany
 Petition for Change
 by
 North Gualala Water Company
 for
 Permit 14853 (Application 21883)

Mendocino County, California

Wagner Bonsignore
 Consulting Civil Engineers, A Corporation