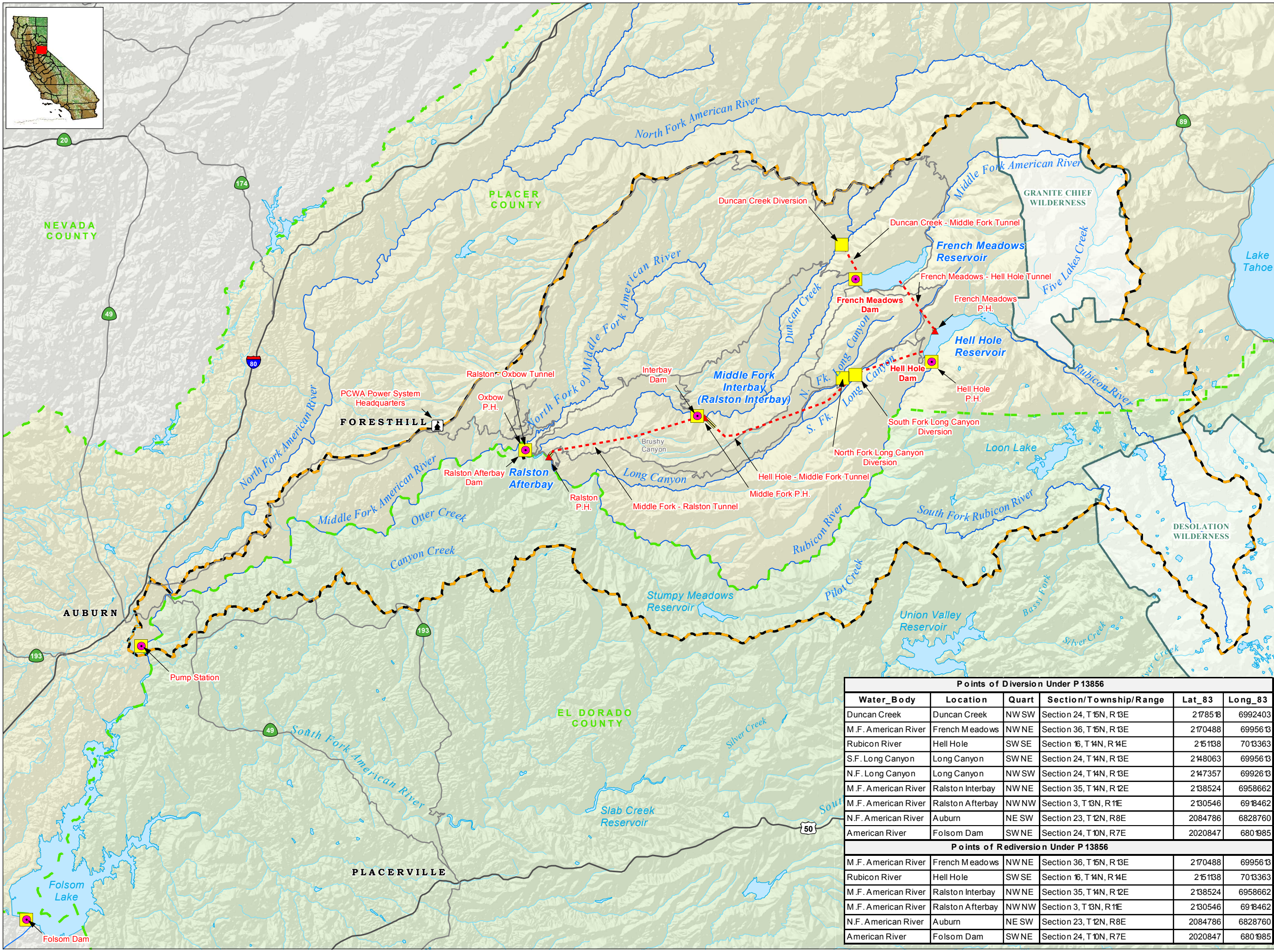


Attachment B

PCWA & WWD Points of Diversion and Rediversion




- Project Facilities***
- ▲ Powerhouse
 - - - - - Tunnel
 - = = = = = Penstock
- * All MFP facilities labeled in red.
- Transportation**
- Major Road
 - Minor Road
- Hydrography**
- Watercourse
 - Water Body
- Designated Boundary**
- - - - - County Boundary
 - Wilderness Area
 - - - - - Middle Fork American River Watershed**

**Modified from Calwater Ver. 2.2 to represent drainage above high-water mark of Folsom Lake

Points of Diversion (POD) and Rediversion (PORD)

- POD
- PORD

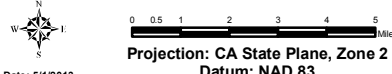
Points of Diversion Under P 13856					
Water_Body	Location	Quart	Section/Township/Range	Lat_83	Long_83
Duncan Creek	Duncan Creek	NW SW	Section 24, T 16N, R 13E	2178513	6992403
M.F. American River	French Meadows	NW NE	Section 36, T 16N, R 13E	2170488	6995613
Rubicon River	Hell Hole	SW SE	Section 16, T 14N, R 14E	215138	7013363
S.F. Long Canyon	Long Canyon	SW NE	Section 24, T 14N, R 13E	2148063	6995613
N.F. Long Canyon	Long Canyon	NW SW	Section 24, T 14N, R 13E	2147357	6992613
M.F. American River	Ralston Interbay	NW NE	Section 35, T 14N, R 12E	2138524	6958662
M.F. American River	Ralston Afterbay	NW NW	Section 3, T 13N, R 11E	2130546	6914462
N.F. American River	Auburn	NE SW	Section 23, T 12N, R 8E	2084786	6828760
American River	Folsom Dam	SW NE	Section 24, T 10N, R 7E	2020847	6801985
Points of Rediversion Under P 13856					
M.F. American River	French Meadows	NW NE	Section 36, T 16N, R 13E	2170488	6995613
Rubicon River	Hell Hole	SW SE	Section 16, T 14N, R 14E	215138	7013363
M.F. American River	Ralston Interbay	NW NE	Section 35, T 14N, R 12E	2138524	6958662
M.F. American River	Ralston Afterbay	NW NW	Section 3, T 13N, R 11E	2130546	6914462
N.F. American River	Auburn	NE SW	Section 23, T 12N, R 8E	2084786	6828760
American River	Folsom Dam	SW NE	Section 24, T 10N, R 7E	2020847	6801985



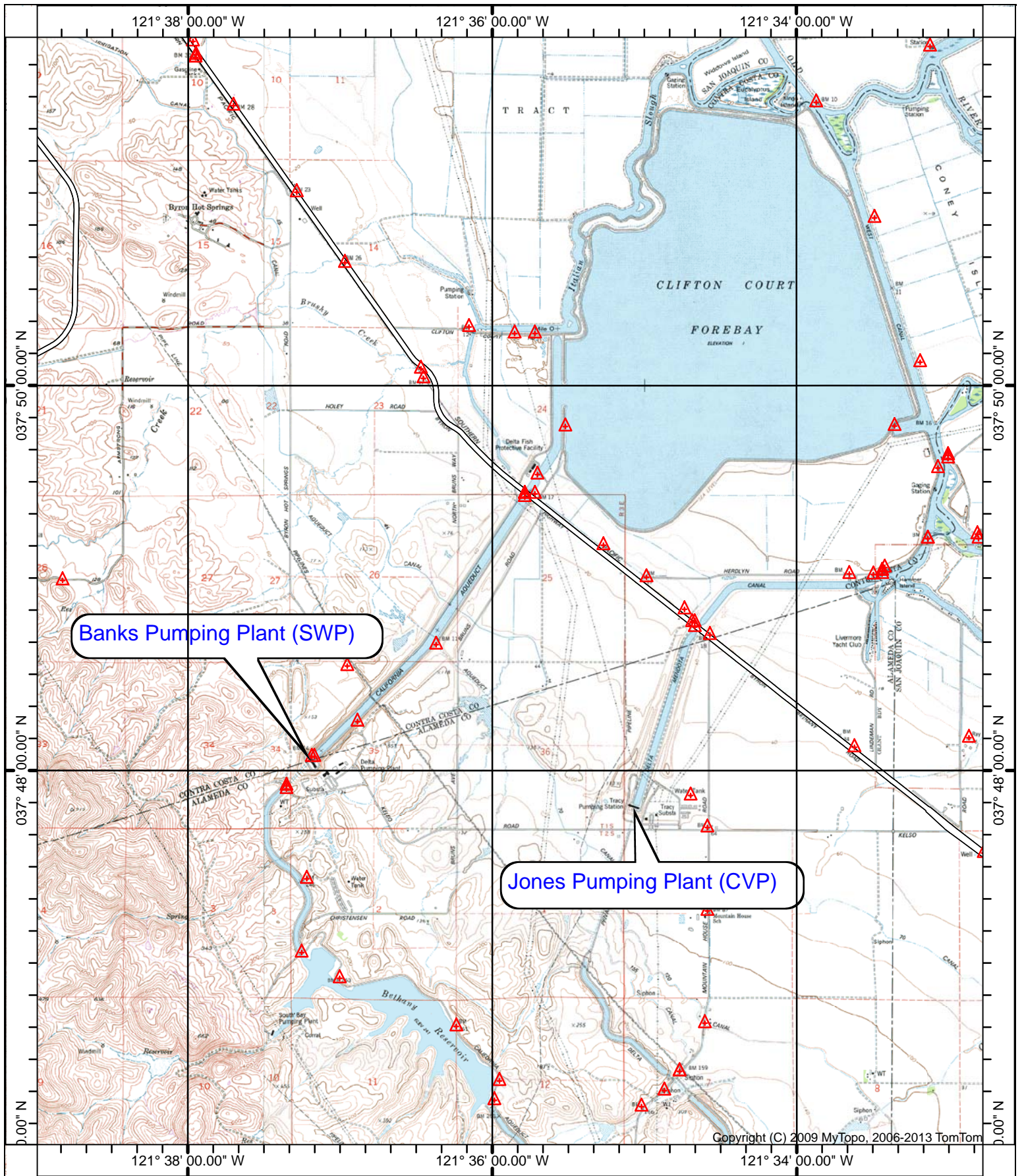
Placer County Water Agency
PCWA Petition for Change Involving Water Transfers
February 2014

Attachment B1

Points of Diversion and Rediversion under P13856



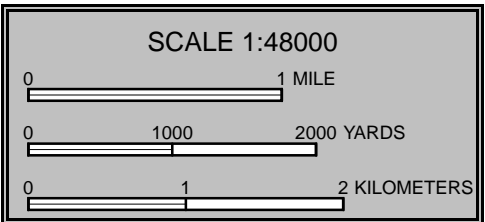
Projection: CA State Plane, Zone 2
Datum: NAD 83
Date: 5/12/2013



Banks Pumping Plant (SWP)

Jones Pumping Plant (CVP)

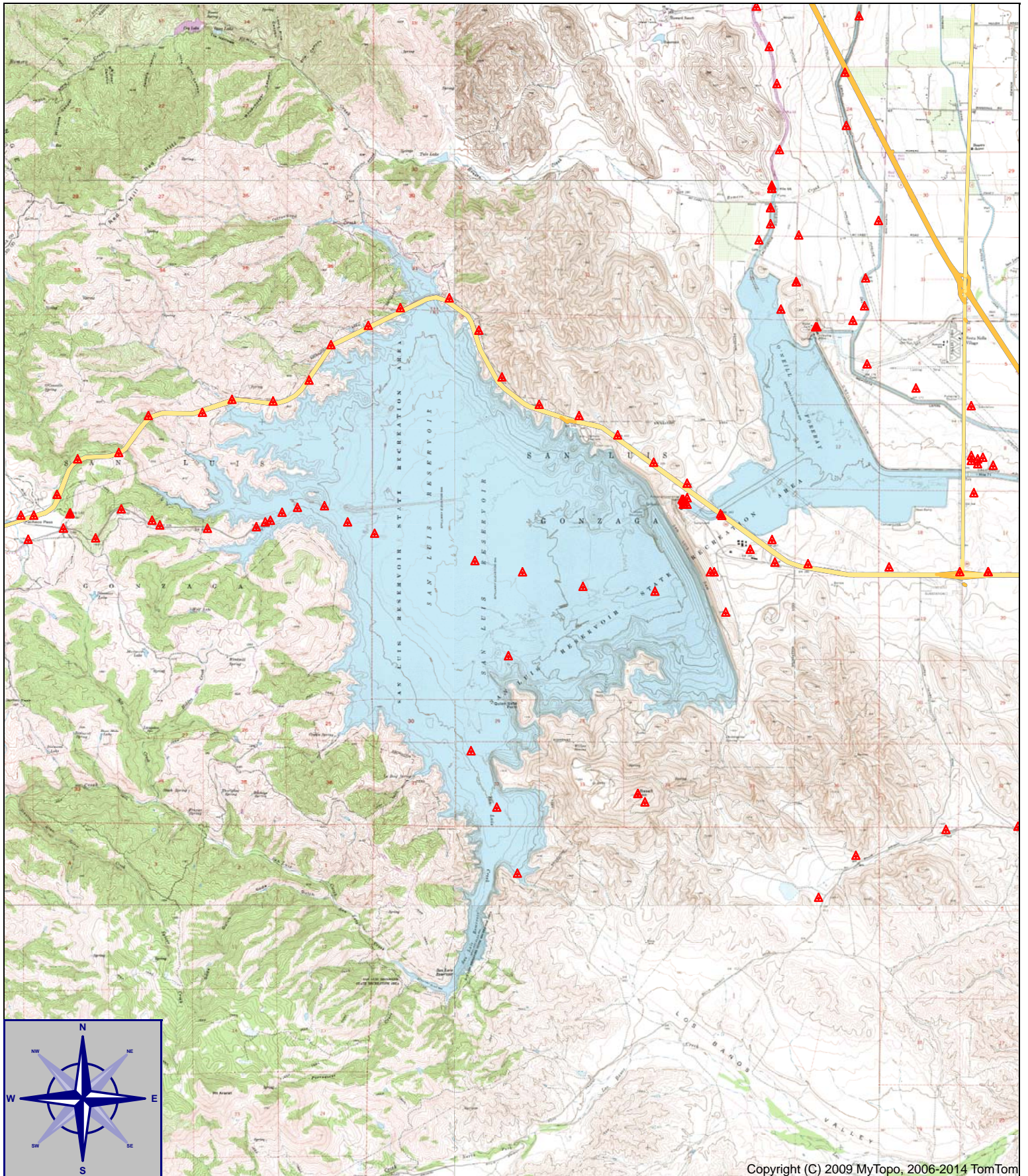
Copyright (C) 2009 MyTopo, 2006-2013 TomTom



Map Name: CLIFTON COURT FOREBAY
 Print Date: 03/27/13
 Scale: 1 inch = 4,000 ft.
 Map Center: 037° 48' 56.04" N 121° 35' 53.03" W
 Horizontal Datum: NAD27



MAP 1- Point of Rediversion



Copyright (C) 2009 MyTopo, 2006-2014 TomTom

ATTACHMENT B3- SAN LUIS RESERVOIR

POINT OF REDIVERSION (POR)

PCWA/WWD 35TAF TRANSFER-MAY 2013

SCALE 1:96000






WESTLANDS WATER DISTRICT
 3130 N. FRESNO ST. FRESNO, CALIFORNIA 93703
 559.224.1523 Fax 559.241.6277



NO SCALE

WESTLANDS WATER DISTRICT
FACILITIES MAP