

## Figures

**Cumulative inflow to Lake Pillsbury (acre-feet) from Oct 1 through**

	1/1	2/1	3/1	4/1	5/1	6/1	Water Supply Conditions Prevailing on 6/1 Apply Through 12/31
<b>NORMAL</b>	≥8,000	≥39,200	≥65,700	≥114,500	≥145,600	≥160,000	
<b>DRY</b>	<8,000	<39,200	<65,700	<114,500	<145,600	<160,000	
<b>CRITICAL</b>	<4,000	<20,000	<45,000	<50,000	<70,000	<75,000	

**LEGEND**

All flows are minimums, expressed in cubic feet per second.

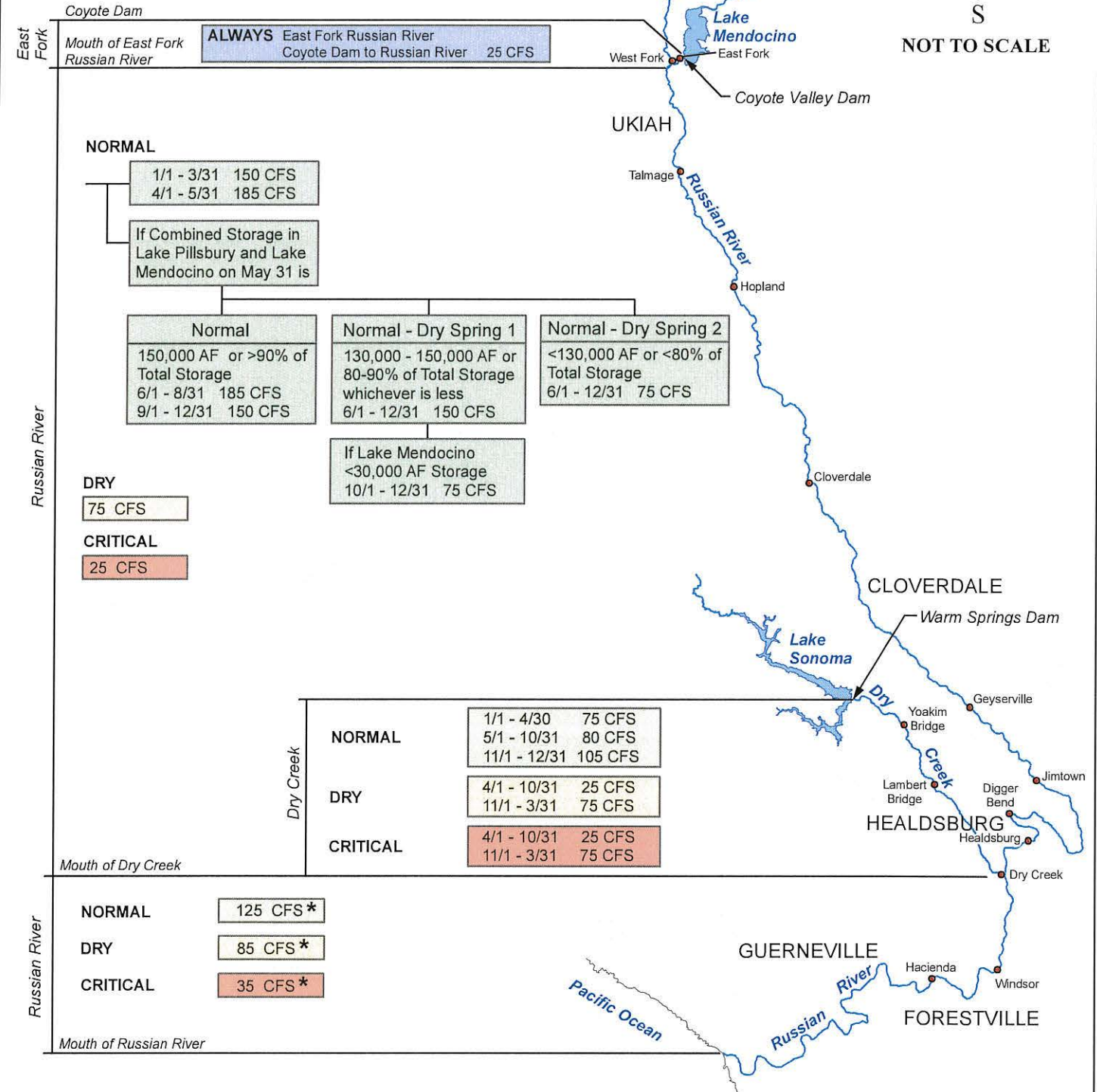
\* - Unless Lake Sonoma elevation is below 292.0, or if prohibited by the United States Government.

AF - Acre-Feet

● - USGS Stream Gage Compliance Points



**NOT TO SCALE**



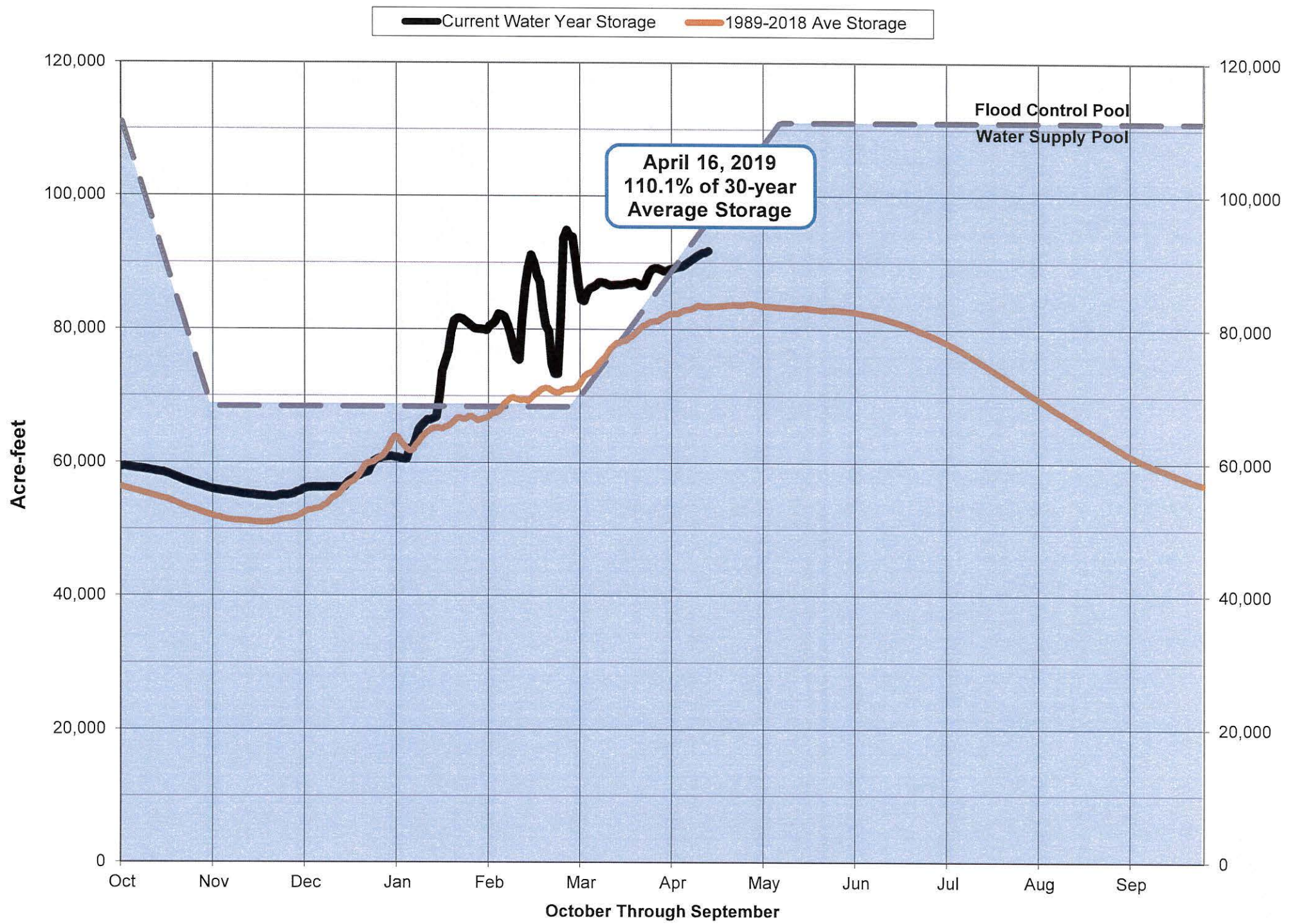
\\FILESERVER\DATA\wpr\nbaker\MS\Schum...\_Project\2011-USGS-Gauge-Streamflow.mxd, April 4, 2011



**Russian River Basin Streamflow Requirements**

Per State Water Resources Control Board Decision 1610, April 1986

Figure 1

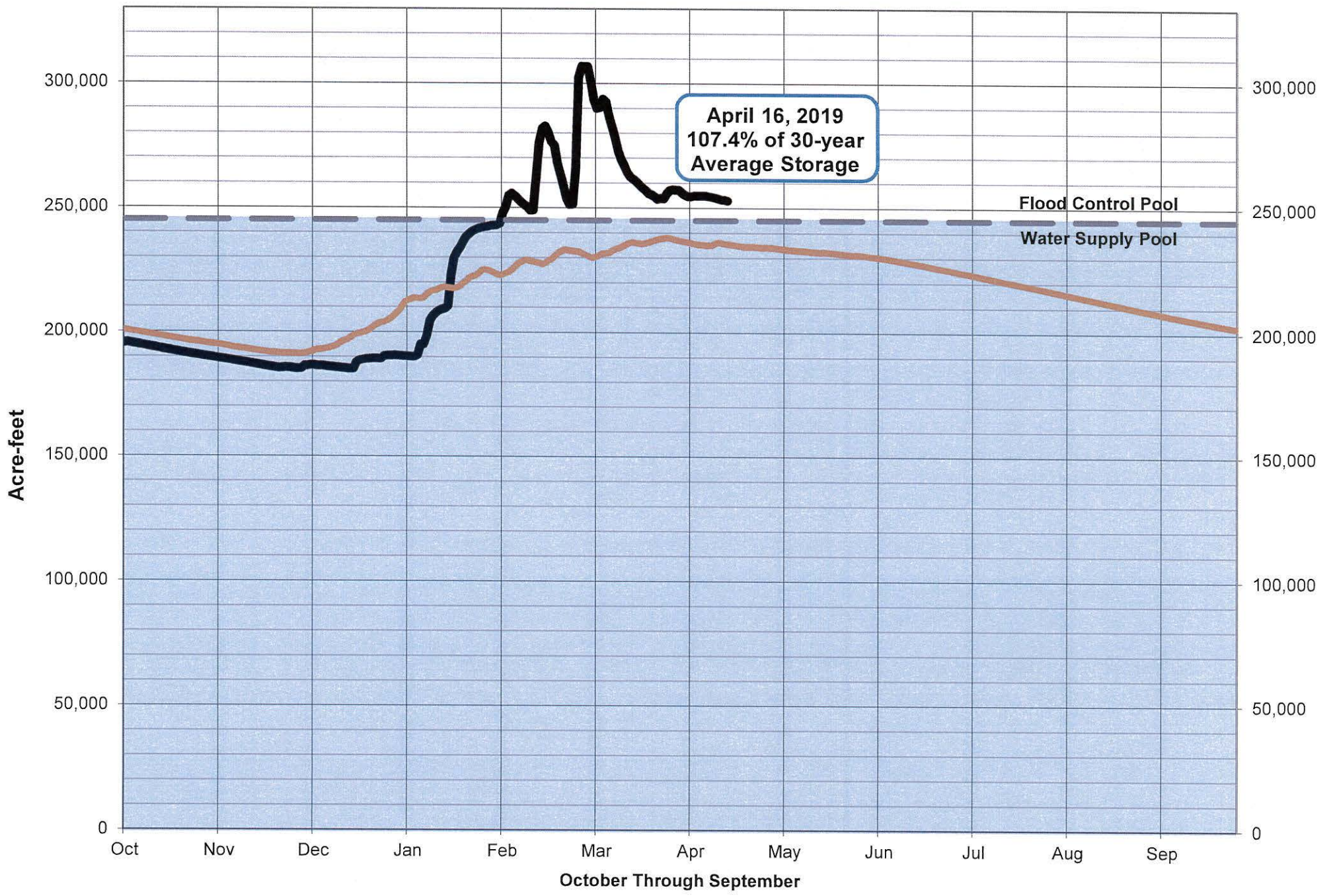


Lake Mendocino Storage

Figure 2

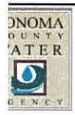


— Current Water Year Storage    — 1989-2018 Ave Storage



Lake Sonoma Storage

Figure 3



**LEGEND**

- AF - Acre-Feet
- - USGS Stream Gage Compliance Points



Upper Russian River

Water Supply Conditions	Temporary Requested Changes		D1610 Requirements	
	Minimum Streamflow (cfs)	Period	Minimum Streamflow (cfs)	Period
Normal	125	May 1 - Oct 15	185	Apr 1 - Aug 31
			150	Sep 1 - Oct 31
Normal - Dry Spring 1	125	May 1 - Oct 15	185	Apr 1 - May 31
			150	Jun 1 - Mar 31

Dry Creek

Water Supply Conditions	Temporary Requested Changes		D1610 Requirements	
	Minimum Streamflow (cfs)	Period	Minimum Streamflow (cfs)	Period
Normal	-	-	80	May 1 - Oct 31

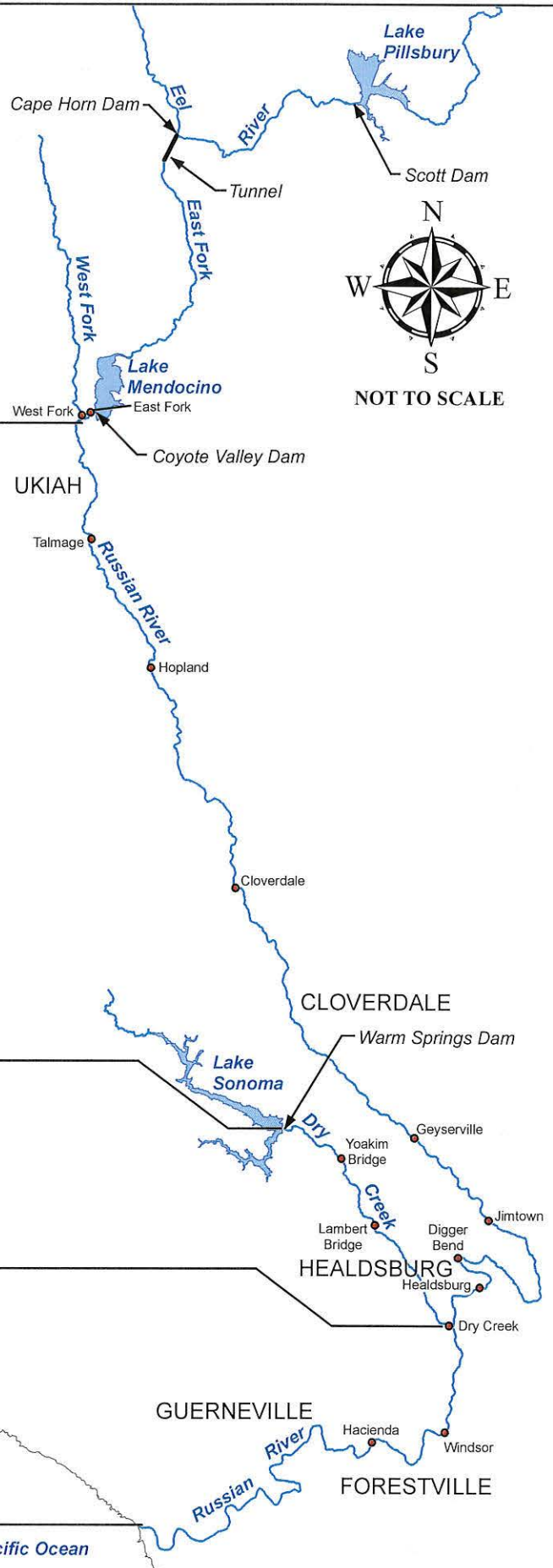
Mouth of Dry Creek

Lower Russian River

Water Supply Conditions	Temporary Requested Changes		D1610 Requirements	
	Minimum Streamflow (cfs)	Period	Minimum Streamflow (cfs)	Period
Normal	70	May 1 - Oct 15	125	Jan 1 - Dec 31

Mouth of Russian River

Pacific Ocean



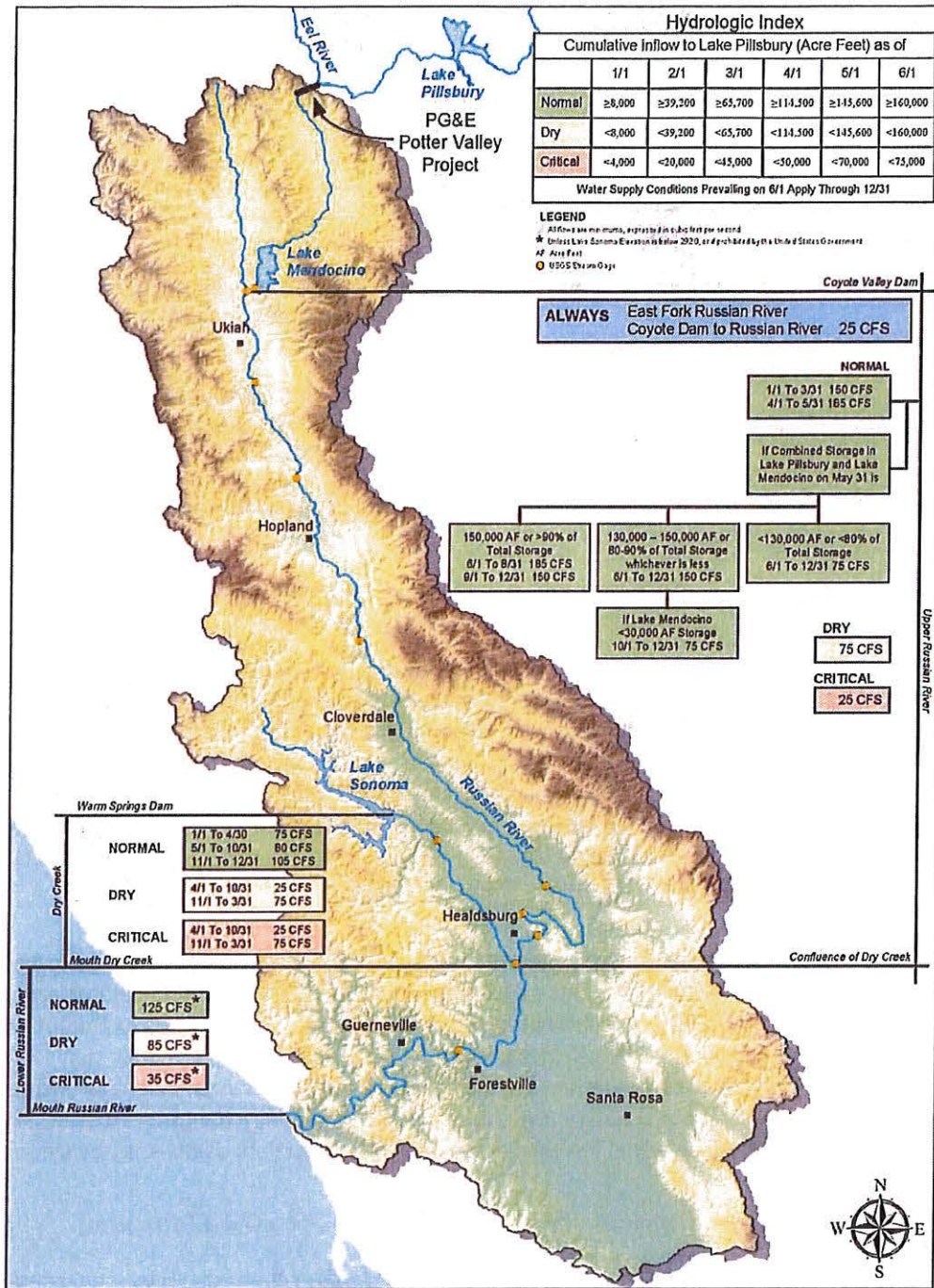
W:\FILES\SERVER\DATA\water\basin\schlam\_projects\2011-BIOLOGICAL\_OPINION.mxd April 4, 2011



**Russian River Biological Opinion  
Proposed Minimum Instream Flow Changes**  
Per National Marine Fisheries Service's Biological Opinion Issued September 24, 2008

Figure 4

# State Water Resources Control Board Decision 1610



## Russian River Basin Streamflow Requirements

Figure 1. Project location for Petition Requesting Approval of a Temporary Urgency Change in Water Right Permits 12947A, 12949, 12950, and 16596 in Mendocino and Sonoma counties.