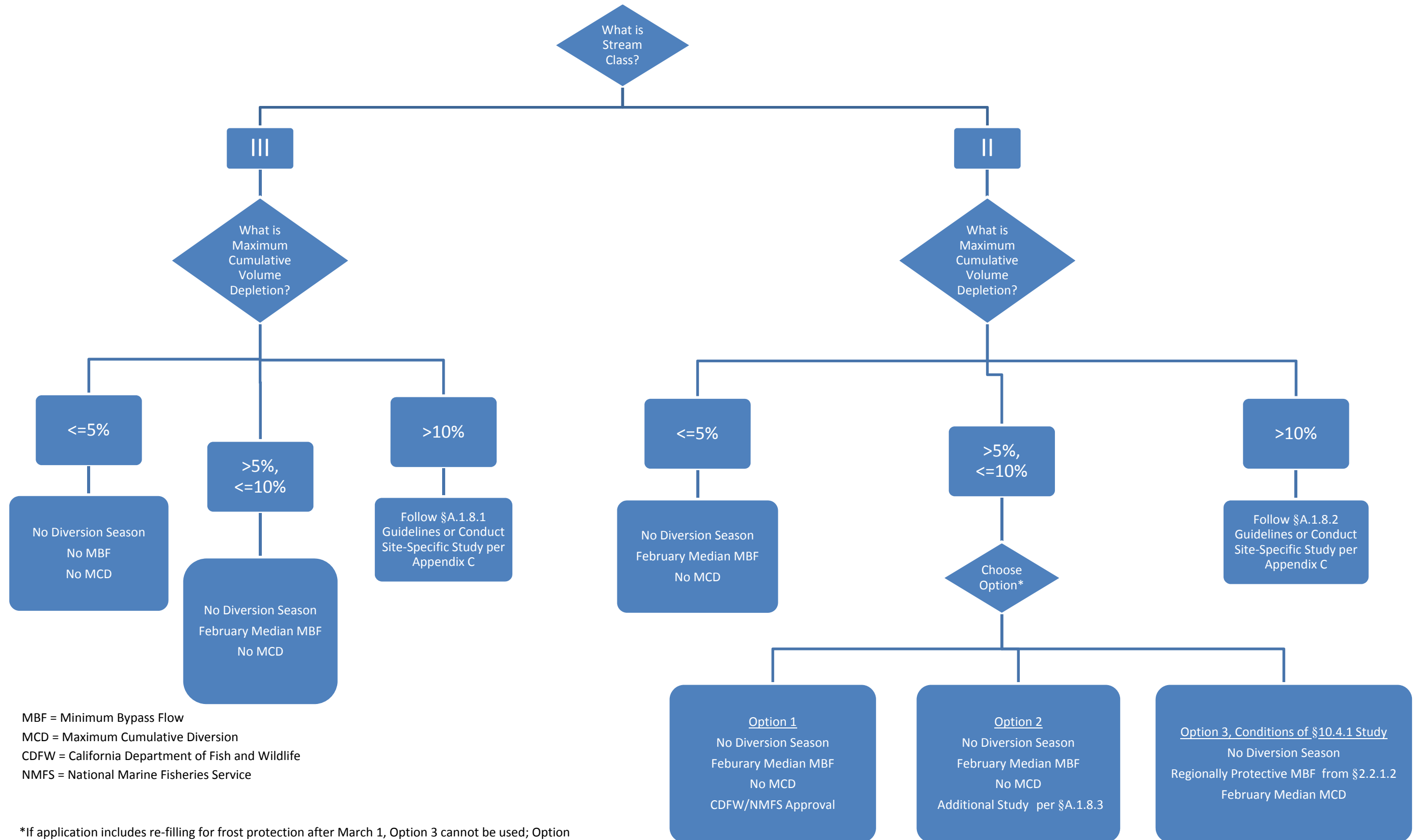


FLOW CHART ILLUSTRATING IMPELEMENTATION OF POLICY SECTION A.1.8.3 WITH ADDITIONAL CONDITIONS FROM VOLUME DEPLETION APPROACH STUDY



MBF = Minimum Bypass Flow
 MCD = Maximum Cumulative Diversion
 CDFW = California Department of Fish and Wildlife
 NMFS = National Marine Fisheries Service

*If application includes re-filling for frost protection after March 1, Option 3 cannot be used; Option 1 or 2 must be used.