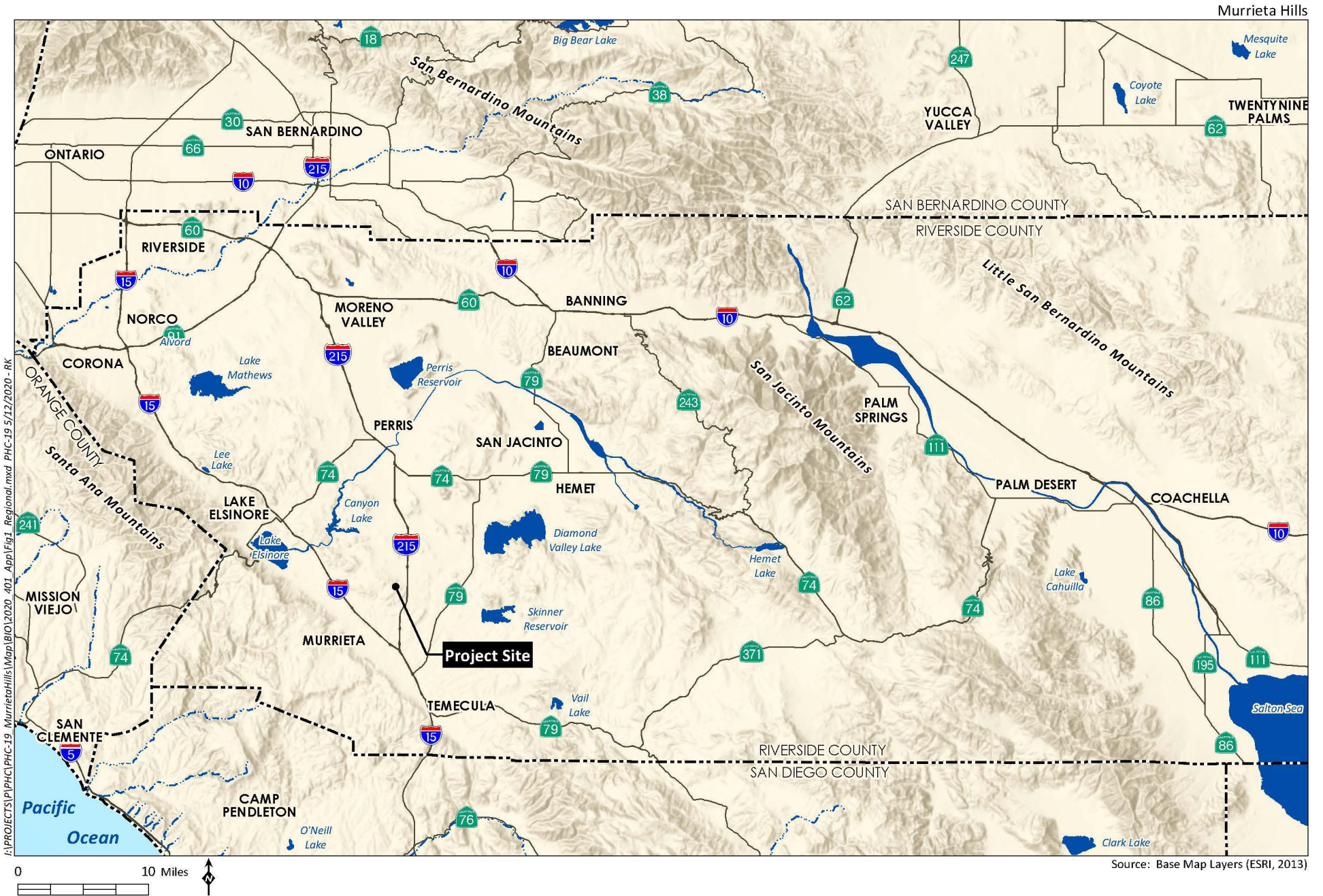
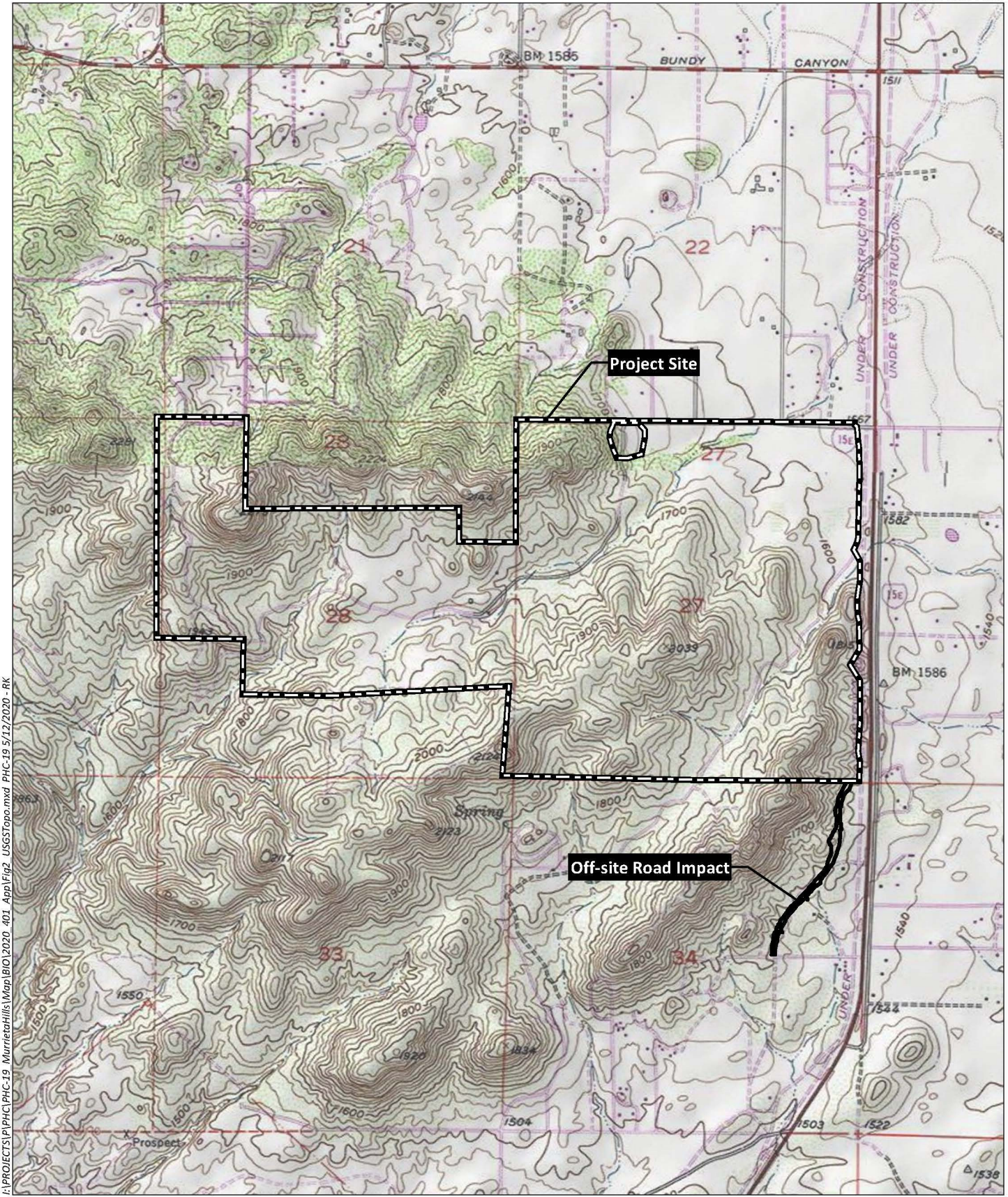


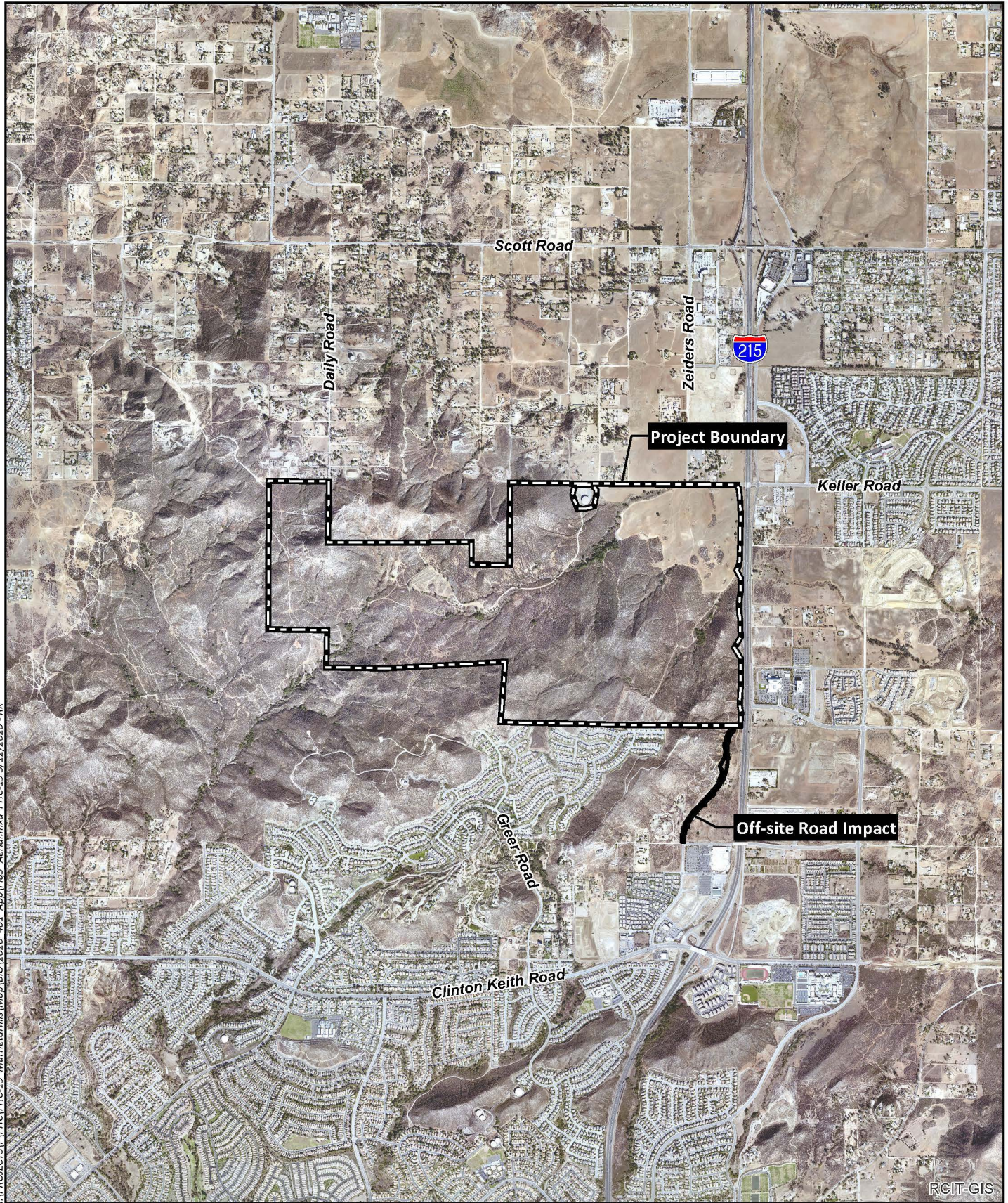
(This page intentionally left blank)





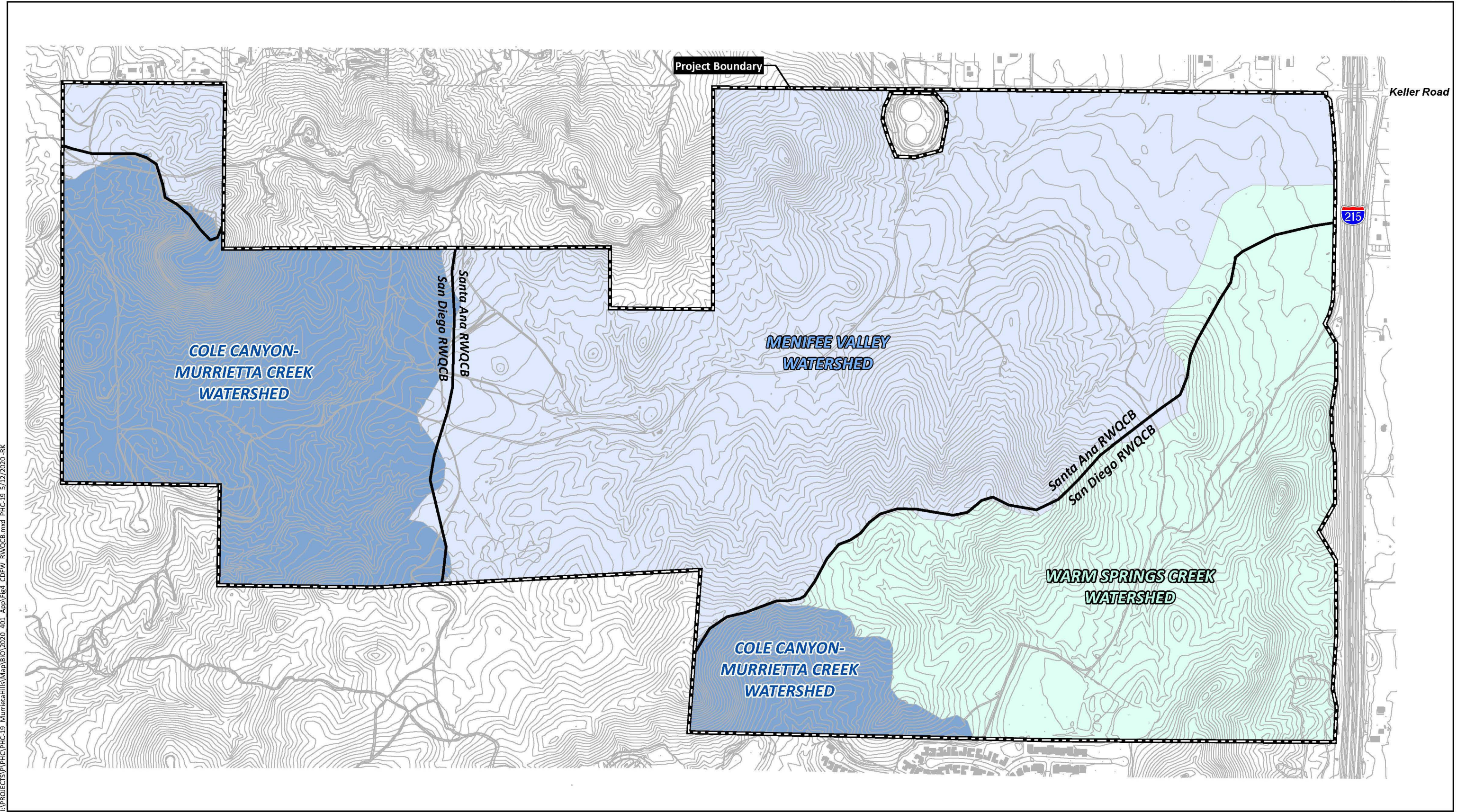
I:\PROJECTS\PHC\PHC-19 MurrietaHills\Map\BIO\2020 401 App\Fig2 USGStopo.mxd PHC-19 5/12/2020 - RK

Source: Romoland and Murrieta 7.5' Quad (USGS)



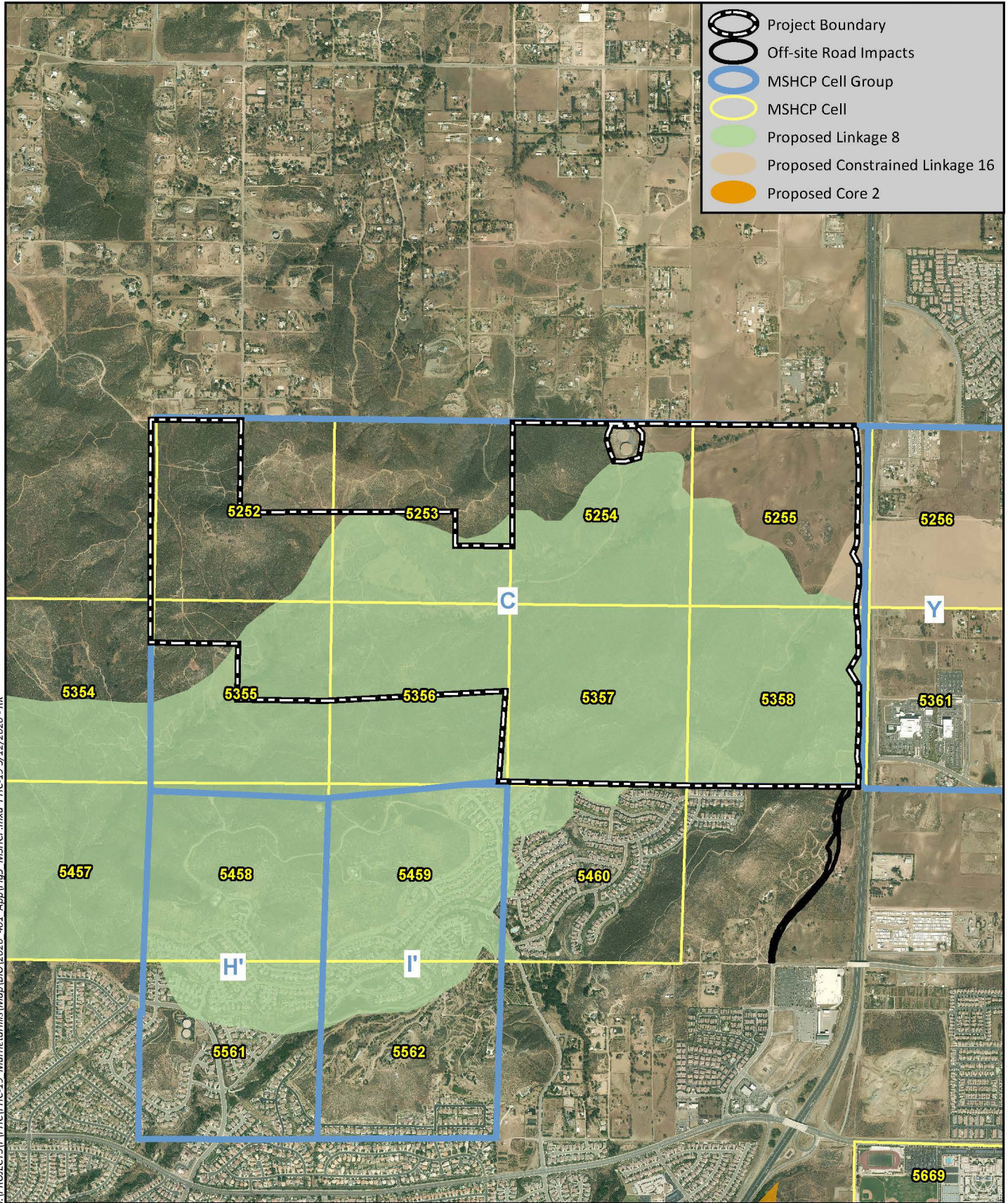
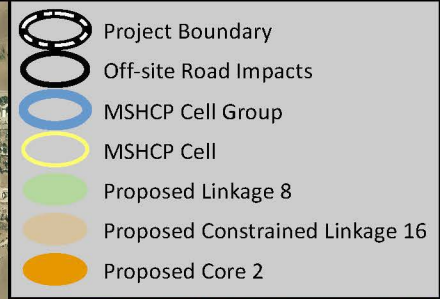
I:\PROJECTS\PHC\PHC-19_MurrietaHills\Map\BIO\2020_401_App\Fig3_Aerial.mxd PHC-19 5/12/2020 - RK

Source: Aerial (RCIT 2016)

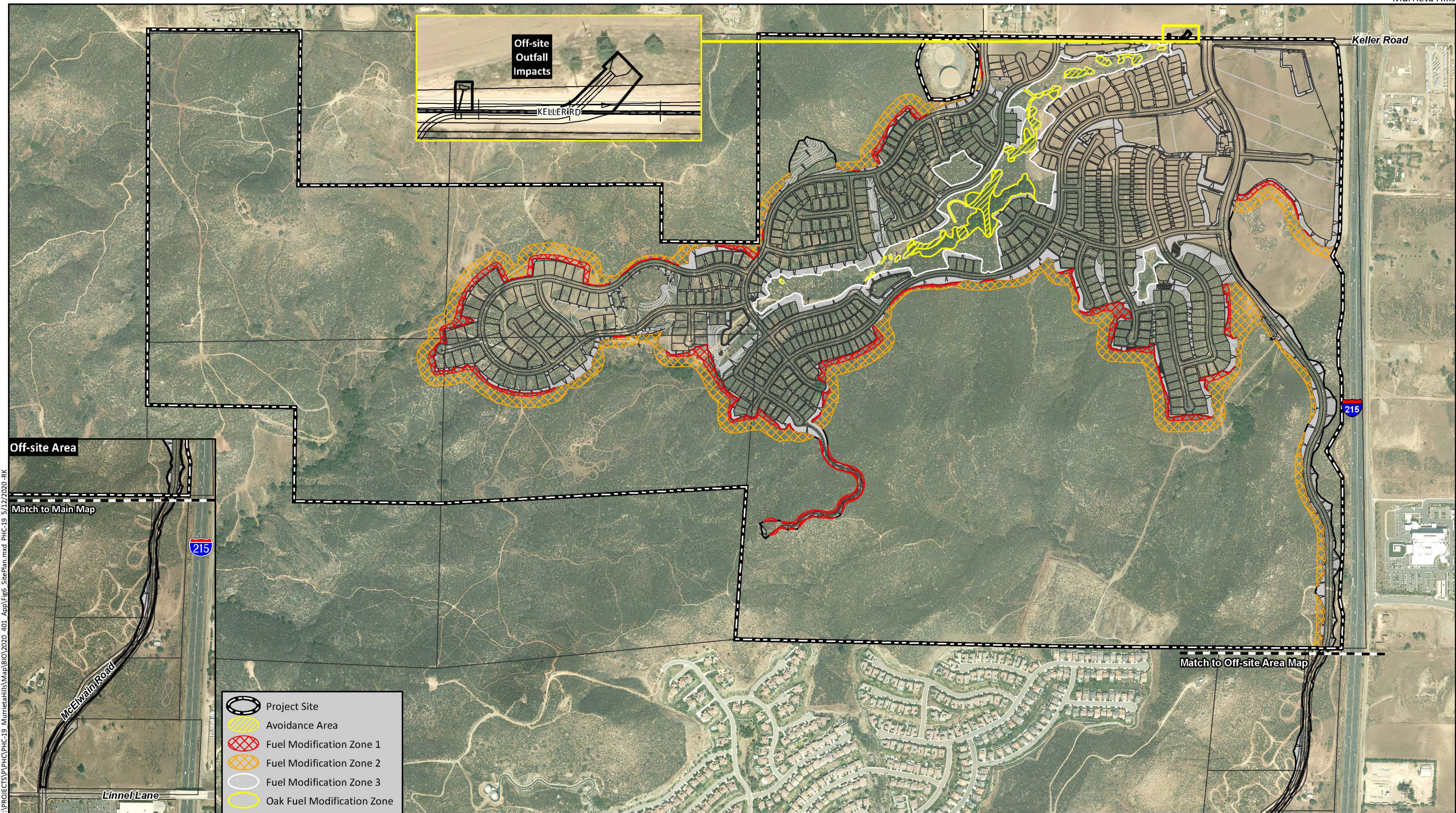


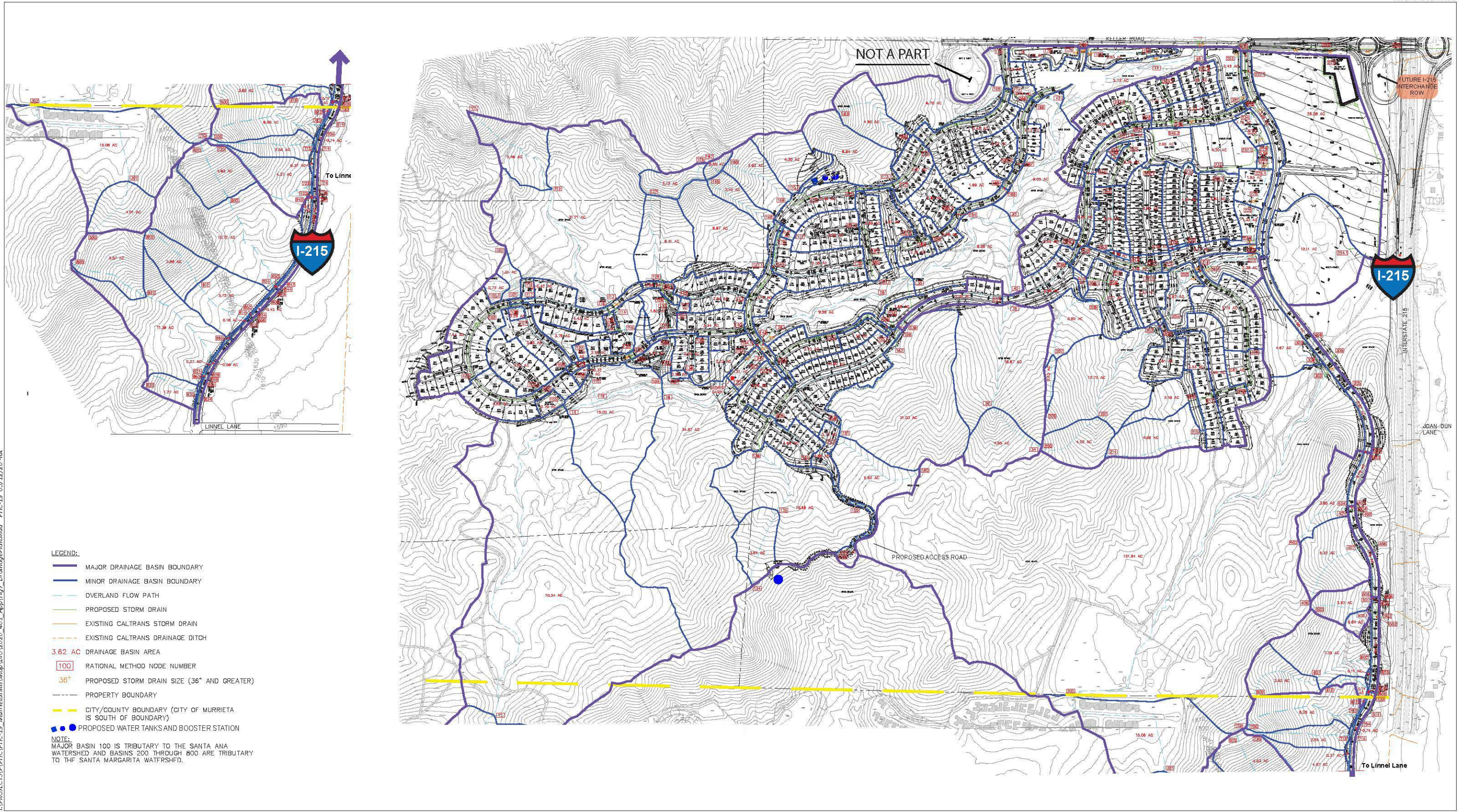
I:\PROJECTS\PHC\PHC-19_MurrietaHills\Map\BIO\2020_401_App\Fig4_CDFW_RWQCB.mxd PHC-19_5/12/2020 -RK

RWQCB Boundaries Source: State Water Resources Control Board, <http://www.waterboards.ca.gov>



Source: Aerial (RCIT 2016)





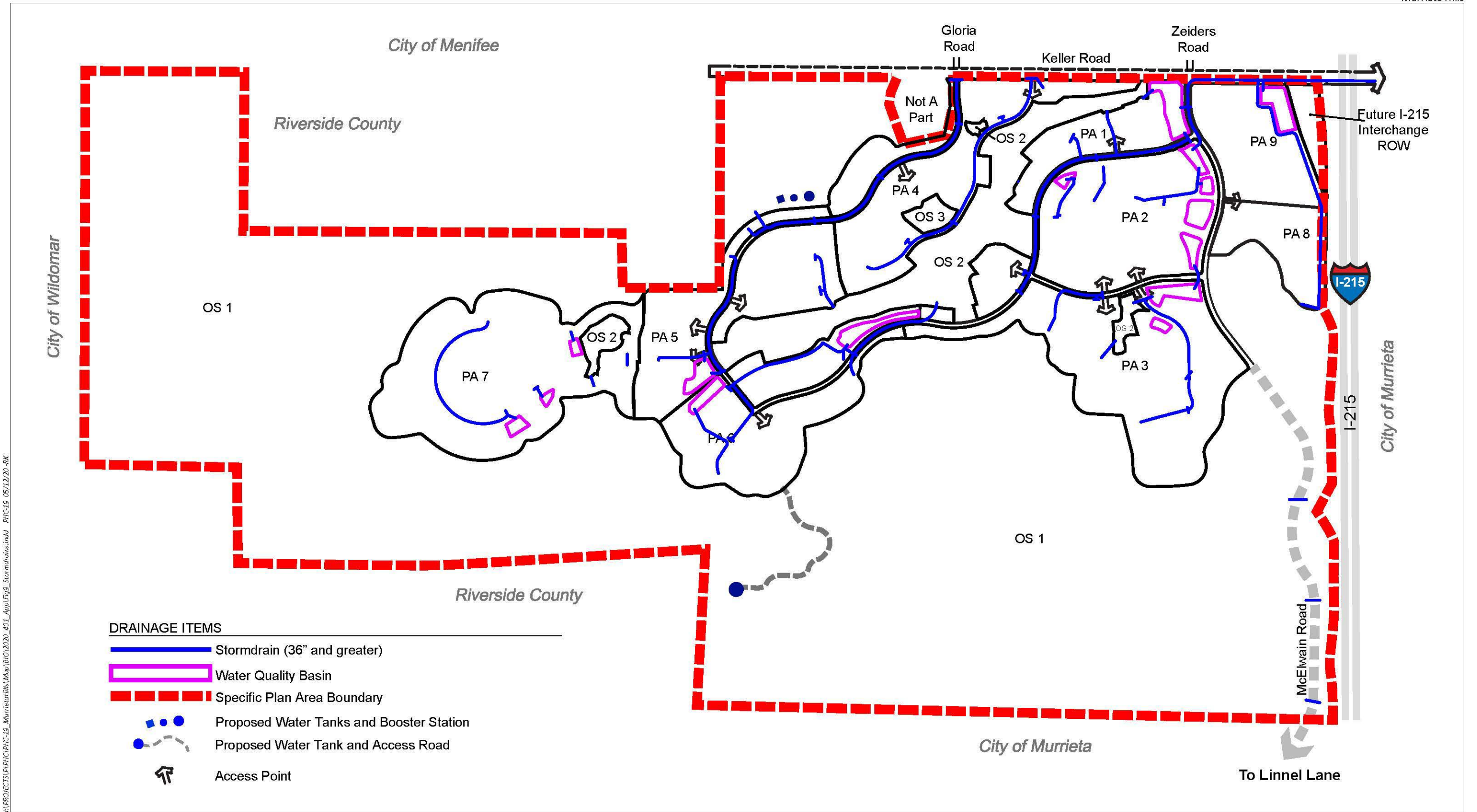
I:\PROJECTS\PHC\PHC-19_MurrietaHills\Map\B(0)2020_401_App\Fig7_DrainagePlan.mxd PHC-19_05/12/20-RK

LEGEND:

- MAJOR DRAINAGE BASIN BOUNDARY
- MINOR DRAINAGE BASIN BOUNDARY
- OVERLAND FLOW PATH
- PROPOSED STORM DRAIN
- EXISTING CALTRANS STORM DRAIN
- EXISTING CALTRANS DRAINAGE DITCH
- 3.62 AC DRAINAGE BASIN AREA
- 100 RATIONAL METHOD NODE NUMBER
- 36" PROPOSED STORM DRAIN SIZE (36" AND GREATER)
- - - PROPERTY BOUNDARY
- CITY/COUNTRY BOUNDARY (CITY OF MURRIETA IS SOUTH OF BOUNDARY)
- PROPOSED WATER TANKS AND BOOSTER STATION

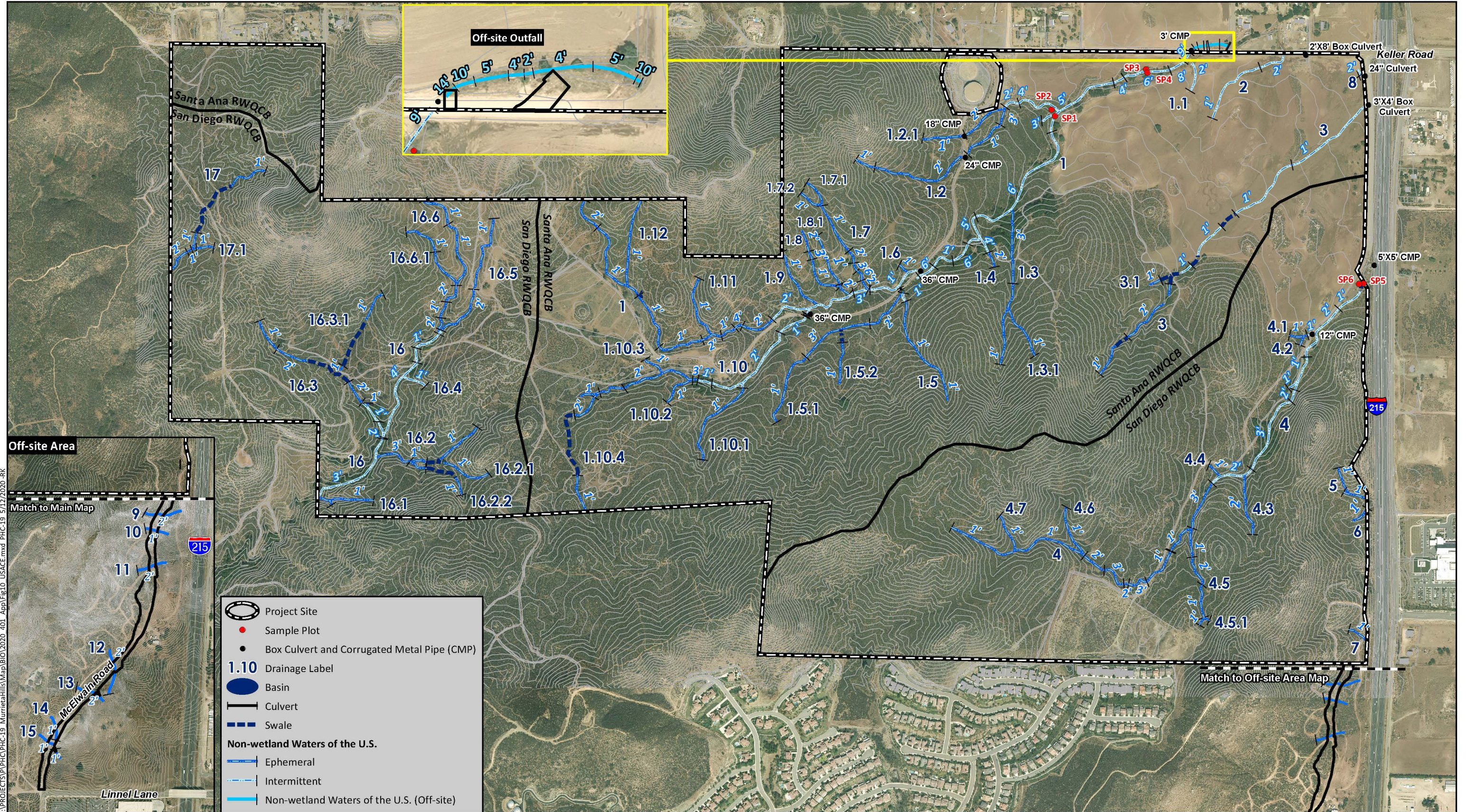
NOTE:
 MAJOR BASIN 100 IS TRIBUTARY TO THE SANTA ANA WATERSHED AND BASINS 200 THROUGH 800 ARE TRIBUTARY TO THE SANTA MARGARITA WATERSHED.

Source: Kimley Horn 2020



H:\PROJECTS\PHC\PHC-19_MurrietaHills\Map\B(0)2020_401_App\Fig9_Stormdrains.mxd PHC-19_05/12/20-RK

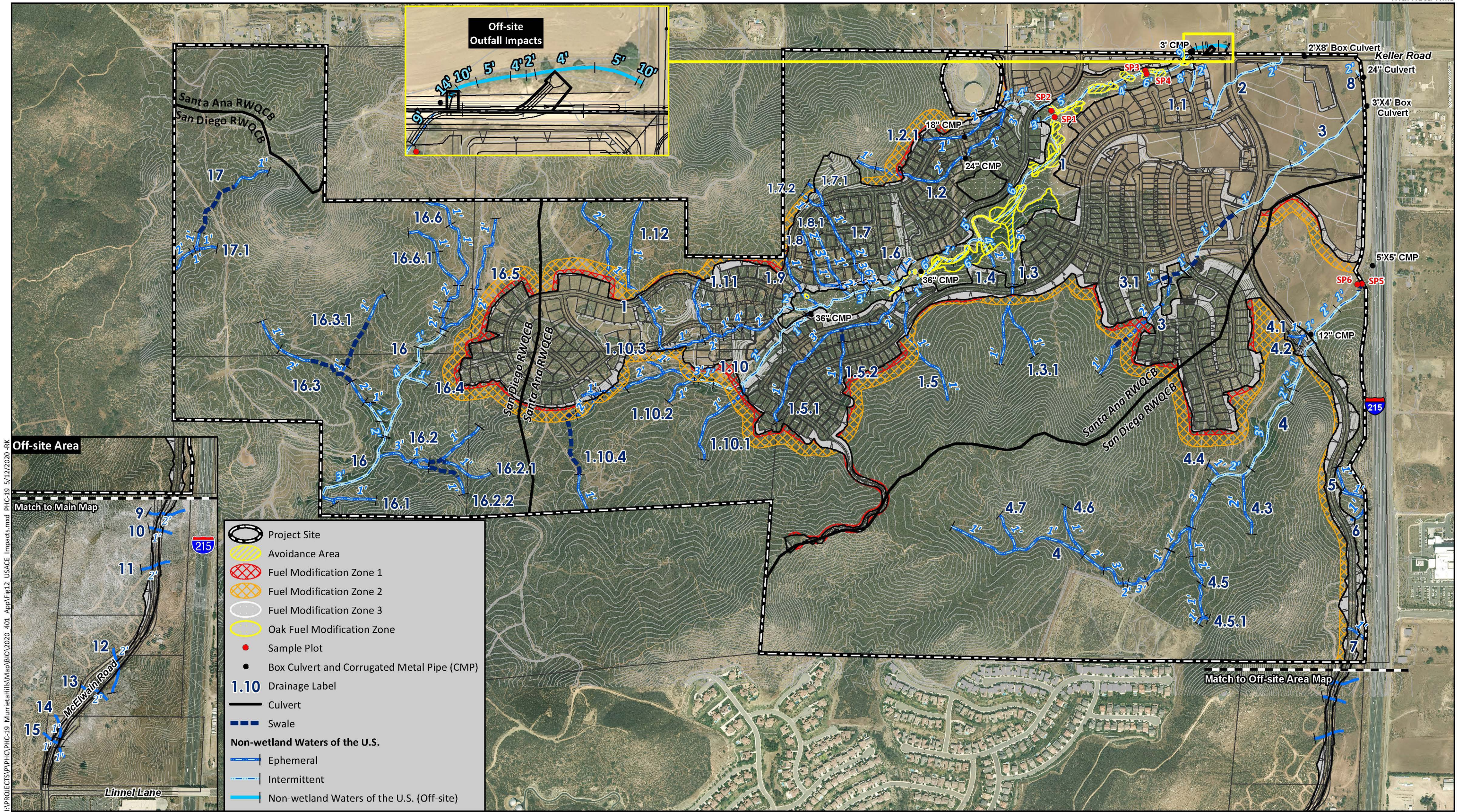
Source: Kimley Horn 2020



I:\PROJECTS\PHC\PHC-19_MurrietaHills\Map\BIO\2020_401_App\Fig10_USACE.mxd PHC-19 5/12/2020 -RK



Source: Aerial (SanGIS, 2014).



I:\PROJECTS\PHC\PHC-19_MurrietaHills\Map\BIO\2020_401_App\Fig12_USACE_Impacts.mxd PHC-19 5/12/2020 RK

Source: Aerial (SanGIS, 2014).

