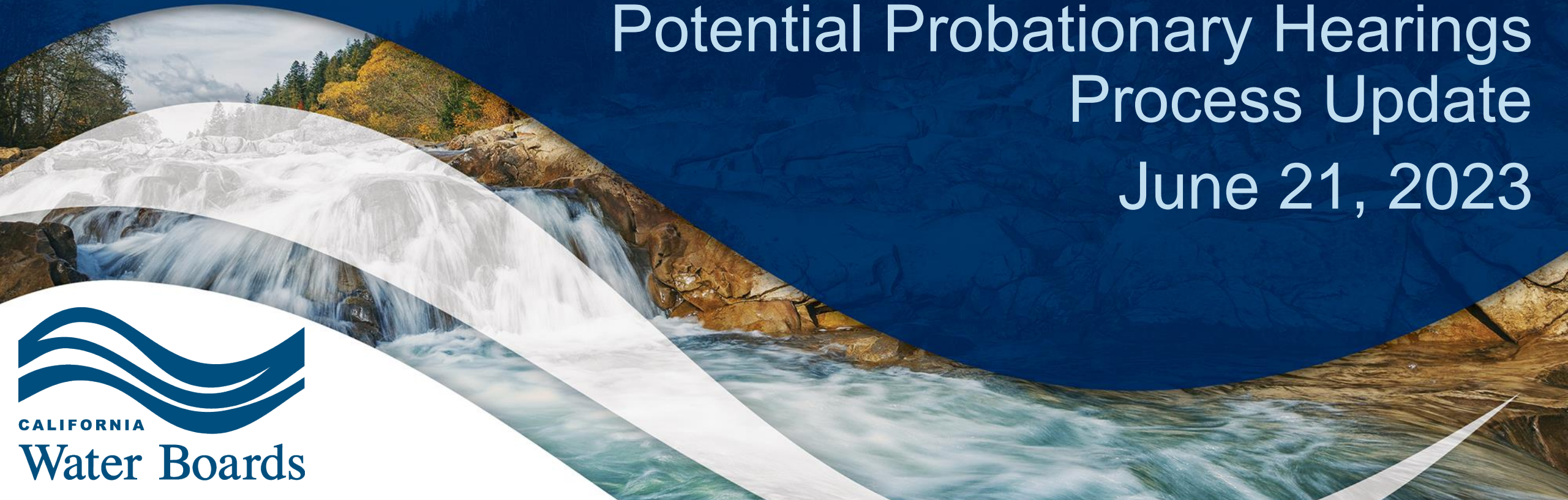


Sustainable Groundwater Management Act


Potential Probationary Hearings
Process Update
June 21, 2023



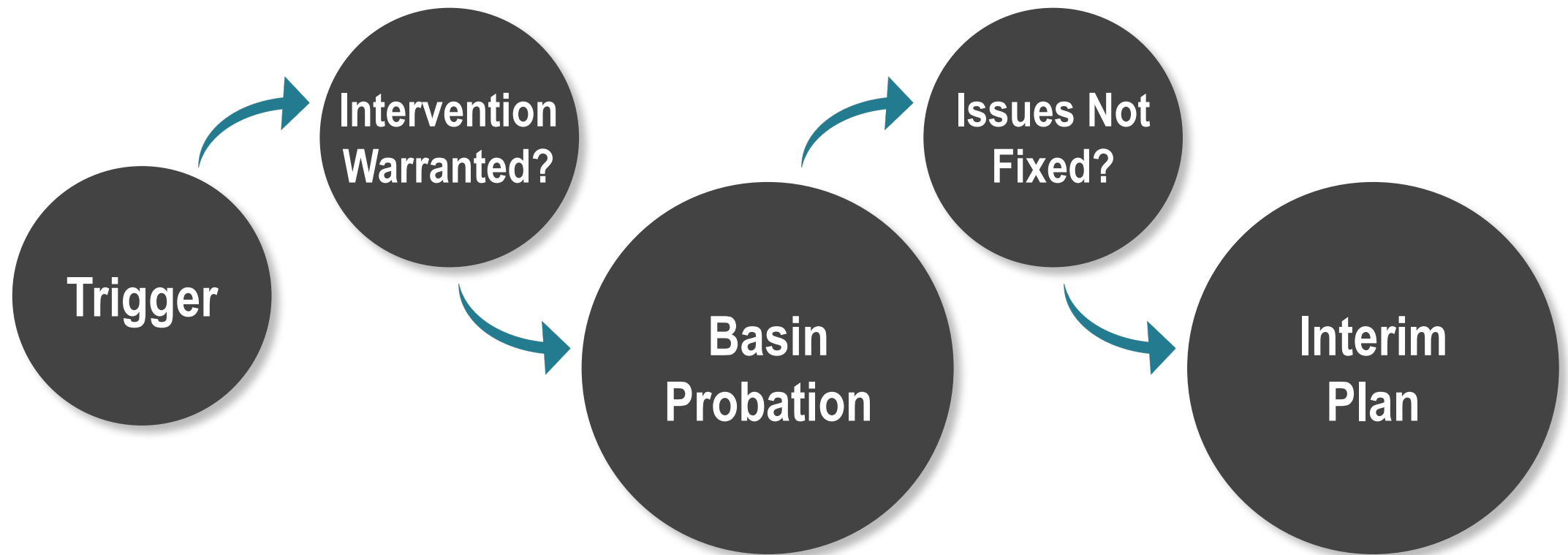
State Water Resources Control Board



TOPICS

- 1. State Intervention Background**
 - 2. Prioritization Considerations**
 - 3. Proposed Schedule & Rationale**
 - 4. Next Steps for the Board & GSAs**
- 

State Intervention



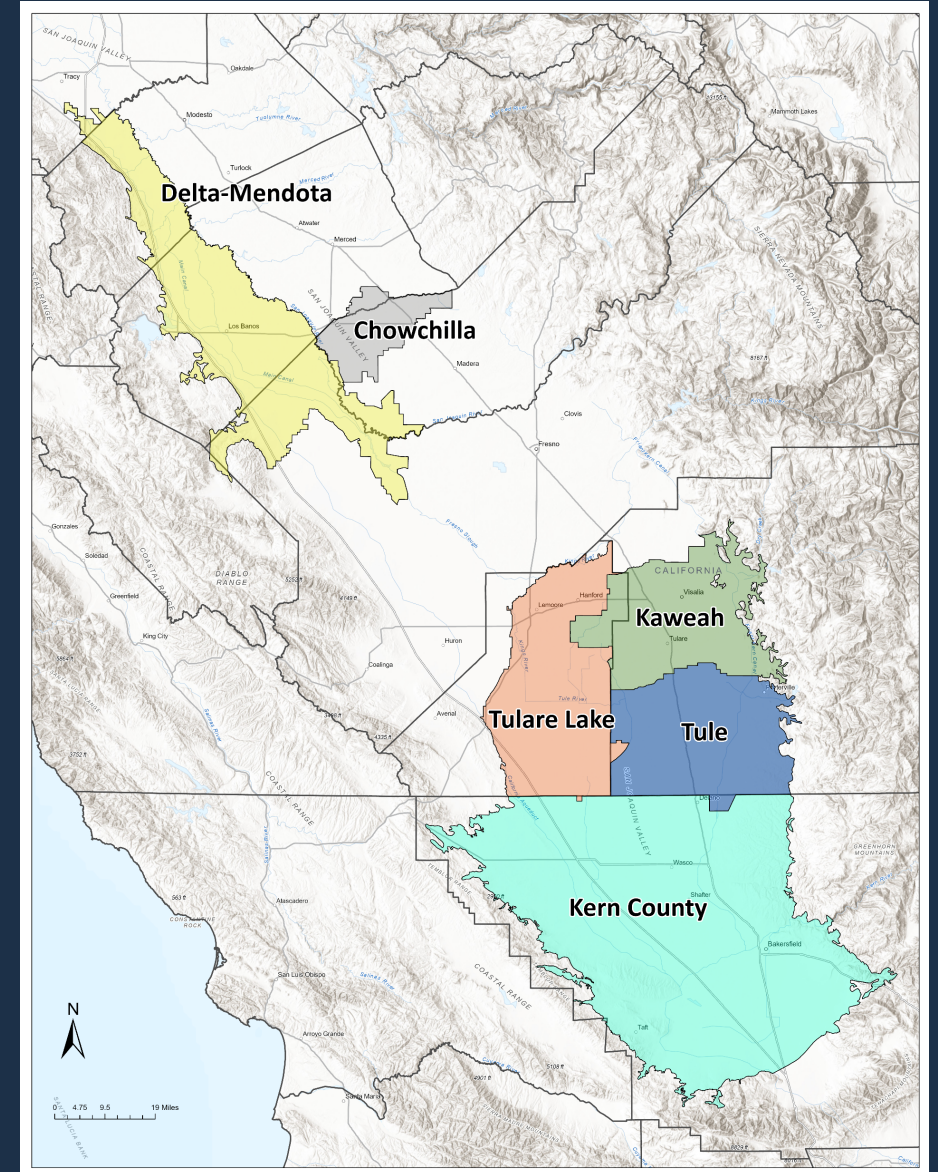
DWR Determinations

Groundwater Sustainability Plans

6
of 20

Basins with Inadequate Plans:

1. Delta-Mendota Subbasin
2. Chowchilla Subbasin
3. Kaweah Subbasin
4. Tulare Lake Subbasin
5. Tule Subbasin
6. Kern County Subbasin



Prioritizing Basins

Issues discussed with the Board on April 4, 2023:

Basin overdraft

Drinking water impacts

Subsidence impacts

Water quality degradation

Implementation & coordination

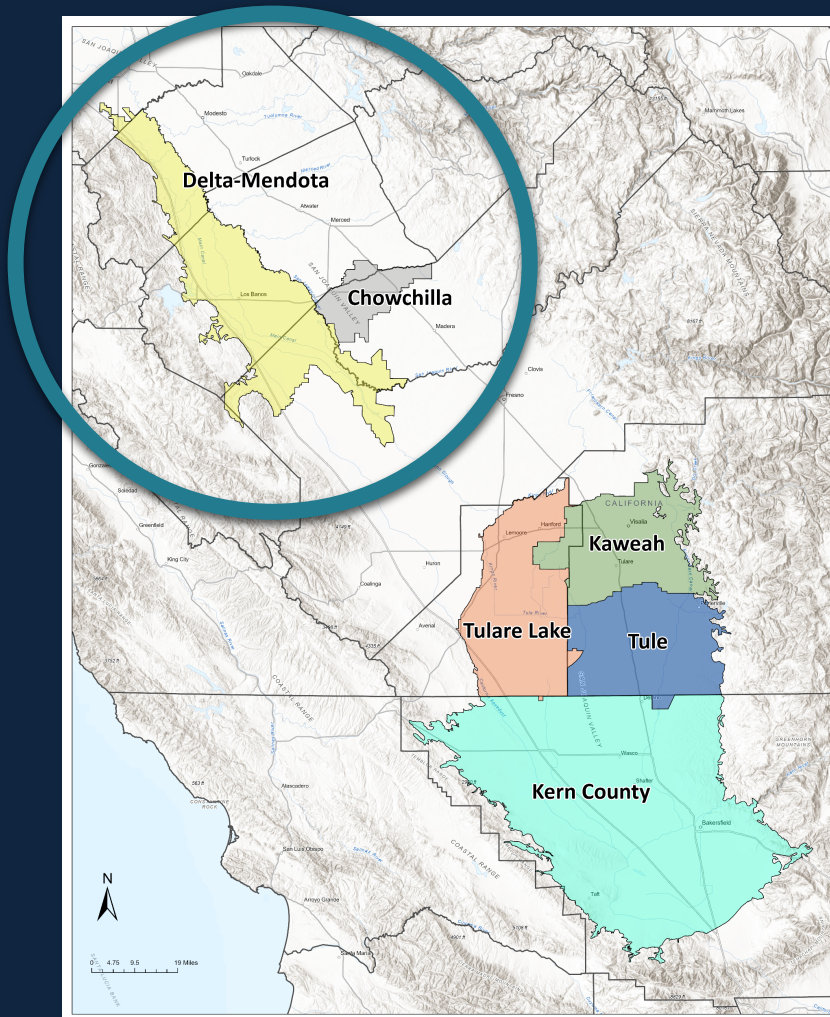
Prioritizing Basins



First Priority

- Imminent impacts to water users & infrastructure
- OR
- Potential for substantial impacts to water users & infrastructure under plan(s) & there is no clear timeline or pathway to address issues

Prioritizing Basins



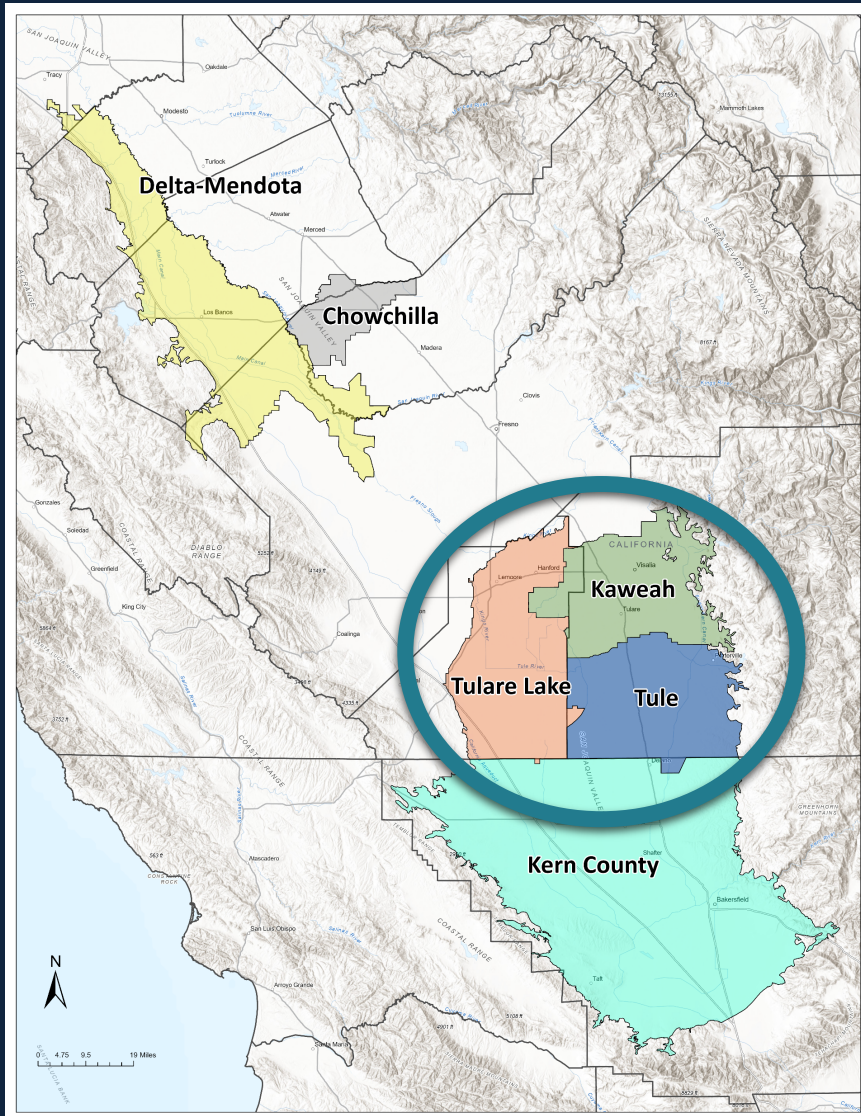
Second Priority

- Impacts to water users and infrastructure less severe
- Deficiencies may be easier to correct

Proposed Schedule For Holding Probationary Hearings

Tulare Lake	Dec 2023
Tule	Jan 2024
Kaweah	Mar 2024
Kern County	Apr 2024
Delta-Mendota	Sep 2024
Chowchilla	Oct 2024

Tulare Lake, Tule, and Kaweah

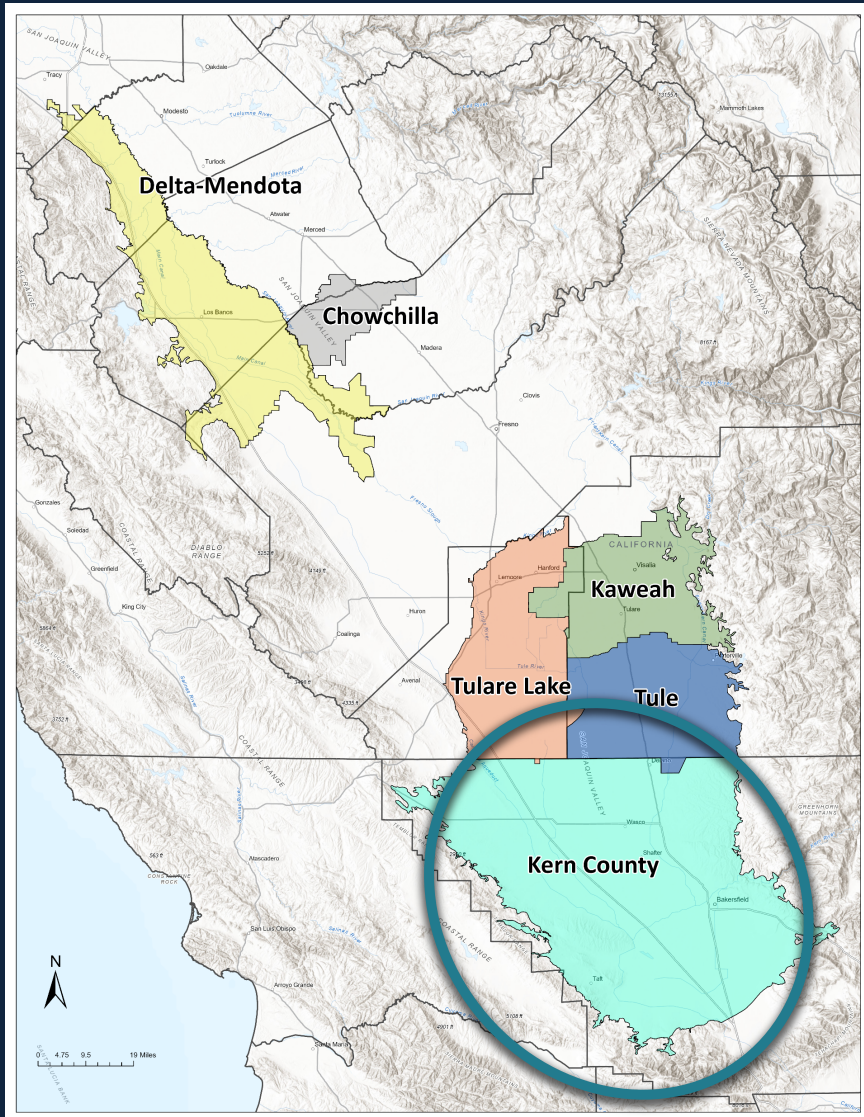


Rationale

Urgent impacts are anticipated:

- Declining water levels → drinking water wells
~2,000 domestic wells at risk of going dry
- Subsidence → infrastructure damage
E.g., CA Aqueduct, Friant Kern Canal, Corcoran levees

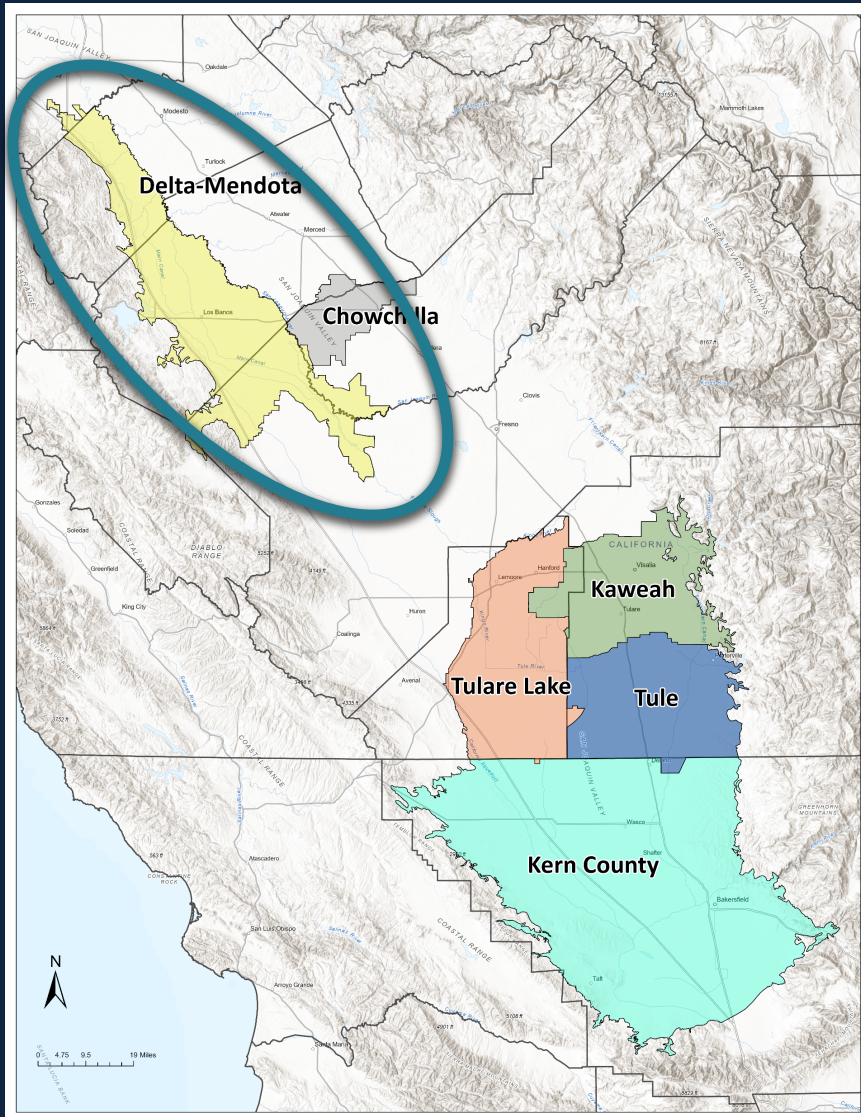
Kern County



Rationale

- Fundamental coordination issues
- Interdependent criteria would allow widespread threshold exceedances before management actions triggered
- Impacts could be extensive, but data gaps make this unclear

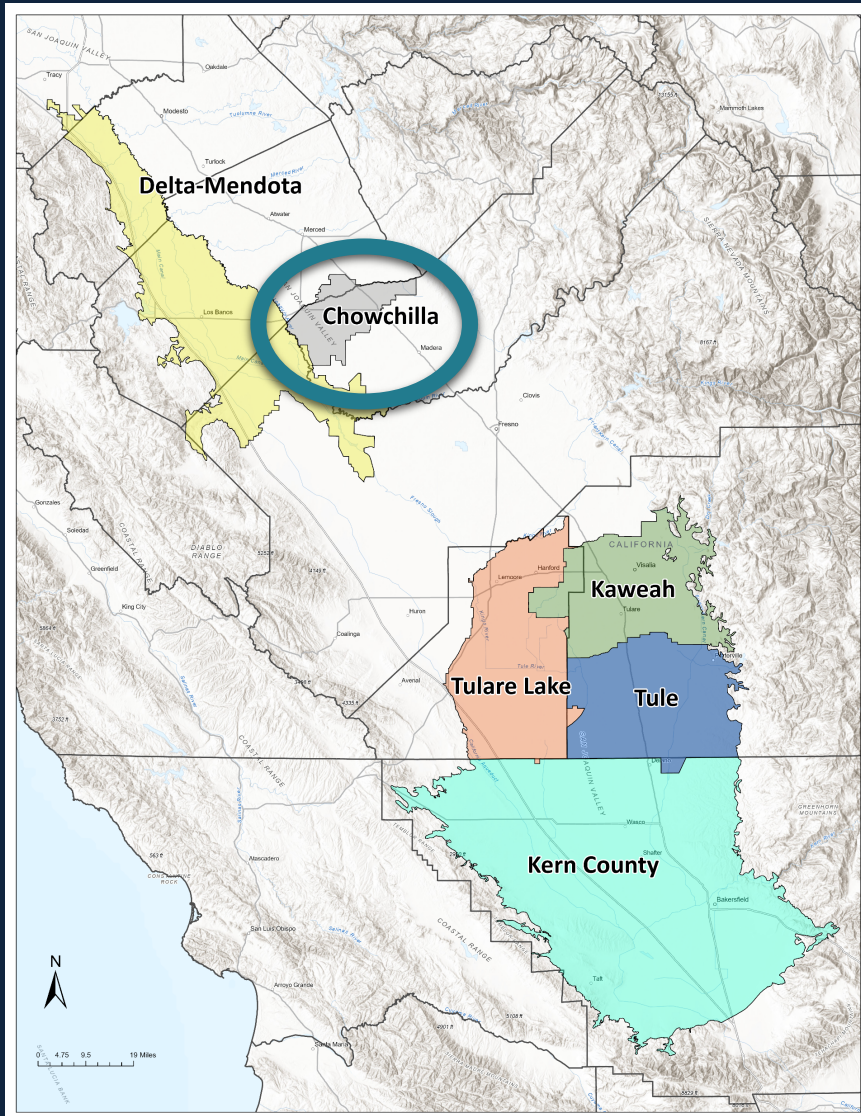
Delta-Mendota



Rationale

- Potential impacts less extensive
- Substantial coordination issues
- New plan to develop a single GSP for the subbasin

Chowchilla



Rationale

- Potential impacts less extensive
- Already submitted a revised plan for staff review
- Plan adoption in progress

STEPS Towards a Hearing

- Required: Minimum 90-day & 60-day notices
- Draft deficiencies identified (staff report)
- Public comment period
- Outreach and public engagement
- Staff evaluation of information received
- Finalize deficiencies and issue draft order

Tulare Lake: Potential Schedule

Early Aug '23



Release draft
deficiencies
Notice to cities
and counties

Aug '23



Notice to all
known
pumpers

Late Aug '23



Stakeholder
meetings

Aug-Oct '23



Public
comment
period

Nov '23



Release final
deficiencies
Issue draft
order

Dec '23



Hearing
Potential
probationary
designation

Tule: Potential Schedule



Sep '23



Release draft
deficiencies
Notice to cities
and counties

Oct '23



Notice to all
known
pumpers

Oct '23



Stakeholder
meetings

Sep-Nov '23



Public
comment
period

Jan '24



Release final
deficiencies
Issue draft
order

Jan '24



Hearing
Potential
probationary
designation

GSA Considerations

- 1 Address plan deficiencies**
Focus on DWR's for now – Board's come later
- 2 Continue implementing plans**
Keep projects on track – unless they cause harm
- 3 Exercise GSA authorities as needed**
State intervention doesn't change GSA authorities

STEPS to Exit State Intervention

- **GSA(s) revise plan** – Address DWR deficiencies (Board's deficiencies if on probation)
- **Technical meeting(s)** – GSAs explain to Board staff how deficiencies are addressed
- **Board staff review** – Time estimate available once the plan(s) are received
- **Board-DWR coordination**
- **Board decides** – Are deficiencies addressed?

BOARD RESOURCES

- FAQs for GSAs
- FAQs for Pumpers
- GSA Look-Up Map tool
- Water Quality Map tool

The collage features three overlapping digital resources:

- Basin and Groundwater Sustainability Act**: A map interface with a search bar and a "Welcome!" message. The map shows various basins in California, including the Feather River Basin.
- SGMA Groundwater Quality Visualization Tool**: A data visualization tool from the California Water Boards. It displays "Wells Data with Detections greater than the Comparable Concentration Value" and "Impacted Well Locations". It includes tabs for "Well Count", "Percentages", and "Table". A "Reset" button is visible.
- Sustainable Groundwater Management Act Frequently Asked Questions**: A document with the California Water Boards logo. The title is "Sustainable Groundwater Management Act Frequently Asked Questions". The main heading is "Groundwater, the Sustainable Groundwater Management Act, and State Intervention". The document includes a section titled "What is groundwater?" and a table showing "Percentage Impacted Wells" as 32.11.

State Water Resources Control Board SGMA Program

SGMA@waterboards.ca.gov
www.waterboards.ca.gov/sgma

