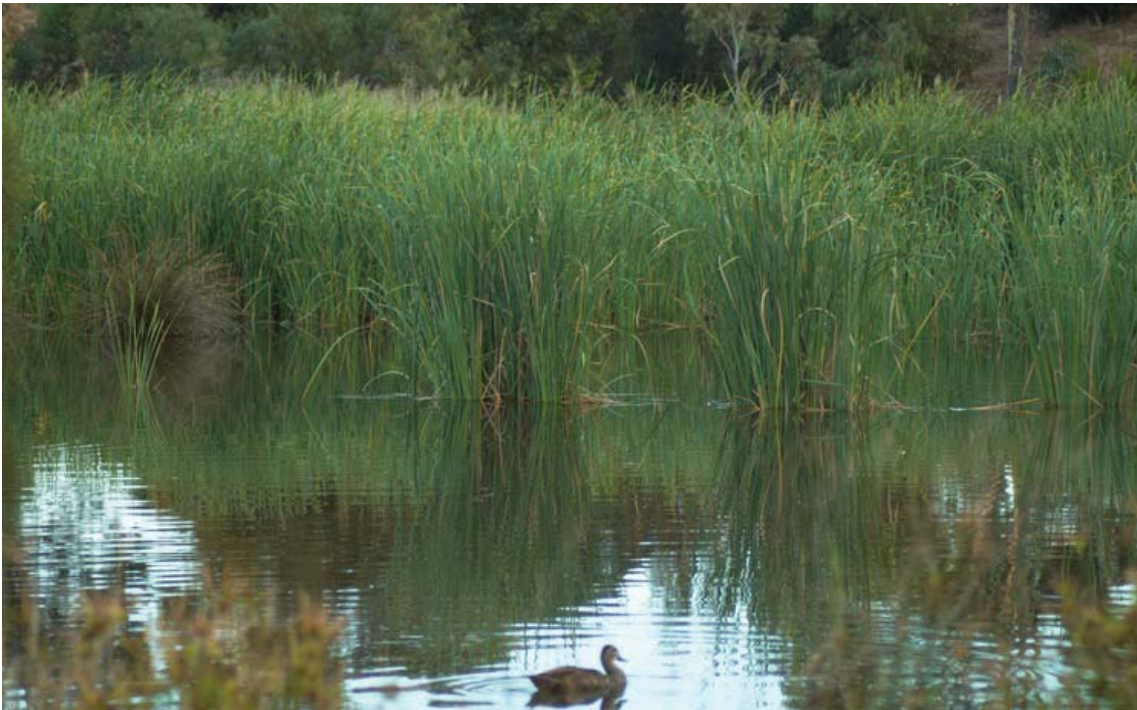


CWA Section 401 Water Quality Certification Program

Division of Water Quality

Annual Report 2005





√ Impacts Summary by Region

√ Annual Trends

√ Discharges by Project Type

The State Water Board Certification and Wetlands Program Annual Report contains summary information for permanent and temporary impacts for five waterbody types, including wetland, streambed, lake, ocean, and riparian. Please direct any questions regarding this report to Catherine Woody at CWoody@waterboards.ca.gov.

Table 1 - Impacts Summary by Region*
2005

Region	Number Of Projects	Permanent Dredge Impacts	Permanent Fill Impacts					Total Permanent Acres	Compensatory Mitigation for All Types	
		Thousands of Cubic Yards	Wetland Acres	Riparian Acres	Streambed Acres	Lake Acres	Ocean Acres		Compensatory Mitigation	Compensation Mitigation Ratio
1	81	25	13.77	0.01	2.17	0.00	0.08	16.03	48.60	3.03
2	200	1,790	30.69	0.33	5.71	0.72	0.82	38.27	285.45	7.46
3	80	620	3.10	1.49	2.85	0.00	0.05	7.49	19.78	2.64
4	153	0	2.50	2.23	58.60	4.00	1.15	68.47	201.36	2.94
5F	31	0	9.99	1.40	3.76	0.08	0.00	15.23	9.11	0.60
5R	83	1	12.95	8.32	6.50	0.52	0.00	28.28	28.92	1.02
5S	235	852	122.74	8.62	19.62	1.28	0.00	152.25	183.43	1.20
6T	21	2	0.15	0.04	1.75	0.20	0.00	2.15	0.10	0.04
6V	16	0	38.30	2.31	13.90	0.00	0.00	54.51	144.39	2.65
7	22	0	2.64	0.11	110.55	0.00	0.00	113.30	277.48	2.45
8	170	222	14.22	3.21	49.50	4.15	0.38	71.46	177.71	2.49
9	102	0	9.65	2.18	15.04	0.00	5.94	32.81	50.15	1.53
SB	3	0	0.00	0.00	0.00	0.00	0.00	0.00	0.00	0.00
Total	1,197	3,513	260.70	30.25	289.95	10.95	8.42	600.25	1,426.47	2.38

* Does not include restoration projects. See Table 3 for restoration impacts.

Table 2 - Annual Trends*
2003 - 2005

Region	2005			2004			2003		
	Number Of Projects	Total Permanent Dredge (Thousands of Cubic Yards)	Total Permanent Fill (Acres)	Number Of Projects	Total Permanent Dredge (Thousands of Cubic Yards)	Total Permanent Fill (Acres)	Number Of Projects	Total Permanent Dredge (Thousands of Cubic Yards)	Total Permanent Fill (Acres)
1	81	25.00	16.03	103	136.65	13.86	78	0.00	6.36
2	200	1,789.90	38.27	219	665.13	34.91	208	4,956.72	57.86
3	80	620.00	7.49	115	360.00	75.52	106	0.00	133.93
4	153	0.00	68.47	121	215.68	46.15	106	321.00	36.26
5F	31	0.00	15.23	31	0.00	2.97	19	0.01	4.04
5R	83	1.00	28.28	73	0.00	16.62	48	0.00	57.02
5S	235	852.35	152.25	317	29.00	159.72	252	980.00	168.75
6T	21	2.40	2.15	26	0.00	9.47	27	0.63	0.26
6V	16	0.00	54.51	15	0.00	2.00	5	0.00	4.03
7	22	0.00	113.31	18	1,250.00	60.60	25	5.07	38.50
8	170	222.03	71.46	96	0.00	63.82	60	982.00	27.00
9	102	0.00	32.81	104	55.00	15.06	94	0.00	23.88
SB	3	0.00	0.00	6	0.00	0.00	6	0.00	0.00
Total	1,197	3,512.68	600.25	1,244	2,711.46	500.70	1,034	7,245.44	557.87

* Does not include restoration projects. See Table 3 for restoration impacts.

**Table 3 - Discharges by Project Type
2005**

Project Purpose	No. of Projects	Dredge Volume (Thousands of Cubic Yards)*	Permanent Fill Acres*	Temporary Fill Acres*	Percent of Fill Acres
Agricultural (AG)	9	6.00	21.25	0.06	1%
Beach Enrichment (BEACH)	5	0.00	2.09	0.50	0%
Boating Navigation (BOAT)	78	2,706.08	13.47	9.16	0%
Channel Flood Control (CHFC)	110	291.59	45.77	558.80	2%
Channel Stabilization (CHSTBL)	209	359.30	50.34	57.61	2%
Construction (CONST)	11	0.00	1.15	1.23	0%
Dam Construction Repair (DAMS)	16	0.00	4.19	1.14	0%
Data Collection (DATA)	18	0.00	1.43	7.60	0%
Diversion Structures (DIV)	2	0.00	0.00	0.39	0%
Golf Course (GOLF)	12	0.00	106.82	0.10	4%
Hydroelectric Facility (HYDRO)	1	0.00	0.29	0.00	0%
Gravel Extraction Mining (MINE)	8	0.00	2.53	6.00	0%
Mitigation Activities (MITI)	15	0.00	8.18	141.15	0%
Discharges Not Otherwise Categorized	26	204.00	19.05	15.97	1%
Outfall Structure (OUTF)	74	0.00	7.87	3.66	0%
Recreational Facilities (RECR)	40	0.00	27.64	5.94	1%
Restoration Activities (REST)**	68	0.00	2,301.16	854.40	75%
Transportation - Aeronautics (TRAER)	6	0.00	12.76	18.48	0%
Transportation - Bridges Crossings (TRBR)	149	190.00	76.80	49.69	3%
Transportation - Roads Highways (TRRD)	236	0.00	69.32	64.73	2%
Transportation - Railroads (TRRR)	23	0.00	15.02	16.54	0%
Unknown (UNK)	40	0.00	25.90	2.43	1%
Urban Development (URBA)	288	0.00	170.89	46.07	6%
Utilities (UTIL)	125	70.00	66.08	40.85	2%

*Dredge and fill acre totals may exceed that shown in Table 1 because some projects may have more than one purpose. (Except for REST; see following note.)

**Restoration Activities includes only those projects whose primary purpose is to restore or enhance beneficial uses fo water.