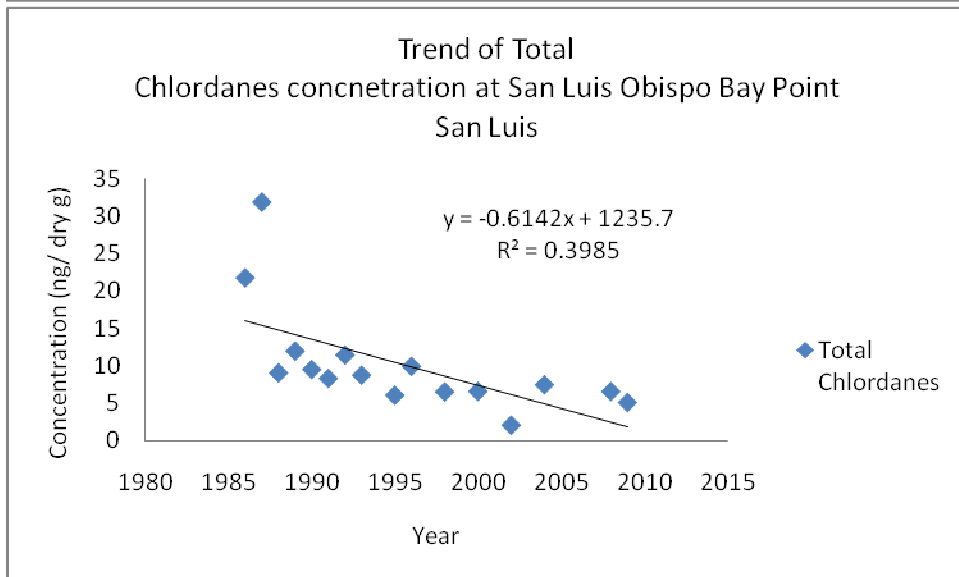
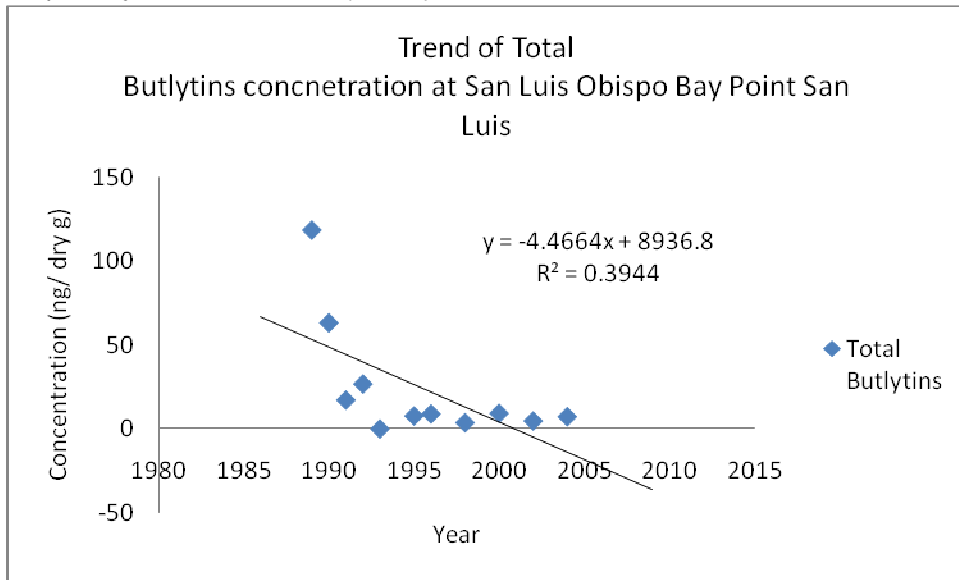
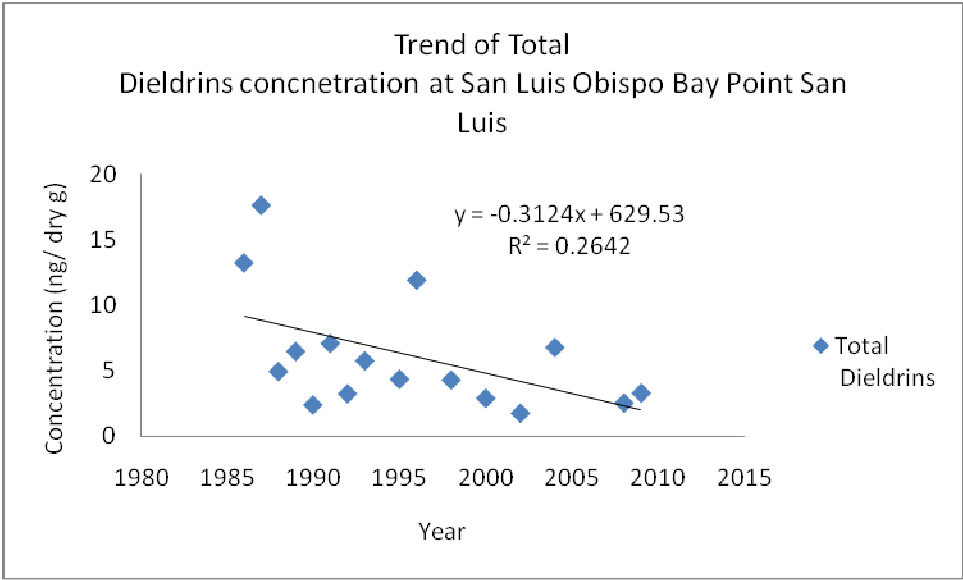
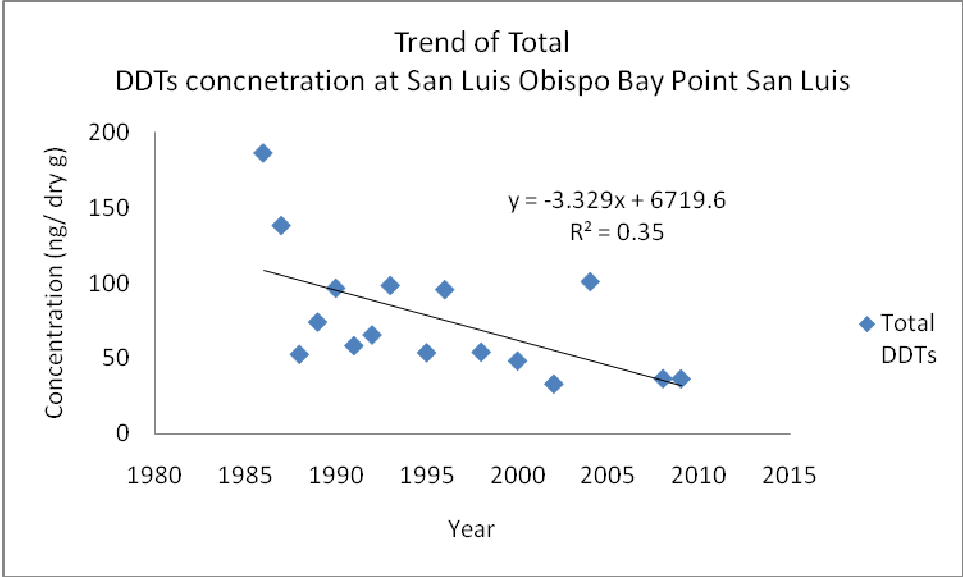


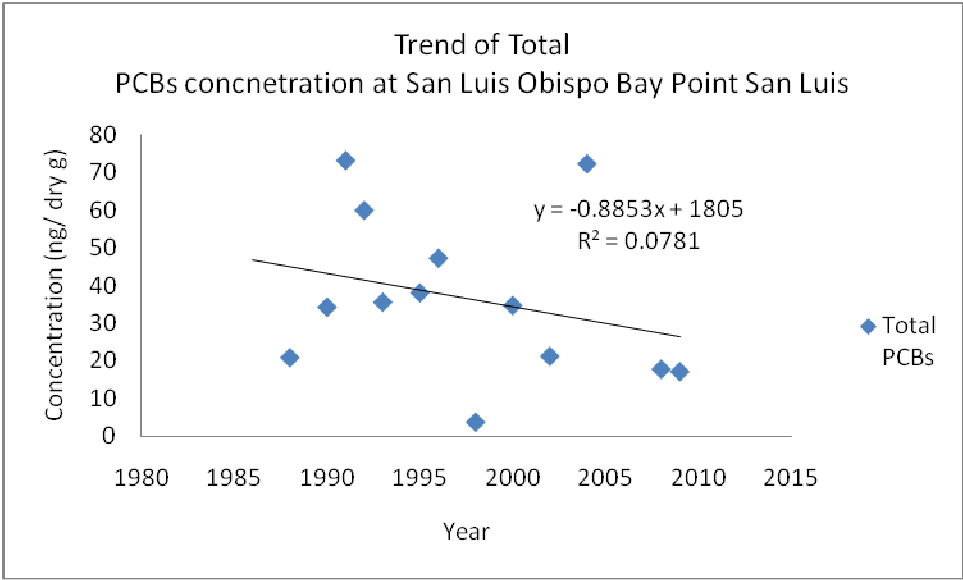
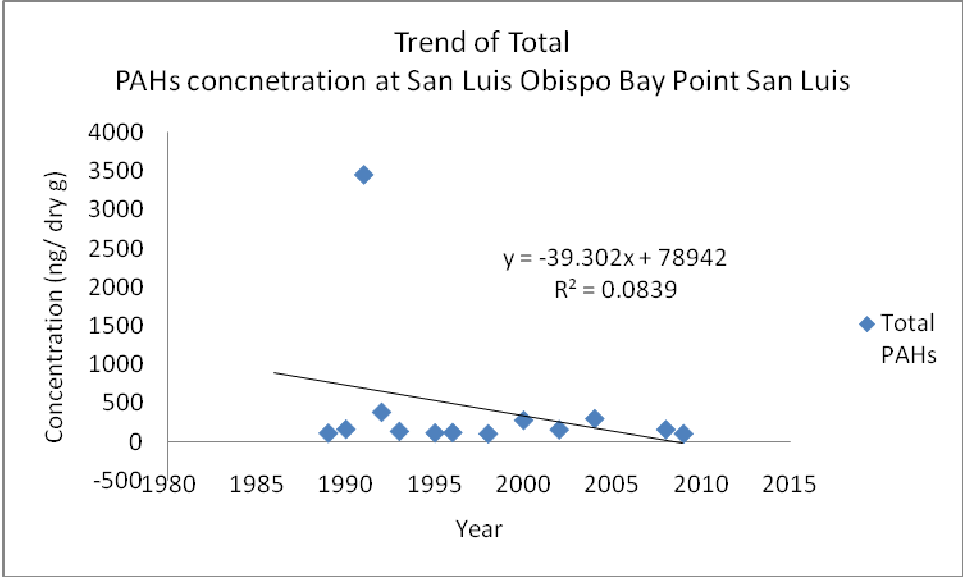
Summary for San Luis Obispo Bay Point San Luis (SLSL)

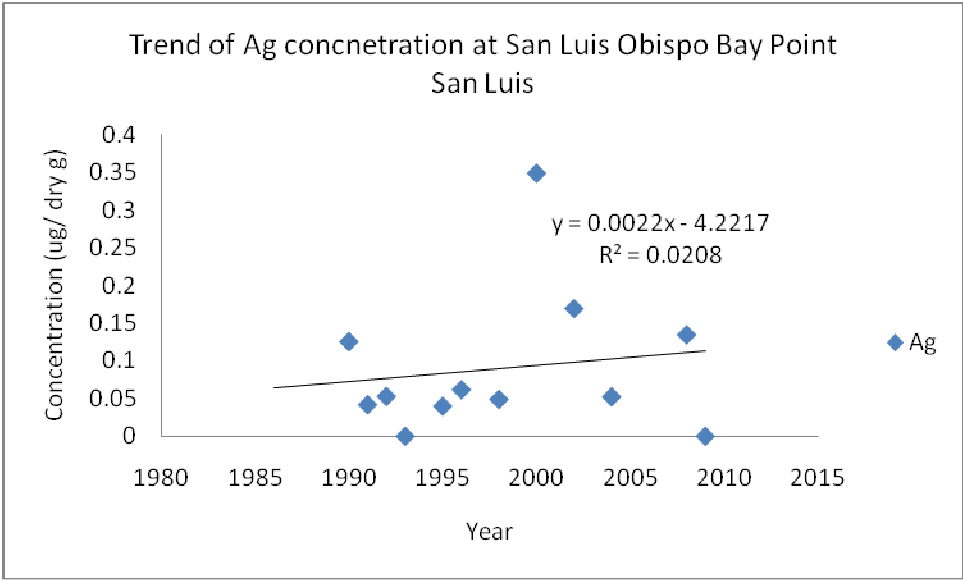
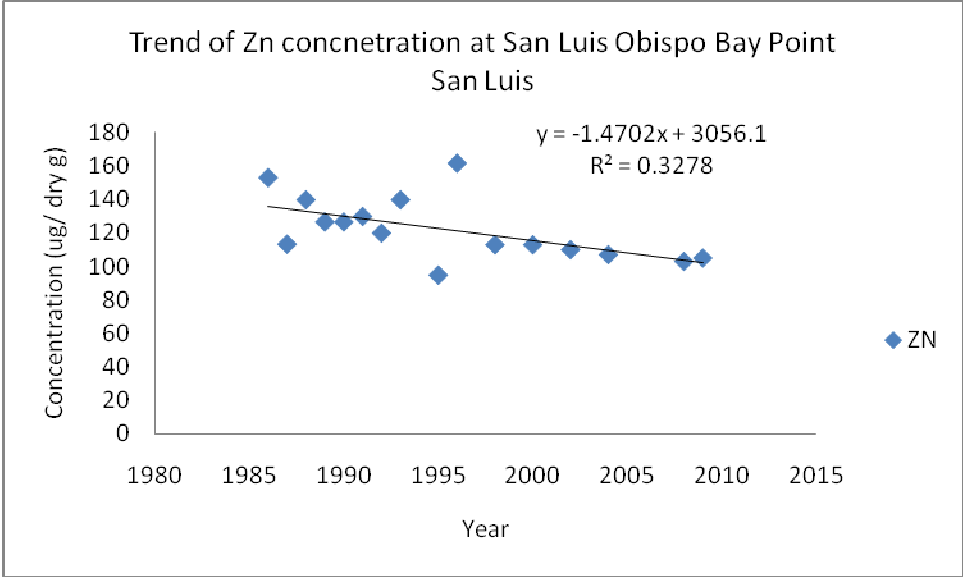
The following graphs show trends at San Luis Obispo Bay Point San Luis from years 1986-2009 for the following constituents: Butyltin, Chlordane, Total DDT, Dieldrin, Total PAH, PCBs, Zinc (Zn), Silver (Ag), Aluminum (Al), Arsenic (As), Cadmium (Cd), Chromium (Cr), Copper (Cu), Iron (Fe), Mercury (Hg), Manganese (Mn), Nickel (Ni), Lead (Pb), Selenium (Se), Antimony (Sb), Silicon (Si) and Tin (Sn).

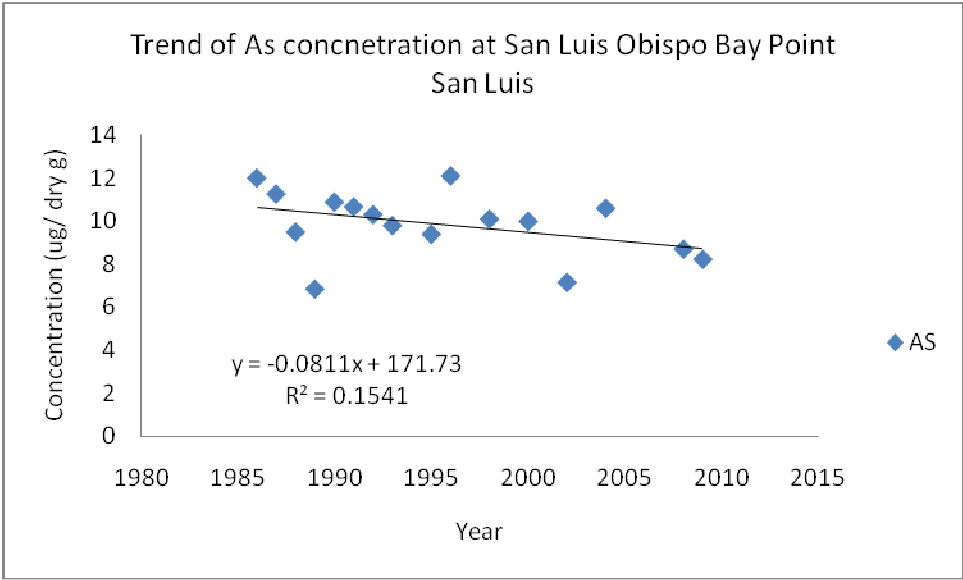
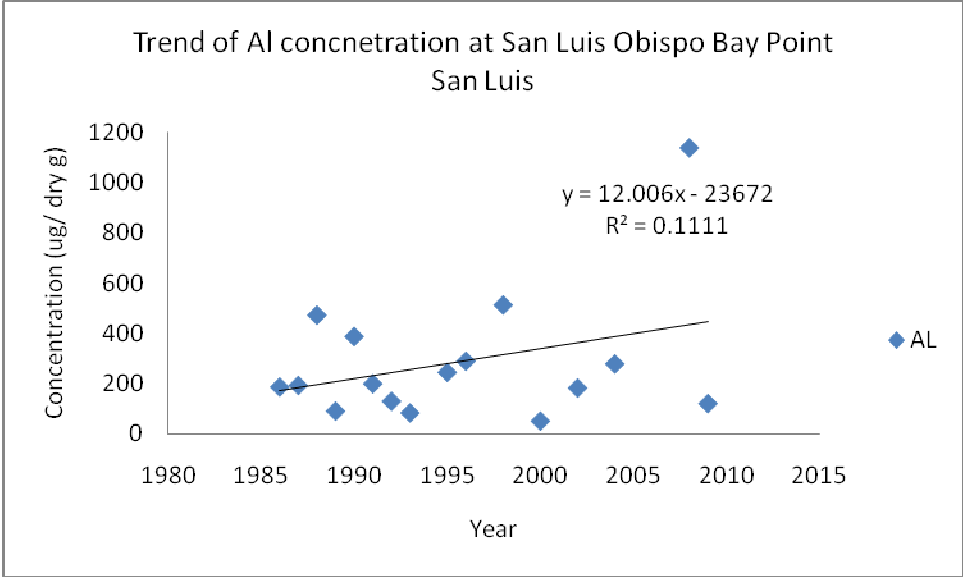
San Luis Obispo Bay Point San Luis (SLSL)

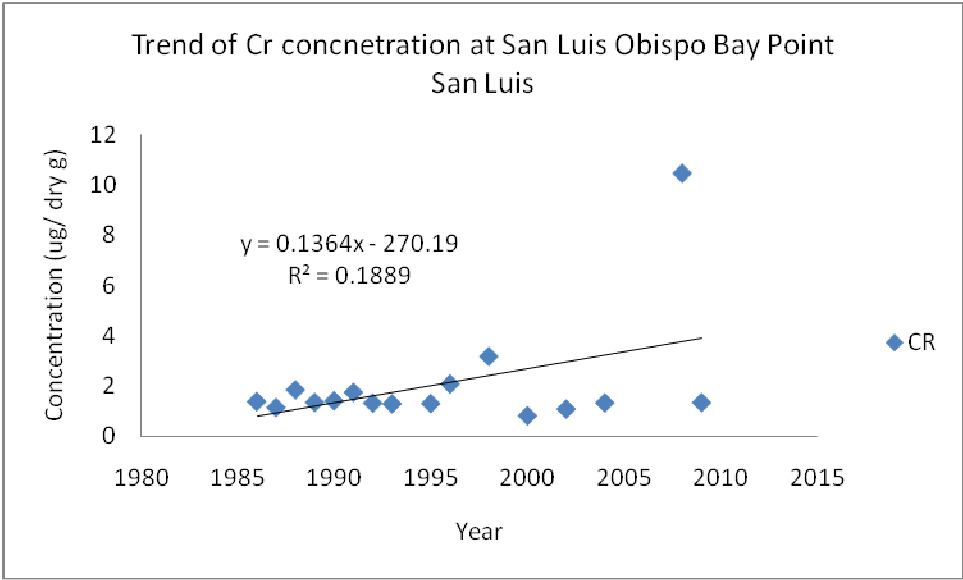
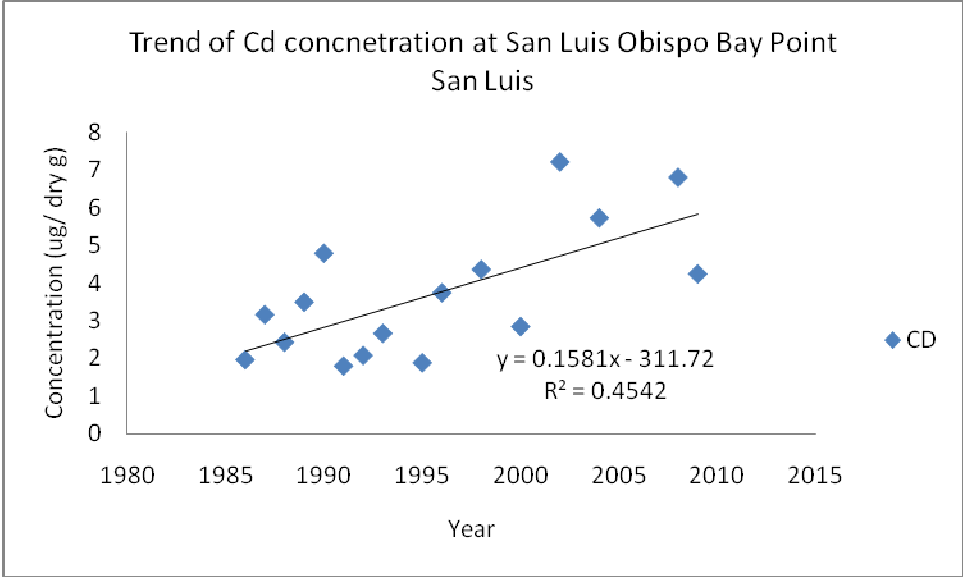




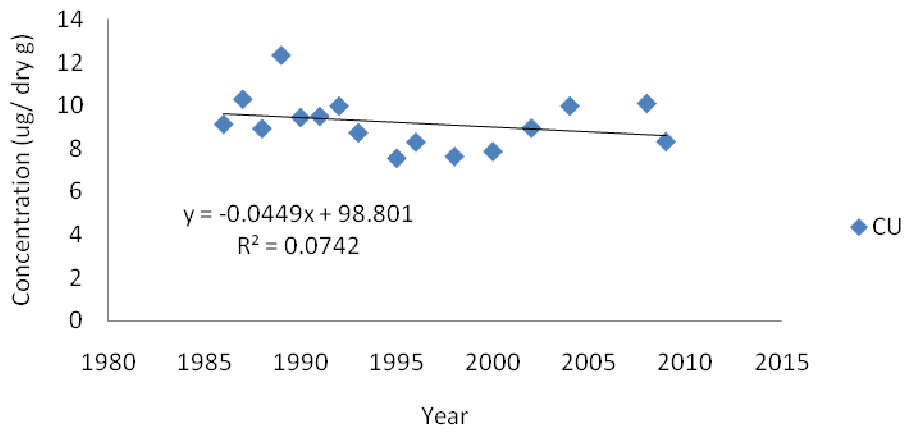




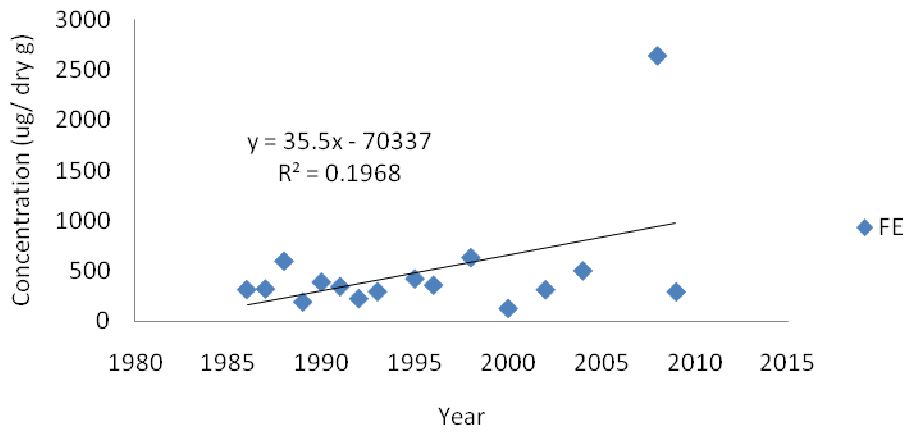


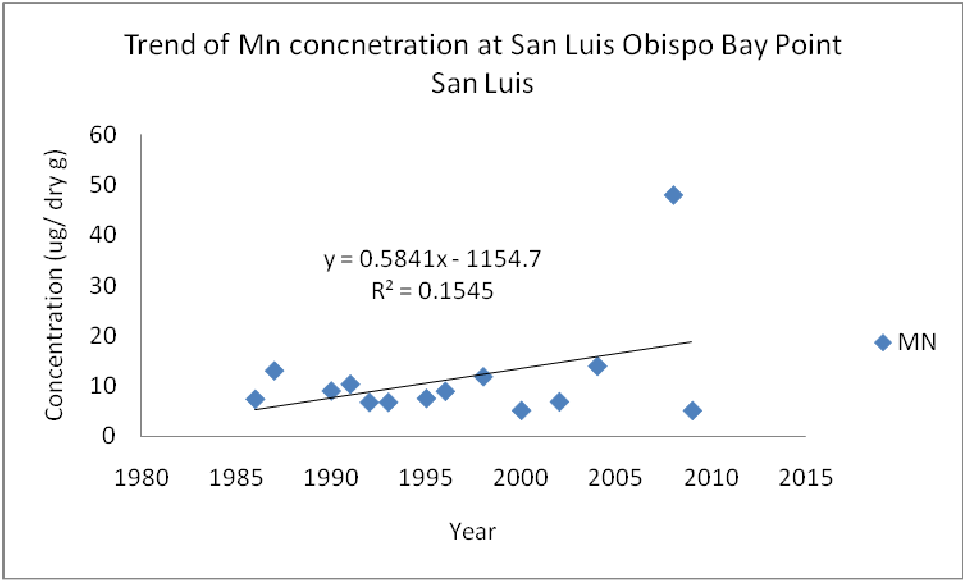
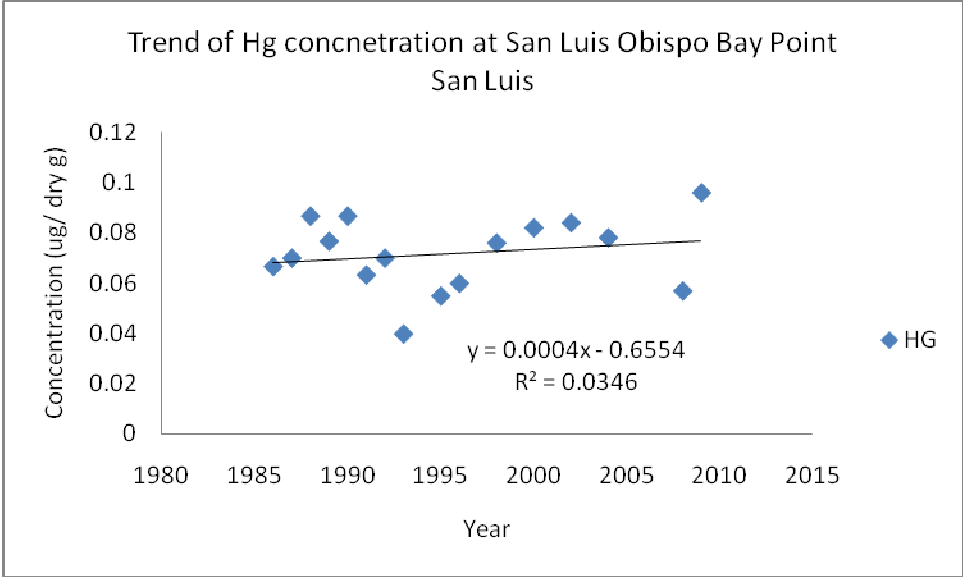


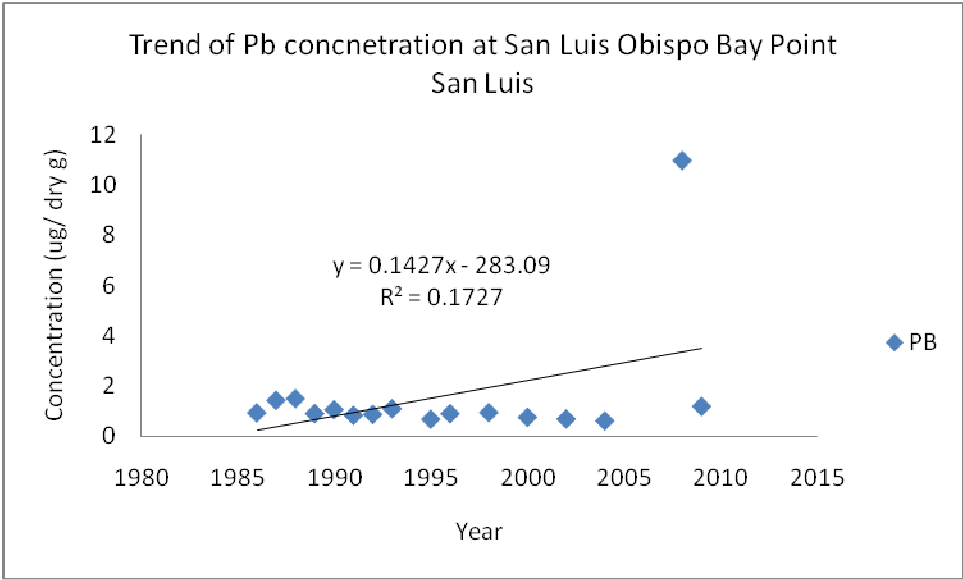
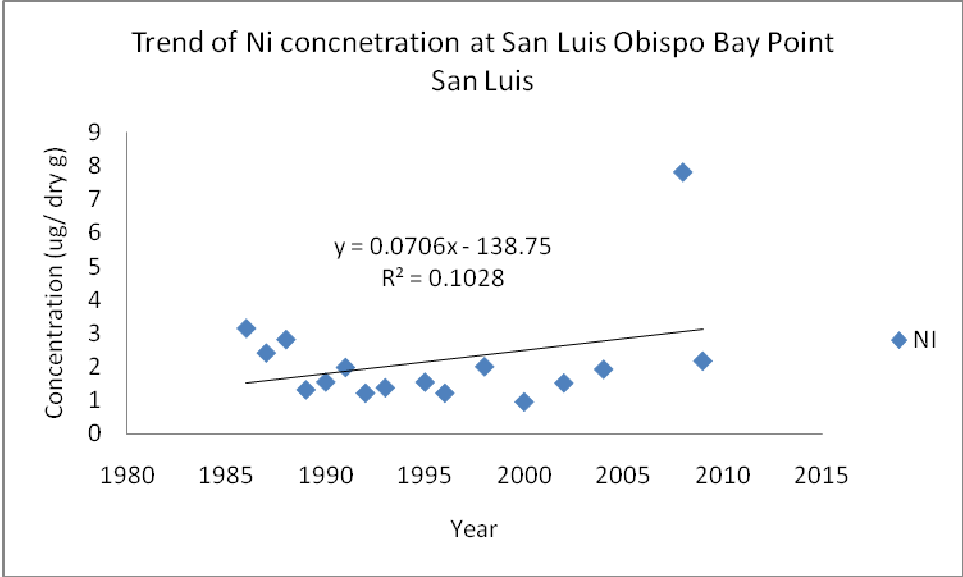
Trend of Cu concnetration at San Luis Obispo Bay Point
San Luis



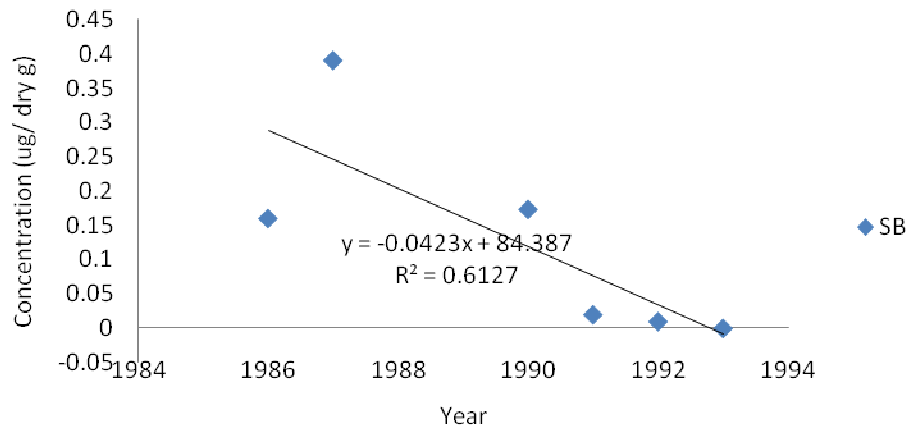
Trend of Fe concnetration at San Luis Obispo Bay Point
San Luis



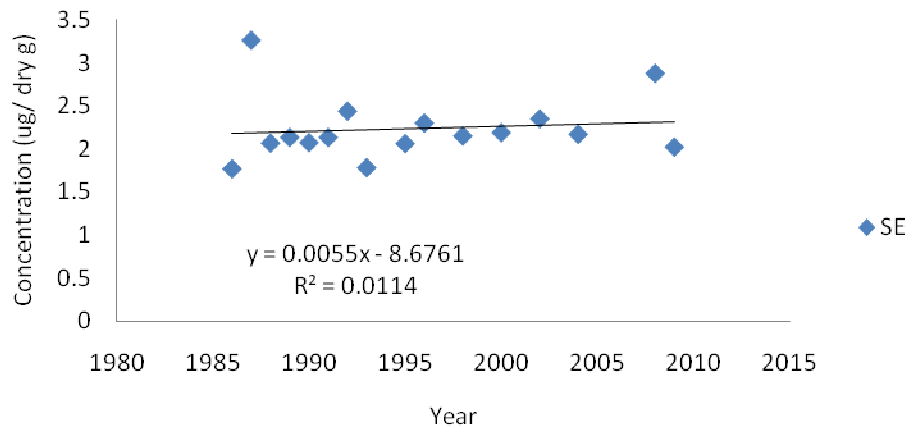




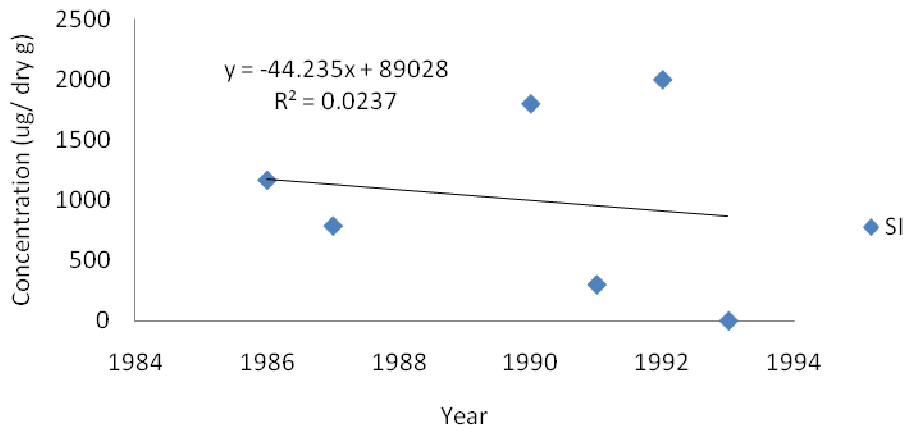
Trend of Sb concentration at San Luis Obispo Bay Point
San Luis



Trend of Se concentration at San Luis Obispo Bay Point
San Luis



Trend of Si concentration at San Luis Obispo Bay Point San Luis



Trend of Sn concentration at San Luis Obispo Bay Point San Luis

