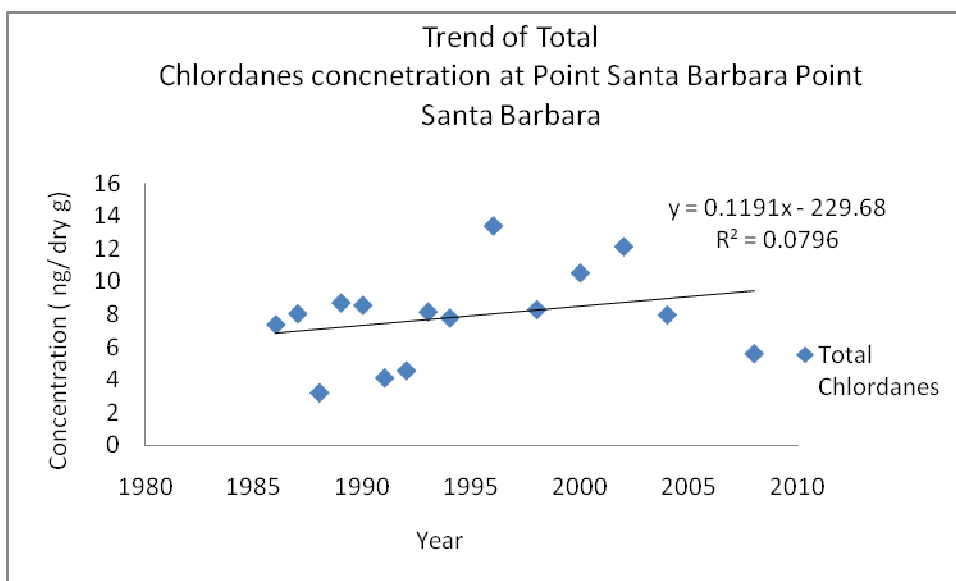
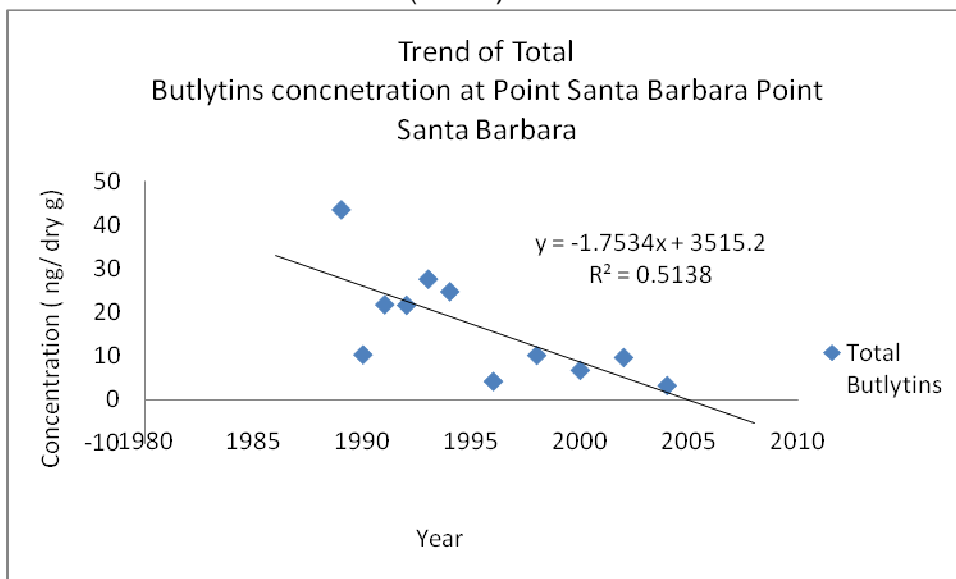
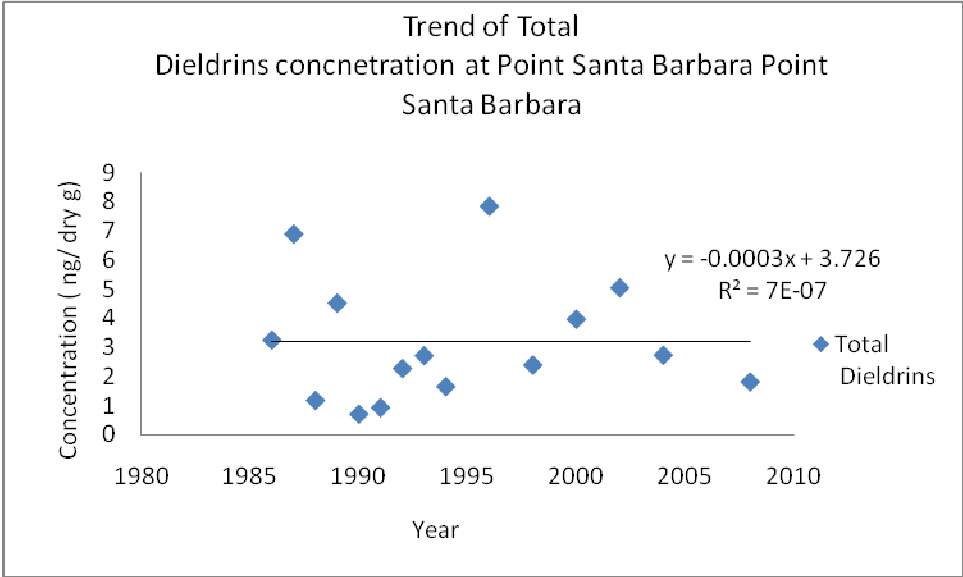
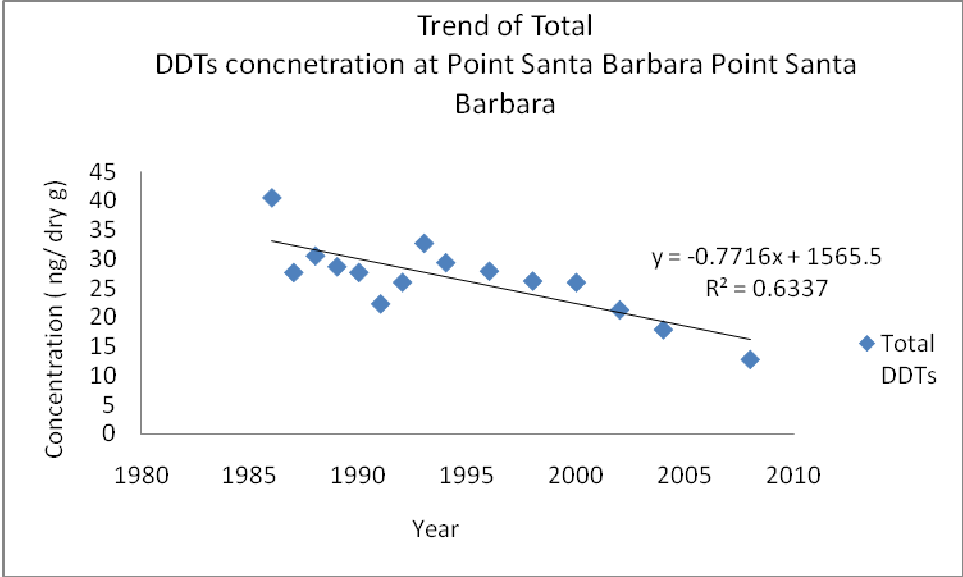


Summary Point Santa Barbara Point Santa Barbara (SBSB)

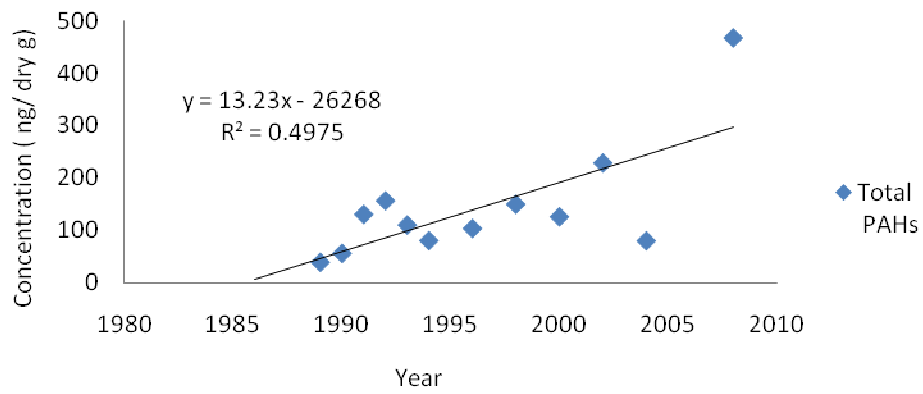
The following graphs show trends at Point Santa Barbara Point Santa Barbara from years 1986-2009 for the following constituents: Butyltin, Chlordane, Total DDT, Dieldrin, Total PAH, PCBs, Zinc (Zn), Silver (Ag), Aluminum (Al), Arsenic (As), Cadmium (Cd) , Chromium (Cr), Copper (Cu), Iron (Fe), Mercury (Hg), Manganese (Mn), Nickel (Ni), Lead (Pb), Selenium (Se), Antimony (Sb), Silicon (Si) and Tin (Sn).

Point Santa Barbara Point Santa Barbara (SBSB)

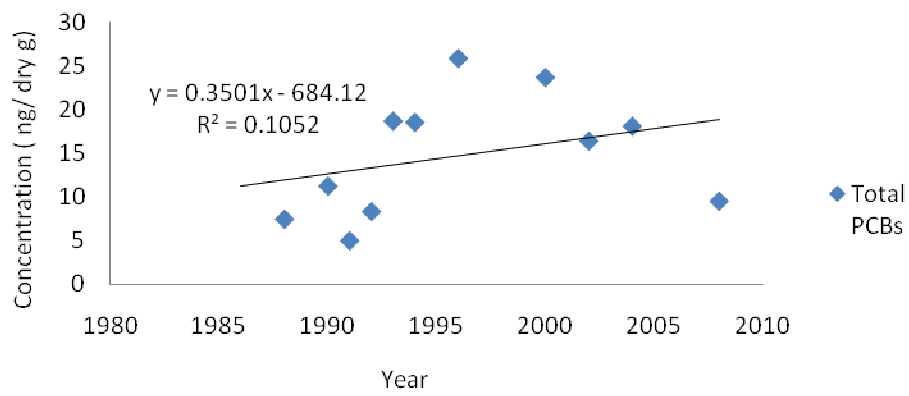




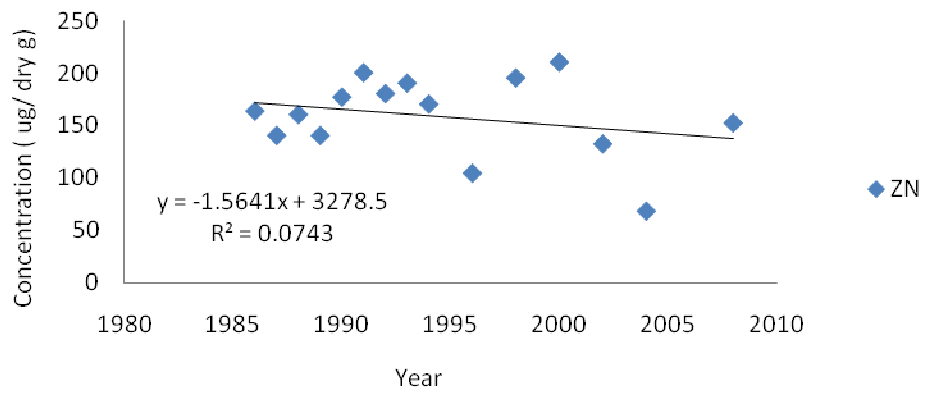
Trend of Total PAHs concentration at Point Santa Barbara Point Santa Barbara



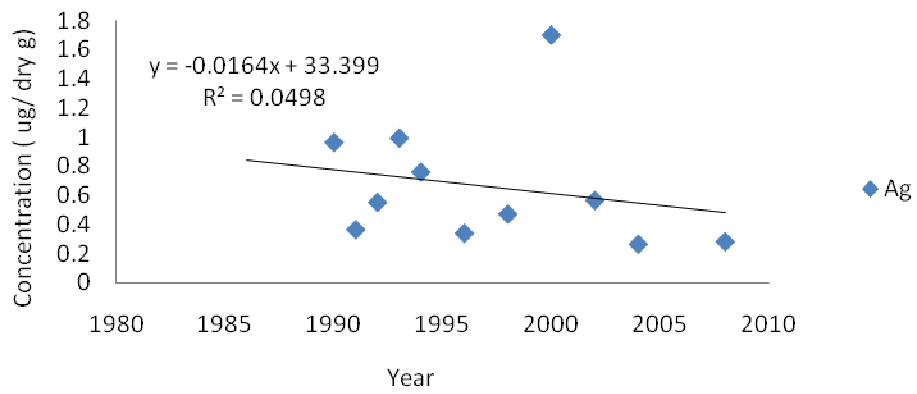
Trend of Total PCBs concentration at Point Santa Barbara Point Santa Barbara



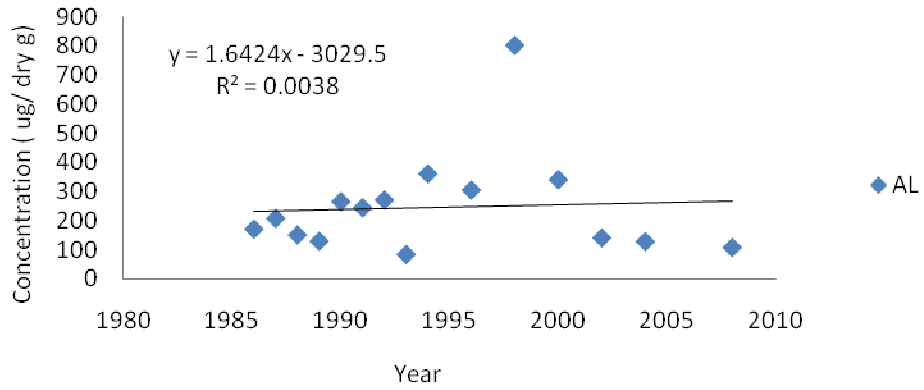
Trend of Zn concentration at Point Santa Barbara Point
Santa Barbara



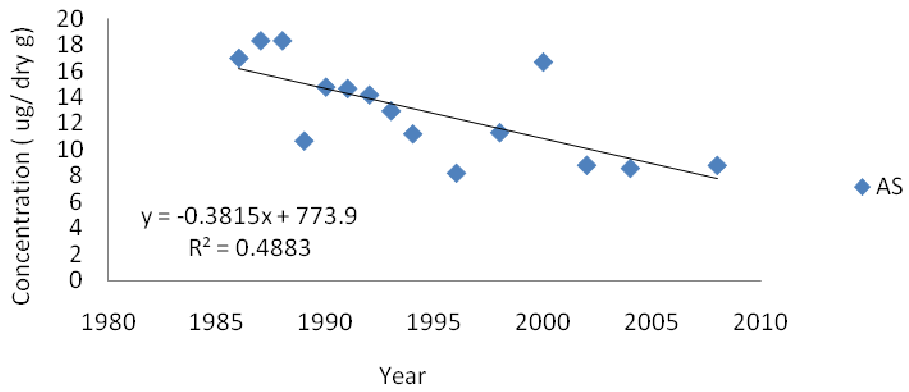
Trend of Ag concentration at Point Santa Barbara Point
Santa Barbara

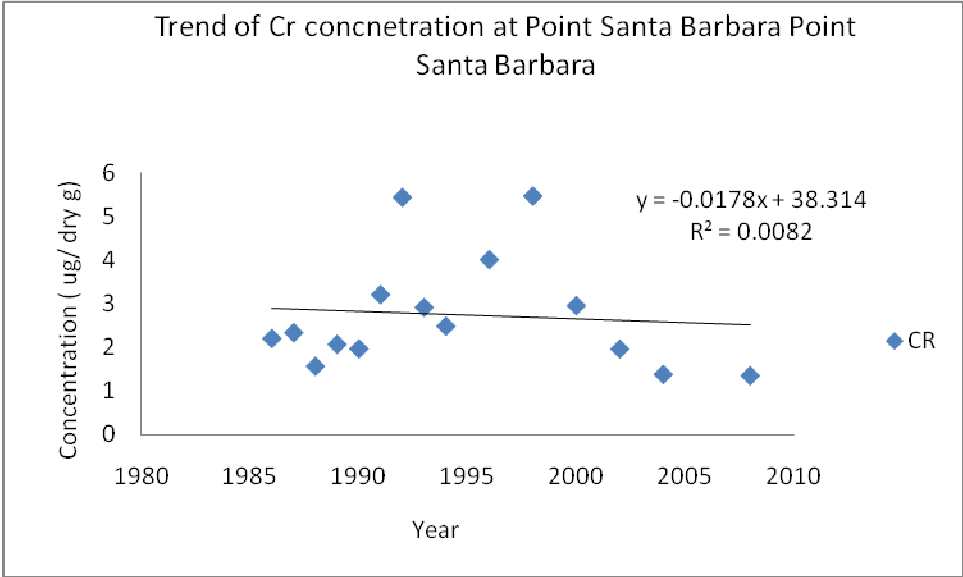
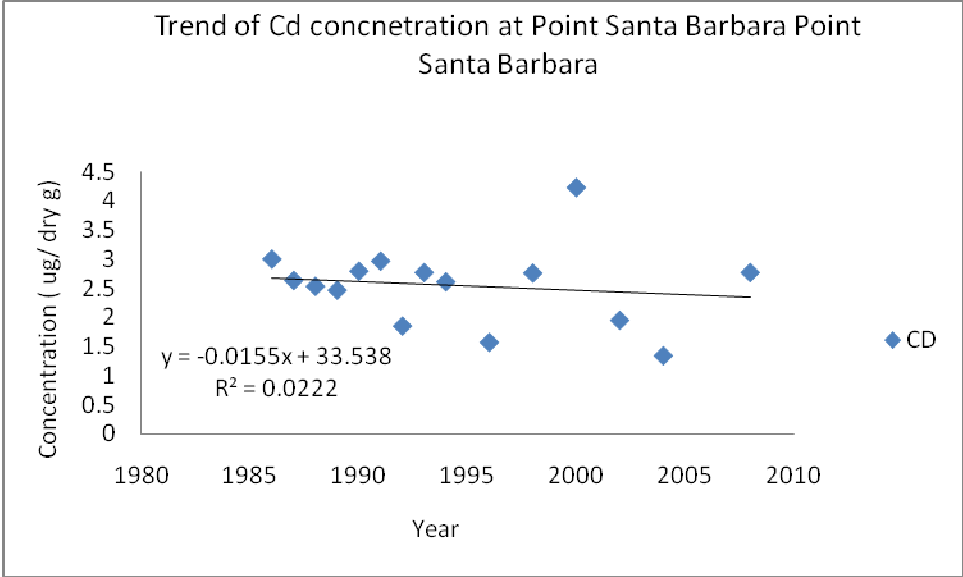


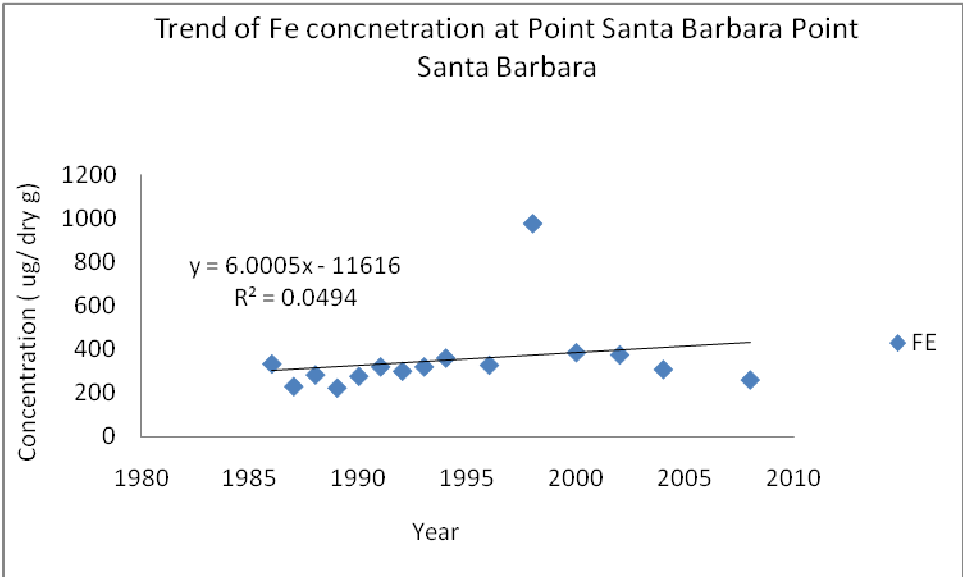
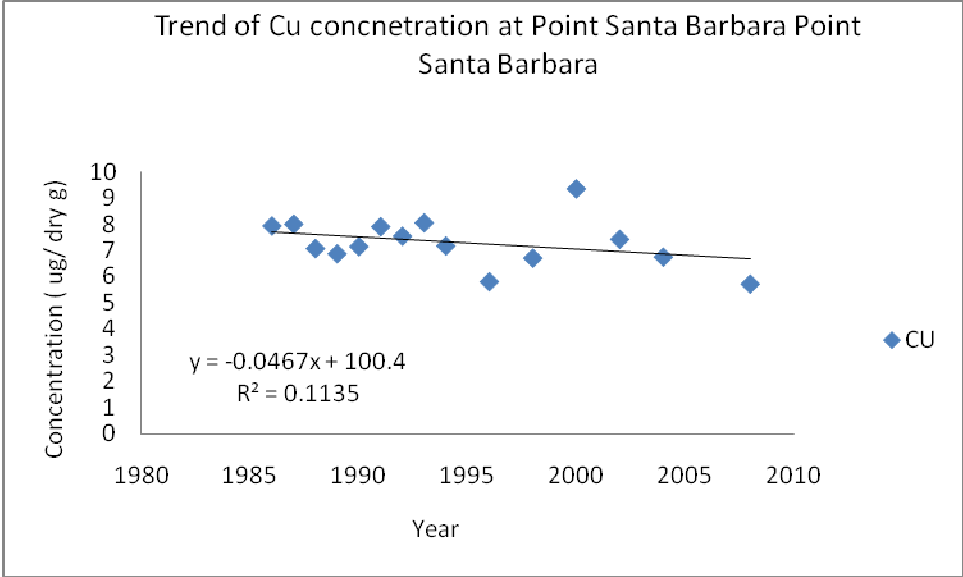
Trend of Al concentration at Point Santa Barbara Point
Santa Barbara

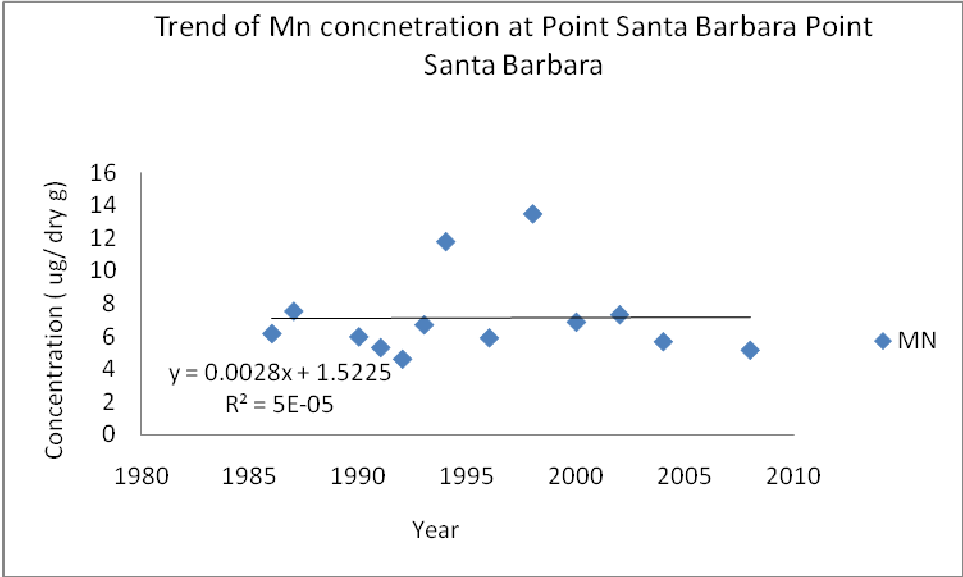
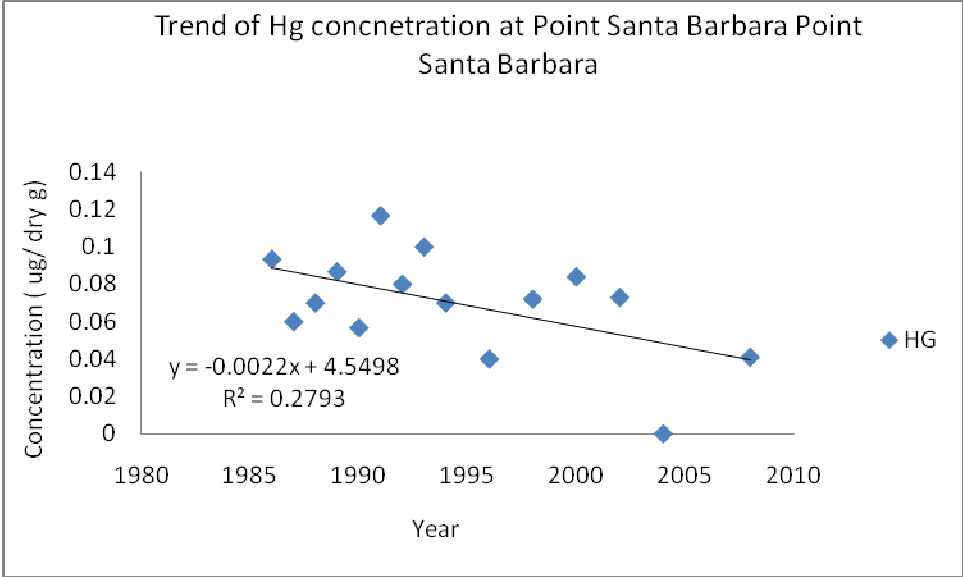


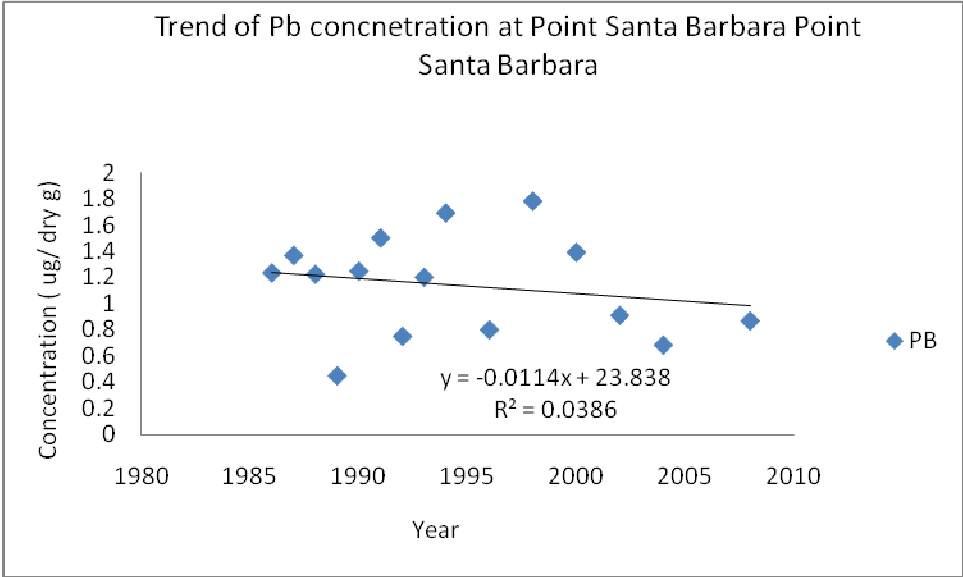
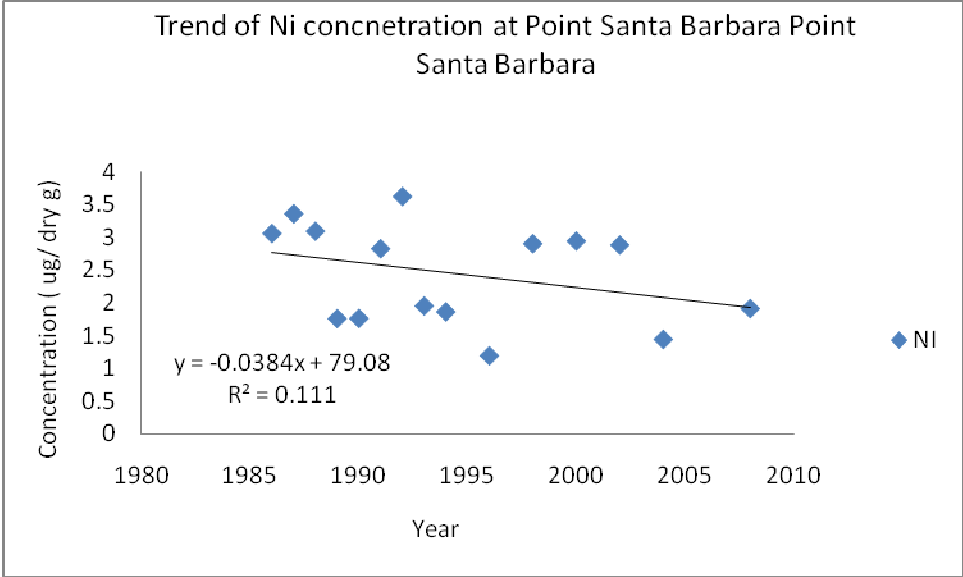
Trend of As concentration at Point Santa Barbara Point
Santa Barbara



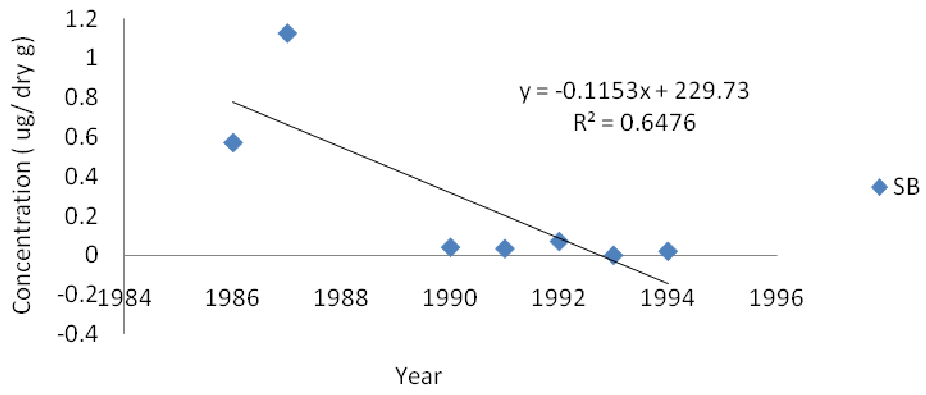




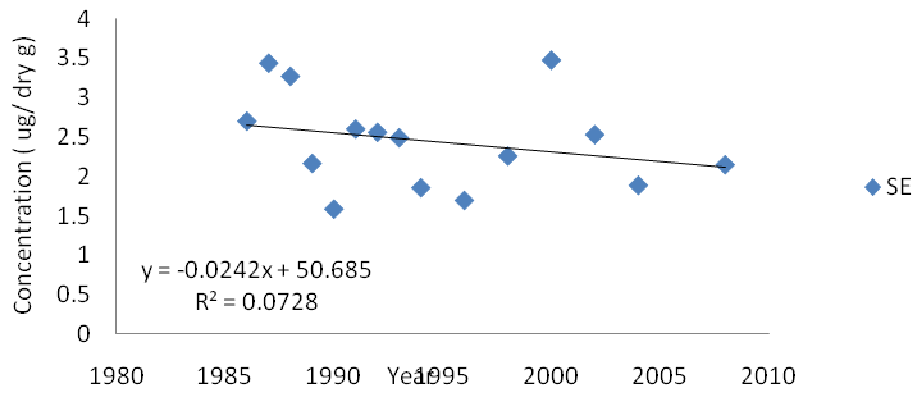




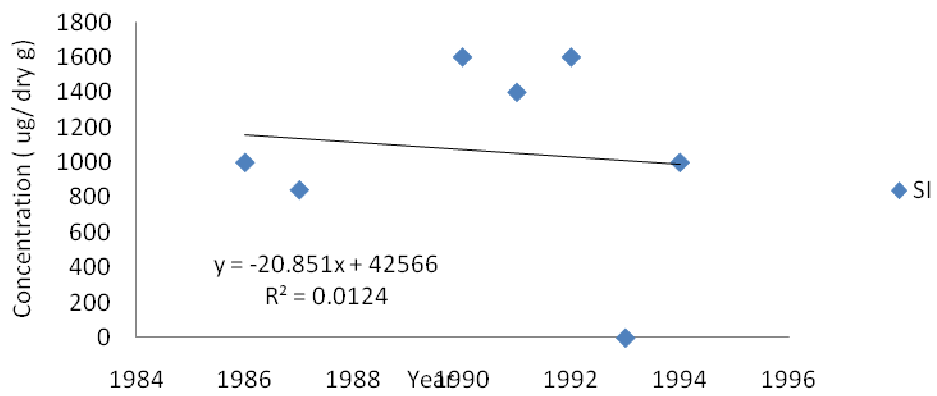
Trend of Sb concentration at Point Santa Barbara Point
Santa Barbara



Trend of Se concnetration at Point Santa Barbara Point
Santa Barbara



Trend of Si concnetration at Point Santa Barbara Point
Santa Barbara



Trend of Sn concentration at Point Santa Barbara Point
Santa Barbara

