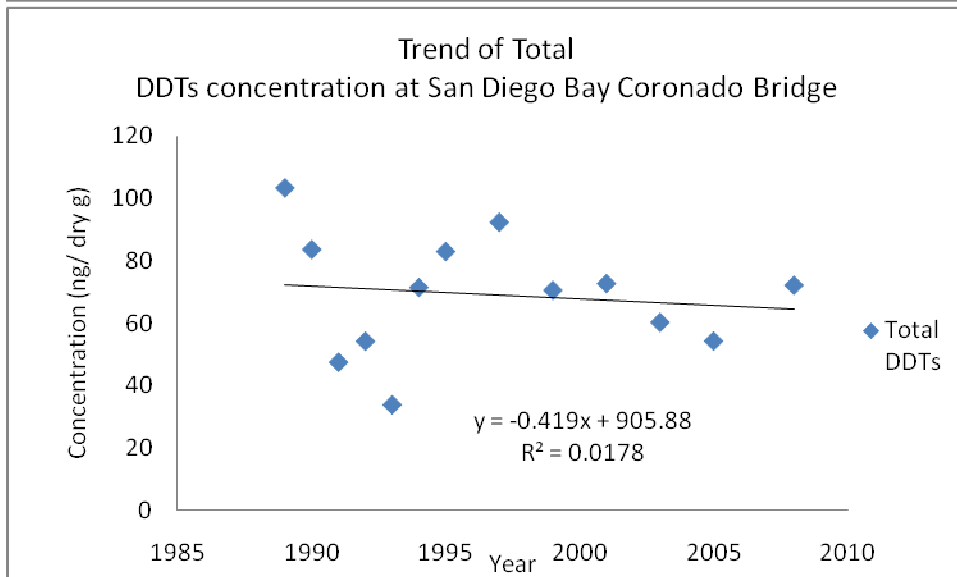
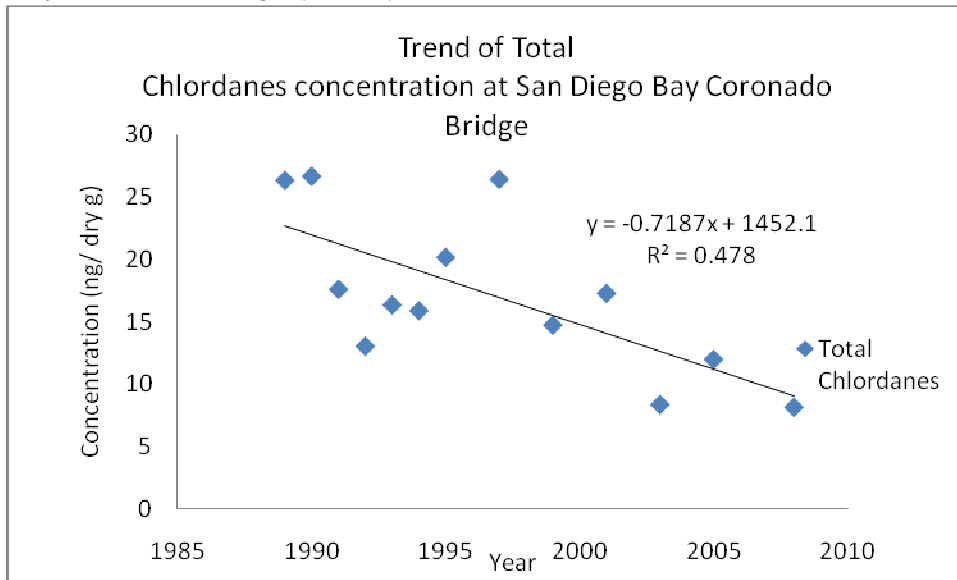
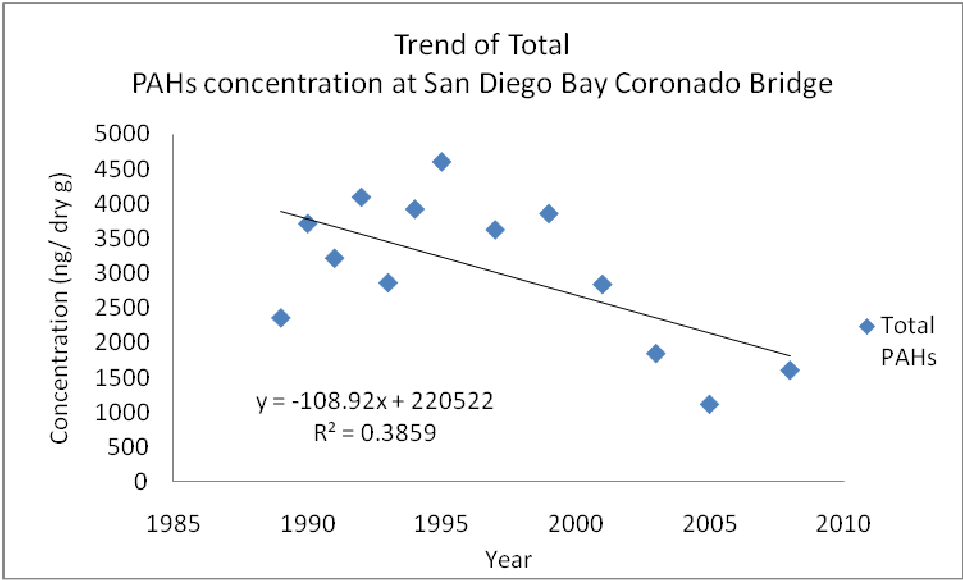
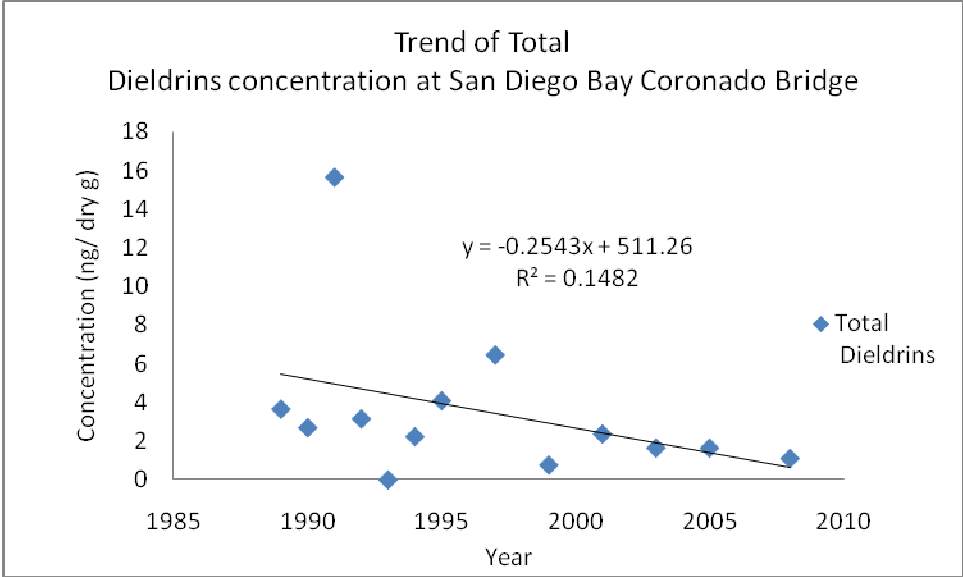


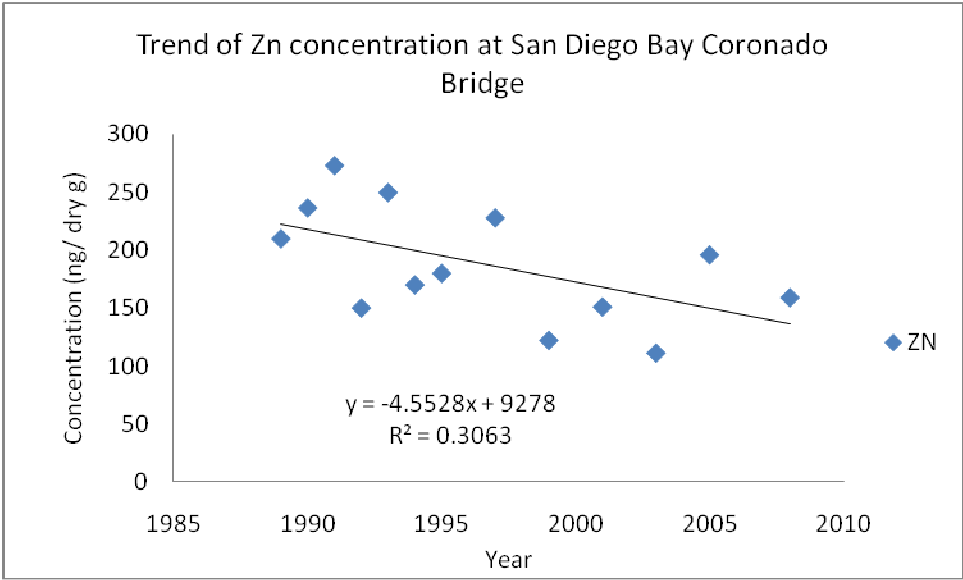
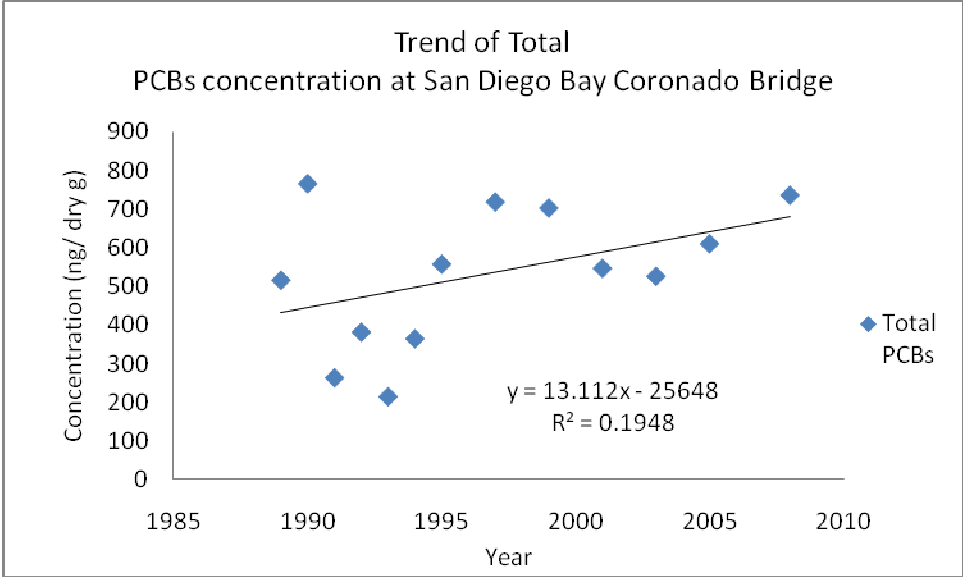
## Summary for San Diego Bay Coronado Bridge (SDCB)

The following graphs show trends at San Diego Bay Coronado Bridge from years 1986-2009 for the following constituents: Chlordane, Total DDT, Dieldrin, Total PAH, PCBs, Zinc (Zn), Silver (Ag), Aluminum (Al), Arsenic (As), Cadmium (Cd), Chromium (Cr), Copper (Cu), Iron (Fe), Mercury (Hg), Manganese (Mn), Nickel (Ni), Lead (Pb), Selenium (Se), Antimony (Sb), Silicon (Si) and Tin (Sn).

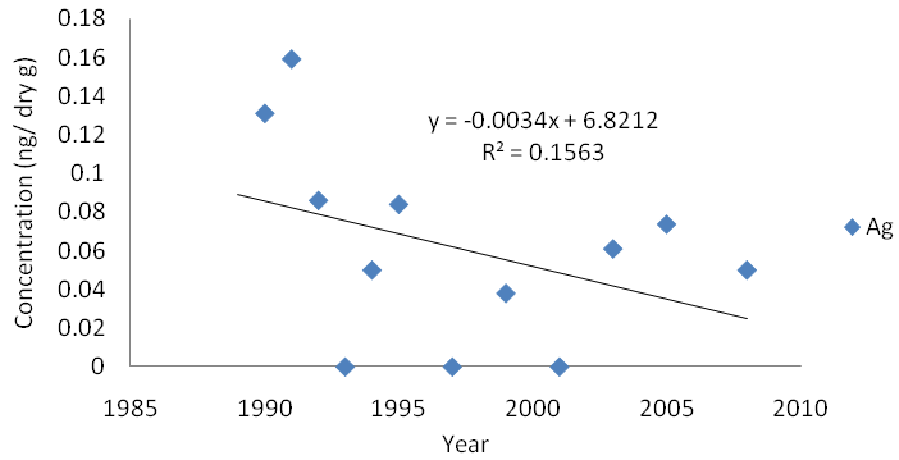
# San Diego Bay Coronado Bridge (SDCB)



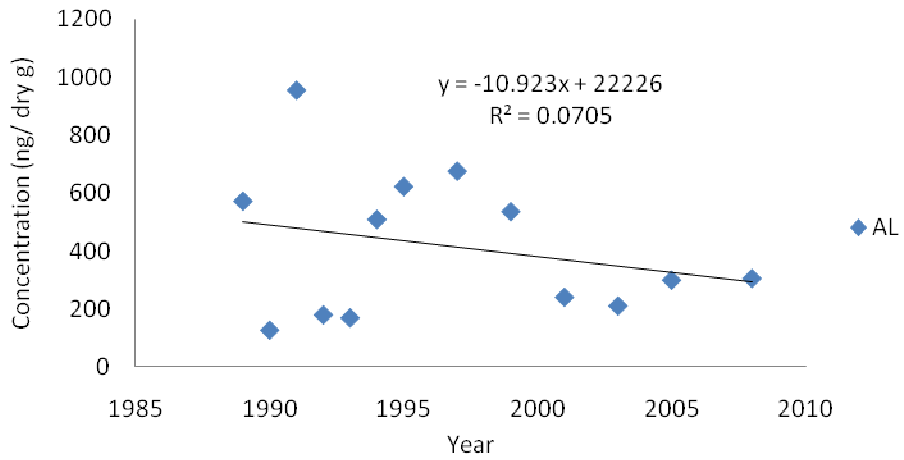




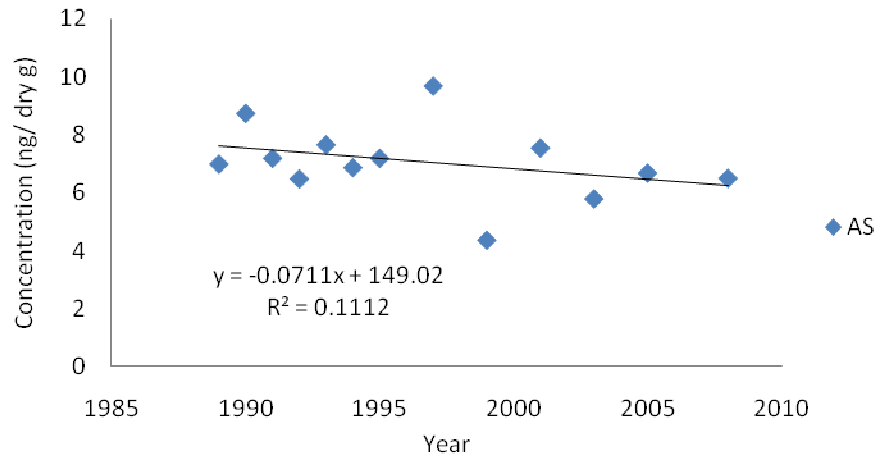
Trend of Ag concentration at San Diego Bay Coronado Bridge



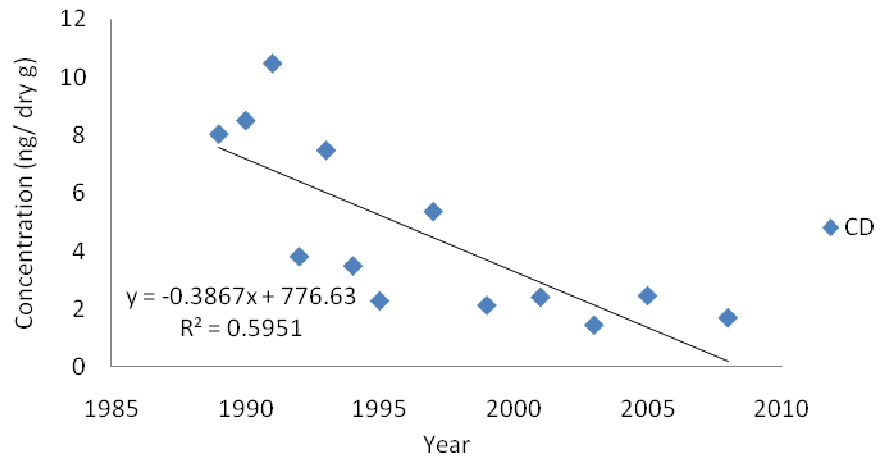
Trend of Al concentration at San Diego Bay Coronado Bridge



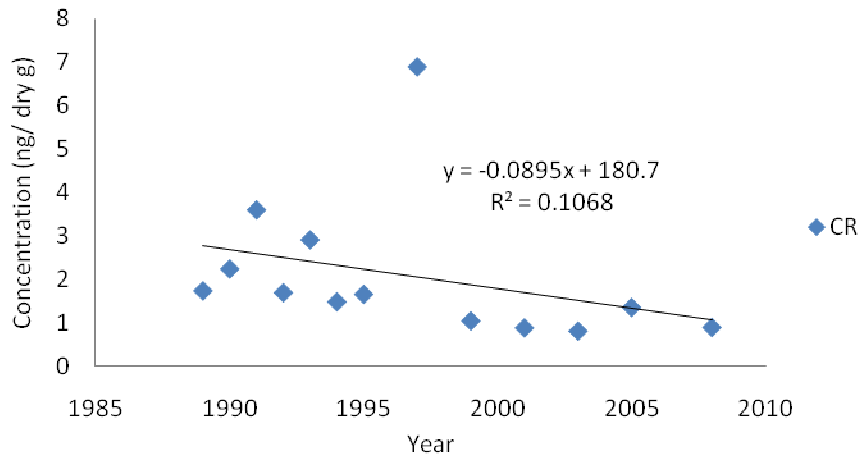
Trend of As concentration at San Diego Bay Coronado Bridge



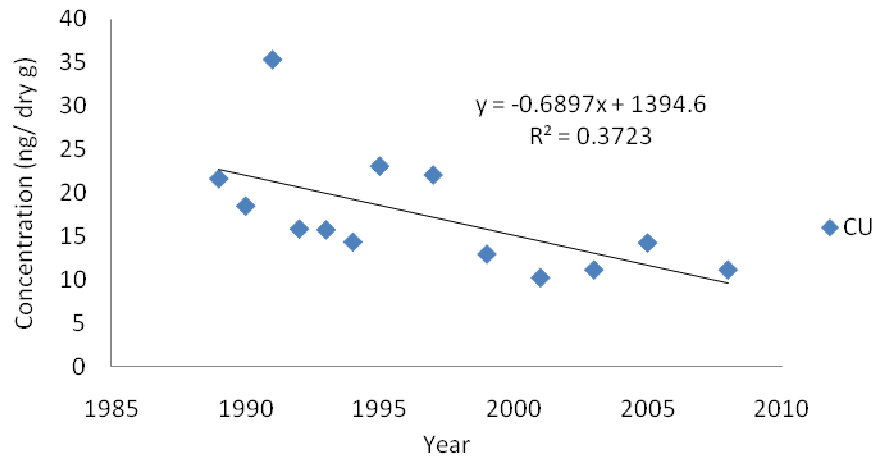
Trend of Cd concentration at San Diego Bay Coronado Bridge



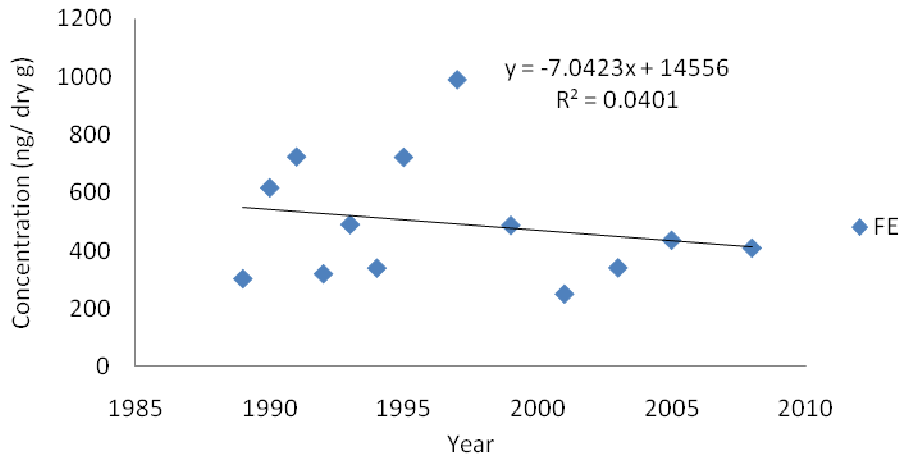
Trend of Cr concentration at San Diego Bay Coronado Bridge



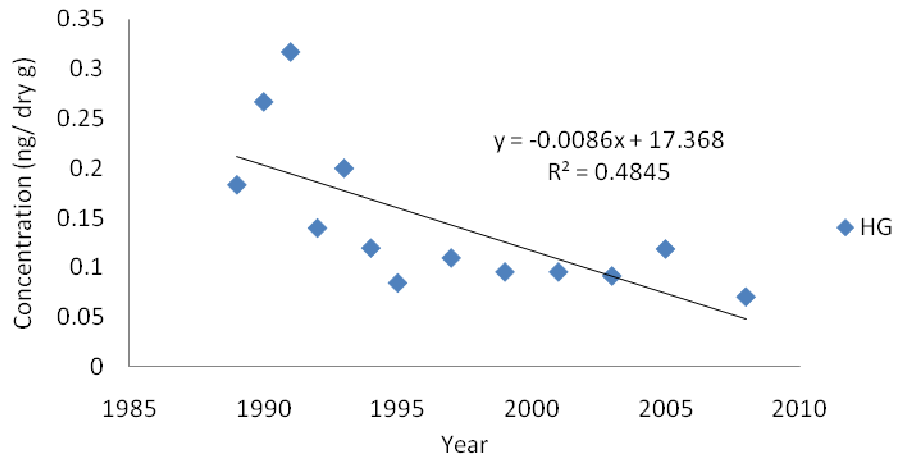
Trend of Cu concentration at San Diego Bay Coronado Bridge



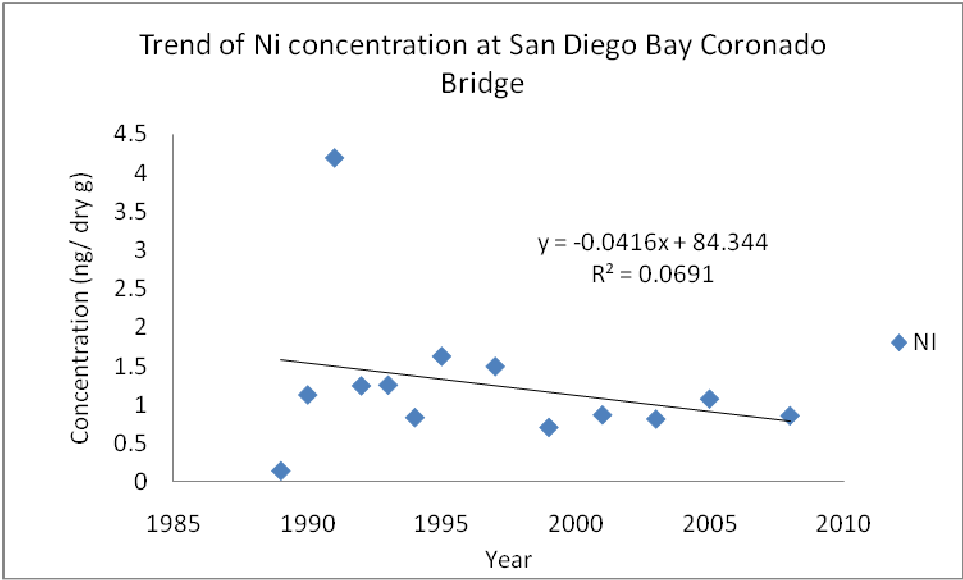
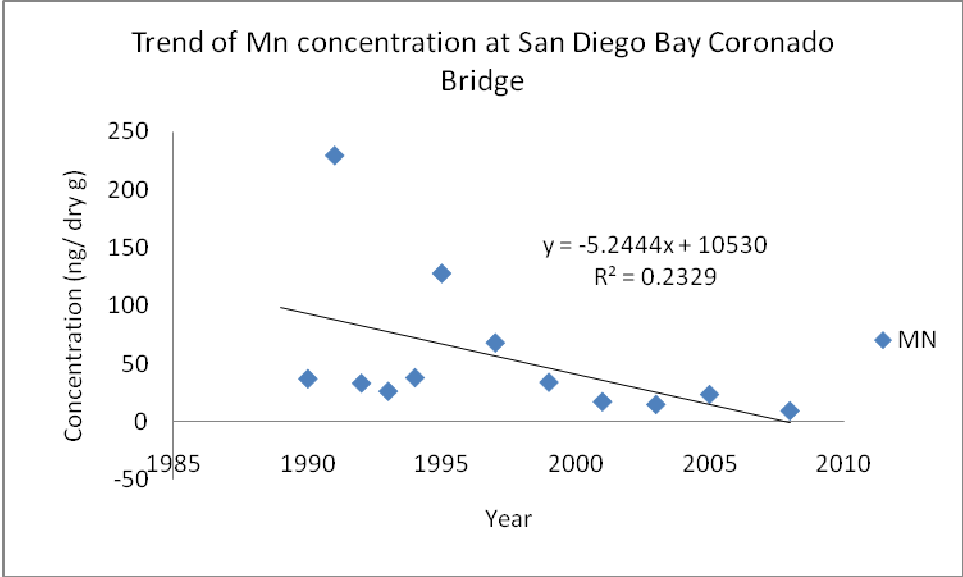
Trend of Fe concentration at San Diego Bay Coronado Bridge

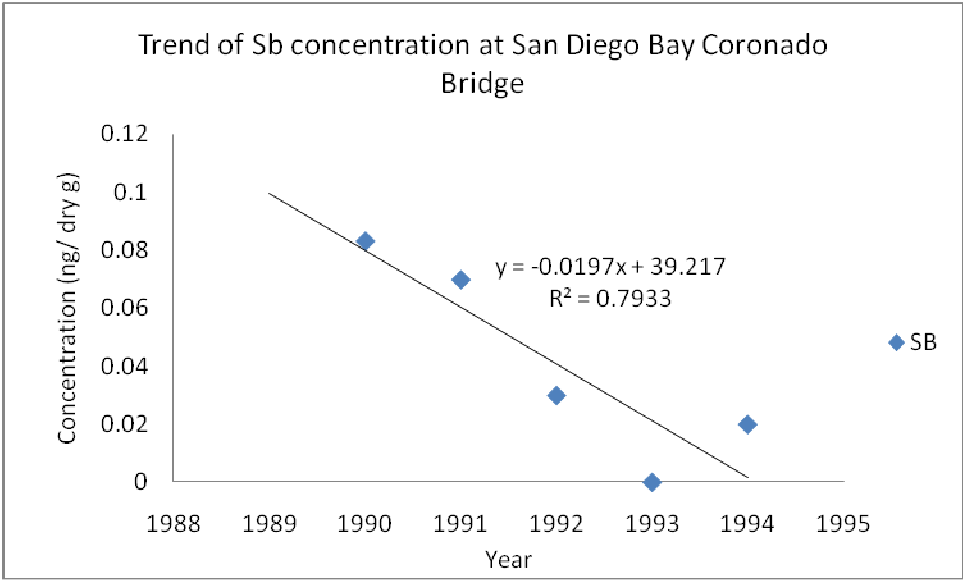
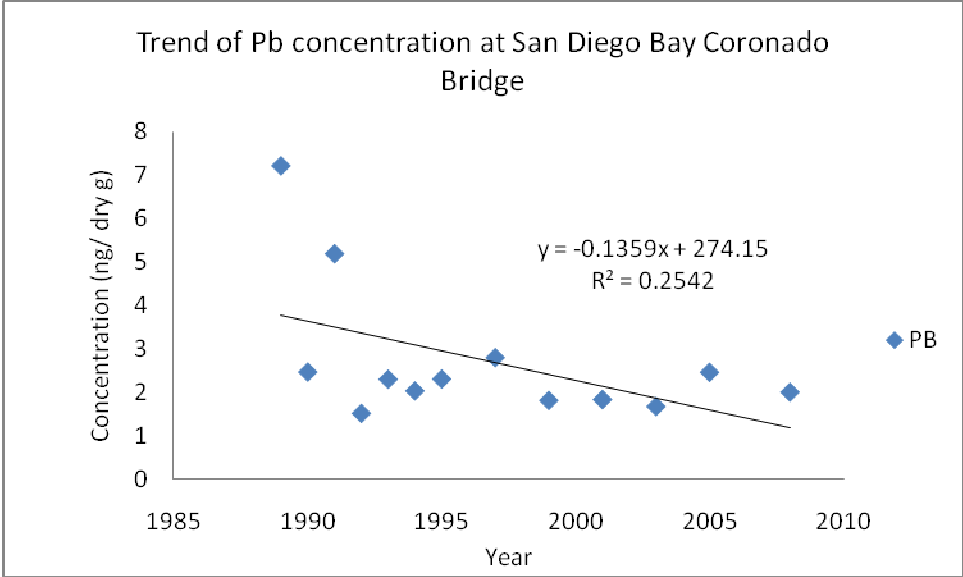


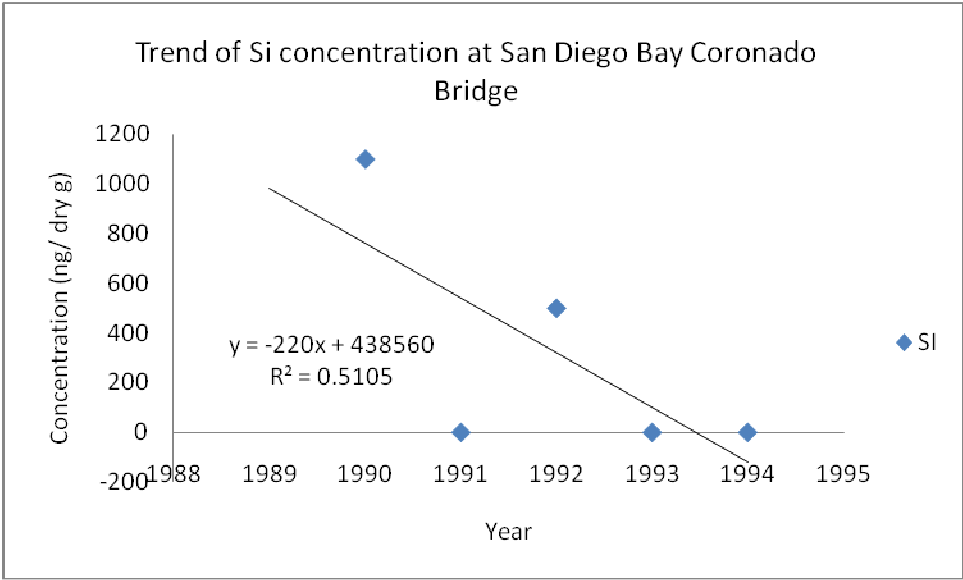
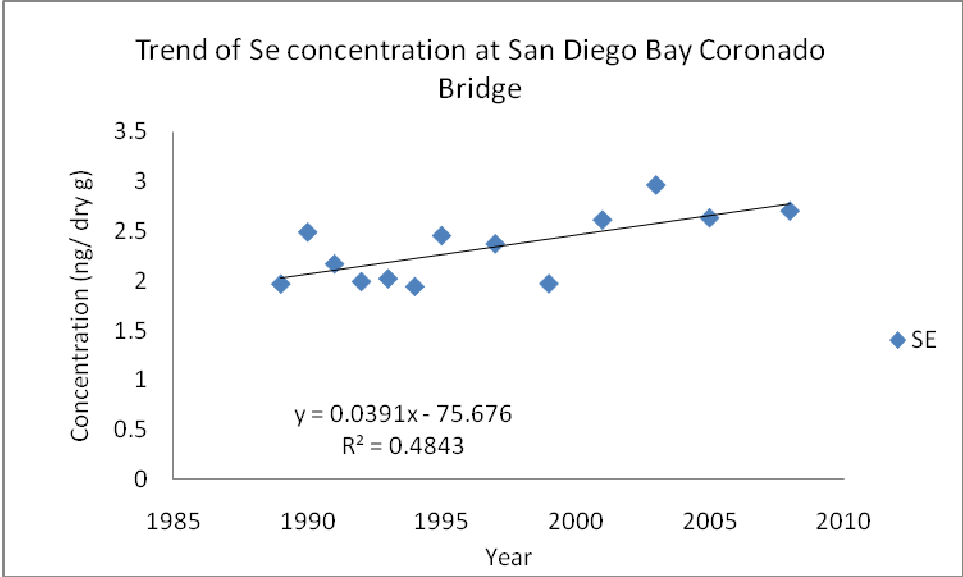
Trend of Hg concentration at San Diego Bay Coronado Bridge











Trend of Sn concentration at San Diego Bay Coronado Bridge

