







**Biological Communities Documented at South Battle Creek Canal/ Soap Creek Feeder**

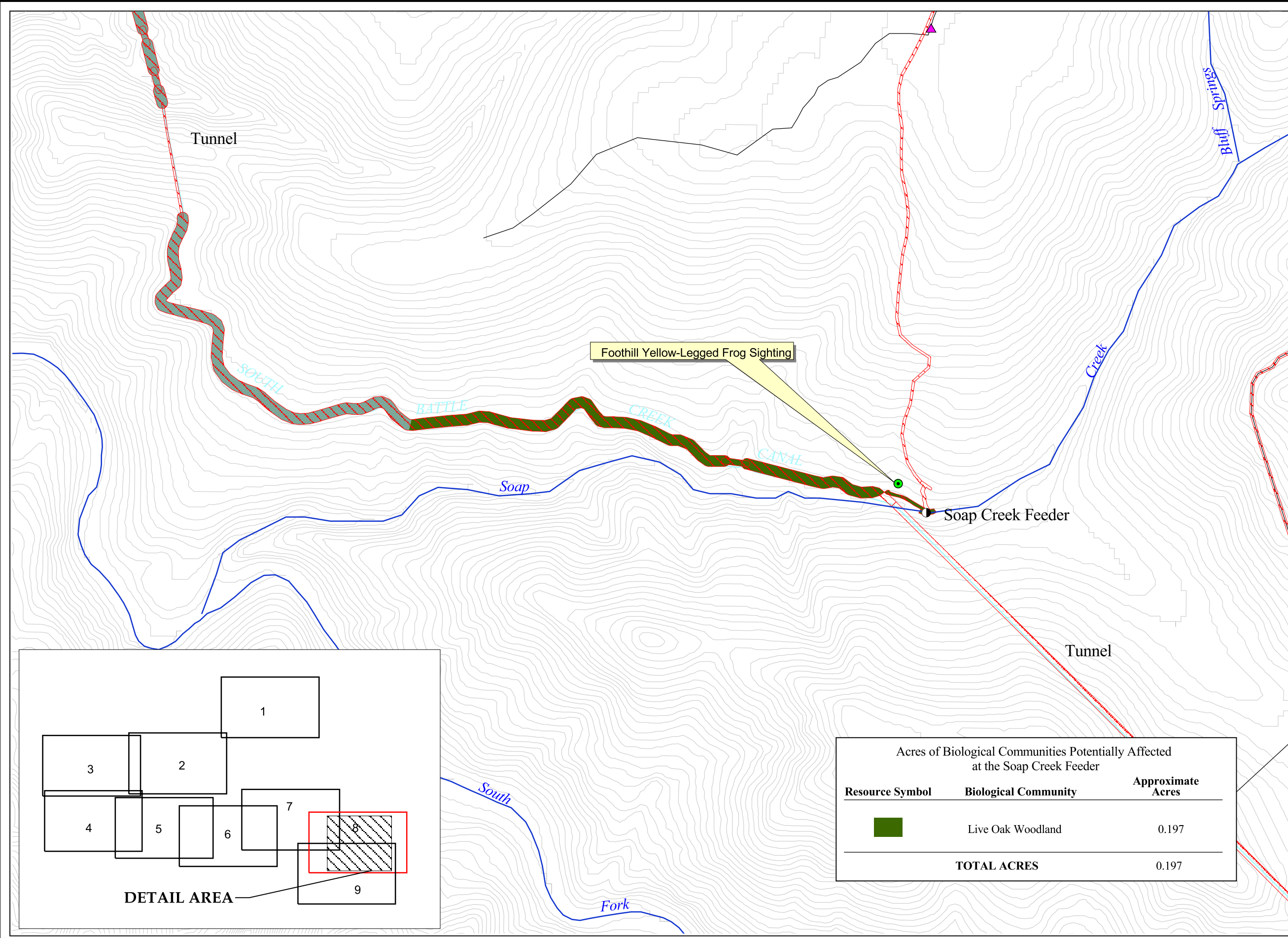
Figure 4.2-16


**LEGEND**

-  Dam
-  Road
-  Proposed Construction Area/Physical Disturbance
-  Canal or Tunnel
-  Contour Interval 5 Meters
-  Foothill Yellow-Legged Frog Sighting

NOTE: Acreage values for South Battle Creek Canal are shown in the table on Figure 4.2-14.

NOTE: Affected area represents the Five Dam Removal Alternative (Proposed Action). Other alternatives may have greater or lesser areas affected by the project.



Acres of Biological Communities Potentially Affected at the Soap Creek Feeder		
Resource Symbol	Biological Community	Approximate Acres
	Live Oak Woodland	0.197
<b>TOTAL ACRES</b>		<b>0.197</b>

