

Appendix M

Waters of the United States Documented at Battle Creek Project Sites

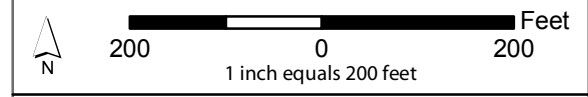
This new appendix presents waters of the United States that were documented at two new sites (Jeffcoat and Willow Springs mitigation sites), as well as waters of the United States information documented at the Asbury Diversion Dam project site. The new information presented in this appendix does not necessarily require recirculation for public comment. However, Reclamation and the State Water Board have deemed that the new information presented in this appendix supports significant new information presented in this Draft SEIS/REIR (see Impact 4.1-8 in Section 4.1, Fish, of this document). As a result, the lead agencies have included this appendix here for public comment. The complete new appendix will be presented in the Final EIS/EIR.



FIGURE M-10
 WATERS OF THE UNITED STATES
 BATTLE CREEK SALMON AND
 STEELHEAD RESTORATION PROJECT
 ASBURY PUMP HOUSE AND DIVERSION DAM

PERENNIAL DRAINAGE
 CONSTRUCTION AREA BOUNDARY

TYPE	AREA (ACRES)
PERENNIAL DRAINAGE	1.28
TOTAL AREA AFFECTED	1.28



SOURCE: USGS DOQQ 1998

Prepared for the U.S. Department of Interior,
 Bureau of Reclamation and the
 State Water Resources Control Board
 by Jones & Stokes
 February 2005

H:\GIS\Projects\battle_creek\03035\03\arcmap\SEIS_maps_11_04\appendix_M_JEW.mxd 02.15.05

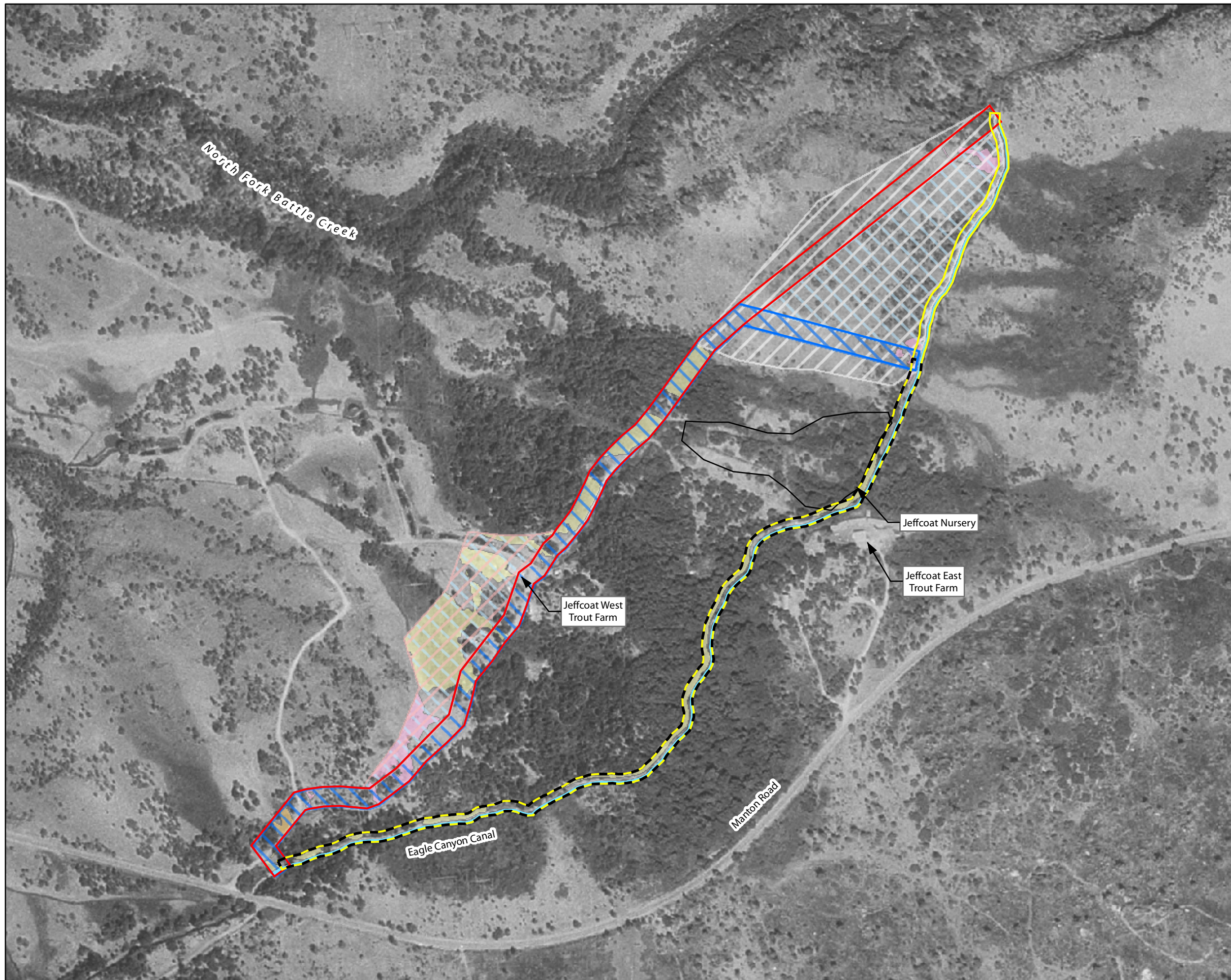
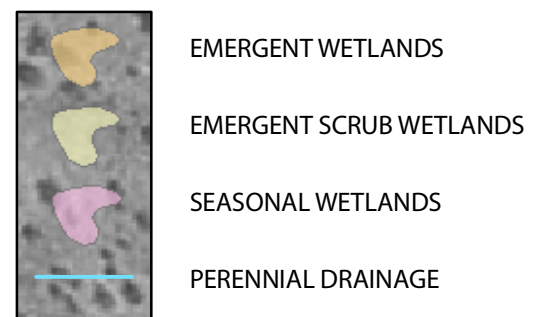
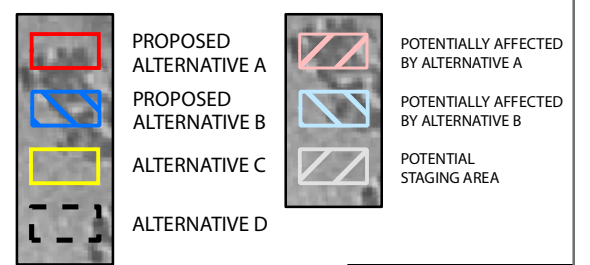


FIGURE M-11
 WATERS OF THE UNITED STATES
 BATTLE CREEK SALMON AND STEELHEAD RESTORATION PROJECT
 JEFFCOAT MITIGATION SITE

WETLANDS AND OTHER WATERS

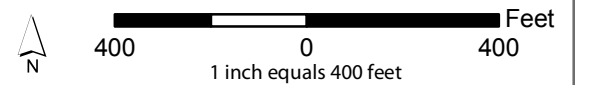


CONSTRUCTION BOUNDARIES



HABITAT TYPE	AREA (ACRES) ¹	
	ALT. A ²	ALT. B ²
EMERGENT WETLANDS	0.13	0.13
EMERGENT SCRUB WETLANDS	1.40	1.40
SEASONAL WETLANDS	0.63	0.63
PERENNIAL DRAINAGE	0.01	0.01
TOTAL AREA AFFECTED	2.17	2.17

HABITAT TYPE	ALT. C	ALT. D
	EMERGENT WETLANDS	0
EMERGENT SCRUB WETLANDS	0.97	0.97
SEASONAL WETLANDS	0.44	0.44
PERENNIAL DRAINAGE	0.67	0.52
TOTAL AREA AFFECTED	2.08	1.93



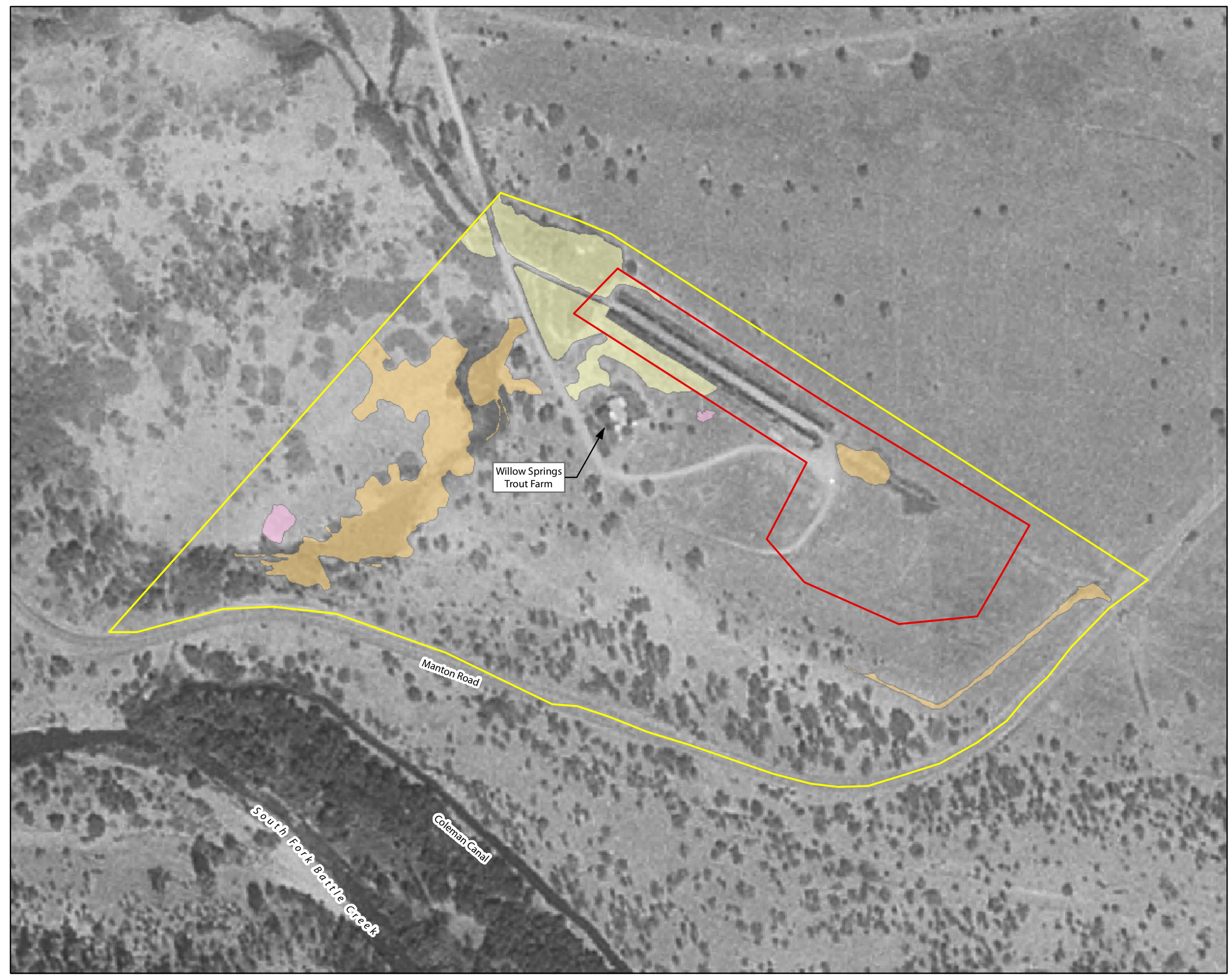
SOURCE: USGS DOQQ 1998






NOTES: ¹ ACREAGE CALCULATIONS FOR EACH ALTERNATIVE INCLUDE THE ENTIRE POTENTIAL STAGING AREA; HOWEVER, THE FINAL STAGING AREA IS EXPECTED TO COVER ONLY 3 ACRES OF THE CROSS-HATCHED AREA

² ACREAGES WERE BASED ON THE PROPOSED ALIGNMENTS FOR ALTERNATIVES A AND B; HOWEVER, THE ACTUAL ALIGNMENT(S) COULD POTENTIALLY OCCUR IN AND AFFECT HABITAT ANYWHERE WITHIN THE CROSS-HATCHED AREA IDENTIFIED AS "POTENTIALLY AFFECTED BY ALTERNATIVE A/B"

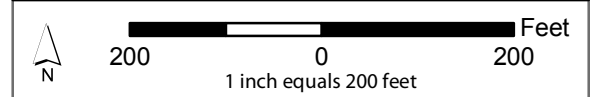
Prepared for the U.S. Department of Interior,
 Bureau of Reclamation and the
 State Water Resources Control Board
 by Jones & Stokes
 February 2005

FIGURE M-12
 WATERS OF THE UNITED STATES
 BATTLE CREEK SALMON AND
 STEELHEAD RESTORATION PROJECT
 WILLOW SPRINGS MITIGATION SITE
 OPTION A—WATER TREATMENT FACILITY



	EMERGENT WETLANDS
	EMERGENT SCRUB WETLANDS
	SEASONAL WETLANDS
	CONSTRUCTION BOUNDARY
	STUDY AREA BOUNDARY

TYPE	AREA (ACRES) ¹
EMERGENT WETLANDS	0.14
EMERGENT SCRUB WETLANDS	0.31
TOTAL AREA AFFECTED	0.45



SOURCE: USGS DOQQ 1998
 NOTES: ¹ AREA AFFECTED WITHIN THE CONSTRUCTION BOUNDARY

Prepared for the U.S. Department of Interior,
 Bureau of Reclamation and the
 State Water Resources Control Board
 by Jones & Stokes
 February 2005